



cideko
BEYOND DIGITAL



AIR KEYBOARD

3D Mouse Plug & Play
Wireless Keyboard
Audio Transmission

Air Keyboard Chatting User Manual

Safety Information

- ✗ 1. Do not use this product near water or moisture.
- ✗ 2. This product is NOT weatherproof.
- 🔌 3. Clean only with a dry lint-free cloth. Disconnect the power source before cleaning. Do not use any chemicals or cleaners.
- ✗ 4. Do not install or use near any open flame or heat sources, such as radiators, heat registers, stoves, grills, or other devices that produce heat.
- ☑ 5. Do not expose to direct sunlight.
- ⚠ 6. Only use accessories specified by the manufacturer.

Important Safety Instructions

1. Read and keep this manual
2. Refer all servicing to qualified service personnel. Servicing is required when the unit has been damaged in any way, such as liquid had been spilled or objects have fallen into the product, the product has been exposed to rain or moisture, does not operate normally, or has been dropped.

Product & Accessory

- | | |
|-------------------------------|---|
| 1. Air Keyboard chatting*1 | 5. Lithium-ion battery *1 |
| 2. Dongle receiver *1 | 6. Mini USB cable |
| 3. User Manual *1 | 7. CD software for customizable definition function |
| 4. Microphone and earphone *1 | |

Feature

- Microphone and earphone supported
- Key number: 83 keys
- Power saving function
- Battery: Rechargeable Lithium-ion battery
- LED indicator
- Motion sensing mouse
- Left and right mouse clicks
- Self customizable definition key

Specification

Frequency range 2400 ~ 2483 MHz

Operating Voltage: 3.1V ~ 4.2V

Rechargeable Lithium-ion battery

Battery life: Up to 10 hours for constant usage

Effective Range: Within 10 meters

Dimension: 142(L)x88(W)x29(H)mm

Supported OS: Windows 98/ME/2000/XP/Vista/ Windows 7;

Mac: OS x(v10.2 or later version)

*Self customizable buttons are only for Microsoft Windows system and may not work normally in Mac OS or Linux system.

Battery & Charging

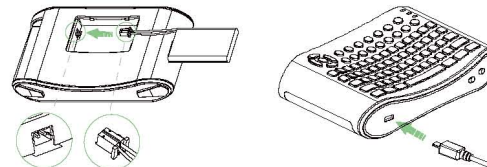
Battery type: Li-Polymer battery

Before using the device for the first time, it is necessary to charge Air Keyboard via mini USB port till green battery indicator light is on.

A. When the battery voltage is low, the red battery indicator will flash.

B. When the battery is extremely low, Air Keyboard will switch off automatically to protect the battery.

C. When you intend not to use the product for a long period of time, remove the battery to avoid damage from leakage and corrosion.



LED Indicator



Connection indicator

Green: Linking

Indicator blinks : Air Keyboard in use.



Battery indicator

Red: Battery in low level

Orange: Battery recharging

Green: Battery fully charged



Microphone mute indicator

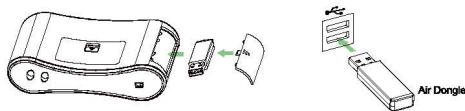
Indicator light off: Microphone on

Red indicator light on: Microphone off

Installation Guide

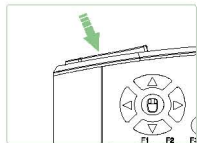
1. Installing Dongle Receiver:

If you are using more than one wireless dongle at a time, the distance between each dongle should be more than 50cm to avoid interference. After connecting the Air Dongle to the USB port of the computer, the system will automatically search for Air Keyboard and establish connection.



2. Switch on

Press the left click button to turn Air Keyboard on



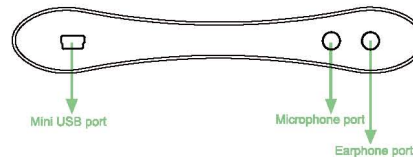
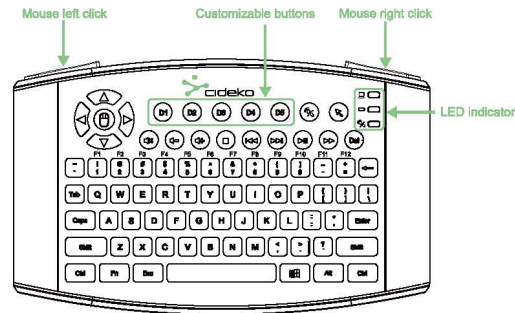
3. Connecting

Air Keyboard will connect automatically with Dongle after switching on. The green link indicator on will blink when moving Air Keyboard in the air.

4. Power saving and power off

Power saving mode will be on after idling for 10 seconds. Click any key or move the mouse to wake it up. Air Keyboard will power off to save power after idling for 4 minutes, click the left mouse click to turn it on again. When audio function is on, the power off function will terminate.

Function of Keyboard Buttons



	Windows
	Middle mouse
	Mute
	Volume down
	Volume up
	Stop
	Previous
	Play/Pause
	Fast forward
	Next

	Up
	Left
	Right
	Down
	Delete
	Function
	Connection indicator
	Battery indicator
	Microphone indicator
	Disable/enable mouse function

Note: Some function keys are limited under Mac OS X/ Linux

User definable buttons (Applies to Windows OS)

Get quick access to the media, programs, and files that you use most often with customizable buttons. Please insert the driver CD and follow steps on screen.

Select the device name which you bought from the pull down menu.

Block: 1

Buttons: Select the button which you want to define.

Block2:

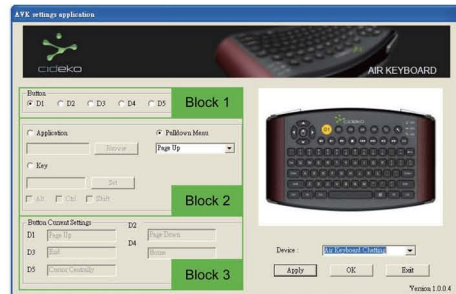
The access buttons could be customized with one of the 3 different methods.

- ① Application: Click the ^browse button; find the file or software you want to access with definable button.
- ② Pull down menu: Select the program or command from the pull down menu.
- ③ Key: Specify the combinations of keys to be executed with a definable button.

Block 3:

Show you the current setting of every single customized button .

Note: Driver for customizable buttons can be downloaded from www.cideko.com



Note:

Press Apply to confirm the setting.

Press OK to finish the setting.

Press Exit to quit the function of quick access.

Troubleshooting:

When Air Keyboard does not work properly even with sufficient power, make sure Air Keyboard is turned on and try these steps:

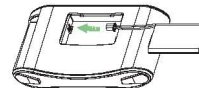
- (a) Remove Air Dongle. Then, reconnect Air Dongle and try again.
- (b) Try a different port or environment:

Try to connect the Air Dongle to a different USB port. Then, check the operation of Air Keyboard. By trying Air Dongle in a different port, you can eliminate any issues caused by the port.

- (c) Test the device on different computers:


If the issue continues to occur, test the keyboard on different computers in a different environment.

- (d) Remove battery and replace battery.

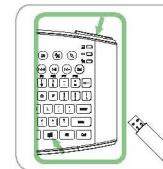


Pairing

The pairing between Air Dongle and Air Keyboard was completed before shipment. When pairing was lost, perform the following pairing steps again:

- (1) Connect Air Dongle to the computer. Bring Air Keyboard next to Air Dongle within 30cm.
- (2) Press the "Windows"  and "mouse right click" buttons at the same time for 2 seconds. Air Dongle will search for Air Keyboard and the LED on Air Dongle will be blinking.
- (3) When the green link indicator on Air Keyboard stays on for 2 seconds, the pairing is completed.

If Air Keyboard does not work correctly after the above steps are performed 3 times, please consult your dealer.



Warranty Information:

Air Keyboard comes with 2 year limited warranty. Please contact your dealer for details in case of warranty claims. The warranty will void in the case that the defect has been caused by misuse, neglect, improper installation, repair, alteration or accident. Cideko bears no responsibility for failure or defect caused by any third party product or components whether authorized or not.





www.cideko.com

FCC statement in User's Manual (for class B)

"Federal Communications Commission (FCC) Statement

This Equipment has been tested and found to comply with the limits for a class B digital device, pursuant to Part 15 of the FCC rules. These limits are designed to provide reasonable protection against harmful interference in a residential installation. This equipment generates, uses and can radiate radio frequency energy and, if not installed and used in accordance with the instructions, may cause harmful interference to radio communications. However, there is no guarantee that interference will not occur in a particular installation. If this equipment does cause harmful interference to radio or television reception, which can be determined by turning the equipment off and on, the user is encouraged to try to correct the interference by one or more of the following measures:

- Reorient or relocate the receiving antenna.
- Increase the separation between the equipment and receiver.
- Connect the equipment into an outlet on a circuit different from that to which the receiver is connected.
- Consult the dealer or an experienced radio/TV technician for help.

FCC Caution:

1. The device complies with Part 15 of the FCC rules. Operation is subject to the following two conditions:
 - (1) This device may not cause harmful interference, and
 - (2) this device must accept any interference received, including interference that may cause undesired operation.
2. This device and its antenna(s) must not be co-located or operating in conjunction with any other antenna or transmitter.
3. Changes or modifications to this unit not expressly approved by the party responsible for compliance could void the user authority to operate the equipment.