



### Safety Information

- ⊗ 1. Do not use this product near water or moisture.
- ⊗ 2. This product is NOT weatherproof.
- ⊗ 3. Clean only with a dry lint-free cloth. Disconnect the power source before cleaning. Do not use any chemicals or cleaners.
- ⊗ 4. Do not install or use near any open flame or heat sources, such as radiators, heat registers, stoves, grills, or other devices that produce heat.
- ⊗ 5. Do not expose to direct sunlight.
- ⚠ 6. Only use accessories specified by the manufacturer.

### Important Safety Instructions

1. Read and keep this manual.
2. Always consider the environmental issues and follow local regulations when disposing of batteries. If the product will not be used for a long period of time, please remove batteries.
3. Refer all servicing to qualified service personnel.
4. When service is required, refer servicing to qualified service personnel under the following conditions :
  - (1) When USB cable is damaged.
  - (2) If liquid has been spilled, or objects have fallen into the device.
  - (3) If the device has been exposed to rain or water.
  - (4) If the device does not operate normally by following the operating instructions. Adjust only by following the operating instructions as improper adjustments of other controls may result in damages.

1.

### Product & Accessory

1. Racer \*1
2. Manual \*1
3. Mini USB Cable \*1
4. AA battery \* 4

**CAUTION**  
RISK OF EXPLOSION IF BATTERY IS REPLACED BY AN INCORRECT TYPE. DISPOSE OF USED BATTERIES ACCORDING TO THE INSTRUCTIONS

### Features

- Ergonomic design for ultra comfort and control
- Retractable clips for Tablets with all dimensions (7"-10.1")
- Dual bluetooth speakers
- Supplying power to speakers through USB adaptor of Tablets

### Specification

Bluetooth: V2.0CLASS\_2  
Frequency Range: Bluetooth RF 2.4GHz~ 2.4835GHz  
Power supply: AA battery \* 4 (DC 6.0V) or mini USB cable connecting to USB adaptors (DC 5.0V/1A~2A) of Tablets

AA battery \* 4

mini USB cable

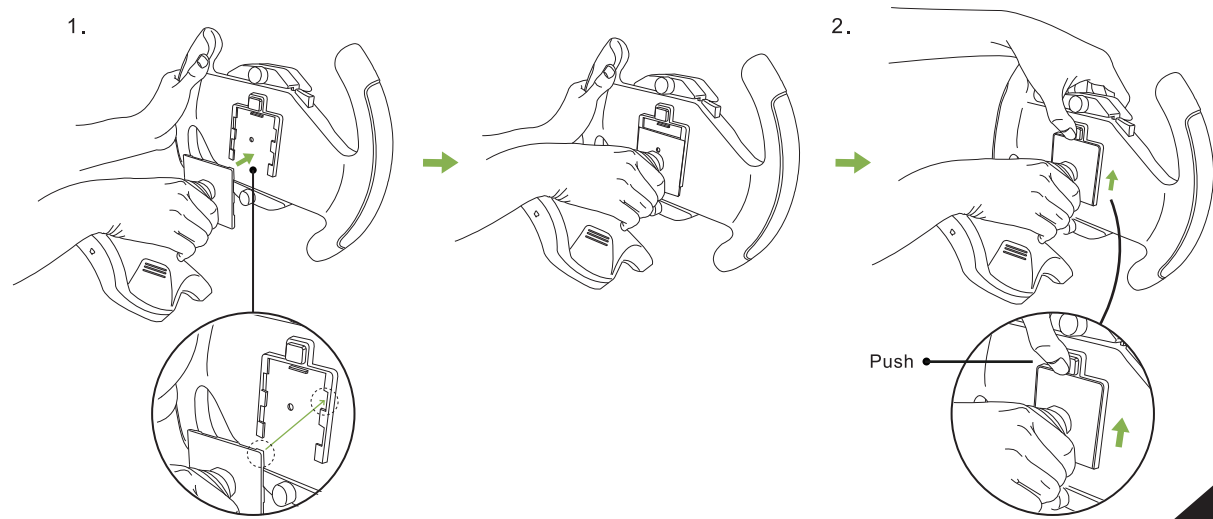
Speakers: 3W/4Ω \* 2 stereo output  
Bluetooth Effective Range: 10 meters in open space  
AA batteries operation time: 6 hours for constant usage

2.

### Installation Guide

#### 1. Assemble Racer wheel to base

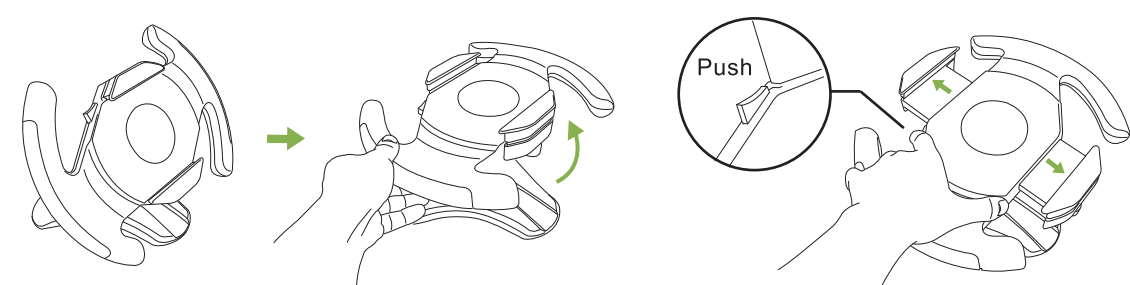
1. Align the gear to assemble Racer wheel onto Base.
2. Press the button in the back to assemble Racer wheel and Base.
3. Release the button to complete assembly.



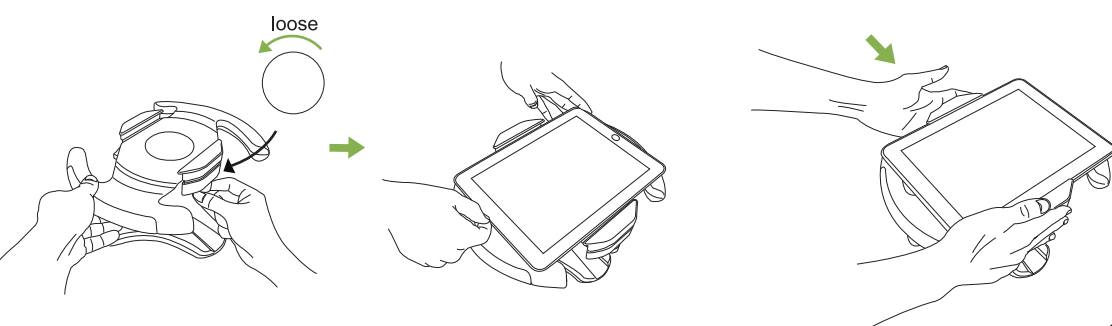
3.

#### 2. Attach Tablet to Racer wheel

1. Adjust the Racer Wheel horizontally.
2. Push the button to extend the clips to maximum.

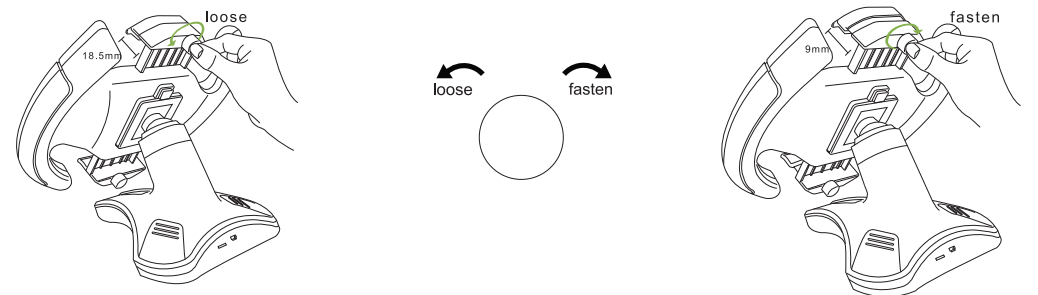


3. Loosen the knob according to different thickness of Tablet.
4. Press the clips by hands to accommodate Tablet with different dimensions (7"~10.1")



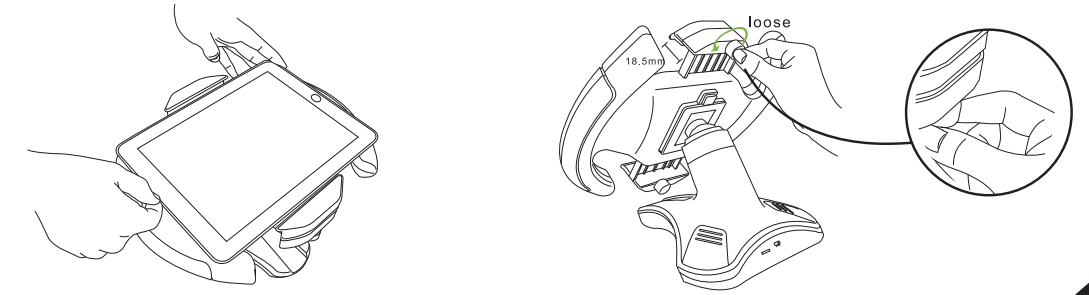
4.

5. Adjust clip height by fastening the knob to accommodate Tablet with different thickness. (9mm ~18.5mm)



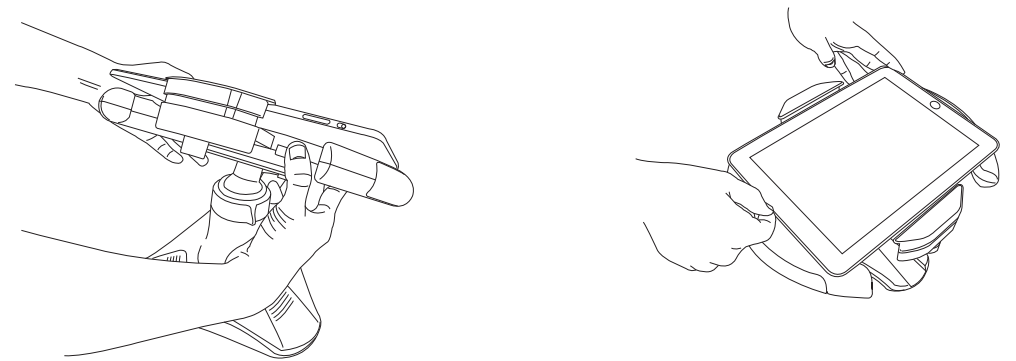
#### 3. Remove Tablet from Racer Wheel

1. Adjust the loaded Racer Wheel horizontally. 2. Loose the knob to adjust clip height to maximum.



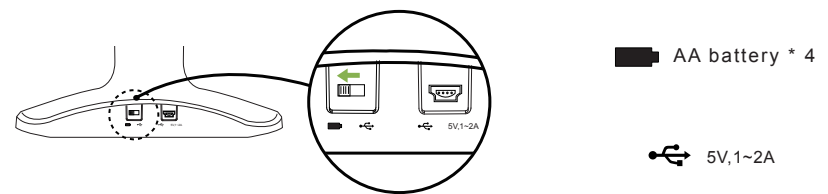
5.

3. Push the button to extend the clips to maximum. 4. Take out the Tablet.



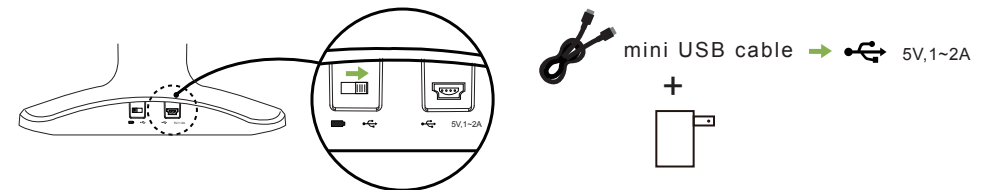
#### 4. Connect Tablet to Bluetooth speakers

1. Place 4 pcs of standard AA batteries to the battery compartment.
2. Switch to AA battery mode (DC 6.0V).

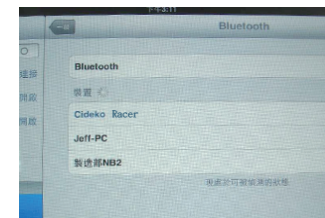


6.

The power of speakers can be supplied by standard Tablet USB adaptor (DC 5.0V/1A ~2A). Switch the Product to USB mode while supplying power through USB adaptors.



3. Turn on the Product by pressing **U** button. When the power indicator shows solid GREEN light, the Product has been turned on successfully.
4. Go to Bluetooth setting in Tablet. Select "Cideko Racer" and input Pin code "0000" to connect Tablet with Bluetooth speakers. When Bluetooth speakers are connected to Tablet successfully, the blue light will stop flashing and go out. The stereo sound will be played through speakers.



7.

5. After connecting to Bluetooth successfully, if there is no audio out for more than 1 minute, the Bluetooth goes into stand by mode and the blue light will start flashing in a slow motion (3 times in 5 seconds). When the stereo sound is activated, the blue light will go out.

#### 5. Adjusting volume of sound

1. Press the control keys (V+ / V-) to adjust the volume of sound.
2. When voltage is lower than 4.0 V, the power indicator (GREEN) will start flashing. When the voltage is lower than 3.2 V, the product will shut down automatically.
3. Please adjust Tablet PC to appropriate volume for ultimate performance.

#### 6. Power off

1. Press the **U** button for more than 2 seconds anytime during usage to force shut down the Product.

#### LED Indicators

- 1) Bluetooth connecting: Blue LED flashes 3 times in 2 seconds while searching the device to link.
  - 2) Power Key
- Sufficient power: Solid Green LED on.  
Low battery: Green LED flashes slowly.

8.

#### Troubleshooting:

If Racer does not work properly, please force shut down the Product by switching power supply to USB mode and rebooting the Product again. If Racer does not work properly after the above steps have been performed 3 times, please consult your dealer.



#### Warranty Information:

Racer comes with 2 year limited warranty. Please contact your dealer for details in case of warranty claims. The warranty will void in the case that the defect has been caused by misuse, neglect, improper installation, repair, alteration or accident. Cideko bears no responsibility for failure or defect caused by any third party product or components whether authorized or not.

This device complies with part 15 of the FCC rules. Operation is subject to the following two conditions:

1. This device may not cause harmful interference, and
2. This device must accept any interference received, including interference that may cause undesired operation.

9.