

Prüfbericht-Nr.: Test Report No.:	17033717 005	Auftrags-Nr.: Order No.:	164005874	Seite 1 von 22 Page 1 of 22
Kunden-Referenz-Nr.: Client Reference No.:	N/A	Auftragsdatum: Order date:	24.06.2013	
Auftraggeber: Client:	KEEN HIGH TECHNOLOGIES LTD., Block A1 & A2, Ze Da Li Industrial Park, Tangwei Area, Fuyong, Bao'an, Shenzhen, Guangdong, China			
Prüfgegenstand: Test item:	Tablet			
Bezeichnung / Typ-Nr.: Identification / Type No.:	NS-14T002			
Auftrags-Inhalt: Order content:	FCC/IC Certification			
Prüfgrundlage: Test specification:	CFR Title 47 Part 2 Subpart J Section 2.1093	ANSI/IEEE C95.1-1992		
	IEEE 1528-2003	FCC OET Bulletin 65 Supplement C (Edition 01-01)		
Wareneingangsdatum: Date of receipt:	24.06.2013			
Prüfmuster-Nr.: Test sample No.:	N/A			
Prüfzeitraum: Testing period:	09.07.2013			
Ort der Prüfung: Place of testing:	Audix Technology (Shenzhen) Co., Ltd.			
Prüflaboratorium: Testing laboratory:	TÜV Rheinland (Shenzhen) Co., Ltd.			
Prüfergebnis*: Test result*:	Pass			
geprüft von / tested by:		kontrolliert von / reviewed by:		
29.08.2013	Owen Tian/Project Manager	29.08.2013	Sam Lin/Technical Certifier	
Datum Date	Name / Stellung Name / Position	Unterschrift Signature	Datum Date	Name / Stellung Name / Position
				Unterschrift Signature
Sonstiges / Other:				
Zustand des Prüfgegenstandes bei Anlieferung: Condition of the test item at delivery:		Prüfmuster vollständig und unbeschädigt Test item complete and undamaged		
* Legende:	1 = sehr gut	2 = gut	3 = befriedigend	4 = ausreichend
	P(ass) = entspricht o.g. Prüfgrundlage(n)	F(ail) = entspricht nicht o.g. Prüfgrundlage(n)	N/A = nicht anwendbar	5 = mangelhaft
Legend:	1 = very good	2 = good	3 = satisfactory	4 = sufficient
	P(ass) = passed a.m. test specification(s)	F(ail) = failed a.m. test specification(s)	N/A = not applicable	5 = poor
			N/A = not tested	
Dieser Prüfbericht bezieht sich nur auf das o.g. Prüfmuster und darf ohne Genehmigung der Prüfstelle nicht auszugsweise vervielfältigt werden. Dieser Bericht berechtigt nicht zur Verwendung eines Prüfzeichens.				
This test report only relates to the a. m. test sample. Without permission of the test center this test report is not permitted to be duplicated in extracts. This test report does not entitle to carry any test mark.				

STATEMENT OF COMPLIANCE

TEST ITEM	SPECIFICATION	RESULT
Specific Absorption Rate - Wi-Fi 802.11 b/g/n - 2.4GHz Band	OET Bulletin 65 Supplement C (Edition 01-01): <i>Evaluating compliance with FCC Guidelines for Human Exposure to Radiofrequency Electromagnetic Fields</i>	PASS

This device complies with Specific Absorption Rate (SAR) for general population/uncontrolled exposure limits (1.6W/kg) specified in CFR Title 47 Part 2 Subpart J Section 2.1093 and ANSI/IEEE C95.1-1992.

This device have been testd in accordance with the measurement methods and procedure specified in IEEE 1528-2003 and FCC OET Bulletin 65 Supplement C (edition 01-01).

Refer to the maximum results of Specific Absorption Rate (SAR) durning testing as below.

FREQUENCY BAND	EXPOSURE POSITION	EQUIPMENT CLASS	HIGHEST REPORTED SAR VALUE (W/KG)
802.11 b/g/n - 2.4GHz Band	Body	DTS	0.060

Contents

1.	GENERAL REMARKS	4
1.1	COMPLEMENTARY MATERIALS	4
2.	TEST SITES	4
2.1	TEST FACILITIES.....	4
2.2	LIST OF TEST AND MEASUREMENT INSTRUMENTS.....	5
3.	GENERAL PRODUCT INFORMATION	6
3.1	PRODUCT FUNCTION AND INTENDED USE.....	6
3.2	RATINGS AND SYSTEM DETAILS	6
3.3	INDEPENDENT OPERATION MODES	9
3.4	SUBMITTED DOCUMENTS.....	9
4.	TEST SET-UP AND OPERATION MODES	10
4.1	PRINCIPLE OF CONFIGURATION SELECTION.....	10
4.2	TISSUE SIMULATING LIQUID INGREDIENTS	11
4.3	SPECIFIC ABSORPTION RATE (SAR) SYSTEM CHECK.....	11
4.4	EXPOSURE POSITIONS CONSIDERATION.....	12
4.5	PHANTOM DESCRIPTION.....	13
4.6	SCANNING PROCEDURE	13
4.7	SPATIAL PEAK SAR EVALUATION	14
4.8	TEST OPERATION AND TEST SOFTWARE	14
4.9	SPECIAL ACCESSORIES AND AUXILIARY EQUIPMENT	15
5.	TEST RESULTS	16
5.1	HUAMAN EXPOSURE TO RADIOFREQUENCY ELECTROMAGNETIC FIELDS.....	16
5.2	MEASUREMENT UNCERTAINTY.....	19
5.2.1	<i>Measurement uncertainty evaluation</i>	<i>19</i>
6.	PHOTOGRAPHS OF THE TEST SET-UP	21
7.	LIST OF TABLES	22
8.	LIST OF PHOTOGRAPHS	22

1. General Remarks

1.1 Complementary Materials

All attachments are integral parts of this test report. This applies especially to the following appendix:

- Appendix A: System Performance Check
- Appendix B: Test Plots of SAR Measurement
- Appendix C: Calibration Certificate

2. Test Sites

2.1 Test Facilities

Audix Technology (Shenzhen) Co., Ltd.

No. 6, Ke Feng Road, Block 52, Shenzhen Science & Industry Park Nantou,
Shenzhen, Guangdong, P.R. China

The tests at the test site have been conducted under the supervision of a TÜV engineer.

2.2 List of Test and Measurement Instruments

Table 1: List of Test and Measurement Equipment

Kind of Equipment	Manufacturer	Type	S/N	Calibrated until
SAR Test System	Speag	DASY5 TX60L SAR	N/A	June.4,2015
Wireless Communication Test Set	Agilent	E5515C	GB44300243	May.08, 2014
Power Meter	Anritsu	ML2487A	6K00002472	May.08, 2014
Power Sensor	Anritsu	MA2491A	032516	May.08, 2014
Signal Generator	Marconi	2031B	119606/058	May.08, 2014
Amplifier	Milmega	AS0206-50	1036253	NCR
Dipole Antenna	Speag	D2450V2	862	June.22, 2013
Dipole Antenna	Speag	D5GHzV2	1102	Mar.14, 2014
Attenuator	Agilent	8491A 3dB	MY39262001	May.08, 14
Attenuator	Agilent	8491A 10dB	MY39264375	May.08, 14
DAE	Speag	DAE4	899	July.25, 2013
E-Field Probe	Speag	EX3DV3	3139	July.25, 2013
E-Field Probe	Speag	EX3DV4	3767	July.27, 2013
Network Analyser	Agilent	E5071B	MY42403549	May.08, 2014

3. General Product Information

3.1 Product Function and Intended Use

The EUT is a 8" tablet with Wi-Fi & Bluetooth function.
 For details refer to the User Manual and Circuit Diagram.

3.2 Ratings and System Details

Table 2: Technical Specification

Device type:	Portable device		
EUT Name:	Tablet		
Type Identification:	NS-14T002		
Serial Number	13D25A000001		
FCC ID:	XUZNS-14T002		
IC number:	10558A-NS14T002		
Operating mode(s) / WiFi:	802.11b	802.11g	802.11n
Test modulation	DSSS	OFDM	OFDM
Transmit Frequency Range (MHz):	2412-2462	2412-2462	2412-2462
Maximum tune-up average output power (dBm):	16	15	14
Operating mode(s) / Bluetooth:	Bluetooth 4.0		
Test modulation	GFSK, $\pi/4$ DQPSK, 8DPSK		
Transmit Frequency Range (MHz):	2402-2480		
Maximum tune-up average output power (dBm):	10		
Hardware version:	V1.0		
Software version:	V3.0.36+		
Antenna type:	Integrated antenna		
Battery options:	DC 3.7V		

Table 3: List of WLAN Channel of 802.11b/g/n mode

802.11b		802.11g		802.11n (HT20)	
Channel Number	Frequency (MHz)	Channel Number	Frequency (MHz)	Channel Number	Frequency (MHz)
1	2412	1	2412	1	2412
2	2417	2	2417	2	2417
3	2422	3	2422	3	2422
4	2427	4	2427	4	2427
5	2432	5	2432	5	2432
6	2437	6	2437	6	2437
7	2442	7	2442	7	2442
8	2447	8	2447	8	2447
9	2452	9	2452	9	2452
10	2457	10	2457	10	2457
11	2462	11	2462	11	2462

Table 4: List of Bluetooth Channel (BDR & EDR mode)

Channel Number	Frequency (MHz)	Channel Number	Frequency (MHz)	Channel Number	Frequency (MHz)	Channel Number	Frequency (MHz)
0	2402.00	20	2442.00	40	2442.00	60	2462.00
1	2403.00	21	2423.00	41	2443.00	61	2463.00
2	2404.00	22	2424.00	42	2444.00	62	2464.00
3	2405.00	23	2425.00	43	2445.00	63	2465.00
4	2406.00	24	2426.00	44	2446.00	64	2466.00
5	2407.00	25	2427.00	45	2447.00	65	2467.00
6	2408.00	26	2428.00	46	2448.00	66	2468.00
7	2409.00	27	2429.00	47	2449.00	67	2469.00
8	2410.00	28	2430.00	48	2450.00	68	2470.00
9	2411.00	29	2431.00	49	2451.00	69	2471.00
10	2412.00	30	2432.00	50	2452.00	70	2472.00
11	2413.00	31	2433.00	51	2453.00	71	2473.00
12	2414.00	32	2434.00	52	2454.00	72	2474.00
13	2415.00	33	2435.00	53	2455.00	73	2475.00
14	2416.00	34	2436.00	54	2456.00	74	2476.00
15	2417.00	35	2437.00	55	2457.00	75	2477.00
16	2418.00	36	2438.00	56	2458.00	76	2478.00
17	2419.00	37	2439.00	57	2459.00	77	2479.00
18	2420.00	38	2440.00	58	2460.00	78	2480.00
19	2421.00	39	2441.00	59	2461.00		

Table 5: List of Bluetooth Channel (LE mode)

Channel Number	Frequency (MHz)	Channel Number	Frequency (MHz)	Channel Number	Frequency (MHz)	Channel Number	Frequency (MHz)
0	2402.00	10	2422.00	20	2442.00	30	2462.00
1	2404.00	11	2424.00	21	2444.00	31	2464.00
2	2406.00	12	2426.00	22	2446.00	32	2466.00
3	2408.00	13	2428.00	23	2448.00	33	2468.00
4	2410.00	14	2430.00	24	2450.00	34	2470.00
5	2412.00	15	2432.00	25	2452.00	35	2472.00
6	2414.00	16	2434.00	26	2454.00	36	2474.00
7	2416.00	17	2436.00	27	2456.00	37	2476.00
8	2418.00	18	2438.00	28	2458.00	38	2478.00
9	2420.00	19	2440.00	29	2460.00	39	2480.00

3.3 Independent Operation Modes

The basic operation modes are:

- A. WiFi transmitting
 - 1. 802.11b
 - i. CH1
 - ii. CH6
 - iii. CH11
 - 2. 802.11g
 - i. CH1
 - ii. CH6
 - iii. CH11
- B. Off

3.4 Submitted Documents

- Bill of Material
- Constructional Drawing
- PCB Layout
- Photo Document
- Circuit Diagram
- Instruction Manual
- Rating Label

4. Test Set-up and Operation Modes

4.1 Principle of Configuration Selection

The EUT is commanded to operate at maximum transmitting power. The EUT shall use its internal transmitter. The antenna, battery and accessories shall be those specified by the manufacturer. The EUT battery must be fully charged and checked periodically during the test to ascertain uniform power output.

Table 6: Configuration of EUT

Operation mode	Frequency Range (MHz)	Modulation	Default Test Channel			Power Control Level
			Low	Middle	High	
802.11b/g/n	2412-2462	DSSS, OFDM	CH1	CH6	CH11	Test software was used to configure the EUT to transmit at maximum output power
Bluetooth (BDR & EDR mode)	2402-2480	FHSS	CH0	CH39	CH78	
Bluetooth (LE mode)	2402-2480	GFSK	CH0	CH19	CH39	

4.2 Tissue Simulating Liquid Ingredients

The liquid is consisted of Water, Salt, Glycol, Sugar, Preventol and Cellulose. The liquid has previously been proven to be suited for worst-case. The following table shows the detail solution.

Table 7: Composition of Tissue Simulating Liquid

Mixture (%)	Frequency 2450 MHz	
	Head	Body
Water	62.7	73.2
Salt	0.5	0.04
Triton X-100	36.8	0.0
DGBE	0.0	26.7
Dielectric Constant	39.8	52.5
Conductivity (S/m)	1.88	1.78

4.3 Specific Absorption Rate (SAR) System Check

Dielectric parameters of the tissue simulating liquid were verified prior to the SAR evaluation using the dielectric probe kit and the network analyzer.

A system check measurement was made following the determination of the dielectric parameters of the tissue simulating liquid, using the dipole validation kit. A power level of 250 mW for 2.4GHz band as supplied to the dipole antenna, which was placed under the flat section of the twin SAM phantom. The system check results (dielectric parameters and SAR values) are given in the following table.

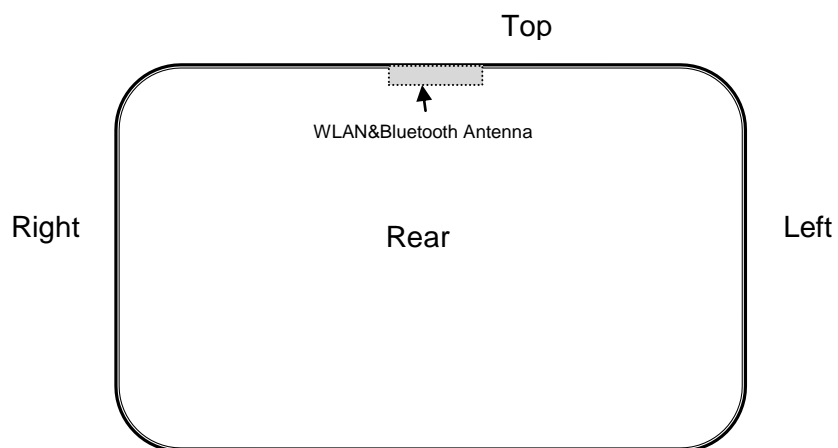
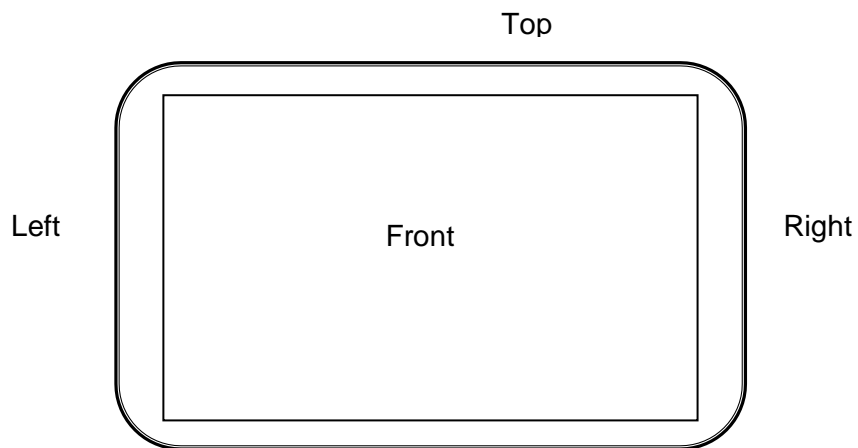
Table 8: System Check Results of Dielectric Performance of Tissue Simulating Liquid

Frequency(MHz)		Target	Measured	Deviation (%)	Limit (%)	Test date	
2450	Body	permittivity	52.7	54.33	3.1	5	2013-7-9
	Conductivity	1.95	1.969	0.97	5		

Table 9: System Check Results of System Verification

System Check	Target SAR Value (1W) (+/-5%)	Measured SAR Value (Normalized to 1W)
	1-g (W/kg)	1-g (W/kg)
2450 MHz / Body	52.0	51.3

4.4 Exposure Positions Consideration



Remark: the diagonal length of EUT is more than 20cm, hence the test was applied on the rear side & top side only.

4.5 Phantom Description

The used SAM Phantom meets the requirements specified in Edition 01-01 of Supplement C to OET Bulletin 65 for Specific Absorption Rate (SAR) measurements.

Phantom for compliance testing of handheld and body-mounted wireless devices in the frequency range of 30 MHz to 6 GHz. ELI is fully compatible with the IEC 62209-2 standard and all known tissue simulating liquids. ELI has been optimized regarding its performance and can be integrated into our standard phantom tables. A cover prevents evaporation of the liquid. Reference markings on the phantom allow installation of the complete setup, including all predefined phantom positions and measurement grids, by teaching three points. The phantom is compatible with all SPEAG dosimetric probes and dipoles.

Material	Vinylester, glass fiber reinforced (VE-GF)
Liquid Compatibility	Compatible with all SPEAG tissue simulating liquids (incl. DGBE type)
Shell Thickness	2.0 ± 0.2 mm (bottom plate)
Dimensions	Major axis: 600 mm, Minor axis: 400 mm
Filling Volume	approx. 30 liters
Wooden Support	SPEAG standard phantom table

The bottom plate contains three pair of bolts for locking the device holder. The device holder positions are adjusted to the standard measurement positions in the three sections. A white cover is provided to tap the phantom during off-periods to prevent water evaporation and changes in the liquid parameters.

On the phantom top, three reference markers are provided to identify the phantom position with respect to the robot.

4.6 Scanning Procedure

The DASY5 installation includes predefined files with recommended procedures for measurements and validation. All test positions (head or body-worn) are tested with the same configuration of test steps differing only in the grid definition for the different test positions.

The “area scan” measures the SAR above the DUT or verification dipole on a parallel plane to the surface. It is used to locate the approximate location of the peak SAR with 2D spline interpolation. The robot performs a stepped movement along one grid axis while the local electrical field strength is measured by the probe. The probe is touching the surface of the SAM during acquisition of measurement values. The standard scan uses large grid spacing for faster measurement. Standard grid spacing for head measurements is 15 mm in x- and y-dimension. If a finer resolution is needed, the grid spacing can be reduced. Grid spacing and orientation have no influence on the SAR result. For special applications where the standard scan method does not find the peak SAR within the grid, e.g. mobile phones with flip cover, the grid can be adapted in orientation.

A “7x7x7 zoom scan” measures the field in a volume around the 2D peak SAR value acquired in the previous “coarse” scan. This is a fine 7x7 grid where the robot additionally moves the probe in 7 steps along the z-axis away from the bottom of the Phantom. Grid spacing for the cube measurement is 5 mm in x and y-direction and 5 mm in z-direction. DASY5 is also able to perform repeated zoom scans if more than 1 peak is found during area scan.

4.7 Spatial Peak SAR Evaluation

The procedure for spatial peak SAR evaluation has been implemented according to the test standard. It can be conducted for 1g and 10g, as well as for user-specific masses. The DASY software includes all numerical procedures necessary to evaluate the spatial peak SAR value.

The base for the evaluation is a "cube" measurement. The measured volume must include the 1g and 10g cubes with the highest averaged SAR values. For that purpose, the center of the measured volume is aligned to the interpolated peak SAR value of a previously performed area scan.

The entire evaluation of the spatial peak values is performed within the post-processing engine. The system always gives the maximum values for the 1g and 10g cubes. The algorithm to find the cube with highest averaged SAR is divided into the following stages:

- Extraction of the measured data (grid and values) from the Zoom Scan
- Calculation of the SAR value at every measurement point based on all stored data (A/D values and measurement parameters)
- Generation of a high-resolution mesh within the measured volume
- Interpolation of all measured values from the measurement grid to the high-resolution grid
- Extrapolation of the entire 3-D field distribution to the phantom surface over the distance from sensor to Surface
- Calculation of the averaged SAR within masses of 1g and 10g

Extrapolation

The extrapolation is based on a least square algorithm. Through the points in the first 3 cm along the z-axis, polynomials of order four are calculated. These polynomials are then used to evaluate the points between the surface and the probe tip. The points, calculated from the surface, have a distance of 1 mm from each other.

Interpolation

The interpolation of the points is done with a 3d-Spline. The 3d-Spline is composed of three one-dimensional splines with the "Not a knot"-condition (x, y and z -direction).

4.8 Test Operation and Test Software

Test operation refers to test setup in chapter 5.

A communication link is set up with the test mode software for WiFi mode test. During the test, at the each test frequency channel, the EUT is operated at the RF continuous emission mode.

802.11 b/g/n operating modes are tested independently according to the service requirements in each frequency band. 802.11b/g/n modes are tested on channel 1, 6, 11. However, if output power reduction is necessary for channels 1 and/or 11 to meet restricted band requirements the highest output channel closest to each of these channels must be tested instead.

SAR is not required for 802.11n when the maximum average output power is less than $\frac{1}{4}$ dB higher than that measured on the corresponding 802.11b channels.

Each channel should be tested at the lowest data rate, and repeated SAR measurement is required only when the measured SAR is ≥ 0.8 W/kg.

For each frequency band testing at higher data rates and higher order modulations is not required when the maximum average output power for each of these configurations is less than $\frac{1}{4}$ dB higher than those measured at the lowest data rate.

4.9 Special Accessories and Auxiliary Equipment

None.

5. Test Results

5.1 Human Exposure to Radiofrequency Electromagnetic Fields

RESULT: **Passed**

Date of testing : 2013-07-09
 Test standard : CFR Title 47 Part 2 Subpart J Section 2.1093
 ANSI/IEEE C95.1-1992
 IEEE 1528-2003
 FCC OET Bulletin 65 Supplement C (Edition 01-01)
 FCC KDB Publication : KDB 447498 D01 v05r01
 KDB 248227 D01 v01r02
 KDB 616217 D04 v01r01
 KDB 865664 D01 v01r01
 Limits : 1.6W/kg

Test setup

Operation mode : A
 Ambient temperature : 24°C
 Relative humidity : 51%
 Atmospheric pressure : 101.0kPa

Table 10: Conducted Power of 802.11b/g/n

802.11 b/g/n	Conducted Power (dBm)					
	CH1 / 2412		CH6 / 2437		CH11 / 2462	
	Rated Average Power (dBm)	Measured Average Power (dBm)	Rated Average Power (dBm)	Measured Average Power (dBm)	Rated Average Power (dBm)	Measured Average Power (dBm)
802.11 b (1Mbps)	16	14.51	16	14.47	16	14.36
802.11 g (6Mbps)	15	15.27	15	15.55	15	15.75
802.11 n (MSCO, 6.5Mbps)	14	13.46	14	13.76	14	14.00

Table 11: Conducted Power of Bluetooth (BDR & EDR mode)

Bluetooth	Conducted Power (dBm)		
	CH0 / 2402	CH39 / 2441	CH78 / 2480
Basic Data Rate	6.92	7.35	7.50
Enhanced Data Rate	7.55	7.94	8.19

Table 12: Conducted Power of Bluetooth (LE mode)

Bluetooth	Conducted Power (dBm)		
	CH0 / 2402	CH39 / 2441	CH78 / 2480
LE	5.58	6.07	6.23

Note:

According to KDB 447498 D01 v05r01, the 1-g and 10-g SAR test exclusion thresholds for 100 MHz to 6 GHz at test separation distances $\leq 50\text{mm}$ are determined by:

$[(\text{max. power of channel, including tune-up tolerance, mW}) / (\text{min. test separation distance, mm})] * [\sqrt{f(\text{GHz})}] \leq 3.0$ for 1-g SAR and ≤ 7.5 for 10-g extremity SAR

The maximum output power of Bluetooth is 8.19dBm (6.59mW), and the minimum separation distance is 5mm, hence the exclusion thresholds is $2.1 < 3.0$, therefore RF exposure evaluation is not required.

Table 13: Test result of SAR Values

Operation Mode	Test Position	Separation Distance (cm)	Channel	Measure Level (1g) W/kg	Scaled SAR Value (W/kg)	Test Plots
802.11b	Rear	0	CH1	0.033	0.047	1
	Top	0	CH1	0.032	0.045	2
	Rear	0	CH6	0.035	0.050	3
	Top	0	CH6	0.035	0.050	4
	Rear	0	CH11	0.040	0.058	5
	Top	0	CH11	0.041	0.060	6
802.11g	Rear	0	CH1	0.029	Note 1 N/A	7
	Top	0	CH1	0.025		8
	Rear	0	CH6	0.015		9
	Top	0	CH6	0.029		10
	Rear	0	CH11	0.019		11
	Top	0	CH11	0.033		12

Note 1: Due to maximum measured power for 802.11g mode were greater than the rated power, hence the scaled SAR value is not required.

Refer to attached Appendix B for details of test results.

5.2 Measurement Uncertainty

5.2.1 Measurement uncertainty evaluation

This measurement uncertainty budget is suggested by IEEE P1528. The breakdown of the individual uncertainties is as follows:

Table 14: Measurement Uncertainties

Source	Type	Uncertainty Value (%)	Probability Distribution	K	C1 (1g)	C1 (10g)	Standard uncertainty ul(%)1g	Standard uncertainty ul(%)10g	Degree of freedom Veff or Vi
Measurement system repetivity	A	0.5	N	1	1	1	0.5	0.5	9
Probe calibration	B	5.9	N	1	1	1	5.9	5.9	∞
Isotropy	B	4.7	R	√3	1	1	2.7	2.7	∞
Linearity	B	4.7	R	√3	1	1	2.7	2.7	∞
Probe modulation response	B	0	R	√3	1	1	0	0	∞
Detection limits	B	1.0	R	√3	1	1	0.6	0.6	∞
Boundary effect	B	1.9	R	√3	1	1	1.1	1.1	∞
Readout electronics	B	1.0	N	1	1	1	1.0	1.0	∞
Response time	B	0	R	√3	1	1	0	0	∞
Integration time	B	4.32	R	√3	1	1	2.5	2.5	∞
RF ambient conditions – noise	B	0	R	√3	1	1	0	0	∞
RF ambient conditions – reflections	B	3	R	√3	1	1	1.73	1.73	∞
Probe positioner mech. restrictions	B	0.4	R	√3	1	1	0.2	0.2	∞
Probe positioning with respect to phantom shell	B	2.9	R	√3	1	1	1.7	1.7	∞
Post-processing	B	0	R	√3	1	1	0	0	∞
Test sample related									
Device holder uncertainty	A	2.94	N	1	1	1	2.94	2.94	M-1
Test sample positioning	A	4.1	N	1	1	1	4.1	4.1	M-1
Power scaling	B	5.0	R	√3	1	1	2.9	2.9	∞
Drift of output power (measured SAR drift)	B	5.0	R	√3	1	1	2.9	2.9	∞
Phantom and set-up									

Phantom uncertainty (shape and thickness tolerances)	B	4.0	R	$\sqrt{3}$	1	1	2.3	2.1	∞
Algorithm for correcting SAR for deviations in permittivity and conductivity	B	1.9	N	1	1	0,84	1,9	1,6	∞
Liquid conductivity (meas.)	A	0.55	N	1	0.78	0.71	0.24	0.21	M-1
Liquid permittivity (meas.)	A	0.19	N	1	0.23	0.26	0.09	0.06	M
Liquid permittivity – temperature uncertainty	A	5.0	R	$\sqrt{3}$	0,78	0,71	1.4	1.1	∞
Liquid conductivity – temperature uncertainty	A	5.0	R	$\sqrt{3}$	0.23	0,26	1.2	0.8	∞
Combined standard uncertainty	$u_c = \sqrt{\sum_{i=1}^{21} c_i^2 u_i^2}$						10.57	10.32	
Expanded uncertainty (95 %conf. interval)	$u_e = 2u_c$		N	K=2			21.14	20.64	

6. Photographs of the Test Set-Up

Photograph 1: Set-up for Rear side



Photograph 2: Set-up for Top side



7. List of Tables

Table 1: List of Test and Measurement Equipment	5
Table 2: Technical Specification	6
Table 3: List of WLAN Channel of 802.11b/g/n mode.....	7
Table 4: List of Bluetooth Channel (BDR & EDR mode).....	7
Table 5: List of Bluetooth Channel (LE mode).....	8
Table 6: Configuration of EUT	10
Table 7: Composition of Tissue Simulating Liquid.....	11
Table 8: System Check Results of Dielectric Performance of Tissue Simulating Liquid	11
Table 9: System Check Results of System Verification	11
Table 10: Conducted Power of 802.11b/g/n.....	16
Table 11: Conducted Power of Bluetooth (BDR & EDR mode).....	17
Table 12: Conducted Power of Bluetooth (LE mode)	17
Table 13: Test result of SAR Values.....	18
Table 14: Measurement Uncertainties	19

8. List of Photographs

Photograph 1: Set-up for Rear side	21
Photograph 2: Set-up for Top side.....	21

Test Laboratory: Audix SAR Lab

Date: 09/07/2013

CW_2450MHz

DUT: Dipole 2450 MHz D2450V2; Type: D2450V2; Serial: D2450V2 - SN:862

Communication System: UID 0, CW; Frequency: 2450 MHz

Medium parameters used: $f = 2450$ MHz; $\sigma = 1.969$ mho/m; $\epsilon_r = 54.330$; $\rho = 1000$ kg/m³

Phantom section: Flat Section

Measurement Standard: DASYS (IEEE/IEC/ANSI C63.19-2007)

DASY5 Configuration:

- Probe: ES3DV3 - SN3139; ConvF(4.16, 4.16, 4.16); Calibrated: 25/07/2012;
- Sensor-Surface: 4mm (Mechanical Surface Detection)
- Electronics: DAE4 Sn899; Calibrated: 25/07/2012
- Phantom: ELI 4.0; Type: QDOVA001BA; Serial: 1112
- Measurement SW: DASYS2, Version 52.8 (7); SEMCAD X Version 14.6.10 (7164)

Configuration/CW_2450/Area Scan (41x61x1):

Measurement grid: dx=15mm, dy=15mm

Maximum value of SAR (interpolated) = 15.443 W/kg

Configuration/CW_2450/Zoom Scan (7x7x7)/Cube 0:

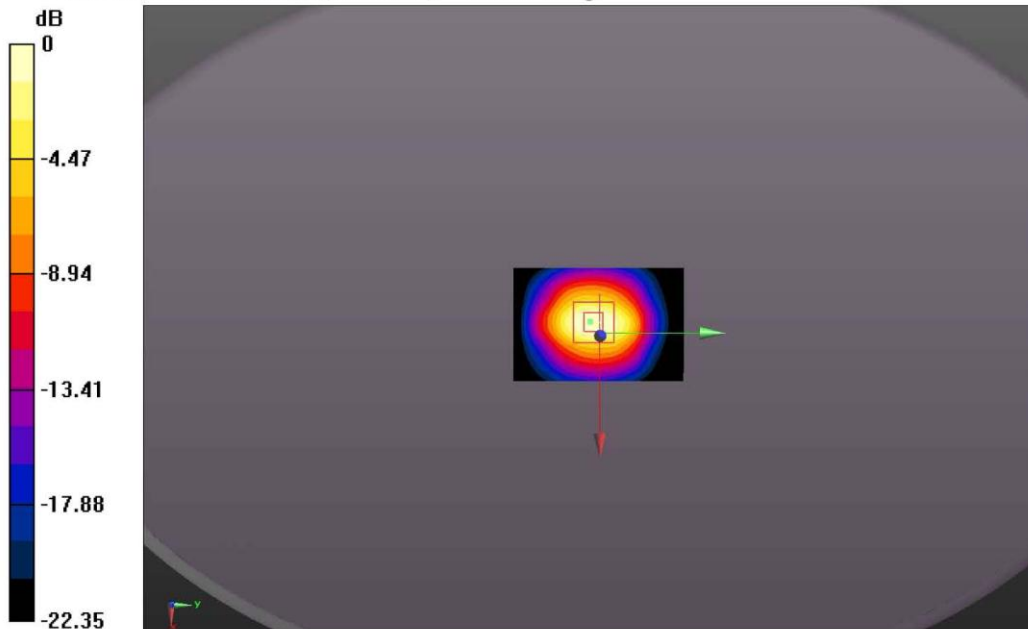
Measurement grid: dx=5mm, dy=5mm, dz=5mm

Reference Value = 84.579 V/m; Power Drift = -0.08 dB

Peak SAR (extrapolated) = 25.8320

SAR(1 g) = 12.305 W/kg; SAR(10 g) = 5.646 W/kg

Maximum value of SAR (measured) = 14.297 W/kg



Test Plots 1: Rear side, CH1, 802.11b

Test Laboratory: Audix SAR Lab
802.11b_CH1-Back(2412MHz)

Date: 09/07/2013

DUT: Tablet PC

Communication System: UID 0, IEEE 802.11b WiFi 2.4 GHz (DSSS, 1 Mbps) (0);
Frequency: 2412 MHz; Medium parameters used: $f = 2412$ MHz; $\sigma = 1.945$ S/m; $\epsilon_r = 54.438$; $\rho = 1000$ kg/m³; Phantom section: Flat Section
Measurement Standard: DASYS (IEEE/IEC/ANSI C63.19-2007)

DASY5 Configuration:

- Probe: ES3DV3 - SN3139; ConVF(4.16, 4.16, 4.16); Calibrated: 25/07/2012;
- Sensor-Surface: 4mm (Mechanical Surface Detection)
- Electronics: DAE4 Sn899; Calibrated: 25/07/2012
- Phantom: ELI 4.0; Type: QDOVA001BA; Serial: 1112
- Measurement SW: DASYS2, Version 52.8 (7); SEMCAD X Version 14.6.10 (7164)

Configuration/802.11b_CH1-Back/Area Scan (61x81x1):

Interpolated grid: $dx=1.500$ mm, $dy=1.500$ mm

Maximum value of SAR (interpolated) = 0.0367 W/kg

Configuration/802.11b_CH1-Back/Zoom Scan (7x7x7)/Cube 0:

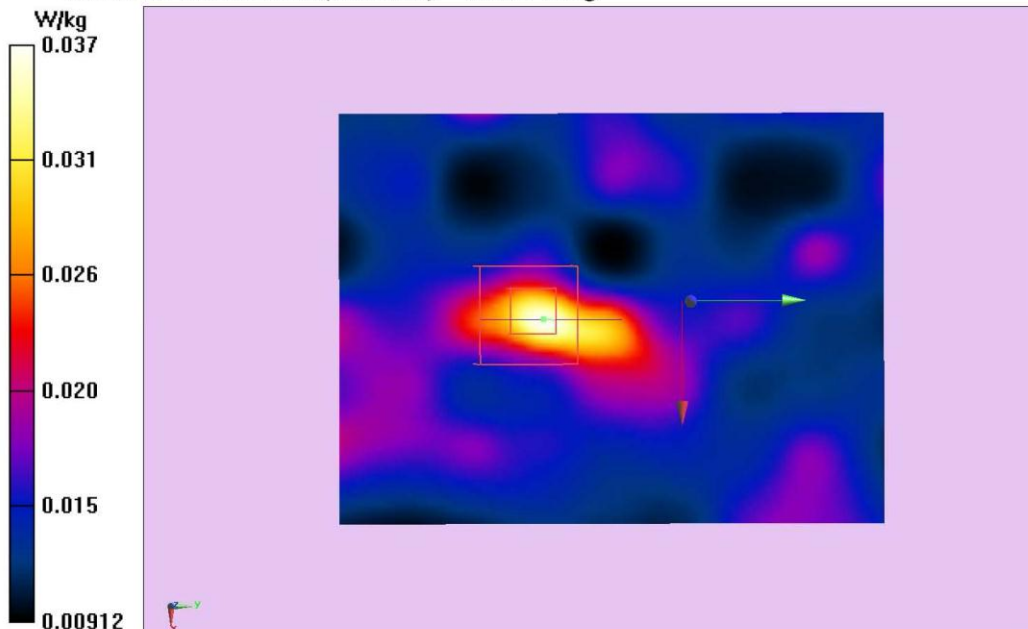
Measurement grid: $dx=5$ mm, $dy=5$ mm, $dz=5$ mm

Reference Value = 3.148 V/m; Power Drift = -0.04 dB

Peak SAR (extrapolated) = 0.0600 W/kg

SAR(1 g) = 0.033 W/kg; SAR(10 g) = 0.022 W/kg

Maximum value of SAR (measured) = 0.0381 W/kg



Test Plots 2: Top side, CH1, 802.11b

Test Laboratory: Audix SAR Lab
802.11b_CH1-Top(2412MHz)

Date: 09/07/2013

DUT: Tablet PC

Communication System: UID 0, IEEE 802.11b WiFi 2.4 GHz (DSSS, 1 Mbps) (0);
Frequency: 2412 MHz; Medium parameters used: $f = 2412$ MHz; $\sigma = 1.945$ S/m; $\epsilon_r = 54.438$; $\rho = 1000$ kg/m³; Phantom section: Flat Section
Measurement Standard: DASYS (IEEE/IEC/ANSI C63.19-2007)

DASY5 Configuration:

- Probe: ES3DV3 - SN3139; ConvF(4.16, 4.16, 4.16); Calibrated: 25/07/2012;
- Sensor-Surface: 4mm (Mechanical Surface Detection)
- Electronics: DAE4 Sn899; Calibrated: 25/07/2012
- Phantom: ELI 4.0; Type: QDOVA001BA; Serial: 1112
- Measurement SW: DASYS2, Version 52.8 (7); SEMCAD X Version 14.6.10 (7164)

Configuration/802.11b_CH1-Top/Area Scan (51x61x1):

Interpolated grid: dx=1.500 mm, dy=1.500 mm

Maximum value of SAR (interpolated) = 0.0361 W/kg

Configuration/802.11b_CH1-Top/Zoom Scan (7x7x7)/Cube 0:

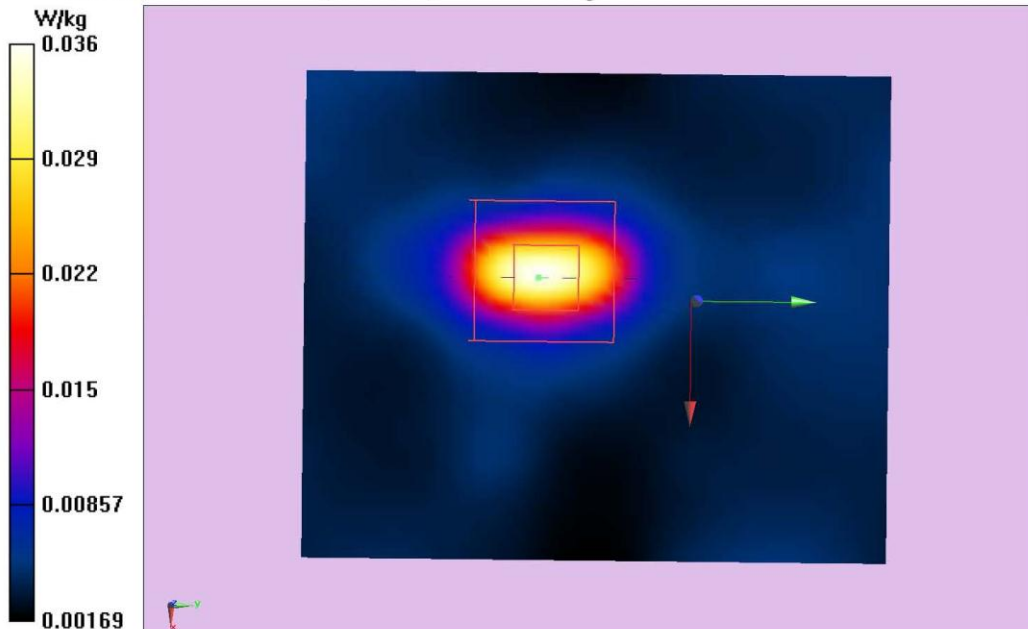
Measurement grid: dx=5mm, dy=5mm, dz=5mm

Reference Value = 2.640 V/m; Power Drift = -0.20 dB

Peak SAR (extrapolated) = 0.0780 W/kg

SAR(1 g) = 0.032 W/kg; SAR(10 g) = 0.014 W/kg

Maximum value of SAR (measured) = 0.0363 W/kg



Test Plots 3: Rear side, CH6, 802.11b

Test Laboratory: Audix SAR Lab
802.11b_CH6-Back(2437MHz)

Date: 09/07/2013

DUT: Tablet PC

Communication System: UID 0, IEEE 802.11b WiFi 2.4 GHz (DSSS, 1 Mbps) (0);
Frequency: 2437 MHz; Medium parameters used: $f = 2437$ MHz; $\sigma = 1.978$ S/m; $\epsilon_r = 54.378$; $\rho = 1000$ kg/m³; Phantom section: Flat Section
Measurement Standard: DASYS (IEEE/IEC/ANSI C63.19-2007)

DASY5 Configuration:

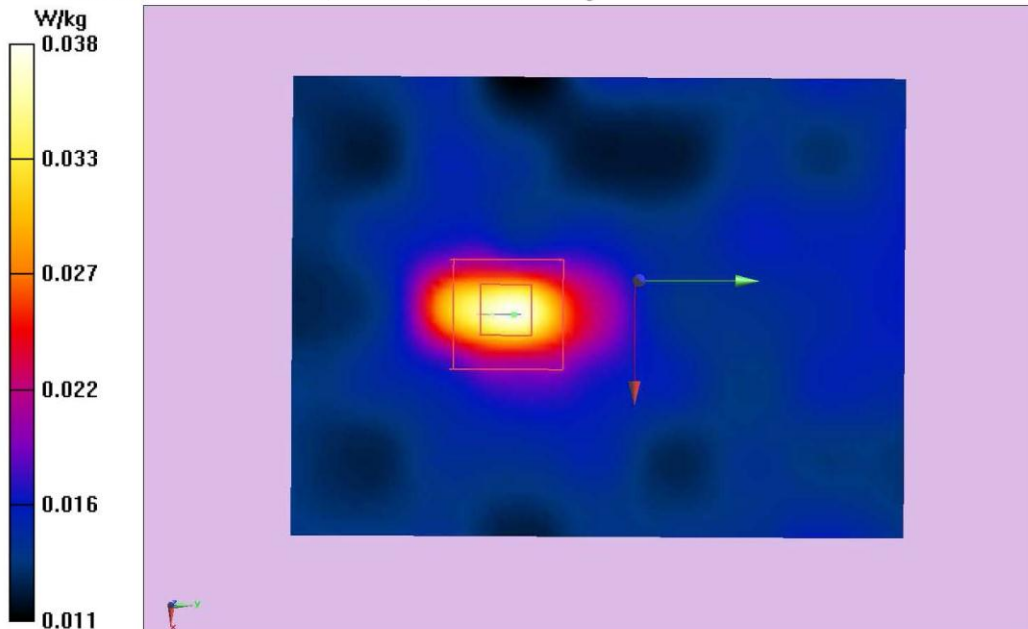
- Probe: ES3DV3 - SN3139; ConvF(4.16, 4.16, 4.16); Calibrated: 25/07/2012;
- Sensor-Surface: 4mm (Mechanical Surface Detection)
- Electronics: DAE4 Sn899; Calibrated: 25/07/2012
- Phantom: ELI 4.0; Type: QDOVA001BA; Serial: 1112
- Measurement SW: DASY52, Version 52.8 (7); SEMCAD X Version 14.6.10 (7164)

Configuration/802.11b_CH6-Back/Area Scan (61x81x1):

Interpolated grid: dx=1.500 mm, dy=1.500 mm
Maximum value of SAR (interpolated) = 0.0382 W/kg

Configuration/802.11b_CH6-Back/Zoom Scan (7x7x7)/Cube 0:

Measurement grid: dx=5mm, dy=5mm, dz=5mm
Reference Value = 2.989 V/m; Power Drift = -0.02 dB
Peak SAR (extrapolated) = 0.0740 W/kg
SAR(1 g) = 0.035 W/kg; SAR(10 g) = 0.023 W/kg
Maximum value of SAR (measured) = 0.0378 W/kg



Test Plots 4: Top side, CH6, 802.11b

Test Laboratory: Audix SAR Lab
802.11b_CH6-Top(2437MHz)

Date: 09/07/2013

DUT: Tablet PC

Communication System: UID 0, IEEE 802.11b WiFi 2.4 GHz (DSSS, 1 Mbps) (0);
Frequency: 2437 MHz; Medium parameters used: $f = 2437$ MHz; $\sigma = 1.978$ S/m; $\epsilon_r = 54.378$; $\rho = 1000$ kg/m³; Phantom section: Flat Section
Measurement Standard: DASYS (IEEE/IEC/ANSI C63.19-2007)

DASY5 Configuration:

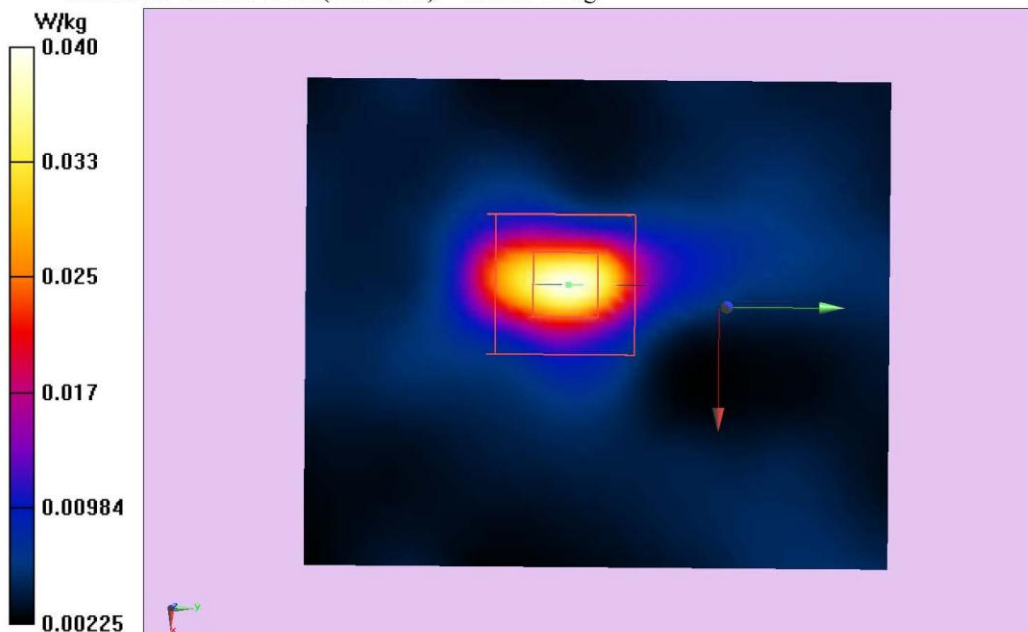
- Probe: ES3DV3 - SN3139; ConvF(4.16, 4.16, 4.16); Calibrated: 25/07/2012;
- Sensor-Surface: 4mm (Mechanical Surface Detection)
- Electronics: DAE4 Sn899; Calibrated: 25/07/2012
- Phantom: ELI 4.0; Type: QDOVA001BA; Serial: 1112
- Measurement SW: DASY52, Version 52.8 (7); SEMCAD X Version 14.6.10 (7164)

Configuration/802.11b_CH6-Top/Area Scan (51x61x1):

Interpolated grid: $dx=1.500$ mm, $dy=1.500$ mm
Maximum value of SAR (interpolated) = 0.0402 W/kg

Configuration/802.11b_CH6-Top/Zoom Scan (7x7x7)/Cube 0:

Measurement grid: $dx=5$ mm, $dy=5$ mm, $dz=5$ mm
Reference Value = 3.163 V/m; Power Drift = 0.11 dB
Peak SAR (extrapolated) = 0.0930 W/kg
SAR(1 g) = 0.035 W/kg; SAR(10 g) = 0.016 W/kg
Maximum value of SAR (measured) = 0.0393 W/kg



Test Plots 5: Rear side, CH11, 802.11b

Test Laboratory: Audix SAR Lab
802.11b_CH11-Back(2462MHz)

Date: 09/07/2013

DUT: Tablet PC

Communication System: UID 0, IEEE 802.11b WiFi 2.4 GHz (DSSS, 1 Mbps) (0);
Frequency: 2462 MHz; Medium parameters used: $f = 2462$ MHz; $\sigma = 2.008$ S/m; $\epsilon_r = 54.28$; $\rho = 1000$ kg/m³; Phantom section: Flat Section

Measurement Standard: DASYS (IEEE/IEC/ANSI C63.19-2007)

DASY5 Configuration:

- Probe: ES3DV3 - SN3139; ConvF(4.16, 4.16, 4.16); Calibrated: 25/07/2012;
- Sensor-Surface: 4mm (Mechanical Surface Detection)
- Electronics: DAE4 Sn899; Calibrated: 25/07/2012
- Phantom: ELI 4.0; Type: QDOVA001BA; Serial: 1112
- Measurement SW: DASY52, Version 52.8 (7); SEMCAD X Version 14.6.10 (7164)

Configuration/802.11b_CH11-Back/Area Scan (61x81x1):

Interpolated grid: dx=1.500 mm, dy=1.500 mm

Maximum value of SAR (interpolated) = 0.0399 W/kg

Configuration/802.11b_CH11-Back/Zoom Scan (7x7x7)/Cube 0:

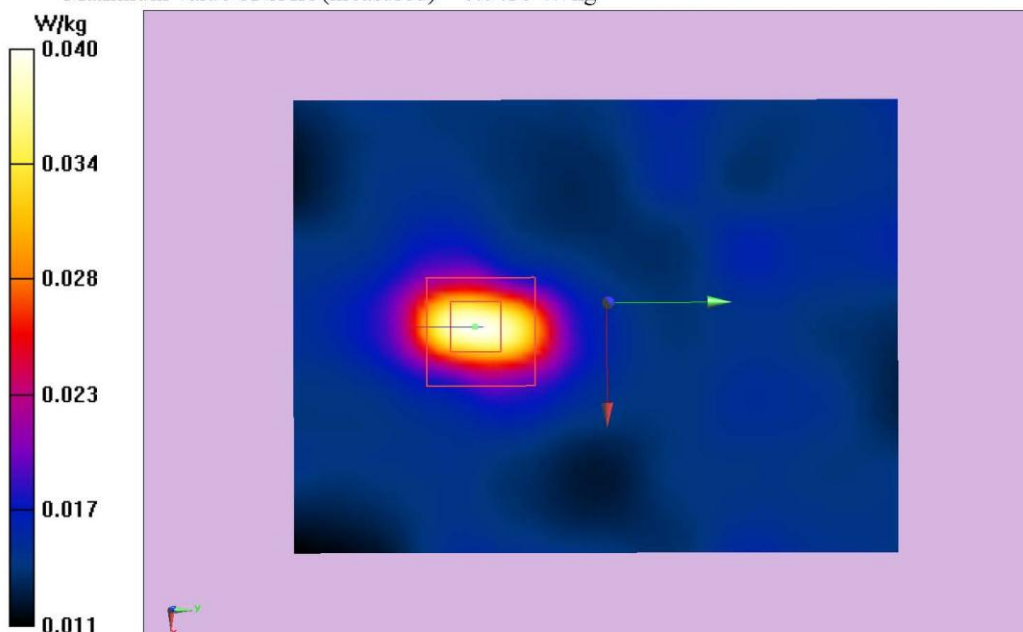
Measurement grid: dx=5mm, dy=5mm, dz=5mm

Reference Value = 2.764 V/m; Power Drift = 0.18 dB

Peak SAR (extrapolated) = 0.0930 W/kg

SAR(1 g) = 0.040 W/kg; SAR(10 g) = 0.025 W/kg

Maximum value of SAR (measured) = 0.0436 W/kg



Test Plots 6: Top side, CH11, 802.11b

Test Laboratory: Audix SAR Lab
802.11b_CH11-Top(2462MHz)

Date: 09/07/2013

DUT: Tablet PC

Communication System: UID 0, IEEE 802.11b WiFi 2.4 GHz (DSSS, 1 Mbps) (0);
Frequency: 2462 MHz; Medium parameters used: $f = 2462$ MHz; $\sigma = 2.008$ S/m; $\epsilon_r = 54.28$; $\rho = 1000$ kg/m³; Phantom section: Flat Section

Measurement Standard: DASYS (IEEE/IEC/ANSI C63.19-2007)

DASY5 Configuration:

- Probe: ES3DV3 - SN3139; ConvF(4.16, 4.16, 4.16); Calibrated: 25/07/2012;
- Sensor-Surface: 4mm (Mechanical Surface Detection)
- Electronics: DAE4 Sn899; Calibrated: 25/07/2012
- Phantom: ELI 4.0; Type: QDOVA001BA; Serial: 1112
- Measurement SW: DASY52, Version 52.8 (7); SEMCAD X Version 14.6.10 (7164)

Configuration/802.11b_CH11-Top/Area Scan (51x61x1):

Interpolated grid: dx=1.500 mm, dy=1.500 mm

Maximum value of SAR (interpolated) = 0.0472 W/kg

Configuration/802.11b_CH11-Top/Zoom Scan (7x7x7)/Cube 0:

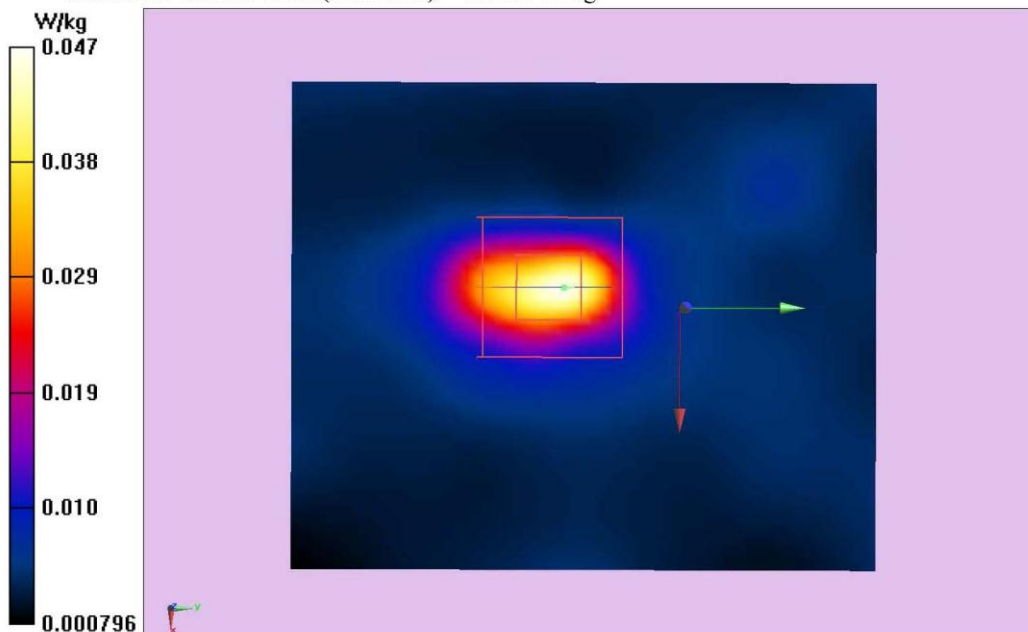
Measurement grid: dx=5mm, dy=5mm, dz=5mm

Reference Value = 3.060 V/m; Power Drift = 0.01 dB

Peak SAR (extrapolated) = 0.105 W/kg

SAR(1 g) = 0.041 W/kg; SAR(10 g) = 0.018 W/kg

Maximum value of SAR (measured) = 0.0471 W/kg



Test Plots 7: Rear side, CH1, 802.11g

Test Laboratory: Audix SAR Lab
802.11g_CH1-Back(2412MHz)

Date: 09/07/2013

DUT: Tablet PC

Communication System: UID 0, IEEE 802.11g WiFi 2.4 GHz (DSSS-OFDM, 6 Mbps)
(0); Frequency: 2412 MHz; Medium parameters used: $f = 2412$ MHz; $\sigma = 1.945$ S/m; $\epsilon_r = 54.438$; $\rho = 1000$ kg/m³; Phantom section: Flat Section
Measurement Standard: DASYS (IEEE/IEC/ANSI C63.19-2007)

DASY5 Configuration:

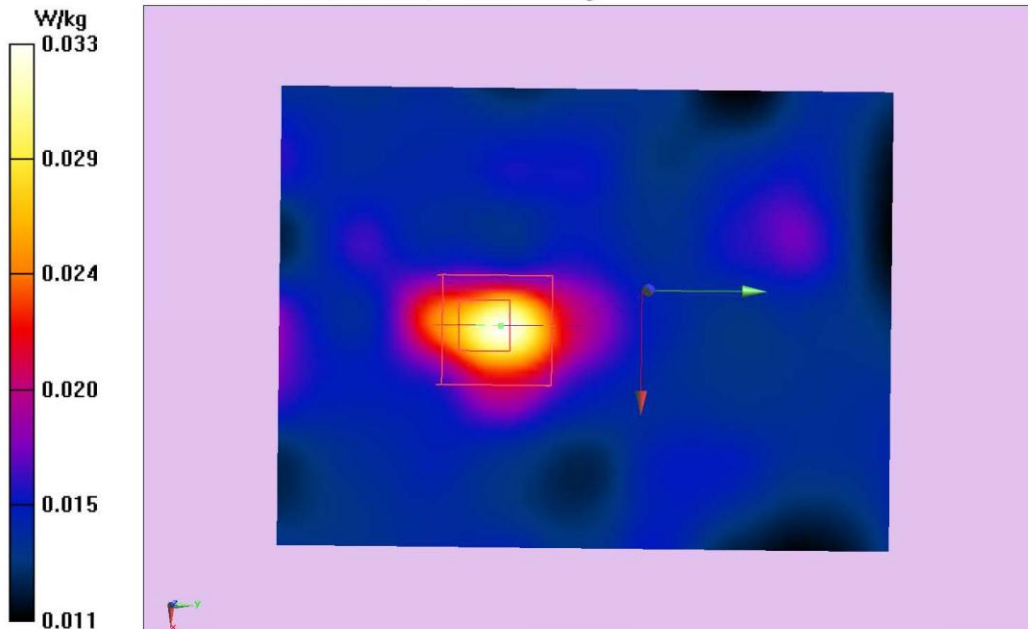
- Probe: ES3DV3 - SN3139; ConvF(4.16, 4.16, 4.16); Calibrated: 25/07/2012;
- Sensor-Surface: 4mm (Mechanical Surface Detection)
- Electronics: DAE4 Sn899; Calibrated: 25/07/2012
- Phantom: ELI 4.0; Type: QDOVA001BA; Serial: 1112
- Measurement SW: DASY52, Version 52.8 (7); SEMCAD X Version 14.6.10 (7164)

Configuration/802.11g_CH1-Back/Area Scan (61x81x1):

Interpolated grid: $dx=1.500$ mm, $dy=1.500$ mm
Maximum value of SAR (interpolated) = 0.0332 W/kg

Configuration/802.11g_CH1-Back/Zoom Scan (7x7x7)/Cube 0:

Measurement grid: $dx=5$ mm, $dy=5$ mm, $dz=5$ mm
Reference Value = 2.936 V/m; Power Drift = -0.12 dB
Peak SAR (extrapolated) = 0.0490 W/kg
SAR(1 g) = 0.029 W/kg; SAR(10 g) = 0.021 W/kg
Maximum value of SAR (measured) = 0.0312 W/kg



Test Plots 8: Top side, CH1, 802.11g

Test Laboratory: Audix SAR Lab
802.11g_CH1-Top(2412MHz)

Date: 09/07/2013

DUT: Tablet PC

Communication System: UID 0, IEEE 802.11g WiFi 2.4 GHz (DSSS-OFDM, 6 Mbps)
(0); Frequency: 2412 MHz; Medium parameters used: $f = 2412$ MHz; $\sigma = 1.945$ S/m; $\epsilon_r =$
54.438; $\rho = 1000$ kg/m³; Phantom section: Flat Section

Measurement Standard: DASYS (IEEE/IEC/ANSI C63.19-2007)

DASY5 Configuration:

- Probe: ES3DV3 - SN3139; ConvF(4.16, 4.16, 4.16); Calibrated: 25/07/2012;
- Sensor-Surface: 4mm (Mechanical Surface Detection)
- Electronics: DAE4 Sn899; Calibrated: 25/07/2012
- Phantom: ELI 4.0; Type: QDOVA001BA; Serial: 1112
- Measurement SW: DASY52, Version 52.8 (7); SEMCAD X Version 14.6.10 (7164)

Configuration/802.11g_CH1-Top/Area Scan (51x61x1):

Interpolated grid: dx=1.500 mm, dy=1.500 mm

Maximum value of SAR (interpolated) = 0.0292 W/kg

Configuration/802.11g_CH1-Top/Zoom Scan (7x7x7)/Cube 0:

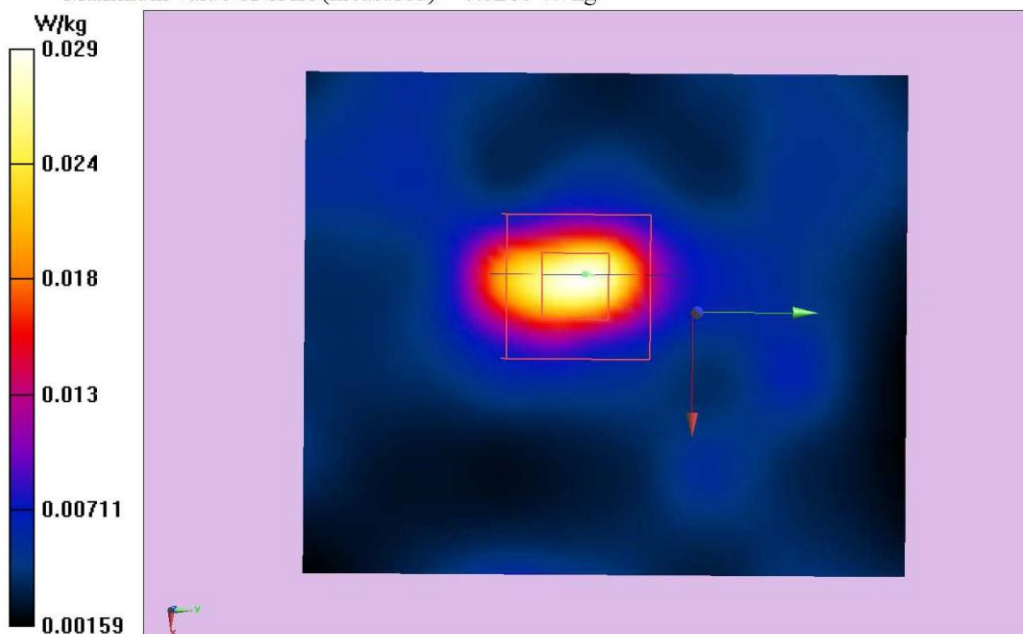
Measurement grid: dx=5mm, dy=5mm, dz=5mm

Reference Value = 2.635 V/m; Power Drift = 0.10 dB

Peak SAR (extrapolated) = 0.0550 W/kg

SAR(1 g) = 0.025 W/kg; SAR(10 g) = 0.012 W/kg

Maximum value of SAR (measured) = 0.0286 W/kg



Test Plots 9: Rear side, CH6, 802.11g

Test Laboratory: Audix SAR Lab
802.11g_CH6-Back(2437MHz)

Date: 09/07/2013

DUT: Tablet PC

Communication System: UID 0, IEEE 802.11g WiFi 2.4 GHz (DSSS-OFDM, 6 Mbps)
(0); Frequency: 2437 MHz; Medium parameters used : $f = 2437$ MHz; $\sigma = 1.978$ S/m; $\epsilon_r =$
54.378; $\rho = 1000$ kg/m³; Phantom section: Flat Section

Measurement Standard: DASYS (IEEE/IEC/ANSI C63.19-2007)

DASY5 Configuration:

- Probe: ES3DV3 - SN3139; ConvF(4.16, 4.16, 4.16); Calibrated: 25/07/2012;
- Sensor-Surface: 4mm (Mechanical Surface Detection)
- Electronics: DAE4 Sn899; Calibrated: 25/07/2012
- Phantom: ELI 4.0; Type: QDOVA001BA; Serial: 1112
- Measurement SW: DASY52, Version 52.8 (7); SEMCAD X Version 14.6.10 (7164)

Configuration/802.11g_CH6-Back/Area Scan (61x81x1):

Interpolated grid: dx=1.500 mm, dy=1.500 mm

Maximum value of SAR (interpolated) = 0.0227 W/kg

Configuration/802.11g_CH6-Back/Zoom Scan (7x7x7)/Cube 0:

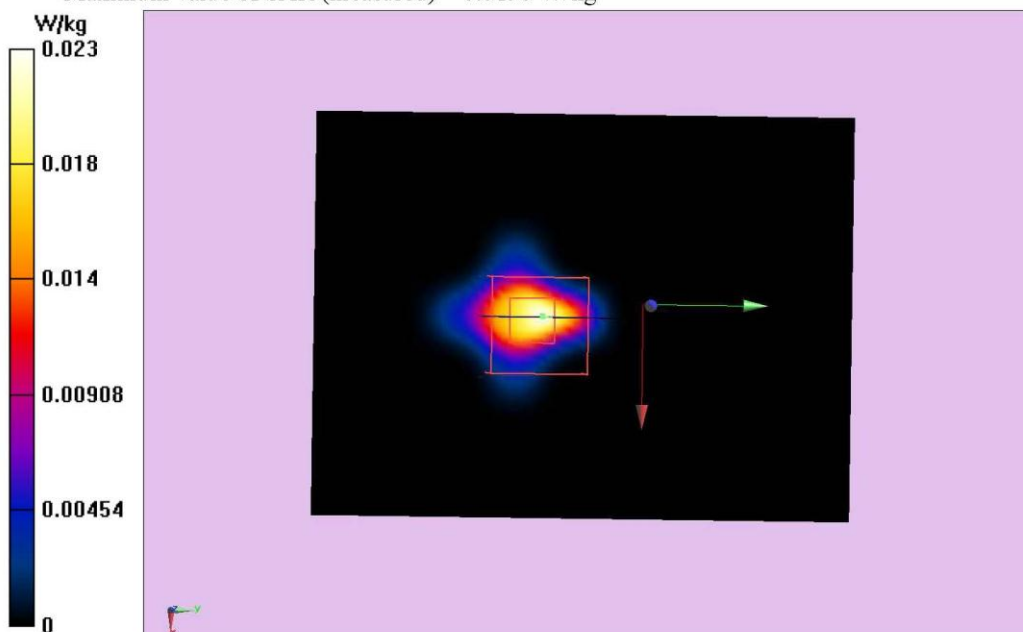
Measurement grid: dx=5mm, dy=5mm, dz=5mm

Reference Value = 1.677 V/m; Power Drift = 0.08 dB

Peak SAR (extrapolated) = 0.0360 W/kg

SAR(1 g) = 0.015 W/kg; SAR(10 g) = 0.00539 W/kg

Maximum value of SAR (measured) = 0.0190 W/kg



Test Plots 10: Top side, CH6, 802.11g

Test Laboratory: Audix SAR Lab
802.11g_CH6-Top(2437MHz)

Date: 09/07/2013

DUT: Tablet PC

Communication System: UID 0, IEEE 802.11g WiFi 2.4 GHz (DSSS-OFDM, 6 Mbps)
(0); Frequency: 2437 MHz; Medium parameters used : $f = 2437$ MHz; $\sigma = 1.978$ S/m; $\epsilon_r =$
54.378; $\rho = 1000$ kg/m³; Phantom section: Flat Section

Measurement Standard: DASYS (IEEE/IEC/ANSI C63.19-2007)

DASYS Configuration:

- Probe: ES3DV3 - SN3139; ConvF(4.16, 4.16, 4.16); Calibrated: 25/07/2012;
- Sensor-Surface: 4mm (Mechanical Surface Detection)
- Electronics: DAE4 Sn899; Calibrated: 25/07/2012
- Phantom: ELI 4.0; Type: QDOVA001BA; Serial: 1112
- Measurement SW: DASYS2, Version 52.8 (7); SEMCAD X Version 14.6.10 (7164)

Configuration/802.11g_CH6-Top/Area Scan (51x61x1):

Interpolated grid: dx=1.500 mm, dy=1.500 mm

Maximum value of SAR (interpolated) = 0.0302 W/kg

Configuration/802.11g_CH6-Top/Zoom Scan (7x7x7)/Cube 0:

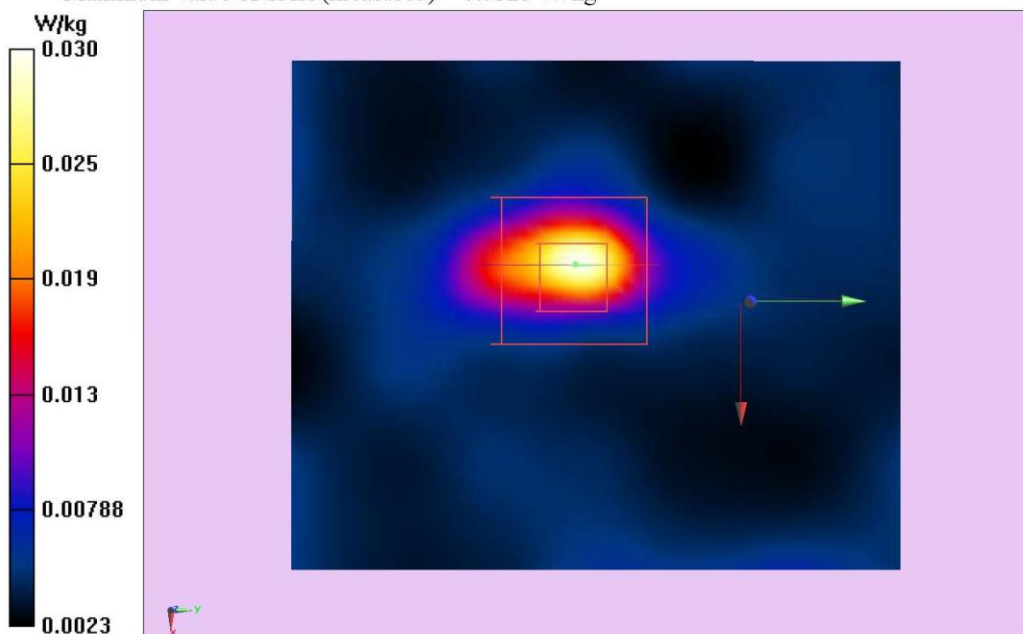
Measurement grid: dx=5mm, dy=5mm, dz=5mm

Reference Value = 3.013 V/m; Power Drift = 0.16 dB

Peak SAR (extrapolated) = 0.0760 W/kg

SAR(1 g) = 0.029 W/kg; SAR(10 g) = 0.014 W/kg

Maximum value of SAR (measured) = 0.0325 W/kg



Test Plots 11: Rear side, CH11, 802.11g

Test Laboratory: Audix SAR Lab
802.11g_CH11-Back(2462MHz)

Date: 09/07/2013

DUT: Tablet PC

Communication System: UID 0, IEEE 802.11g WiFi 2.4 GHz (DSSS-OFDM, 6 Mbps)
(0); Frequency: 2462 MHz; Medium parameters used: $f = 2462$ MHz; $\sigma = 2.008$ S/m; $\epsilon_r =$
54.28; $\rho = 1000$ kg/m³; Phantom section: Flat Section

Measurement Standard: DASYS (IEEE/IEC/ANSI C63.19-2007)

DASY5 Configuration:

- Probe: ES3DV3 - SN3139; ConvF(4.16, 4.16, 4.16); Calibrated: 25/07/2012;
- Sensor-Surface: 4mm (Mechanical Surface Detection)
- Electronics: DAE4 Sn899; Calibrated: 25/07/2012
- Phantom: ELI 4.0; Type: QDOVA001BA; Serial: 1112
- Measurement SW: DASY52, Version 52.8 (7); SEMCAD X Version 14.6.10 (7164)

Configuration/802.11g_CH11-Back/Area Scan (61x81x1):

Interpolated grid: dx=1.500 mm, dy=1.500 mm

Maximum value of SAR (interpolated) = 0.0537 W/kg

Configuration/802.11g_CH11-Back/Zoom Scan (7x7x7)/Cube 0:

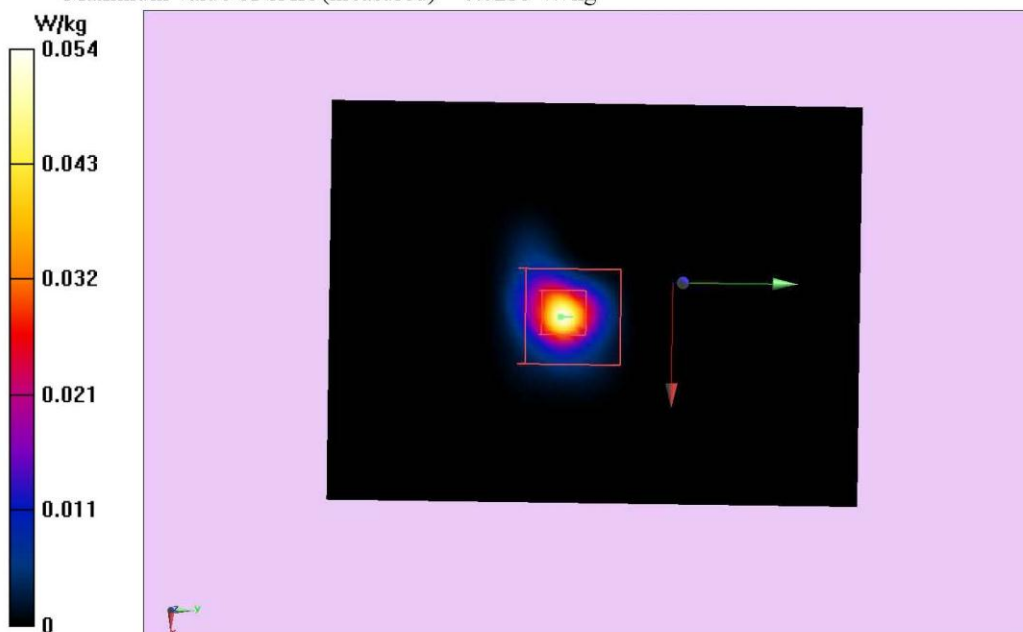
Measurement grid: dx=5mm, dy=5mm, dz=5mm

Reference Value = 2.127 V/m; Power Drift = 0.15 dB

Peak SAR (extrapolated) = 0.0390 W/kg

SAR(1 g) = 0.019 W/kg; SAR(10 g) = 0.00748 W/kg

Maximum value of SAR (measured) = 0.0235 W/kg



Test Plots 12: Top side, CH11, 802.11g

Test Laboratory: Audix SAR Lab
802.11g_CH11-Top(2462MHz)

Date: 09/07/2013

DUT: Tablet PC

Communication System: UID 0, IEEE 802.11g WiFi 2.4 GHz (DSSS-OFDM, 6 Mbps)
(0); Frequency: 2462 MHz; Medium parameters used: $f = 2462$ MHz; $\sigma = 2.008$ S/m; $\epsilon_r =$
54.28; $\rho = 1000$ kg/m³; Phantom section: Flat Section

Measurement Standard: DASYS (IEEE/IEC/ANSI C63.19-2007)

DASYS Configuration:

- Probe: ES3DV3 - SN3139; ConvF(4.16, 4.16, 4.16); Calibrated: 25/07/2012;
- Sensor-Surface: 4mm (Mechanical Surface Detection)
- Electronics: DAE4 Sn899; Calibrated: 25/07/2012
- Phantom: ELI 4.0; Type: QDOVA001BA; Serial: 1112
- Measurement SW: DASYS2, Version 52.8 (7); SEMCAD X Version 14.6.10 (7164)

Configuration/802.11g_CH11-Top/Area Scan (51x61x1):

Interpolated grid: dx=1.500 mm, dy=1.500 mm

Maximum value of SAR (interpolated) = 0.0361 W/kg

Configuration/802.11g_CH11-Top/Zoom Scan (7x7x7)/Cube 0:

Measurement grid: dx=5mm, dy=5mm, dz=5mm

Reference Value = 3.183 V/m; Power Drift = 0.11 dB

Peak SAR (extrapolated) = 0.0850 W/kg

SAR(1 g) = 0.033 W/kg; SAR(10 g) = 0.015 W/kg

Maximum value of SAR (measured) = 0.0374 W/kg

