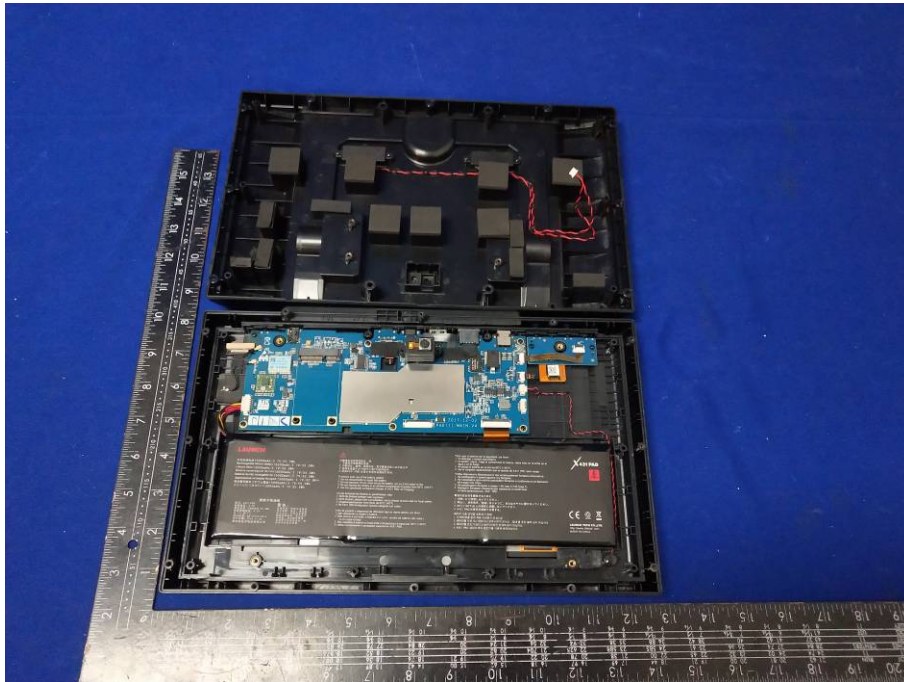


Internal Photo



LAUNCH

可充电锂电池 15000mAh/3.7V/55.5Wh
Rechargeable lithium battery 15000mAh/3.7V/55.5Wh
Lithium-Akku 15000mAh/3.7V/55.5Wh
Bateria recarregável de lítio 15000mAh/3.7V/55.5Wh
Bateria de lítio recarregable de 15000mAh/3.7V/55.5Wh
Заряджаемая литиевая батарея 15000mAh/3.7V/55.5Wh
再充電可能なリチウム電池 15000mAh/3.7V/55.5Wh
충전가능한 리튬배터리 15000mAh/3.7V/55.5Wh

锂离子电池组

型号: X431 PAD
标称电压: 3.7V
额定容量: 15000mAh 55.5Wh
充电限制电压: 4.2V
执行标准: GB 31241-2014
生产日期: 2018.11.01
深圳市嘉洋电池有限公司

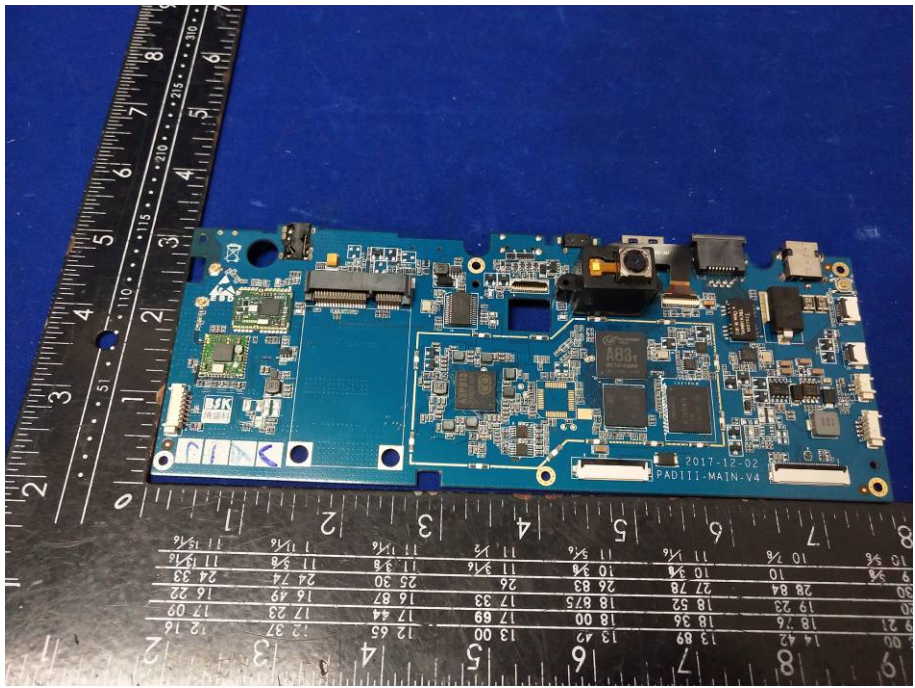
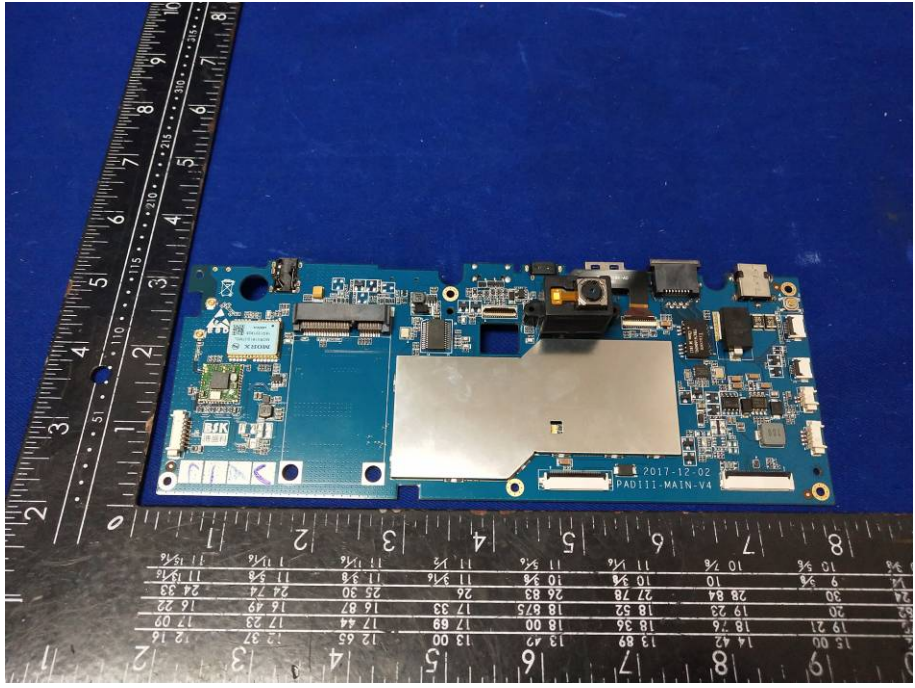
警告:
只能使用厂家指定充电器。
禁止拆解、撞击、挤压或投入火中，不可任意连接。
避免短路电极，其出故障。
要拆卸，请勿连续使用。
请勿置于高温环境中，电池浸水后禁止使用。

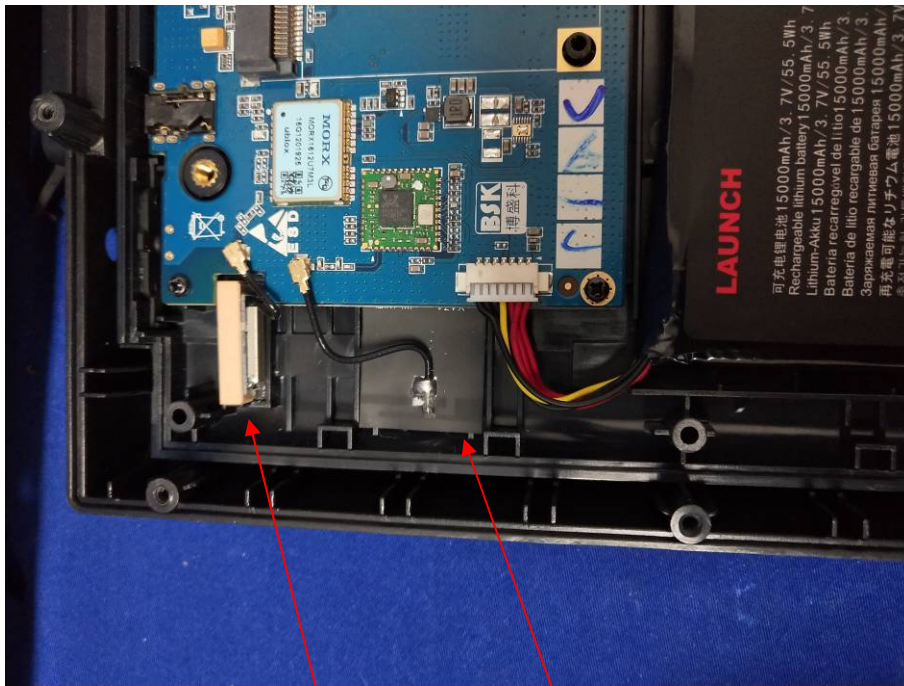
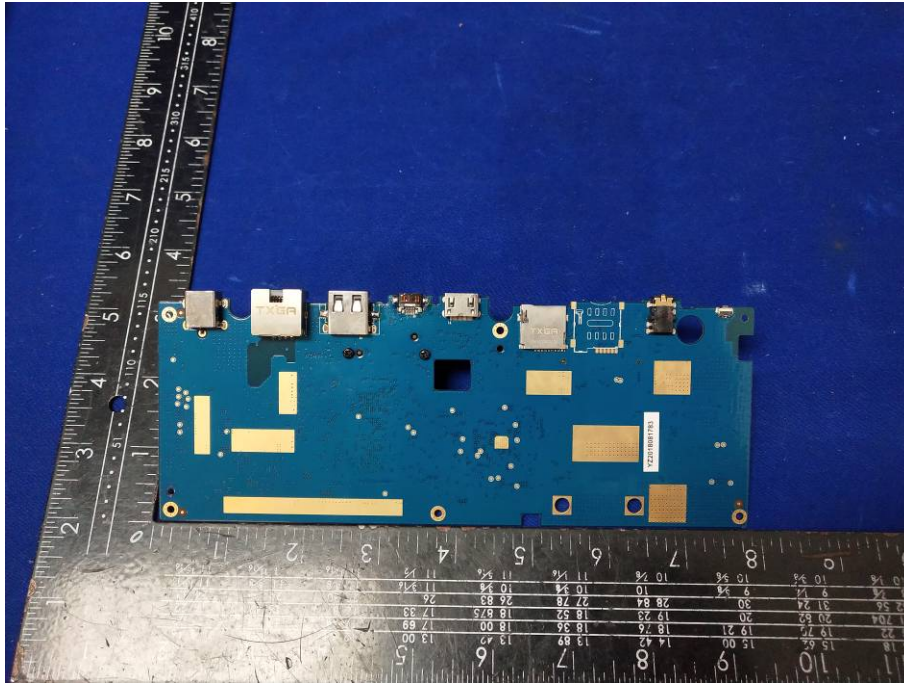


为保锂电池使用的安全，请：
1. 不要将电池短路或充电。
2. 不要挤压、刺刺、短路电池，更不要将其投入水中或火中。
3. 勿将电池置于大于60°C (140°F)的环境中。
4. 使用X431 PAD 配置的专用充电器进行充电。
To ensure safe use of the battery, please:
1. Do not disassemble or repair the battery.
2. Do not squeeze, thrust, short-circuit the battery, nor put it into water or fire.
3. Do not expose the battery in an ambient temperature of greater than 60°C (140°F).
4. Use the specifically configured charger of X431 PAD for charging.

Um die Sicherheit der Batterie zu gewährleisten, bitte:
1. Nicht die Batterie zerlegen oder reparieren.
2. Nicht drücken, platzen oder kurzschließen, nie ins Wasser tauchen oder ins Feuer werfen.
3. Umgebungstemperatur nicht höher als 60°C (140°F).
4. Mit X431 PAD-Konfiguration Spezial-Ladegerät zum Laden.

A fim de garantir a segurança da utilização siga as regras abaixo, por favor:
1. Não desmonte ou repare a bateria.
2. Não ocorra a extrusão, o impulso e o curto-circuito da bateria, não coloque-a em água ou fogo.
3. Não exponha a bateria no local onde a temperatura é maior que 60°C (140°F).
4. Utilize corretamente o carregador especial de X431 PAD.





GPS antenna WIFI+BT antenna

