

TEST REPORT

Reference No...... : WTS16S0141061E
FCC ID..... : XUJDS201
Applicant..... : Launch Tech Co., Ltd.
Address..... : Launch Industrial Park, North of Wuhe Rd., Banxuegang, Longgang, Shenzhen, China
Manufacturer : Launch Tech Co., Ltd.
Address..... : Launch Industrial Park, North of Wuhe Rd., Banxuegang, Longgang, Shenzhen, China
Product Name..... : Automotive Diagnosis Terminal
Model No..... : DS201
Brand..... LAUNCH
Standards..... : FCC CFR47 Part 15 Section 15.247:2015
Date of Receipt sample..... : Jan. 08, 2016
Date of Test..... : Jan. 09 - 23, 2016
Date of Issue..... : Feb. 03, 2016
Test Result..... : **Pass**

Remarks:

The results shown in this test report refer only to the sample(s) tested, this test report cannot be reproduced, except in full, without prior written permission of the company. The report would be invalid without specific stamp of test institute and the signatures of compiler and approver.

Prepared By:

Waltek Services (Shenzhen) Co., Ltd.

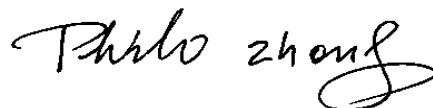
Address: 1/F., Fukangtai Building, West Baima Road, Songgang Street, Baoan District, Shenzhen, Guangdong, China
Tel :+86-755-83551033
Fax:+86-755-83552400

Tested by:



Zero Zhou / Test Engineer

Approved by:



Philo Zhong / Manager

2 Test Summary

Test Items	Test Requirement	Result
Radiated Spurious Emissions	15.205(a) 15.209 15.247(d)	PASS
Band edge	15.247(d) 15.205(a)	PASS
Bandwidth	15.247(a)(1)	PASS
Maximum Peak Output Power	15.247(b)(1)	PASS
Frequency Separation	15.247(a)(1)	PASS
Number of Hopping Frequency	15.247(a)(1)(iii)	PASS
Dwell time	15.247(a)(1)(iii)	PASS
Maximum Permissible Exposure (Exposure of Humans to RF Fields)	1.1307(b)(1)	PASS

3 Contents

	Page
1 COVER PAGE.....	1
2 TEST SUMMARY.....	2
3 CONTENTS.....	3
4 REPORT REVISION HISTORY.....	5
5 GENERAL INFORMATION.....	6
5.1 GENERAL DESCRIPTION OF E.U.T.....	6
5.2 DETAILS OF E.U.T.....	6
5.3 CHANNEL LIST.....	6
5.4 TEST MODE.....	7
5.5 TEST FACILITY.....	7
6 EQUIPMENT USED DURING TEST.....	8
6.1 EQUIPMENTS LIST.....	8
6.2 MEASUREMENT UNCERTAINTY.....	9
6.3 TEST EQUIPMENT CALIBRATION.....	9
7 RADIATED SPURIOUS EMISSIONS.....	10
7.1 EUT OPERATION.....	10
7.2 TEST SETUP.....	11
7.3 SPECTRUM ANALYZER SETUP.....	12
7.4 TEST PROCEDURE.....	13
7.5 SUMMARY OF TEST RESULTS.....	14
8 BAND EDGE MEASUREMENT.....	17
8.1 TEST PROCEDURE.....	17
8.2 TEST RESULT.....	18
9 BANDWIDTH MEASUREMENT.....	20
9.1 TEST PROCEDURE.....	20
9.2 TEST RESULT.....	20
10 MAXIMUM PEAK OUTPUT POWER.....	22
10.1 TEST PROCEDURE.....	22
10.2 TEST RESULT.....	22
11 HOPPING CHANNEL SEPARATION.....	25
11.1 TEST PROCEDURE.....	25
11.2 TEST RESULT.....	25
12 NUMBER OF HOPPING FREQUENCY.....	28
12.1 TEST PROCEDURE.....	28
12.2 TEST RESULT.....	28
13 DWELL TIME.....	29
13.1 TEST PROCEDURE.....	29
13.2 TEST RESULT.....	29
14 ANTENNA REQUIREMENT.....	32
15 RF EXPOSURE.....	33
15.1 REQUIREMENTS.....	33
15.2 THE PROCEDURES / LIMIT.....	33
15.3 MPE CALCULATION METHOD.....	34
16 PHOTOGRAPHS – MODEL DS201 TEST SETUP.....	35

16.1 PHOTOGRAPH - RADIATION SPURIOUS EMISSION TEST SETUP.....	35
17 PHOTOGRAPHS - CONSTRUCTIONAL DETAILS.....	37
17.1 MODEL DS201 -EXTERNAL PHOTOS.....	37
17.2 MODEL DS201-INTERNAL PHOTOS.....	41

4 Report Revision History

Report No.	Report Version	Description	Issue Date
WTS16S0141061E	NONE	Original	Feb. 03, 2016

5 General Information

5.1 General Description of E.U.T.

Product Name:	Automotive Diagnosis Terminal
Model No.:	DS201
Model Description:	N/A
Bluetooth Version:	V2.1
Operation Frequency:	2402MHz ~ 2480MHz, 79 channels in total
Type of Modulation:	GFSK
The lowest oscillator:	32.768KHz
Antenna installation:	PCB printed antenna
Antenna Gain:	0dBi

5.2 Details of E.U.T.

Technical Data:	DC 9V --18V
-----------------	-------------

5.3 Channel List

Channel No.	Frequency (MHz)	Channel No.	Frequency (MHz)	Channel No.	Frequency (MHz)	Channel No.	Frequency (MHz)
0	2402	1	2403	2	2404	3	2405
4	2406	5	2407	6	2408	7	2409
8	2410	9	2411	10	2412	11	2413
12	2414	13	2415	14	2416	15	2417
16	2418	17	2419	18	2420	19	2421
20	2422	21	2423	22	2424	23	2425
24	2426	25	2427	26	2428	27	2429
28	2430	29	2431	30	2432	31	2433
32	2434	33	2435	34	2436	35	2437
36	2438	37	2439	38	2440	39	2441
40	2442	41	2443	42	2444	43	2445
44	2446	45	2447	46	2448	47	2449
48	2450	49	2451	50	2452	51	2453
52	2454	53	2455	54	2456	55	2457
56	2458	57	2459	58	2460	59	2461
60	2462	61	2463	62	2464	63	2465
64	2466	65	2467	66	2468	67	2469
68	2470	69	2471	70	2472	71	2473
72	2474	73	2475	74	2476	75	2477
76	2478	77	2479	78	2480	-	-

5.4 Test Mode

All test mode(s) and condition(s) mentioned were considered and evaluated respectively by performing full tests, the worst data were recorded and reported.

Test mode	Low channel	Middle channel	High channel
Transmitting	2402MHz	2441MHz	2480MHz

5.5 Test Facility

The test facility has a test site registered with the following organizations:

- **IC – Registration No.: 7760A-1**

Waltek Services(Shenzhen) Co., Ltd. has been registered and fully described in a report filed with the Industry Canada. The acceptance letter from the Industry Canada is maintained in our files. Registration 7760A-1, October 15, 2015

- **FCC Test Site 1#– Registration No.: 880581**

Waltek Services(Shenzhen) Co., Ltd. EMC Laboratory `has been registered and fully described in a report filed with the (FCC) Federal Communications Commission. The acceptance letter from the FCC is maintained in our files. Registration 880581, April 29, 2014.

- **FCC Test Site 2#– Registration No.: 328995**

Waltek Services(Shenzhen) Co., Ltd. EMC Laboratory `has been registered and fully described in a report filed with the (FCC) Federal Communications Commission. The acceptance letter from the FCC is maintained in our files. Registration 328995, December 3, 2014.

6 Equipment Used during Test

6.1 Equipments List

3m Semi-anechoic Chamber for Radiation Emissions Test site 1#						
Item	Equipment	Manufacturer	Model No.	Serial No.	Last Calibration Date	Calibration Due Date
1	EMC Analyzer	Agilent	E7405A	MY45114943	Sep.15, 2015	Sep.14, 2016
2	Active Loop Antenna	Beijing Dazhi	ZN30900A	-	Sep.15, 2015	Sep.14, 2016
3	Trilog Broadband Antenna	SCHWARZBECK	VULB9163	336	Apr.19, 2015	Apr.18, 2016
4	Coaxial Cable (below 1GHz)	Top	TYPE16(13M)	-	Sep.15, 2015	Sep.14, 2016
5	Broad-band Horn Antenna	SCHWARZBECK	BBHA 9120 D	667	Apr.19, 2015	Apr.18, 2016
6	Broad-band Horn Antenna	SCHWARZBECK	BBHA 9170	335	Apr.19, 2015	Apr.18, 2016
7	Broadband Preamplifier	COMPLIANCE DIRECTION	PAP-1G18	2004	Mar.17, 2015	Mar.16, 2016
8	Coaxial Cable (above 1GHz)	Top	1GHz-25GHz	EW02014-7	Apr.10, 2015	Apr. 09, 2016
3m Semi-anechoic Chamber for Radiation Emissions Test site 2#						
Item	Equipment	Manufacturer	Model No.	Serial No	Last Calibration Date	Calibration Due Date
1	Test Receiver	R&S	ESCI	101296	Sep.15, 2015	Sep.14, 2016
2	Trilog Broadband Antenna	SCHWARZBECK	VULB9160	9160-3325	Sep.15, 2015	Sep.14, 2016
3	Amplifier	Compliance pirection systems inc	PAP-0203	22024	Sep.15, 2015	Sep.14, 2016
4	Cable	HUBER+SUHNER	CBL2	525178	Sep.15, 2015	Sep.14, 2016
RF Conducted Testing						
Item	Equipment	Manufacturer	Model No.	Serial No.	Last Calibration Date	Calibration Due Date
1.	EMC Analyzer (9k~26.5GHz)	Agilent	E7405A	MY45114943	Sep.15,2015	Sep.14,2016
2.	Spectrum Analyzer (9k-6GHz)	R&S	FSL6	100959	Sep.15,2015	Sep.14,2016
3.	Signal Analyzer (9k~26.5GHz)	Agilent	N9010A	MY50520207	Sep.15,2015	Sep.14,2016

6.2 Measurement Uncertainty

Parameter	Uncertainty
Radio Frequency	$\pm 1 \times 10^{-6}$
RF Power	± 1.0 dB
RF Power Density	± 2.2 dB
Radiated Spurious Emissions test	± 5.03 dB (Bilog antenna 30M~1000MHz)
	± 5.47 dB (Horn antenna 1000M~25000MHz)
Conducted Spurious Emissions test	± 3.64 dB (AC mains 150KHz~30MHz)

6.3 Test Equipment Calibration

All the test equipments used are valid and calibrated by CEPREI Certification Body that address is No.110 Dongguan Zhuang RD. Guangzhou, P.R.China.

7 Radiated Spurious Emissions

Test Requirement: FCC CFR47 Part 15 Section 15.209 & 15.247

Test Method: ANSI C63.10:2013

Test Result: PASS

Measurement Distance: 3m

Limit:

Frequency (MHz)	Field Strength		Field Strength Limit at 3m Measurement Distance	
	uV/m	Distance (m)	uV/m	dBuV/m
0.009 ~ 0.490	$2400/F(\text{kHz})$	300	$10000 * 2400/F(\text{kHz})$	$20\log^{(2400/F(\text{kHz}))} + 80$
0.490 ~ 1.705	$24000/F(\text{kHz})$	30	$100 * 24000/F(\text{kHz})$	$20\log^{(24000/F(\text{kHz}))} + 40$
1.705 ~ 30	30	30	$100 * 30$	$20\log^{(30)} + 40$
30 ~ 88	100	3	100	$20\log^{(100)}$
88 ~ 216	150	3	150	$20\log^{(150)}$
216 ~ 960	200	3	200	$20\log^{(200)}$
Above 960	500	3	500	$20\log^{(500)}$

7.1 EUT Operation

Operating Environment :

Temperature: 23.5 °C

Humidity: 51.1 % RH

Atmospheric Pressure: 101.2kPa

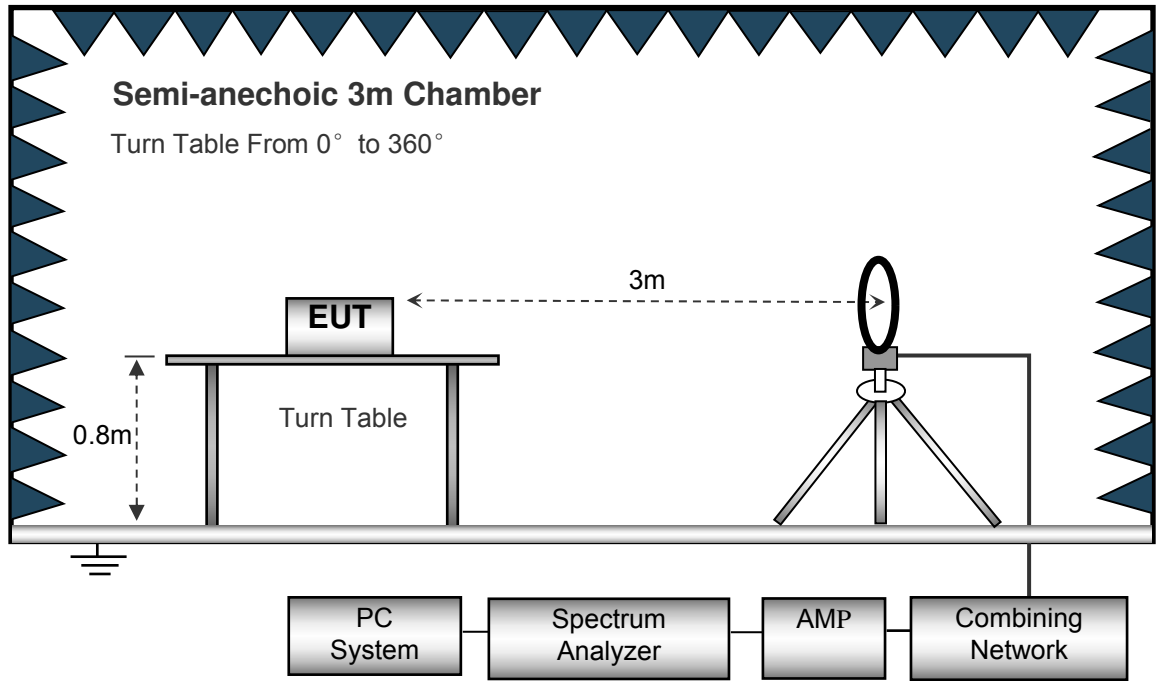
EUT Operation :

The test was performed in transmitting mode, the test data were shown in the report.

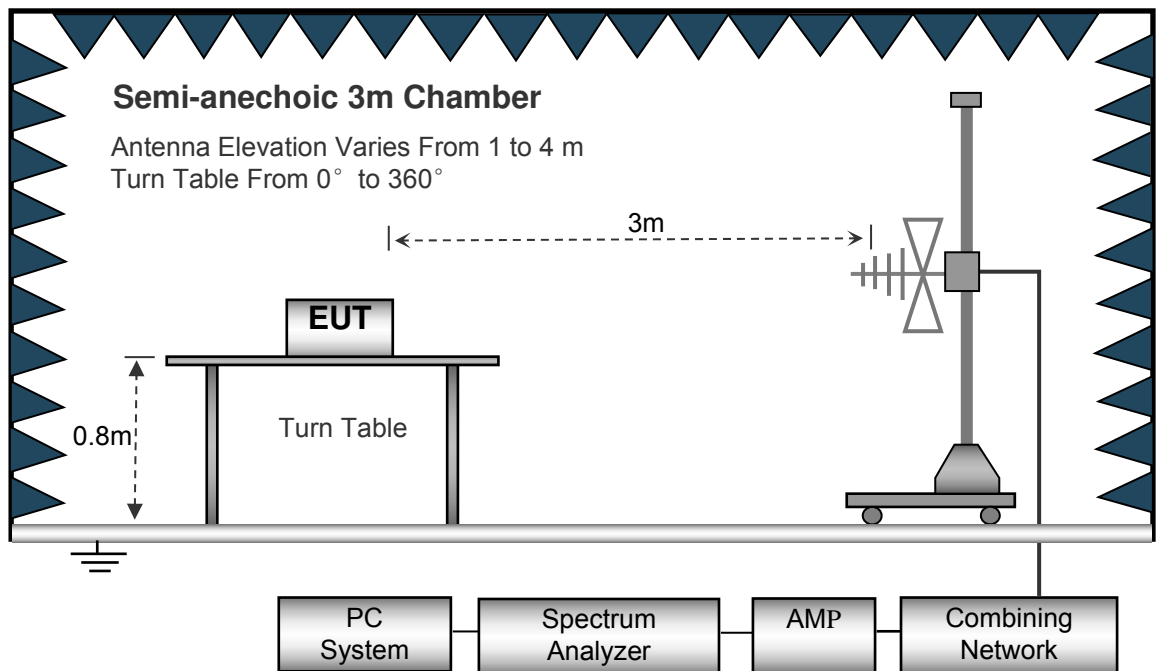
7.2 Test Setup

The radiated emission tests were performed in the 3m Semi- Anechoic Chamber test site, using the setup accordance with the ANSI C63.10:2013.

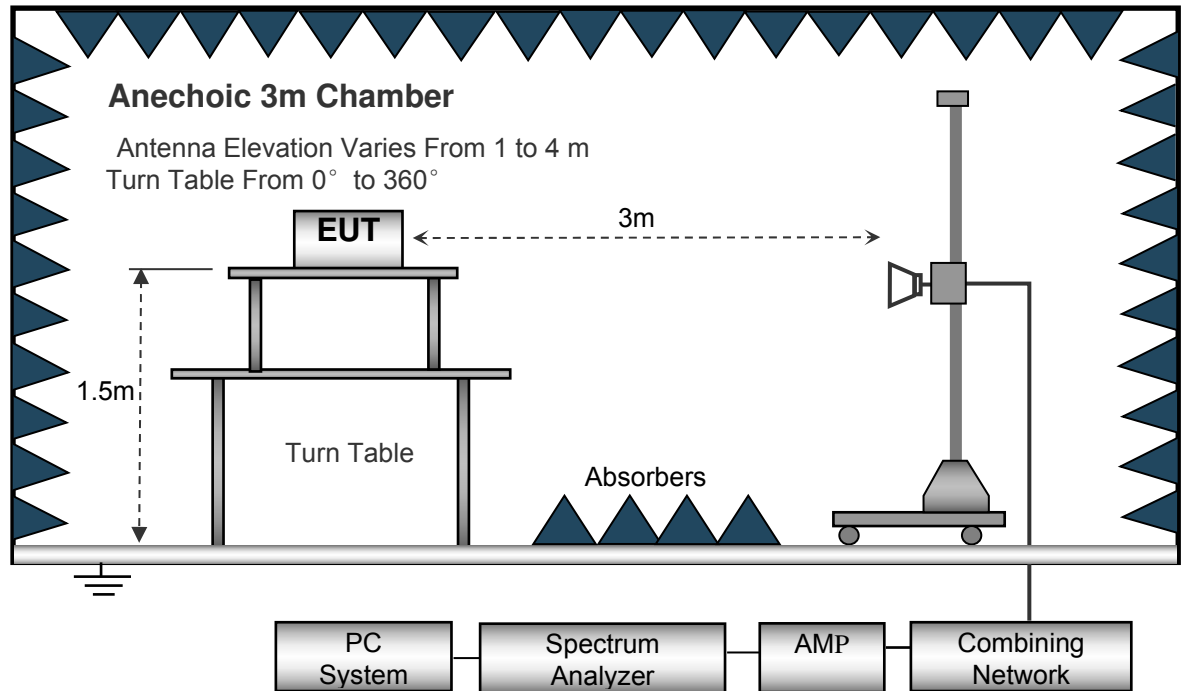
The test setup for emission measurement below 30MHz.



The test setup for emission measurement from 30 MHz to 1 GHz.



The test setup for emission measurement above 1 GHz.



7.3 Spectrum Analyzer Setup

Below 30MHz

Sweep Speed..... Auto
 IF Bandwidth..... 10kHz
 Video Bandwidth..... 10kHz
 Resolution Bandwidth..... 10kHz

30MHz ~ 1GHz

Sweep Speed..... Auto
 Detector..... PK
 Resolution Bandwidth..... 100kHz
 Video Bandwidth..... 300kHz

Above 1GHz

Sweep Speed..... Auto
 Detector..... PK
 Resolution Bandwidth..... 1MHz
 Video Bandwidth..... 3MHz
 Detector..... Ave.
 Resolution Bandwidth..... 1MHz
 Video Bandwidth..... 10Hz

7.4 Test Procedure

1. The EUT is placed on a turntable, which is above ground plane.
2. The turntable shall be rotated for 360 degrees to determine the position of maximum emission level.
3. EUT is set 3m away from the receiving antenna, which is moved from 1m to 4m to find out the maximum emissions. The spectrum was investigated from the lowest radio frequency signal generated in the device, without going below 9 kHz, up to the tenth harmonic of the highest fundamental frequency or to 40 GHz, whichever is lower.
4. Maximum procedure was performed on the six highest emissions to ensure EUT compliance.
5. And also, each emission was to be maximized by changing the polarization of receiving antenna both horizontal and vertical.
6. Repeat above procedures until the measurements for all frequencies are complete.
7. The radiation measurements are tested under 3-axes(X,Y,Z) position(X denotes lying on the table, Y denotes side stand and Z denotes vertical stand), After pre-test, It was found that the worse radiation emission was get at the X position. So the data shown was the X position only.

7.5 Summary of Test Results

Test Frequency: 32.768KHz to 30MHz

The measurements were more than 20 dB below the limit and not reported.

Test Frequency: 30MHz ~ 18GHz

Frequency	Receiver Reading	Detector	Turn table Angle	RX Antenna		Corrected Factor	Corrected Amplitude	Limit	Margin
				Height	Polar				
(MHz)	(dB μ V)	(PK/QP/Ave)	Degree	(m)	(H/V)	(dB)	(dB μ V/m)	(dB μ V/m)	(dB)
GFSK Low Channel									
234.55	36.23	QP	189	1.8	H	-13.35	22.88	46.00	-23.12
234.55	41.98	QP	35	1.1	V	-13.35	28.63	46.00	-17.37
4804.00	46.23	PK	329	1.9	V	-1.06	45.17	74.00	-28.83
4804.00	43.25	Ave	329	1.9	V	-1.06	42.19	54.00	-11.81
7206.00	40.21	PK	203	1.1	H	1.33	41.54	74.00	-32.46
7206.00	35.09	Ave	203	1.1	H	1.33	36.42	54.00	-17.58
2341.87	46.90	PK	21	1.1	V	-13.19	33.71	74.00	-40.29
2341.87	38.83	Ave	21	1.1	V	-13.19	25.64	54.00	-28.36
2388.10	44.52	PK	327	1.3	H	-13.14	31.38	74.00	-42.62
2388.10	37.72	Ave	327	1.3	H	-13.14	24.58	54.00	-29.42
2494.54	42.56	PK	86	1.7	V	-13.08	29.48	74.00	-44.52
2494.54	36.59	Ave	86	1.7	V	-13.08	23.51	54.00	-30.49

Frequency	Receiver Reading	Detector	Turn table Angle	RX Antenna		Corrected Factor	Corrected Amplitude	Limit	Margin
				Height	Polar				
(MHz)	(dB μ V)	(PK/QP/Ave)	Degree	(m)	(H/V)	(dB)	(dB μ V/m)	(dB μ V/m)	(dB)
GFSK Middle Channel									
234.55	34.76	QP	323	2.0	H	-13.35	21.41	46.00	-24.59
234.55	41.66	QP	121	1.0	V	-13.35	28.31	46.00	-17.69
4882.00	44.88	PK	320	1.7	V	-0.62	44.26	74.00	-29.74
4882.00	44.14	Ave	320	1.7	V	-0.62	43.52	54.00	-10.48
7323.00	39.21	PK	62	1.4	H	2.21	41.42	74.00	-32.58
7323.00	35.01	Ave	62	1.4	H	2.21	37.22	54.00	-16.78
2328.93	46.68	PK	280	1.5	V	-13.19	33.49	74.00	-40.51
2328.93	39.47	Ave	280	1.5	V	-13.19	26.28	54.00	-27.72
2351.41	44.26	PK	303	1.7	H	-13.14	31.12	74.00	-42.88
2351.41	36.30	Ave	303	1.7	H	-13.14	23.16	54.00	-30.84
2496.95	43.94	PK	275	1.9	V	-13.08	30.86	74.00	-43.14
2496.95	38.62	Ave	275	1.9	V	-13.08	25.54	54.00	-28.46

Frequency	Receiver Reading	Detector	Turn table Angle	RX Antenna		Corrected Factor	Corrected Amplitude	Limit	Margin
				Height	Polar				
(MHz)	(dB μ V)	(PK/QP/Ave)	Degree	(m)	(H/V)	(dB)	(dB μ V/m)	(dB μ V/m)	(dB)
GFSK High Channel									
234.55	34.24	QP	353	1.1	H	-13.35	20.89	46.00	-25.11
234.55	41.59	QP	28	1.9	V	-13.35	28.24	46.00	-17.76
4960.00	43.54	PK	46	1.7	V	-0.24	43.30	74.00	-30.70
4960.00	44.69	Ave	46	1.7	V	-0.24	44.45	54.00	-9.55
7440.00	39.45	PK	358	1.6	H	2.84	42.29	74.00	-31.71
7440.00	35.39	Ave	358	1.6	H	2.84	38.23	54.00	-15.77
2311.72	46.81	PK	92	1.5	V	-13.19	33.62	74.00	-40.38
2311.72	37.75	Ave	92	1.5	V	-13.19	24.56	54.00	-29.44
2363.48	43.89	PK	56	1.5	H	-13.14	30.75	74.00	-43.25
2363.48	38.46	Ave	56	1.5	H	-13.14	25.32	54.00	-28.68
2491.09	42.47	PK	309	1.8	V	-13.08	29.39	74.00	-44.61
2491.09	36.80	Ave	309	1.8	V	-13.08	23.72	54.00	-30.28

Test Frequency : 18GHz to 25GHz

The measurements were more than 20 dB below the limit and not reported

8 Band Edge Measurement

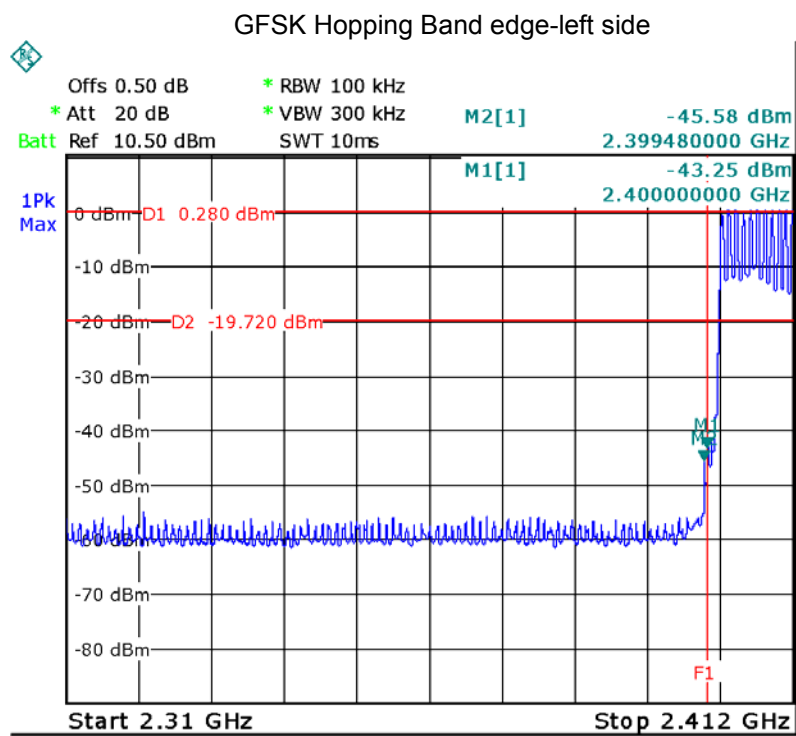
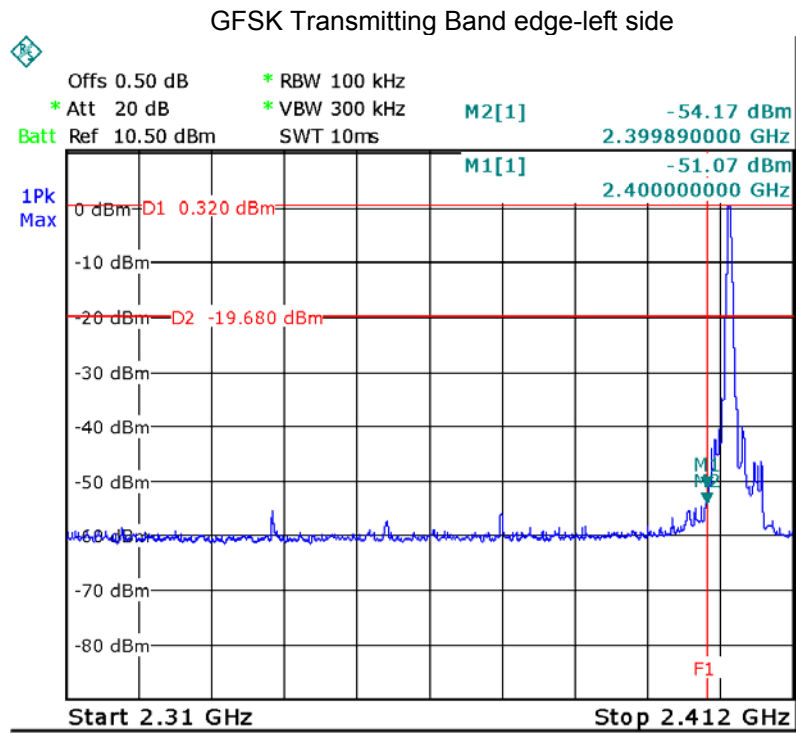
Test Requirement:	Section 15.247(d) In addition, radiated emissions which fall in the restricted bands, as defined in Section 15.205(a), must also comply with the radiated emission limits specified in Section 15.209(a) (see Section 15.205(c)).
Test Method:	ANSI C63.10:2013
Test Limit:	Regulation 15.247 (d), In any 100 kHz bandwidth outside the frequency band in which the spread spectrum or digitally modulated intentional radiator is operating, the radio frequency power that is produced by the intentional radiator shall be at least 20 dB below that in the 100 kHz bandwidth within the band that contains the highest level of the desired power, based on either an RF conducted or a radiated measurement, provided the transmitter demonstrates compliance with the peak conducted power limits. If the transmitter complies with the conducted power limits based on the use of RMS averaging over a time interval, as permitted under paragraph (b)(3) of this section, the attenuation required under this paragraph shall be 30 dB instead of 20 dB. Attenuation below the general limits specified in §15.209(a) is not required. In addition, radiated emissions which fall in the restricted bands, as defined in §15.205(a), must also comply with the radiated emission limits specified in §15.209(a) (see §15.205(c)).
Test Mode:	Transmitting and Hopping

8.1 Test Procedure

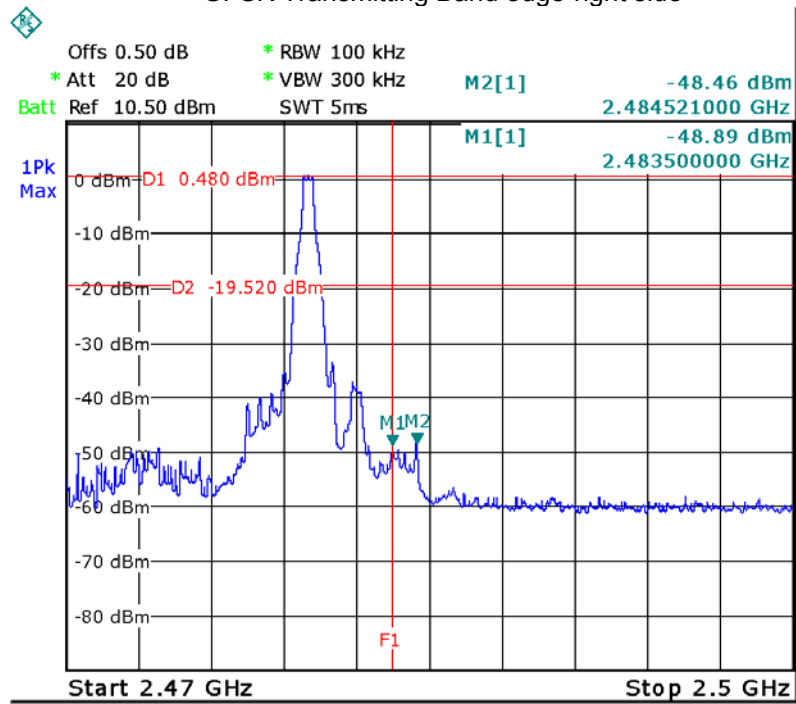
1. Remove the antenna from the EUT and then connect a low RF cable from the antenna port to the spectrum;
2. Set the spectrum analyzer: RBW = 100kHz, VBW = 300kHz, Sweep = auto
Detector function = peak, Trace = max hold

8.2 Test Result

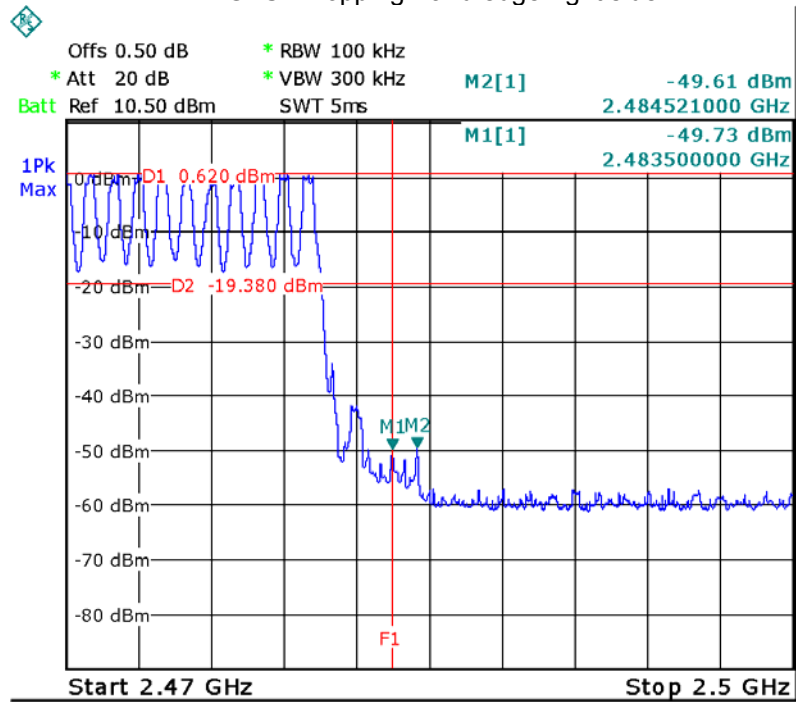
Test plots



GFSK Transmitting Band edge-right side



GFSK Hopping Band edge-right side



9 Bandwidth Measurement

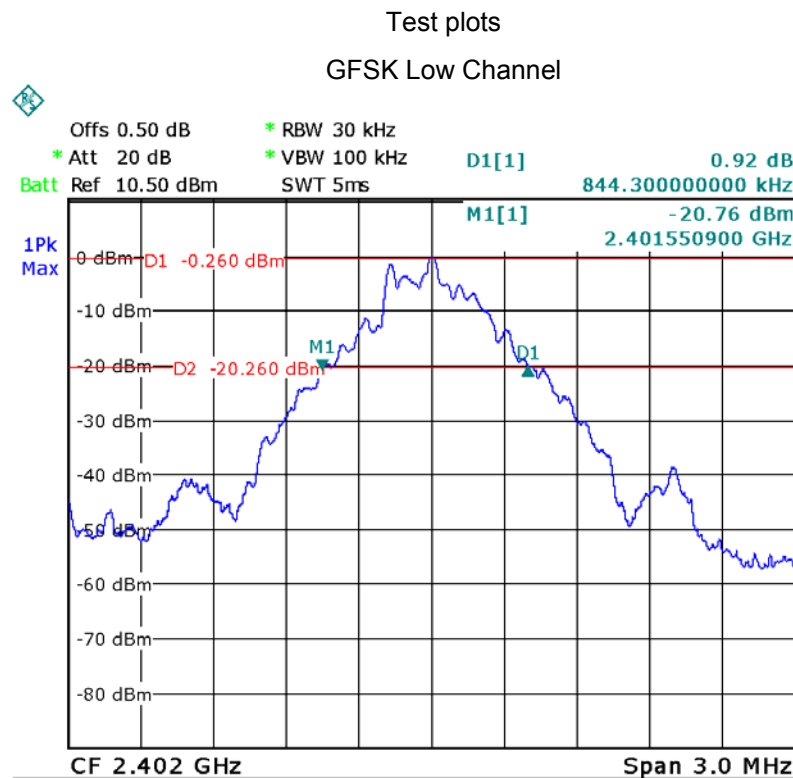
Test Requirement:	FCC CFR47 Part 15 Section 15.247
Test Method:	ANSI C63.10:2013
Test Mode:	Test in fixing operating frequency at low, Middle, high channel.

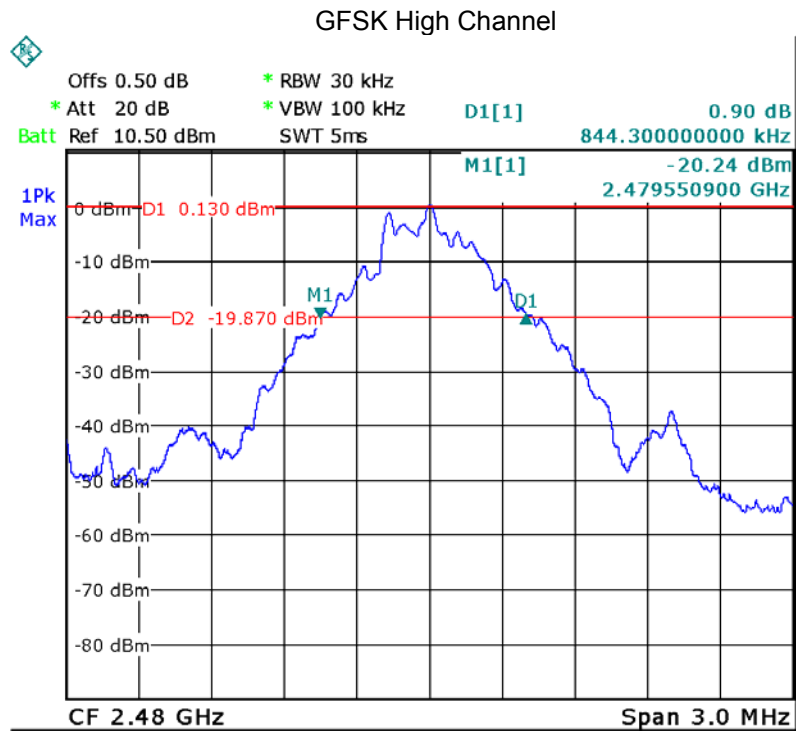
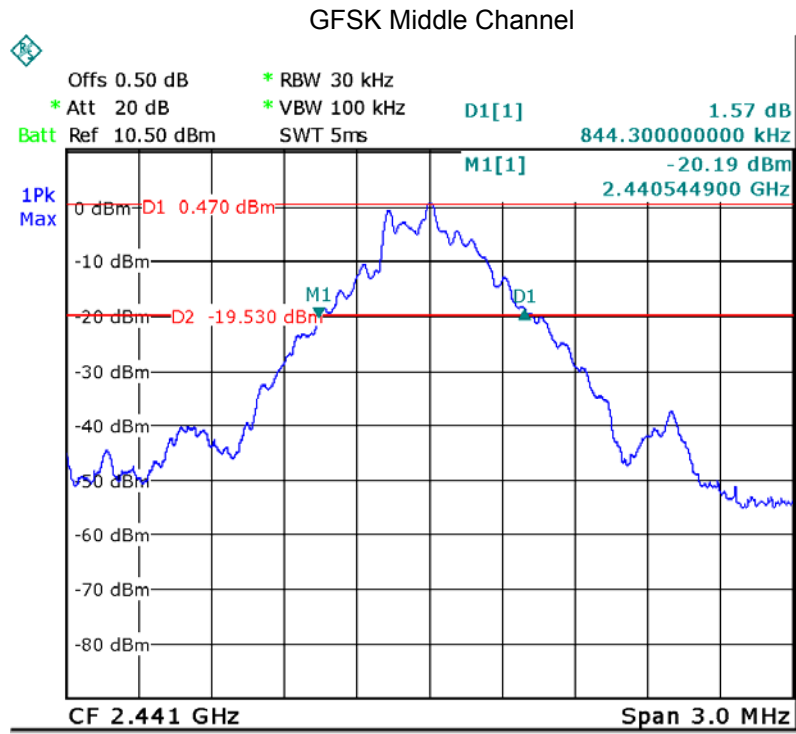
9.1 Test Procedure

1. Remove the antenna from the EUT and then connect a low RF cable from the antenna port to the spectrum;
2. Set the spectrum analyzer: RBW = 30kHz, VBW = 100kHz

9.2 Test Result

Modulation	Test Channel	20 dB Bandwidth
GFSK	Low	0.844MHz
GFSK	Middle	0.844MHz
GFSK	High	0.844MHz





10 Maximum Peak Output Power

Test Requirement:	FCC CFR47 Part 15 Section 15.247
Test Method:	ANSI C63.10:2013
Test Limit:	Regulation 15.247 (b)(1), For frequency hopping systems operating in the 2400-2483.5 MHz band employing at least 75 non-overlapping hopping channels, and all frequency hopping systems in the 5725-5850 MHz band: 1 watt. For all other frequency hopping systems in the 2400-2483.5 MHz band: 0.125 watts. Refer to the result "Number of Hopping Frequency" of this document. The 0.125watts (20.97 dBm) limit applies.
Test mode:	Test in fixing frequency transmitting mode.

10.1 Test Procedure

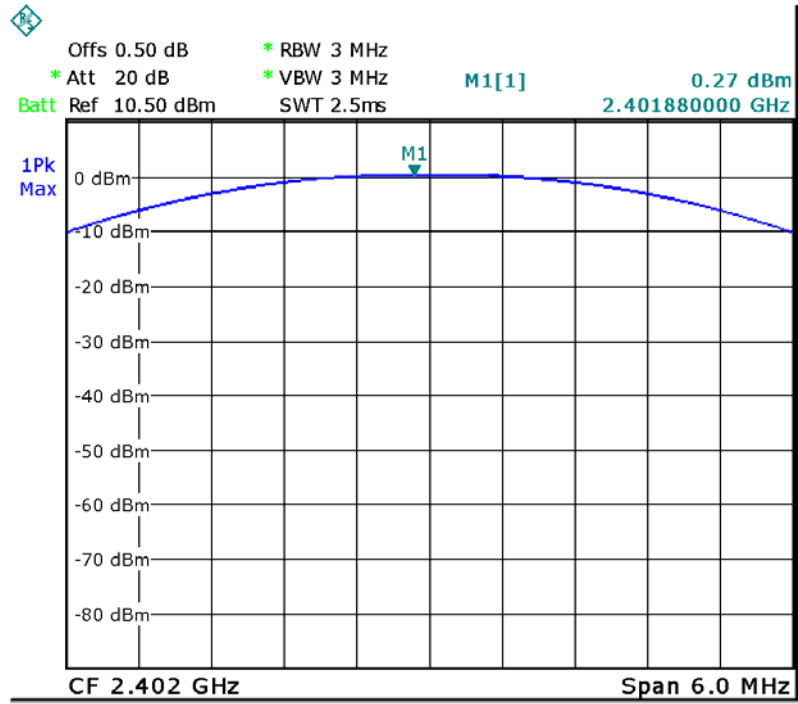
1. Remove the antenna from the EUT and then connect a low RF cable from the antenna port to the spectrum.
2. Set the spectrum analyzer: RBW = 3 MHz. VBW =3 MHz. Sweep = auto; Detector Function = Peak.
3. Keep the EUT in transmitting at lowest, medium and highest channel individually. Record the max value.

10.2 Test Result

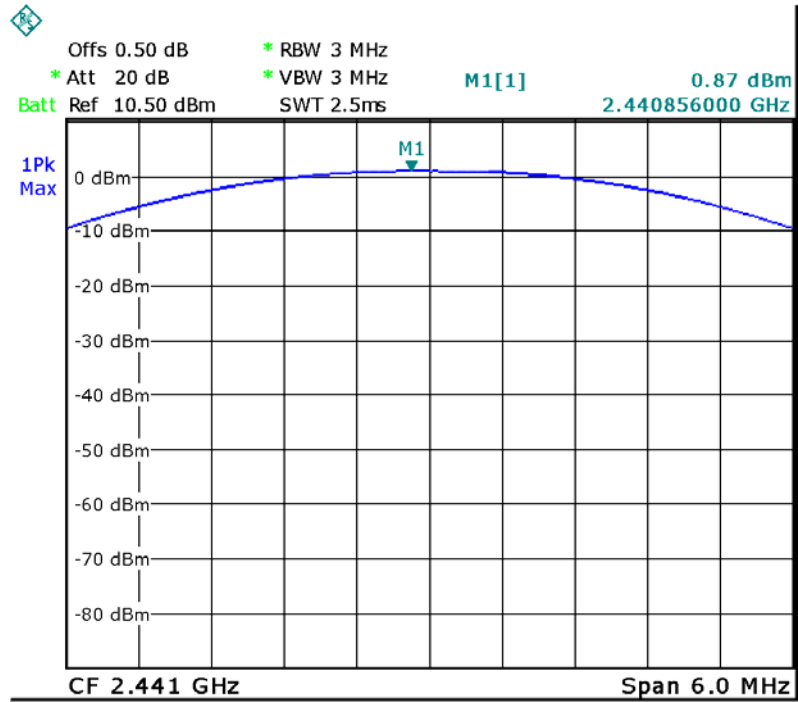
Test Mode	Data Rate	Peak Power(dBm)			Limit (dBm)
		CH00	CH39	CH78	
GFSK	1Mbps	0.27	0.87	0.57	20.97

Test plots

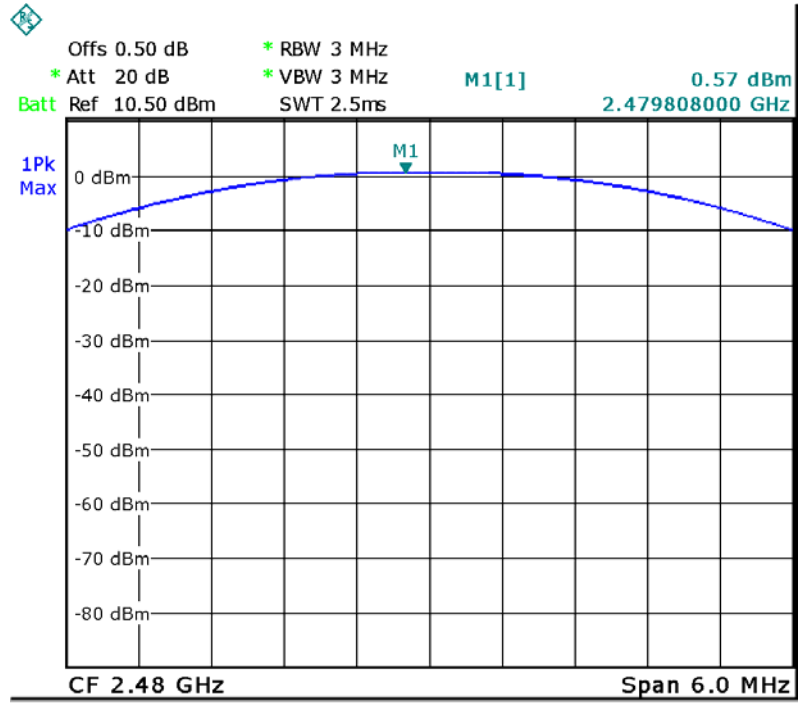
GFSK Low Channel



GFSK Channel



GFSK High Channel



11 Hopping Channel Separation

Test Requirement:	FCC CFR47 Part 15 Section 15.247
Test Method:	ANSI C63.10:2013
Test Limit:	Regulation 15.247(a)(1) Frequency hopping systems shall have hopping channel carrier frequencies separated by a minimum of 25 kHz or the 20 dB bandwidth of the hopping channel, whichever is greater. Alternatively, frequency hopping systems operating in the 2400-2483.5MHz band may have hopping channel carrier frequencies that are separated by 25 kHz or two-thirds of the 20 dB bandwidth of the hopping channel, whichever is greater, provided the systems operate with an output power no greater than 1W.
Test Mode:	Test in hopping transmitting operating mode.

11.1 Test Procedure

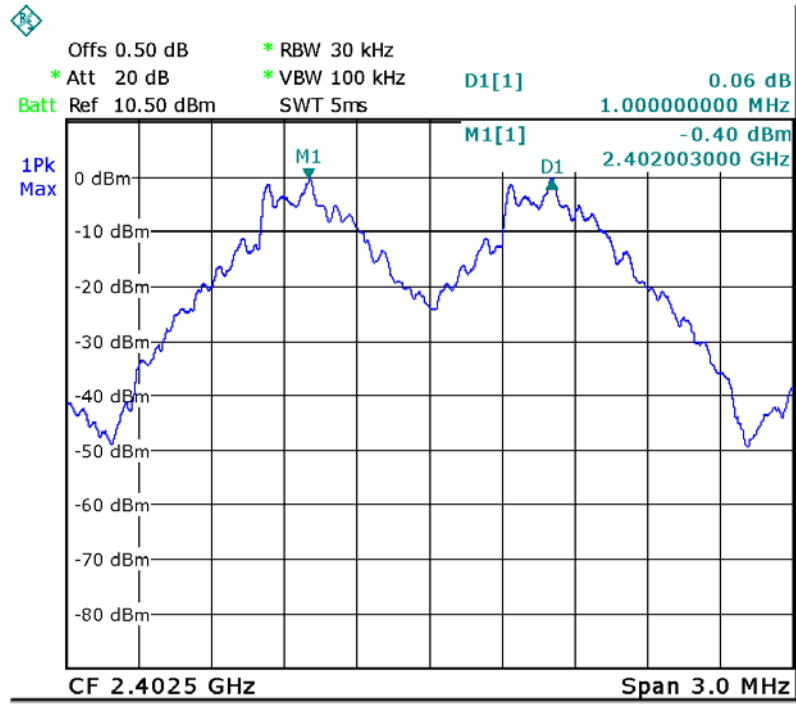
1. Remove the antenna from the EUT and then connect a low RF cable from the antenna port to the spectrum.
2. Set the spectrum analyzer: RBW = 30KHz. VBW = 100KHz , Span = 3MHz. Sweep = auto; Detector Function = Peak. Trace = Max hold.
3. Allow the trace to stabilize. Use the marker-delta function to determine the separation between the peaks of the adjacent channels. The limit is specified in one of the subparagraphs of this Section Submit this plot.

11.2 Test Result

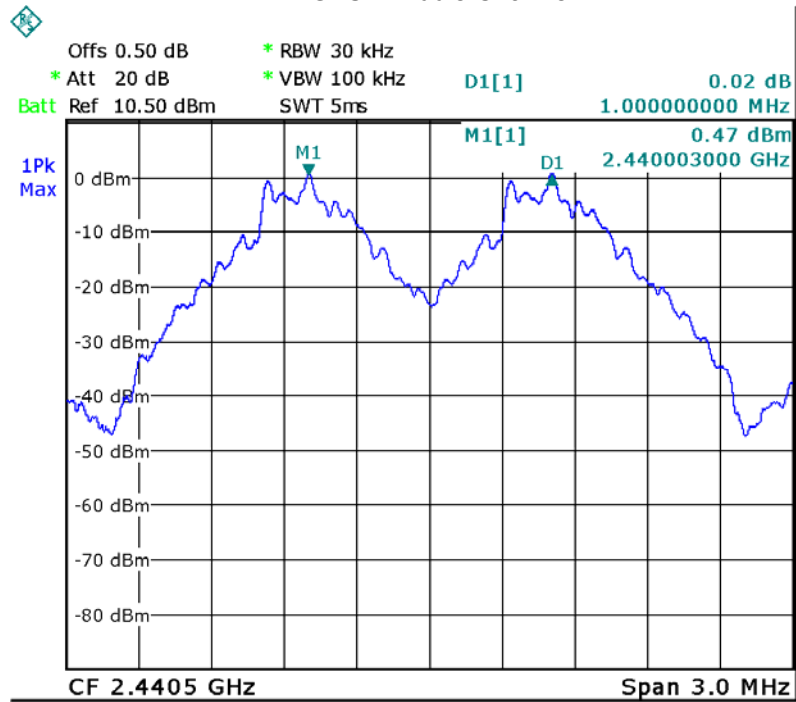
Modulation	Test Channel	Separation (MHz)	Result
GFSK	Low	1 MHz	PASS
GFSK	Middle	1 MHz	PASS
GFSK	High	1 MHz	PASS

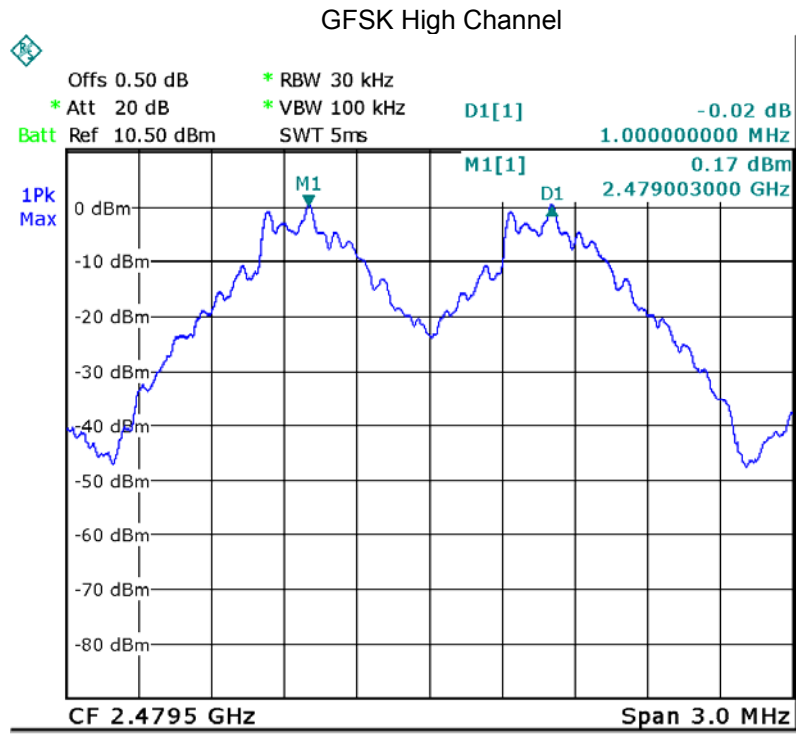
Test plots

GFSK Low Channel



GFSK Middle Channel





12 Number of Hopping Frequency

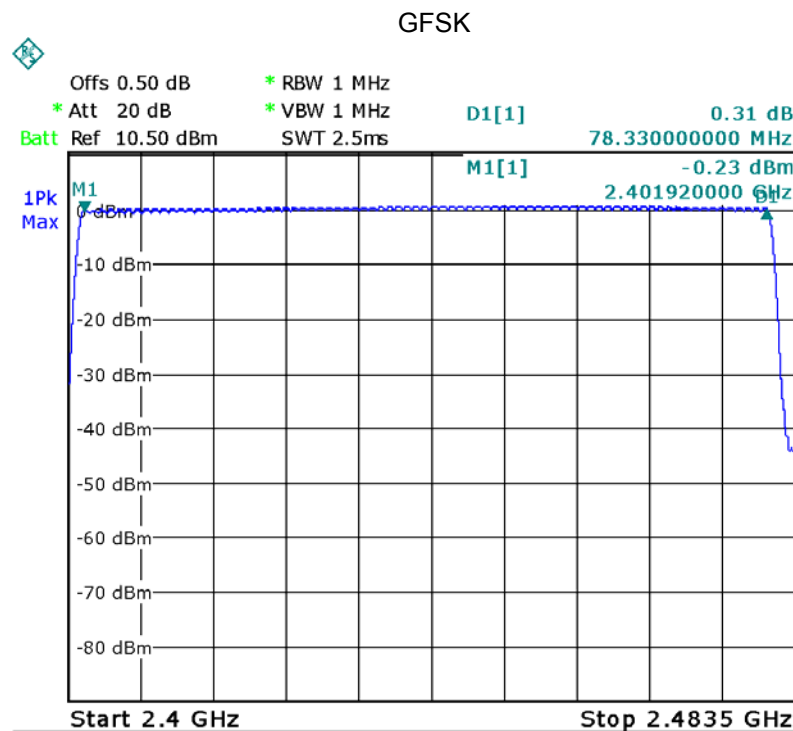
Test Requirement:	FCC CFR47 Part 15 Section 15.247
Test Method:	ANSI C63.10:2013
Test Limit:	Regulation 15.247 (a)(1)(iii) Frequency hopping systems in the 2400-2483.5 MHz band shall use at least 15 channels.
Test Mode:	Test in hopping transmitting operating mode.

12.1 Test Procedure

1. Remove the antenna from the EUT and then connect a low RF cable from the antenna port to the spectrum.
2. Set the spectrum analyzer: RBW = 1MHz. VBW = 1MHz. Sweep = auto; Detector Function = Peak. Trace = Max hold.
3. Allow the trace to stabilize. It may prove necessary to break the span up to sections. in order to clearly show all of the hopping frequencies. The limit is specified in one of the subparagraphs of this Section.
4. Set the spectrum analyzer: Start Frequency = 2.4GHz, Stop Frequency = 2.4835GHz. Sweep=auto;

12.2 Test Result

Test Plots: 79 Channels in total



13 Dwell Time

Test Requirement:	FCC CFR47 Part 15 Section 15.247
Test Method:	ANSI C63.10:2013
Test Limit:	Regulation 15.247(a)(1)(iii) Frequency hopping systems in the 2400-2483.5 MHz band shall use at least 15 channels. The average time of occupancy on any channel shall not be greater than 0.4 seconds within a period of 0.4 seconds multiplied by the number of hopping channels employed. Frequency hopping systems may avoid or suppress transmissions on a particular hopping frequency provided that a minimum of 15 channels are used.
Test Mode:	Test in hopping transmitting operating mode.

13.1 Test Procedure

1. Remove the antenna from the EUT and then connect a low RF cable from the antenna port to the spectrum.
2. Set spectrum analyzer span = 0. Centred on a hopping channel;
3. Set RBW = 1MHz and VBW = 3MHz. Sweep = as necessary to capture the entire dwell time per hopping channel. Set the EUT for DH5, DH3 and DH1 packet transmitting.
4. Use the marker-delta function to determine the dwell time. If this value varies with different modes of operation (e.g.. data rate. modulation format. etc.). repeat this test for each variation. The limit is specified in one of the subparagraphs of this Section. Submit this plot(s).

13.2 Test Result

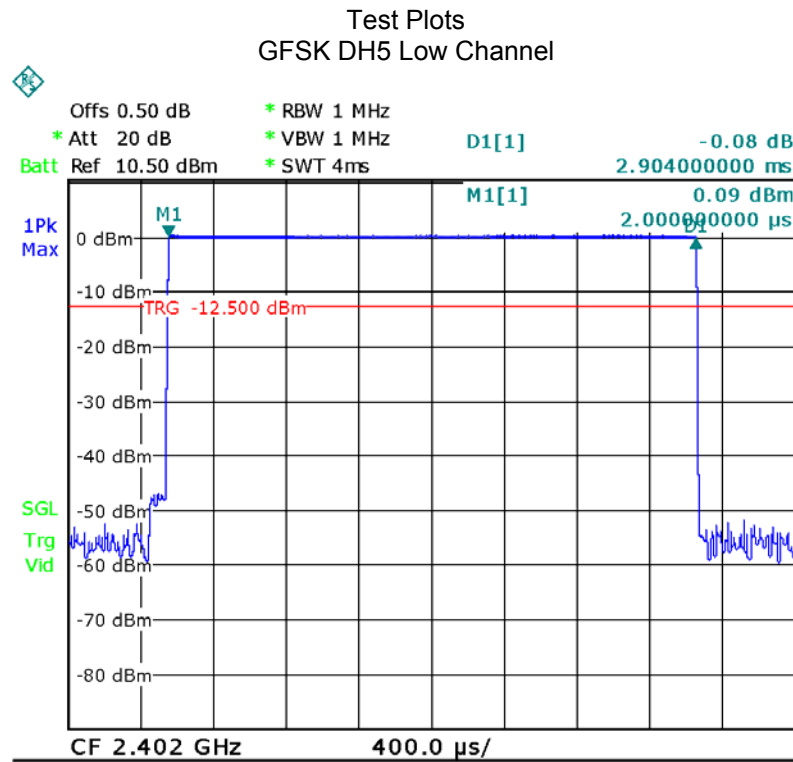
DH5 Packet permit maximum $1600 / 79 / 6$ hops per second in each channel (5 time slots RX, 1 time slot TX).

DH3 Packet permit maximum $1600 / 79 / 4$ hops per second in each channel (3 time slots RX, 1 time slot TX).

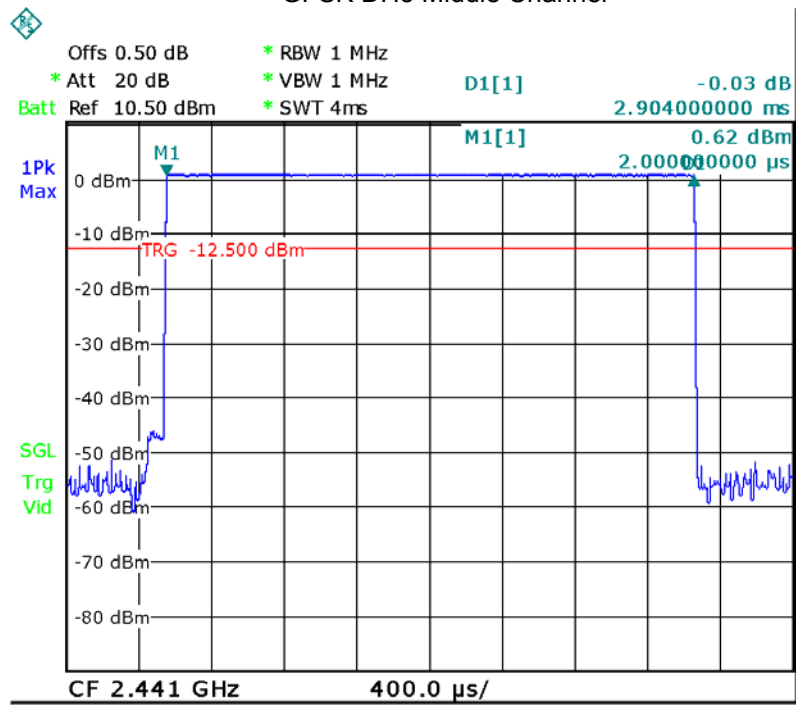
DH1 Packet permit maximum $1600 / 79 / 2$ hops per second in each channel (1 time slot RX, 1 time slot TX). So, the Dwell Time can be calculated as follows:

Data Packet	Dwell Time(s)
DH5	$1600/79/6*0.4*79*(MkrDelta)/1000$
DH3	$1600/79/4*0.4*79*(MkrDelta)/1000$
DH1	$1600/79/2*0.4*79*(MkrDelta)/1000$
Remark: Mkr Delta is once pulse time. Only the worst data(DH5) were show as follow.	

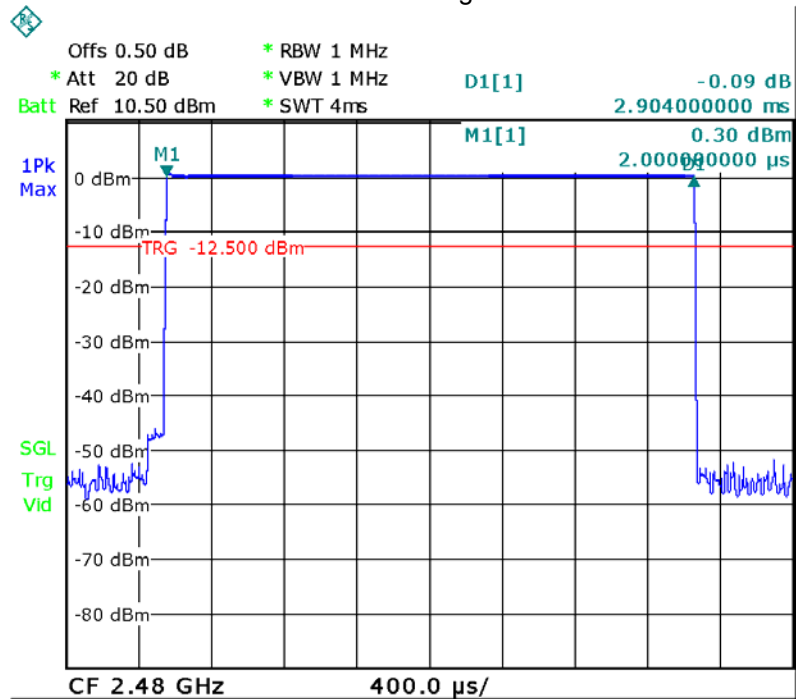
Modulation	Data Packet	Channel	pulse time(ms)	Dwell Time(s)	Limits(s)
GFSK	DH5	Low	2.904	0.310	0.4
		middle	2.904	0.310	0.4
		High	2.904	0.310	0.4



GFSK DH5 Middle Channel



GFSK DH5 High Channel



14 Antenna Requirement

According to the FCC Part 15 Paragraph 15.203, an intentional radiator shall be designed to ensure that no antenna other than that furnished by the responsible party shall be used with the device. This product has a PCB printed antenna, fulfil the requirement of this section.

15 RF Exposure

Test Requirement: FCC Part 1.1307

Evaluation Method: FCC Part 2.1091

15.1 Requirements

Systems operating under the provisions of this section shall be operated in a manner that ensures that the public is not exposed to radio frequency energy levels in excess limit for maximum permissible exposure. In accordance with 47 CFR FCC Part 2 Subpart J, section 2.1091 this device has been defined as a mobile device whereby a distance of 0.2 m normally can be maintained between the user and the device.

15.2 The procedures / limit

(A) Limits for Occupational / Controlled Exposure

Frequency Range (MHz)	Electric Field Strength (E) (V/m)	Magnetic Field Strength (H) (A/m)	Power Density (S) (mW/ cm ²)	Averaging Time E ² , H ² or S (minutes)
0.3-3.0	614	1.63	(100)*	6
3.0-30	1842 / f	4.89 / f	(900 / f)*	6
30-300	61.4	0.163	1.0	6
300-1500			F/300	6
1500-100,000			5	6

(B) Limits for General Population / Uncontrolled Exposure

Frequency Range (MHz)	Electric Field Strength (E) (V/m)	Magnetic Field Strength (H) (A/m)	Power Density (S) (mW/ cm ²)	Averaging Time E ² , H ² or S (minutes)
0.3-1.34	614	1.63	(100)*	30
1.34-30	824/f	2.19/f	(180/f)*	30
30-300	27.5	0.073	0.2	30
300-1500			F/1500	30
1500-100,000			1.0	30

Note: f = frequency in MHz ; *Plane-wave equivalent power density

15.3 MPE Calculation Method

$$E \text{ (V/m)} = \frac{\sqrt{30 \times P \times G}}{d} \quad \text{Power Density: } Pd \text{ (W/m}^2\text{)} = \frac{E^2}{377}$$

E = Electric field (V/m)

P = Peak RF output power (W)

G = EUT Antenna numeric gain (numeric)

d = Separation distance between radiator and human body (m)

The formula can be changed to

$$Pd = \frac{30 \times P \times G}{377 \times d^2}$$

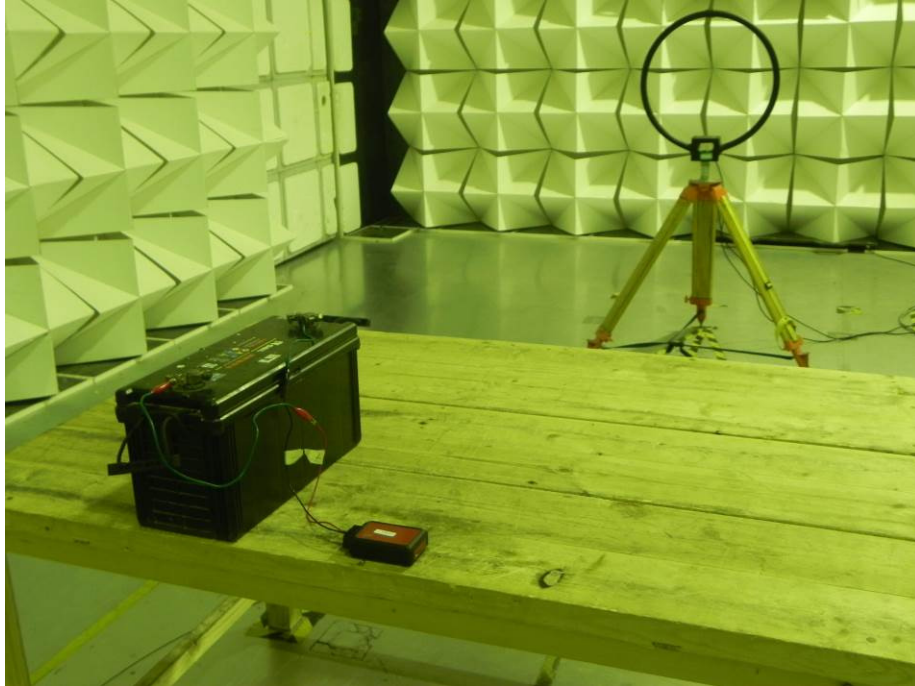
From the peak EUT RF output power, the minimum mobile separation distance, d=0.2m, as well as the gain of the used antenna, the RF power density can be obtained

Antenna Gain (numeric)	Max. Peak Output Power (dBm)	Peak Output Power (mW)	Power Density (mW/cm ²)	Limit of Power Density (mW/cm ²)
1.00	0.87	1.222	0.000243	1

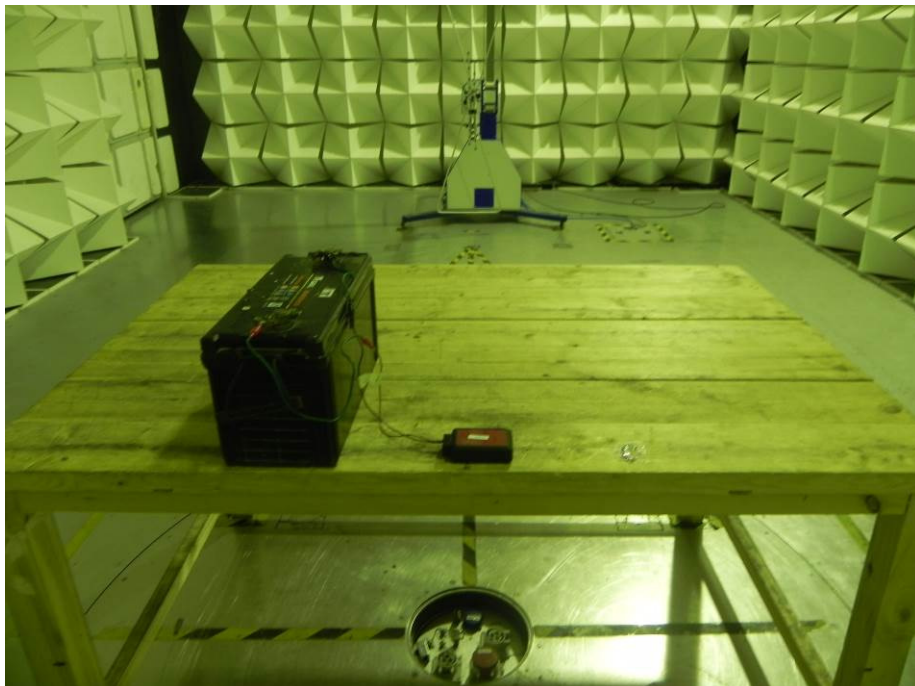
16 Photographs – Model DS201 Test Setup

16.1 Photograph - Radiation Spurious Emission Test Setup

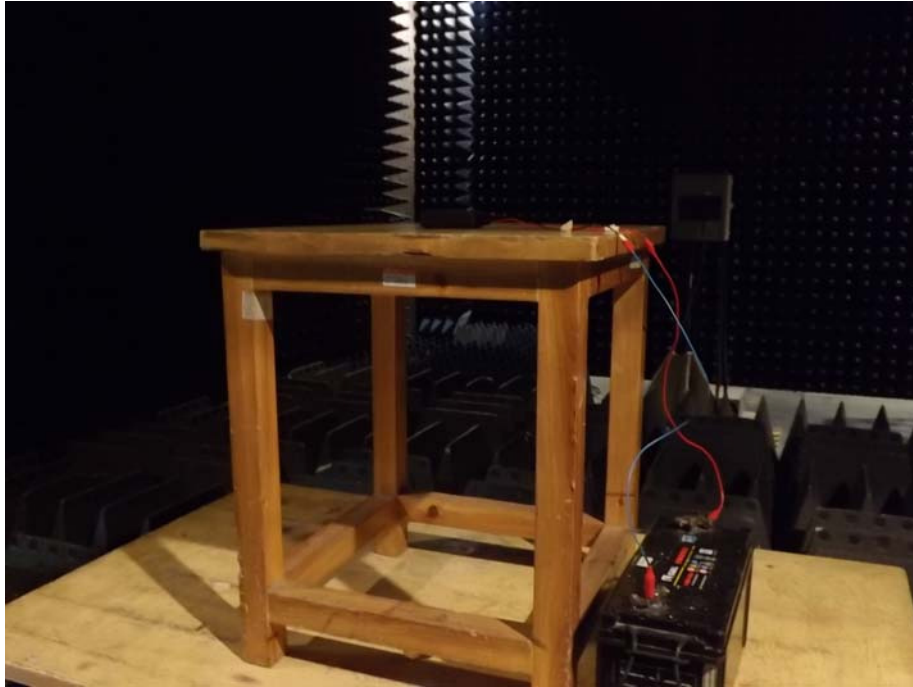
32.768KHz to 30MHz at Test Site 2#



30MHz-1GHz at Test Site 2#



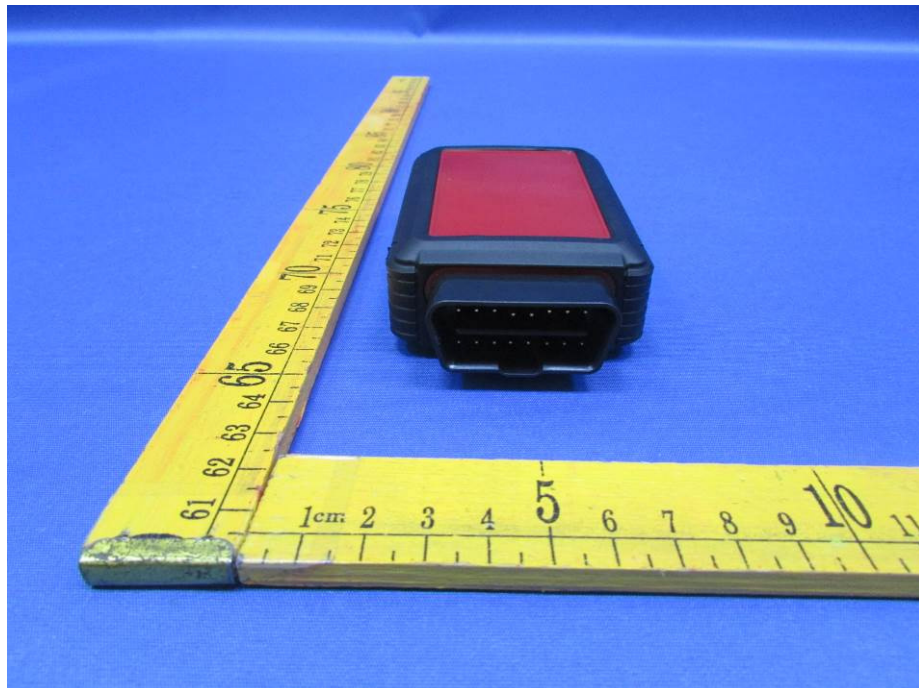
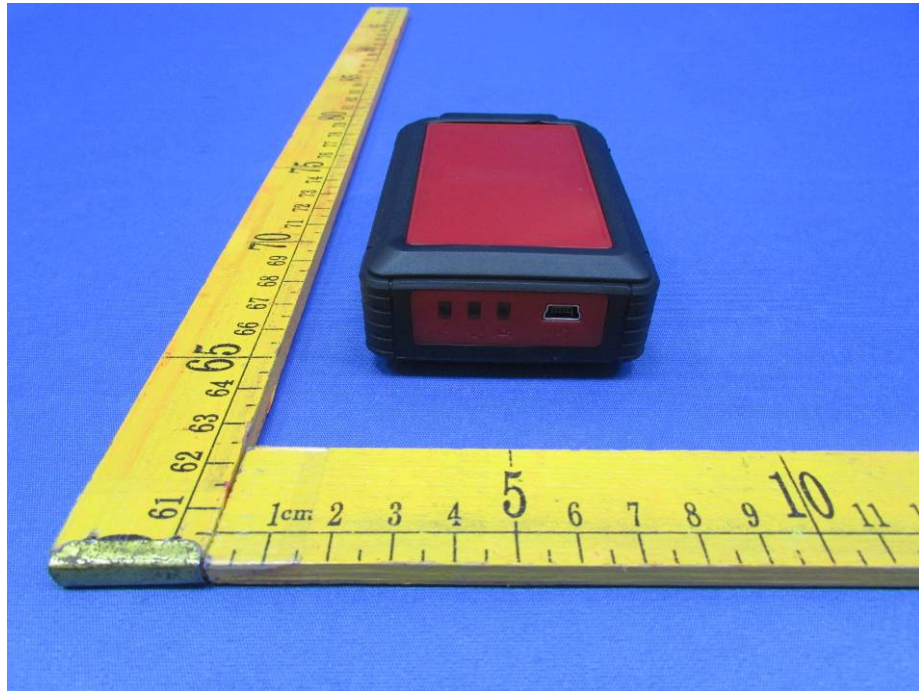
1GHz to 25GHz at Test Site 1#

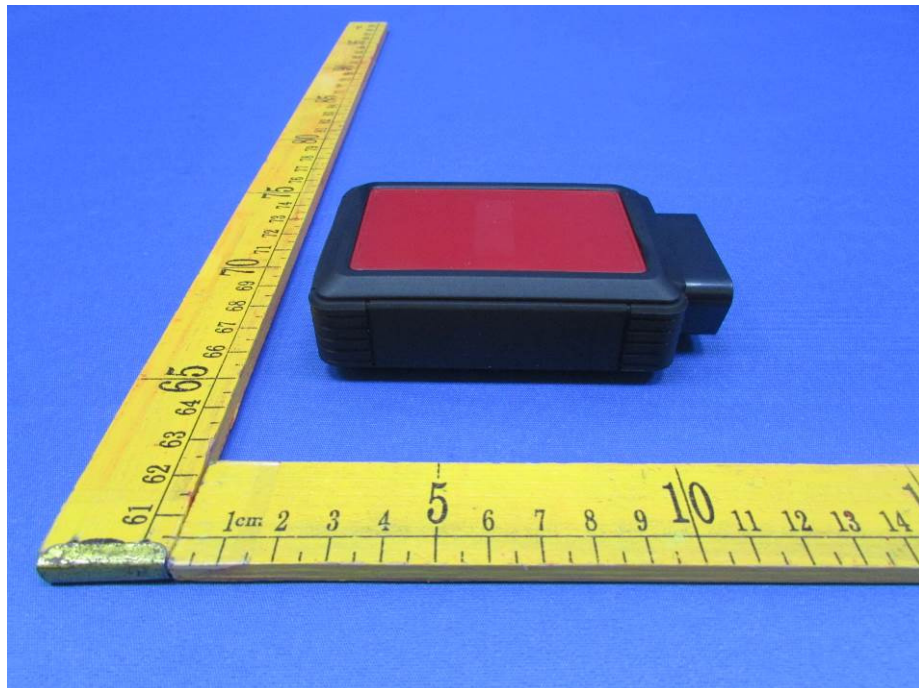
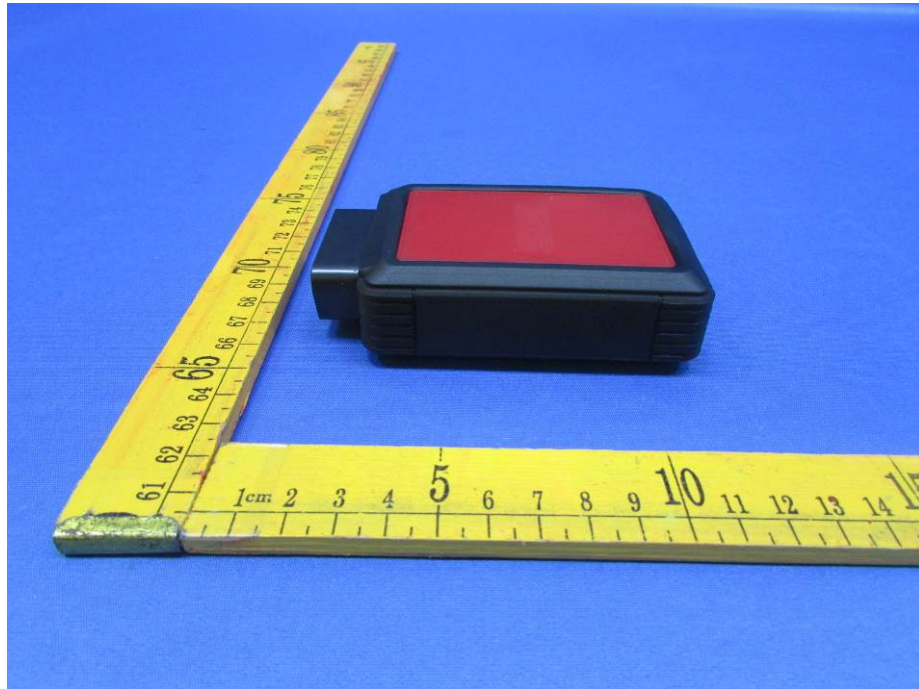


17 Photographs - Constructional Details

17.1 Model DS201 -External Photos

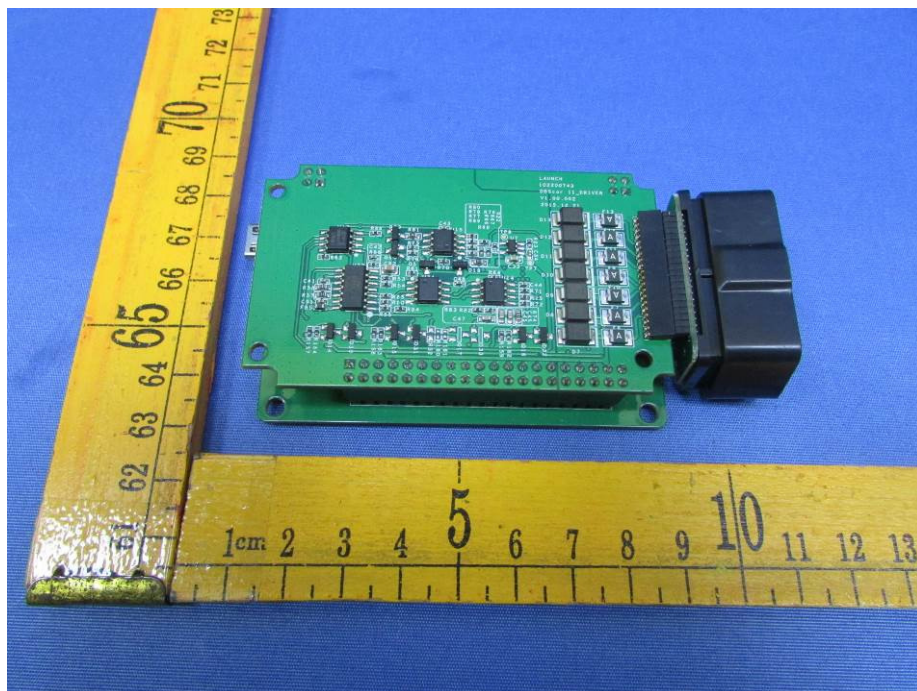
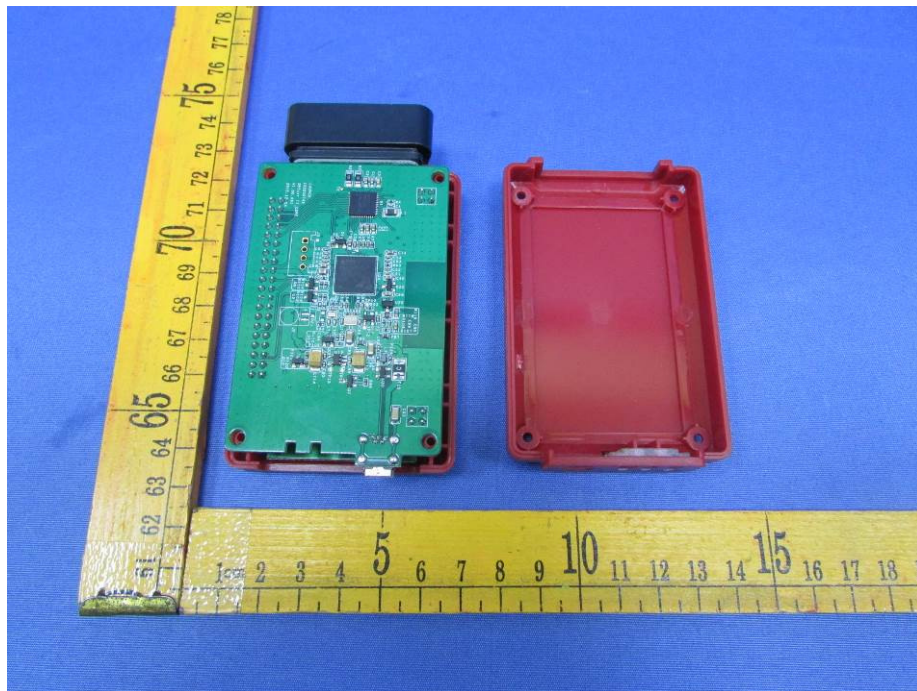


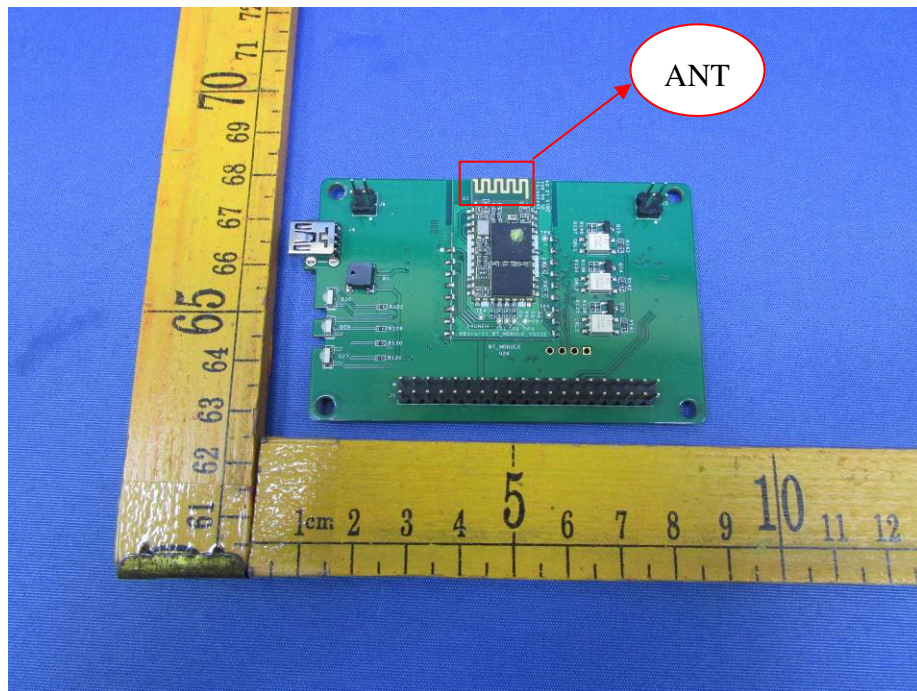
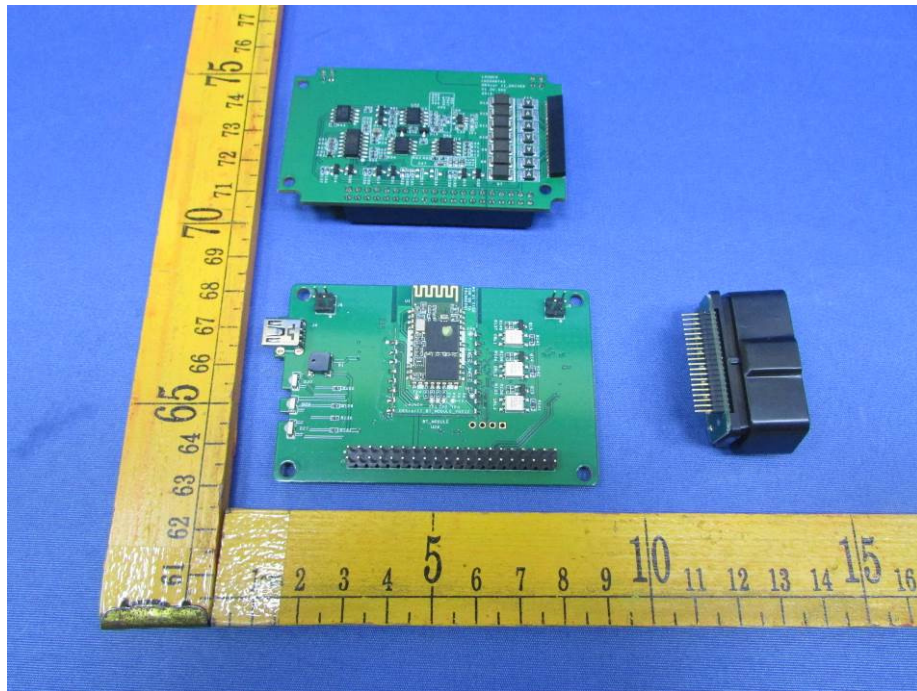


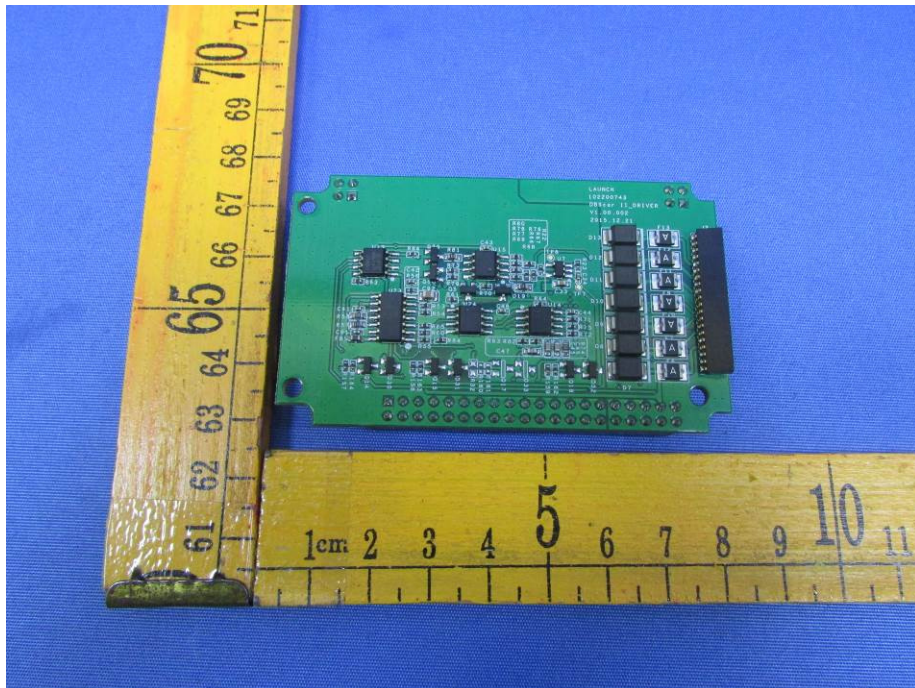
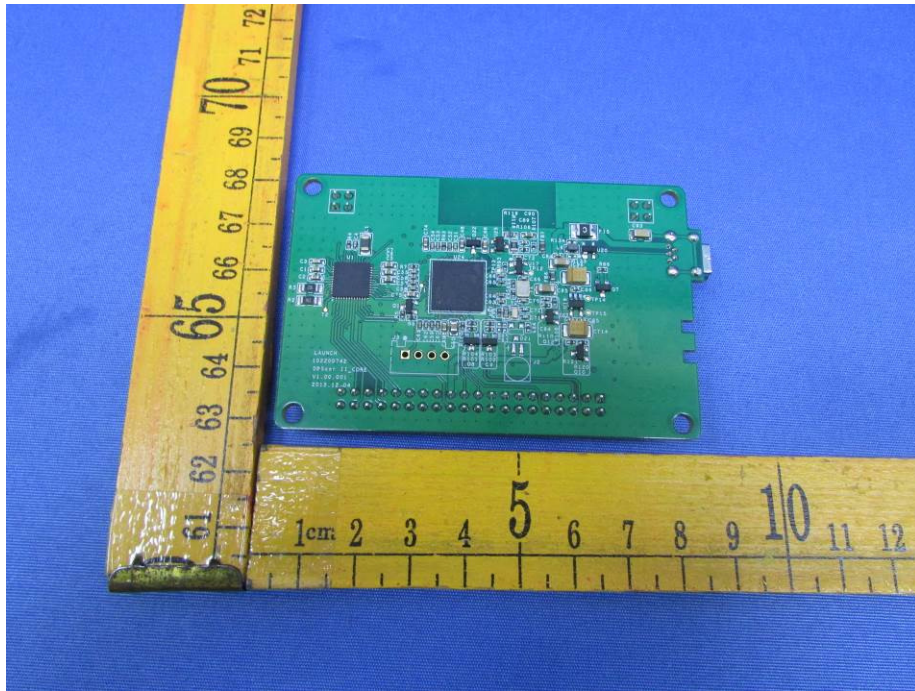


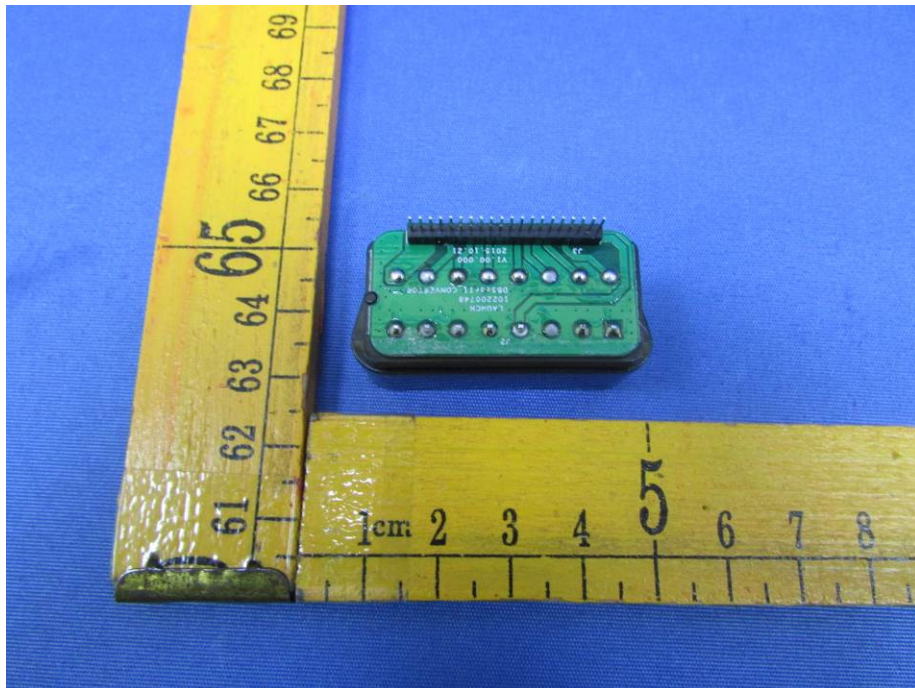
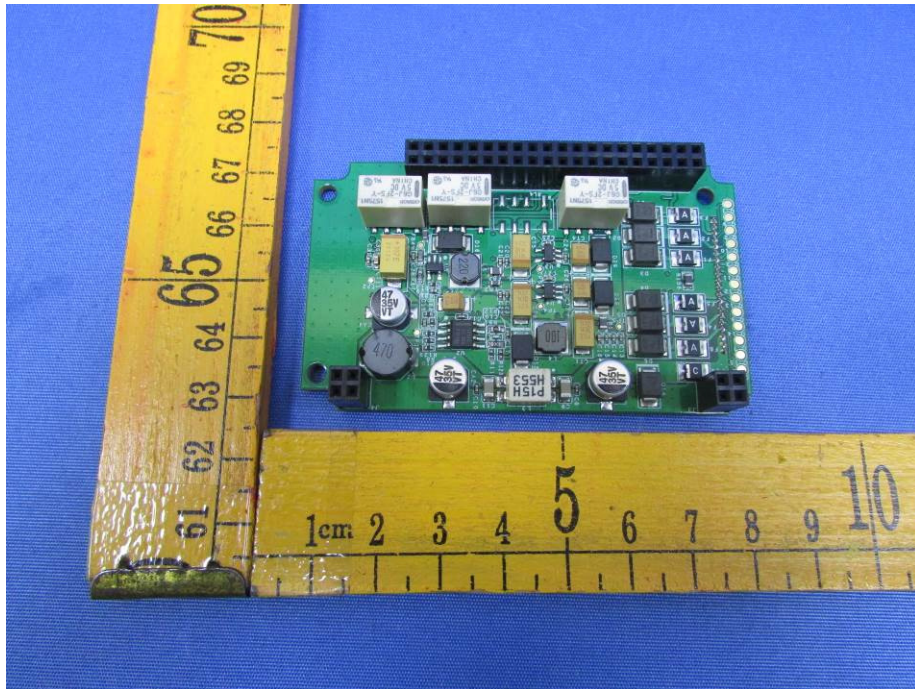


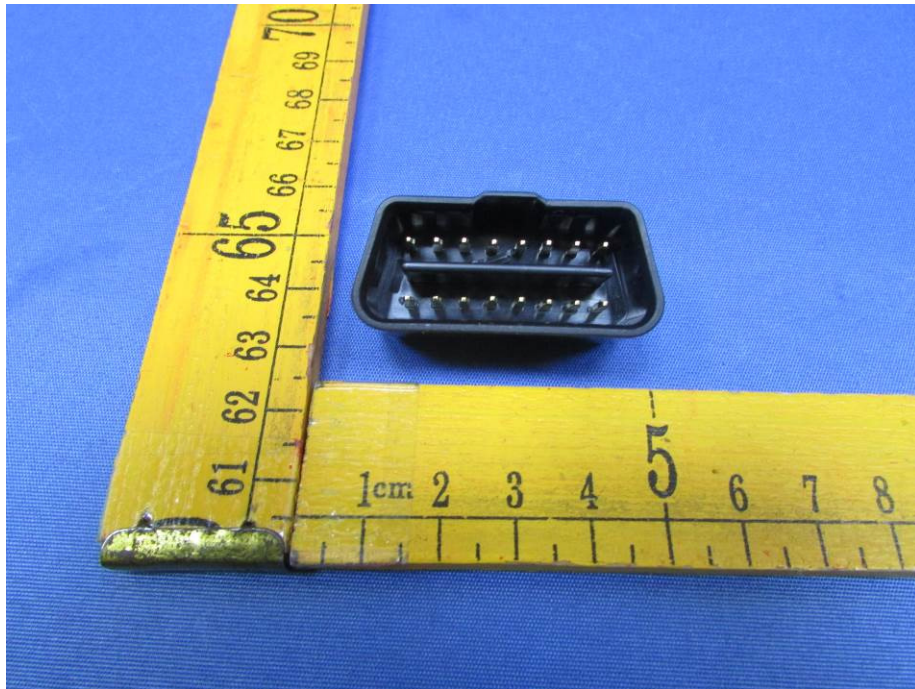
17.2 Model DS201-Internal Photos











===== End of Report =====