

# SAR TEST REPORT

Reference No. .... : WTS18S12133135-1W  
FCC ID..... : XUJCRP12X  
Applicant ..... : Launch Tech Co., Ltd.  
Address ..... : Launch Industrial Park, North of Wuhe Rd. Banxuegang, Longgang,  
Shenzhen, China  
Manufacturer ..... : The same as above  
Address ..... : The same as above  
Product ..... : Professional Diagnostic Tool  
Model(s)..... : Creader Professional 123i, Creader Professional 129i, Millennium  
Master  
Brand Name ..... : LAUNCH  
Standards ..... : FCC 47 CFR Part2(2.1093)  
ANSI/IEEE C95.1-2006  
IEEE 1528-2013 & Published RF Exposure KDB Procedures  
Date of Receipt sample .... : 2018-12-29  
Date of Test ..... : 2019-01-10  
Date of Issue ..... : 2019-01-14  
Test Result ..... : **Pass**

Remarks:

The results shown in this test report refer only to the sample(s) tested, this test report cannot be reproduced, except in full, without prior written permission of the company. The report would be invalid without specific stamp of test institute and the signatures of compiler and approver.

Prepared By:

Waltek Services (Shenzhen) Co., Ltd.

Address: 1/F., Fukangtai Building, West Baima Road, Songgang Street, Baoan District, Shenzhen,  
Guangdong, China

Tel :+86-755-83551033

Fax:+86-755-83552400

Compiled by:

*Ford Wang*

Ford Wang / Project Engineer

Approved by:



*Philo Zhong*

Philo Zhong / Manager

## 2 Laboratories Introduction

**Waltek Services (Shenzhen) Co., Ltd** is a professional third-party testing and certification laboratory with multi-year product testing and certification experience, established strictly in accordance with ISO/IEC 17025 requirements, and accredited by ILAC (International Laboratory Accreditation Cooperation) member. A2LA (American Association for Laboratory Accreditation, the certification number is 4243.01) of USA, CNAS (China National Accreditation Service for Conformity Assessment, the registration number is L3110) of China. Meanwhile, Waltek has got recognition as registration and accreditation laboratory from EMSD (Electrical and Mechanical Services Department), and American Energy star, FCC(The Federal Communications Commission), CEC(California energy efficiency), ISED (Innovation, Science and Economic Development Canada). It's the strategic partner and data recognition laboratory of international authoritative organizations, such as Intertek(ETL-SEMKO), TÜV Rheinland, TÜV SÜD, etc.



Waltek Services (Shenzhen) Co., Ltd is one of the largest and the most comprehensive third party testing laboratory in China. Our test capability covered four large fields: safety test. ElectroMagnetic Compatibility(EMC), and energy performance, wireless radio. As a professional, comprehensive, justice international test organization, we still keep the scientific and rigorous work attitude to help each client satisfy the international standards and assist their product enter into globe market smoothly.

**Test Facility:****A. Accreditations for Conformity Assessment (International)**

| Country/Region  | Scope Covered By | Scope              | Note |
|---|------------------|--------------------|------|
| USA   | ISO/IEC 17025    | FCC ID \ DOC \ VOC | 1    |
| Canada  |                  | IC ID \ VOC        | 2    |
| Japan   |                  | MIC-T \ MIC-R      | -    |
| Europe  |                  | EMCD \ RED         | -    |
| Taiwan  |                  | NCC                | -    |
| Hong Kong   |                  | OFCA               | -    |
| Australia   |                  | RCM                | -    |
| India   |                  | WPC                | -    |
| Thailand  |                  | NTC                | -    |
| Singapore   |                  | IDA                | -    |
| Note:   |                  |                    |      |
| 1. FCC Designation No.: CN1201. Test Firm Registration No.: 523476. |                  |                    |      |
| 2. ISED CAB identifier: CN0013                                      |                  |                    |      |

**B.TCBs and Notify Bodies Recognized Testing Laboratory.**

| Recognized Testing Laboratory of ...      | Notify body number |
|---|--------------------|
| TUV Rheinland                             | Optional.          |
| Intertek                                  |                    |
| TUV SUD                                   |                    |
| SGS                                       |                    |
| Phoenix Testlab GmbH                      | 0700               |
| Element Materials Technology Warwick Ltd. | 0891               |
| Timco Engineering, Inc.                   | 1177               |
| Eurofins Product Service GmbH             | 0681               |

### 3 Contents

|  | <b>Page</b> |
|--|-------------|
| <b>1 COVER PAGE .....</b>                            | <b>1</b>    |
| <b>2 LABORATORIES INTRODUCTION .....</b>             | <b>2</b>    |
| <b>3 CONTENTS .....</b>                              | <b>3</b>    |
| <b>4 REVISION HISTORY .....</b>                      | <b>5</b>    |
| <b>5 GENERAL INFORMATION .....</b>                   | <b>6</b>    |
| 5.1 GENERAL DESCRIPTION OF E.U.T. ....               | 6           |
| 5.2 DETAILS OF E.U.T. ....                           | 6           |
| <b>6 EQUIPMENT USED DURING TEST .....</b>            | <b>7</b>    |
| 6.1 EQUIPMENT LIST .....                             | 7           |
| 6.2 TEST EQUIPMENT CALIBRATION .....                 | 7           |
| <b>7 SAR INTRODUCTION.....</b>                       | <b>8</b>    |
| 7.1 INTRODUCTION .....                               | 8           |
| 7.2 SAR DEFINITION.....                              | 8           |
| <b>8 SAR MEASUREMENT SETUP .....</b>                 | <b>9</b>    |
| <b>9 EXPOSURE LIMIT .....</b>                        | <b>19</b>   |
| <b>10 SYSTEM AND LIQUID VALIDATION .....</b>         | <b>20</b>   |
| 10.1 SYSTEM VALIDATION .....                         | 20          |
| 10.2 LIQUID VALIDATION .....                         | 22          |
| <b>11 TYPE A MEASUREMENT UNCERTAINTY .....</b>       | <b>26</b>   |
| <b>12 OUTPUT POWER VERIFICATION.....</b>             | <b>29</b>   |
| <b>13 EXPOSURE CONDITIONS CONSIDERATION .....</b>    | <b>31</b>   |
| <b>14 SAR TEST RESULTS.....</b>                      | <b>33</b>   |
| <b>15 SAR MEASUREMENT REFERENCE.....</b>             | <b>35</b>   |
| MAXIMUM SAR MEASUREMENT PLOTS.....                   | 36          |
| <b>16 CALIBRATION REPORTS-PROBE AND DIPOLE .....</b> | <b>37</b>   |
| <b>17 SAR SYSTEM PHOTOS .....</b>                    | <b>57</b>   |
| <b>18 SETUP PHOTOS .....</b>                         | <b>58</b>   |
| <b>19 EUT PHOTOS .....</b>                           | <b>59</b>   |

#### 4 Revision History

| Test report No.   | Date of Receipt sample | Date of Test | Date of Issue | Purpose  | Comment | Approved |
|-------------------|------------------------|--------------|---------------|----------|---------|----------|
| WTS18S12133135-1W | 2018-12-29             | 2019-01-10   | 2019-01-14    | original | -       | Valid    |

## 5 General Information

### 5.1 General Description of E.U.T.

|                      |   |
|----------------------|---|
| Product:             | Professional Diagnostic Tool  |
| Model(s):            | Creader Professional 123i, Creader Professional 129i, Millennium Master |
| Model Description:   | Only different for mode names   |
| Wi-Fi Specification: | 2.4G-802.11b/g/n HT20/n HT40  |
| Hardware Version:    | V1.00.000   |
| Software Version:    | V60501_007  |
| Note:                | N/A   |

### 5.2 Details of E.U.T.

|                       |  |
|-----------------------|--|
| Operation Frequency:  | 802.11b/g/n HT20: 2412~2462MHz<br>802.11n HT40: 2422~2452MHz   |
| Max. RF output power: | WiFi(2.4G): 21.27dBm   |
| Max.SAR:              | 0.94 W/Kg 1g Body-worn Tissue  |
| Type of Modulation:   | WiFi: CCK, OFDM  |
| Antenna installation: | WiFi: internal permanent antenna   |
| Antenna Gain:         | WiFi(2.4G): 2.92dBi  |
| Ratings:              | Battery DC 3.7V 4000mAh<br>Car Battery DC 12V 1.2A<br>DC 5V, 2A, charging from adapter<br>(Adapter Input: 100-240V~50/60Hz, 0.35A) |
| Adapter :             | Manufacturer: Shenzhen TEKA Technology Co., Ltd.<br>Model No.: TEKA012-1201000EU<br>(sale without adapter)                         |

## 6 Equipment Used during Test

### 6.1 Equipment List

| Name of Equipment                    | Manufacturer      | Type/Model             | Serial Number          | Calibration Date | Calibration Due |
|--------------------------------------|-------------------|------------------------|------------------------|------------------|-----------------|
| 6 AXIS ROBOT                         | KUKA              | KR6 R900 SIXX          | 502635                 | N/A              | N/A             |
| SATIMO Test Software                 | MVG               | OPENSAR                | OPENSAR V_4_02_27      | N/A              | N/A             |
| PHANTOM TABLE                        | MVG               | N/A                    | SAR_1215_01            | N/A              | N/A             |
| SAM PHANTOM                          | MVG               | SAM118                 | SN 11/15 SAM118        | N/A              | N/A             |
| MultiMeter                           | Keithley          | MiltiMeter 2000        | 4073942                | 2018-02-28       | 2019-02-27      |
| Data Acquisition Electronics         | MVG               | DAE4                   | 915                    | 2018-02-28       | 2019-02-27      |
| S-Parameter Network Analyzer         | Agilent           | 8753E                  | JP38160684             | 2018-09-15       | 2019-09-14      |
| Universal Radio Communication Tester | ROHDE&SCHWARZ     | CMU200                 | 112461                 | 2018-09-15       | 2019-09-14      |
| Wideband Radio Communication Tester  | ROHDE&SCHWARZ     | CMW500                 | /                      | 2018-09-15       | 2019-09-14      |
| E-Field Probe                        | MVG               | SSE5                   | SN 07/15 EP247         | 2018-09-07       | 2019-09-06      |
| DIPOLE 2450                          | MVG               | SID2450                | SN 09/15 DIP 2G450-363 | 2018-02-28       | 2019-02-27      |
| Limesar Dielectric Probe             | MVG               | SCLMP                  | SN 11/15 OCPG 69       | 2018-02-28       | 2019-02-27      |
| Power Amplifier                      | BONN              | BLWA 0830 -160/100/40D | 128740                 | 2018-09-15       | 2019-09-14      |
| Signal Generator                     | R&S               | SMB100A                | 105942                 | 2018-09-15       | 2019-09-14      |
| Power Meter                          | R&S               | NRP2                   | 102031                 | 2018-09-15       | 2019-09-14      |
| Power Meter                          | R&S               | NRVD                   | 102284                 | 2018-09-15       | 2019-09-14      |
| USB Wideband Power Sensor            | Malaysia Keysight | U2021XA                | MY54340009             | 2018-04-20       | 2019-04-19      |
| USB Wideband Power Sensor            | Malaysia Keysight | U2021XA                | MY54340010             | 2018-04-20       | 2019-04-19      |

### 6.2 Test Equipment Calibration

All the test equipments used are valid and calibrated by CEPREI Certification Body that address is No.110 Dongguan Zhuang RD. Guangzhou, P.R.China.

## 7 SAR Introduction

### 7.1 Introduction

This measurement report shows compliance of the EUT with ANSI/IEEE C95.1-2006 and FCC 47 CFR Part2 (2.1093)

The test procedures, as described in IEEE 1528-2013 Standard for IEEE Recommended Practice for Determining the Peak Spatial-Average Specific Absorption Rate (SAR) in the Human Head from Wireless Communications Devices: Measurement Techniques(300MHz~6GHz) and Published RF Exposure KDB Procedures

### 7.2 SAR Definition

- ✘ SAR : Specific Absorption Rate
- ✘ The SAR characterize the absorption of energy by a quantity of tissue
- ✘ This is related to a increase of the temperature of these tissues during a time period.

$$DAS = \frac{d}{dt} \left( \frac{dW}{dm} \right) = \frac{d}{dt} \left( \frac{dW}{\rho dV} \right)$$

$$DAS = \frac{\sigma E^2}{\rho}$$

$$DAS = c_h \left. \frac{dT}{dt} \right|_{t=0}$$

#### SAR definition

$$SAR = \frac{\sigma E^2}{\rho}$$

- ✘ SAR : Specific Absorption Rate

- $\sigma$  : Liquid conductivity

- $\epsilon_r = \epsilon' - j\epsilon''$  (complex permittivity of liquid)

- $\sigma = \frac{\epsilon'' \omega}{\epsilon_0}$

- $\rho$ : Liquid density

- $\rho = 1000 \text{ g/L} = 1000 \text{ Kg/m}^3$

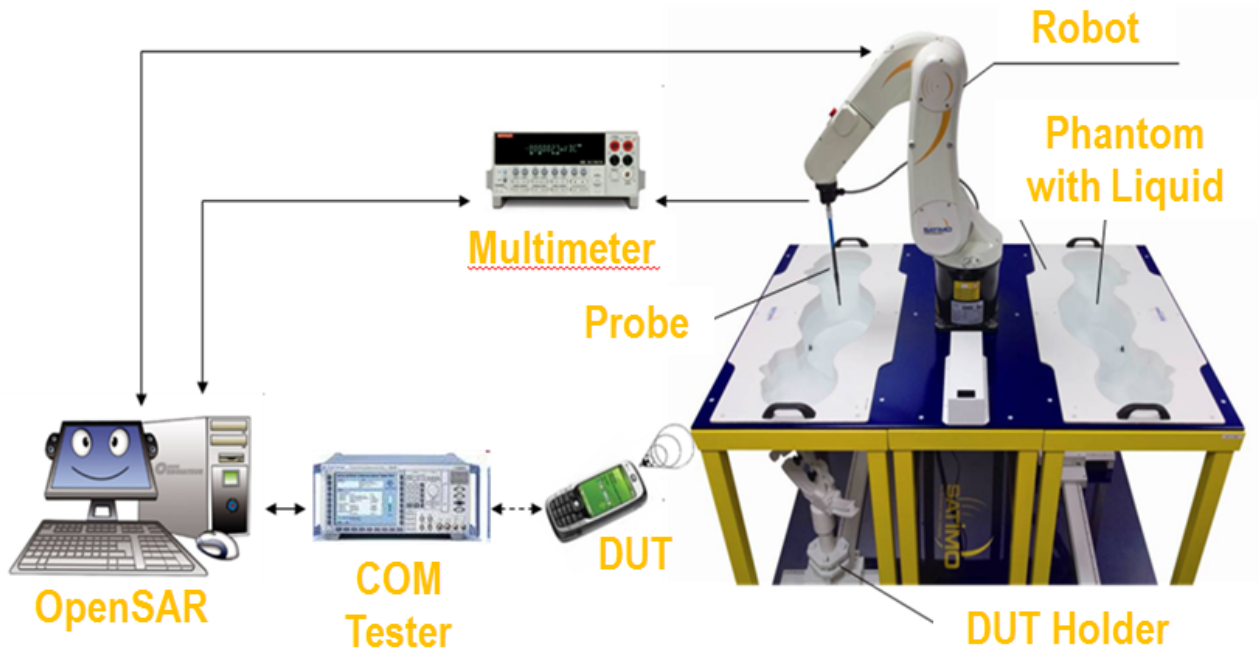
where:

- $\sigma$  = conductivity of the tissue (S/m)
- $\rho$  = mass density of the tissue (kg/m<sup>3</sup>)
- $E$  = rms electric field strength (V/m)



## 8 SAR Measurement Setup

### SAR bench sub-systems



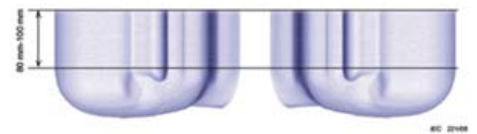
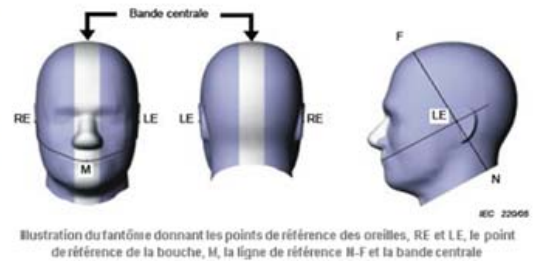
### Scanning System (robot)

- ❑ It must be able to scan all the volume of the phantom to evaluate the tridimensional distribution of SAR.
- ❑ Must be able to set the probe orthogonal of the surface of the phantom ( $\pm 30^\circ$ ).
- ❑ Detects stresses on the probe and stop itself if necessary to keep the integrity of the probe.

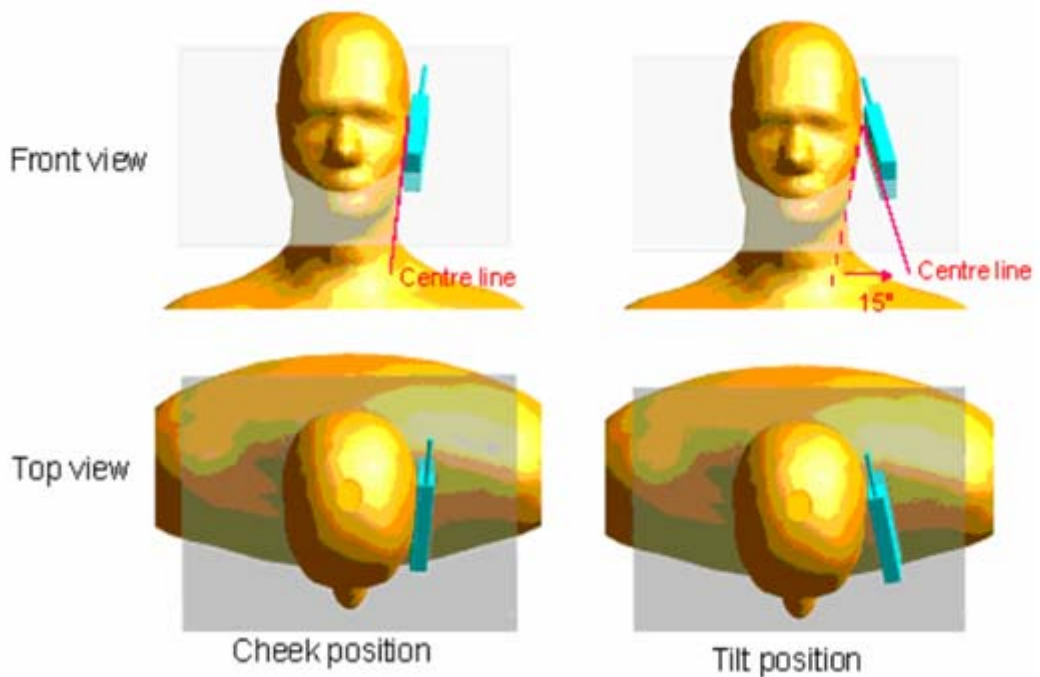


## SAM Phantom (Specific Anthropomorphic Mannequin)

- ▶ The probe scanning of the E-Field is done in the 2 half of the normalized head.
- ▶ The normalized shape of the phantom corresponds to the dimensions of 90% of an adult head size.
- ▶ The materials for the phantom should not affect the radiation of the device under test (DUT)
  - Permittivity < 5
- ▶ The head is filled with tissue simulating liquid.
- ▶ The hand holding the DUT does not have to be modeled.



Bi-section sagittale du fantôme avec périmètre étendu (montrée sur le côté comme lors des essais de DAS de l'appareil)



**The OPENSAR system for performing compliance tests consist of the following items:**

1. A standard high precision 6-axis robot (KUKA) with controller and software.
2. KUKA Control Panel (KCP).
3. A dosimetric probe, i.e., an isotropic E-field probe optimized and calibrated for usage in tissue simulating liquid. The probe is equipped with an optical surface detector system.
4. The functions of the PC plug-in card are to perform the time critical task such as signal filtering, surveillance of the robot operation fast movement interrupts.
5. A computer operating Windows 7.
6. OPENSAR software.
7. Remote control with teaches pendant and additional circuitry for robot safety such as warning lamps, etc.
8. The SAM phantom enabling testing left-hand right-hand and body usage.
9. The Position device for handheld EUT.
10. Tissue simulating liquid mixed according to the given recipes (see Application Note).
11. System validation dipoles to validate the proper functioning of the system.

### Data Evaluation

The OPENSAR software automatically executes the following procedure to calculate the field units from the microvolt readings at the probe connector. The parameters used in the valuation are stored in the configuration modules of the software:

|                  |                                   |                   |
|------------------|-----------------------------------|-------------------|
| Probe Parameters | - Sensitivity                     | Norm <sub>i</sub> |
|                  | - Conversion factor               | ConvFi            |
|                  | - Diode compression point<br>Dcpi |                   |
| Device Parameter | - Frequency                       | f                 |
|                  | - Crest factor                    | cf                |
| Media Parametrs  | - Conductivity                    | σ                 |
|                  | - Density                         | ρ                 |

These parameters must be set correctly in the software. They can either be found in the component documents or be imported into the software from the configuration files issued for the OPENSAR components.

The first step of the evaluation is a linearization of the filtered input signal to account for the compression characteristics of the detector diode. The compensation depends on the input signal, the diode type and the DC-transmission factor from the diode to the evaluation electronics. If the exciting field is pulsed, the crest factor of the signal must be known to correctly compensate for peak power. The formula for each channel can be given as

$$V_i = U_i + U_i^2 \cdot \frac{cf}{dcp_i}$$

Where  $V_i$  = Compensated signal of channel  $i$  ( $i = x, y, z$ )

$U_i$  = Input signal of channel  $i$  ( $i = x, y, z$ )

$cf$  = Crest factor of exciting field (DASY parameter)

$dcp_i$  = Diode compression point (DASY parameter)

From the compensated input signals the primary field data for each channel can be evaluated:

$$E\text{-field probes: } E_i = \sqrt{\frac{V_i}{\text{Norm}_i \cdot \text{ConvF}}}$$

$$H\text{-field probes: } H_i = \sqrt{V_i} \cdot \frac{a_{i0} + a_{i1}f + a_{i2}f^2}{f}$$

Where  $V_i$  = Compensated signal of channel  $i$  ( $i = x, y, z$ )  
 $\text{Norm}_i$  = Sensor sensitivity of channel  $i$  ( $i = x, y, z$ )  
 $\mu\text{V}/(\text{V/m})^2$  for E0field Probes  
 $\text{ConvF}$  = Sensitivity enhancement in solution  
 $a_{ij}$  = Sensor sensitivity factors for H-field probes

$f$  = Carrier frequency (GHz)  
 $E_i$  = Electric field strength of channel  $i$  in V/m  
 $H_i$  = Magnetic field strength of channel  $i$  in A/m

The RSS value of the field components gives the total field strength (Hermitian magnitude):

$$E_{\text{tot}} = \sqrt{E_x^2 + E_y^2 + E_z^2}$$

The primary field data are used to calculate the derived field units.

$$\text{SAR} = E_{\text{tot}}^2 \cdot \frac{\sigma}{\rho \cdot 1000}$$

where SAR = local specific absorption rate in mW/g  
 $E_{\text{tot}}$  = total field strength in V/m  
 $\sigma$  = conductivity in [mho/m] or [siemens/m]  
 $\rho$  = equivalent tissue density in g/cm<sup>3</sup>

Note that the density is normally set to 1 (or 1.06), to account for actual brain density rather than the density of the simulation liquid.

The power flow density is calculated assuming the excitation field as a free space field.

$$P_{\text{pwe}} = \frac{E_{\text{tot}}^2}{3770} \quad \text{or} \quad P_{\text{pwe}} = H_{\text{tot}}^2 \cdot 37.7$$

where  $P_{\text{pwe}}$  = Equivalent power density of a plane wave in mW/cm<sup>2</sup>  
 $E_{\text{tot}}$  = total electric field strength in V/m  
 $H_{\text{tot}}$  = total magnetic field strength in A/m

### **SAR Evaluation – Peak Spatial - Average**

The procedure for assessing the peak spatial-average SAR value consists of the following steps

- **Power Reference Measurement**

The reference and drift jobs are useful jobs for monitoring the power drift of the device under test in the batch process. Both jobs measure the field at a specified reference position, at a selectable distance from the phantom surface. The reference position can be either the selected section's grid reference point or a user point in this section. The reference job projects the selected point onto the phantom surface, orients the probe perpendicularly to the surface, and approaches the surface using the selected detection method.

- **Area Scan**

The area scan is used as a fast scan in two dimensions to find the area of high field values, before doing a finer measurement around the hot spot. The sophisticated interpolation routines implemented in OPENSAR software can find the maximum locations even in relatively coarse grids. The scan area is defined by an editable grid. This grid is anchored at the grid reference point of the selected section in the phantom. When the area scan's property sheet is brought-up, grid was at to 15 mm by 15 mm and can be edited by a user.

- **Zoom Scan**

Zoom scans are used to assess the peak spatial SAR values within a cubic averaging volume containing 1 g and 10 g of simulated tissue. The default zoom scan measures 5 x 5 x 7 points within a cube whose base faces are centered around the maximum found in a preceding area scan job within the same procedure. If the preceding Area Scan job indicates more than one maximum, the number of Zoom Scans has to be enlarged accordingly (The default number inserted is 1).

- **Power Drift measurement**

The drift job measures the field at the same location as the most recent reference job within the same procedure, and with the same settings. The drift measurement gives the field difference in dB from the reading conducted within the last reference measurement. Several drift measurements are possible for one reference measurement. This allows a user to monitor the power drift of the device under test within a batch process. In the properties of the Drift job, the user can specify a limit for the drift and have OPENSAR software stop the measurements if this limit is exceeded.

### **SAR Evaluation – Peak SAR**

The procedure for spatial peak SAR evaluation has been implemented according to the IEEE1528 standard. It can be conducted for 1 g and 10 g. The OPENSAR system allows evaluations that combine measured data and robot positions, such

as:

- maximum search
- extrapolation
- boundary correction
- peak search for averaged SAR

During a maximum search, global and local maximum searches are automatically performed in 2-D after each Area Scan measurement with at least 6 measurement points. It is based on the evaluation of the local SAR gradient calculated by the Quadratic Shepard's method. The algorithm will find the global maximum and all local maxima within -2 dB of the global maxima for all SAR distributions.

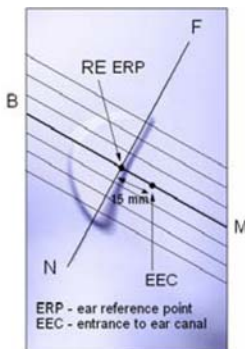
### Extrapolation

Extrapolation routines are used to obtain SAR values between the lowest measurement points and the inner phantom surface. The extrapolation distance is determined by the surface detection distance and the probe sensor offset. Several measurements at different distances are necessary for the extrapolation. They are used in the Cube Scan to obtain SAR values between the lowest measurement points and the inner phantom surface. The routine uses the fourth order least square polynomial method for extrapolation. For a grid using 5x5x7 measurement points with 5mm resolution amounting to 343 measurement points, the uncertainty of the extrapolation routines is less than 1% for 1 g and 10 g cubes.

### Definition of Reference Points

#### Ear Reference Point

Figure 6.2 shows the front, back and side views of the SAM Phantom. The point “M” is the reference point for the center of the mouth, “LE” is the left ear reference point (ERP), and “RE” is the right ERP. The ERPs are 15mm posterior to the entrance to the ear canal (EEC) along the B-M line (Back-Mouth), as shown in Figure 6.1. The plane passing through the two ear canals and M is defined as the Reference Plane. The line N-F (Neck-Front) is perpendicular to the reference plane and passing through the RE (or LE) is called the Reference Pivoting Line (see Figure 6.1). Line B-M is perpendicular to the N-F line. Both N-F and B-M lines are marked on the external phantom shell to facilitate handset positioning [5].



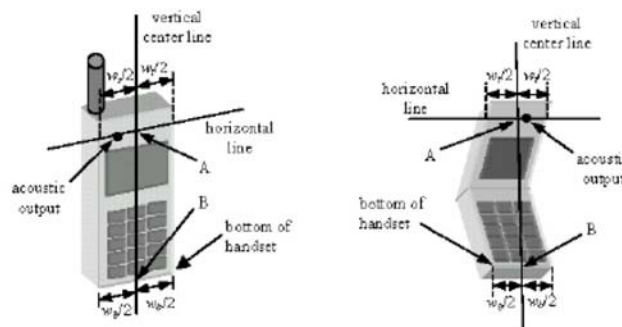
**Figure 6.1 Close-up side view of ERP's**



**Figure 6.2 Front, back and side view of SAM**

### Device Reference Points

Two imaginary lines on the device need to be established: the vertical centerline and the horizontal line. The test device is placed in a normal operating position with the “test device reference point” located along the “vertical centerline” on the front of the device aligned to the “ear reference point” (See Fig. 6.3). The “test device reference point” is then located at the same level as the center of the ear reference point. The test device is positioned so that the “vertical centerline” is bisecting the front surface of the device at its top and bottom edges, positioning the “ear reference point” on the outer surface of both the left and right head phantoms on the ear reference point [5].

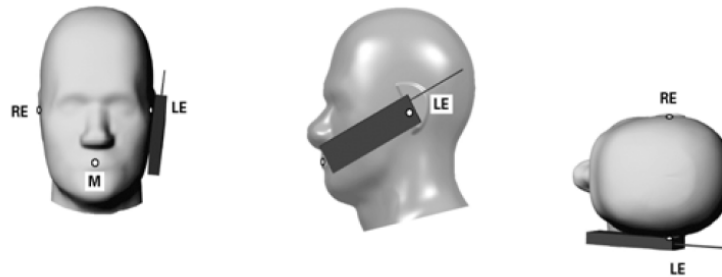


**Figure 6.3 Handset Vertical Center & Horizontal Line Reference Points**



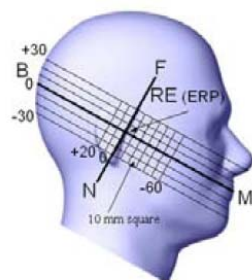
### Test Configuration – Positioning for Cheek / Touch

1. Position the device close to the surface of the phantom such that point A is on the (virtual) extension of the line passing through points RE and LE on the phantom (see Figure below), such that the plane defined by the vertical center line and the horizontal line of the device is approximately parallel to the sagittal plane of the phantom



**Figure 7.1 Front, Side and Top View of Cheek/Touch Position**

2. Translate the device towards the phantom along the line passing through RE and LE until the device touches the ear.
3. While maintaining the device in this plane, rotate it around the LE-RE line until the vertical centerline is in the plane normal to MB-NF including the line MB (called the reference plane).
4. Rotate the device around the vertical centerline until the device (horizontal line) is symmetrical with respect to the line NF.
5. While maintaining the vertical centerline in the reference plane, keeping point A on the line passing through RE and LE and maintaining the device contact with the ear, rotate the device about the line NF until any point on the device is in contact with a phantom point below the ear (cheek). See Figure below.

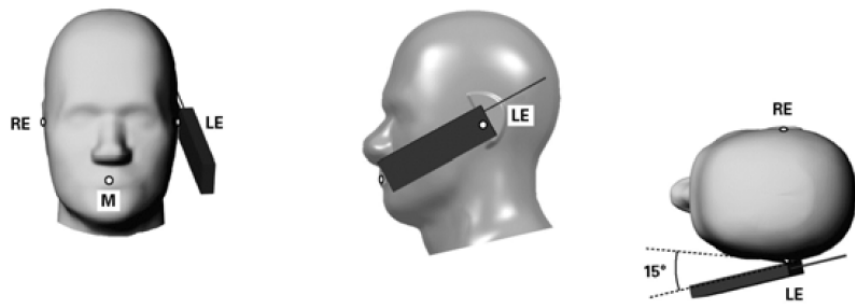


**Figure 7.2 Side view w/ relevant markings**

### Test Configuration – Positioning for Ear / 15° Tilt

With the test device aligned in the Cheek/Touch Position”:

1. While maintaining the orientation of the device, retract the device parallel to the reference plane far enough to enable a rotation of the device by 15 degrees.
2. Rotate the device around the horizontal line by 15 degrees.
3. While maintaining the orientation of the device, move the device parallel to the reference plane until any part of the device touches the head. (In this position, point A is located on the line RE-LE). The tilted position is obtained when the contact is on the pinna. If the contact is at any location other than the pinna, the angle of the device shall be reduced. The tilted position is obtained when any part of the device is in contact with the ear as well as a second part of the device is in contact with the head (see Figure below).

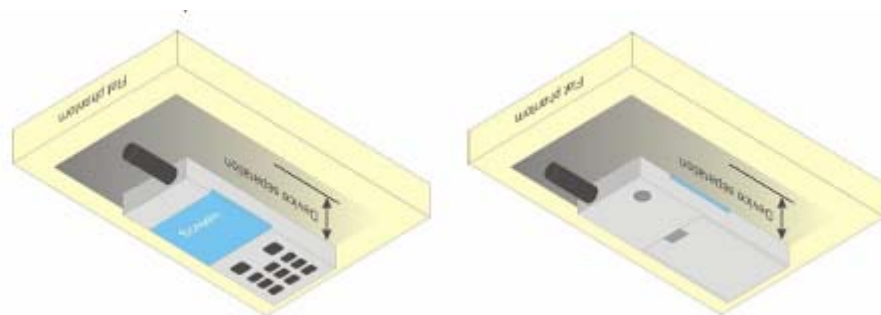


**Figure 7.3 Front, Side and Top View of Ear/15° Tilt Position**

### Test Position – Body Configurations

#### Body Worn Position

- (a) To position the device parallel to the phantom surface with either keypad up or down.
- (b) To adjust the device parallel to the flat phantom.
- (c) To adjust the distance between the device surface and the flat phantom to 1.0 cm or holster surface and the flat phantom to 0 cm.



## 9 Exposure limit

In order for users to be aware of the body-worn operating requirements for meeting RF exposure compliance, operating instructions and cautions statements are included in the user's manual.

### Uncontrolled Environment

Uncontrolled Environments are defined as locations where there is the exposure of individuals who have no knowledge or control of their exposure. The general population/uncontrolled exposure limits are applicable to situations in which the general public may be exposed or in which persons who are exposed as a consequence of their employment may not be made fully aware of the potential for exposure or cannot exercise control over their exposure. Members of the general public would come under this category when exposure is not employment-related; for example, in the case of a wireless transmitter that exposes persons in its vicinity.

### Controlled Environment

Controlled Environments are defined as locations where there is exposure that may be incurred by persons who are aware of the potential for exposure, (i.e. as a result of employment or occupation). In general, occupational/controlled exposure limits are applicable to situations in which persons are exposed as a consequence of their employment, who have been made fully aware of the potential for exposure and can exercise control over their exposure. This exposure category is also applicable when the exposure is of a transient nature due to incidental passage through a location where the exposure levels may be higher than the general population/uncontrolled limits, but the exposed person is fully aware of the potential for exposure and can exercise control over his or her exposure by leaving the area or by some other appropriate means.

**Table 8.1 Human Exposure Limits**

|  | UNCONTROLLED ENVIRONMENT<br>General Population<br>(W/kg) or (mW/g) | CONTROLLED ENVIROMENT<br>Professional Population<br>(W/kg) or (mW/g) |
|--|--|--|
| SPATIAL PEAK SAR <sup>1</sup><br>Brain                       | 1.60   | 8.00   |
| SPATIAL AVERAGE SAR <sup>2</sup><br>Whole Body               | 0.08   | 0.40   |
| SPATIAL PEAK SAR <sup>3</sup><br>Hands, Feet, Ankles, Wrists | 4.00   | 20.00  |

<sup>1</sup> The Spatial Peak value of the SAR averaged over any 1 gram of tissue (defined as a tissue volume in the shape of a cube) and over the appropriate averaging time.

<sup>2</sup> The Spatial Average value of the SAR averaged over the whole body.

<sup>3</sup> The Spatial Peak value of the SAR averaged over any 10 grams of tissue (defined as a tissue volume in the shape of a cube) and over the appropriate averaging time.

## 10 System and liquid validation

### 10.1 System validation

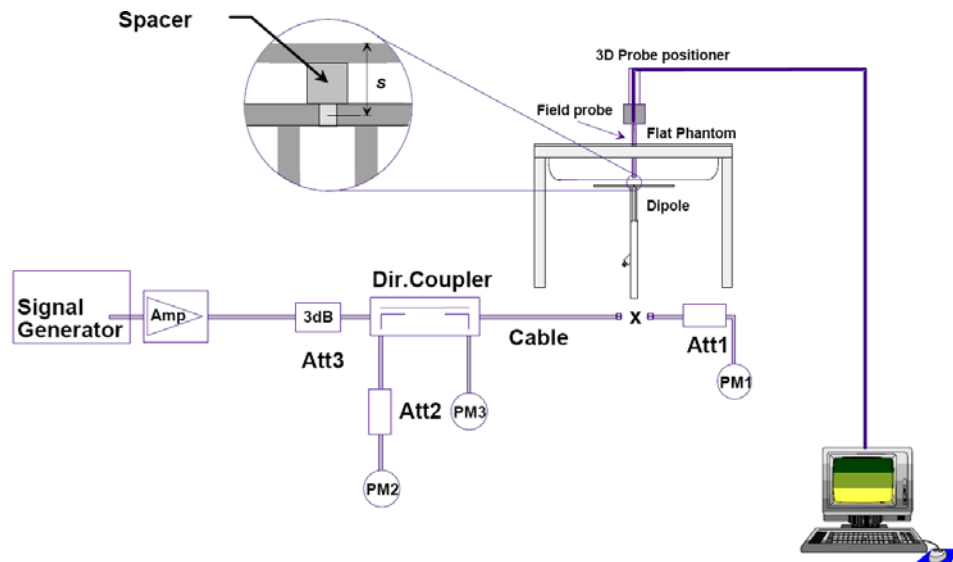


Fig 8.1 System Setup for System Evaluation

The system performance check verifies that the system operates within its specifications. System and operator errors can be detected and corrected. It is recommended that the system performance check be performed prior to any usage of the system in order to guarantee reproducible results. The system performance check uses normal SAR measurements in a simplified setup with a well characterized source. This setup was selected to give a high sensitivity to all parameters that might fail or vary over time. The system check does not intend to replace the calibration of the components, but indicates situations where the system uncertainty is exceeded due to drift or failure.

In the simplified setup for system evaluation, the DUT is replaced by a calibrated dipole and the power source is replaced by a continuous wave that comes from a signal generator. The calibrated dipole must be placed beneath the flat phantom section of the SAM twin phantom with the correct distance holder. The distance holder should touch the phantom surface with a light pressure at the reference marking and be oriented parallel to the long side of the phantom. The equipment setup is shown below:

1. Signal Generator
2. Amplifier
3. Directional Coupler
4. Power Meter
5. Calibrated Dipole

The output power on dipole port must be calibrated to 30 dBm (1000 mW) before dipole is connected.

### Numerical reference SAR values (W/kg) for reference dipole and flat phantom

| Frequency (MHz) | 1g SAR | 10g SAR | Local SAR at surface(above feed-point) | Local SAR at surface(y = 2 cm offset from feedpoint) |
|-----------------|--------|---------|--|--|
| 300             | 3.02   | 2.04    | 4.40                                   | 2.10   |
| 450             | 4.92   | 3.28    | 7.20                                   | 3.20   |
| 750             | 8.49   | 5.55    | 12.6                                   | 4.59   |
| 835             | 9.56   | 6.22    | 14.1                                   | 4.90   |
| 900             | 10.9   | 6.99    | 16.4                                   | 5.40   |
| 1450            | 29.0   | 16.0    | 50.2                                   | 6.50   |
| 1800            | 38.4   | 20.1    | 69.5                                   | 6.80   |
| 1900            | 39.7   | 20.5    | 72.1                                   | 6.60   |
| 2000            | 41.1   | 21.1    | 74.6                                   | 6.50   |
| 2450            | 52.4   | 24.0    | 104                                    | 7.70   |
| 2600            | 55.3   | 24.6    | 113                                    | 8.29   |
| 3000            | 63.8   | 25.7    | 140                                    | 9.50   |

**Table 1: system validation (1g)**

| Measurement Date | Frequency (MHz) | Liquid Type (head/body) | 1W Target SAR1g (W/kg) | Measured SAR1g (W/kg) | 1W Normalized SAR1g (W/kg) | Deviation (%) |
|------------------|-----------------|-------------------------|------------------------|-----------------------|----------------------------|---------------|
| 2019-01-10       | 2450            | body                    | 50.67                  | 0.5185                | 51.85                      | 2.3           |

Note: system check input power: 10mW

## 10.2 liquid validation

The dielectric parameters were checked prior to assessment using the HP85070C dielectric probe kit. The dielectric parameters measured are reported in each correspondent section.

### KDB 865664 recommended Tissue Dielectric Parameters

The head and body tissue parameters given in this below table should be used to measure the SAR of transmitters operating in 100 MHz to 6 GHz frequency range. The tissue dielectric parameters of the tissue medium at the test frequency should be within the tolerance required in this document. The dielectric parameters should be linearly interpolated between the closest pair of target frequencies to determine the applicable dielectric parameters corresponding to the device test frequency.

The head tissue dielectric parameters recommended by IEEE Std 1528-2013 have been incorporated in the following table. These head parameters are derived from planar layer models simulating the highest expected SAR for the dielectric properties and tissue thickness variations in a human head. Other head and body tissue parameters that have not been specified in 1528 are derived from tissue dielectric parameters computed from the 4-Cole-Cole equations described above and extrapolated according to the head parameters specified in 1528.

| Target Frequency | Head Tissue |              | Body Tissue    |              |
|------------------|-------------|--------------|----------------|--------------|
|                  | MHz         | $\epsilon_r$ | $\sigma$ (S/m) | $\epsilon_r$ |
| 150              | 52.3        | 0.76         | 61.9           | 0.80         |
| 300              | 45.3        | 0.87         | 58.2           | 0.91         |
| 450              | 43.5        | 0.87         | 56.7           | 0.94         |
| 835              | 41.5        | 0.90         | 55.2           | 0.97         |
| 900              | 41.5        | 0.97         | 55.0           | 1.05         |
| 915              | 41.5        | 0.95         | 55.0           | 1.06         |
| 1450             | 40.5        | 1.20         | 54.0           | 1.30         |
| 1610             | 40.3        | 1.29         | 53.8           | 1.40         |
| 1800-2000        | 40.0        | 1.40         | 53.3           | 1.52         |
| 2450             | 39.2        | 1.80         | 52.7           | 1.95         |
| 2600             | 39.0        | 1.96         | 52.5           | 2.16         |
| 3000             | 38.5        | 2.40         | 52.0           | 2.73         |
| 5800             | 35.3        | 5.27         | 48.2           | 6.00         |

### Tissue Dielectric Parameters for Head and Body Phantoms

The head tissue dielectric parameters recommended by the IEEE SCC-34/SC-2 in P1528 have been incorporated in the following table. These head parameters are derived from planar layer models simulating the highest expected SAR for the dielectric properties and tissue thickness Power drifts in a human head. Other head and body tissue parameters that have not been specified in P1528 are derived from the tissue dielectric parameters computed from the 4-Cole-Cole equations described in Reference [12] and extrapolated according to the head parameters specified in P1528.

**Table 2: Recommended Dielectric Performance of Tissue**

| Recommended Dielectric Performance of Tissue |                 |       |       |      |      |      |       |      |      |      |
|--|-----------------|-------|-------|------|------|------|-------|------|------|------|
| Ingredients<br>(% by weight )                | Frequency (MHz) |       |       |      |      |      |       |      |      |      |
|  | 750             |       | 835   |      | 1800 |      | 1900  |      | 2600 |      |
| Tissue Type                                  | Head            | Body  | Head  | Body | Head | Body | Head  | Body | Head | Body |
| Water  | 40.52           | 51.83 | 41.46 | 52.4 | 55.2 | 70.2 | 54.9  | 40.4 | 54.8 | 68.1 |
| Salt (Nacl)                                  | 1.61            | 1.52  | 1.45  | 1.4  | 0.3  | 0.4  | 0.18  | 0.5  | 0.1  | 0.01 |
| Sugar  | 57.67           | 46.45 | 56.0  | 45.0 | 0.0  | 0.0  | 0.0   | 58.0 | 0.0  | 0.0  |
| HEC  | 0.1             | 0.1   | 1.0   | 1.0  | 0.0  | 0.0  | 0.0   | 1.0  | 0.0  | 0.0  |
| Bactericide                                  | 0.1             | 0.1   | 0.1   | 0.1  | 0.0  | 0.0  | 0.0   | 0.1  | 0.0  | 0.0  |
| Triton x-100                                 | 0.0             | 0.0   | 0.0   | 0.0  | 0.0  | 0.0  | 0.0   | 0.0  | 0.0  | 0.0  |
| DGBE   | 0.0             | 0.0   | 0.0   | 0.0  | 44.5 | 29.4 | 44.92 | 0.0  | 45.1 | 31.8 |
| Dielectric                                   | 40.91           | 54.32 | 42.54 | 56.1 | 40.0 | 53.3 | 39.9  | 54.0 | 39.0 | 52.5 |
| Conductivity                                 | 0.87            | 0.95  | 0.91  | 0.95 | 1.40 | 1.52 | 1.43  | 1.45 | 1.96 | 2.15 |

**Table 3: Dielectric Performance of Body Tissue Simulating Liquid**

| Temperature: 21.8°C , Relative humidity: 48.3% , Measured Date: 2019-01-10 |               |                                  |                        |                      |
|--|---------------|----------------------------------|------------------------|----------------------|
| Frequency(MHz)   | Measured Date | Description                      | Dielectric Parameters  |                      |
|  |               |                                  | $\epsilon_r$           | $\sigma(\text{s/m})$ |
| 2450   | 2019-01-10    | Target Value<br>$\pm 5\%$ window | 52.70<br>50.07 — 55.34 | 1.95<br>1.86 — 2.05  |
|  |               | Measurement Value                | 52.01                  | 1.96                 |



## System Verification Plots

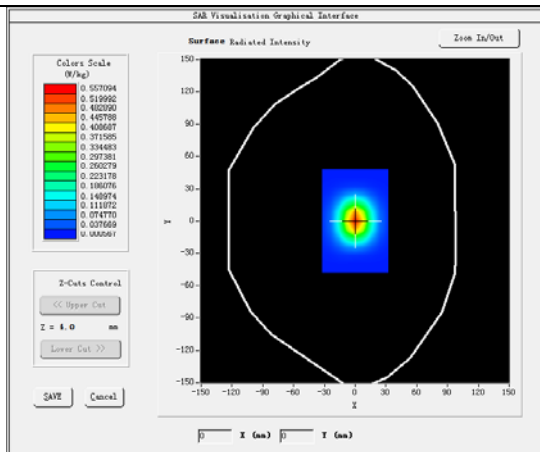
Product Description: Dipole

Model: SID2450

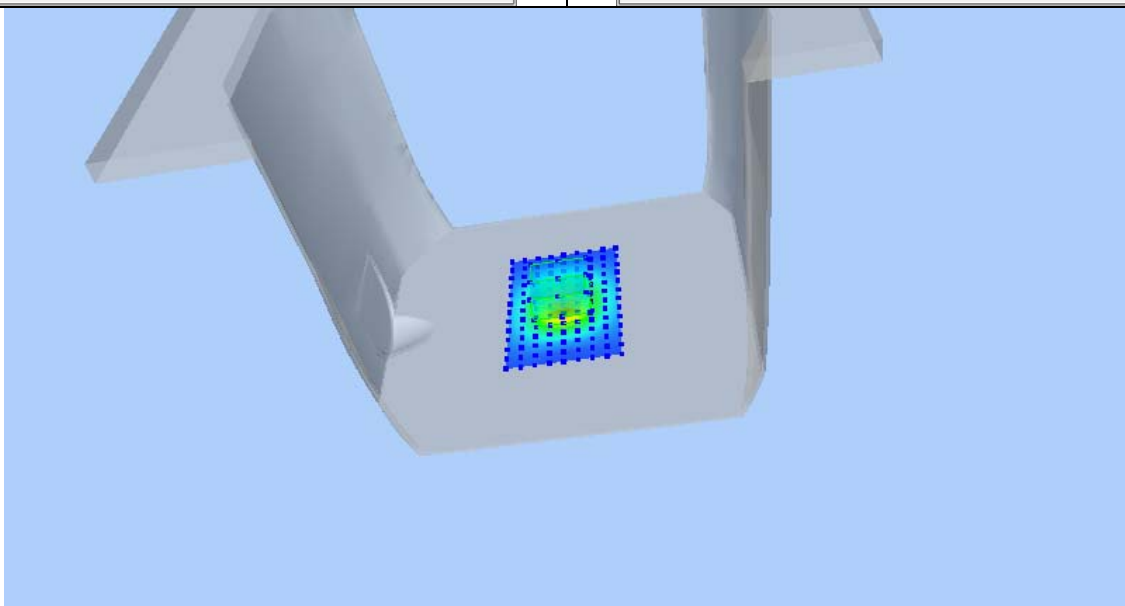
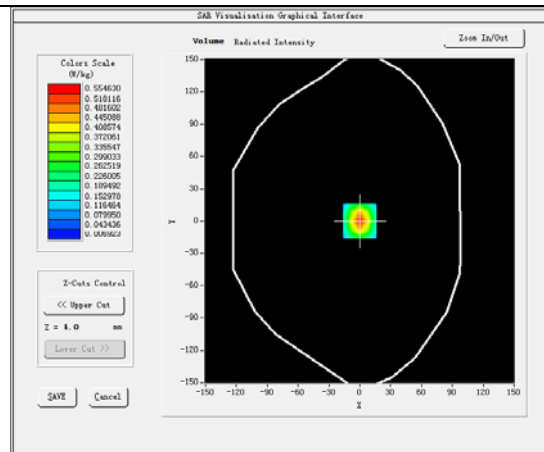
Test Date: 2019-01-10

|                                   |                            |
|-----------------------------------|----------------------------|
| Medium(liquid type)               | MSL_2450                   |
| Frequency (MHz)                   | 2450.000                   |
| Relative permittivity (real part) | 52.01                      |
| Conductivity (S/m)                | 1.96                       |
| Input power                       | 10mW                       |
| E-Field Probe                     | SN 07/15 EP247             |
| Duty cycle                        | 1:1                        |
| Conversion Factor                 | 5.80                       |
| Sensor-surface                    | 4mm                        |
| Area Scan                         | dx=8mm dy=8mm              |
| Zoom Scan                         | 5x5x7,dx=8mm dy=8mm dz=5mm |
| Variation (%)                     | 0.28                       |
| SAR 10g (W/Kg)                    | 0.236641                   |
| SAR 1g (W/Kg)                     | 0.518528                   |

### SURFACE SAR



### VOLUME SAR



## 11 Type a Measurement Uncertainty

The component of uncertainty may generally be categorized according to the methods used to evaluate them. The evaluation of uncertainty by the statistical analysis of a series of observations is termed a Type A evaluation of uncertainty. The evaluation of uncertainty by means other than the statistical analysis of a series of observation is termed a Type B evaluation of uncertainty. Each component of uncertainty, however evaluated, is represented by an estimated standard deviation, termed standard uncertainty, which is determined by the positive square root of the estimated variance

A Type A evaluation of standard uncertainty may be based on any valid statistical method for treating data. This includes calculating the standard deviation of the mean of a series of independent observations; using the method of least squares to fit a curve to the data in order to estimate the parameter of the curve and their standard deviations; or carrying out an analysis of variance in order to identify and quantify random effects in certain kinds of measurement.

A type B evaluation of standard uncertainty is typically based on scientific judgment using all of the relevant information available. These may include previous measurement data, experience and specification, data provided in calibration reports and uncertainties assigned to reference data taken from handbooks. Broadly speaking, the uncertainty is either obtained from an outdoor source or obtained from an assumed distribution, such as the normal distribution, rectangular or triangular distributions indicated in Table below :

| Uncertainty Distribution           | Normal      | Rectangle    | Triangular   | U Shape      |
|------------------------------------|-------------|--------------|--------------|--------------|
| Multi-plying Factor <sup>(a)</sup> | $1/k^{(b)}$ | $1/\sqrt{3}$ | $1/\sqrt{6}$ | $1/\sqrt{2}$ |

(a) standard uncertainty is determined as the product of the multiplying factor and the estimated range of variations in the measured quantity

(b)  $k$  is the coverage factor

### Standard Uncertainty for Assumed Distribution

The combined standard uncertainty of the measurement result represents the estimated standard deviation of the result. It is obtained by combining the individual standard uncertainties of both Type A and Type -sum- by taking the positive square root of the estimated variances.

Expanded uncertainty is a measure of uncertainty that defines an interval about the measurement result within which the measured value is confidently believed to lie. It is obtained by multiplying the combined standard uncertainty by a coverage factor. Typically, the coverage factor ranges from 2 to 3. Using a coverage factor allows the true value of a measured quantity to be specified with a defined probability within the specified uncertainty range. For purpose of this document, a coverage factor two is used, which corresponds to confidence interval of about 95 %.

The COMOSAR Uncertainty Budget is show in below table:

| UNCERTAINTY FOR SYSTEM PERFORMANCE CHECK  |               |                |            |             |              |                    |                     |     |
|---|---------------|----------------|------------|-------------|--------------|--------------------|---------------------|-----|
| Uncertainty Component   | Tol.<br>(± %) | Prob.<br>Dist. | Div.       | ci<br>(1 g) | ci<br>(10 g) | 1 g<br>ui<br>(± %) | 10 g<br>ui<br>(± %) | vi  |
| <b>Measurement System</b>   |               |                |            |             |              |                    |                     |     |
| Probe Calibration   | 5,8           | N              | 1          | 1           | 1            | 5,8                | 5,8                 | ∞   |
| Axial Isotropy  | 3,5           | R              | $\sqrt{3}$ | $(1-cp)/2$  | $(1-cp)/2$   | 1,42887            | 1,42887             | ∞   |
| Hemispherical Isotropy  | 5,9           | R              | $\sqrt{3}$ | $\sqrt{Cp}$ | $\sqrt{Cp}$  | 2,40866            | 2,40866             | ∞   |
| Boundary Effect   | 1             | R              | $\sqrt{3}$ | 1           | 1            | 0,57735            | 0,57735             | ∞   |
| Linearity   | 4,7           | R              | $\sqrt{3}$ | 1           | 1            | 2,71355            | 2,71355             | ∞   |
| System Detection Limits   | 1             | R              | $\sqrt{3}$ | 1           | 1            | 0,57735            | 0,57735             | ∞   |
| Readout Electronics   | 0,5           | N              | 1          | 1           | 1            | 0,5                | 0,5                 | ∞   |
| Response Time   | 0             | R              | $\sqrt{3}$ | 1           | 1            | 0                  | 0                   | ∞   |
| Integration Time  | 1,4           | R              | $\sqrt{3}$ | 1           | 1            | 0,80829            | 0,80829             | ∞   |
| RF Ambient Conditions   | 3             | R              | $\sqrt{3}$ | 1           | 1            | 1,73205            | 1,73205             | ∞   |
| Probe Positioner Mechanical Tolerance   | 1,4           | R              | $\sqrt{3}$ | 1           | 1            | 0,80829            | 0,80829             | ∞   |
| Probe Positioning with respect to Phantom Shell                                 | 1,4           | R              | $\sqrt{3}$ | 1           | 1            | 0,80829            | 0,80829             | ∞   |
| Extrapolation, interpolation and Integration Algorithms for Max. SAR Evaluation | 2,3           | R              | $\sqrt{3}$ | 1           | 1            | 1,32791            | 1,32791             | ∞   |
| <b>Dipole</b>   |               |                |            |             |              |                    |                     |     |
| Dipole Axis to Liquid Distance  | 2             | N              | $\sqrt{3}$ | 1           | 1            | 1,1547             | 1,1547              | N-1 |
| Input Power and SAR drift measurement   | 5             | R              | $\sqrt{3}$ | 1           | 1            | 2,88675            | 2,88675             | ∞   |
| <b>Phantom and Tissue Parameters</b>  |               |                |            |             |              |                    |                     |     |
| Phantom Uncertainty (shape and thickness tolerances)                            | 4             | R              | $\sqrt{3}$ | 1           | 1            | 2,3094             | 2,3094              | ∞   |
| Liquid Conductivity - deviation from target values                              | 5             | R              | $\sqrt{3}$ | 0,64        | 0,43         | 1,84752            | 1,2413              | ∞   |
| Liquid Conductivity - measurement uncertainty                                   | 4             | N              | 1          | 0,64        | 0,43         | 2,56               | 1,72                | M   |
| Liquid Permittivity - deviation from target values                              | 5             | R              | $\sqrt{3}$ | 0,6         | 0,49         | 1,73205            | 1,41451             | ∞   |
| Liquid Permittivity - measurement uncertainty                                   | 5             | N              | 1          | 0,6         | 0,49         | 3                  | 2,45                | M   |
| Combined Standard Uncertainty   |               | RSS            |            |             |              | 9.6671             | 9.1646              |     |
| Expanded Uncertainty (95% CONFIDENCE INTERVAL)                                  |               | k              |            |             |              | 19.3342            | 18.3292             |     |

| UNCERTAINTY EVALUATION FOR HANDSET SAR TEST                                     |               |                |            |                 |                 |                       |                        |       |
|---|---------------|----------------|------------|-----------------|-----------------|-----------------------|------------------------|-------|
| Uncertainty Component   | Tol.<br>(± %) | Prob.<br>Dist. | Div.       | $c_i$<br>(1 g)  | $c_i$<br>(10 g) | 1 g<br>$u_i$<br>(± %) | 10 g<br>$u_i$<br>(± %) | $v_i$ |
| <b>Measurement System</b>   |               |                |            |                 |                 |                       |                        |       |
| Probe Calibration   | 5,8           | N              | 1          | 1               | 1               | 5,8                   | 5,8                    | ∞     |
| Axial Isotropy  | 3,5           | R              | $\sqrt{3}$ | $(1-c_p)^{1/2}$ | $(1-c_p)^{1/2}$ | 1,43                  | 1,43                   | ∞     |
| Hemispherical Isotropy  | 5,9           | R              | $\sqrt{3}$ | $\sqrt{C_p}$    | $\sqrt{C_p}$    | 2,41                  | 2,41                   | ∞     |
| Boundary Effect   | 1             | R              | $\sqrt{3}$ | 1               | 1               | 0,58                  | 0,58                   | ∞     |
| Linearity   | 4,7           | R              | $\sqrt{3}$ | 1               | 1               | 2,71                  | 2,71                   | ∞     |
| System Detection Limits   | 1             | R              | $\sqrt{3}$ | 1               | 1               | 0,58                  | 0,58                   | ∞     |
| Readout Electronics   | 0,5           | N              | 1          | 1               | 1               | 0,50                  | 0,50                   | ∞     |
| Response Time   | 0             | R              | $\sqrt{3}$ | 1               | 1               | 0,00                  | 0,00                   | ∞     |
| Integration Time  | 1,4           | R              | $\sqrt{3}$ | 1               | 1               | 0,81                  | 0,81                   | ∞     |
| RF Ambient Conditions   | 3             | R              | $\sqrt{3}$ | 1               | 1               | 1,73                  | 1,73                   | ∞     |
| Probe Positioner Mechanical Tolerance   | 1,4           | R              | $\sqrt{3}$ | 1               | 1               | 0,81                  | 0,81                   | ∞     |
| Probe Positioning with respect to Phantom Shell                                 | 1,4           | R              | $\sqrt{3}$ | 1               | 1               | 0,81                  | 0,81                   | ∞     |
| Extrapolation, interpolation and Integration Algorithms for Max. SAR Evaluation | 2,3           | R              | $\sqrt{3}$ | 1               | 1               | 1,33                  | 1,33                   | ∞     |
| <b>Test sample Related</b>  |               |                |            |                 |                 |                       |                        |       |
| Test Sample Positioning   | 2,6           | N              | 1          | 1               | 1               | 2,60                  | 2,60                   | N-1   |
| Device Holder Uncertainty   | 3             | N              | 1          | 1               | 1               | 3,00                  | 3,00                   | N-1   |
| Output Power Variation - SAR drift measurement                                  | 5             | R              | $\sqrt{3}$ | 1               | 1               | 2,89                  | 2,89                   | ∞     |
| <b>Phantom and Tissue Parameters</b>  |               |                |            |                 |                 |                       |                        |       |
| Phantom Uncertainty (shape and thickness tolerances)                            | 4             | R              | $\sqrt{3}$ | 1               | 1               | 2,31                  | 2,31                   | ∞     |
| Liquid Conductivity - deviation from target values                              | 5             | R              | $\sqrt{3}$ | 0,64            | 0,43            | 1,85                  | 1,24                   | ∞     |
| Liquid Conductivity - measurement uncertainty                                   | 4             | N              | 1          | 0,64            | 0,43            | 2,56                  | 1,72                   | M     |
| Liquid Permittivity - deviation from target values                              | 5             | R              | $\sqrt{3}$ | 0,6             | 0,49            | 1,73                  | 1,41                   | ∞     |
| Liquid Permittivity - measurement uncertainty                                   | 5             | N              | 1          | 0,6             | 0,49            | 3,00                  | 2,45                   | M     |
| Combined Standard Uncertainty   |               | RSS            |            |                 |                 | 10.39                 | 9.92                   |       |
| Expanded Uncertainty (95% CONFIDENCE INTERVAL)                                  |               | k              |            |                 |                 | 20.78                 | 19.84                  |       |

## 12 Output Power Verification

### Test Condition:

1. Conducted Measurement  
EUT was set for low, mid, high channel with modulated mode and highest RF output power.  
The base station simulator was connected to the antenna terminal.
2. Conducted Emissions Measurement Uncertainty  
All test measurements carried out are traceable to national standards. The uncertainty of the measurement at a confidence level of approximately 95% (in the case where distributions are normal), with a coverage factor of 2, in the range 30MHz – 40GHz is  $\pm 1.5$ dB.
3. Environmental Conditions  

|                      |          |
|----------------------|----------|
| Temperature          | 21.8°C   |
| Relative Humidity    | 48.3%    |
| Atmospheric Pressure | 1019mbar |
4. Test Date : 2019-01-10  
Tested By : Andy Feng

### Test Procedures:

#### Vehicle VIN Checking Terminal radio output power measurement

1. The transmitter output port was connected to base station emulator.
2. Establish communication link between emulator and EUT and set EUT to operate at maximum output power all the time.
3. Select lowest, middle, and highest channels for each band and different possible test mode.
4. Measure the conducted peak burst power and conducted average burst power from EUT antenna port.

#### Other radio output power measurement

The output power was measured using power meter at low, mid, and high channels.

#### Remark 1:

The power verification has been verified and it is within the accepted tolerances.

**Test Result:****WIFI Mode (2.4G)**

| Mode          | Channel number | Frequency (MHz) | Data rate(Mbps) | Average Output Power(dBm) | Average Tune up limited(dBm) |
|---------------|----------------|-----------------|-----------------|---------------------------|------------------------------|
| 802.11b       | 1              | 2412            | 1               | 20.93                     | 20.5±1                       |
|               | 6              | 2437            | 1               | 21.27                     | 20.5±1                       |
|               | 11             | 2462            | 1               | 20.72                     | 20.5±1                       |
| 802.11g       | 1              | 2412            | 6               | 19.06                     | 19.0±1                       |
|               | 6              | 2437            | 6               | 19.37                     | 19.0±1                       |
|               | 11             | 2462            | 6               | 19.51                     | 19.0±1                       |
| 802.11n(HT20) | 1              | 2412            | MCS0            | 18.96                     | 19.0±1                       |
|               | 6              | 2437            | MCS0            | 19.71                     | 19.0±1                       |
|               | 11             | 2462            | MCS0            | 18.97                     | 19.±1                        |
| 802.11n(HT40) | 3              | 2422            | MCS0            | 17.04                     | 17.0±1                       |
|               | 6              | 2437            | MCS0            | 16.73                     | 17.0±1                       |
|               | 9              | 2452            | MCS0            | 16.71                     | 17.0±1                       |

### 13 Exposure Conditions Consideration

EUT antenna location:



| Distance of EUT antenna-to-edge/surface(mm),<br>Test distance:0mm |           |            |           |            |          |             |
|---|-----------|------------|-----------|------------|----------|-------------|
| Antennas  | Back side | Front side | Left Edge | Right Edge | Top Edge | Bottom Edge |
| WLAN  | 22        | 11         | 3         | 99         | 153      | 49          |

| Test distance:0mm |           |            |           |            |          |             |
|-------------------|-----------|------------|-----------|------------|----------|-------------|
| Antennas          | Back side | Front side | Left Edge | Right Edge | Top Edge | Bottom Edge |
| WLAN              | YES       | YES        | YES       | NO         | NO       | NO          |

Note:

1. Body SAR assessments are required.
2. Per KDB 447498 D01v06, for handsets the test separation distance is determined by the smallest distance between the outer surface of the device and the user, which is 0 mm for body SAR.

## RF Exposure

### Standard Requirement:

According to §15.247 (i) and §1.1307(b)(1), systems operating under the provisions of this section shall be operated in a manner that ensures that the public is not exposed to radio frequency energy level in excess of the Commission's guidelines.

The 1-g and 10-g SAR test exclusion thresholds for 100 MHz to 6 GHz at *test separation distances*  $\leq 50$  mm are determined by:

$[(\text{max. power of channel, including tune-up tolerance, mW}) / (\text{min. test separation distance, mm})] \cdot [\sqrt{f_{\text{(GHz)}}}] \leq 3.0$  for 1-g SAR and  $\leq 7.5$  for 10-g extremity SAR,<sup>16</sup> where

- $f_{\text{(GHz)}}$  is the RF channel transmit frequency in GHz
- Power and distance are rounded to the nearest mW and mm before calculation<sup>17</sup>
- The result is rounded to one decimal place for comparison

The test exclusions are applicable only when the minimum *test separation distance* is  $\leq 50$  mm and for transmission frequencies between 100 MHz and 6 GHz. When the minimum *test separation distance* is  $< 5$  mm, a distance of 5 mm is applied to determine SAR test exclusion.

Routine SAR evaluation refers to that specifically required by § 2.1093, using measurements or computer simulation. When routine SAR evaluation is not required, portable transmitters with output power greater than the applicable low threshold require SAR evaluation to qualify for TCB approval.

**Exclusion Thresholds =  $P\sqrt{F} / D$**

P= Maximum turn-up power in mW

F= Channel frequency in GHz

D= Minimum test separation distance in mm

### Test Distance (5mm)

| Mode       | MAX Power (dBm) | Tune Up Power (dBm) | Max Tune Up Power (dBm) | Max Tune Up Power (mW) | Exclusion Thresholds | Limit |
|------------|-----------------|---------------------|-------------------------|------------------------|----------------------|-------|
| WIFI(2.4G) | 21.27           | 20.5±1              | 21.50                   | 141.25                 | 44.101               | 3     |

### Result:

SAR measurement for WIFI(2.4G) is required.



## 14 SAR Test Results

### Test Condition:

- SAR Measurement  
The distance between the EUT and the antenna of the emulator is more than 50 cm and the output power radiated from the emulator antenna is at least 30 dB less than the output power of EUT.
- Environmental Conditions
 

|                      |          |
|----------------------|----------|
| Temperature          | 23°C     |
| Relative Humidity    | 57%      |
| Atmospheric Pressure | 1019mbar |
- Test Date : 2019-01-10  
Tested By : Andy Feng

### Generally Test Procedures:

- Establish communication link between EUT and base station emulation by air link.
- Place the EUT in the selected test position. (Cheek, tilt or flat)
- Perform SAR testing at middle or highest output power channel under the selected test mode. If the measured 1-g SAR is  $\leq 0.8$  W/kg, then testing for the other channel will not be performed.
- When SAR is  $< 0.8$  W/kg, no repeated SAR measurement is required

### SAR Summary Test Result:

**Table 4: SAR Values of 2.4G WIFI**

| Test Positions        |            | Channel |      | Test Mode | Power(dBm)                 |                            | SAR 1g(W/Kg), Limit(1.6W/kg) |                     | Plot No. |
|-----------------------|------------|---------|------|-----------|----------------------------|----------------------------|------------------------------|---------------------|----------|
|                       |            | CH.     | MHz  |           | Maximum Turn-up Power(dBm) | Measured output power(dBm) | Measured SAR 1g(W/kg)        | Scaled SAR 1g(W/kg) |          |
| Body (0mm Separation) | Front side | Mid     | 2437 | DSSS      | 21.50                      | 21.27                      | 0.455                        | 0.48                | --       |
|                       | Back side  | Mid     | 2437 | DSSS      | 21.50                      | 21.27                      | 0.253                        | 0.27                | --       |
|                       | Left edge  | Mid     | 2437 | DSSS      | 21.50                      | 21.27                      | 0.820                        | 0.86                | --       |
|                       | Left edge  | Mid     | 2437 | DSSS      | 21.50                      | 21.27                      | 0.818                        | 0.86                | --       |
|                       | Left edge  | Low     | 2412 | DSSS      | 21.50                      | 20.93                      | 0.823                        | <b>0.94</b>         | <b>1</b> |
|                       | Left edge  | Low     | 2412 | DSSS      | 21.50                      | 20.93                      | 0.822                        | 0.94                | --       |

### Measurement variability consideration

Refer to FCC KDB 248227 section 5.2.1~5.2.2:

#### 802.11b DSSS SAR Test Requirements:

SAR is measured for 2.4 GHz 802.11b DSSS using either a fixed test position or, when applicable, the initial test position procedure.

SAR test reduction is determined according to the following:

1) When the reported SAR of the highest measured maximum output power channel (section 3.1) for the exposure configuration is  $\leq 0.8$  W/kg,

no further SAR testing is required for 802.11b DSSS in that exposure configuration.

2) When the reported SAR is  $> 0.8$  W/kg, SAR is required for that exposure configuration using the next highest measured output power channel. When any reported SAR is  $> 1.2$  W/kg,

SAR is required for the third channel; i.e., all channels require testing.

#### 2.4 GHz 802.11g/n OFDM SAR Test Exclusion Requirements

When SAR measurement is required for 2.4 GHz 802.11g/n OFDM configurations, the measurement and test reduction procedures for OFDM are applied (section 5.3).

SAR is not required for the following 2.4 GHz OFDM conditions.

- 1) When KDB Publication 447498 SAR test exclusion applies to the OFDM configuration.
- 2) When the highest reported SAR for DSSS is adjusted by the ratio of OFDM to DSSS specified maximum output power and the adjusted SAR is  $\leq 1.2$  W/kg.

**Note:** 802.11 b DSSS SAR test is required. The highest reported SAR for DSSS\* the ratio of OFDM to DSSS(Max output power) is  $1.19 \times 0.966 = 1.150$  W/Kg  $< 1.2$  W/Kg. so the OFDM SAR test is not required.

**According to KDB 865664 D01v01r04 section 2.8.1, repeated measurements are required following the procedures as below:**

Repeated measurement is not required when the original highest measured SAR is  $< 0.80$  W/kg; steps 2) through 4) do not apply.

When the original highest measured SAR is  $\geq 0.80$  W/kg, repeat that measurement once.

Perform a second repeated measurement only if the ratio of largest to smallest SAR for the original and first repeated measurements is  $> 1.20$  or when the original or repeated measurement is  $\geq 1.45$  W/kg (~ 10% from the 1-g SAR limit).

Perform a third repeated measurement only if the original, first or second repeated measurement is  $\geq 1.5$  W/kg and the ratio of largest to smallest SAR for the original, first and second repeated measurements is  $> 1.20$ .

#### Repeated SAR

| Band     | Position  | Channel | Mode | measured SAR( W/kg) |              |       |              |       |
|----------|-----------|---------|------|---------------------|--------------|-------|--------------|-------|
|          |           |         |      | Original            | 1st Repeated |       | 2nd Repeated |       |
|          |           |         |      |                     | Value        | Ratio | Value        | Ratio |
| 802.11 b | Left edge | 2412    | DSSS | 0.823               | 0.822        | 1.001 | NA           | NA    |
| 802.11 b | Left edge | 2437    | DSSS | 0.820               | 0.818        | 1.002 | NA           | NA    |

## 15 SAR Measurement Reference

### References

1. **FCC 47 CFR Part 2 “Frequency Allocations and Radio Treaty Matters; General Rules and Regulations”**
2. **IEEE Std. C95.1-2005, “IEEE Standard for Safety Levels with Respect to Human Exposure to Radio Frequency Electromagnetic Fields, 3kHz to 300GHz”, 2005**
3. **IEEE Std. 1528-2013, “IEEE Recommended Practice for Determining the Peak Spatial-Average Specific Absorption Rate (SAR) in the Human Head from Wireless Communications Devices:Measurement Techniques”, June 2013**
4. **IEC 62209-2, “Human exposure to radio frequency fields from hand-held and body-mounted wireless communication devices—Human models, instrumentation, and procedures – Part 2: Procedure to determine the specific absorption rate(SAR) for wireless communication devices used in close proximity to the human body(frequency range of 30MHz to 6GHz)”, April 2010**
5. **FCC KDB 447498 D01 v06, “Mobile and Portable Device RF Exposure Procedures and Equipment Authorization Policies”, Oct 23<sup>th</sup>, 2015**
6. **FCC KDB 941225 D06 v02r01, “SAR Evaluation Procedures for Portable Devices with Wireless Router Capabilities”, Oct 23<sup>th</sup>, 2015**
7. **FCC KDB865664 D01 v01r04, “SAR Measurement Requirements 100MHz to 6GHz”, Aug 7<sup>th</sup>, 2015**
8. **FCC KDB865664 D02 v01r02, “RF Exposure Compliance Reporting and Documentation Considerations ”, Oct 23<sup>th</sup>, 2015**
9. **FCC KDB648474 D04 v01r03, “SAR Evaluation Considerations for Wireless Handsets”, Oct 23<sup>th</sup>, 2015**
10. **FCC KDB 248227 D01 v01r02, SAR Guidance for IEEE 802.11 (Wi-Fi) Transmitters, Oct 23<sup>th</sup>, 2015.**

**Maximum SAR measurement Plots**

**Plot 1:Mid channel (Body, Left edge)**

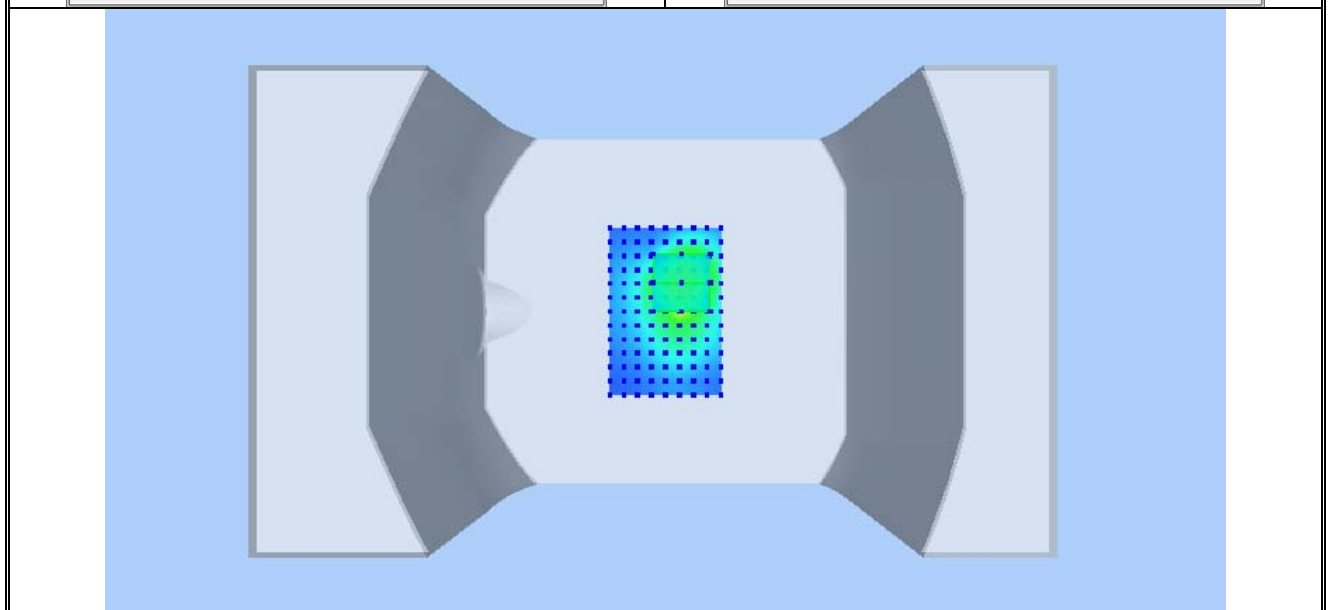
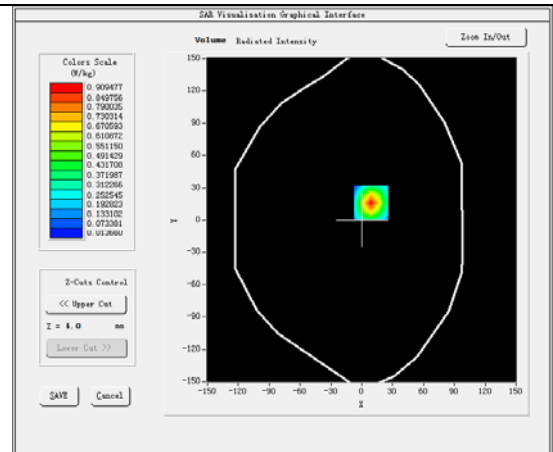
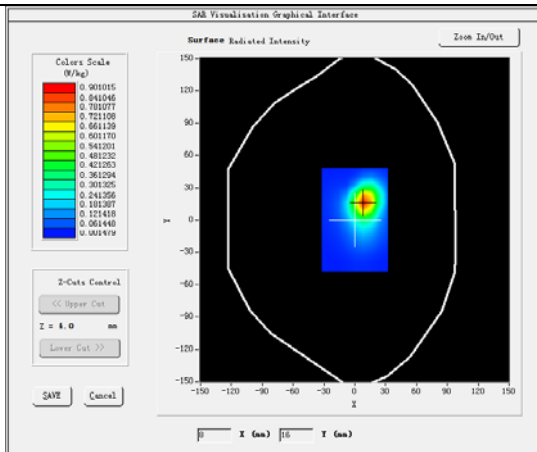
**Product Description: Professional Diagnostic Tool**

**Test Date: 2019-01-10**

|                                   |                            |
|-----------------------------------|----------------------------|
| Medium(liquid type)               | MSL_2450                   |
| Frequency (MHz)                   | 2437.0000                  |
| Relative permittivity (real part) | 52.01                      |
| Conductivity (S/m)                | 1.96                       |
| Signal                            | Duty cycle: 1:1            |
| E-Field Probe                     | SN 07/15 EP247             |
| Conversion Factor                 | 5.80                       |
| Area Scan                         | dx=8mm dy=8mm              |
| Zoom Scan                         | 5x5x7,dx=8mm dy=8mm dz=5mm |
| Variation (%)                     | -0.05                      |
| SAR 10g (W/Kg)                    | 0.388479                   |
| SAR 1g (W/Kg)                     | 0.822654                   |

**SURFACE SAR**

**VOLUME SAR**



## 16 Calibration Reports-Probe and Dipole



### COMOSAR E-Field Probe Calibration Report

Ref: ACR.154.5.18.SATU.A

**WALTEK SERVICES (SHENZHEN) CO.,  
LTD**  
**1/F, FUKANGTAI BUILDING, WEST BAIMA  
ROAD,SONGGANG STREET, BAOAN DISTRICT  
SHENZHEN (518105), CHINA**  
**MVG COMOSAR DOSIMETRIC E-FIELD PROBE**  
**SERIAL NO.: SN 07/15 EP247**

**Calibrated at MVG US**  
**2105 Barrett Park Dr. - Kennesaw, GA 30144**



**09/07/2018**

*Summary:*

This document presents the method and results from an accredited COMOSAR Dosimetric E-Field Probe calibration performed in MVG USA using the CALISAR / CALIBAIR test bench, for use with a COMOSAR system only. All calibration results are traceable to national metrology institutions.



## COMOSAR E-FIELD PROBE CALIBRATION REPORT

Ref: ACR.154.5.18.SATU.A

|                      | <i>Name</i>   | <i>Function</i> | <i>Date</i> | <i>Signature</i>     |
|----------------------|---------------|-----------------|-------------|----------------------|
| <i>Prepared by :</i> | Jérôme LUC    | Product Manager | 9/7/2018    | <i>JS</i>            |
| <i>Checked by :</i>  | Jérôme LUC    | Product Manager | 9/7/2018    | <i>JS</i>            |
| <i>Approved by :</i> | Kim RUTKOWSKI | Quality Manager | 9/7/2018    | <i>Kim Rutkowski</i> |

|                       | <i>Customer Name</i>                 |
|-----------------------|--------------------------------------|
| <i>Distribution :</i> | Waltek Services<br>(Shenzhen)Co.,Ltd |

| <i>Issue</i> | <i>Date</i> | <i>Modifications</i> |
|--------------|-------------|----------------------|
| A            | 9/7/2018    | Initial release      |
|              |             |                      |
|              |             |                      |

Page: 2/9

*This document shall not be reproduced, except in full or in part, without the written approval of MVG.  
The information contained herein is to be used only for the purpose for which it is submitted and is not to  
be released in whole or part without written approval of MVG.*



## COMOSAR E-FIELD PROBE CALIBRATION REPORT

Ref: ACR.154.5.18.SATU.A

## TABLE OF CONTENTS

|     |                                       |   |
|-----|---------------------------------------|---|
| 1   | Device Under Test .....               | 4 |
| 2   | Product Description .....             | 4 |
| 2.1 | General Information .....             | 4 |
| 3   | Measurement Method .....              | 4 |
| 3.1 | Linearity .....                       | 4 |
| 3.2 | Sensitivity .....                     | 5 |
| 3.3 | Lower Detection Limit .....           | 5 |
| 3.4 | Isotropy .....                        | 5 |
| 3.5 | Boundary Effect .....                 | 5 |
| 4   | Measurement Uncertainty .....         | 5 |
| 5   | Calibration Measurement Results ..... | 6 |
| 5.1 | Sensitivity in air .....              | 6 |
| 5.2 | Linearity .....                       | 7 |
| 5.3 | Sensitivity in liquid .....           | 7 |
| 5.4 | Isotropy .....                        | 8 |
| 6   | List of Equipment .....               | 9 |

Page: 3/9

*This document shall not be reproduced, except in full or in part, without the written approval of MVG.  
The information contained herein is to be used only for the purpose for which it is submitted and is not to be released in whole or part without written approval of MVG.*



## COMOSAR E-FIELD PROBE CALIBRATION REPORT

Ref. ACR.154.5.18.SATU.A

**1 DEVICE UNDER TEST**

| Device Under Test                        |   |
|--|---|
| Device Type                              | COMOSAR DOSIMETRIC E FIELD PROBE  |
| Manufacturer                             | MVG   |
| Model                                    | SSE5  |
| Serial Number                            | SN 07/15 EP247  |
| Product Condition (new / used)           | Used  |
| Frequency Range of Probe                 | 0.7GHz-3GHz   |
| Resistance of Three Dipoles at Connector | Dipole 1: R1=0.224 MΩ<br>Dipole 2: R2=0.234 MΩ<br>Dipole 3: R3=0.229 MΩ |

A yearly calibration interval is recommended.

**2 PRODUCT DESCRIPTION****2.1 GENERAL INFORMATION**

MVG's COMOSAR E field Probes are built in accordance to the IEEE 1528, OET 65 Bulletin C and CEI/IEC 62209 standards.



**Figure 1 – MVG COMOSAR Dosimetric E field Dipole**

|  |        |
|--|--------|
| Probe Length                               | 330 mm |
| Length of Individual Dipoles               | 4.5 mm |
| Maximum external diameter                  | 8 mm   |
| Probe Tip External Diameter                | 5 mm   |
| Distance between dipoles / probe extremity | 2.7 mm |

**3 MEASUREMENT METHOD**

The IEEE 1528, OET 65 Bulletin C, CENELEC EN50361 and CEI/IEC 62209 standards provide recommended practices for the probe calibrations, including the performance characteristics of interest and methods by which to assess their affect. All calibrations / measurements performed meet the fore mentioned standards.

**3.1 LINEARITY**

The evaluation of the linearity was done in free space using the waveguide, performing a power sweep to cover the SAR range 0.01W/kg to 100W/kg.

Page: 4/9

*This document shall not be reproduced, except in full or in part, without the written approval of MVG.  
The information contained herein is to be used only for the purpose for which it is submitted and is not to be released in whole or part without written approval of MVG.*





## COMOSAR E-FIELD PROBE CALIBRATION REPORT

Ref: ACR.154.5.18.SATU.A

### 3.2 SENSITIVITY

The sensitivity factors of the three dipoles were determined using a two step calibration method (air and tissue simulating liquid) using waveguides as outlined in the standards.

### 3.3 LOWER DETECTION LIMIT

The lower detection limit was assessed using the same measurement set up as used for the linearity measurement. The required lower detection limit is 10 mW/kg.

### 3.4 ISOTROPY

The axial isotropy was evaluated by exposing the probe to a reference wave from a standard dipole with the dipole mounted under the flat phantom in the test configuration suggested for system validations and checks. The probe was rotated along its main axis from 0 - 360 degrees in 15 degree steps. The hemispherical isotropy is determined by inserting the probe in a thin plastic box filled with tissue-equivalent liquid, with the plastic box illuminated with the fields from a half wave dipole. The dipole is rotated about its axis (0°–180°) in 15° increments. At each step the probe is rotated about its axis (0°–360°).

### 3.5 BOUNDARY EFFECT

The boundary effect is defined as the deviation between the SAR measured data and the expected exponential decay in the liquid when the probe is oriented normal to the interface. To evaluate this effect, the liquid filled flat phantom is exposed to fields from either a reference dipole or waveguide. With the probe normal to the phantom surface, the peak spatial average SAR is measured and compared to the analytical value at the surface.

## 4 MEASUREMENT UNCERTAINTY

The guidelines outlined in the IEEE 1528, OET 65 Bulletin C, CENELEC EN50361 and CEI/IEC 62209 standards were followed to generate the measurement uncertainty associated with an E-field probe calibration using the waveguide technique. All uncertainties listed below represent an expanded uncertainty expressed at approximately the 95% confidence level using a coverage factor of k=2, traceable to the Internationally Accepted Guides to Measurement Uncertainty.

| Uncertainty analysis of the probe calibration in waveguide |                       |                          |            |    |                          |
|--|-----------------------|--------------------------|------------|----|--------------------------|
| ERROR SOURCES  | Uncertainty value (%) | Probability Distribution | Divisor    | ci | Standard Uncertainty (%) |
| Incident or forward power                                  | 3.00%                 | Rectangular              | $\sqrt{3}$ | 1  | 1.732%                   |
| Reflected power  | 3.00%                 | Rectangular              | $\sqrt{3}$ | 1  | 1.732%                   |
| Liquid conductivity  | 5.00%                 | Rectangular              | $\sqrt{3}$ | 1  | 2.887%                   |
| Liquid permittivity  | 4.00%                 | Rectangular              | $\sqrt{3}$ | 1  | 2.309%                   |
| Field homogeneity  | 3.00%                 | Rectangular              | $\sqrt{3}$ | 1  | 1.732%                   |
| Field probe positioning                                    | 5.00%                 | Rectangular              | $\sqrt{3}$ | 1  | 2.887%                   |

Page: 5/9

*This document shall not be reproduced, except in full or in part, without the written approval of MVG.  
The information contained herein is to be used only for the purpose for which it is submitted and is not to be released in whole or part without written approval of MVG.*



## COMOSAR E-FIELD PROBE CALIBRATION REPORT

Ref: ACR.154.5.18.SATU.A

|  |       |             |            |   |        |
|--|-------|-------------|------------|---|--------|
| Field probe linearity                                      | 3.00% | Rectangular | $\sqrt{3}$ | 1 | 1.732% |
| <b>Combined standard uncertainty</b>                       |       |             |            |   | 5.831% |
| <b>Expanded uncertainty</b><br>95 % confidence level k = 2 |       |             |            |   | 12.0%  |

## 5 CALIBRATION MEASUREMENT RESULTS

| Calibration Parameters |       |
|------------------------|-------|
| Liquid Temperature     | 21 °C |
| Lab Temperature        | 21 °C |
| Lab Humidity           | 45 %  |

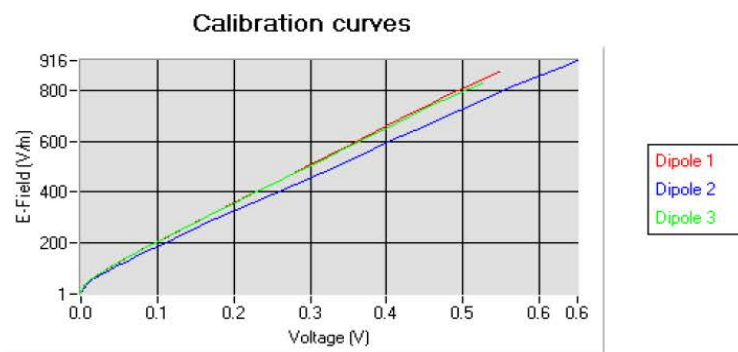
### 5.1 SENSITIVITY IN AIR

| Normx dipole<br>1 ( $\mu\text{V}/(\text{V}/\text{m})^2$ ) | Normy dipole<br>2 ( $\mu\text{V}/(\text{V}/\text{m})^2$ ) | Normz dipole<br>3 ( $\mu\text{V}/(\text{V}/\text{m})^2$ ) |
|---|---|---|
| 4.48  | 5.48  | 3.88  |

| DCP dipole 1<br>(mV) | DCP dipole 2<br>(mV) | DCP dipole 3<br>(mV) |
|----------------------|----------------------|----------------------|
| 105                  | 103                  | 114                  |

Calibration curves  $e_i=f(V)$  ( $i=1,2,3$ ) allow to obtain H-field value using the formula:

$$E = \sqrt{E_1^2 + E_2^2 + E_3^2}$$



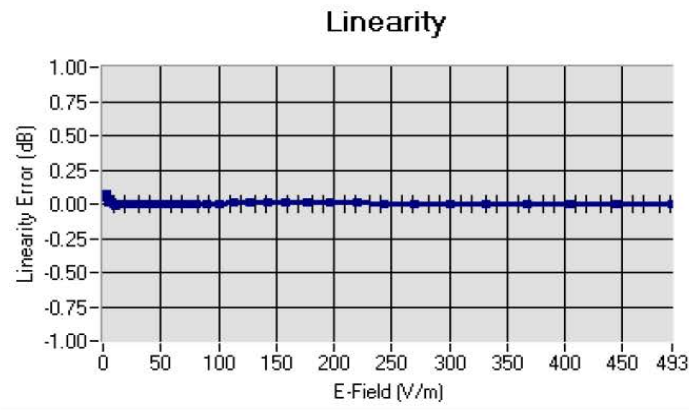
Page: 6/9

*This document shall not be reproduced, except in full or in part, without the written approval of MVG.  
The information contained herein is to be used only for the purpose for which it is submitted and is not to be released in whole or part without written approval of MVG.*



## COMOSAR E-FIELD PROBE CALIBRATION REPORT

Ref. ACR.154.5.18.SATU.A

5.2 LINEARITYLinearity:  $\pm 1.62\%$  ( $\pm 0.07\text{dB}$ )5.3 SENSITIVITY IN LIQUID

| Liquid | Frequency<br>(MHz $\pm$ 100MHz) | Permittivity | Epsilon(S/m) | ConvF |
|--------|---------------------------------|--------------|--------------|-------|
| HL750  | 750                             | 41.90        | 0.89         | 6.99  |
| BL750  | 750                             | 55.50        | 0.96         | 7.28  |
| HL850  | 850                             | 42.59        | 0.90         | 6.93  |
| BL850  | 850                             | 53.19        | 0.97         | 7.13  |
| HL900  | 900                             | 42.05        | 0.98         | 6.18  |
| BL900  | 900                             | 56.41        | 1.08         | 6.41  |
| HL1800 | 1800                            | 41.82        | 1.38         | 5.84  |
| BL1800 | 1800                            | 53.00        | 1.52         | 6.06  |
| HL1900 | 1900                            | 40.38        | 1.41         | 6.35  |
| BL1900 | 1900                            | 53.93        | 1.55         | 6.55  |
| HL2000 | 2000                            | 40.12        | 1.43         | 5.76  |
| BL2000 | 2000                            | 53.65        | 1.54         | 5.88  |
| HL2450 | 2450                            | 38.34        | 1.80         | 5.64  |
| BL2450 | 2450                            | 52.70        | 1.94         | 5.80  |
| HL2600 | 2600                            | 38.16        | 1.93         | 5.37  |
| BL2600 | 2600                            | 51.55        | 2.21         | 5.58  |

LOWER DETECTION LIMIT: 7mW/kg

Page: 7/9

*This document shall not be reproduced, except in full or in part, without the written approval of MVG.  
The information contained herein is to be used only for the purpose for which it is submitted and is not to be released in whole or part without written approval of MVG.*



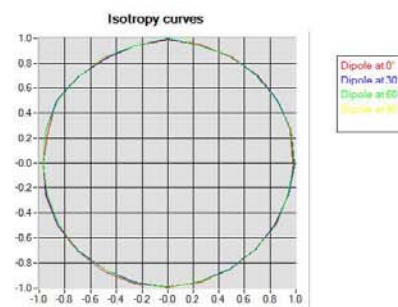
## COMOSAR E-FIELD PROBE CALIBRATION REPORT

Ref: ACR.154.5.18.SATU.A

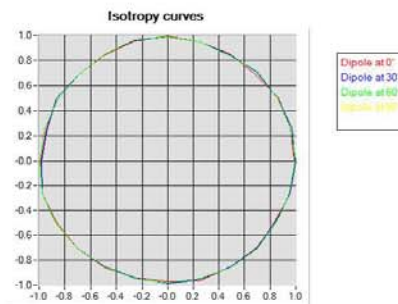
## 5.4 ISOTROPY

**HL900 MHz**

- Axial isotropy: 0.04 dB
- Hemispherical isotropy: 0.05 dB

**HL1800 MHz**

- Axial isotropy: 0.04 dB
- Hemispherical isotropy: 0.06 dB



Page: 8/9

*This document shall not be reproduced, except in full or in part, without the written approval of MVG.  
The information contained herein is to be used only for the purpose for which it is submitted and is not to  
be released in whole or part without written approval of MVG.*



## COMOSAR E-FIELD PROBE CALIBRATION REPORT

Ref: ACR.154.5.18.SATU.A

## 6 LIST OF EQUIPMENT

| Equipment Summary Sheet       |                      |                    |   |   |
|-------------------------------|----------------------|--------------------|---|---|
| Equipment Description         | Manufacturer / Model | Identification No. | Current Calibration Date                      | Next Calibration Date                         |
| Flat Phantom                  | MVG                  | SN-20/09-SAM71     | Validated. No cal required.                   | Validated. No cal required.                   |
| COMOSAR Test Bench            | Version 3            | NA                 | Validated. No cal required.                   | Validated. No cal required.                   |
| Network Analyzer              | Rhode & Schwarz ZVA  | SN100132           | 02/2016                                       | 02/2019                                       |
| Reference Probe               | MVG                  | EP 94 SN 37/08     | 10/2017                                       | 10/2018                                       |
| Multimeter                    | Keithley 2000        | 1188656            | 12/2016                                       | 12/2019                                       |
| Signal Generator              | Agilent E4438C       | MY49070581         | 12/2016                                       | 12/2019                                       |
| Amplifier                     | Aethercomm           | SN 046             | Characterized prior to test. No cal required. | Characterized prior to test. No cal required. |
| Power Meter                   | HP E4418A            | US38261498         | 12/2016                                       | 12/2019                                       |
| Power Sensor                  | HP ECP-E26A          | US37181460         | 12/2016                                       | 12/2019                                       |
| Directional Coupler           | Narda 4216-20        | 01386              | Characterized prior to test. No cal required. | Characterized prior to test. No cal required. |
| Waveguide                     | Mega Industries      | 069Y7-158-13-712   | Validated. No cal required.                   | Validated. No cal required.                   |
| Waveguide Transition          | Mega Industries      | 069Y7-158-13-701   | Validated. No cal required.                   | Validated. No cal required.                   |
| Waveguide Termination         | Mega Industries      | 069Y7-158-13-701   | Validated. No cal required.                   | Validated. No cal required.                   |
| Temperature / Humidity Sensor | Control Company      | 11-661-9           | 8/2018  | 8/2021  |

Page: 9/9

*This document shall not be reproduced, except in full or in part, without the written approval of MVG.  
The information contained herein is to be used only for the purpose for which it is submitted and is not to be released in whole or part without written approval of MVG.*



## SAR Reference Dipole Calibration Report

Ref : ACR.93.8.18.SATU.A

**WALTEK SERVICES(SHENZHEN) CO.,LTD**  
**1/F., FUKANGTAI BUILDING,WEST BAIMA ROAD,**  
**SONGGANG STREET**  
**BAOAN DISTRICT,SHENZHEN GUANGDONG**  
**518105,CHINA**  
**MVG COMOSAR REFERENCE DIPOLE**  
**FREQUENCY: 2450 MHZ**  
**SERIAL NO.: SN 09/15 DIP 2G450-357**

**Calibrated at MVG US**  
**2105 Barrett Park Dr. - Kennesaw, GA 30144**



**Calibration Date: 02/28/2018**

*Summary:*

This document presents the method and results from an accredited SAR reference dipole calibration performed in MVG USA using the COMOSAR test bench. All calibration results are traceable to national metrology institutions.





## SAR REFERENCE DIPOLE CALIBRATION REPORT

Ref: ACR.93.8.18.SATU.A

|                      | <i>Name</i>   | <i>Function</i> | <i>Date</i> | <i>Signature</i>     |
|----------------------|---------------|-----------------|-------------|----------------------|
| <i>Prepared by :</i> | Jérôme LUC    | Product Manager | 3/14/2018   | <i>JS</i>            |
| <i>Checked by :</i>  | Jérôme LUC    | Product Manager | 3/14/2018   | <i>JS</i>            |
| <i>Approved by :</i> | Kim RUTKOWSKI | Quality Manager | 3/14/2018   | <i>Kim Rutkowski</i> |

|                       | <i>Customer Name</i>                     |
|-----------------------|--|
| <i>Distribution :</i> | Waltek Services<br>(Shenzhen)Co.,<br>Ltd |

| <i>Issue</i> | <i>Date</i> | <i>Modifications</i> |
|--------------|-------------|----------------------|
| A            | 3/14/2018   | Initial release      |
|              |             |                      |
|              |             |                      |
|              |             |                      |

Page: 2/11

*This document shall not be reproduced, except in full or in part, without the written approval of MVG.  
The information contained herein is to be used only for the purpose for which it is submitted and is not to  
be released in whole or part without written approval of MVG.*



## TABLE OF CONTENTS

|     |  |    |
|-----|--|----|
| 1   | Introduction.....                              | 4  |
| 2   | Device Under Test .....                        | 4  |
| 3   | Product Description .....                      | 4  |
| 3.1 | General Information .....                      | 4  |
| 4   | Measurement Method .....                       | 5  |
| 4.1 | Return Loss Requirements .....                 | 5  |
| 4.2 | Mechanical Requirements .....                  | 5  |
| 5   | Measurement Uncertainty .....                  | 5  |
| 5.1 | Return Loss .....                              | 5  |
| 5.2 | Dimension Measurement .....                    | 5  |
| 5.3 | Validation Measurement .....                   | 5  |
| 6   | Calibration Measurement Results .....          | 6  |
| 6.1 | Return Loss and Impedance In Head Liquid ..... | 6  |
| 6.2 | Return Loss and Impedance In Body Liquid ..... | 6  |
| 6.3 | Mechanical Dimensions .....                    | 6  |
| 7   | Validation measurement .....                   | 7  |
| 7.1 | Head Liquid Measurement .....                  | 7  |
| 7.2 | SAR Measurement Result With Head Liquid .....  | 8  |
| 7.3 | Body Liquid Measurement .....                  | 9  |
| 7.4 | SAR Measurement Result With Body Liquid .....  | 10 |
| 8   | List of Equipment .....                        | 11 |

Page: 3/11

*This document shall not be reproduced, except in full or in part, without the written approval of MVG.  
The information contained herein is to be used only for the purpose for which it is submitted and is not to be released in whole or part without written approval of MVG.*





## 1 INTRODUCTION

This document contains a summary of the requirements set forth by the IEEE 1528, FCC KDBs and CEI/IEC 62209 standards for reference dipoles used for SAR measurement system validations and the measurements that were performed to verify that the product complies with the fore mentioned standards.

## 2 DEVICE UNDER TEST

| Device Under Test              |                                   |
|--------------------------------|-----------------------------------|
| Device Type                    | COMOSAR 2450 MHz REFERENCE DIPOLE |
| Manufacturer                   | MVG                               |
| Model                          | SID2450                           |
| Serial Number                  | SN 09/15 DIP 2G450-357            |
| Product Condition (new / used) | Used                              |

A yearly calibration interval is recommended.

## 3 PRODUCT DESCRIPTION

### 3.1 GENERAL INFORMATION

MVG's COMOSAR Validation Dipoles are built in accordance to the IEEE 1528, FCC KDBs and CEI/IEC 62209 standards. The product is designed for use with the COMOSAR test bench only.



**Figure 1** – MVG COMOSAR Validation Dipole

Page: 4/11

*This document shall not be reproduced, except in full or in part, without the written approval of MVG.  
The information contained herein is to be used only for the purpose for which it is submitted and is not to be released in whole or part without written approval of MVG.*



#### 4 MEASUREMENT METHOD

The IEEE 1528, FCC KDBs and CEI/IEC 62209 standards provide requirements for reference dipoles used for system validation measurements. The following measurements were performed to verify that the product complies with the fore mentioned standards.

##### 4.1 RETURN LOSS REQUIREMENTS

The dipole used for SAR system validation measurements and checks must have a return loss of -20 dB or better. The return loss measurement shall be performed against a liquid filled flat phantom, with the phantom constructed as outlined in the fore mentioned standards.

##### 4.2 MECHANICAL REQUIREMENTS

The IEEE Std. 1528 and CEI/IEC 62209 standards specify the mechanical components and dimensions of the validation dipoles, with the dimensions frequency and phantom shell thickness dependent. The COMOSAR test bench employs a 2 mm phantom shell thickness therefore the dipoles sold for use with the COMOSAR test bench comply with the requirements set forth for a 2 mm phantom shell thickness.

#### 5 MEASUREMENT UNCERTAINTY

All uncertainties listed below represent an expanded uncertainty expressed at approximately the 95% confidence level using a coverage factor of k=2, traceable to the Internationally Accepted Guides to Measurement Uncertainty.

##### 5.1 RETURN LOSS

The following uncertainties apply to the return loss measurement:

| Frequency band | Expanded Uncertainty on Return Loss |
|----------------|-------------------------------------|
| 400-6000MHz    | 0.1 dB                              |

##### 5.2 DIMENSION MEASUREMENT

The following uncertainties apply to the dimension measurements:

| Length (mm) | Expanded Uncertainty on Length |
|-------------|--------------------------------|
| 3 - 300     | 0.05 mm                        |

##### 5.3 VALIDATION MEASUREMENT

The guidelines outlined in the IEEE 1528, FCC KDBs, CENELEC EN50361 and CEI/IEC 62209 standards were followed to generate the measurement uncertainty for validation measurements.

| Scan Volume | Expanded Uncertainty |
|-------------|----------------------|
| 1 g         | 20.3 %               |

Page: 5/11

*This document shall not be reproduced, except in full or in part, without the written approval of MVG.  
The information contained herein is to be used only for the purpose for which it is submitted and is not to be released in whole or part without written approval of MVG.*



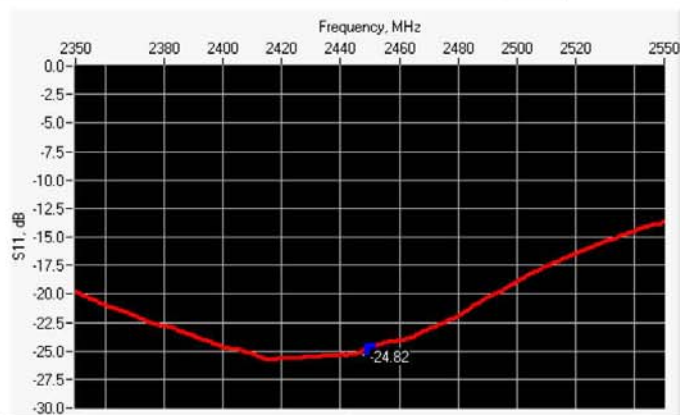
SAR REFERENCE DIPOLE CALIBRATION REPORT

Ref: ACR.93.8.18.SATU.A

|      |        |
|------|--------|
| 10 g | 20.1 % |
|------|--------|

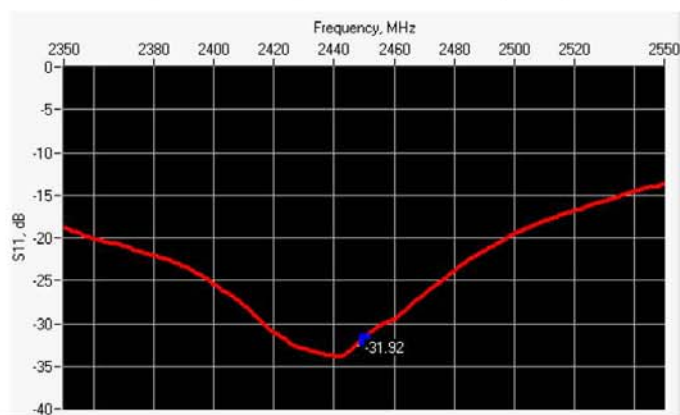
6 CALIBRATION MEASUREMENT RESULTS

6.1 RETURN LOSS AND IMPEDANCE IN HEAD LIQUID



| Frequency (MHz) | Return Loss (dB) | Requirement (dB) | Impedance       |
|-----------------|------------------|------------------|-----------------|
| 2450            | -24.82           | -20              | 44.3 Ω + 0.2 jΩ |

6.2 RETURN LOSS AND IMPEDANCE IN BODY LIQUID



| Frequency (MHz) | Return Loss (dB) | Requirement (dB) | Impedance       |
|-----------------|------------------|------------------|-----------------|
| 2450            | -31.92           | -20              | 47.5 Ω - 0.4 jΩ |

6.3 MECHANICAL DIMENSIONS

| Frequency MHz | L mm       |          | h mm       |          | d mm      |          |
|---------------|------------|----------|------------|----------|-----------|----------|
|               | required   | measured | required   | measured | required  | measured |
| 300           | 420.0 ±1 % |          | 250.0 ±1 % |          | 6.35 ±1 % |          |

*This document shall not be reproduced, except in full or in part, without the written approval of MVG. The information contained herein is to be used only for the purpose for which it is submitted and is not to be released in whole or part without written approval of MVG.*



## SAR REFERENCE DIPOLE CALIBRATION REPORT

Ref: ACR.93.8.18.SATU.A

|      |             |      |             |      |            |      |
|------|-------------|------|-------------|------|------------|------|
| 450  | 290.0 ±1 %. |      | 166.7 ±1 %. |      | 6.35 ±1 %. |      |
| 750  | 176.0 ±1 %. |      | 100.0 ±1 %. |      | 6.35 ±1 %. |      |
| 835  | 161.0 ±1 %. |      | 89.8 ±1 %.  |      | 3.6 ±1 %.  |      |
| 900  | 149.0 ±1 %. |      | 83.3 ±1 %.  |      | 3.6 ±1 %.  |      |
| 1450 | 89.1 ±1 %.  |      | 51.7 ±1 %.  |      | 3.6 ±1 %.  |      |
| 1500 | 80.5 ±1 %.  |      | 50.0 ±1 %.  |      | 3.6 ±1 %.  |      |
| 1640 | 79.0 ±1 %.  |      | 45.7 ±1 %.  |      | 3.6 ±1 %.  |      |
| 1750 | 75.2 ±1 %.  |      | 42.9 ±1 %.  |      | 3.6 ±1 %.  |      |
| 1800 | 72.0 ±1 %.  |      | 41.7 ±1 %.  |      | 3.6 ±1 %.  |      |
| 1900 | 68.0 ±1 %.  |      | 39.5 ±1 %.  |      | 3.6 ±1 %.  |      |
| 1950 | 66.3 ±1 %.  |      | 38.5 ±1 %.  |      | 3.6 ±1 %.  |      |
| 2000 | 64.5 ±1 %.  |      | 37.5 ±1 %.  |      | 3.6 ±1 %.  |      |
| 2100 | 61.0 ±1 %.  |      | 35.7 ±1 %.  |      | 3.6 ±1 %.  |      |
| 2300 | 55.5 ±1 %.  |      | 32.6 ±1 %.  |      | 3.6 ±1 %.  |      |
| 2450 | 51.5 ±1 %.  | PASS | 30.4 ±1 %.  | PASS | 3.6 ±1 %.  | PASS |
| 2600 | 48.5 ±1 %.  |      | 28.8 ±1 %.  |      | 3.6 ±1 %.  |      |
| 3000 | 41.5 ±1 %.  |      | 25.0 ±1 %.  |      | 3.6 ±1 %.  |      |
| 3500 | 37.0 ±1 %.  |      | 26.4 ±1 %.  |      | 3.6 ±1 %.  |      |
| 3700 | 34.7 ±1 %.  |      | 26.4 ±1 %.  |      | 3.6 ±1 %.  |      |

## 7 VALIDATION MEASUREMENT

The IEEE Std. 1528, FCC KDBs and CEI/IEC 62209 standards state that the system validation measurements must be performed using a reference dipole meeting the fore mentioned return loss and mechanical dimension requirements. The validation measurement must be performed against a liquid filled flat phantom, with the phantom constructed as outlined in the fore mentioned standards. Per the standards, the dipole shall be positioned below the bottom of the phantom, with the dipole length centered and parallel to the longest dimension of the flat phantom, with the top surface of the dipole at the described distance from the bottom surface of the phantom.

### 7.1 HEAD LIQUID MEASUREMENT

| Frequency<br>MHz | Relative permittivity ( $\epsilon_r$ ) |          | Conductivity ( $\sigma$ ) S/m |          |
|------------------|--|----------|-------------------------------|----------|
|                  | required                               | measured | required                      | measured |
| 300              | 45.3 ±5 %                              |          | 0.87 ±5 %                     |          |
| 450              | 43.5 ±5 %                              |          | 0.87 ±5 %                     |          |
| 750              | 41.9 ±5 %                              |          | 0.89 ±5 %                     |          |
| 835              | 41.5 ±5 %                              |          | 0.90 ±5 %                     |          |
| 900              | 41.5 ±5 %                              |          | 0.97 ±5 %                     |          |
| 1450             | 40.5 ±5 %                              |          | 1.20 ±5 %                     |          |
| 1500             | 40.4 ±5 %                              |          | 1.23 ±5 %                     |          |
| 1640             | 40.2 ±5 %                              |          | 1.31 ±5 %                     |          |
| 1750             | 40.1 ±5 %                              |          | 1.37 ±5 %                     |          |

Page: 7/11

*This document shall not be reproduced, except in full or in part, without the written approval of MVG.  
The information contained herein is to be used only for the purpose for which it is submitted and is not to be released in whole or part without written approval of MVG.*





## SAR REFERENCE DIPOLE CALIBRATION REPORT

Ref: ACR.93.8.18.SATU.A

|      |           |      |           |      |
|------|-----------|------|-----------|------|
| 1800 | 40.0 ±5 % |      | 1.40 ±5 % |      |
| 1900 | 40.0 ±5 % |      | 1.40 ±5 % |      |
| 1950 | 40.0 ±5 % |      | 1.40 ±5 % |      |
| 2000 | 40.0 ±5 % |      | 1.40 ±5 % |      |
| 2100 | 39.8 ±5 % |      | 1.49 ±5 % |      |
| 2300 | 39.5 ±5 % |      | 1.67 ±5 % |      |
| 2450 | 39.2 ±5 % | PASS | 1.80 ±5 % | PASS |
| 2600 | 39.0 ±5 % |      | 1.96 ±5 % |      |
| 3000 | 38.5 ±5 % |      | 2.40 ±5 % |      |
| 3500 | 37.9 ±5 % |      | 2.91 ±5 % |      |

## 7.2 SAR MEASUREMENT RESULT WITH HEAD LIQUID

The IEEE Std. 1528 and CEI/IEC 62209 standards state that the system validation measurements should produce the SAR values shown below (for phantom thickness of 2 mm), within the uncertainty for the system validation. All SAR values are normalized to 1 W forward power. In bracket, the measured SAR is given with the used input power.

|   |  |
|---|--|
| Software                                  | OPENSAR V4   |
| Phantom                                   | SN 20/09 SAM71   |
| Probe                                     | SN 18/11 EPG122  |
| Liquid                                    | Head Liquid Values: $\epsilon_p^s$ : 37.5 sigma : 1.80 |
| Distance between dipole center and liquid | 10.0 mm  |
| Area scan resolution                      | dx=8mm/dy=8mm  |
| Zoon Scan Resolution                      | dx=5mm/dy=5mm/dz=5mm                                   |
| Frequency                                 | 2450 MHz   |
| Input power                               | 20 dBm   |
| Liquid Temperature                        | 21 °C  |
| Lab Temperature                           | 21 °C  |
| Lab Humidity                              | 45 %   |

| Frequency<br>MHz | 1 g SAR (W/kg/W) |          | 10 g SAR (W/kg/W) |          |
|------------------|------------------|----------|-------------------|----------|
|                  | required         | measured | required          | measured |
| 300              | 2.85             |          | 1.94              |          |
| 450              | 4.58             |          | 3.06              |          |
| 750              | 8.49             |          | 5.55              |          |
| 835              | 9.56             |          | 6.22              |          |
| 900              | 10.9             |          | 6.99              |          |
| 1450             | 29               |          | 16                |          |
| 1500             | 30.5             |          | 16.8              |          |
| 1640             | 34.2             |          | 18.4              |          |
| 1750             | 36.4             |          | 19.3              |          |
| 1800             | 38.4             |          | 20.1              |          |

Page: 8/11

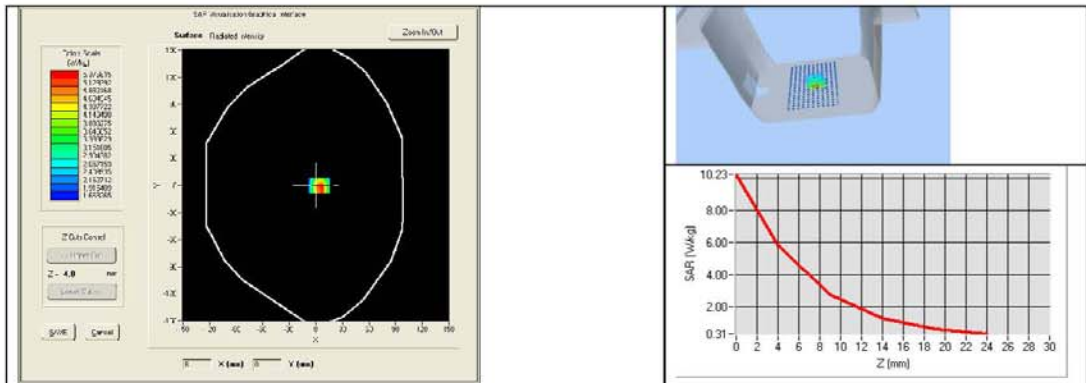
*This document shall not be reproduced, except in full or in part, without the written approval of MVG.  
The information contained herein is to be used only for the purpose for which it is submitted and is not to be released in whole or part without written approval of MVG.*



SAR REFERENCE DIPOLE CALIBRATION REPORT

Ref: ACR.93.8.18.SATU.A

|      |      |              |      |              |
|------|------|--------------|------|--------------|
| 1900 | 39.7 |              | 20.5 |              |
| 1950 | 40.5 |              | 20.9 |              |
| 2000 | 41.1 |              | 21.1 |              |
| 2100 | 43.6 |              | 21.9 |              |
| 2300 | 48.7 |              | 23.3 |              |
| 2450 | 52.4 | 54.31 (5.43) | 24   | 24.20 (2.42) |
| 2600 | 55.3 |              | 24.6 |              |
| 3000 | 63.8 |              | 25.7 |              |
| 3500 | 67.1 |              | 25   |              |
| 3700 | 67.4 |              | 24.2 |              |



7.3 BODY LIQUID MEASUREMENT

| Frequency MHz | Relative permittivity ( $\epsilon_r'$ ) |          | Conductivity ( $\sigma$ ) S/m |          |
|---------------|---|----------|-------------------------------|----------|
|               | required                                | measured | required                      | measured |
| 150           | 61.9 ±5 %                               |          | 0.80 ±5 %                     |          |
| 300           | 58.2 ±5 %                               |          | 0.92 ±5 %                     |          |
| 450           | 56.7 ±5 %                               |          | 0.94 ±5 %                     |          |
| 750           | 55.5 ±5 %                               |          | 0.96 ±5 %                     |          |
| 835           | 55.2 ±5 %                               |          | 0.97 ±5 %                     |          |
| 900           | 55.0 ±5 %                               |          | 1.05 ±5 %                     |          |
| 915           | 55.0 ±5 %                               |          | 1.06 ±5 %                     |          |
| 1450          | 54.0 ±5 %                               |          | 1.30 ±5 %                     |          |
| 1610          | 53.8 ±5 %                               |          | 1.40 ±5 %                     |          |
| 1800          | 53.3 ±5 %                               |          | 1.52 ±5 %                     |          |
| 1900          | 53.3 ±5 %                               |          | 1.52 ±5 %                     |          |
| 2000          | 53.3 ±5 %                               |          | 1.52 ±5 %                     |          |
| 2100          | 53.2 ±5 %                               |          | 1.62 ±5 %                     |          |

Page: 9/11

*This document shall not be reproduced, except in full or in part, without the written approval of MVG. The information contained herein is to be used only for the purpose for which it is submitted and is not to be released in whole or part without written approval of MVG.*



SAR REFERENCE DIPOLE CALIBRATION REPORT

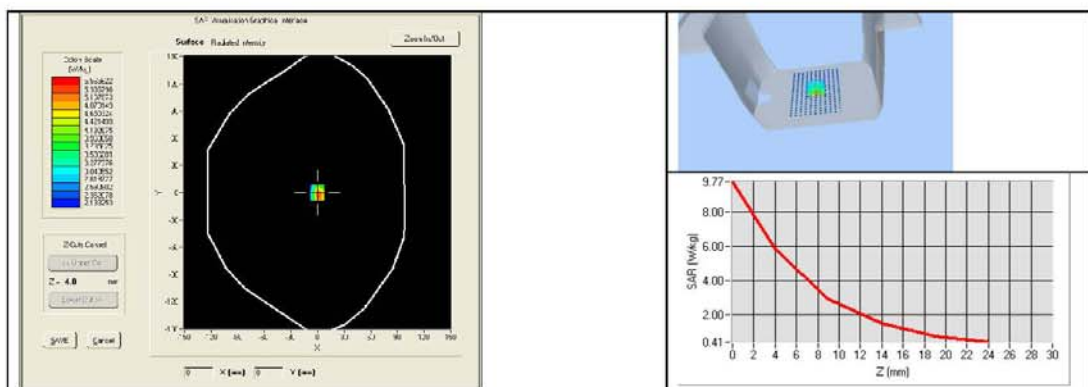
Ref: ACR.93.8.18.SATU.A

|      |            |      |            |      |
|------|------------|------|------------|------|
| 2300 | 52.9 ±5 %  |      | 1.81 ±5 %  |      |
| 2450 | 52.7 ±5 %  | PASS | 1.95 ±5 %  | PASS |
| 2600 | 52.5 ±5 %  |      | 2.16 ±5 %  |      |
| 3000 | 52.0 ±5 %  |      | 2.73 ±5 %  |      |
| 3500 | 51.3 ±5 %  |      | 3.31 ±5 %  |      |
| 3700 | 51.0 ±5 %  |      | 3.55 ±5 %  |      |
| 5200 | 49.0 ±10 % |      | 5.30 ±10 % |      |
| 5300 | 48.9 ±10 % |      | 5.42 ±10 % |      |
| 5400 | 48.7 ±10 % |      | 5.53 ±10 % |      |
| 5500 | 48.6 ±10 % |      | 5.65 ±10 % |      |
| 5600 | 48.5 ±10 % |      | 5.77 ±10 % |      |
| 5800 | 48.2 ±10 % |      | 6.00 ±10 % |      |

7.4 SAR MEASUREMENT RESULT WITH BODY LIQUID

|   |  |
|---|--|
| Software                                  | OPENSAR V4                                   |
| Phantom                                   | SN 20/09 SAM71                               |
| Probe                                     | SN 18/11 EPG122                              |
| Liquid                                    | Body Liquid Values: eps' : 53.2 sigma : 1.89 |
| Distance between dipole center and liquid | 10.0 mm                                      |
| Area scan resolution                      | dx=8mm/dy=8mm                                |
| Zoon Scan Resolution                      | dx=5mm/dy=5mm/dz=5mm                         |
| Frequency                                 | 2450 MHz                                     |
| Input power                               | 20 dBm                                       |
| Liquid Temperature                        | 21 °C  |
| Lab Temperature                           | 21 °C  |
| Lab Humidity                              | 45 %   |

| Frequency MHz | 1 g SAR (W/kg/W) | 10 g SAR (W/kg/W) |
|---------------|------------------|-------------------|
|               | measured         | measured          |
| 2450          | 53.67 (5.37)     | 24.37 (2.44)      |



Page: 10/11

This document shall not be reproduced, except in full or in part, without the written approval of MVG. The information contained herein is to be used only for the purpose for which it is submitted and is not to be released in whole or part without written approval of MVG.



## SAR REFERENCE DIPOLE CALIBRATION REPORT

Ref: ACR.93.8.18.SATU.A

## 8 LIST OF EQUIPMENT

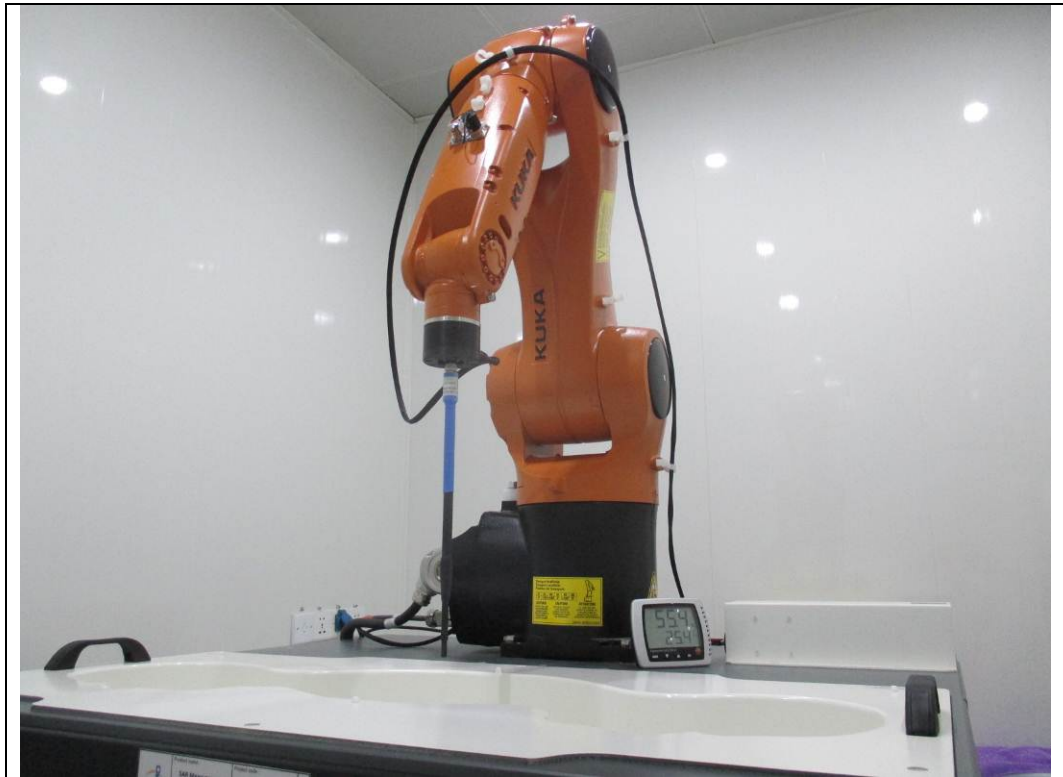
| Equipment Summary Sheet         |                      |                    |   |   |
|---------------------------------|----------------------|--------------------|---|---|
| Equipment Description           | Manufacturer / Model | Identification No. | Current Calibration Date                      | Next Calibration Date                         |
| SAM Phantom                     | MVG                  | SN-20/09-SAM71     | Validated. No cal required.                   | Validated. No cal required.                   |
| COMOSAR Test Bench              | Version 3            | NA                 | Validated. No cal required.                   | Validated. No cal required.                   |
| Network Analyzer                | Rhode & Schwarz ZVA  | SN100132           | 02/2016                                       | 02/2019                                       |
| Calipers                        | Carrera              | CALIPER-01         | 01/2017                                       | 01/2020                                       |
| Reference Probe                 | MVG                  | EPG122 SN 18/11    | 10/2017                                       | 10/2018                                       |
| Multimeter                      | Keithley 2000        | 1188656            | 01/2017                                       | 01/2020                                       |
| Signal Generator                | Agilent E4438C       | MY49070581         | 01/2017                                       | 01/2020                                       |
| Amplifier                       | Aethercomm           | SN 046             | Characterized prior to test. No cal required. | Characterized prior to test. No cal required. |
| Power Meter                     | HP E4418A            | US38261498         | 01/2017                                       | 01/2020                                       |
| Power Sensor                    | HP ECP-E26A          | US37181460         | 01/2017                                       | 01/2020                                       |
| Directional Coupler             | Narda 4216-20        | 01386              | Characterized prior to test. No cal required. | Characterized prior to test. No cal required. |
| Temperature and Humidity Sensor | Control Company      | 150798832          | 10/2017                                       | 10/2019                                       |

Page: 11/11

*This document shall not be reproduced, except in full or in part, without the written approval of MVG.  
The information contained herein is to be used only for the purpose for which it is submitted and is not to be released in whole or part without written approval of MVG.*

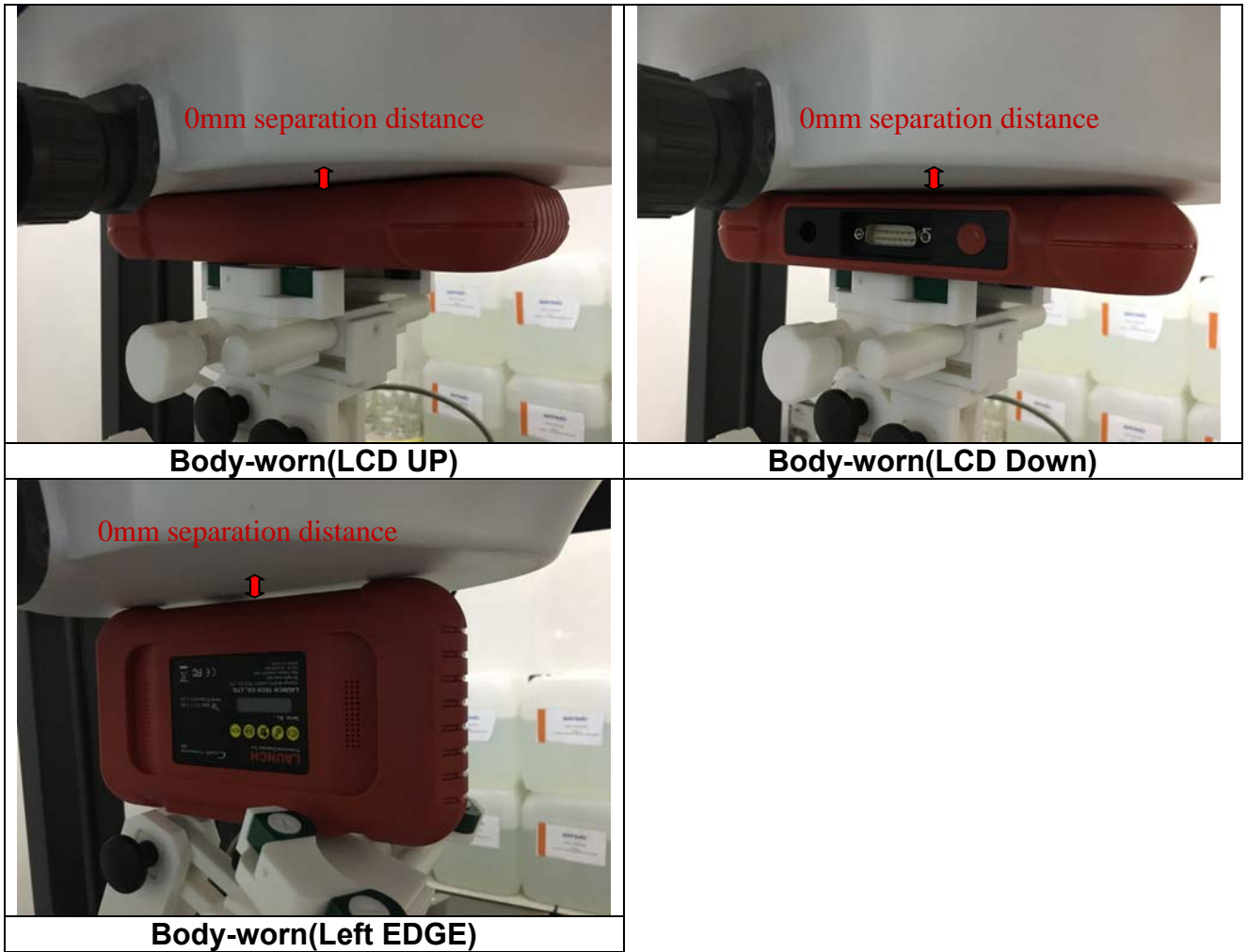


## 17 SAR System Photos



Liquid depth  $\geq$  15cm

### 18 Setup Photos



## 19 EUT Photos

### Front side



### Back side



====End of report=====