





Quick Installation Guide  

Guide d'installation rapide 

Anleitung zur Schnellinstallation 

Guía de instalación rápida 

Руководство по быстрой установке 

**TPL-310AP**  
1.01

## Table of Contents

English	1
1. Before You Start	1
2. Configure the TPL-310AP	3
3. Create a powerline network	7
4. LEDs and Buttons	9
Français	11
1. Avant de commencer	11
2. Configuration du TPL-310AP	13
3. Créez un réseau powerline	17
4. Voyants et boutons	19
Deutsch	21
1. Bevor Sie anfangen	21
2. Konfiguration des TPL-310AP	23
3. Aufbau eines Powerline-Netzwerks	28
4. LEDs und Tasten	30
Español	32
1. Antes de iniciar	32
2. Configuración del TPL-310AP	34
3. Cree una red de línea eléctrica (powerline)	39
4. Diodos LED y botones	41
Русский	43
1. Перед началом работы	43
2. Настройка TPL-310AP	45
3. Создание сети Powerline	49
4. Светодиоды и кнопки	51
Português	
Para Guia de Instalação em Português, favor ver CD.	
Eesti	
Eestikeelse paigaldusjuhendi leiate kaasasolevalt CD-plaadilt.	
Troubleshooting	53
Wireless Tips	57

## 1. Before You Start

ENGLISH

FRANÇAIS

DEUTSCH

ESPAÑOL

РУССКИЙ



### Package Contents

- TPL-310AP
- CD-ROM (Utility and User's Guide)
- Multi-Language Quick Installation Guide
- Network Cable (1.5m/4.9ft)

### System Requirements

- CD-ROM Drive
- A Desktop or Laptop PC with or wireless Network Adapter Installed
- Existing 10/100Mbps wired network when TPL-310AP is used to a powerline network to an existing wired network
- Web Browser: Internet Explorer (6.0 or higher)
- Additional HomePlug® AV powerline adapter (e.g. TRENDnet TPL-303E, TPL-304E, TPL-305E, or another TPL-310AP).

Note: You will need at least 2 powerline adapters to establish a powerline network. Please ensure that you have an additional powerline adapter before following the installation procedure for this product.

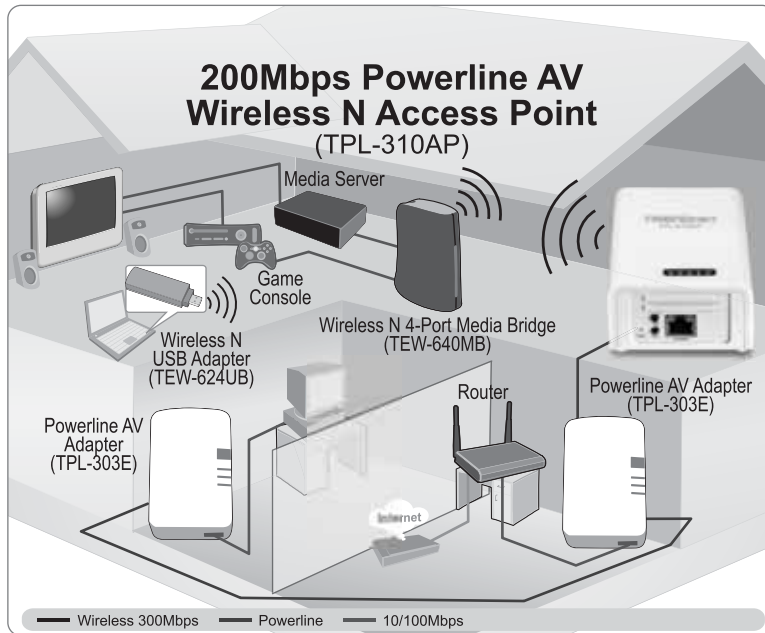
### Software Utility Requirements

Supported Operating Systems	CPU	Memory
Windows 7 (32/64-bit)	1GHz or above	1GB RAM or above
Windows Vista (32/64-bit)	800MHz or above	512MB RAM or above
Windows XP (32/64-bit)	300MHz or above	256MB RAM or above

#### Note:

The configuration utility will allow you to add security to your powerline network by providing you with the ability to change the default network name and create your own personal network name for your powerline network. The utility can also help you to troubleshoot connectivity between powerline adapters by verifying the network name. Please refer to the User's Guide on the TPL-310AP CD-ROM for instructions on installing and using the utility.

-----  
The antenna(s) used for this transmitter must be installed to provide a separation distance of at least 20cm from all persons.



The installation diagram shows a typical setup of the TPL-310AP extending your wireless network connectivity to another room when bridged with an additional powerline adapter, in this case, the TRENDnet TPL-303E. Assuming you have the TPL-310AP and one additional TRENDnet Powerline AV adapter, this guide will provide the procedure to installing and configuring the TPL-310AP with one additional TRENDnet Powerline AV adapter to extend your wireless network to another room (not in the same room as the router and modem). The orange line represents the powerline connectivity established through your home's electrical system and the blue lines represent Cat. 5, 5e, 6 Ethernet connectivity to your network enabled appliances such as a computer, router, or IP set top box connected to your television. The green lines represent the wireless connectivity from your wireless device (e.g. laptop computer, media bridge, etc.) to the TPL-310AP.

ENGLISH

FRANÇAIS

DEUTSCH

ESPAÑOL

РУССКИЙ

## 2. Configure the TPL-310AP

### Note:

When installing for the first time, it is required that you configure the Access Point from a wired computer. Assign a Static IP address to your computer's network adapter in the subnet of 192.168.10.x. Since the Access Point's default IP address is 192.168.10.100, make sure no other network devices are assigned an IP address of 192.168.10.100. (Refer to Troubleshooting section on how to configure TCP/IP settings on your PC.)

1. Plug the TPL-310AP into an available power outlet. The TPL-310AP should be within reach of your computer's network cable.



2. Connect a network cable from the TPL-310AP's network port into your computer's network port.



3. Move the Power switch to the "On" position.



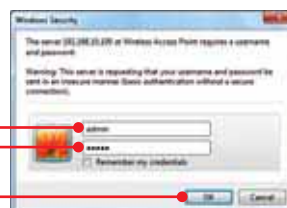
4. Assign a Static IP address to your computer's network adapter in the subnet of 192.168.10.x. (Refer to Troubleshooting section on how to configure TCP/IP settings on your PC.)

5. Open your web browser, type <http://192.168.10.100> in the Address bar, and then press **Enter**.

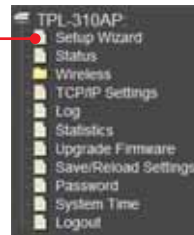


6. Enter the User Name and password and then click **OK**. Default Settings:

**User name:** admin  
**Password:** admin  
Note: User name and Password are case sensitive.



7. The Setup Wizard will automatically appear.  
Click **Setup Wizard** if the Setup Wizard does not automatically appear.



8. Click **Next**.



9. For DHCP, click on the drop down arrow and Select **Client for DHCP** to have the TPL-310AP automatically obtain an IP address from your DHCP server (router). If **Disabled** is selected for **DHCP**, you will need to configure the following:

**IP address:** The assigned IP address should match your network (e.g. 192.168.10.x, 192.168.0.x, 192.168.1.x). This IP address should not be used by any other network device on your network.

**Subnet Mask:** In most cases, the default Subnet Mask (255.255.255.0) should be fine. Then click **Next**.

Note: It is recommended to manually configure the LAN Interface Settings (IP address and Subnet Mask) in case you need to access the TPL-310AP in the future. Please write down the IP settings assigned for future reference.



ENGLISH

FRANÇAIS

DEUTSCH

ESPAÑOL

РУССКИЙ

10. You will need to configure the following:

**Band:** In most cases, the default setting (2.4GHz (B+G+N)) should be fine.

**Mode:** In most cases, the default setting (AP) should be fine.

**Network Type:** This setting does not apply to (AP) mode. Continue to the next setting.

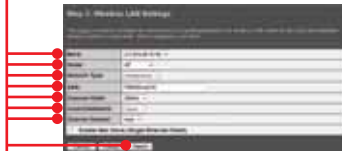
**SSID:** The SSID is the wireless network name of your wireless network (e.g. wireless router or access point). Enter a unique SSID (Network Name). Do not use anything that would be identifying like "Smith Family Network". Choose something that can be easily identified when searching for available wireless networks.

**Channel Width:** In most cases, the default Setting (20MHz) should be fine.

**Channel Number:** This setting only applies if the Channel Width is set to 40MHz. In most cases, the default setting should be fine.

**Enable Mac Clone (Single Ethernet Client):** In most cases, the default setting should be fine.

Then click **Next**.



**Note:**

1. To protect your network from any unauthorized access it is recommended to enable wireless encryption.
2. Once encryption is enabled on the Wireless Access Point, each wireless computer or device must be configured with the same encryption key.
3. The example below is for WPA2 (AES) security. If you select WPA or WPA2, make sure your wireless adapters support WPA or WPA2. If your wireless adapters do not support WPA or WPA2, then select WEP.
4. For Wi-Fi Protected Setup (WPS) instructions please refer to the User's Guide on the CD-ROM. WPS instructions will vary depending on your wireless adapter. Please contact the manufacturer of your wireless

11. Select **WPA2(AES)**.



12. Select **Passphrase or Hex (64 characters)** for Pre-Shared Key Format.



13. Enter characters for your Pre-Shared key and then click **Next**. For WPA-PSK or WPA2-PSK, the Pre-Shared Key must be between 8 and 63 ASCII (Passphrase) or 64 (HEX 0-9 & A-F) characters. Make sure to copy down the Pre-Shared Key. Use the same encryption key on your wireless computer or other wireless device to connect to the TPL-310AP wirelessly.



14. Please wait 25 seconds while the TPL-310AP reboots.



15. After the settings are applied and the device has rebooted, disconnect the TPL-310AP from the power outlet.

ENGLISH

FRANÇAIS

DEUTSCH

ESPAÑOL

РУССКИЙ



### 3. Create a powerline network

**Note:**

1. DO NOT install the TPL-310AP until instructed to do so.
2. DO NOT plug the TPL-310AP into a surge protector or power strip.
3. It is NOT recommended to use this product on electrical systems that use AFCI circuit breakers or plugged into GFI protected outlets as this may cause performance degradation or loss in connectivity.
4. Assuming that the TPL-310AP and other TRENDnet Powerline AV devices are configured with the default settings, to create a powerline network, simply connect the TPL-310AP and other TRENDnet Powerline AV devices to wall outlets that are on the same electrical system. No additional configuration in the utility is necessary.
5. Avoid connecting the TPL-310AP into an outlet that has appliances (e.g. refrigerators, washer and dryer) plugged in.
6. This TPL-310AP 200Mbps Powerline AV Wireless N Access Point needs to pair with at least one other HomePlug<sup>®</sup> AV compatible powerline device. (e.g. TRENDnet Powerline AV products TPL-303E, TPL-304E, TPL-305E, or another TPL-310AP.
7. In order for the TPL-310AP to link to your other TRENDnet Powerline AV devices, each unit must be on the same electrical system.
8. A maximum of 16 TPL-310AP and other TRENDnet Powerline AV devices can be networked.

Below is an example showing how to create a Powerline network using TPL-310AP, TPL-303E and an existing router to share Internet.

1. Plug a TPL-303E or other TRENDnet Powerline AV adapter into an available power outlet. This powerline adapter should be located within the reach of the router's network cable.

2. Connect a network cable from the powerline adapter to an available LAN network port on your router (e.g. TEW-691GR).



ENGLISH

FRANÇAIS

DEUTSCH

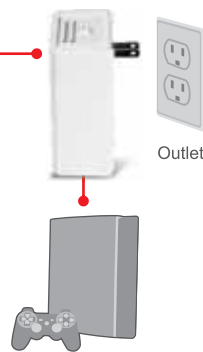
ESPAÑOL

РУССКИЙ

3. Plug the TPL-310AP into an available power outlet in your desired location to extend wireless connectivity. Please refer to the Wireless Tips section for optimal placement of the TPL-310AP.



4. (OPTIONAL) Connect a network cable from the remote computer or network appliances (e.g. Game Console, IP Set box, network enabled TV, etc.).



5. Verify that the WIFI (Wireless) (Blinking/Green), ETH (Ethernet) (Green), PL (Powerline) and PWR (Power) (Solid/Green) LEDs are on for the TPL-310AP.

#### Your installation is now complete

For detailed information regarding the **TPL-310AP** configuration and advanced settings, please refer to the Troubleshooting section, User's Guide on the Utility CD-ROM, or TRENDnet's website at <http://www.trendnet.com>.

#### Register Your Product

To ensure the highest level of customer service and support, please take a moment to register your product Online at: [www.trendnet.com/register](http://www.trendnet.com/register)

Thank you for choosing TRENDnet

ENGLISH

FRANÇAIS

DEUTSCH

ESPAÑOL

РУССКИЙ

#### 4. LEDs and Buttons

ENGLISH

WPS (Wi-Fi Protected Setup)



FRANÇAIS

ETH (Network Port)



DEUTSCH

WIFI (Wireless)



ESPAÑOL

PL (Powerline)



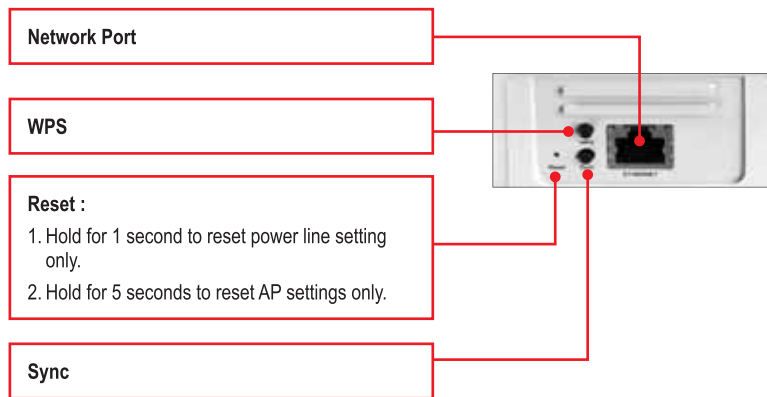
РУССКИЙ

PWR (Power)

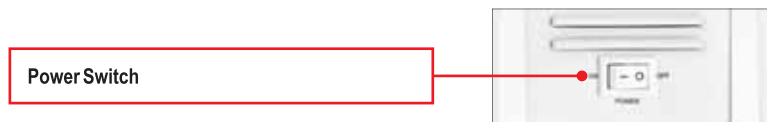


**Note:**

The Network Port, WPS button, Reset button and Sync button are located at the bottom of the device.



The Power switch is located at the top of the device.



**\*Note:** The following factors may affect the powerline network's connection quality:

- Noise – Generated by appliances that are connected to your electrical system through power outlets that have high power consumption requirements. (e.g. Microwaves, ovens, blow dryer, iron, dishwasher, etc.) The quality of your household electrical wiring may also cause additional noise on your electrical system.
- Distance – Long lengths of electrical wiring through your electrical system between connected powerline adapters.

ENGLISH

FRANÇAIS

DEUTSCH

ESPAÑOL

РУССКИЙ

## 1. Avant de commencer

ENGLISH

FRANÇAIS

DEUTSCH

ESPAÑOL

РУССКИЙ



### Contenu de l'emballage

- TPL-310AP
- CD-ROM contenant l'utilitaire et le guide de l'utilisateur
- Guide d'installation rapide en plusieurs langues
- Câble réseau (1.5m)

### Vérification de l'équipement

- Lecteur de CD-ROM
- Un ordinateur de bureau ou portable avec un adaptateur réseau filaire ou sans fil installé
- Un réseau 10/100 Mbps filaire existant lorsque le TPL-310AP est utilisé sur un réseau powerline sur un réseau filaire existant
- Navigateur Internet : Internet Explorer 6.0 ou ultérieur
- Un adaptateur powerline AV HomePlug® supplémentaire (p. ex. TPL-303E, TPL-304E, TPL-305E ou un autre TPL-310AP de TRENDnet)

Remarque : Vous aurez besoin d'au moins 2 adaptateurs powerline pour établir un réseau powerline. Veuillez vous assurer de disposer d'un adaptateur powerline supplémentaire avant de suivre les instructions d'installation de ce produit.

### Exigences logicielles

Systèmes d'exploitation supportés	Microprocesseur	Mémoire
Windows 7 (32/64-bit)	1GHz ou supérieur	1GB RAM ou supérieur
Windows Vista (32/64-bit)	800MHz ou supérieur	512MB RAM ou supérieur
Windows XP (32/64-bit)	300MHz ou supérieur	256MB RAM ou supérieur

#### Remarque:

L'utilitaire de configuration vous permettra d'améliorer la sécurité de votre réseau powerline en vous donnant la possibilité de changer le nom par défaut du réseau et de créer votre propre nom de réseau à votre réseau powerline. L'utilitaire peut aussi vous aider à réparer les problèmes de connectivité entre les adaptateurs powerline en vérifiant le nom du réseau. Veuillez consulter le Guide de l'utilisateur sur le CD-ROM du TPL-310AP pour découvrir les instructions d'installation et d'utilisation.