



**TRENDNET**<sup>®</sup>



**User's Guide**

**TEW-640MB**

**1.01**

## Statement

This equipment has been tested and found to comply with the limits for a Class B digital device, pursuant to Part 15 of the FCC Rules. These limits are designed to provide reasonable protection against harmful interference in a residential installation. This equipment generates uses and can radiate radio frequency energy and, if not installed and used in accordance with the instructions, may cause harmful interference to radio communications. However, there is no guarantee that interference will not occur in a particular installation. If this equipment does cause harmful interference to radio or television reception, which can be determined by turning the equipment off and on, the user is encouraged to try to correct the interference by one of the following measures:

- Reorient or relocate the receiving antenna.
- Increase the separation between the equipment and receiver.
- Connect the equipment into an outlet on a circuit different from that to which the receiver is connected.
- Consult the dealer or an experienced radio/TV technician for help.

FCC Caution: Any changes or modifications not expressly approved by the party responsible for compliance could void the user's authority to operate this equipment.

This device complies with Part 15 of the FCC Rules. Operation is subject to the following two conditions: (1) This device may not cause harmful interference, and (2) this device must accept any interference received, including interference that may cause undesired operation.

### **IMPORTANT NOTE:**

#### **FCC Radiation Exposure Statement:**

This equipment complies with FCC radiation exposure limits set forth for an uncontrolled environment. This equipment should be installed and operated with minimum distance 20cm between the radiator & your body.

This transmitter must not be co-located or operating in conjunction with any other antenna or transmitter.

The availability of some specific channels and/or operational frequency bands are country dependent and are firmware programmed at the factory to match the intended destination. The firmware setting is not accessible by the end user.

## Europe – EU Declaration of Conformity

This device complies with the essential requirements of the R&TTE Directive 1999/5/EC. The following test methods have been applied in order to prove presumption of conformity with the essential requirements of the R&TTE Directive 1999/5/EC:

- **EN60950-1:2006**  
Safety of Information Technology Equipment
- **EN50385 : (2002-08)**  
Product standard to demonstrate the compliance of radio base stations and fixed terminal stations for wireless telecommunication systems with the basic restrictions or the reference levels related to human exposure to radio frequency electromagnetic fields (110MHz - 40 GHz) - General public
- **EN 300 328 V1.7.1: (2006-10)**  
Electromagnetic compatibility and Radio spectrum Matters (ERM); Wideband Transmission systems; Data transmission equipment operating in the 2,4 GHz ISM band and using spread spectrum modulation techniques; Harmonized EN covering essential requirements under article 3.2 of the R&TTE Directive
- **EN 301 489-1 V1.8.1: (2008-04)**  
Electromagnetic compatibility and Radio Spectrum Matters (ERM); ElectroMagnetic Compatibility (EMC) standard for radio equipment and services; Part 1: Common technical requirements
- **EN 301 489-17 V1.3.2 (2008-04)**  
Electromagnetic compatibility and Radio spectrum Matters (ERM); ElectroMagnetic Compatibility (EMC) standard for radio equipment; Part 17: Specific conditions for 2,4 GHz wideband transmission systems, 5 GHz high performance RLAN equipment and 5,8 GHz Broadband Data Transmitting Systems

-  
This device is a 2.4 GHz wideband transmission system (transceiver), intended for use in all EU member states and EFTA countries, except in France and Italy where restrictive use applies.

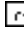





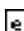
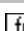



In Italy the end-user should apply for a license at the national spectrum authorities in order to obtain authorization to use the device for setting up outdoor radio links and/or for supplying public access to telecommunications and/or network services.

This device may not be used for setting up outdoor radio links in France and in some areas the

RF

output power may be limited to 10 mW EIRP in the frequency range of 2454 – 2483.5 MHz. For detailed information the end-user should contact the national spectrum authority in France.



 Český [Czech]	<p><i>TRENDnet</i> tímto prohlašuje, že tento <i>TEW-640MB</i> je ve shodě se základními požadavky a dalšími příslušnými ustanoveními směrnice 1999/5/ES.</p>
 Dansk [Danish]	<p>Undertegnede <i>TRENDnet</i> erklærer herved, at følgende udstyr <i>TEW-640MB</i> overholder de væsentlige krav og øvrige relevante krav i direktiv 1999/5/EF.</p>
 Deutsch [German]	<p>Hiermit erklärt <i>TRENDnet</i>, dass sich das Gerät <i>TEW-640MB</i> in Übereinstimmung mit den grundlegenden Anforderungen und den übrigen einschlägigen Bestimmungen der Richtlinie 1999/5/EG befindet.</p>
 Eesti [Estonian]	<p>Käesolevaga kinnitab <i>TRENDnet</i> seadme <i>TEW-640MB</i> vastavust direktiivi 1999/5/EÜ põhinõuetele ja nimetatud direktiivist tulenevatele teistele asjakohastele sätetele.</p>
 English [English]	<p>Hereby, <i>TRENDnet</i>, declares that this <i>TEW-640MB</i> is in compliance with the essential requirements and other relevant provisions of Directive 1999/5/EC.</p>
 Español [Spanish]	<p>Por medio de la presente <i>TRENDnet</i> declara que el <i>TEW-640MB</i> cumple con los requisitos esenciales y cualesquiera otras disposiciones aplicables o exigibles de la Directiva 1999/5/CE.</p>
 Ελληνική [Greek]	<p>ΜΕ ΤΗΝ ΠΑΡΟΥΣΑ <i>TRENDnet</i> ΔΗΛΩΝΕΙ ΟΤΙ <i>TEW-640MB</i> ΣΥΜΜΟΡΦΩΝΕΤΑΙ ΠΡΟΣ ΤΙΣ ΟΥΣΙΩΔΕΙΣ ΑΠΑΙΤΗΣΕΙΣ ΚΑΙ ΤΙΣ ΛΟΙΠΕΣ ΣΧΕΤΙΚΕΣ ΔΙΑΤΑΞΕΙΣ ΤΗΣ ΟΔΗΓΙΑΣ 1999/5/ΕΚ.</p>
 Français [French]	<p>Par la présente <i>TRENDnet</i> déclare que l'appareil <i>TEW-640MB</i> est conforme aux exigences essentielles et aux autres dispositions pertinentes de la directive 1999/5/CE.</p>
 Italiano [Italian]	<p>Con la presente <i>TRENDnet</i> dichiara che questo <i>TEW-640MB</i> è conforme ai requisiti essenziali ed alle altre disposizioni pertinenti stabilite dalla direttiva 1999/5/CE.</p>
 Latviski [Latvian]	<p>Ar šo <i>TRENDnet</i> deklarē, ka <i>TEW-640MB</i> atbilst Direktīvas 1999/5/EK būtiskajām prasībām un citiem ar to saistītajiem noteikumiem.</p>
 Lietuvių [Lithuanian]	<p>Šiuo <i>TRENDnet</i> deklaruoja, kad šis <i>TEW-640MB</i> atitinka esminius reikalavimus ir kitas 1999/5/EB Direktyvos nuostatas.</p>

 Nederlands [Dutch]	Hierbij verklaart <i>TRENDnet</i> dat het toestel <i>TEW-640MB</i> in overeenstemming is met de essentiële eisen en de andere relevante bepalingen van richtlijn 1999/5/EG.
 Malti [Maltese]	Hawnhekk, <i>TRENDnet</i> jiddikjara li dan <i>TEW-640MB</i> jikkonforma mal-ħtiġijiet essenzjali u ma provvedimenti oħrajn relevanti li hemm fid-Dirrettiva 1999/5/EC.
 Magyar [Hungarian]	Alulírott, <i>TRENDnet</i> nyilatkozom, hogy a <i>TEW-640MB</i> megfelel a vonatkozó alapvető követelményeknek és az 1999/5/EC irányelv egyéb előírásainak.
 Polski [Polish]	Niniejszym <i>TRENDnet</i> oświadcza, że <i>TEW-640MB</i> jest zgodny z zasadniczymi wymogami oraz pozostałymi stosownymi postanowieniami Dyrektywy 1999/5/EC.
 Português [Portuguese ]	<i>TRENDnet</i> declara que este <i>TEW-640MB</i> está conforme com os requisitos essenciais e outras disposições da Directiva 1999/5/CE.
 Slovensko [Slovenian]	<i>TRENDnet</i> izjavlja, da je ta <i>TEW-640MB</i> v skladu z bistvenimi zahtevami in ostalimi relevantnimi določili direktive 1999/5/ES.
Slovensky [Slovak]	<i>TRENDnet</i> týmto vyhlasuje, že <i>TEW-640MB</i> spĺňa základné požiadavky a všetky príslušné ustanovenia Smernice 1999/5/ES.
 Suomi [Finnish]	<i>TRENDnet</i> ] vakuuttaa täten että <i>TEW-640MB</i> tyyppinen laite on direktiivin 1999/5/EY oleellisten vaatimusten ja sitä koskevien direktiivin muiden ehtojen mukainen.
 Svenska [Swedish]	Härmed intygar <i>TRENDnet</i> att denna <i>TEW-640MB</i> står i överensstämmelse med de väsentliga egenskapskrav och övriga relevanta bestämmelser som framgår av direktiv 1999/5/EG.

## European Union Notice:

Radio products with the CE marking comply with the R&TTE Directive (1999/5/EC), the EMC Directive (89/336/EEC) and the Low Voltage Directive (73/23/EEC) issued by the Commission of the European Community.

Compliance with these directives implies conformity to the following European Norms:

- EN 60950 Product Safety
- EN 300 328 Technical requirement for radio equipment
- EN 301 489-1/-17 General EMC requirements for radio equipment

### **Trademark recognition**

All product names used in this manual are the properties of their respective owners and are acknowledged.



# Table of Contents

Getting Started.....	10
Package Contents .....	10
Minimum System Requirements .....	10
Introduction .....	11
Features .....	11
Hardware Overview.....	12
LED Indications .....	12
Rear Panel .....	13
Installation Considerations.....	14
Getting Start .....	15
Using the Configuration Menu .....	21
Network .....	22
LAN Setting.....	22
Wireless .....	23
Profile .....	23
Site Survey .....	26
Statistics.....	27
Advance.....	28
QoS .....	30
WPS.....	31
Administrator .....	32
Wizard .....	32
Management .....	33
Upload Firmware .....	34
Setting Management .....	35
Status .....	36
Glossary .....	37
Specifications .....	50
Limited Warranty.....	51

# Getting Started

Congratulations on purchasing the TEW-640MB! This manual provides information for setting up and configuring the TEW-640MB. This manual is intended for both home users and professionals.

## Package Contents

- TEW-640MB Wireless N Gaming Adapter
- CD-ROM (User's Guide)
- Multi-Language Quick Installation Guide
- Network cable
- Power Adapter (12V, 0.5A)



Using a power supply with a different voltage than the one included with your product will cause damage and void the warranty for this product.

## Minimum System Requirements

### Installation Requirements

- Web Browser: Internet Explorer (6 or higher) Mozilla or Safari.
- A computer with a network adapter or wireless adapter properly installed.
- CD-ROM drive
- A router with an available network LAN port.
- A RJ-45 network cable.

# Introduction

The 300Mbps Wireless N 4-Port Media Bridge, model TEW-640MB, connects network enabled Blu-ray™ players, Televisions, Digital Video Recorders (DVR), receivers, and gaming consoles to the Internet.

The optimum wireless experience is provided by WMM Quality of Service (QoS) technology that prioritizes video and audio content.

Setup is simple, with no drivers to install. Simply press the Wi-Fi Protected Setup (WPS) button on the TEW-640MB and on your router to automatically connect. The latest in wireless encryption protects your digital network. Advanced Multiple Input Multiple Output (MIMO) antenna technology reduces wireless dead spots. Power Save mode conserves electricity when idle. Connect up to four of your favorite media center devices to the Internet wirelessly at blazing fast 300Mbps wireless n speeds.

## Features

- 4 x 10/100Mbps Auto-MDIX LAN ports
- 1 x WPS button
- 1 x Reset button
- Diagnostic LEDs
- High performance wireless n bridge connects wired devices to a wireless network
- Wi-Fi compliant with the IEEE 802.11n standard
- Backwards compatible with IEEE 802.11g/b devices
- Wi-Fi Multimedia (WMM) Quality of Service (QoS) data prioritization
- Power Save mode conserves electricity
- Supports Multiple Input Multiple Output (MIMO) antenna technology
- Connects network-ready Blu-ray™ players, Televisions, Digital Video Recorders (DVR), receivers, and gaming consoles such as Nintendo® Wii™, Xbox®, Xbox® 360™, PlayStation® 2, and PlayStation® 3 to a high speed wireless n network
- One-touch wireless security setup using the Wi-Fi Protected Setup (WPS) button when connecting to a WPS supporting device
- Maximum reliability, throughput and connectivity with automatic data rate switching
- Supports 64/128-bit WEP, WPA-PSK, and WPA2-PSK wireless security
- Easy user setup wizard and intuitive Web browser configuration
- Coverage of up to 50 meters indoor, 100 meters outdoor \* 3
- 3-year limited warranty

# Hardware Overview

## LED Indications



Power	Blue: ON, power on
WPS	Blue: WPS, turned on authentication complete Blue: Blinking, WPS authentication
Wireless	Blue: ON, wireless on Blue: Blinking, wireless data activity
LAN 1~4	Blue: OFF, no device connected Blue: ON, device connected Blue: Blinking, data activity
Power	Blue: ON, power on

# Rear Panel



WPS Button (top panel)	Trigger/Enable WPS Push Button Configuration (PBC)
LAN Ports 1~4	10/100 Mbps Auto MDIX LAN port
Power On/Off button	EU Version only
Power	DC input
Reset Button (bottom panel)	Resets device to default settings (press and hold for 15seconds)

# Installation Considerations

The TEW-640MB Gaming Adapter allows you to access your network by using a wireless connection from virtually anywhere within its operating range. Keep in mind that the number, thickness and location of walls, ceilings, or other objects that the wireless signals must pass through, may limit the range. Typical ranges vary depending on the types of materials and background RF (radio frequency) noise in your home or business. The key to maximizing wireless range is to follow these basic guidelines:

1. Keep the number of walls and ceilings between the TEW-640MB and other network devices to a minimum - each wall or ceiling can reduce your wireless products range from 3-90 feet (1-30 meters.) Position your devices so that the number of walls or ceilings is minimized.
2. Be aware of the direct line between network devices. A wall that is 1.5 feet thick (.5 meters), at a 45-degree angle appears to be almost 3 feet (1 meter) thick. At a 2-degree angle it looks over 42 feet (14 meters) thick! Position devices so that the signal will travel straight through a wall or ceiling (instead of at an angle) for better reception.
3. Building Materials can impede the wireless signal - a solid metal door or aluminum studs may have a negative effect on range. Try to position wireless devices and computers with wireless adapters so that the signal passes through drywall or open doorways and not other materials.
4. Keep your product away (at least 3-6 feet or 1-2 meters) from electrical devices or appliances that generate extreme RF noise.

# Getting Start

1. Connect an Ethernet cable directly from the LAN port on your PC to the LAN port on the TEW-640MB .

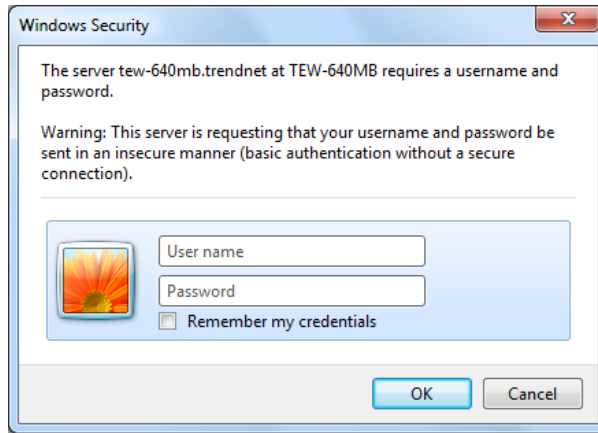
**Note:** Connect the TEW-640MB to the configuring computer. **Do not** connect the TEW-640MB to your network on the initial setup.



2. Plug in the power adapter and verify the Power & Ethernet LEDs are light.



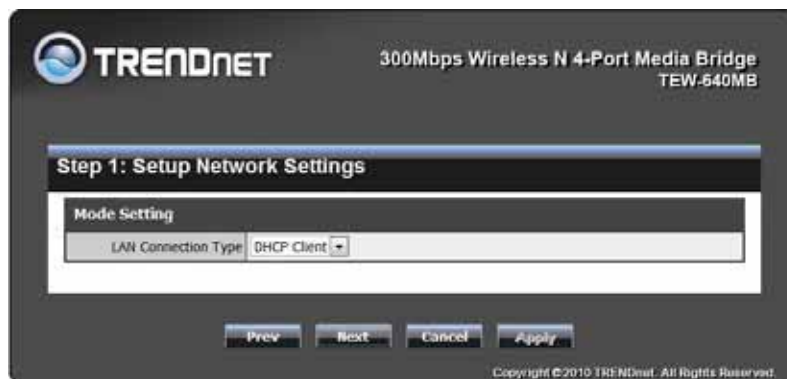
- Open your web browser and enter <http://tew-640mb.trendnet/> or <http://192.168.10.110/> into the address bar.



- Enter default username and password "admin" and press OK. The below window will appear.

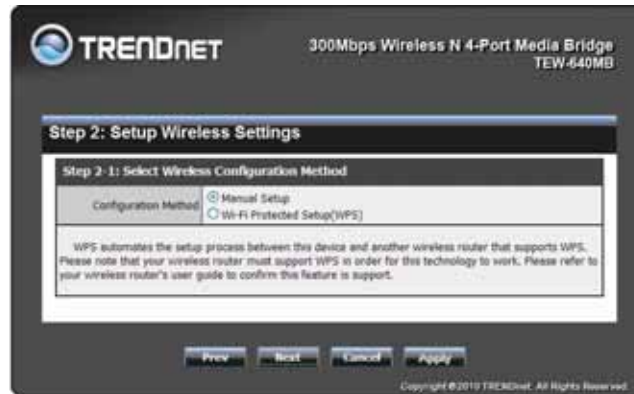


- You could click left button to restore your saved configuration setting by importing the file, or press **NEXT** and follow Wizard to complete your setting.
- Select the LAN connection type you would like to set on the TEW-640MB and click **NEXT**.

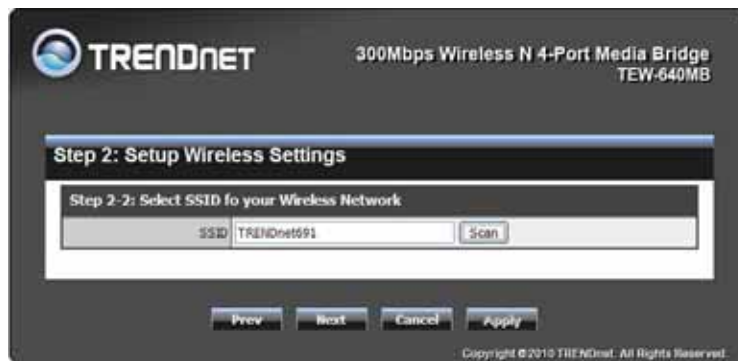




7. There are 2 options to configure the TEW-640MB, WPS (Wi-Fi Protected Setup) or Manual setup.



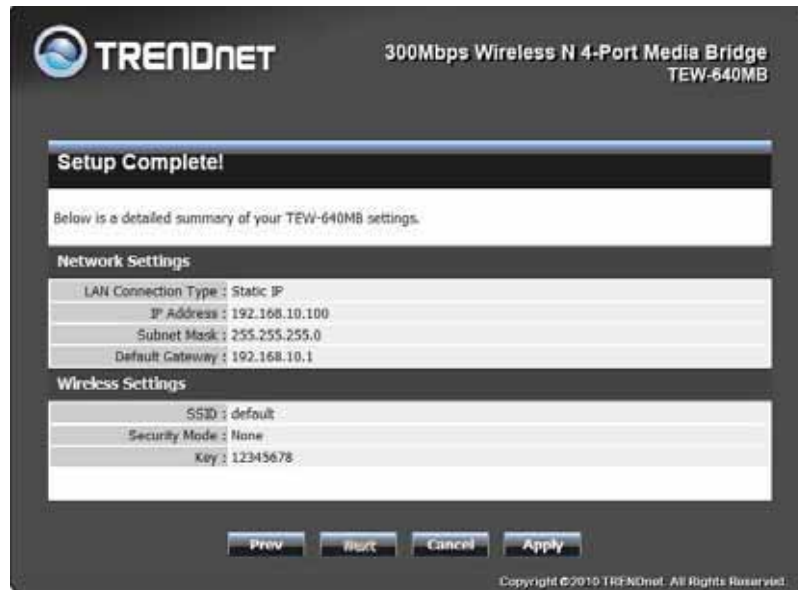
8. If you choice Manual setup, please enter SSID of your wireless router of AP (Access Point) or press Scan to choose one.



9. The TEW-640MB will automatically detect your wireless encryption type. From the pull down menu you can manually select the wireless encryption type.

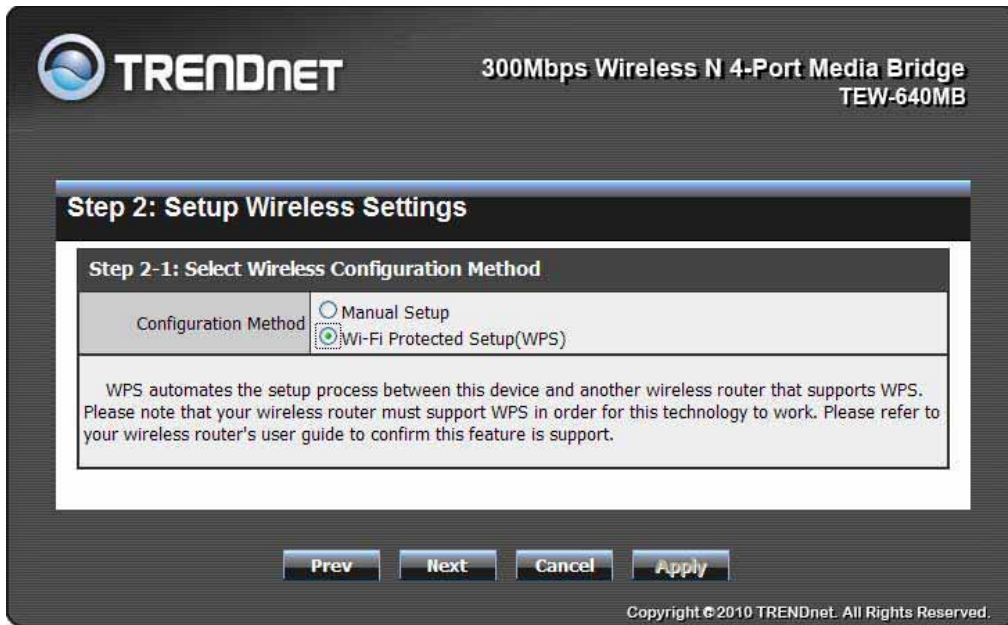


10. Verify that your settings are correct and press **APPLY**.

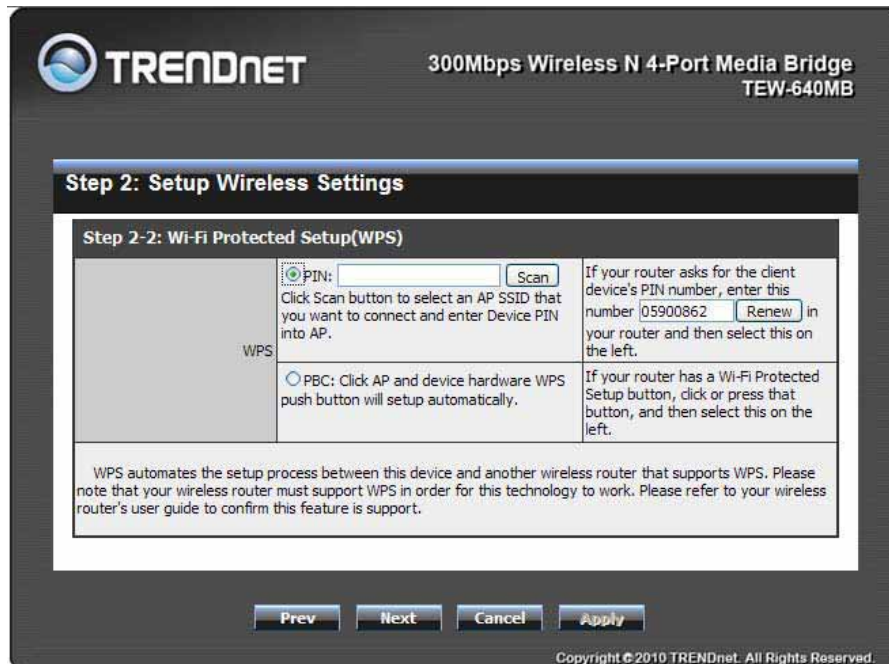


# WPS Configuration

1. To configure the TEW-640MB using WPS (Wi-Fi Protected Setup), select Wi-Fi protected Setup (WPS) option and press Next.

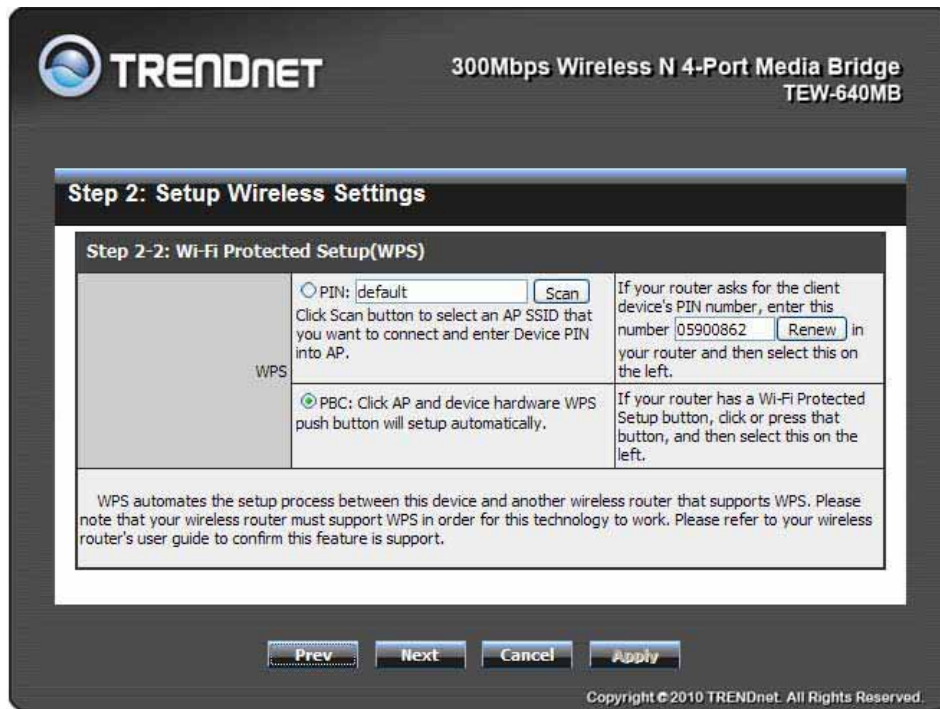


2. Select the type of WPS configuration type you would like to use. PIN configuration requires you to input the TEW-640MB PIN information into your wireless router or AP (Access Point). Click **Scan** button to select an AP SSID that you want to connect and enter Device PIN into AP.



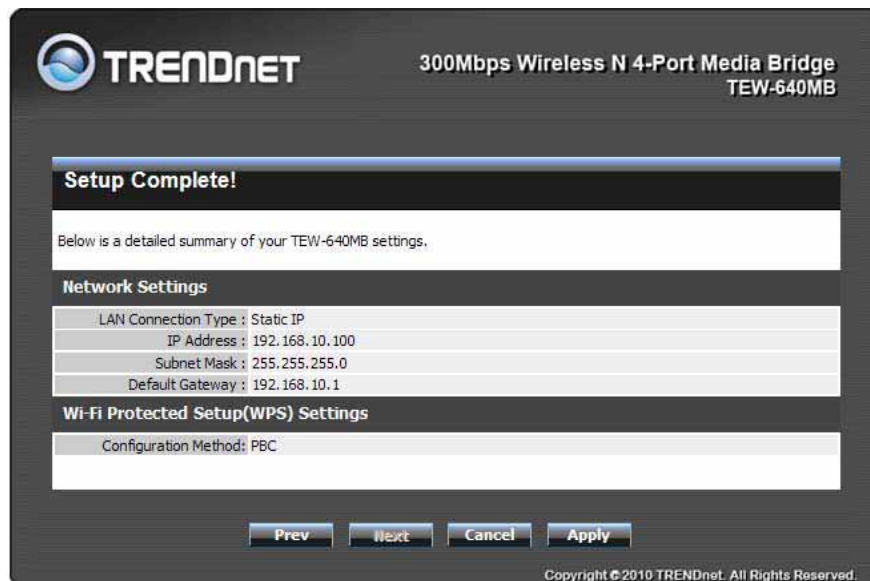
**Note:** Wait 120 seconds for WPS configuration to complete.

- When selecting PBC (Push Button Configuration) method. Select PBC and press **Next**. Then press the WPS button on your wireless router.



**Note:** Wait 120 seconds for WPS configuration to complete.

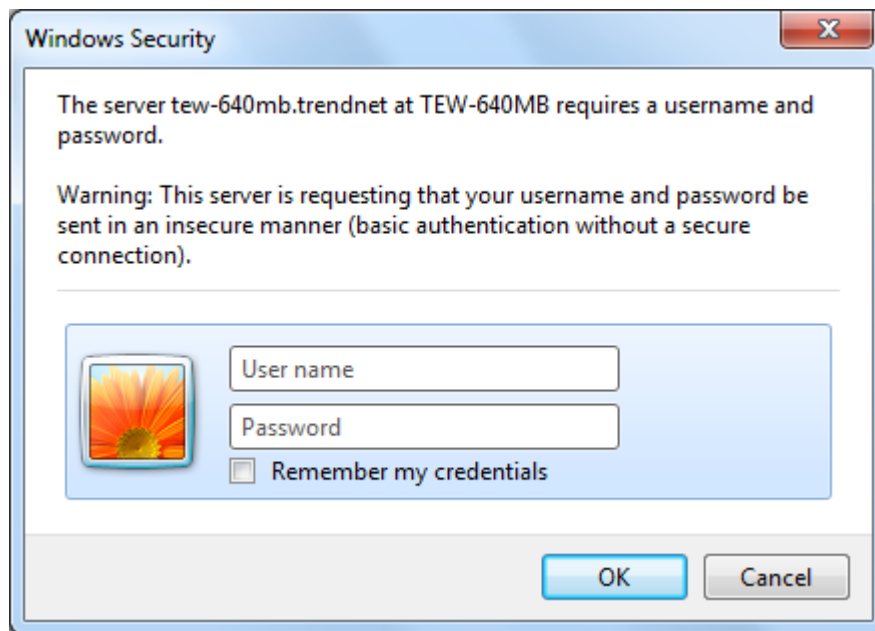
- Verify that your settings are correct and click **Apply**.



# Using the Configuration Menu

Whenever you want to configure your TEW-640MB, you can access the Configuration Menu through your PC by opening the Web-browser and typing in the IP Address of the TEW-640MB . The TEW-640MB's default IP Address is <http://192.168.10.110> or <http://tew-640mb.trendnet/>

- Open the Web browser.
- Type in the IP Address of the Bridge <http://192.168.10.110> or <http://tew-640mb.trendnet/>



**NOTE**

If you have changed the default IP Address assigned to the TEW-640MB, make sure to enter the correct IP Address.

- Enter “admin” in the User name and Password field.
- Click OK.

# Network

## LAN Setting

**TRENDnet** 300Mbps Wireless N 4-Port Media Bridge  
TEW-640MB

Network  
• LAN Setting  
Wireless  
Administration

### Local Area Network (LAN) Settings

You may choose different connection type suitable for your environment. Also, you may also configure parameters according to the selected connection type.

Mode Setting	
LAN Connection Type	Static IP

Static Mode	
IP Address	192.168.10.110
Subnet Mask	255.255.255.0
Default Gateway	
<input type="button" value="Apply"/> <input type="button" value="Cancel"/>	

Copyright © 2010 TRENDnet. All Rights Reserved.

### LAN Connection Type

Choose "Static IP (fixed IP)" if your router does not support DHCP or if for any other reason you need to assign a fixed address to the AP. In this case, you must also configure the following fields.

### IP Address

The IP address of the media bridge on the local area network. Assign any unused IP address in the range of IP addresses available from your network. For example, 192.168.10.110

### Subnet Mask

The subnet mask of the local area network.

### Default Gateway

The IP address of the router on the local area network.

# Wireless

## Profile

Create a custom connection to a specific wireless network. Use this option to make custom profiles and store new profile for later use.

The Status page shows the settings and current operation status of the Station.

Profile List							
		Profile	SSID	Channel	Authentication	Encryption	Network Type
<input checked="" type="checkbox"/>	<input type="radio"/>	Wizard_PROF001	TREN Dnet6 91	Auto	OPEN	TKIP	Infrastructure

Copyright © 2010 TRENDnet. All Rights Reserved.

Configure the setting to connect to a wireless network, selection option for network type, SSID, and wireless security. The profile can be edited, deleted and made active from this option. There are several ways to connect to your wireless network, go through the setup wizard, add a new profile or search using site survey feature.

When adding a Profile, please make sure your information matches your existing wireless network.

System Configuration	
Profile Name	PROF001
SSID	
Network Type	Infrastructure
Power Saving Mode	<input checked="" type="radio"/> CAM (Constantly Awake Mode) <input type="radio"/> Power Saving Mode
RTS Threshold	<input type="checkbox"/> Used <input type="text" value="2347"/> (range 1 - 2347)
Fragmentation Threshold	<input type="checkbox"/> Used <input type="text" value="2346"/> (range 256 - 2346)

Security Policy	
Security Mode	OPEN

Wire Equivalence Protection (WEP)	
WEP Key Length	64 bit (10 hex digits / 5 ascii keys)
WEP Key Entry Method	Hexadecimal
WEP Key 1 :	<input type="text"/>
WEP Key 2 :	<input type="text"/>
WEP Key 3 :	<input type="text"/>
WEP Key 4 :	<input type="text"/>
Default Key	Key 1

### Security Mode

Unless one of these encryption modes is selected, wireless transmissions to and from your wireless network can be easily intercepted and interpreted by unauthorized users.

### None

No encryption.

### WEP (Open or Shared)

A method of encrypting data for wireless communication intended to provide the same level of privacy as a wired network. WEP is not as secure as WPA encryption. To gain access to a WEP network, you must know the key. The key is a string of characters that you create. When using WEP, you must determine the level of encryption. The type of encryption determines the key length. 128-bit encryption requires a longer key than 64-bit encryption. Keys are defined by entering in a string in HEX (hexadecimal - using characters 0-9, A-F) or ASCII (American Standard Code for Information Interchange - alphanumeric characters) format. ASCII format is provided so you can enter a string that is easier to remember. The ASCII string is converted to HEX for use over the network. Four



keys can be defined so that you can change keys easily. A default key is selected for use on the network.

Key Length	Hex	ASCII
64-bit	10 characters	5 characters
128-bit	26 characters	13 characters

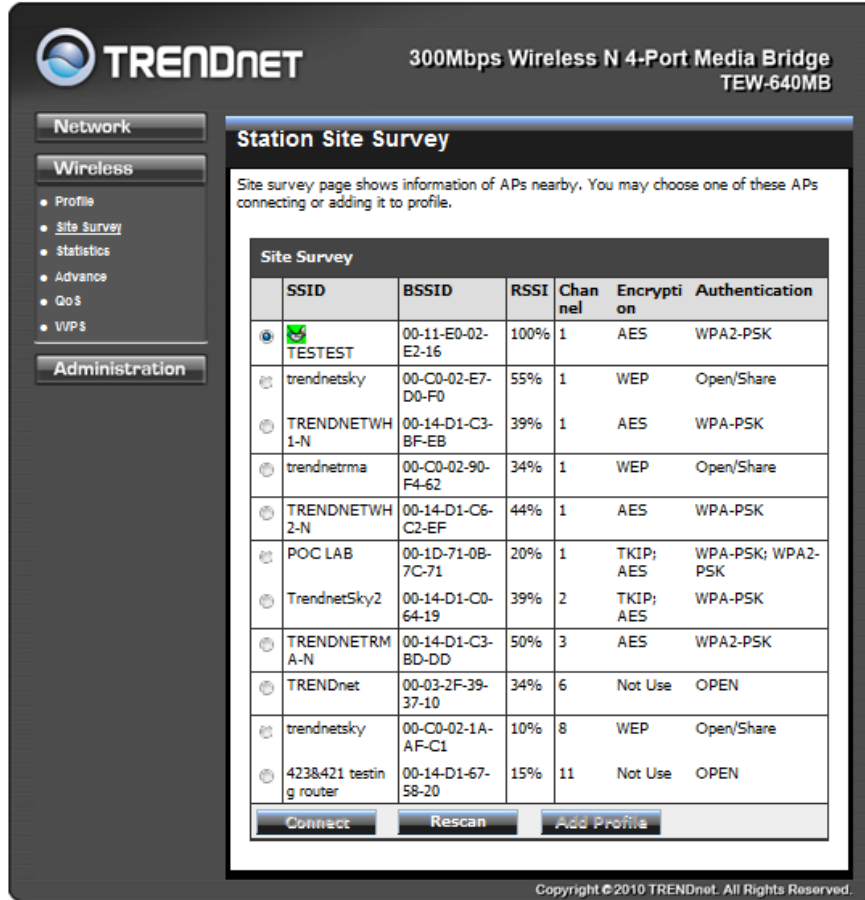
### **WPA-Personal or WPA2-Personal**

This option uses Wi-Fi Protected Access with a Pre-Shared Key (PSK).

Pre-Shared Key: The key is entered as a pass-phrase of up to 63 alphanumeric characters (AES or TKIP type) in ASCII (American Standard Code for Information Interchange) format at both ends of the wireless connection. It cannot be shorter than eight characters, although for proper security it needs to be of ample length and should not be a commonly known phrase. This phrase is used to generate session keys that are unique for each wireless client.

## Site Survey

Use the Site Survey tool to search for wireless networks around the TEW-640MB adapter. Click on the **Scan** button to search for wireless network to join. From this window, you can also add the selected network to your profile by clicking the **Add Profile** button. To connect to the desired wireless network, click on the **Connect** button to join a wireless network from this site survey window.



**TRENDNET** 300Mbps Wireless N 4-Port Media Bridge TEW-640MB

**Station Site Survey**

Site survey page shows information of APs nearby. You may choose one of these APs connecting or adding it to profile.

	SSID	BSSID	RSSI	Chan nel	Encrypti on	Authentica tion
<input checked="" type="radio"/>	TESTEST	00-11-E0-02-E2-16	100%	1	AES	WPA2-PSK
<input type="radio"/>	trendnetsky	00-C0-02-E7-D0-F0	55%	1	WEP	Open/Share
<input type="radio"/>	TRENDNETWH 1-N	00-14-D1-C3-BF-EB	39%	1	AES	WPA-PSK
<input type="radio"/>	trendnetma	00-C0-02-90-F4-62	34%	1	WEP	Open/Share
<input type="radio"/>	TRENDNETWH 2-N	00-14-D1-C6-C2-EF	44%	1	AES	WPA-PSK
<input type="radio"/>	POC LAB	00-1D-71-0B-7C-71	20%	1	TKIP; AES	WPA-PSK; WPA2- PSK
<input type="radio"/>	TrendnetSky2	00-14-D1-C0-64-19	39%	2	TKIP; AES	WPA-PSK
<input type="radio"/>	TRENDNETRM A-N	00-14-D1-C3-BD-DD	50%	3	AES	WPA2-PSK
<input type="radio"/>	TRENDnet	00-03-2F-39-37-10	34%	6	Not Use	OPEN
<input type="radio"/>	trendnetsky	00-C0-02-1A-AF-C1	10%	8	WEP	Open/Share
<input type="radio"/>	4238421 testin g router	00-14-D1-67-58-20	15%	11	Not Use	OPEN

Copyright © 2010 TRENDnet. All Rights Reserved.

### Connect

Click this button once the SSID is selected to immediately connect. This option only allows immediate connection and does not save any profiles.

### Rescan

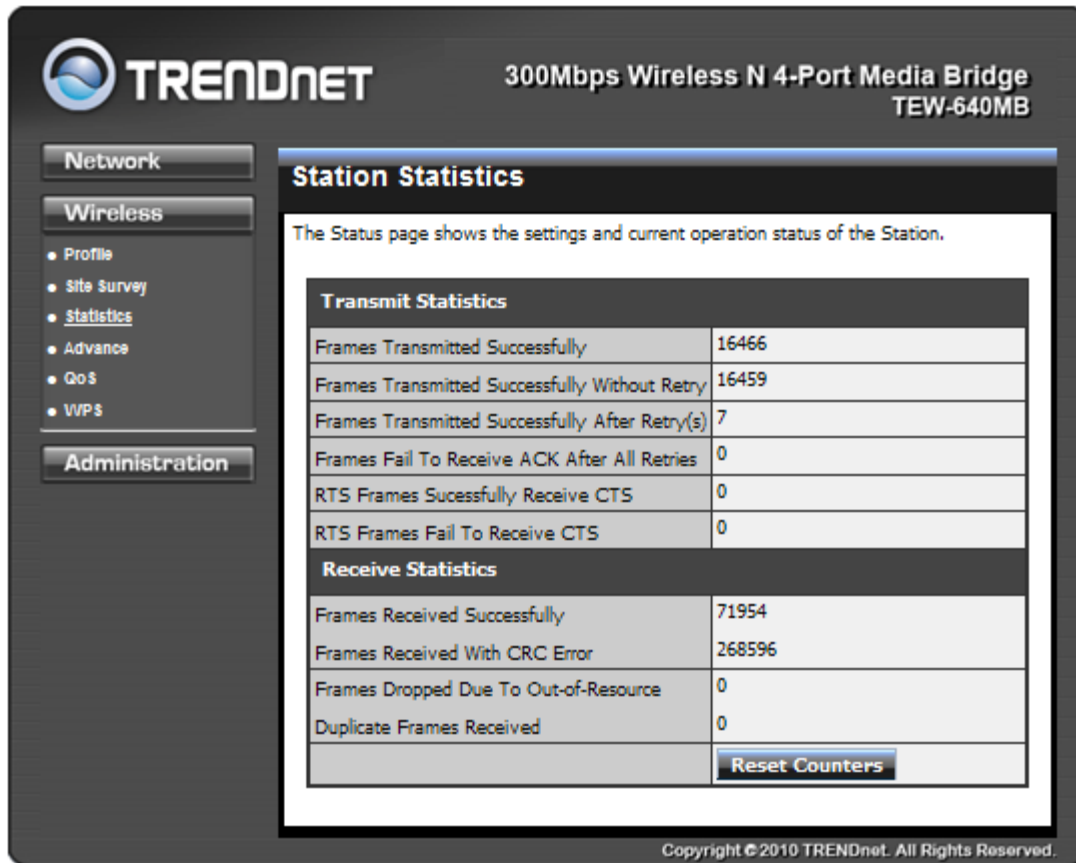
Use this option to scan for available wireless networks..

### Add Profile

Click this button to add the selected SSID to your wireless profile list. Your device will automatically connect to available saved profiles.

## Statistics

View the current operating status of the TEW-640MB, see the Transmit and Receive data.



**TRENDnet** 300Mbps Wireless N 4-Port Media Bridge  
TEW-640MB

**Station Statistics**

The Status page shows the settings and current operation status of the Station.

Transmit Statistics	
Frames Transmitted Successfully	16466
Frames Transmitted Successfully Without Retry	16459
Frames Transmitted Successfully After Retry(s)	7
Frames Fail To Receive ACK After All Retries	0
RTS Frames Successfully Receive CTS	0
RTS Frames Fail To Receive CTS	0

Receive Statistics	
Frames Received Successfully	71954
Frames Received With CRC Error	268596
Frames Dropped Due To Out-of-Resource	0
Duplicate Frames Received	0

[Reset Counters](#)

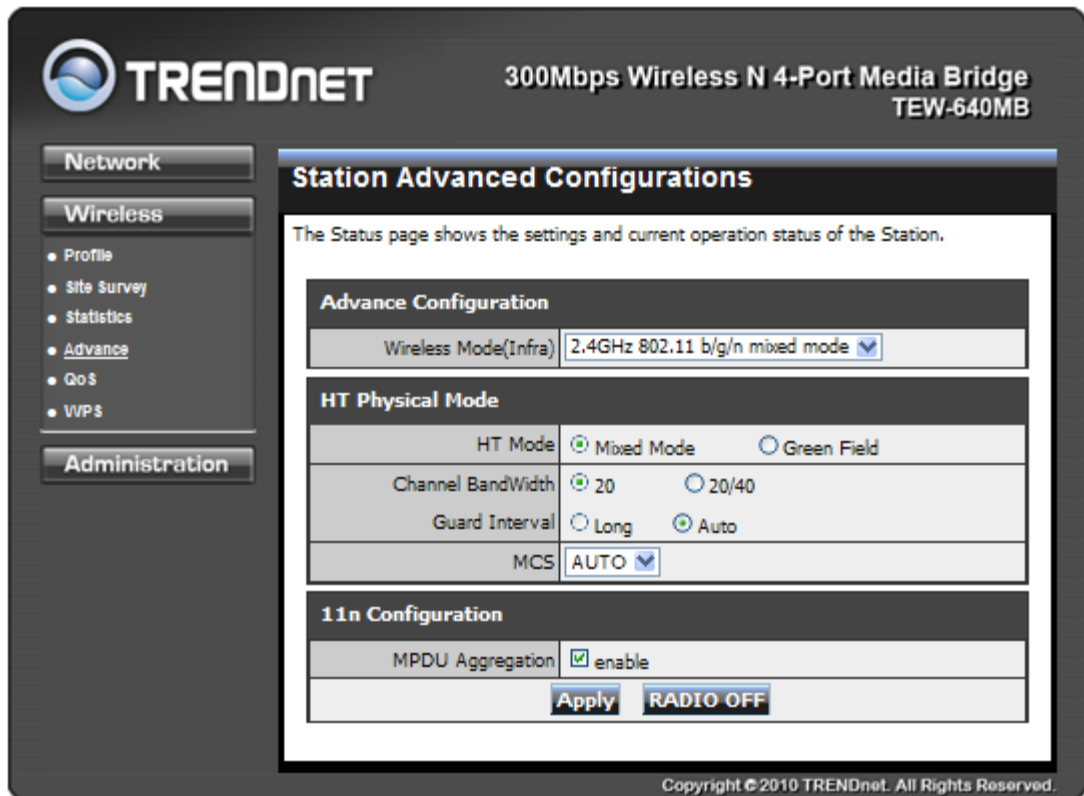
Copyright © 2010 TRENDnet. All Rights Reserved.

### Reset Counter

This option clears out the current statistics.

## Advance

Use this setting to adjust the wireless environment.



### Wireless Modes

#### 2.4GHz 802.11b/g mixed mode

This wireless mode works in the 2.4GHz frequency range and will allow both wireless b and wireless g client to connect and access the TEW-640MB at 11Mbps for wireless b, at 54Mbps for wireless g and share access at the same time. Although the wireless b/g operates in the 2.4GHz frequency, it will allow the use of other 2.4GHz client devices (Wireless n/g @ 54Mbps) to connect and access at the same time.

#### 2.4GHz 802.11 n only

This wireless mode works in the 2.4GHz frequency range and will only allow the use of wireless n client devices to connect and access the TEW-640MB. Although the wireless n operates in the 2.4GHz frequency, this mode will only permit wireless n client devices to work and will exclude any other wireless mode and devices that are not wireless n only.

#### 2.4 GHz 802.11b/g/n mixed mode

This wireless mode works in the 2.4GHz frequency range and will only allow the use of wireless g client devices to connect and access the TEW-640MB at 11Mbps for wireless b,

54Mbps for wireless g and up to 150Mbps transmitting/300Mbps receiving for wireless n and share access at the same time.

### **TX Rate**

Select the desire transmitting rate on the adapter. For best performance, please leave the selection on Auto.

### **HT Mode**

**Mixed Mode:** In this mode packets are transmitted with a preamble compatible with the legacy 802.11g/n, the rest of the packet has a new format. In this mode the receiver shall be able to decode both the Mixed Mode packets and legacy packets.

**Green Field:** In this mode high throughput packets are transmitted without a legacy compatible part.

### **Channel Bandwidth**

Set channel width of wireless radio.

20 Channel Width = 20 MHz

20/40 Channel Width = 20/40 MHz (additional channel provides better performance)

### **Guard Interval**

Support Short/Long GI, the purpose of the guard interval is to introduce immunity to propagation delays, echoes and reflections, to which digital data is normally very sensitive.

Long

Auto

Using "Auto" option can increase throughput. However, it can also increase error rate in some installations, due to increased sensitivity to radio-frequency reflections. Select the option that works best for your installation.

### **MCS**

Fix MCS rate for HT rate. (Auto, 0~32)

The Modulation and Coding Scheme (MCS) is a value that determines the modulation, coding and number of spatial channels.

This parameter represents transmission rate. By default (Auto) the fastest possible transmission rate will be selected. You have the option of selecting the speed if necessary.

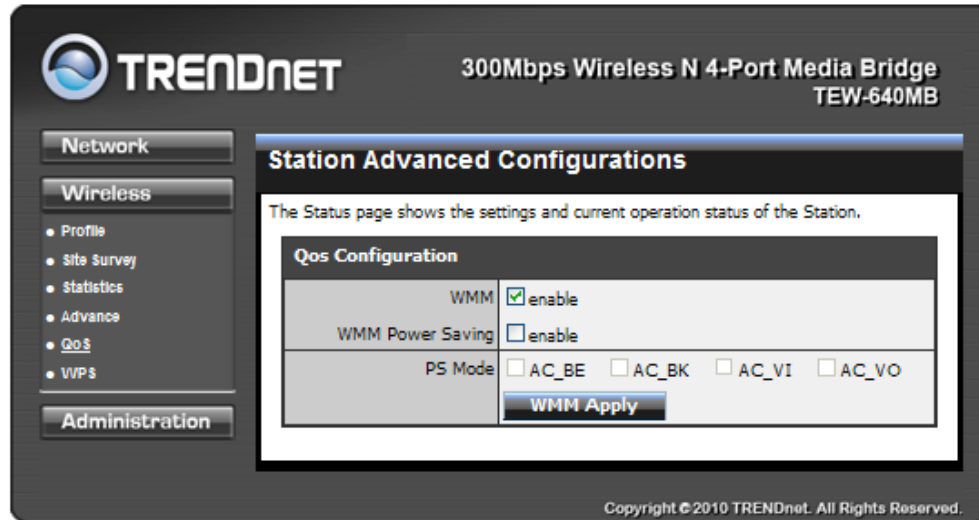
### **MPDU Aggregation**

Select this option to enable MPDU aggregation

### **RADIO OFF**

Click this button to turn off the wireless radio.

## QoS



### WMM (Wireless Multi-Media)

Use this feature allows wireless devices to take advantage of the wireless environment over other wireless devices.

### WMM Power Saving

An option that allows wireless clients such as notebooks or Laptops to save battery life by sending less transmission during idle times. Add a check mark to enable this option.

### PS Mode

Used for specific application when using WMM Power Saving mode is enabled, use this feature to help with Quality of Service (QoS) settings; these settings are polled by the priority given to the option in this section.

AC\_BE= Best Effort

AC\_BK= Background

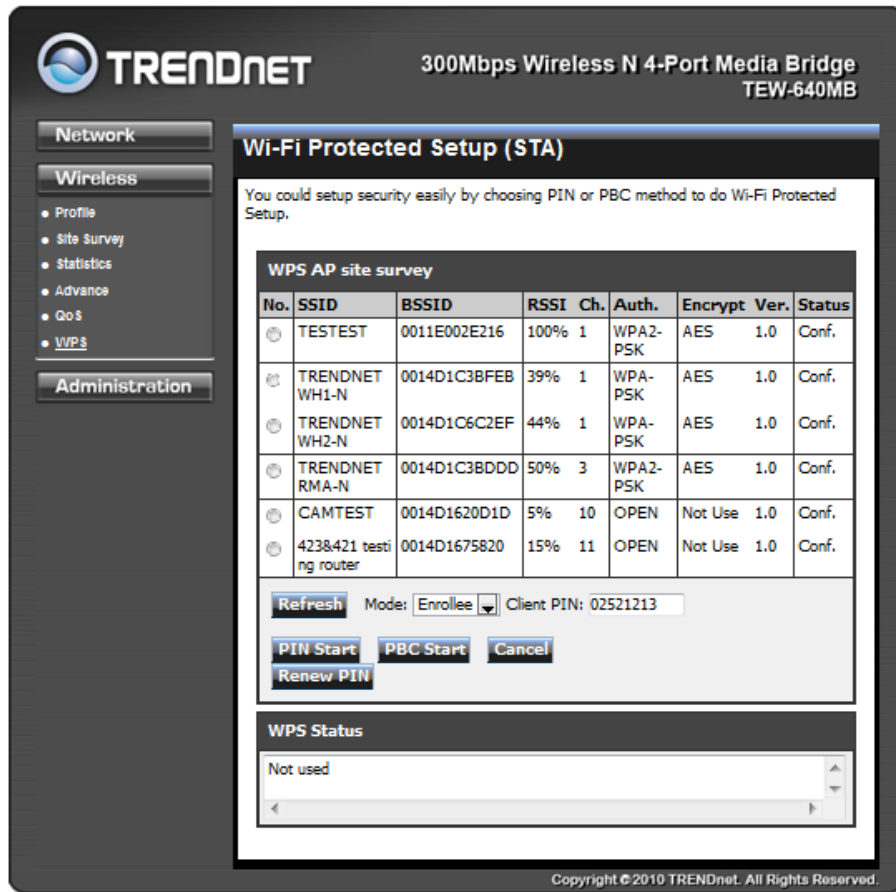
AC\_VI= Video signal

AC\_VO=Voice signal

The options allow users to select which Access Category is needed to turn on while the power saving mode is enabled.

# WPS

You can setup security easily by choosing PIN or PBC method to do Wi-Fi Protected Setup.



## PIN Start or PBC Start

Enable the WPS feature.

## PIN Settings

A PIN is a unique number that can be used to add to the router and use that as an authentication key to join the existing wireless network.

### Client PIN

Shows the current value of the adapter.

### Renew PIN

Create a random number that is a valid PIN. This becomes the adapter's PIN. You can then copy this PIN to the wireless router's WPS section.

## PBC Settings

The push button method can be used to allow wireless clients to connect to the router without entering/remember any encryption keys. The user can use the PBC method by pressing the WPS button on the side of the router or select the **Start PBC** option here.

# Administrator

## Wizard

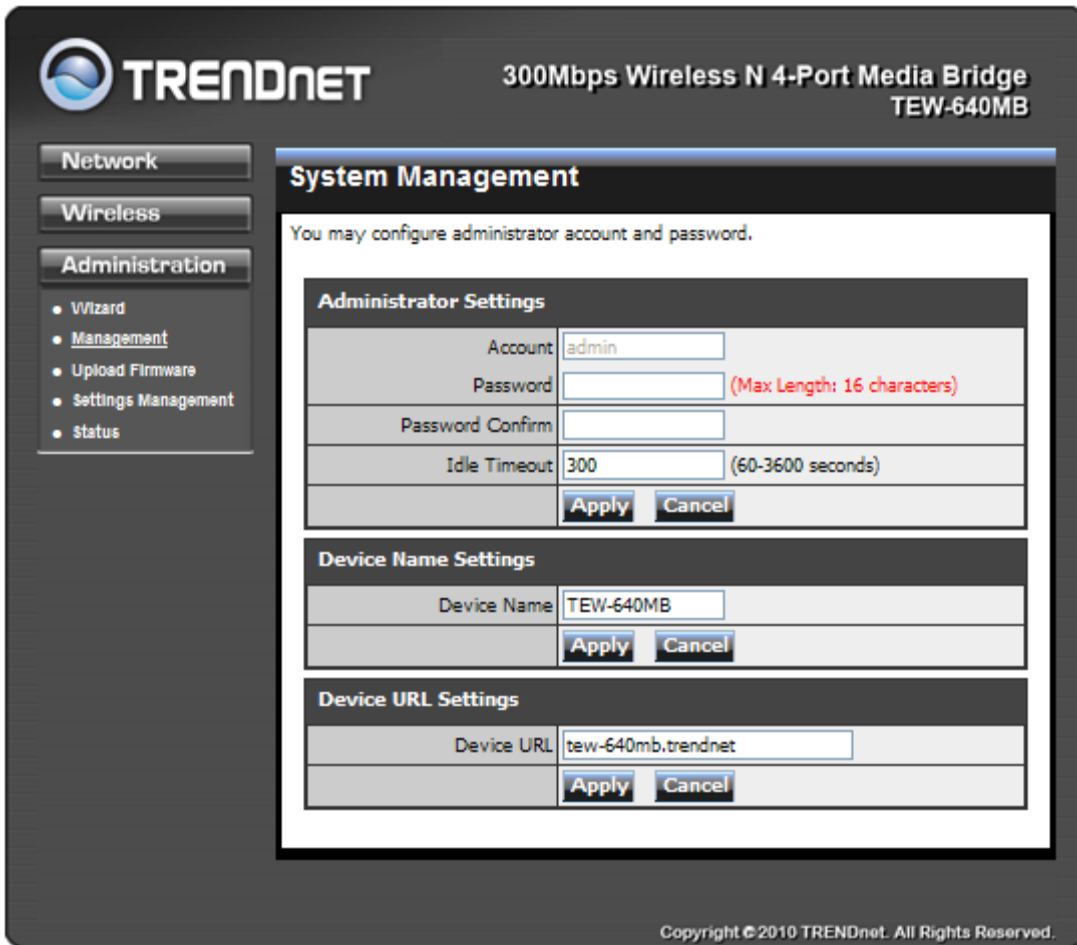
You could use Wizard to help you setting TEW-640MB again.





# Management

At this page, you can configure administrator account and password.



## Password

This option allows you to change the login password.

## Device Name

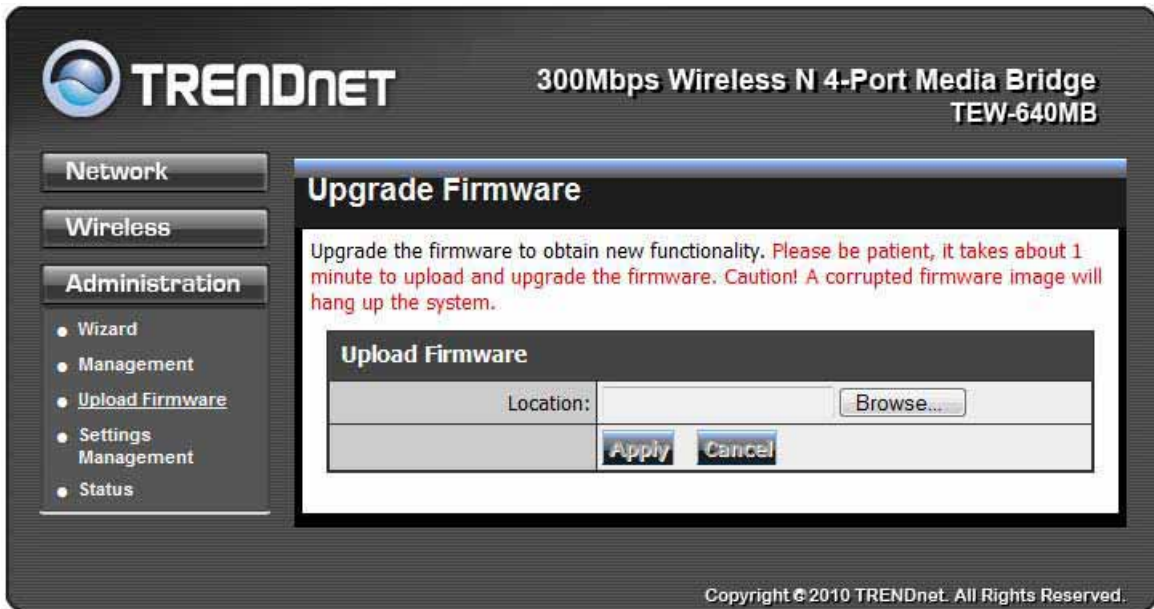
Use this option to change the name of your device that will be used on your network.

## Device URL

This option allows you to change the login URL of the device. It is advisable to only change the default URL of "tew-640MB" leaving ".trendnet"

## Upload Firmware

By assigning firmware location, you can upload firmware at this page.

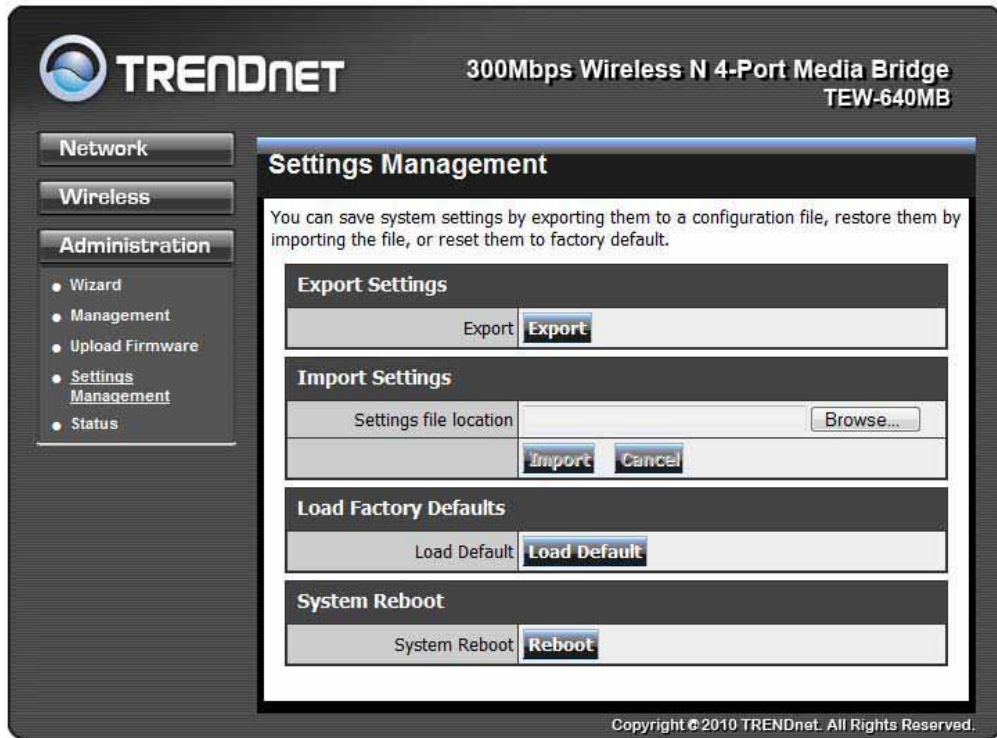


Once you have a firmware saved on your computer, use this option upload the firmware. Click on **Browse** and select the firmware file, then click **Apply** to upload the file into the adapter.

**Note:** Any disruption during the firmware upgrade process can damage the device. It is recommended that this process is conducted on a wired computer and not wireless.

# Setting Management

You can save system settings by exporting them to a configuration file, restore them by importing the file, or reset them to factory default.



## Export Settings

This option allows you to export and then save the router's configuration to a file on your computer. Be sure to save the configuration before performing a firmware upgrade.

## Import Settings

Use this option to restore previously saved router configuration settings.

## Load Factory Defaults

This option restores all configuration settings back to the settings that were in effect at the time the router was shipped from the factory. Any settings that have not been saved will be lost. If you want to save your router configuration settings, use the Export Settings option above.

## System Reboot

This restarts the router. It is useful for restarting when you are not near the device.

# Status

You can check system information and network configurations on this page.

**TRENDnet** 300Mbps Wireless N 4-Port Media Bridge  
TEW-640MB

**Network**  
**Wireless**  
**Administration**

- Wizard
- Management
- Upload Firmware
- Settings Management
- **Status**

### Status

The device status.

System Info	
Firmware Version	0.0.0.215, 25-Oct-2010
System Up Time	0:30:0
MAC Address	00:11:E0:03:D8:D9

Local Network	
Connected Type	DHCP Client
MAC Address	00:11:E0:03:D8:D9
IP Address	192.168.10.100
Subnet Mask	255.255.255.0

Wireless LAN	
Wireless Radio	ON
MAC Address	00:11:E0:03:D8:D9
Security Mode	WPA2-PSK, AES

Link Status	
Status	TESTEST <--> 00-11-E0-02-E2-16
Extra Info	Link is Up
Channel	1 <--> 2412000 KHz ; Central Channel: 3
Link Quality	Good 84%
Signal Strength	Good 100%
Noise Level	Strength 100%
Channel BandWidth	40
Guard Interval	long
MCS	15

Copyright © 2010 TRENDnet. All Rights Reserved.

# Glossary

## A

### **Access Control List**

ACL. This is a database of network devices that are allowed to access resources on the network.

### **Access Point**

AP. Device that allows wireless clients to connect to it and access the network

### **Address Resolution Protocol**

ARP. Used to map MAC addresses to IP addresses so that conversions can be made in both directions.

### **Advanced Encryption Standard**

AES. Government encryption standard

### **Alphanumeric**

Characters A-Z and 0-9

### **Antenna**

Used to transmit and receive RF signals.

### **ASCII**

American Standard Code for Information Interchange. This system of characters is most commonly used for text files

### **Attenuation**

The loss in strength of digital and analog signals. The loss is greater when the signal is being transmitted over long distances.

### **Authentication**

To provide credentials, like a Password, in order to verify that the person or device is really who they are claiming to be

### **Automatic Private IP Addressing**

APIPA. An IP address that that a Windows computer will assign itself when it is configured to obtain an IP address automatically but no DHCP server is available on the network

## B

### **Backward Compatible**

The ability for new devices to communicate and interact with older legacy devices to guarantee interoperability

**Bandwidth**

The maximum amount of bytes or bits per second that can be transmitted to and from a network device

**Beacon**

A data frame by which one of the stations in a Wi-Fi network periodically broadcasts network control data to other wireless stations.

**Bit rate**

The amount of bits that pass in given amount of time

**Bit/sec**

Bits per second

**BOOTP**

Bootstrap Protocol. Allows for computers to be booted up and given an IP address with no user intervention

**Broadcast**

Transmitting data in all directions at once

**Browser**

A program that allows you to access resources on the web and provides them to you graphically

**C****CAT 5**

Category 5. Used for 10/100 Mbps or 1Gbps Ethernet connections

**Client**

A program or user that requests data from a server

**Collision**

When do two devices on the same Ethernet network try and transmit data at the exact same time.

**Cookie**

Information that is stored on the hard drive of your computer that holds your preferences to the site that gave your computer the cookie

**D****Data**

Information that has been translated into binary so that it can be processed or moved to another device

**Data-Link layer**

The second layer of the OSI model. Controls the movement of data on the physical link of a network

**dBd**

Decibels related to dipole antenna

**dBi**

Decibels relative to isotropic radiator

**dBm**

Decibels relative to one milliwatt

**Decrypt**

To unscramble an encrypted message back into plain text

**Default**

A predetermined value or setting that is used by a program when no user input has been entered for this value or setting

**DHCP**

Dynamic Host Configuration Protocol: Used to automatically assign IP addresses from a predefined pool of addresses to computers or devices that request them

**Digital certificate:**

An electronic method of providing credentials to a server in order to have access to it or a network

**Direct Sequence Spread Spectrum**

DSSS: Modulation technique used by 802.11b wireless devices

**DNS**

Domain Name System: Translates Domain Names to IP addresses

**Domain name**

A name that is associated with an IP address

**Download**

To send a request from one computer to another and have the file transmitted back to the requesting computer

**Duplex**

Sending and Receiving data transmissions at the same time

**Dynamic IP address**

IP address that is assigned by a DHCP server and that may change. Cable Internet providers usually use this method to assign IP addresses to their customers.

**E****EAP**

Extensible Authentication Protocol

**Encryption**

Converting data into cyphertext so that it cannot be easily read

**Ethernet**

The most widely used technology for Local Area Networks.

## **F**

### **File server**

A computer on a network that stores data so that the other computers on the network can all access it

### **File sharing**

Allowing data from computers on a network to be accessed by other computers on the network with different levels of access rights

### **Firewall**

A device that protects resources of the Local Area Network from unauthorized users outside of the local network

### **Firmware**

Programming that is inserted into a hardware device that tells it how to function

### **Fragmentation**

Breaking up data into smaller pieces to make it easier to store

### **FTP**

File Transfer Protocol. Easiest way to transfer files between computers on the Internet

### **Full-duplex**

Sending and Receiving data at the same time

## **G**

### **Gain**

The amount an amplifier boosts the wireless signal

### **Gateway**

A device that connects your network to another, like the internet

### **Gbps**

Gigabits per second

### **Gigabit Ethernet**

Transmission technology that provides a data rate of 1 billion bits per second

### **GUI**

Graphical user interface

## **H**

### **Half-duplex**

Data cannot be transmitted and received at the same time

### **Hashing**

Transforming a string of characters into a shorter string with a predefined length

### **Hexadecimal**

Characters 0-9 and A-F



**Hop**

The action of data packets being transmitted from one AP to another

**Host**

Computer on a network

**HTTP**

Hypertext Transfer Protocol is used to transfer files from HTTP servers (web servers) to HTTP clients (web browsers)

**HTTPS**

HTTP over SSL is used to encrypt and decrypt HTTP transmissions

**Hub**

A networking device that connects multiple devices together

**I****ICMP**

Internet Control Message Protocol

**IEEE**

Institute of Electrical and Electronics Engineers

**IGMP**

Internet Group Management Protocol is used to make sure that computers can report their multicast group membership to adjacent APs

**IIS**

Internet Information Server is a WEB server and FTP server provided by Microsoft

**Infrastructure**

In terms of a wireless network, this is when wireless clients use an Access Point to gain access to the network

**Internet**

A system of worldwide networks which use TCP/IP to allow for resources to be accessed from computers around the world

**Internet Explorer**

A World Wide Web browser created and provided by Microsoft

**Internet Protocol**

The method of transferring data from one computer to another on the Internet

**Internet Protocol Security**

IPsec provides security at the packet processing layer of network communication

**Internet Service Provider**

An ISP provides access to the Internet to individuals or companies

**Intranet**

A private network

**Intrusion Detection**

A type of security that scans a network to detect attacks coming from inside and outside of the network

**IP**

Internet Protocol

**IP address**

A 32-bit number, when talking about Internet Protocol Version 4, that identifies each computer that transmits data on the Internet or on an Intranet

**IPsec**

Internet Protocol Security

**IPX**

Internetwork Packet Exchange is a networking protocol developed by Novell to enable their Netware clients and servers to communicate

**ISP**

Internet Service Provider

**J****Java**

A programming language used to create programs and applets for web pages

**K****Kbps**

Kilobits per second

**Kbyte**

Kilobyte

**L****LAN**

Local Area Network

**Latency**

The amount of time that it takes a packet to get from the one point to another on a network. Also referred to as delay

**LED**

Light Emitting Diode

**Legacy**

Older devices or technology

**Local Area Network**

A group of computers in a building that usually access files from a server

**LPR/LPD**

"Line Printer Requestor"/"Line Printer Daemon". A TCP/IP protocol for transmitting streams of printer data.

## **L2TP**

Layer 2 Tunneling Protocol

## **M**

### **MAC address**

A unique hardware ID assigned to every Ethernet adapter by the manufacturer.

### **Mbps**

Megabits per second

### **MDI**

Medium Dependent Interface is an Ethernet port for a connection to a straight-through cable

### **MDIX**

Medium Dependent Interface Crossover, is an Ethernet port for a connection to a crossover cable

### **MIB**

Management Information Base is a set of objects that can be managed by using SNMP

### **Modem**

A device that Modulates digital signals from a computer to an analog signal in order to transmit the signal over phone lines. It also Demodulates the analog signals coming from the phone lines to digital signals for your computer

### **MPPE**

Microsoft Point-to-Point Encryption is used to secure data transmissions over PPTP connections

### **MTU**

Maximum Transmission Unit is the largest packet that can be transmitted on a packet-based network like the Internet

### **Multicast**

Sending data from one device to many devices on a network

## **N**

### **NAT**

Network Address Translation allows many private IP addresses to connect to the Internet, or another network, through one IP address

### **NetBEUI**

NetBIOS Extended User Interface is a Local Area Network communication protocol. This is an updated version of NetBIOS

### **NetBIOS**

## Network Basic Input/Output System

### **Netmask**

Determines what portion of an IP address designates the Network and which part designates the Host

### **Network Interface Card**

A card installed in a computer or built onto the motherboard that allows the computer to connect to a network

### **Network Layer**

The third layer of the OSI model which handles the routing of traffic on a network

### **Network Time Protocol**

Used to synchronize the time of all the computers in a network

### **NIC**

Network Interface Card

### **NTP**

Network Time Protocol

## O

### **OFDM**

Orthogonal Frequency-Division Multiplexing is the modulation technique for both 802.11a and 802.wireless g

### **OSI**

Open Systems Interconnection is the reference model for how data should travel between two devices on a network

### **OSPF**

Open Shortest Path First is a routing protocol that is used more than RIP in larger scale networks because only changes to the routing table are sent to all the other APs in the network as opposed to sending the entire routing table at a regular interval, which is how RIP functions

## P

### **Password**

A sequence of characters that is used to authenticate requests to resources on a network

### **Personal Area Network**

The interconnection of networking devices within a range of 10 meters

### **Physical layer**

The first layer of the OSI model. Provides the hardware means of transmitting electrical signals on a data carrier

### **Ping**

A utility program that verifies that a given Internet address exists and can receive messages. The utility sends a control packet to the given address and waits for a response.

### **PoE**

Power over Ethernet is the means of transmitting electricity over the unused pairs in a category 5 Ethernet cable

### **Port**

A logical channel endpoint in a network. A computer might have only one physical channel (its Ethernet channel) but can have multiple ports (logical channels) each identified by a number.

### **PPP**

Point-to-Point Protocol is used for two computers to communicate with each other over a serial interface, like a phone line

### **PPPoE**

Point-to-Point Protocol over Ethernet is used to connect multiple computers to a remote server over Ethernet

### **PPTP**

Point-to-Point Tunneling Protocol is used for creating VPN tunnels over the Internet between two networks

### **Preamble**

Used to synchronize communication timing between devices on a network

### **Q**

### **QoS**

Quality of Service

### **R**

### **RADIUS**

Remote Authentication Dial-In User Service allows for remote users to dial into a central server and be authenticated in order to access resources on a network

### **Reboot**

To restart a computer and reload its operating software or firmware from nonvolatile storage.

### **Rendezvous**

Apple's version of UPnP, which allows for devices on a network to discover each other and be connected without the need to configure any settings

### **Repeater**

Retransmits the signal of an Access Point in order to extend its coverage

### **RIP**

Routing Information Protocol is used to synchronize the routing table of all the APs on a network

**RJ-11**

The most commonly used connection method for telephones

**RJ-45**

The most commonly used connection method for Ethernet

**RS-232C**

The interface for serial communication between computers and other related devices

**RSA**

Algorithm used for encryption and authentication

**S**

**Server**

A computer on a network that provides services and resources to other computers on the network

**Session key**

An encryption and decryption key that is generated for every communication session between two computers

**Session layer**

The fifth layer of the OSI model which coordinates the connection and communication between applications on both ends

**Simple Mail Transfer Protocol**

Used for sending and receiving email

**Simple Network Management Protocol**

Governs the management and monitoring of network devices

**SIP**

Session Initiation Protocol. A standard protocol for initiating a user session that involves multimedia content, such as voice or chat.

**SMTP**

Simple Mail Transfer Protocol

**SNMP**

Simple Network Management Protocol

**SOHO**

Small Office/Home Office

**SPI**

Stateful Packet Inspection

**SSH**

Secure Shell is a command line interface that allows for secure connections to remote computers

## **SSID**

Service Set Identifier is a name for a wireless network

## **Stateful inspection**

A feature of a firewall that monitors outgoing and incoming traffic to make sure that only valid responses to outgoing requests are allowed to pass through the firewall

## **Subnet mask**

Determines what portion of an IP address designates the Network and which part designates the Host

## **Syslog**

System Logger -- a distributed logging interface for collecting in one place the logs from different sources. Originally written for UNIX, it is now available for other operating systems, including Windows.

## **I**

### **TCP**

Transmission Control Protocol

### **TCP/IP**

Transmission Control Protocol/Internet Protocol

### **TCP Raw**

A TCP/IP protocol for transmitting streams of printer data.

### **TFTP**

Trivial File Transfer Protocol is a utility used for transferring files that is simpler to use than FTP but with less features

## **Throughput**

The amount of data that can be transferred in a given time period

## **Traceroute**

A utility displays the routes between your computer and specific destination

## **U**

### **UDP**

User Datagram Protocol

## **Unicast**

Communication between a single sender and receiver

## **Universal Plug and Play**

A standard that allows network devices to discover each other and configure themselves to be a part of the network

## **Upgrade**

To install a more recent version of a software or firmware product

### **Upload**

To send a request from one computer to another and have a file transmitted from the requesting computer to the other

### **UPnP**

Universal Plug and Play

### **URL**

Uniform Resource Locator is a unique address for files accessible on the Internet

### **USB**

Universal Serial Bus

### **UTP**

Unshielded Twisted Pair

## **V**

### **Virtual Private Network**

VPN: A secure tunnel over the Internet to connect remote offices or users to their company's network

### **VLAN**

Virtual LAN

### **Voice over IP**

Sending voice information over the Internet as opposed to the PSTN

### **VoIP**

Voice over IP

## **W**

### **Wake on LAN**

Allows you to power up a computer through its Network Interface Card

### **WAN**

Wide Area Network

### **WCN**

Windows Connect Now. A Microsoft method for configuring and bootstrapping wireless networking hardware (access points) and wireless clients, including PCs and other devices.

### **WDS**

Wireless Distribution System. A system that enables the interconnection of access points wirelessly.

### **Web browser**

A utility that allows you to view content and interact with all of the information on the World Wide Web



## **WEP**

Wired Equivalent Privacy is security for wireless networks that is supposed to be comparable to that of a wired network

## **Wi-Fi**

Wireless Fidelity

## **Wi-Fi Protected Access**

An updated version of security for wireless networks that provides authentication as well as encryption

## **Wide Area Network**

The larger network that your LAN is connected to, which may be the Internet itself, or a regional or corporate network

## **Wireless ISP**

A company that provides a broadband Internet connection over a wireless connection

## **Wireless LAN**

Connecting to a Local Area Network over one of the 802.11 wireless standards

## **WISP**

Wireless Internet Service Provider

## **WLAN**

Wireless Local Area Network

## **WPA**

Wi-Fi Protected Access. A Wi-Fi security enhancement that provides improved data encryption, relative to WEP.

## **X**

### **xDSL**

A generic term for the family of digital subscriber line (DSL) technologies, such as ADSL, HDSL, RADSL, and SDSL.

## **Y**

### **Yagi antenna**

A directional antenna used to concentrate wireless signals on a specific location

## **Z**

# Specifications

<b>Hardware</b>	
<b>Standards</b>	IEEE 802.11b, IEEE 802.11g, and IEEE 802.11n
<b>Interface</b>	4 x 10/100Mbps Auto-MDIX LAN ports
<b>LED Indicator</b>	LAN 1~4, Wireless, WPS, Power
<b>Power</b>	12V DC 0.5A power adapter
<b>Buttons</b>	Reset button – restores factory default settings WPS button – enables WPS function
<b>Power Consumption</b>	4 Watts (max)
<b>Dimensions (LxWxH)</b>	60 x 118 x 135 mm (2.4 x 4.6 x 5.3 in.)
<b>Weight</b>	170 g (6 oz.)
<b>Temperature</b>	Operating: 0° ~ 40° C (32° ~ 104° F) Storage: -20° ~ 65° C (-4° ~ 149° F)
<b>Humidity</b>	Max. 90% (non-condensing)
<b>Certifications</b>	CE, FCC
<b>Wireless</b>	
<b>Frequency</b>	2.412 ~ 2.472 GHz
<b>Antenna</b>	2 built-in antennas
<b>Data Rate (auto fallback)</b>	802.11b: up to 11Mbps 802.11g: up to 54Mbps 802.11n: up to 300Mbps
<b>Output Power</b>	802.11b: 18.15dBm (typical) 802.11g: 15.63dBm (typical) 802.11n: 15.63dBm (typical)
<b>Receiving Sensitivity</b>	802.11b: -84dBm (typical) 802.11g: -73dBm (typical) 802.11n: -69dBm (typical)
<b>Encryption</b>	64/128-bit WEP , WPA/WPA2-PSK
<b>Channels</b>	1~11 (FCC), 1~13 (ETSI)

# Limited Warranty

TRENDnet warrants its products against defects in material and workmanship, under normal use and service, for the following lengths of time from the date of purchase.

TEW-640MB – 3 Years Warranty

**AC/DC Power Adapter, Cooling Fan, and Power Supply carry 1 year warranty.**

If a product does not operate as warranted during the applicable warranty period, TRENDnet shall reserve the right, at its expense, to repair or replace the defective product or part and deliver an equivalent product or part to the customer. The repair/replacement unit's warranty continues from the original date of purchase. All products that are replaced become the property of TRENDnet. Replacement products may be new or reconditioned. TRENDnet does not issue refunds or credit. Please contact the point-of-purchase for their return policies.

TRENDnet shall not be responsible for any software, firmware, information, or memory data of customer contained in, stored on, or integrated with any products returned to TRENDnet pursuant to any warranty.

There are no user serviceable parts inside the product. Do not remove or attempt to service the product by any unauthorized service center. This warranty is voided if (i) the product has been modified or repaired by any unauthorized service center, (ii) the product was subject to accident, abuse, or improper use (iii) the product was subject to conditions more severe than those specified in the manual.

Warranty service may be obtained by contacting TRENDnet within the applicable warranty period and providing a copy of the dated proof of the purchase. Upon proper submission of required documentation a Return Material Authorization (RMA) number will be issued. An RMA number is required in order to initiate warranty service support for all TRENDnet products. Products that are sent to TRENDnet for RMA service must have the RMA number marked on the outside of return packages and sent to TRENDnet prepaid, insured and packaged appropriately for safe shipment. Customers shipping from outside of the USA and Canada are responsible for return shipping fees. Customers shipping from outside of the USA are responsible for custom charges, including but not limited to, duty, tax, and other fees.

**WARRANTIES EXCLUSIVE:** IF THE TRENDNET PRODUCT DOES NOT OPERATE AS WARRANTED ABOVE,

THE CUSTOMER'S SOLE REMEDY SHALL BE, AT TRENDNET'S OPTION, REPAIR OR REPLACE. THE FOREGOING WARRANTIES AND REMEDIES ARE EXCLUSIVE AND ARE IN LIEU OF ALL OTHER WARRANTIES, EXPRESSED OR IMPLIED, EITHER IN FACT OR BY OPERATION OF LAW, STATUTORY OR OTHERWISE, INCLUDING WARRANTIES OF MERCHANTABILITY AND FITNESS FOR A PARTICULAR PURPOSE. TRENDNET NEITHER ASSUMES NOR AUTHORIZES ANY OTHER PERSON TO ASSUME FOR IT ANY OTHER LIABILITY IN CONNECTION WITH THE SALE, INSTALLATION MAINTENANCE OR USE OF TRENDNET'S PRODUCTS.

TRENDNET SHALL NOT BE LIABLE UNDER THIS WARRANTY IF ITS TESTING AND EXAMINATION DISCLOSE THAT THE ALLEGED DEFECT IN THE PRODUCT DOES NOT EXIST OR WAS CAUSED BY CUSTOMER'S OR ANY THIRD PERSON'S MISUSE, NEGLIGENCE, IMPROPER INSTALLATION OR TESTING, UNAUTHORIZED ATTEMPTS TO REPAIR OR MODIFY, OR ANY OTHER CAUSE BEYOND THE RANGE OF THE INTENDED USE, OR BY ACCIDENT, FIRE, LIGHTNING, OR OTHER HAZARD.

LIMITATION OF LIABILITY: TO THE FULL EXTENT ALLOWED BY LAW TRENDNET ALSO EXCLUDES FOR ITSELF AND ITS SUPPLIERS ANY LIABILITY, WHETHER BASED IN CONTRACT OR TORT (INCLUDING NEGLIGENCE), FOR INCIDENTAL, CONSEQUENTIAL, INDIRECT, SPECIAL, OR PUNITIVE DAMAGES OF ANY KIND, OR FOR LOSS OF REVENUE OR PROFITS, LOSS OF BUSINESS, LOSS OF INFORMATION OR DATA, OR OTHER FINANCIAL LOSS ARISING OUT OF OR IN CONNECTION WITH THE SALE, INSTALLATION, MAINTENANCE, USE, PERFORMANCE, FAILURE, OR INTERRUPTION OF THE POSSIBILITY OF SUCH DAMAGES, AND LIMITS ITS LIABILITY TO REPAIR, REPLACEMENT, OR REFUND OF THE PURCHASE PRICE PAID, AT TRENDNET'S OPTION. THIS DISCLAIMER OF LIABILITY FOR DAMAGES WILL NOT BE AFFECTED IF ANY REMEDY PROVIDED HEREIN SHALL FAIL OF ITS ESSENTIAL PURPOSE.

**Governing Law:** This Limited Warranty shall be governed by the laws of the state of California.

Some TRENDnet products include software code written by third party developers. These codes are subject to the GNU General Public License ("GPL") or GNU Lesser General Public License ("LGPL").

Go to <http://www.trendnet.com/gpl> or <http://www.trendnet.com> Download section and look for the desired TRENDnet product to access to the GPL Code or LGPL Code. These codes are distributed WITHOUT WARRANTY and are subject to the copyrights of the developers. TRENDnet does not provide technical support for these codes. Please go to <http://www.gnu.org/licenses/gpl.txt> or <http://www.gnu.org/licenses/lgpl.txt> for specific terms of each license.

PWP05202009v2



**TRENDNET**®

## Product Warranty Registration

Please take a moment to register your product online.  
Go to TRENDnet's website at <http://www.trendnet.com/register>