

BLUE GIGGA
BLE113-A-
V1

FCC ID:
QOQBLE113

Cell
Diversity
Antenna

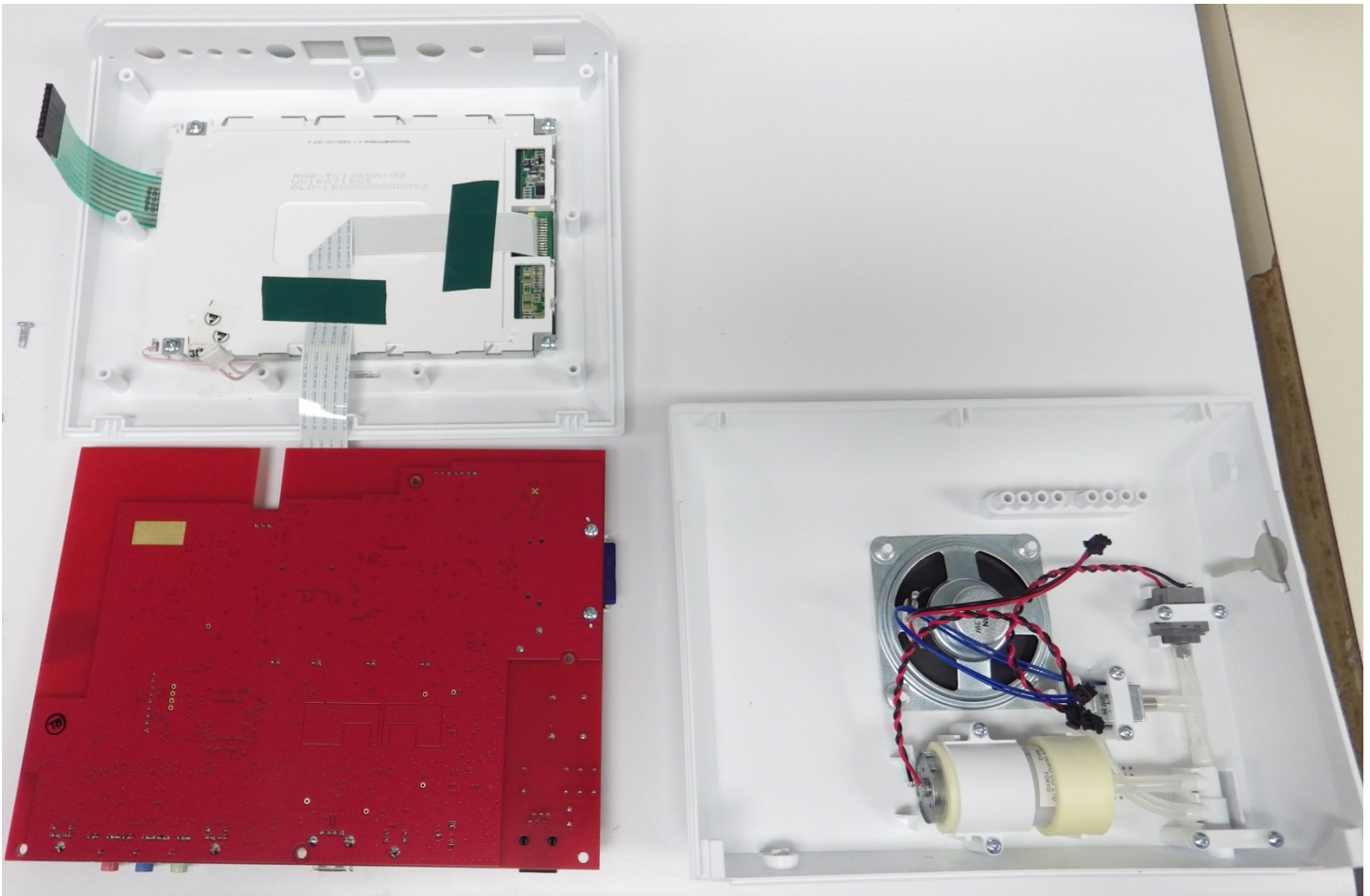
Cell Primary Antenna

Gemalto PLS8-X

FCC ID: QIPPLS8-X

T.I. CC2500

Antenova A5839



NOTE: The CD320 contains a total of three radios; The T.I. 2.4Ghz CC2500 chip; the BlueTooth module (BLUEGIGA BLE113-A-V1); and the cellular module (Gemalto PLS8-X). In addition, all three radios (Gemalto, BlueGiga and CC2500) will be powered but no two or any combination of the radios are allowed to transmit at the same time; only one radio is allowed to transmit at any one time.

Distances between antennas:

- 1) Antenna A5839 to Cell primary antenna is approximately 6 inches.
- 2) Antenna A5839 to BLUEGIGA antenna is approximately 9" inches.
- 3) Primary Cell Antenna to BLUEGIGA antenna is approximately 4.7 inches.
- 4) Cell Diversity Antenna to BLUEGIGA antenna is approximately 2.5 inches.
- 5) Closest distance from Cell Diversity Antenna to Cell Primary antenna is approximately 0.4 inches.
- 6) Cell Diversity Antenna to to Antenna A5839 is approximately 7.7 inches.