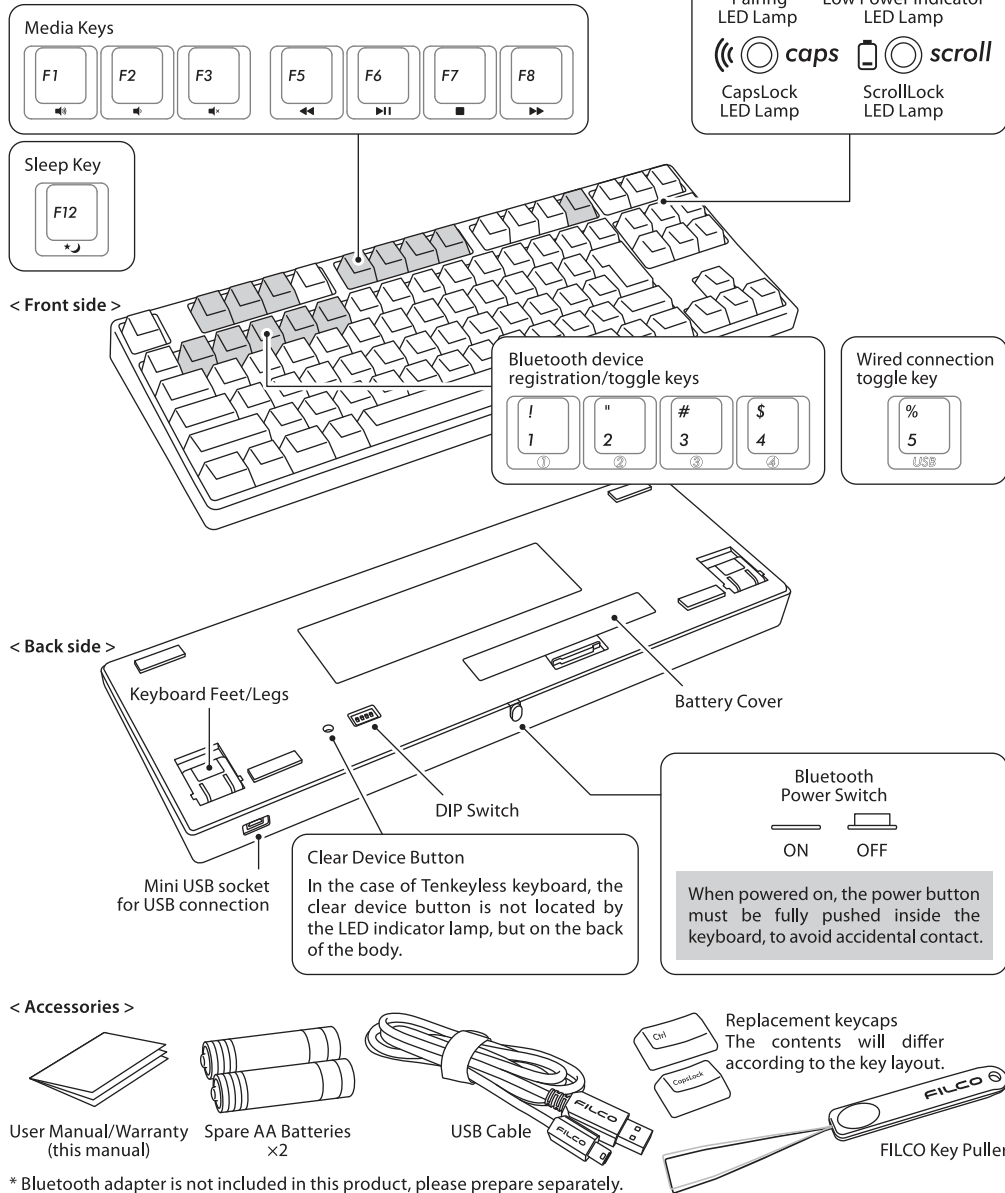


## ◆Parts and Accessories



## ◆Function of Switches/LED Indicator Lamps

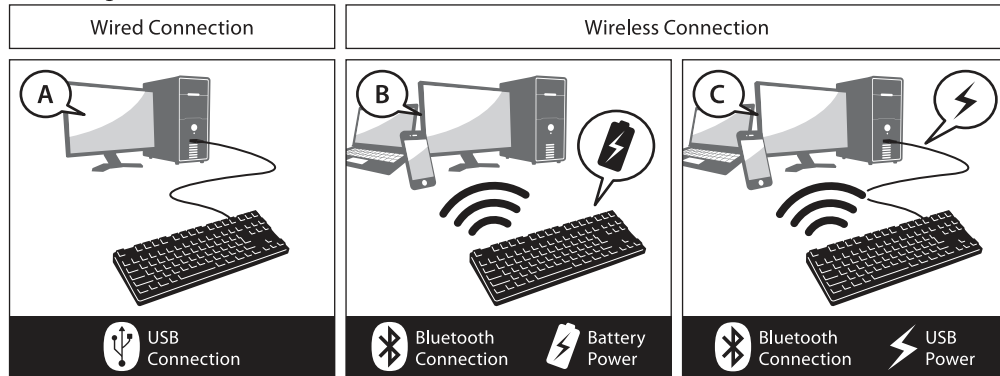
Bluetooth Power Switch	Located on the rear of the keyboard. When using Bluetooth to connect, this switch must be turned ON. This Bluetooth switch must be turned OFF under the following circumstances : Not using the Bluetooth connection for a long period of time, personal computer shutdown, or changed to using USB connection.	ON OFF
DIP Switch	Located on the base of the keyboard. May be used to change or temporarily stop the key usage. The default factory setting for all is OFF. For further understanding of related contents, please reference page 33.	ON 1 2 3 4
Clear Device Button	Delete registration, press re-register. The clear device button is on the back side of the Tenkeyless keyboard. During Bluetooth connection, press this button, and it will clear the registration information, and then switch to pairing mode. For further understanding of related contents, please reference page 29.	○
CapsLock LED Lamp cum Pairing LED Lamp	<ul style="list-style-type: none"> <li>• <b>During USB Connection</b> When the CapsLock key is enabled, this indicator lamp is blue.</li> <li>• <b>During Bluetooth Connection</b> During device toggle mode, pairing mode, and upon successful connection, this indicator lamp will either flash or light up. For further understanding of the details of the lit lamp modes, please reference page 25.</li> </ul>	caps
ScrollLock LED Lamp cum Low Power indicator LED Lamp	<ul style="list-style-type: none"> <li>• <b>During USB Connection</b> When the ScrollLock key is enabled, this indicator lamp is red.</li> <li>• <b>During Bluetooth Connection</b> 1) When the battery is exhausted, this red lamp will flash. When this LED lamp is flashing, replace the battery as soon as possible. Continued use will exhaust the battery power, and it will not be possible to maintain the voltage required by the Bluetooth connection, operations will become unstable. When the battery is totally exhausted, this LED indicator lamp will not light up and will not flash, and the keyboard will not response. *Battery Life : Approximately 6 months when used for 5 hours per day (alkaline batteries), but the batteries life will differ based on usage conditions and environmental factors.</li> <li>2) Entering into device toggle mode, pairing mode, upon successful connection this indicator lamps will either light up or flash. For further understanding of the details of lit lamp modes, please reference page 25.</li> </ul>	scroll
Media Key	Multi-Media function. When pressed simultaneously with the Fn key, may manage the playing of videos or music from the keyboard, as well as adjust the sound volume and so forth.	F1 ~ F8
Sleep Key	During USB connection, if this key is pressed simultaneously with the Fn key, the keyboard may control whether to enter or exit Windows sleep standby mode. For further understanding of related contents, please reference page 33. *This Bluetooth specification does not support the wakeup action during Bluetooth connection.	F12
Bluetooth Device Registration / Toggle Keys	<ul style="list-style-type: none"> <li>• Enter pairing mode from the device toggle mode (*reference page 25 [Bluetooth Connection Flow Diagram]), and press any device 1-4 to begin registration.</li> <li>• Press when switching connection device on the toggle mode. Each key connects one device, may register up to a total of four devices.</li> </ul>	1 4
Wired Connection Toggle Key	• When the power for the Bluetooth connection is supplied via the USB, press this key to switch from Bluetooth connection mode to USB cable mode.	5

[Regarding CapsLock, ScrollLock LED Indicator Lamps Display]

When using Bluetooth connection, regardless whether the power is supplied via the battery or USB, the CapsLock lamp and ScrollLock lamp on the keyboard will not light up.

## How to Connect

### ◆ Selecting Connection Methods



### ◆ Connect to Personal Computer Via Cable

#### USB Connection (As per diagram A)

May perform connection by using the USB cable supplied with this product. (Does not have recharging function for Ni-MN Rechargeable Batteries.)

When powering up the computer with the keyboard connected to a USB port the keyboard will connect in wired USB mode by simply pressing any key. This is because when Bluetooth and USB are both connected the keyboard will default to USB wired mode which is the priority connection. Normal operation can be started after second key is pressed.

\* When using USB connection, batteries are not required. Therefore, for prolong usage of USB connection, please remove the batteries.

\* When using USB connection, please turn off the Bluetooth power switch.



#### USB Connection LED Lamp Lit Modes

Mode • Operation	LED Lamp Lit Mode
<ul style="list-style-type: none"> <li>Upon connecting USB cable</li> <li>* Press any key on the keyboard</li> </ul>	<p>The LED indicator lamp will flash for about 4 seconds alternately between LED after which normal operation will be resumed.</p>
<ul style="list-style-type: none"> <li>When CapsLock key is enabled</li> </ul>	<p>CapsLock LED lamp lit</p>
<ul style="list-style-type: none"> <li>When ScrollLock key is enabled</li> </ul>	<p>ScrollLock LED lamp lit</p>

### ◆ Connect to Personal Computer Via Wireless

#### Bluetooth Connection (As per diagram B, C)

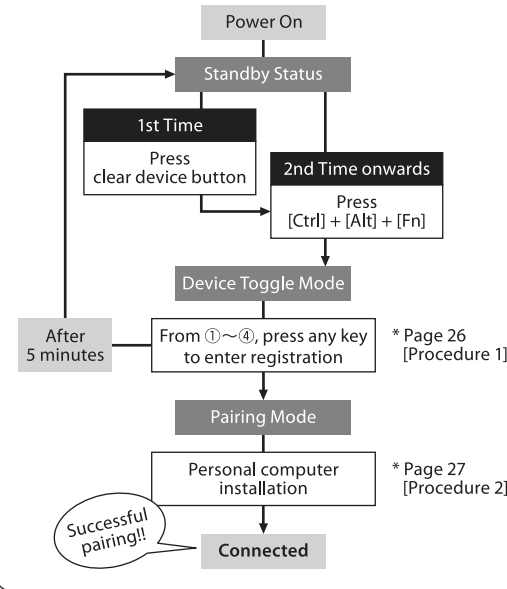
Using a Bluetooth adapter or a device embedded with Bluetooth function for the connection setup (pairing function), hence connecting to the personal computer.

This product does not include a Bluetooth adapter. Therefore, one must be purchased from the retail market, and after installing the Bluetooth adapter, connection setup may then be performed. When the personal computer has an embedded Bluetooth function, please enable the Bluetooth function.

This installation procedure must be done with an administrator account which is logon to listings and Control Panel in Classic View.

## Bluetooth® Connection Flow Diagram

\* After pairing, make sure a cable is disconnected when switching on the keyboard, press any key and the memory will automatically connect to the last used device.



Two options for Power Supply : one method is to use AA batteries (left page diagram B) and another method is to use USB connection (left page diagram C).

When using USB power supply, if the USB cable is unplugged, it will automatically switch to battery power. For further understanding of related contents, please reference page 30.

When the power is supplied through the USB port of the computer, press the wired connection toggle key (USB key) to enter device toggle mode, and at this instant, the Bluetooth connection will be disconnected and connection switched to USB. For further understanding of related contents, please reference page 31.

USB power supply may be via the USB port of the computer or the USB-AC power adapters (such as : USB charger) etc.. In addition, USB power supply does not have a rechargeable function for manganese batteries.

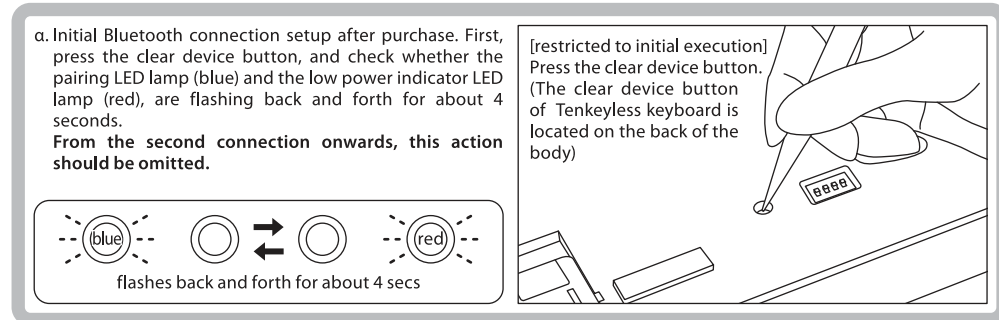
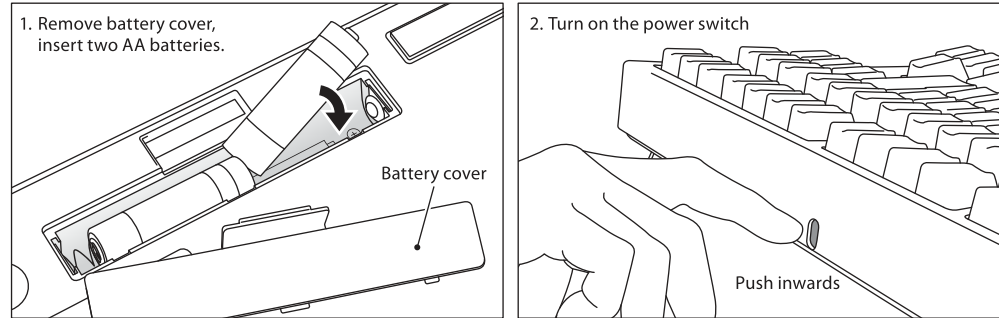


#### Bluetooth Connection LED Lamp Lit Modes

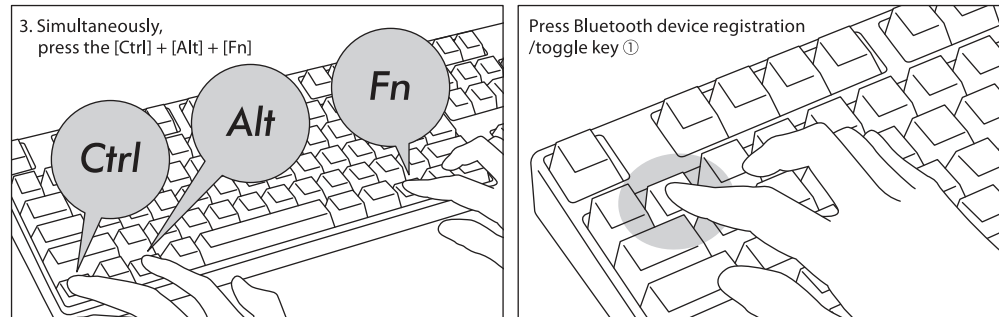
Mode • Operation	LED Lamp Lit Mode
<b>Device Toggle Mode</b> • [Ctrl] + [Alt] + [Fn] pressed simultaneously	<p>Both lamps will lit simultaneously for about 10 secs</p>
<b>Indicator for Change / Toggle Device ①</b> • when any one Bluetooth device registration/toggle keys ①~④ is pressed for already registered or not registered devices • when switching to USB power supply wired connection * page 31 • when clear device button is pressed • when USB cable is connected	<p>flashes blue and red back and forth for about 4 secs</p>
<b>Pairing Mode ... After ① is displayed, pairing LED lamp (blue) would flash for about 5 minutes</b> • when pairing mode is enabled	<p>Pairing LED lamp flashes for about 5 minutes</p>
<b>Indicator for Connection completed</b> • when pairing operation is completed • when Bluetooth connection is successful	<p>Both lamps simultaneously flashes 3 times</p>
<b>Indicator for Failed Connection ... After displaying the ①, pairing LED lamp (blue) flashes slowly for about 10 secs</b> • unable to locate installed device * page 29 • when the pairing information is deleted from the personal computer	<p>Pairing LED lamp flashes slowly for about 10 secs</p>
<b>Indicator for Low Power</b> • when the remaining power in the battery is insufficient	<p>Low Power Indicator LED lamp flashes</p>

## [Procedure 1] Switching to Pairing Mode from Keyboard

1. Insert the batteries into the keyboard. Please insert according to the label on the battery case; and take note of the directions for the positive and negative terminals.  
\*Power for the Bluetooth of this product may be supplied from the USB. But, for the initial Bluetooth connection setup, please start from the battery power supply. This is because prior to installation, all wired connections are regarded as USB connection.
2. Turn on the Bluetooth power switch.



3. Simultaneously, press the [Ctrl] + [Alt] + [Fn] keys on the keyboard to perform device toggle mode. The pairing LED lamp (blue) and the low power indicator LED lamp (red) will simultaneously light up for about 10 seconds.
4. Press any one of the Bluetooth device registration/toggle keys ①~④ (as per diagram, press key ①) to enter the registration device information.



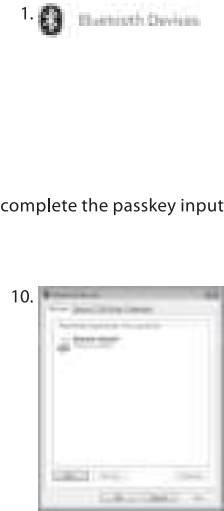
5. The pairing LED lamp (blue) and the low power indicator LED lamp (red) will flash back and forth for about 4 seconds. Upon entering pairing mode (computer identifying status), only the pairing LED lamp (blue) will remain flashing.
6. Continue next page [Procedure 2].  
\* When it is in the pairing mode, if the any key operation is not performed for 5 minutes, then the pairing LED lamp (blue) would go out and it would end the pairing mode and go back to the standby mode. Please go to step 3 and start over.

## [Procedure 2] Installing Bluetooth Device (Pairing Mode)

### Windows XP / Vista

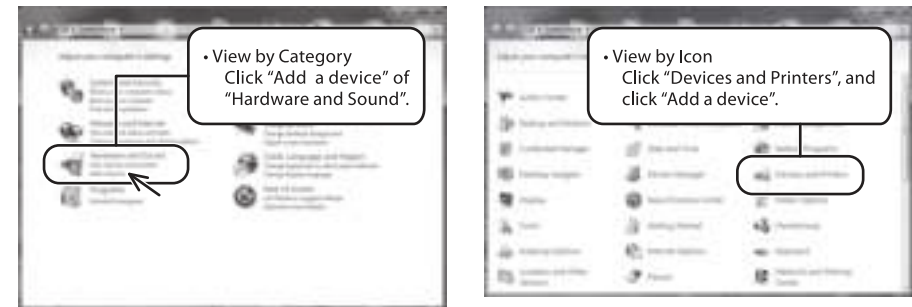
\*Pairing mode procedure is the same, but the displayed graphics are based on the OS, therefore, there will be minor discrepancies.

1. Control Panel > double-click the [Bluetooth Devices] icon
2. Bluetooth Devices > Devices tab > click [Add]
3. Open the Add Bluetooth Device Wizard dialog box.  
Tick [My device is set up and ready to be found.], and then click [Next].
4. Bluetooth device found.  
Select [Majestouch Convertible 2 New device], and then click [Next].
5. Add passkey for the device.  
Select [Choose a passkey for me], and then click [Next].
6. Passkey exchange between computer and keyboard.  
Please input the passkey using the numeric keys on the keyboard. Then press Enter. Ensure to complete the passkey input within 30 seconds.  
[Reference] When inputting passkey, the status will not be displayed on the screen.
7. When the passkey has been entered successfully, the Bluetooth keyboard installation will start within a short while.  
If the entered passkey is incorrect, please re-execute the previous step, by re-entering the passkey again.
8. When [Completing the Add Bluetooth Device Wizard] dialog box is displayed on the screen, indicating that the installation has completed.  
Close the wizard by clicking Finish.
9. Paired device information will automatically be stored within the keyboard. After pairing, turn on the keyboard power, press any key and it will enter into [Search mode]. The pairing LED lamp will flash, and then reconnect automatically.
10. To confirm the connection status settings, please go to ControlPanel > Bluetooth Devices > Devices tab.



### Windows 7 / 8 / 8.1 / 10

1. Open the Control Panel.
2. On category view, click [Hardware and Sound], then click [Add a device].  
On icon view, click [Devices and Printers], then click [Add a device].



3. Open the [Add Bluetooth Device Wizard].  
Add a device window displays [Select a device to add to this computer.]
4. Bluetooth devices found.  
Select [Majestouch Convertible 2], then click [Next].





### [Procedure 3] Setup from 2nd Unit Onwards (maximum setup 4 units)

#### 5. Add device passcode.

When the passcode dialog box appears, select [Create a pairing code for me] then click [Next]. (Windows 7)

#### 5. (Win7)



#### 6. Please input the passcode using the numeric keys on the keyboard, and then press Enter. Ensure to complete the pairing code input within 30 seconds.

[Reference] When inputting a pairing code, the status will not be displayed on the screen.

#### 6. (Win7)



#### 6. (Win10)



#### 7. When the passcode has been entered successfully, installation for the Bluetooth keyboard will start within a short while. If the entered passcode is incorrect, please re-execute the previous step by re-entering the passcode. In the case of failing to input the passcode by time-out and re-pairing under Windows 8/8.1/10, the passcode may not be displayed on the screen of "Enter the passcode for your keyboard". Click on the "or, try entering a passcode on it." to get a new passcode displayed.

#### 7. (Win10)



#### 8. The dialog box of Add a device will display [This device has been successfully added to this computer.] indicating that the installation is complete. Please close the dialog box. The dialog box would be automatically closed when under Windows 10.

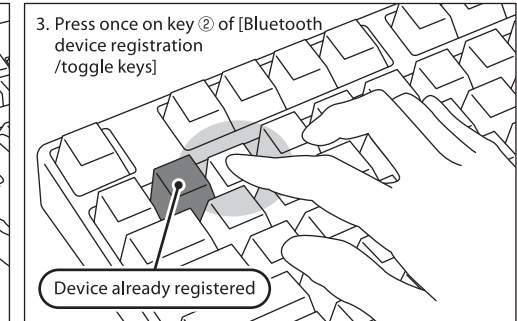
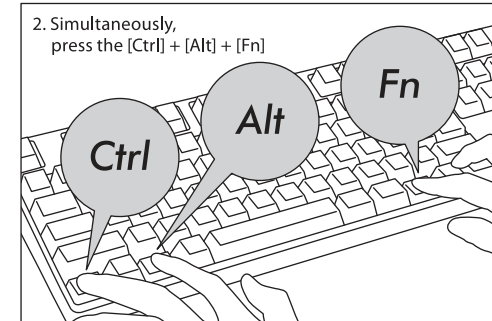
#### 8. (Win7)



#### 9. Paired device information will automatically be stored within the keyboard. After pairing, turn on the keyboard power, press any key and it will enter into [Search mode]. The pairing LED lamp will flash, and then reconnect automatically.

#### 10. To confirm the connection status settings, please go to Control Panel > Devices and Printers > Devices.

1. Confirm that the power of the keyboard is on.
2. Simultaneously, press [Ctrl] + [Alt] + [Fn] to execute the device toggle mode. The pairing LED lamp (blue) and the low power indicator lamp (red) will light up simultaneously for about 10 seconds.  
\* During Bluetooth connection, if the clear device button is pressed, the currently connected paired device information will be cleared, and will be replaced by the new paired mode. Please use the clear device button with caution to setup the pairing mode. (The clear device button is on the back side of the Tenkeyless keyboard.)
3. Following, press one of the [Bluetooth device registration/toggle keys] that has not been assigned any device information (as per diagram, keys ②~④), to input the registration device information.



4. The pairing LED lamp (blue) and the low power indicator lamp (red) will flash back and forth for about 4 seconds. Upon entering pairing mode (computer identifying status), only the pairing lamp (blue) will remain flashing.
5. Begin Bluetooth device installation (pairing in progress). (\* page 27 [Procedure 2])
6. The selected key will be registered.
7. Repeat steps 1~6 (for additional units).

### ◆ Changing or Removing Bluetooth Devices

#### Changing the connected device

1. Confirm that the keyboard is powered on.
2. Press [Ctrl] + [Alt] + [Fn] keys to enter the device toggle mode. The pairing LED lamp (blue) and the low power indicator lamp (red) will light up simultaneously for about 10 seconds.
3. To connect the already registered device, press any of the ①~④ [Bluetooth device registration/toggle keys].
4. The pairing LED lamp (blue) and the low power indicator lamp (red) will flash back and forth for about 4 seconds. If the connection is successful, both lamps will flash 3 times simultaneously.
5. Upon changing the connected device, and after the LED lamp has gone off, you may start to use the keyboard.  
\* Please check: when the pairing LED lamp (blue) flashes slowly for about 10 seconds and then goes off, it could be that the Bluetooth adapter is not actually connected, or the Bluetooth function of the device has been disabled.  
\* If a key that is not registered any device at step 3 is pressed, the keyboard will enter into pairing mode, then, please go back to step 2, and start over again.

#### Removing the registered device information

1. Confirm that the keyboard is powered on.
2. Press [Ctrl] + [Alt] + [Fn] keys to enter the device toggle mode. The pairing LED lamp (blue) and the low power indicator lamp (red) will light up simultaneously for about 10 seconds.
3. To remove the already registered device, press any key ①~④ from the [Bluetooth device registration/toggle keys].
4. The pairing LED lamp (blue) and the low power indicator lamp (red) will flash back and forth for about 4 seconds. If the connection is successful, both lamps will flash 3 times simultaneously.
5. After the LED lamp has gone off, press the clear device button.  
After the pairing LED lamp (blue) and the low power indicator lamp (red) flashes back and forth for about 4 seconds, then the pairing lamp (blue) will flash independently.
6. The paired device information will be deleted, and it will restart with the new pairing mode. If you wish to register other devices, please continue to execute device installation procedure. If you do not intend to continue registering, please turn off the keyboard power.
7. When using the PC, select [Control Panel] > [Hardware and Sound] > [Device and Printer].  
Select the icon of the keyboard that you wish to delete, then click delete. When the confirmation dialog box appears, press [OK].  
(XP/Vista sequence: [Control Panel] > [Bluetooth Device] > [Device Tab])

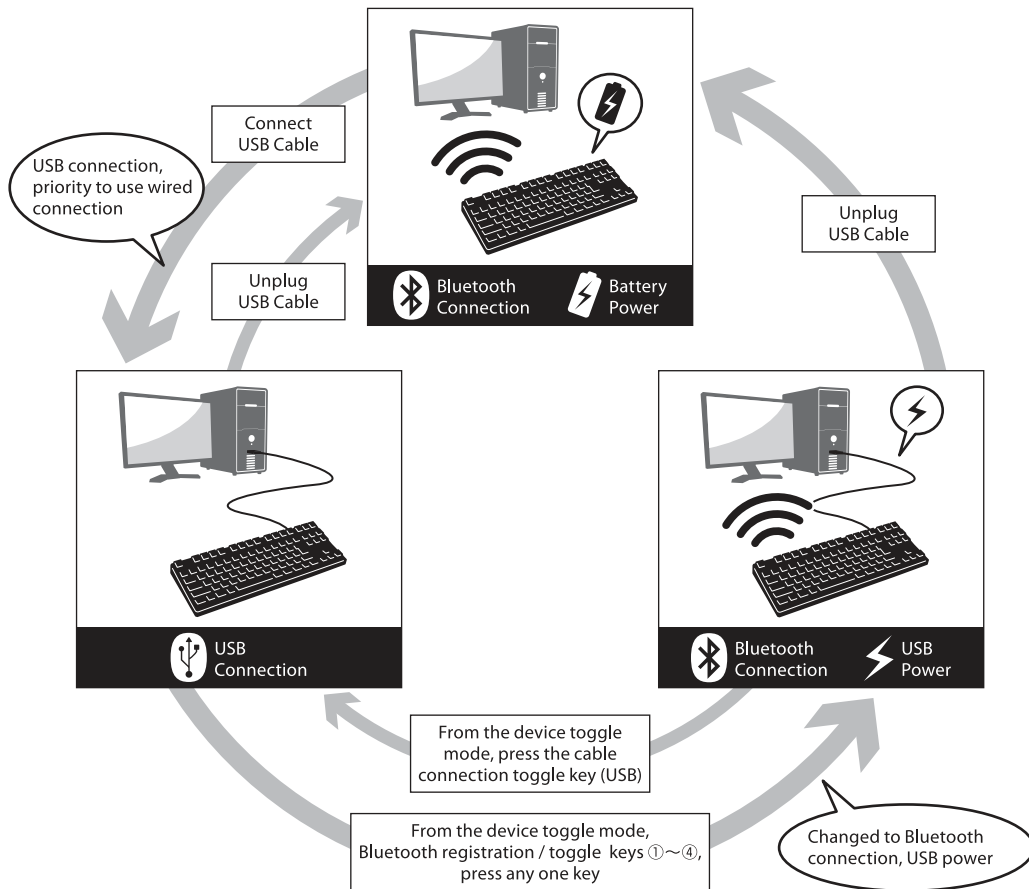
### Changing the registered information to another registration key

Please remove the registration information from both the keyboard and the device, and ensure to register the device information to a new key.

Please reference [Removing the already registered device information] and [Procedure 3 / Setup for 2nd Unit Onwards].

### Priority and Relationship between USB Connection and Bluetooth Connection

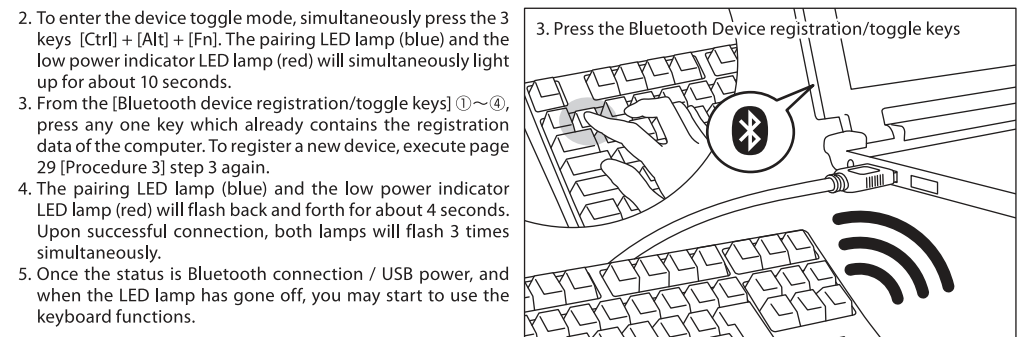
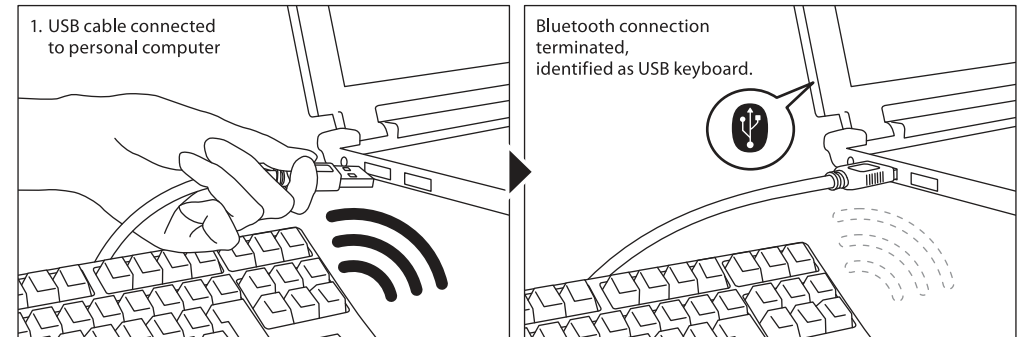
USB connection always has priority over the Bluetooth connection. During Bluetooth connection, if you connect or remove the USB cable, the following few connection switching scenarios might happen.



### Wireless Connection USB Power Startup Method

This product allows the USB cable to be connected to the USB port to supply power to the Bluetooth connection, so that it does not need to use batteries. But, when the Bluetooth connection is powered by through the USB by the computer, the keyboard must be connected with a USB cable.

1. Use the supplied USB cable to connect to the personal computer. The pairing LED lamp (blue) and the low power indicator LED lamp (red) will flash back and forth for about 4 seconds. When the Bluetooth connection is terminated, it will be identified as a USB keyboard by the personal computer.

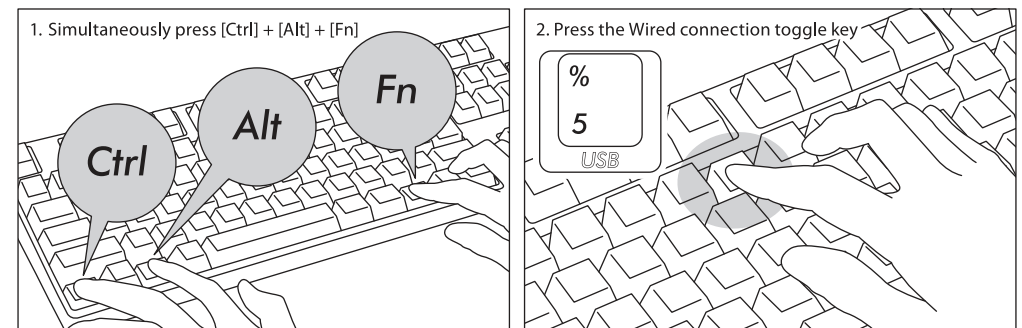


2. To enter the device toggle mode, simultaneously press the 3 keys [Ctrl] + [Alt] + [Fn]. The pairing LED lamp (blue) and the low power indicator LED lamp (red) will simultaneously light up for about 10 seconds.
3. From the [Bluetooth device registration/toggle keys] ①~④, press any one key which already contains the registration data of the computer. To register a new device, execute page 29 [Procedure 3] step 3 again.
4. The pairing LED lamp (blue) and the low power indicator LED lamp (red) will flash back and forth for about 4 seconds. Upon successful connection, both lamps will flash 3 times simultaneously.
5. Once the status is Bluetooth connection / USB power, and when the LED lamp has gone off, you may start to use the keyboard functions.

### Switching from Wireless connection to wired connection while charging from USB

Via any key press, you may restore USB connection from a previously setup Bluetooth connection/USB power status. To play quick-response games, or speed typing for a prolonged period of time, we strongly recommend that you use the USB connection.

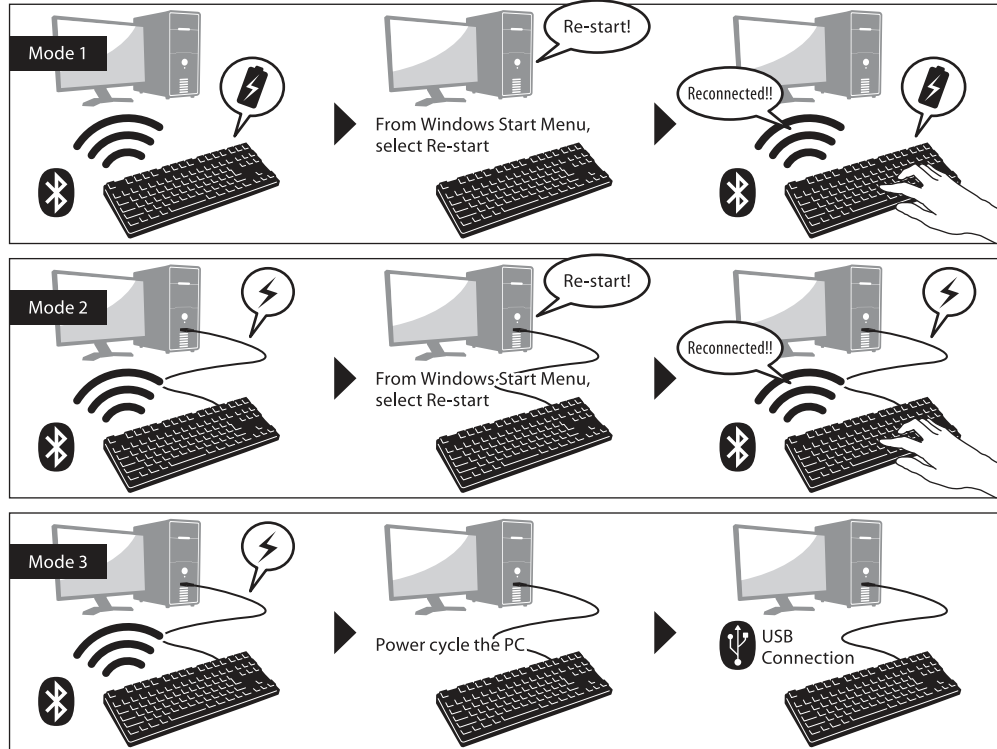
1. To enter the device toggle mode, simultaneously press the 3 keys [Ctrl] + [Alt] + [Fn].
2. Press the wired connection toggle key (key face has [USB] printed on it).



3. The pairing LED lamp (blue) and the low power indicator lamp (red) will flash back and forth for 4 seconds.
4. When the LED lamp has stopped flashing, you may start to use the keyboard that has been identified as a USB keyboard by the personal computer. LED lamps are indicators for the on/off of the CapsLock and ScrollLock.

### Other Attention Items

- When restarting a personal computer from start menu under battery powered Bluetooth connection, press any key on the keyboard to automatically reconnect after the computer has restarted. (Mode 1)
- When restarting a personal computer from start menu under Bluetooth connection with USB power supplied from the USB port, press any key on the keyboard to automatically reconnect after the computer has restarted. (Mode 2)  
For Mode 1 and Mode 2, when the Bluetooth connection is successful, the pairing LED lamp (blue) and the low power indicator lamp (red) will both flash 3 times simultaneously.
- For Bluetooth connection with USB power supplied from the USB port of a personal computer, switch off the power of the computer (Shutdown); later when the power is again turned on, it will be regarded as USB connection, because wired connection has priority during identification. (Mode 3)



- During Bluetooth connection, when the Bluetooth adapter (Bluetooth transmitter) is removed, and then again connected, press any key on the keyboard, to automatically reconnect. Having reconnected successfully, the pairing LED lamp (blue) and the low power indicator lamp (red) will flash 3 times simultaneously.
- Actions for multiple platform system environment options  
Under multiple platform system environment options, when one personal computer unit has multiple Windows OS operating systems, after USB connection, perform BIOS setup, when the select OS operating system startup screen appears, at times the [↓] key does not function normally. This happens on BIOS setup restart, the reason is that prior to reading the keyboard data, it enters into the Windows system; hence this is not a product defect.  
If unable to select any operating system, then please restart again.  
At the select OS operating system startup screen, when the OS operating system does not startup then it is still unable to create the Bluetooth connection configuration. Therefore, use the USB connection to select the OS operating system.  
Based on the multiple machine startup environment options, the Bluetooth connection may only be registered under one operating system.  
The registered account must not appear under other operating systems. In addition, you may not assign or setup the Bluetooth device registration codes ①~④ on other operating systems.  
For example: Under environment installed with Windows 7 and Windows 8 dual startup options  
Under Windows 7, register the Bluetooth device registration code ①.  
Under Windows 8, registering the Bluetooth device registration code ②  
is not accepted. First, clear the registration message from both the keyboard and the device; next, re-execute the newly selected operating system connection (pairing) setup operations.

## Usage Methods

### ◆ Modifying the Function of the Key through the DIP Switch Configuration

You may change or stop the use of the key codes by using the DIP switch located at the base of the keyboard. The factory default values for all are OFF.

When intending to use the DIP switch, please unplug the USB cable, and then turn off the Bluetooth power. Please note that when the cable and the personal computer are still in connection and the power is still turned on, this might result in damage or malfunction during operation. Please use a fine-tip rod to configure the DIP switch.

Factory default is OFF status



DIP No.	91JP Keyboard	89KR Keyboard	87EN Keyboard	88EU Keyboard
Switch 1	Windows key and Applications (App) key, are locked and cannot be used			
Switch 2	Changes CapsLock key and left Ctrl key			
Switch 3	Change Esc key and 半角/全角 keys	Changes Esc key and [ `~] keys		Changes Esc key and [ `~] keys
Switch 4 Changes two keys simultaneously	Fn key → top: Alt key side: App key top: App key → Fn key side: Alt key	top: right Win key → Fn key side: App key		Fn key → top: App key side: right Win key

### Replacing Keycaps

When the key functions are changed through the configuration of the DIP switch, included replacement keycaps will be used. When replacing the keycaps, please use the FILCO key puller.

	91JP Keyboard	89KR Keyboard	87EN Keyboard	88EU Keyboard
Switch 2	Ctrl	CapsLock 英数	Ctrl	CapsLock
Switch 4	Alt	Fn	Fn	

### ◆ Media Keys Device Operations

Pressing the Fn keys simultaneously, allows the keyboard to management the playing of videos and music, as well as adjusting the sound volume.

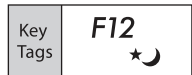
Key Tags	F1	F2	F3	F5	F6	F7	F8
Function	Increase sound volume	Decrease sound volume	Mute	Previous track	Play / Pause	Stop	Next track

### ◆ Windows Sleep and Standby Mode Toggle/Resume

During wired connection, pressing the Fn key and the Sleep key simultaneously, allows the keyboard to control the Windows Sleep standby mode toggle/resume. Through the key setup, may perform resume, as per following setup example.

- Open [Device Manager] Tags.
- Double-click on [Keyboard].
- Double-click on [HID Keyboard Device].
- Click on [Power Management] tab, and tick [Allow this device to wake the computer]. If the [Power Management] tab does not display the option for this machine model, then it is not applicable. (Moreover, when a Fast Startup function is effective, it may be unable to cancel.)

Moreover, for Bluetooth connection, Bluetooth specifications do not support resume from Windows Sleep Standby mode. Please use the mouse to wake up from Windows Sleep Standby mode.





## ◆Wireless Connection Power Saving Mode

Under battery powered Bluetooth connection status, if there is no activity for more than 30 minutes, it will automatically switch to power saving mode to save power consumption. Press any key on the keyboard to deactivate the power saving mode, the device will automatically resume connection. It might take 3-5 seconds for the operation.

In addition, may also power cycle the keyboard to deactivate the power saving mode.

On the other hand, under USB connection, it is unable to switch to power saving mode.

## ◆Connecting to iPad/iPhone

1. Use the keyboard [Pairing mode]. (\* page 26 [Procedure 1])
2. Tapping sequence : from Home screen, tap on [Settings] icon > [Bluetooth], and [On] the Bluetooth device.

3. Devices displays [Majestouch Convertible 2] as [Not Connected]. Tap on it and use the keyboard to input the PIN code displayed on the screen, then press the [Enter]key.

4. After pairing, the devices will display [Majestouch Convertible 2] as [Connected].

\* Compatible with iOS 9.2.1 and above. However earlier versions which are not supported may have limited functionality.

\* Onscreen keyboard does not appear during Bluetooth connection.

\* May use the hotkeys provided in the table on the right.

Hotkeys	
Shift + cursor left/right key	Select Range
⌘ (Win) + A	Select All
⌘ (Win) + X	Cut
⌘ (Win) + C	Copy
⌘ (Win) + V	Paste
⌘ (Win) + Z	Undo

## ◆Troubleshooting

- Q. No power supply.  
Check the direction of the batteries.  
Could be that the batteries are out of power. Please replace with new batteries.
- Q. Unable to execute pairing. When searching for Bluetooth device, keyboard did not appear on the screen.
  - Please confirm that the power of the keyboard has been turned on.
  - Please check the direction of the batteries. If the batteries are out of power, please replace with new batteries.
  - When executing device toggle mode, please press the 3 keys [Ctrl] + [Alt] + [Fn] simultaneously. Registered device data, press one of the [Bluetooth device register/toggle keys ①~④] once, please confirm whether the Pairing LED lamp (blue) is flashing.
  - Press the clear device button and confirm that the Pairing LED lamp (blue) is flashing.
  - When using a Bluetooth adaptor, please check whether operating normally, and whether installed correctly.
  - If you wish to use the embedded Bluetooth function of the personal computer, please check whether it has been turned on.
- Q. In comparison, the touch of the larger keys such as Enter key and Shift key is different from the other small keys  
The specification for the larger keys is specially designed.  
The larger keys are designed with [Stabilizers], therefore pressing on any part of the key will move it up and down freely.
- Q. After personal computer startup, Bluetooth connection is unable to select BIOS setup or execute operating system.  
Adapters from Bluetooth version 2.1 upwards, after pairing setup, the passkey parameter will be registered internally into the adaptor, therefore prior to operating system startup, there will be a function that can configure the BIOS screen or select from the operating system screen.  
Bluetooth adapter is not equipped with this function, and therefore prior to Windows startup, it will not be usable. When necessary, please use other USB connected or PS/2 connected keyboard for operation.  
This is a problem with the function of the adapter, any question, please contact the manufacturer of the adapter.
- Q. Unable to connect Bluetooth under Safe mode.  
Bluetooth connection cannot be used under Safe mode.
- Q. Unable to use keyboard when connecting or removing the Bluetooth adapter.  
When connecting or removing the Bluetooth adapter, press any key to automatically reconnect.
- Q. Unable to resume Windows from Sleep Standby Mode.  
When using Bluetooth connection, the design of the Bluetooth function does not support resume Windows from Sleep Standby mode. Please use the mouse or other devices in advance to deactivate Windows Sleep Standby Mode.
- Q. Can it be used with other Windows system?  
Bluetooth adapters can be operated with Windows 8/8.1/10, Windows 7, Windows Vista, Windows XP SP2 or upgraded versions having standard application functions. But, it cannot be used with other Windows systems. There is no support software and drivers.
- Q. Keyboard operational error during Bluetooth connection.,  
Due to different environmental usage, the range of wireless signal may be affected. If the personal computer or keyboard is near a microwave, wireless networking products, or in an environment generating wireless electronic waves interference: such as wireless telephone, these might result in it operating abnormally.
- Q. Incorrect character appears during input.  
If the initial keyboard software is still installed, please remove it first. Old settings not removed might result in operating issues.
- Q. Keyboard frequently does not operate properly, the last entered character keeps repeating.  
If many same frequency wireless devices exist in the vicinity, the interference might result in signal terminated.  
The software and drivers of this model of Bluetooth adapter has a high efficiency and is easy to use, but if there are constant communication issues, it might be due to factors causing interference in the vicinity.  
Under such circumstance, first, please remove the dedicated software program, then via executing the OS standard operating system software program can reduce the frequency of the occurrence of problems; there has been many physical proofs that malfunction situations are significantly reduced.

## 使用说明书

◆使用注意事项.....35	【步骤①】由键盘转成配对模式.....39
◆系统要求.....35	【步骤②】安装蓝牙装置(配对模式).....40
◆产品介绍.....36	【步骤③】第2台以后的设定(最多可设定4台).....40
◆零件名称及附件.....36	◆变更与删除蓝牙装置.....40
◆期關・LED指示灯的功能.....37	<b>使用方法</b>
<b>如何连接</b>	◆藉由DIP开关操作变更按键功能.....44
◆选择连接方式.....38	◆媒体键的装置操作.....44
◆通过有线连接到个人计算机.....38	◆Windows睡眠待机模式的切换/回复.....44
◆通过无线连接到个人计算机.....38	◆无线连接的省电模式.....44
	◆连接iPad/iPhone使用操作系统.....45
	◆疑难排解.....45

非常感谢您本次购买FILCO Majestouch Convertible 2蓝牙无线键盘。请仔细阅读本手册刊载的注意事项。

## ◆使用注意事项

- 安装时, 请以具有管理权限的使用者账户登录。
- 本产品适用于办公室和家庭的一般性使用。当涉及对生命有直接或间接影响的医疗设备与金融系统、计算机系统、核能设施, 以及安全性和可靠性要求极高, 或直接影响军事防御目的等环境, 请勿使用本产品。上列因素所造成之损害行为, 本公司不承担任何责任。
- 因外部因素造成本产品故障、连接失败、通讯不良、停电, 或因第三方介入而错失通讯机会等, 所造成之损害行为, 本公司不承担任何责任。
- 因第三者通过拦截通讯内容、泄露信息、篡改、破坏等所造成的损害行为, 本公司不承担任何责任。

### 关于通讯的注意事项

- 请在无障碍的良好收讯场所使用。收讯距离所影响之通讯质量, 取决于建筑物结构和障碍物。处在钢筋、金属、和混凝土之间, 讯号可能无法连接。
- 用户若置身妨碍通讯的死角, 或未提供无线讯号的地方, 会导致通讯中断或无法连接。
- 联机时, 请远离AV和OA等机器2公尺以外。微波炉极易影响讯号, 联机时请确保相距3米以外, 否则可能无法联机成功。
- 由于IEEE802.11g/b的无线LAN机器, 和本产品的蓝牙功能使用同样频率(2.4GHz), 两者靠近使用时, 会产生电波干扰, 以致影响连接速度或无法连线。在此情况下, 请将未使用的装置电源关闭。
- 本产品或其它蓝牙机器会释放电磁波, 请勿使用于电视或收音机附近, 有可能干扰声音或影像的传送。

### 安全事项

- 关于电池的使用
  - 请放置于幼童触摸不到的地方。
  - 请勿将电池加热, 勿拆卸电池或倒入水中。
  - 请勿新旧电池混合使用, 勿混合使用不同种类电池(如碱性电池与锰电池混用)。
  - 勿使用过期或电力不足的电池, 并请依照所在地法规或行政规定, 适当处理或丢弃使用过的电池。
- 关于键盘处理
  - 请摆放在平整场所, 以免发生掉落等意外事故。键盘属于精密机械, 内有电池与变压器, 故请小心放稳, 避免饮料或液体流入机身内部。
  - 请勿拆卸或改装。原厂维修标签请勿任意撕毁或改造, 以免影响保固。
  - 以下情形请暂时或完全停止使用本产品, 电波影响有可能造成机器无法正常运作而发生事故。
    - 心脏起搏器附近
    - 医疗机构及医疗电子设备附近
    - 飞机机舱内
    - 使用本产品会产生对其它机器的电波干扰
- 本产品保固内容与规定, 只限于您所购买的地区。如果您在日本国内购买, 将适用日本Diatec Corporation公司的规定; 如果您通过海外代理商购买, 则适用该代理商规定的保修条款。此外, 本手册之保证书, 只适用于日本境内。

### 关于健康问题的注意事项

如果长时间使用鼠标、键盘、轨迹球鼠标, 会增加手部、手腕、头部、肩膀的负担, 可能会感到疼痛和麻木。如果持续不断重复使用, 可能会导致严重伤害。当产生上述不适情形时, 请马上停止使用鼠标和键盘, 并建议咨询专业医师。使用个人计算机, 请定期休息, 并请留意勿造成手部、手腕、头部、肩膀等不适。

## ◆系统要求

PC(个人计算机): 使用有线连接时, 请用有USB端口的Windows个人计算机, 使用无线连接时, 请用有蓝牙HID Profile的Windows个人计算机  
OS(操作系统): Windows XP Service Pack 2或更新的版本、Windows Vista、Windows 7、Windows 8、Windows 8.1、Windows 10 如果使用蓝牙连接, 个人计算机需具备蓝牙功能, 或有蓝牙接收器。由于切换问题, 可能会发生无法连接的情形, 并非所有蓝牙接收器都有支持。  
※安装蓝牙连接时, 请务必使用鼠标操作。

## ◆ 产品介绍

### 2way键盘 USB有线连接和蓝牙无线连接

#### ■ USB连接

可以通过本产品所附的USB连接线进行操作。(本产品不具备充电的功能)

#### ■ 蓝牙连接

本产品采用蓝牙标准规格 ver3.0 class2技术来加强个人计算机连接时的省电功能,并可享受无线连接的操作环境。本产品支持的使用范围约10公尺以内,只须于首度使用时,进行计算机连接设定,之后使用无需另行安装设定。最多可连接四台个人计算机,并可自由切换。除电池供电外,也可使用USB电线供电。使用电池供电时,若静止约30分钟以上,将自动进入省电模式,以节省电力耗损。

### FR-4的2层电路板

本产品引进全新双面印刷电路板FR-4(玻璃纤维基板),使基本性能更充实。所有端子都用贯孔方式,以焊锡牢牢固定,能够有效避免打字时,对基板及铜箔走线产生振动与压载力的影响,积极增进耐久性、可靠性,和提高键控操作等性能。

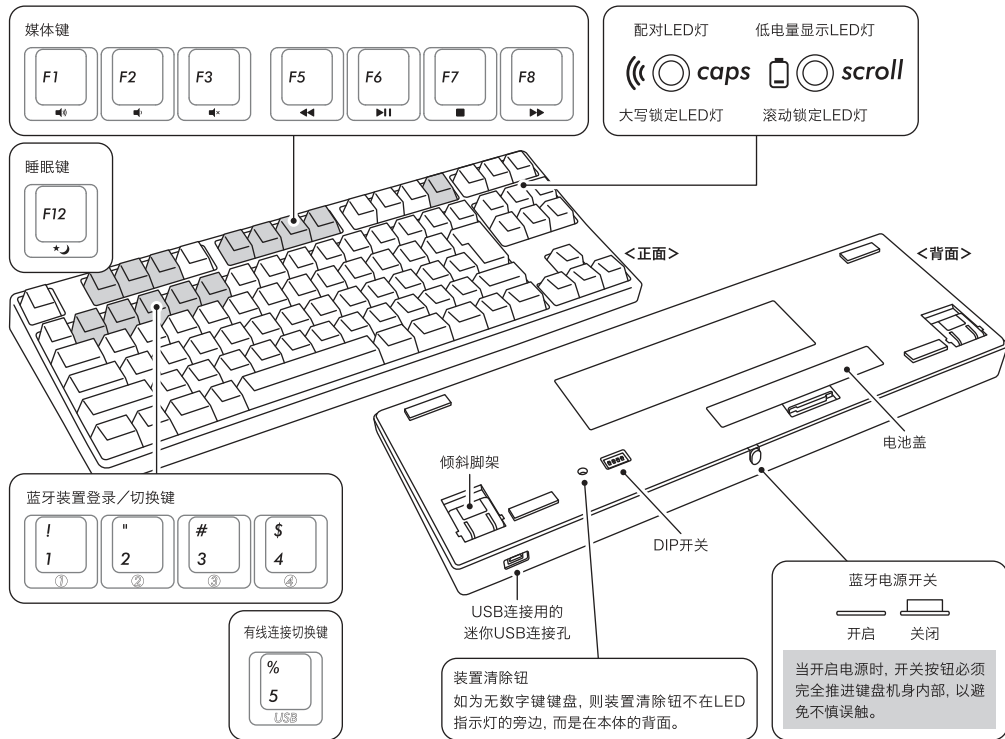
### 使用Cherry MX按键开关

Cherry MX按键开关是德国ZF Electronics公司(原Cherry公司)所产的机械开关,深度有别于一般键盘,键触击深度约4mm,触发点约为2mm的位置,操作时具有较大弹性距离。因本产品具有独立按键开关,故能使按键动作更为轻快。

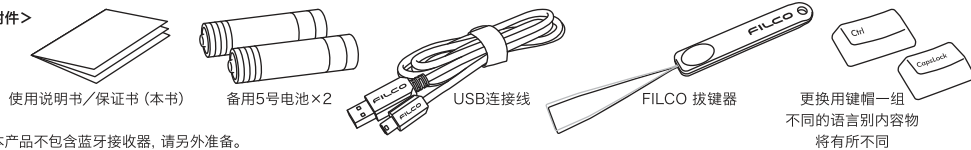
### 藉由DIP开关改变按键功能的操作方式

通过DIP开关的设定,可以切换「大写锁定键」和「左Ctrl」,以及锁定「Windows」键和一个「App」键。

## ◆ 零件名称及附件



### <附件>



※本产品不包含蓝牙接收器,请另外准备。

## ◆ 开关·LED指示灯的功能

蓝牙电源开关	位于键盘背面。 使用蓝牙连接时,必须开启本开关。 以下情形应关闭蓝牙开关:长时间不使用蓝牙连接,个人计算机已关机,或改成使用USB连接。	
DIP开关	位于键盘底部。 用以变更使用及暂停按键。所有开关出厂预设均为关闭状态。欲了解更多相关内容,请参阅第44页。	
装置清除按钮	删除登录·按下重新再登录。 装置清除按钮在无数字键键盘本体的背面。当蓝牙连接时按下本键,将清除登录信息,并转换成配对模式。欲了解更多相关内容,请参阅第41页。	
大写锁定LED灯 兼 配对LED灯	<ul style="list-style-type: none"> <li>USB连接时 启用大写锁定键时,显示蓝灯。</li> <li>蓝牙连接时 装置切换模式、配对模式、连接成功时,指示灯会闪烁或亮起。欲了解更多有关亮灯模式的详细说明,请参阅第39页。</li> </ul>	
滚动锁定LED灯 兼 低电量显示LED灯	<ul style="list-style-type: none"> <li>USB连接时 启用滚动锁定时,显示红灯。</li> <li>蓝牙连接时 ①当电池耗尽,红色灯会闪烁 当LED灯闪烁时,需尽快更换电池。若继续使用,将耗尽电池电力,就无法维持蓝牙连接所需的电压,操作动作会不稳定。当电池完全耗尽时,LED指示灯将不亮,也不闪烁,键盘也无动作。 ※电池寿命:1天5小时约可使用6个月(碱性电池),但电池寿命会因使用状况与环境因素而有所不同。</li> <li>②进入装置切换模式、配对模式、连接成功时,灯号显示亮灯或闪烁。了解更多有关亮灯模式的详细说明,请参阅第39页。</li> </ul>	
媒体键	多媒体功能 同时按下Fn键时,可以用键盘操控播放影片或音乐,并能调节音量大小等。	
睡眠键	使用USB连接时,和Fn键同时按下,可以从键盘操控进入或退出Windows的睡眠待机模式。欲了解更多相关内容,请参阅第44页。 ※本蓝牙规格不支持蓝牙连接时的唤醒动作。	
蓝牙装置 登录/切换键	<ul style="list-style-type: none"> <li>从装置切换模式(※参阅第38页[蓝牙连接流程图])进入配对模式,按下①~④任意装置进行登录</li> <li>按下切换模式装置来改变连接的装置。每个键连接一个,总共可登录四个装置。</li> </ul>	
有线连接切换键	当蓝牙连接通过USB供电时,按下这个键将由蓝牙模式连接改为USB有线模式。	

【有关大写锁定、滚动锁定的LED指示灯显示】

使用蓝牙连接时,不论通过电池或USB供电,键盘本身的大写锁定LED灯和滚动锁定LED灯,皆不会显示。