

# COMMSCOPE<sup>®</sup>

**DRAFT**

# ION<sup>®</sup>-U

## EU H 19P2 Extension Unit



**User's Manual  
MF0200A0A**

POWERED BY



**DISCLAIMER:**

This document has been developed by CommScope, and is intended for the use of its customers and customer support personnel. The information in this document is subject to change without notice. While every effort has been made to eliminate errors, CommScope disclaims liability for any difficulties arising from the interpretation of the information contained herein. The information contained herein does not claim to cover all details or variations in equipment, nor to provide for every possible incident to be met in connection with installation, operation, or maintenance. This document describes the performance of the product under the defined operational conditions and does not cover the performance under adverse or disturbed conditions. Should further information be desired, or should particular problems arise which are not covered sufficiently for the purchaser's purposes, contact CommScope.

CommScope reserves the right to change all hardware and software characteristics without notice.

**COPYRIGHT:**

© Copyright 2013 CommScope Inc. All Rights Reserved.

This document is protected by copyright. No part of this document may be reproduced, stored in a retrieval system, or transmitted, in any form or by any means, electronic, mechanical photocopying, recording, or otherwise without the prior written permission of CommScope.

**TRADEMARKS**

All trademarks identified by ® or ™ are registered trademarks or trademarks, respectively, of CommScope. Names of products mentioned herein are used for identification purposes only and may be trademarks and / or registered trademarks of their respective companies.

Andrew Wireless Systems GmbH, 08-July-2013

**TABLE OF CONTENTS**

<b>1. GENERAL</b>	<b>6</b>
1.1. USED ABBREVIATIONS	6
1.2. HEALTH AND SAFETY WARNINGS	7
1.3. ABOUT COMMSCOPE	10
1.4. INTERNATIONAL CONTACT ADDRESSES FOR CUSTOMER SUPPORT	11
<b>2. INTRODUCTION</b>	<b>14</b>
2.1. PURPOSE	14
2.2. ION-U HIGH POWER REMOTE AND EXTENSION UNITS	14
<b>3. FUNCTIONAL DESCRIPTION</b>	<b>15</b>
3.1.1. Fan Protection Kit	15
3.1.2. Accessories	15
<b>4. COMMISSIONING</b>	<b>16</b>
<b>4.1. HIGH POWER RU MECHANICAL INSTALLATION</b>	<b>16</b>
4.1.1. General	16
4.1.2. Wall-Mounting Procedure	18
4.1.3. Pole Mounting Procedure	19
4.1.4. Mounting of Fan Protection	20
<b>4.2. ELECTRICAL INSTALLATION</b>	<b>22</b>
4.2.1. General	22
4.2.2. Connections	23
4.2.3. Grounding (Earthing)	25
4.2.4. Connection of the Antenna Cable	25
4.2.5. Mains Power Connection	27
4.2.6. Extension Unit Port Connection	28
<b>4.3. COMMISSIONING</b>	<b>30</b>
<b>5. ALARMS</b>	<b>33</b>
5.1. BITE AND ALARMS	33
5.2. HANDLING OF ALARMS	33
5.3. ALARM STATUS	33
5.4. STATUS LED ALARMS	33
5.5. TROUBLESHOOTING	35

<b>6. MAINTENANCE</b>	<b>36</b>
6.1. GENERAL	36
6.2. REPLACING THE FAN UNIT	37
6.3. CLEANING THE HEAT SINK	39
<b>7. APPENDIX</b>	<b>40</b>
7.1. ILLUSTRATIONS	40
7.2. SPECIFICATIONS	43
7.3. SPARE PARTS	43
<b>8. INDEX</b>	<b>44</b>

## FIGURES AND TABLES

figure 3-3 Shroud with RU and EU .....	15
figure 4-1 Wall Mounting.....	18
figure 4-2 Pole mounting kit.....	19
figure 4-3 Pole mounting drawing.....	20
figure 4-4 Mounting procedure for fan protection .....	21
figure 4-5 ION-U H 17P2 Connectors.....	23
figure 4-6 Grounding bolt.....	25
figure 4-7 Grounding bolt, schematic view .....	25
figure 4-8 Antenna port to CBC wiring.....	26
figure 4-9 Mains power connector .....	27
figure 4-10 Mains power cable - AC .....	28
figure 4-11 EU (Extension Unit) connector.....	28
figure 4-12 Extension unit cable bridge .....	29
figure 5-1 Alarm triggering .....	34
figure 7-1 Installation drawing-front and rear views .....	40
figure 7-2 Installation drawing-side views.....	41
figure 7-3 Installation drawing-short version .....	42
table 1-1 List of international contact addresses.....	13
table 4-1 Specified torques.....	17
table 4-2: ION-U High Power EU Connectors .....	24
table 4-3 AC power cable .....	28
table 4-4 EU Connector .....	28
table 5-1 Status LED alarms.....	34

# 1. General

## 1.1. Used Abbreviations

AC/DC	Alternating current / Direct Current
AIMOS	Andrew Integrated Management and Operating System
ALC	Automatic Level Control
BITE	Built-In Test Equipment
BTS	Base Transceiver Station
CDMA	Code Division Multiple Access
CE	"Conformité Européenne" ("European Conformity")
CPD	Channel Power Detection
DL	Downlink
DoC	Declaration of Conformity
dSMR	Measurement Receiver
EP	Extension Port
ESD	Electrostatic Discharge
EU	Extension Unit
GSM	Global System for Mobile Communication
GND	Ground (Earth)
GUI	Graphical User Interface
ICP3	Intercept Point 3 <sup>rd</sup> order
ID No	Identification Number
IFC	Interface Card
ION	Intelligent Optical Network
LED	Light Emitting Diode
LMT	Local Maintenance Terminal
LTE	Long Term Evolution
MIMO	Multiple Input Multiple Output
MS	Mobile Station
MU	Main Unit
NF	Noise Figure
OMC	Operations and Maintenance Center
OTRx	Optical Transceiver = SRMU (Subrack Master Unit)
PDU	Power Distribution Unit
PIM	Passive Intermodulation
$P_{in}$	Input power
$P_{out}$	Output power
PSU	Power Supply Unit
Rev	Revision
RF	Radio Frequency
RU	Remote Unit
RX	Receiver
SISO	Single Input Single Output
SM	Site Manager
SMTX	Sector Matrix Module
SNMP	Simple Network Management Protocol
SRC	Subrack Controller
TX	Transmitter
UL	Uplink
UMTS	Universal Mobile Telecommunication System
UPS	Uninterruptible Power Supply
VSWR	Voltage Standing Wave Ratio
WCDMA	Wideband Code Division Multiple Access
WDM	Wavelength Division Multiplex
XML	Extensible Markup Language
ZCMB	Zone Combiner Module

## 1.2. Health and Safety Warnings



1. **Danger:** Obey all general and regional installation and safety regulations relating to work on high voltage installations, as well as regulations covering correct use of tools and personal protective equipment.



2. **Danger:** Laser radiation! Do not stare into the beam; do not view it directly or with optical instruments.

3. **Danger:** Before opening the unit, disconnect mains power.

4. **Danger:** Due to power dissipation, the remote unit may reach a very high temperature. Do not operate this equipment on or close to flammable materials. Use caution when servicing the unit.

5. **Warning:** Read and obey all the warning labels attached to the unit. Make sure that all warning labels are kept in a legible condition. Replace any missing or damaged labels.

6. **Warning:** It is the responsibility of the network provider to implement prevention measures to avoid health hazards associated with radiation from the antenna(s) connected to the unit.

7. **Warning:** Make sure, access is restricted to qualified personnel.

8. **Warning:** Only license holders for the respective frequency range are allowed to operate this unit.

9. **Warning:** Make sure the repeater settings are correct for the intended use (refer to the manufacturer product information) and regulatory requirements are met.

10. **Warning:** Use this equipment only for the purpose specified by the manufacturer. Do not carry out any modifications or fit any spare parts, which are not sold or recommended by the manufacturer. This could cause fires, electric shock, or other injuries.

11. **Warning:** For installations, which have to comply with FCC RF exposure requirements, the antenna selection and installation must be completed in a way to ensure compliance with those FCC requirements. Depending on the RF frequency, rated output power, antenna gain, and the loss between the repeater and antenna, the minimum distance D to be maintained between the antenna location and human beings is calculated according to this formula:

$$D_{[cm]} = \sqrt{\frac{P_{[mW]}}{4 * \pi * PD_{[mW/cm^2]}}}$$

where

- P (mW) is the radiated power at the antenna, i.e. the max. rated repeater output power in addition to the antenna gain minus the loss between the repeater and the antenna.

- PD (mW/cm<sup>2</sup>) is the allowed Power Density limit acc. to 47 CFR 1.1310 (B) for general population / uncontrolled exposures which is
  - F (MHz) / 1500 for frequencies from 300MHz to 1500MHz
  - 1 for frequencies from 1500MHz to 100.000MHz

RF exposure compliance may need to be addressed at the time of licensing, as required by the responsible FCC Bureau(s), including antenna co-location requirements of 1.1307(b)(3).


12. **Warning:** For installations which have to comply with Europe an EN50385 exposure compliance requirements, the following Power Density limits/guidelines (mW/cm<sup>2</sup>) according to ICNIRP are valid:

- 0.2 for frequencies from 10 MHz to 400 MHz
- F (MHz) / 2000 for frequencies from 400 MHz to 2 GHz
- 1 for frequencies from 2 GHz to 300 GHz

13. **Caution:** Keep operating instructions within easy reach and make them available to all users.

14. **Caution:** Corresponding local particularities and regulations must be observed. For national deviations, please refer to the respective documents included in the manual CD that is delivered with the unit.

15. **Caution:** Although the remote unit is internally protected against overvoltage, it is strongly recommended to ground (earth) the antenna cables close to the repeater's antenna connectors for protection against atmospheric discharge.

 16. **Caution:** ESD precautions must be observed! Before commencing maintenance work, use the available grounding (earthing) system to connect ESD protection measures.

17. **Caution:** Installation of this equipment is in full responsibility of the installer, who has also the responsibility, that cables and couplers are calculated into the maximum gain of the antennas, so that this value, which is filed in the FCC Grant and can be requested from the FCC data base, is not exceeded. The industrial boosters are shipped only as a naked booster without any installation devices or antennas as it needs for professional installation.

18. **Note:** For a Class A digital device or peripheral:


This equipment has been tested and found to comply with the limits for a Class A digital device, pursuant to part 15 of the FCC Rules. These limits are designed to provide reasonable protection against harmful interference when the equipment is operated in a commercial environment. This equipment generates, uses, and can radiate radio frequency energy and, if not installed and used in accordance with the instruction manual, may cause harmful interference to radio communications. Operation of this equipment in a residential area is likely to cause harmful interference in which case the user will be required to correct the interference at his own expense.



19. **Note:** This unit complies with European standard EN60950.

### Equipment Symbols Used

Please observe the meanings of the following symbols used in our equipment:

Symbol	Compliance	Meaning
---	<b>FCC</b>	WARNING. This is NOT a CONSUMER device. It is designed for installation by FCC LICENSEES and QUALIFIED INSTALLERS. You MUST have an FCC LICENSE or express consent of an FCC Licensee to operate this device. Unauthorized use may result in significant forfeiture penalties, including penalties in excess of \$100,000 for each continuing violation.
	---	Alert sign to R&TTE To be sold exclusively to mobile operators or authorized installers – no harmonised frequency bands, operation requires license Intended use: EU and EFTA countries
<b>CE 0700</b>	Symbol	Indicates conformity with the R&TTE directive 1999/5/EC certified by the notified body no. 0700.

### 1.3. About CommScope

*CommScope* is the foremost supplier of one-stop, end-to-end radio frequency (RF) solutions. Part of the *CommScope* portfolio are complete solutions for wireless infrastructure from top-of-the-tower base station antennas to cable systems and cabinets, RF site solutions, signal distribution, and network optimization.

*CommScope* has global engineering and manufacturing facilities. In addition, it maintains field engineering offices throughout the world.

*Andrew Wireless Systems GmbH* based in Buchdorf/ Germany, which is part of *CommScope*, is a leading manufacturer of coverage equipment for mobile radio networks, specializing in high performance, RF and optical repeaters. Our optical distributed networks and RF repeater systems provide coverage and capacity solution for wireless networks in both indoor installations and outdoor environments, e.g. tunnels, subways, in-trains, airport buildings, stadiums, skyscrapers, shopping malls, hotels and conference rooms.

*Andrew Wireless Systems GmbH* operates a quality management system in compliance with the requirements of ISO 9001 and TL 9000. All equipment is manufactured using highly reliable material. To maintain highest quality of the products, comprehensive quality monitoring is conducted at all fabrication stages. Finished products leave the factory only after a thorough final acceptance test, accompanied by a test certificate guaranteeing optimal operation.

This product meets the requirements of the R&TTE directive and the Declaration of Conformity (DoC) itself. A current version of the CE DoC is included in this manual CD delivered \*. Any updated version of the DoC is available upon request from the local sales offices or directly from *CommScope* via the local Customer Support at one of the addresses listed in the following chapter.

**According to the DoC, our "CE"-marked equipment can be used in all member states of the European Union.**

**Note:** **Exceptions of and national deviations from this intended use may be possible. To observe corresponding local particularities and regulations, please refer to the respective documents (also in national language) which are included in the manual CD delivered.**

\* In case the Declaration of Conformity (DoC) for the product was not included in the manual CD delivered, it is available upon request from the local sales offices or directly from *CommScope* at one of the addresses listed in the following chapter.

To make the most of this product, we recommend you carefully read the instructions in this manual and commission the system only according to these instructions.

For technical assistance and support, please also contact the local office or *CommScope* directly at one of the addresses listed in the following chapter.

## 1.4. International Contact Addresses for Customer Support

### Americas:

<b>Canada</b>	
<b>CommScope Canada</b>	
Mail	505 Consumers Road, Suite 803 Toronto M2J 4V8 Canada
Phone	+1-905-878-3457 (Office) +1-416-721-5058 (Cell)
Fax	+1-905-878-3297
E-mail	Peter.Masih@commscope.com, wisupport@commscope.com

<b>United States</b>	
<b>Andrew LLC, A CommScope Company</b>	
Mail	620 North Greenfield Parkway Garner, NC 27529 U.S.A.
Phone	+1-888-297-6433
Fax	+1-919-329-8950
E-mail	wisupport@commscope.com

<b>Caribbean &amp; South American Region (CALA)</b>	
<b>CommScope Cabos do Brasil Ltda.</b>	
CALA Tech Support for <i>Distributed Coverage &amp; Capacity Solutions (DCCS) products:</i>	
Mail	Rua Guaporanga, 49 Praça Seca – Rio de Janeiro – RJ ZIP: 21320-180 Brazil
Phone	+1-815-546-7154 (Cell) +55-15-9104-7722 (Office)
Fax	+ 55-15-2102-4001
E-mail	wisupport@commscope.com

<b>Caribbean (CALA) &amp; Central American Region</b>	
<b>CommScope Mexico S.A. de C.V.</b>	
CALA Tech Support for <i>Distributed Coverage &amp; Capacity Solutions (DCCS) products:</i>	
Mail	Av. Insurgentes Sur 688, Piso 6 Col. Del Valle, CP: 03100 Mexico City Mexico
Phone	+52-1-55-5419-5260 (Cell) +52-55-1346-1900 (Office)
Fax	+52-55-1346-1901
E-mail	wisupport@commscope.com

### APAC Countries:

<b>China, India and Rest of Asia</b>	
<b>Andrew International Corporation</b>	
Mail	Room 915, 9/F Chevalier Commercial Centre 8 Wang Hoi Rd Kowloon Bay Hong Kong
Phone	+852-3106-6100
Fax	+852-2751-7800
E-mail	wisupport.China@commscope.com

<b>Australia &amp; New Zealand</b>	
<b>Andrew Corporation (Australia) Pty Ltd.</b>	
Mail	Unit 1 153 Barry Road Campbellfield VIC 3061 Australia
Phone	+613-9300-7969
Fax	+613-9357-9110
E-mail	wisupport.Australia@commscope.com

**Europe:**

<i>United Kingdom</i>	
<b>Andrew Wireless Systems UK Ltd</b>	
Mail	Unit 15, Ilex Building Mulberry Business Park Fishponds Road Wokingham Berkshire RG41 2GY England
Phone	+44-1189-366-792
Fax	+44-1189-366-773
E-mail	wisupport.uk@commscope.com

<i>Scandinavia</i>	
<b>Andrew Norway (AMNW)</b>	
Mail	P.O. Box 3066 Osloveien 10 Hoenefoss 3501 Norway
Phone	+ 47 32-12-3530
Fax	+ 47 32-12-3531
E-mail	wisupport@commscope.com

<i>Germany</i>	
<b>Andrew Wireless Systems GmbH</b>	
Mail	Industriering 10 86675 Buchdorf Germany
Phone	+49-9099-69-0
Fax	+49-9099-69-930
E-mail	wisupport@commscope.com

<i>France</i>	
<b>CommScope France</b>	
Mail	Immeuble Le Lavoisier 4, Place des Vosges 92052 Courbevoie France
Phone	+33-1 82 97 04 00
Fax	+33-1 47 89 45 25
E-mail	wisupport@commscope.com

<i>Austria</i>	
<b>Andrew Wireless Systems (Austria) GmbH</b>	
Mail	Weglgasse 10 2320 Wien-Schwechat Austria
Phone	+43-1706-39-99-10
Fax	+43-1706-39-99-9
E-mail	wisupport.austria@commscope.com

<i>Switzerland</i>	
<b>CommScope Wireless Systems AG</b>	
Mail	Tiergartenweg 1 CH-4710 Balsthal Switzerland
Phone	+41-62-386-1260
Fax	+41-62-386-1261
E-mail	wisupport.ch@commscope.com

<i>Italy</i>	
<b>CommScope Italy S.r.l., Faenza, Italy</b>	
Mail	Via Mengolina, 20 48018 Faenza (RA) Italy
Phone	+39-0546-697111
Fax	+39-0546-682768
E-mail	wisupport.italia@commscope.com

<i>Iberia Region - Spain &amp; Portugal</i>	
<b>Andrew España S.A. A CommScope Company</b>	
Mail	Avda. de Europa, 4 - 2ª pta. Parque Empresarial de la Moraleja Alcobendas, Madrid 28108 Spain
Phone	+34-91-745-20 40
Fax	+34-91-661-87 02
E-mail	wisupport.iberia@commscope.com

<b>Czech Republic</b>	
<b>CommScope Solutions Czech Republic C-Com, spol. s r.o</b>	
Mail	U Moruší 888 53006 Pardubice Czech Republic
Phone	+49 871 9659171 (Office) +49 171 4001166 (Mobile)
Fax	+49 871 9659172
E-mail	wisupport@commscope.com

**Africa & Middle East:**

<b>Middle East &amp; North Africa</b>	
<b>CommScope Solutions International Inc. (Branch)</b>	
Mail	PO Box 48 78 22 Unit 3206, Floor 32, Jumeirah Business Center 5, Jumeirah Lakes Towers, Dubai United Arab Emirates
Phone	+971 4 390 09 80
Fax	+971 4 390 86 23
E-mail	wisupport@commscope.com

<b>South Africa</b>	
<b>Andrew Wireless Solutions Africa (PTY) LTD</b>	
Mail	11 Commerce Crescent West Eastgate, Sandton PO Box 786117 Sandton 2146 South Africa
Phone	+ 27 11-719-6000
Fax	+ 27 11-444-5393
E-mail	wisupport@commscope.com

*table 1-1 List of international contact addresses*

## 2. Introduction

### 2.1. Purpose

Mobile telephone and public safety systems transmit signals in two directions between base transceiver station (BTS) and mobile stations (MS) within the signal coverage area to carry voice and data traffic.

If weak signal transmissions occur within the coverage area because of indoor applications, topological conditions or distance from the transmitter, extension of the transmission range can be achieved by means of an optical distributed antenna system (DAS).

Office buildings, sports arenas, college campuses, industrial parks, and other areas of high demand require the specialized capacity boost that an optical DAS can provide to meet increasing customer demands for voice and data.

An optical DAS contains optical Master Units and a sufficient number of Remote Units to provide the necessary coverage. The number of the Remote Units depends on the coverage requirements of the DAS. The Remote Units are connected to the Master Unit with optical links.

The Master Unit is the connection to the Base Transceiver Stations. The configuration of a Master Unit depends on the number of the Remote Units and the frequency range.

RF signals are transported to and from the remote units via optical fibers.

### 2.2. ION-U High Power Remote and Extension Units

The ION-U is an optical fiber based DAS system that efficiently takes the outputs of multiple Base Transceiver Stations (BTS) sectors and converts those RF signals to optical to send them over fiber optic cables to remote units to provide coverage in indoor and outdoor locations. The system supports both low power and high power remotes units and SISO and MIMO operation.

The ION-U H 19P2 is a high-power multi-operator 1900 MHz band Extension Unit (EU). It works in conjunction with a Master Unit in the ION-U optical distribution system and is connected to the main Remote Unit via an extension cable bridge.

The Extension Unit adds an additional band (1900 MHz) to the main Remote Unit using the same fiber allowing multiple operators to transport signals to the DAS. The additional service or frequency band provided by the Extension Unit is achieved without any impact on the installed network.

The compact mechanical design is specifically architected to be mounted inside poles or next to the main Remote Unit with a minimal visual impact. A shroud is available to mount the RU and EU in a single protected structure.

## 3. Functional Description

### 3.1.1. Fan Protection Kit

In order to protect the fan unit in outdoor use (e.g. against rain), a protective cover is delivered with the unit that can be mounted over the fan unit. For indoor applications, mounting of the fan-protection kit is not mandatory.

### 3.1.2. Accessories

A number of accessories are available for the Remote Unit such as shrouded housing, connecting boxes, and iso-trafo kits.

A short version of the Extension Unit designed to be mounted in a protective shroud is also available. The shroud provides protection for the Remote Unit, an Extension Unit, and an optional cross-band coupler. The short versions of the RU and EU are required when using the shroud.



figure 3-1 Shroud with RU and EU


## 4. Commissioning

### 4.1. High Power RU Mechanical Installation

#### 4.1.1. General


Read the health and safety warnings in chapter 1.2.

1. **Warning:** Do not install the unit in a way or at a place where the specifications outlined in the Environmental and Safety Specifications leaflet of the supplier are not met.

 2. **WARNING: IMPROPER INSTALLATION CAN LEAD TO EQUIPMENT FALLING CAUSING SERIOUS PERSONAL INJURY OR DAMAGE TO EQUIPMENT.** Installer must verify that the supporting surface will safely support the combined load of the electronic equipment and all attached hardware and components. The supporting wall should be solid wood or concrete using appropriate screws and dowels (wall anchors).

3. **Warning:** It is recommended to use the mounting hardware delivered by the manufacturer only. If different mounting hardware is used, the specifications for stationary use of the Remote Unit must not be exceeded.

 **Note:** Exceeding the specified load limits may cause the loss of warranty!

 4. **Warning:** The unit is considerably heavy. Make sure that a suitable mounting surface is used. Ensure there is adequate manpower to handle the weight of the system.

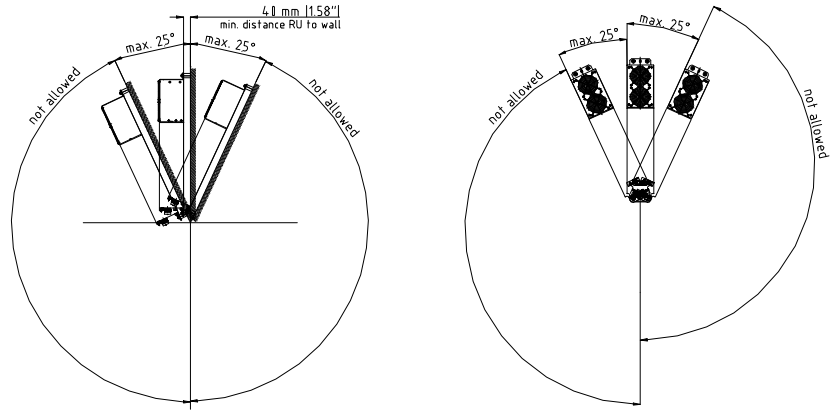
5. **Caution:** Due to power dissipation, the Remote Unit may reach a very high temperature. Ensure sufficient airflow for ventilation.

6. **Note:** When connecting and mounting the cables (RF, optical, mains, ...) ensure that no water can penetrate into the unit through these cables.

7. **Note:** Observe all additional rules or restrictions regarding mounting that apply to specific Remote Unit types.

8. **Note:** Observe all additional rules or restrictions regarding mounting that apply to specific Remote Unit types. For details refer to the mechanical specifications in the data sheet for the unit. Install the unit vertically with the fan unit at the top. A maximum tilt angle of 25° from a vertical position must be maintained, as shown in the following illustrations:





G1138M4

- 9. A spacing of **40 mm (1.66 inch)** around the unit is required.
- 10. To ensure sufficient airflow when mounting the unit in enclosed spaces, two lid openings (one for the air inlet and the other for the air outlet) must be provided. Do not block these air inlets and outlets when mounting the remote unit. The size of each opening must equal at least **12 x 12 cm (144 cm<sup>2</sup>)**. Ensure that there is no thermal short circuit between the air inlet and air outlet.

If any different or additional mounting material is used, ensure that the mounting remains as safe as the mounting designed by the manufacturer. Ensure that the static and dynamic strengths are adequate for the environmental conditions of the site. The mounting itself must not vibrate, swing or move in any way that might cause damage to the Remote Unit.

Specified torques must be observed for certain mounting procedures according to the following table:

Type	Tallow-drop screws	Hex nuts	Spacing bolts		PG (plastic)	PG (aluminium)
Thread	M 4	M 8	M 4	M 8	PG 13.5	PG 29
Specified torques	3.3 Nm	27 Nm	2.3 Nm	27 Nm	3.75 Nm	10 Nm

table 4-1 Specified torques

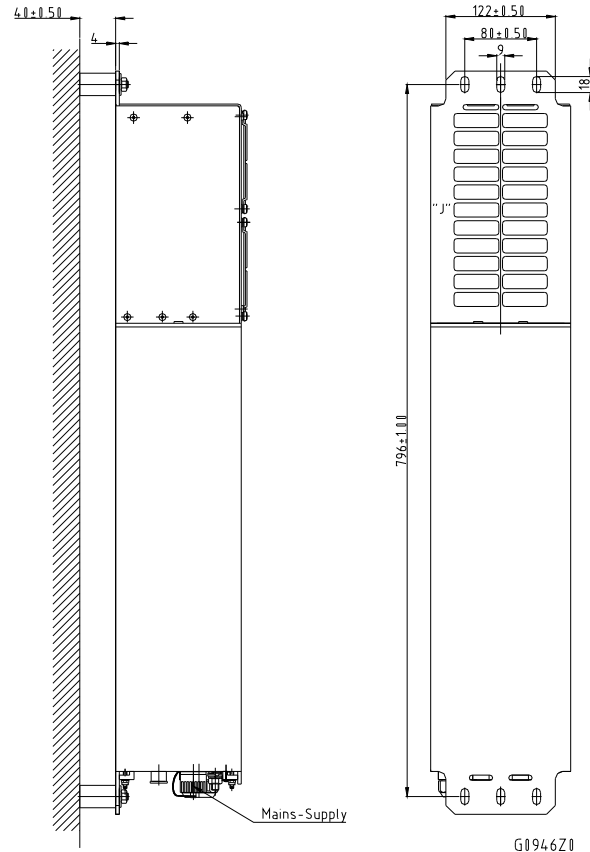
The mounting procedures for a stand-alone remote unit without optional accessories are described and illustrated in the following sections. For further information regarding special mounting procedures including mounting of accessory equipment, please see the separate accessories manual.

### 4.1.2. Wall-Mounting Procedure

- Check the suitability of the wall-mounting kit and the wall.

1. Mark the position of the drilling holes (for measurements refer to *(figure 4-1 Wall Mounting)*). Drill four holes at the marked positions and insert dowels\*.

- Use a cap nut or lock nut to screw the four dowel screws into the dowels and put the distance tubes over the screws.
- Hang the mounting brackets of the remote unit into the screws, and fasten them immediately using the washers and nuts.
- Ensure that there is free access to the electrical connections as well as to the cabinet. The approved bending radius of the connected cables must not be exceeded.



*figure 4-1 Wall Mounting*

\* The dowels are not included with the delivery because the suitable type depends on the on-site conditions (material of wall). Use dowels or other fasteners that are the most appropriate for the mounting surface.

**It is the responsibility of the installer to verify that the supporting surface will safely support the combined load of the electronic equipment and all attached hardware and components and to ensure that the RU/EU is safely and securely mounted.**

### 4.1.3. Pole Mounting Procedure

Standard mounting hardware cannot be used to mount the remote unit to a pole, a column, or other similar structures. Additional hardware must be used for this type of installation. The pole-mounting kit includes two mounting brackets with screw band (worm gear) clamps to mount the brackets to the pole and two nuts, flat washers, and lock washers per bracket to attach the remote unit to the bracket.

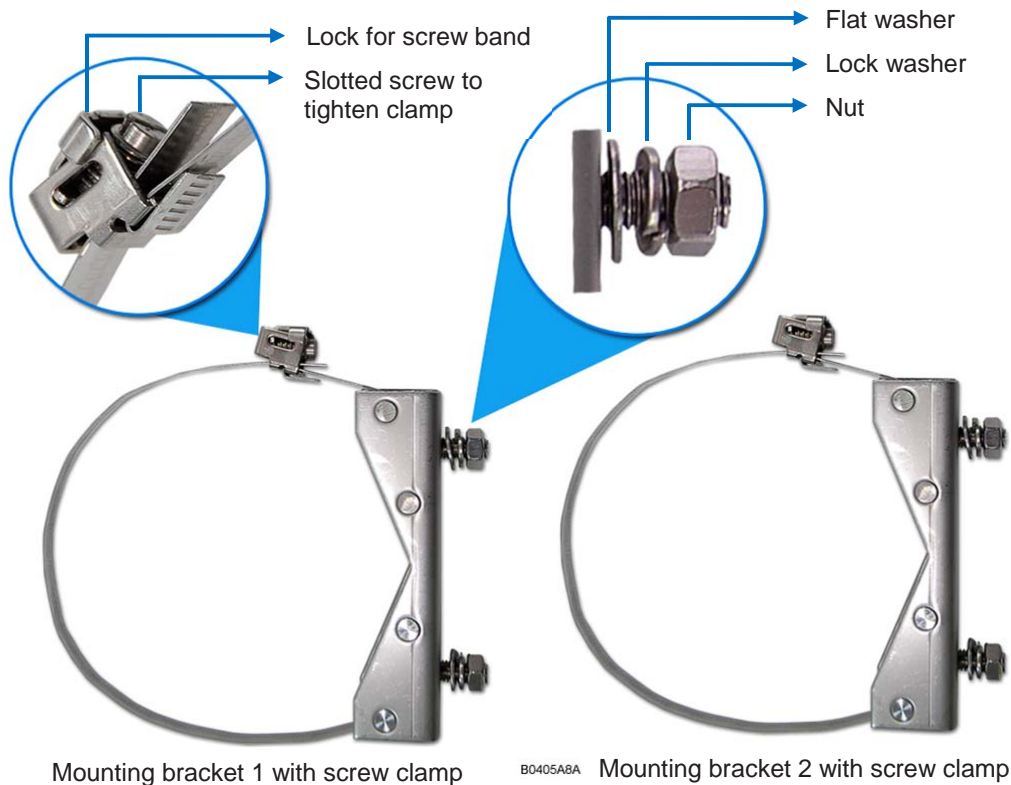


figure 4-2 Pole mounting kit

- Use the screw bands to fasten the two brackets to the pole as illustrated in *figure 4-3 Pole mounting drawing*.
- Place the bands around the pole or post and feed the loose end into the lock as shown and tighten the slotted screw securely. When the screw is turned clockwise, it acts as a worm drive pulling the threads of the band causing the band to tighten around the pole.

**Note:** When fastening the brackets make sure that they are installed congruently and not at an angle to each other. To determine the distance between the clamps refer to *figure 4-1 Wall Mounting for measurements*.

- Hang the remote/extension unit mounting brackets onto the threaded bolts of the bracket, and fasten them using the flat washers, spring (lock) washers and M8 nuts.

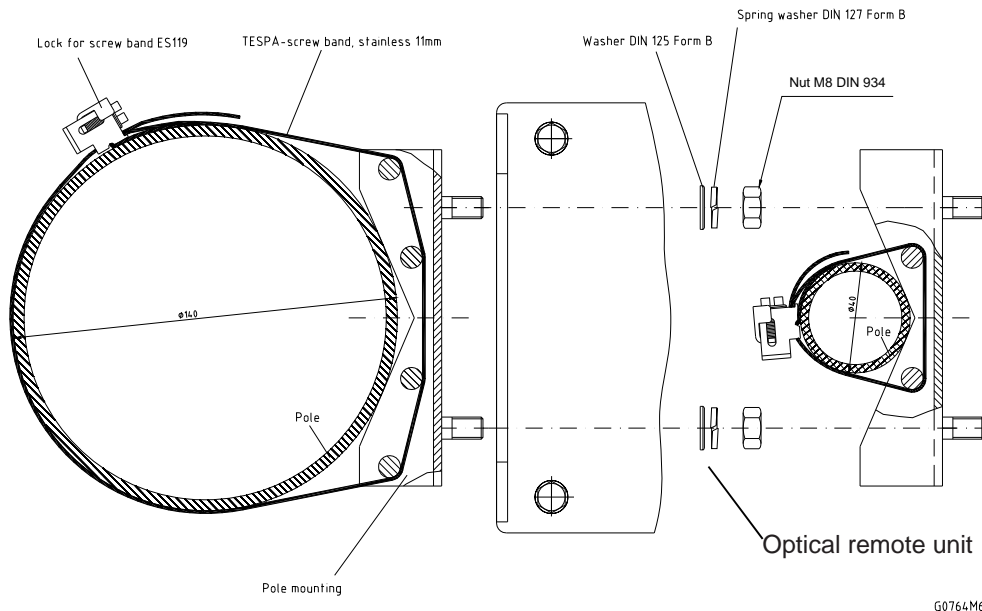


figure 4-3 Pole mounting drawing

Ensure that there is free access to the electrical connections as well as to the cabinet. The approved bending radius of the connected cables must not be exceeded.

#### 4.1.4. Mounting of Fan Protection

Fan protection is required for the outdoor usage of a stand-alone remote unit. Mounting of the optional fan protection is described below.

- To install the protective cover of the fan protection kit, first remove the four screws with their respective lock washers from the cover of the air inlet of the remote unit, and replace them with four spacing bolts M4.0x30 with the four lock washers M4.0 DIN125 that are part of the fan protection kit.
- Place the protective cover into position by aligning its four bore holes over the spacing bolts and fasten it using the original lock washers and screws of the remote unit. (These lock washers and screws are also part of the fan protection kit and can be used as spare parts in case of loss.)

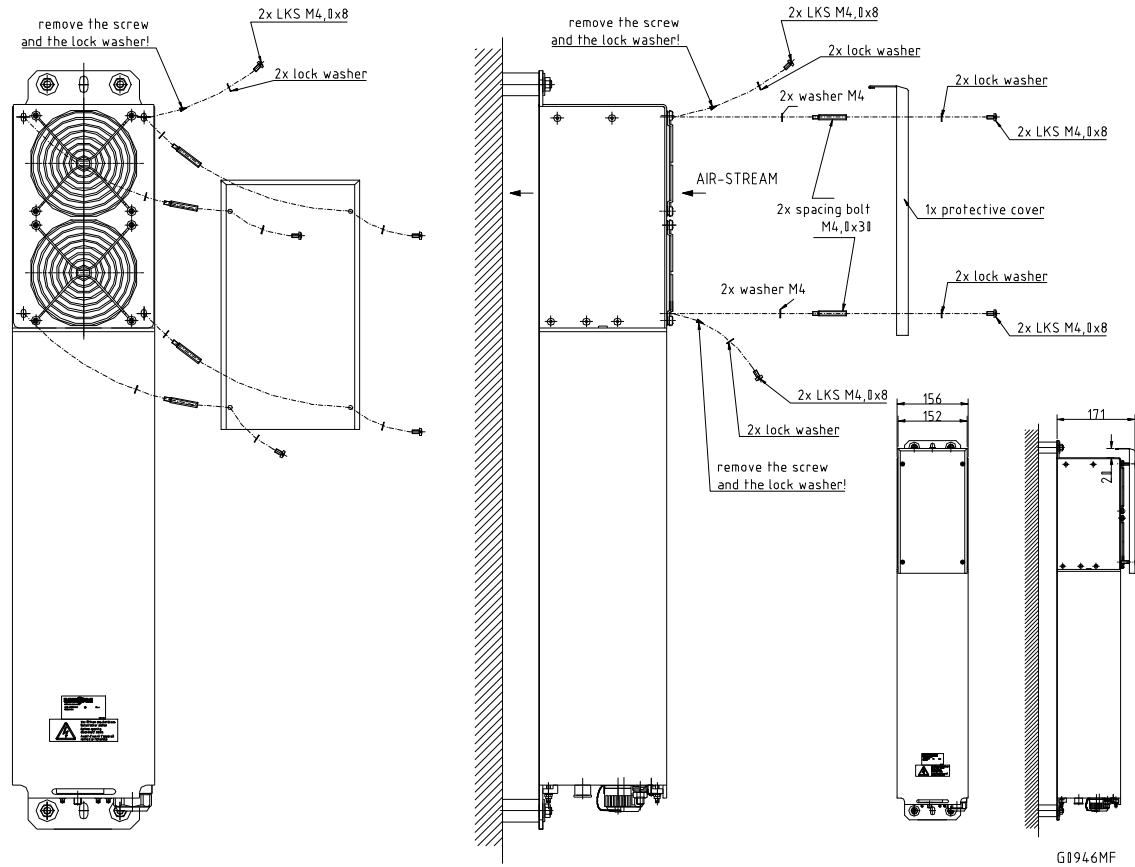


figure 4-4 Mounting procedure for fan protection

## 4.2. Electrical Installation

### 4.2.1. General

Read the health and safety warnings in chapter 1.2.



- Warning:** This unit contains dangerous voltages. Loss of life, severe personal injury, or property damage can be the result if the instructions contained in this manual are not followed.
- Caution:** It is compulsory to ground (earth) the unit before connecting the power supply. A grounding bolt is provided on the cabinet to connect the ground-bonding cable.
- Caution:** Although the remote unit is internally protected against overvoltage, it is strongly recommended to ground (earth) the antenna cables close to the antenna connectors of the remote unit for protection against atmospheric discharge. In areas with strong lightning, it is strongly recommended to install additional lightning protection.
- Caution:** If the mains connector of the remote unit is not easily accessible, a disconnect device in the mains power circuit must be provided within easy reach.
- Caution:** Before connecting or disconnecting the mains connector at the remote unit, ensure that mains power supply is disconnected.
- Caution:** Make sure that an appropriate circuit breaker acting as a disconnect device (as required by IEC/EN60950-1) and an overcurrent limiting device are connected between mains power and the Remote Unit.
- Caution:** A connection of the mains supply to a power socket requires the power socket to be nearby the remote unit.
- Caution:** Incorrectly wired connections can destroy electrical and electronic components.
- Caution:** To avoid corrosion at the connectors caused by electrochemical processes, the material of the cable connectors must not cause a higher potential difference than 0.6 V (see electrochemical contact series).
- Note:** Use an appropriate torque wrench to tighten the 7/16 DIN-type (1 ¼ -inch opening) antenna connectors to a coupling torque of 25 N-m / 19 ft lb. Torque wrench item no. 244377, available from the CommScope e-catalog, is recommended. Do NOT use your hands or any other tool (e. g. a pair of pliers)! This might cause damage to the connector and lead to a malfunction of the Remote Unit or increased PIM.
- Caution:** For unstabilized electric networks, which frequently generate spikes, the use of a voltage limiting device is advised.

12. **Caution:** The unit complies with the surge requirement according to EN 61000-4-5 (fine protection); however, installation of an additional medium (via local supply connection) and/or coarse protection (external surge protection) is recommended depending on the individual application in order to avoid damage caused by overcurrent.
13. **Caution:** Observe the labels on the front panels before connecting or disconnecting any cables.

#### 4.2.2. Connections

The ION-U EU ports and connectors shown below are located at the base of the EU.

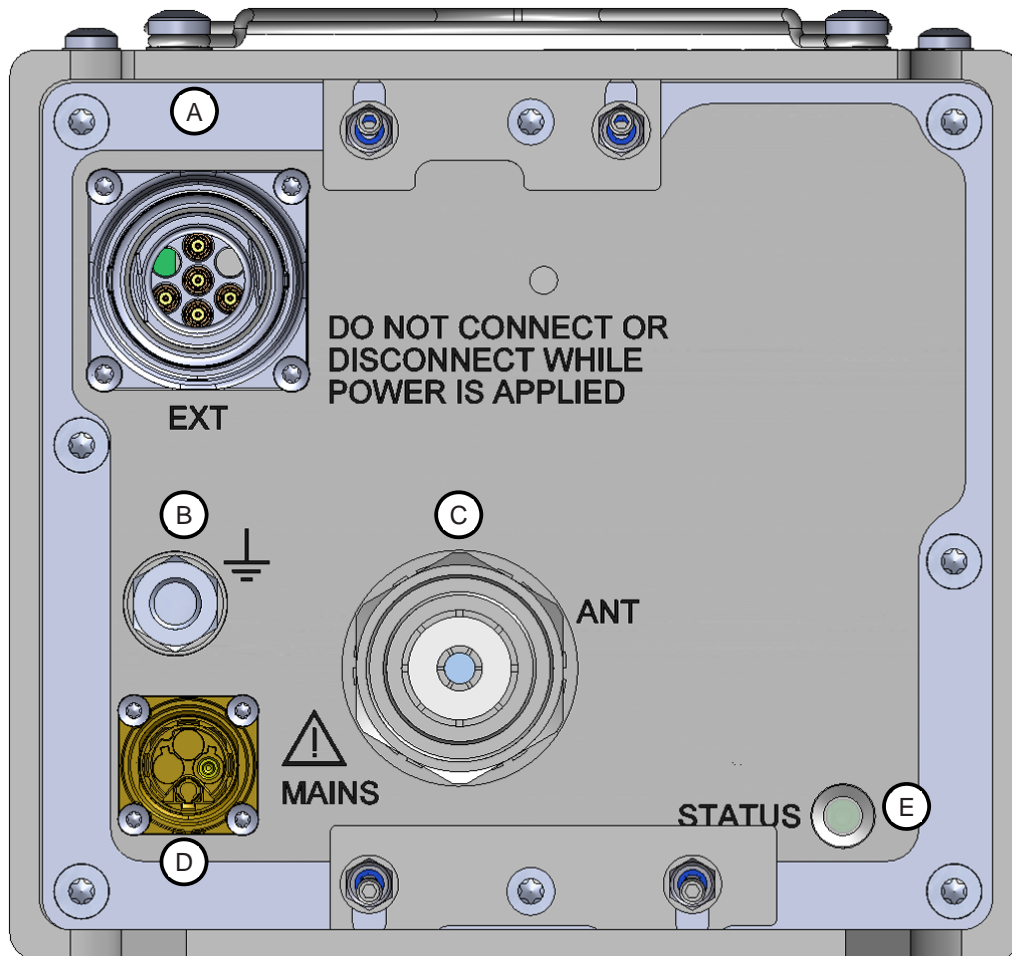


figure 4-5 ION-U H 17P2 Connectors

ION-U High Power EU Connectors/Indicators			
	Port/Conn	Purpose	Type
(A)	EU	This connector is used to interconnect to an Remote unit using a cable bridge.	Radiall Opus M424400- 003
(B)	Grounding Bolt	Ground (earth) bolt for connecting the mandatory ground cable to the EU	M8 bolt, hex nut, & washers
(C)	ANT	This connector is used for transmitting and receiving signals to and from an antenna, antenna splitter, or cross-band coupler.	7/16 DIN type female
(D)	MAINS	This connector provides the power to RU models that use standard AC (100 to 240 Vac) power.	Coninvers M17 –Series P20, 4-Pin
(E)	STATUS	This LED provides a visual warning of an alarm condition. The color of the LED indicates the severity of the alarm.	LED

table 4-2: ION-U High Power EU Connectors



### 4.2.3. Grounding (Earthing)

The RU must be grounded (earthed).

1. Connect an earth-bonding cable to the grounding bolt connection provided on the outside of the remote unit (near the Mains connector) as shown in figure 4-6. Do not use the grounding connection to connect external devices.



figure 4-6 Grounding bolt

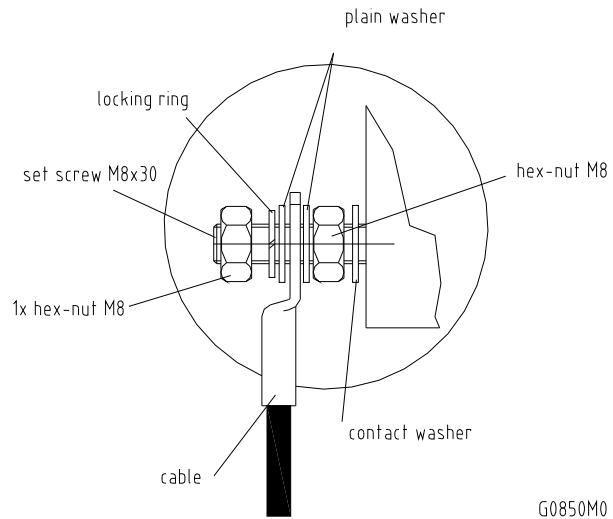


figure 4-7 Grounding bolt, schematic view

2. After loosening the hex nut, connect the earth-bonding cable between the two washers as illustrated in the figures above.
3. Then, fasten all parts again by tightening the hex nut.
4. Connect the other end of the ground wire to a suitable permanent ground following local electrical code practices.

### 4.2.4. Connection of the Antenna Cable

The remote unit has one 7/16 DIN type antenna connector labelled “ANT”. For its location please refer to chapter 4.2.2 *Connections*. When attaching the antenna cable connector, it is recommended to refer to the corresponding documentation of the connector manufacturer. The bending radius of the antenna cable must remain within the given specifications.

When pairing this EU with an RU such as the ION-U H 17P2, the antenna ports of both units can be connected to separate antennas or to an external crossband coupler (CBC) to combine the multiple frequency bands of the two units to a single antenna or antenna splitter.

The selection of cable and antenna is an important consideration. On the one hand, a cable with higher loss is less expensive but, on the other hand, it impairs performance.



Use an appropriate torque wrench to tighten the 7/16 DIN-type (1 ¼ -inch opening) antenna connectors to a coupling torque of 25 N-m / 19 ft lb. Torque wrench item no. 244377, available from the *CommScope e-catalog*, is recommended. Do NOT use your hands or any other tool (e. g. a pair of pliers)! This might cause damage to the connector and lead to a malfunction of the Remote Unit or increased PIM.



To minimize passive inter-modulation (PIM) distortion, attention must be paid to the physical condition of the connector junctions. Do not use connectors that show signs of corrosion on the metal surface. Prevent the ingress of water into the connector. Attach and torque the connectors properly.

An example of the antenna port connections for a Remote Unit paired with an Extension Unit using an optional crossband coupler is shown below.

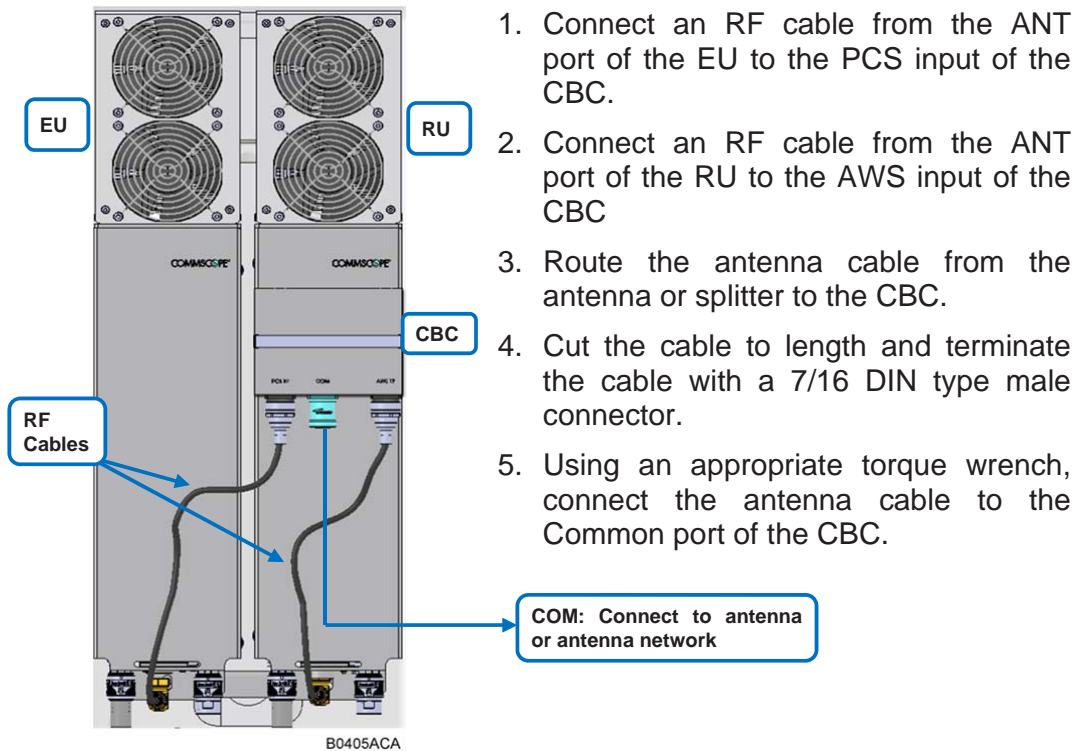


figure 4-8 Antenna port to CBC wiring

### 4.2.5. Mains Power Connection

Before connecting electrical power to the units, the system must be grounded as described in chapter 4.2.3.

Mains power must be connected at the mains connector of the unit (see chapter 4.2.2 *Connections*).

Use the following method to install and connect the Mains power to the RU:

1. Locate the Mains power cable that was delivered with the RU.
2. Locate or install a suitable power junction box or receptacle near the RU and route the power cable from the power source to the RU. Do not connect the cable to the RU's Mains connector at this time. The power source must be interruptible.
3. The Mains cable must be properly secured observing local regulations and electrical codes. Be sure to allow enough slack in the cable at the RU to plug or unplug the cable into the Mains connector of the RU.
4. Wire the power cable to the junction box or receptacle. Refer to the color code and pin numbers shown in *figure 4-10 (AC cable)*, and *table 4-3*.
5. With the cable's Mains plug disconnected from the RU, turn the circuit breaker on, unscrew the plug's protective cover, and carefully test the plug with a voltmeter to ensure that the voltage and polarity are correct.
6. Once the testing has been completed, turn off the circuit breaker.
7. Unscrew the protective cover from the Mains connector of the RU (*figure 4-9*).
8. Insert the plug into the Mains connector and tighten the clamping ring until it is hand tight. Do not over-tighten the clamping ring.



*figure 4-9 Mains power connector*

The Mains cable is part of the delivery. The wiring of the mains cable is as follows:

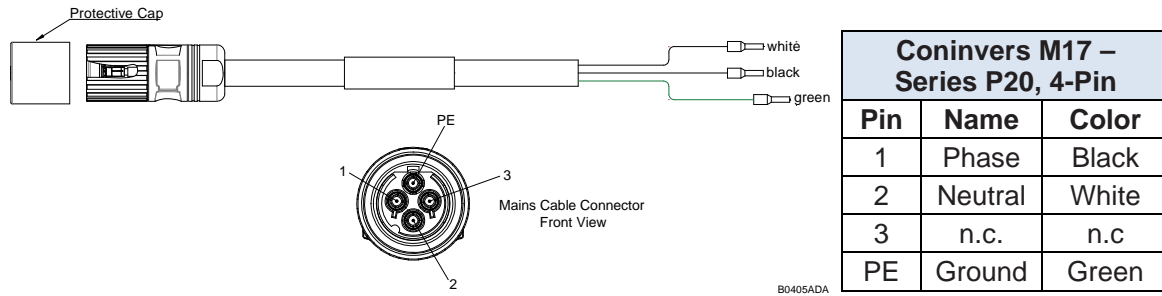




figure 4-10 Mains power cable - AC

table 4-3 AC power cable

 For the AC power supply connection, a minimum cross section of 1.5 mm<sup>2</sup> is required. Each wire must observe the applicable national regulations regarding loop impedance, voltage drop, and methods of installation. Make sure to connect the correct voltage to the unit.

 **Note:** Do not connect or disconnect the power cord at the mains connector while power is on. Turn off mains power\* before connecting the power cord at the remote unit, then, engage mains again.

\* Mains power must be interrupted with an external mains breaker. For the mains breaker, observe the following recommendation:

120 Volt / 20 Amp max. or 240 Volt / 16 Amp, single-phase, 50 / 60 Hz AC service is needed, i.e. the external AC breaker should be 20 Amps max. for 120-Volt service or 16 Amps for 240-Volt service.

### 4.2.6. Extension Unit Port Connection

The EU connector is used to connect a cable bridge from the Extension Unit to the RU. This port provides control and RF signaling to and from the Remote unit.

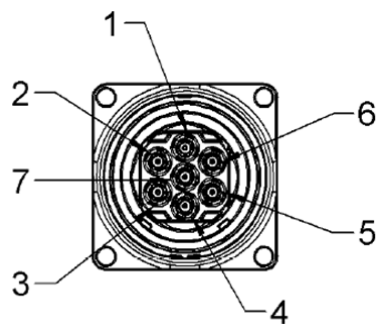


figure 4-11 EU (Extension Unit) connector

7-Pin	
Pin	Assignment
1	RF
2	n.c.
3	System Bus
4	RF (if Pin installed)
5	System Bus
6	n.c.
7	RF

table 4-4 EU Connector

Connect the cable bridge (corrugated flexible cable) between the EU port connector of the RU and the EU port of the Extension unit.



B0405ABA

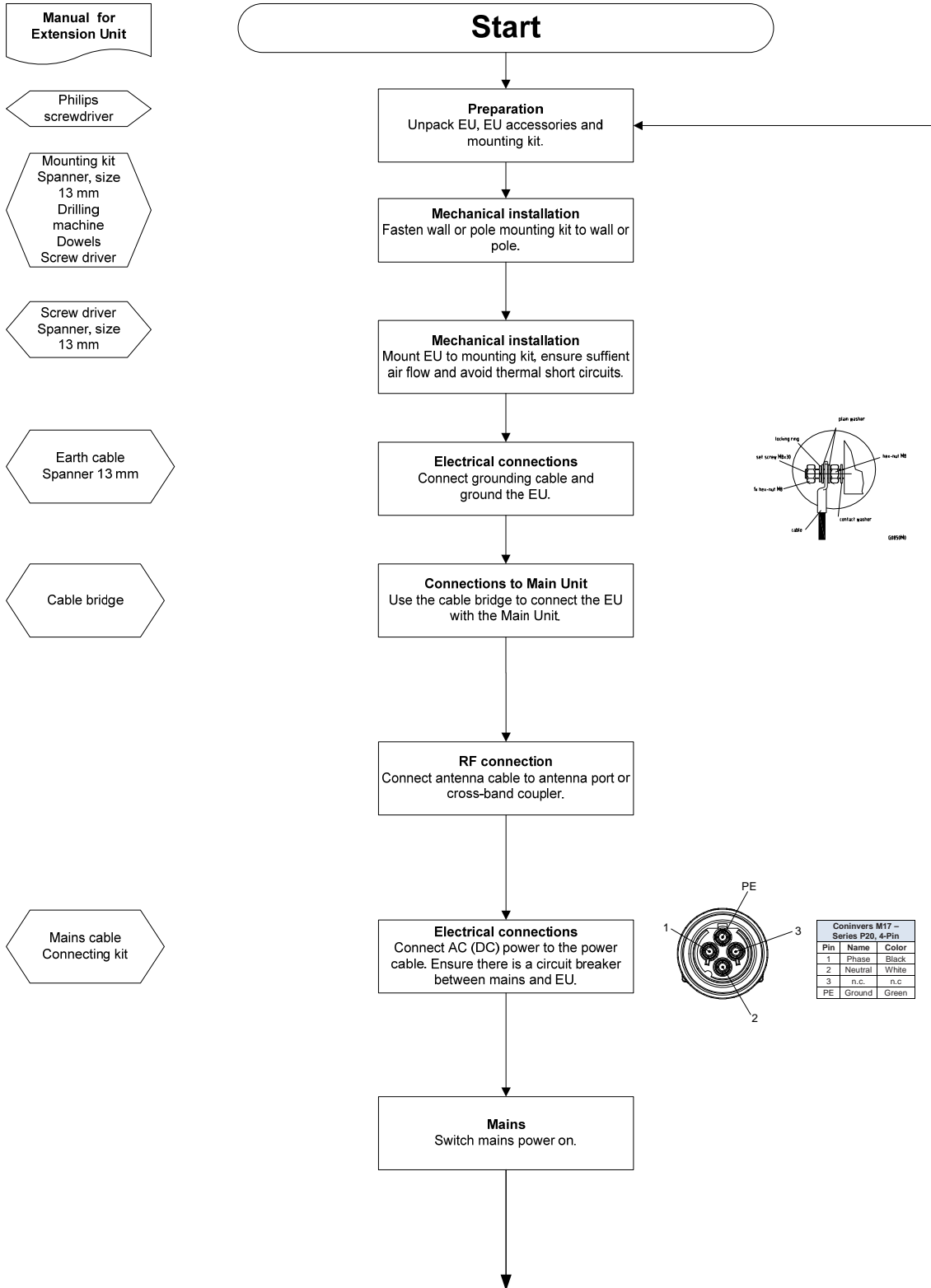
*figure 4-12 Extension unit cable bridge*

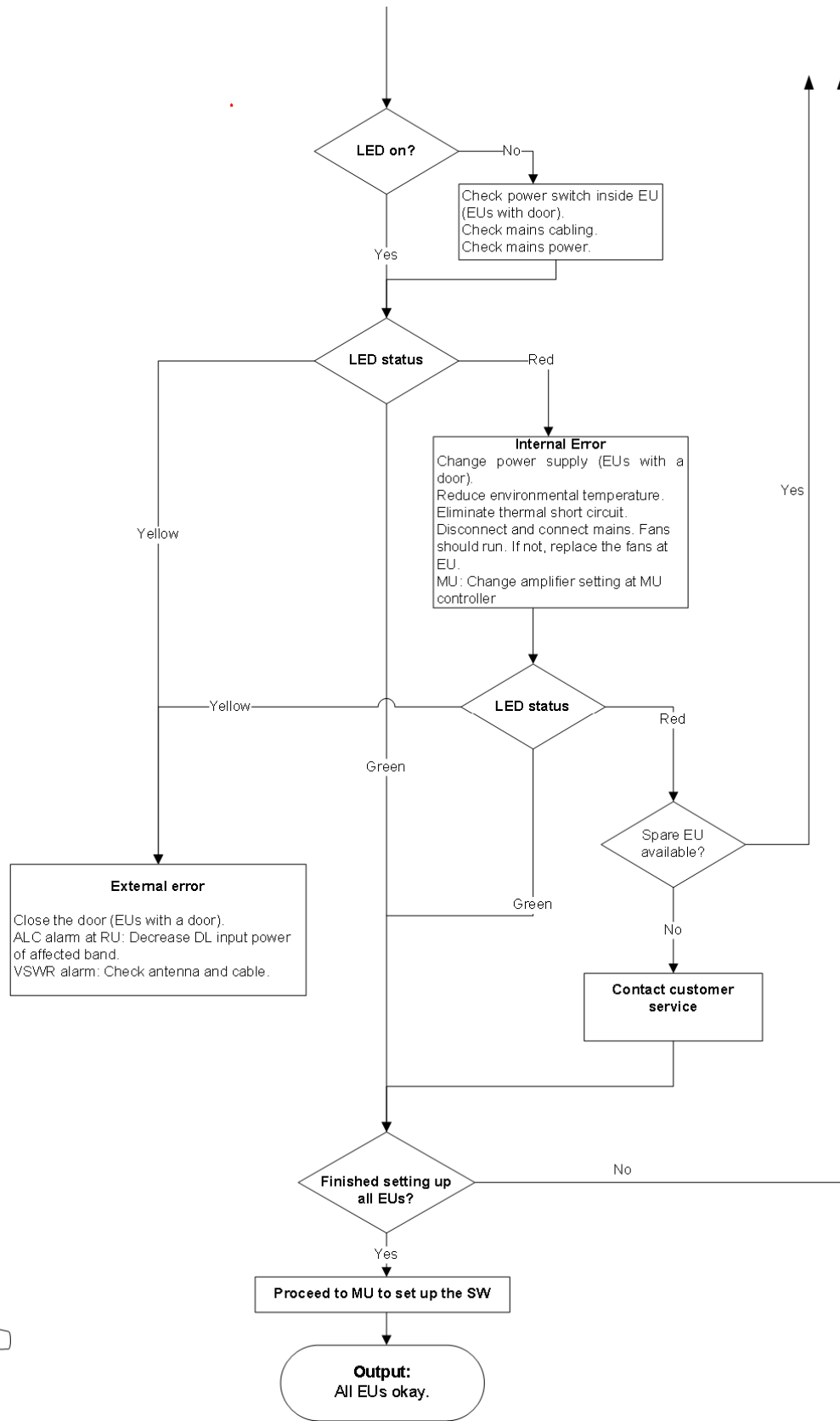
### 4.3. Commissioning

Read the health and safety warnings in chapter 1.2 *Health and Safety Warnings* as well as the description carefully to avoid mistakes and proceed step by step as described!

- Do not operate the remote unit without terminating the antenna connectors. The antenna connectors may be terminated by connecting them to their respective antennas or to a dummy load.
- Only qualified personnel should carry out the electrical, mechanical, commissioning, and maintenance activities that require the unit to be powered on when open.
- When opening the remote unit do not damage the warranty labels on the internal devices. The warranty is void if the seals are broken.
- Ensure that all connections have been performed according to chapter 4.2.2 *Connections*.

### Commissioning an ION-U Extension Unit







## 5. Alarms

### 5.1. Bite and Alarms

The Built-In Test concept comprises the monitoring of the power supplies, the power amplifiers and the optical interface.

All occurring alarms can be checked via software at the master unit.

### 5.2. Handling of Alarms

As soon as the software acknowledges a valid alarm, a message is transmitted to the master unit.

If the reason for the alarm has been cleared or if the alarm should continue, a new alarm message will not be repeated. If there was an interruption of at least five seconds after acknowledgement, a new alarm message will be generated.

### 5.3. Alarm Status

For details refer to the corresponding software documentation of the master unit.

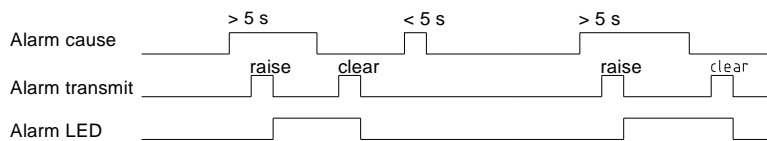
### 5.4. Status LED Alarms

For local supervision, a status LED on the connector flange of the remote unit provides a visual indication of possible reasons for alarms. This table shows possible on-site measures that could be checked before referring to the master unit alarm list.

For local supervision, a status LED on the connector panel of the remote unit provides a visual warning of an alarm condition. The color of the LED indicates the severity of the alarm. Detailed alarm information is available through the ION-U software interface. This table lists the alarm conditions and possible on-site measures that could be performed to resolve the issues responsible for triggering the alarms.

Status LED Indication	Alarms	Possible on-site measures
Green	No alarm → Status ok	
Orange	Door alarm	Close the door (RUs with door).
	<i>Alarms not directly related to RU:</i>	
	External alarms	Check externally connected devices.
	Optical alarm Rx	Check fiber loss of optical link. Check optical connectors. Clean optical connectors. <i>(MU: Check optical output power of corresponding OTRx at master unit).</i>
	ALC alarm	<i>(MU: Decrease DL input power of affected band).</i>
Red	<i>Alarms directly related to RU:</i>	
	Power 28 V	Change power supply (RUs with door). Replace the affected remote unit.
	Temperature	Reduce environmental temperature. Eliminate thermal short circuit.
	Fan	Disconnect and connect mains. Fans should run briefly (SW version > 2.4). If not, replace the fans at RU.
	I <sup>2</sup> C	<b>Disconnect and connect mains.</b>
	Optical alarm Tx	-
	Amplifier "Power Down"	<i>(MU: Change amplifier setting at MU controller).</i>
Status LED off	Mains	Check power switch inside of RU (RUs with door). Check mains cabling. Check mains power.

table 5-1 Status LED alarms



V1651A2

figure 5-1 Alarm triggering

For the position of the status LED see chapter 4.2.2 Connections.

Explicit troubleshooting is available in the MU software, (software manual or WEB Interface).

## **5.5. Troubleshooting**

The status of the remote unit can be checked via the master unit (for details please refer to the software manual of the Master Controller). Locally, the status can be checked at the LED, see chapter *5.4 Status LED Alarms*.

## 6. Maintenance

### 6.1. General

Read the health and safety warnings in chapter 1.2.

**Note:** The remote unit does not require preventative maintenance measures.

**Note:** To prevent malfunctions of the cooling system due to dirt or pollution, it is recommended to clean the heat sink at regular intervals. These cleaning intervals depend mainly on the location of the remote unit and the corresponding degree of pollution.

Maintenance of the ION-U High Power RUs should be performed by replacing only components that are described in this chapter. In order to maintain the warranty, avoid unintentional damage to the seals on the modules.

The spare parts list, (see chapter 7.3) includes only units that can be replaced in the field without tuning or soldering work.

**Note:** When sending back the unit, use appropriate packaging. Use of the original packaging for shipping the unit is strongly recommended!

**Note:** Defective parts should only be replaced by original parts from the supplier. All service work performed inside the housing is performed at the users own risk.

**Note:** Ensure the Remote Unit has been disconnected from mains power during maintenance.

**Note:** Label any unlabelled cables before disconnecting them to ensure correct reconnection.

For most maintenance procedures, appropriate tools are required to ensure correct handling. All of these tools can be ordered from the supplier.

**Note:** All Remote Unit screws have a right-hand thread, and are tightened by turning the screws clockwise and loosened by turning them counter-clockwise with an appropriate tool.

Due to the design of the remote unit, the fan unit is the only component that should be replaced in the field. Please contact the supplier for replacement of any other components.

## 6.2. Replacing the Fan Unit

Replacement of the fan unit is not required as a preventative measure. Only when an alarm indicates a malfunctioning of a fan, must the unit be exchanged.

**Note:** Please observe that the fan unit can only be replaced as a whole. Do not remove the fans separately.

Read the health and safety warnings in chapter 1.2 *Health and Safety Warnings* as well as the instructions in chapter 6.1 *General* before starting with the replacement.

1. **Switch off the remote unit. Make sure that mains power is disconnected for the following replacement procedure.** Then, proceed as follows:

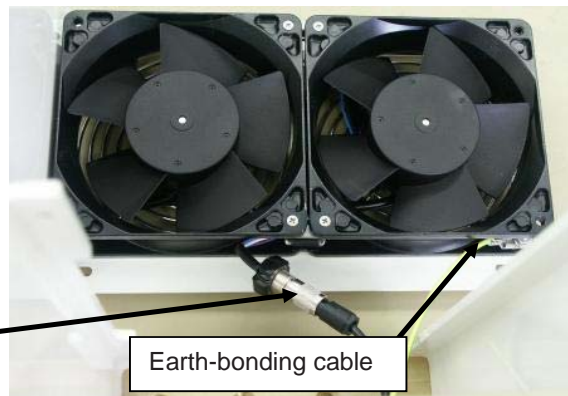
2. Loosen the four tallow-drop screws M4x8 by which the fan plate is attached to the cabinet. Remove the four screws and the corresponding washers.



B0092ALA

3. Remove the fan unit – by putting slight pressure on the fan plate cover – moving it to a position that allows access to the fan connector and the earth-bonding cable.

4. Unscrew the fan connector and then disconnect the earth-bonding cable.



B0092A5A

**Note:** To observe the specified torque of 650 Ncm for an M5 thread, use an appropriate tool for the following procedures.

5. To mount the new fan unit, reconnect the earth-bonding cable and the fan connector (see *step 4*). Then, place the fan unit back into its original position and press it back into position as shown below:




B0092AJA



B0097AKA

6. Fasten the complete fan unit to the cabinet with the four tallow-drop screws M4x8 (see *step 2*). To prevent exceeding the specified torque of 330 Ncm, use an appropriate tool.

### 6.3. Cleaning the Heat Sink

 **Note:** Read the health and safety warnings in chapter 1.2 *Health and Safety Warnings* as well as the instructions in chapter 6.1 *General* before starting with the replacement procedure. Then, proceed as follows:

1. Switch off the remote unit. Make sure that mains power is disconnected for the following procedure.
2. Remove the fan plate with the fan unit from the remote unit as described in chapter 6.2 *Replacing the Fan Unit*, steps 2 and 3.
3. Use compressed air (max. 5 bar) to dust, dirt, or other debris the heat sink from back to front.
4. If the dirt cannot be blown out completely and parts of it stick to the ribs of the heat sink, clean the parts concerned carefully from the front using e.g. a brush. Take care that the heat sink material is not scratched or damaged.
5. After cleaning the heat sink, remount the fan unit according to chapter 6.2 *Replacing the Fan Unit*, steps 5 and 6. Then, switch the remote unit back on.

# 7. Appendix

## 7.1. Illustrations

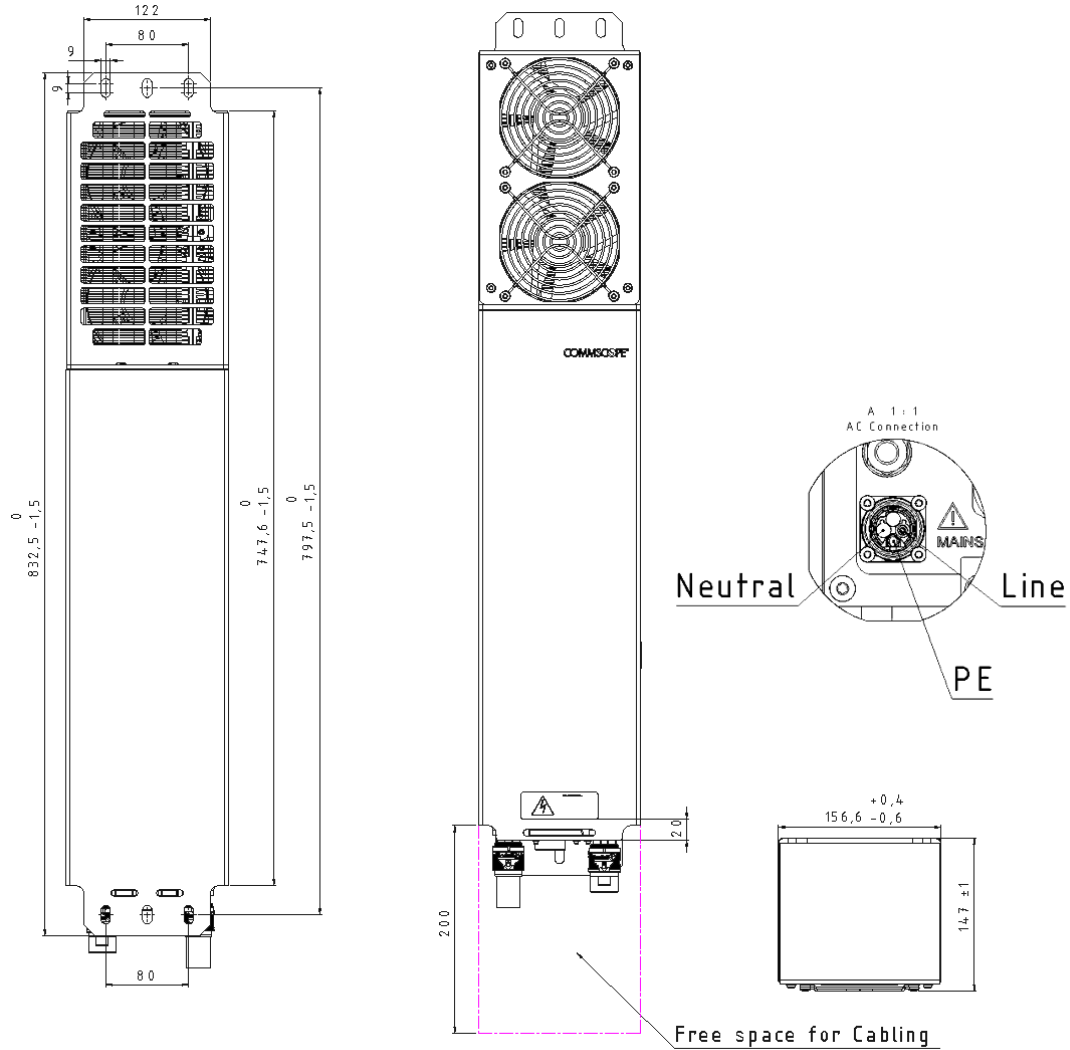


figure 7-1 Installation drawing-front and rear views



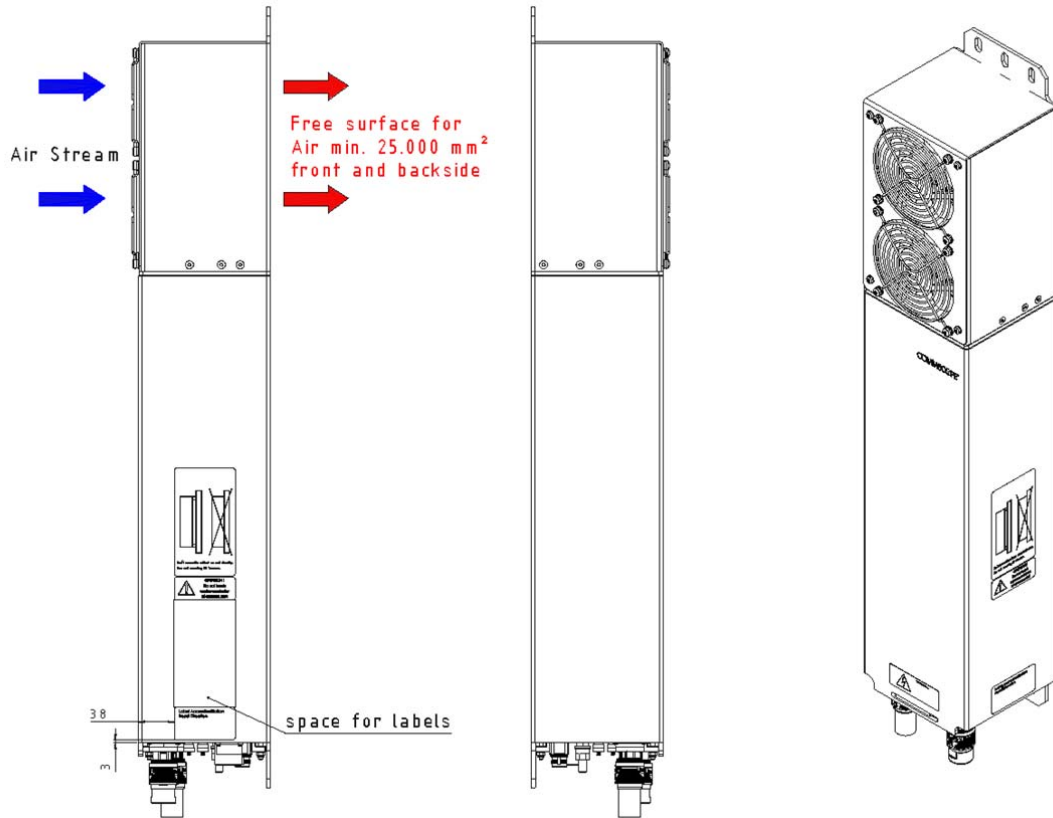


figure 7-2 Installation drawing-side views

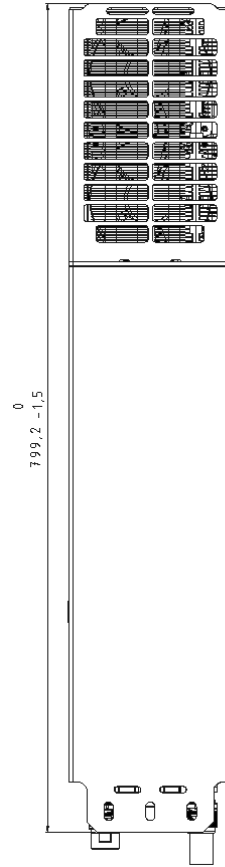


figure 7-3 Installation drawing-short version

## **7.2. Specifications**

Please refer to the *ION-U\_EU\_H\_19P2\_PA-106765.x-EN.GB* data sheet for the ION-U HP EU specifications.

## **7.3. Spare Parts**

Please contact your CommScope sales representative or DCCS Technical Support for a current ION-U HP EU parts list.

# 8. Index

<b>A</b>		<b>H</b>	
Alarms		Health and Safety Warnings.....	7
Alarm Status.....	35	<b>I</b>	
Bite and Alarms .....	35	Illustrations.....	42
Handling of Alarms .....	35	Installation	
Status LED .....	35	Electrical .....	24
ANT RF .....	26	Mechanical.....	18
<b>B</b>		<b>M</b>	
Block Diagram		MAINS.....	26
ION-U EU H 19P2.....	15	Mains cable.....	29
<b>C</b>		Maintenance .....	38
Cable bridge.....	31	Mounting	
CE Declaration of Conformity (DoC).....	10	Pole .....	21
Cleaning the Heat Sink .....	41	Wall .....	20
Commissioning		<b>P</b>	
General.....	32	Pole Mounting Procedure.....	21
CommScope.....	10	<b>R</b>	
Connecting electrical power.....	29	Replacement of Fan Unit.....	39
Connections		<b>S</b>	
Antenna .....	27, 28	Shroud .....	17
Connector Panel.....	25	Spare Parts .....	45
Contact Addresses		Status .....	26
Customer Support .....	11, 12	<b>T</b>	
Customer Support Addresses.....	11, 12	Troubleshooting.....	37
<b>D</b>			
Declaration of Conformity (DoC).....	10		
<b>E</b>			
EU connector.....	30		
Expansion Unit Port .....	26		
<b>G</b>			
Grounding (Earthing).....	27		
Grounding Bolt .....	26		

COMMSCOPE®

POWERED BY

