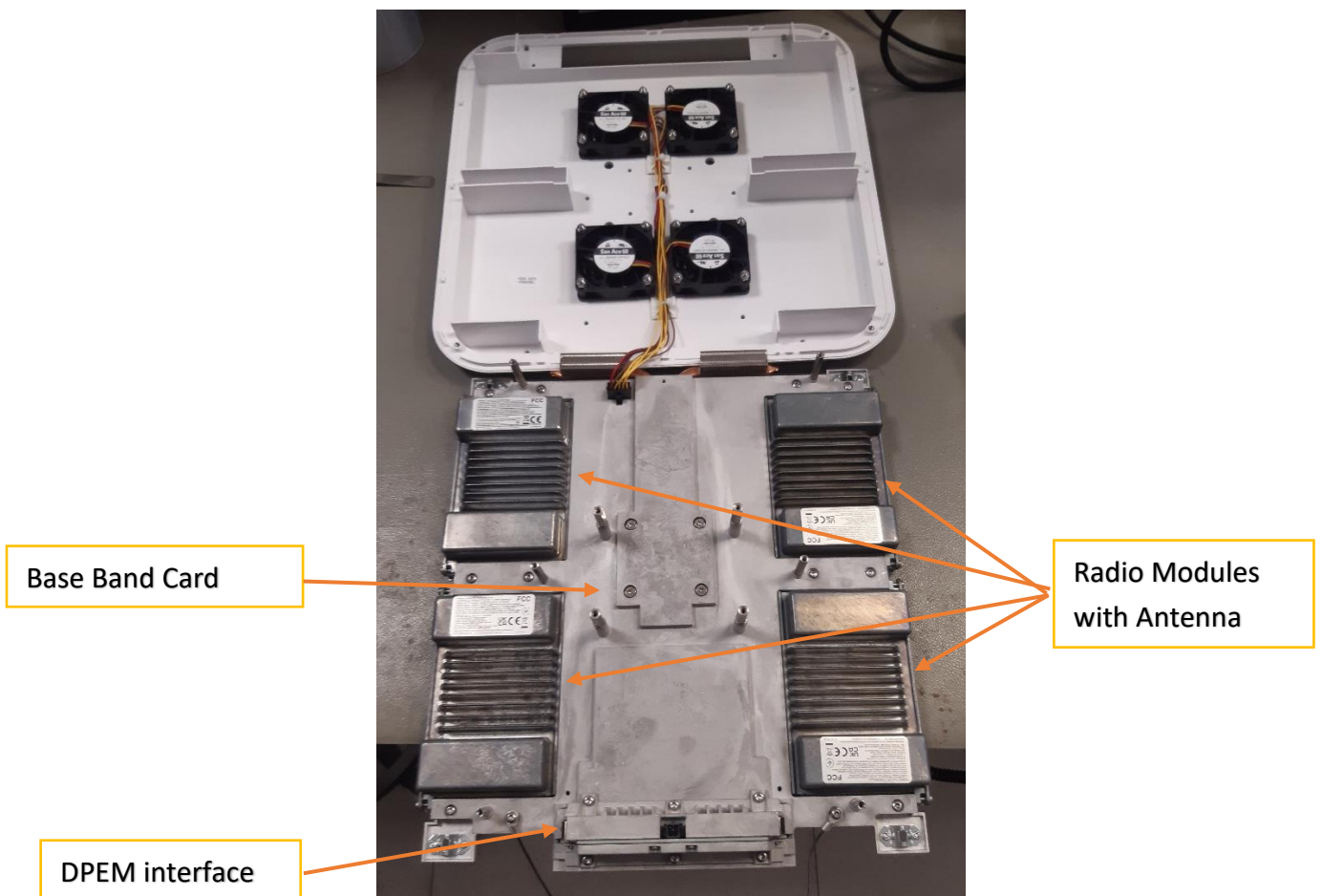


UAP 2 80-85/17E/19/37T – Internal photos

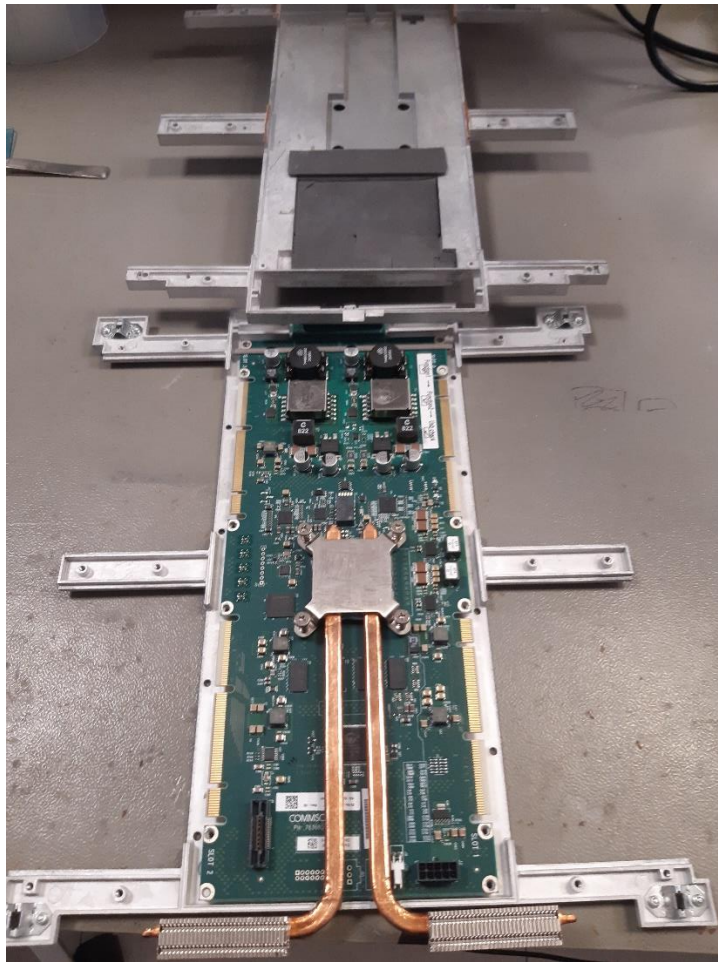
7845389-0034 - 7845389-1034



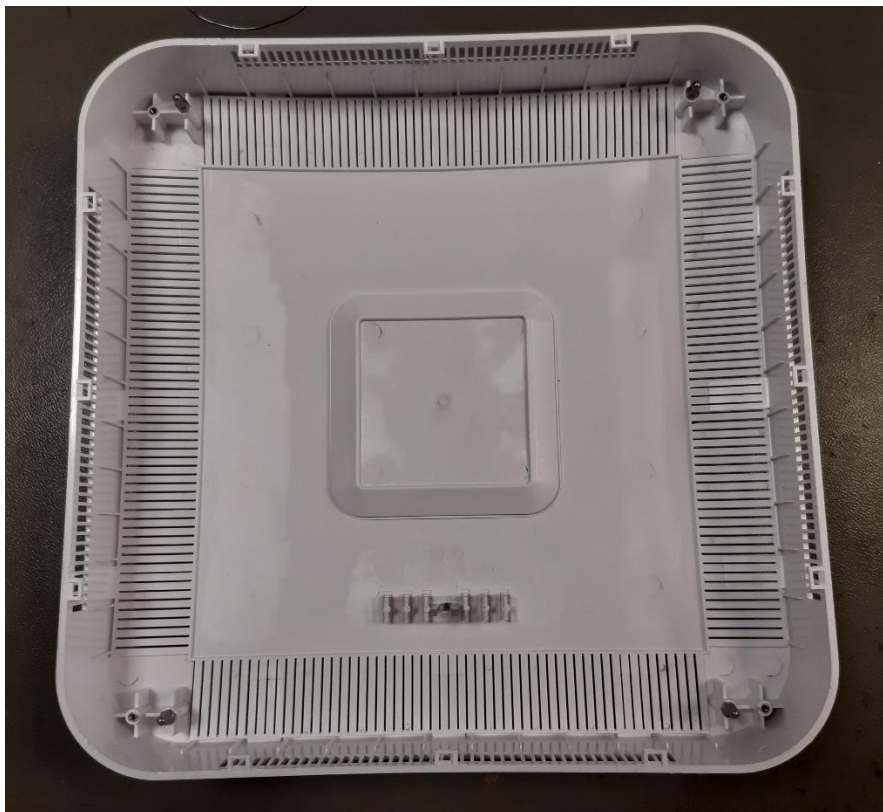
UAP 2 without upper cover



UAP 2 without upper cover and ventilation cover

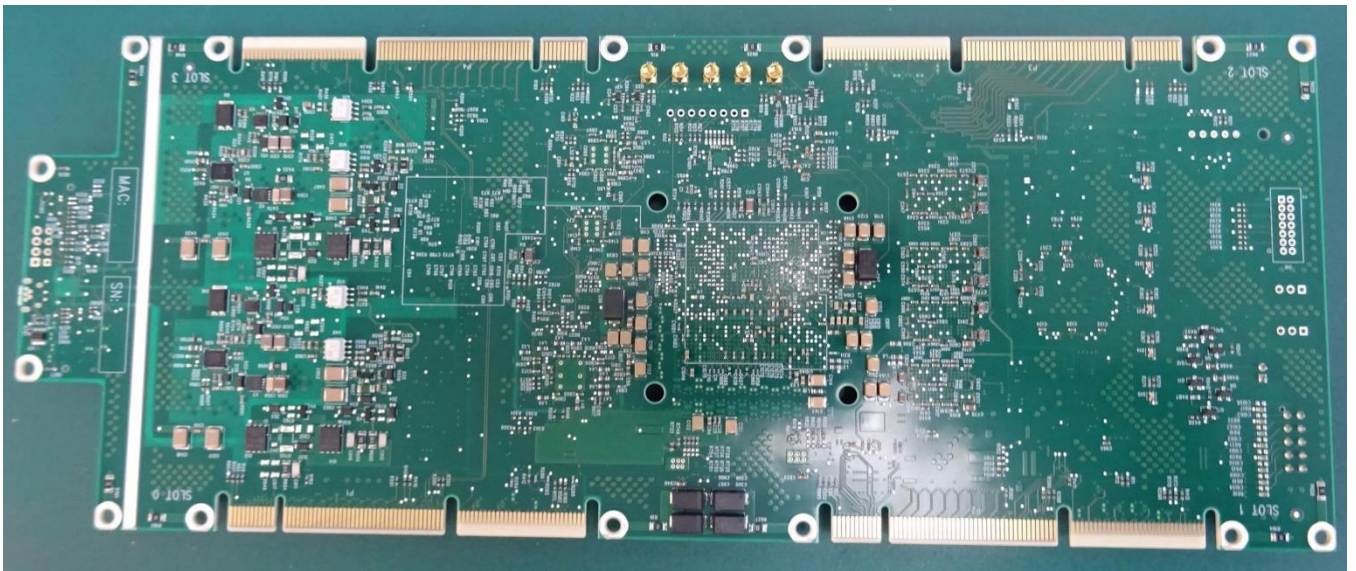


Base Band Card - 7846529-04 - without cover

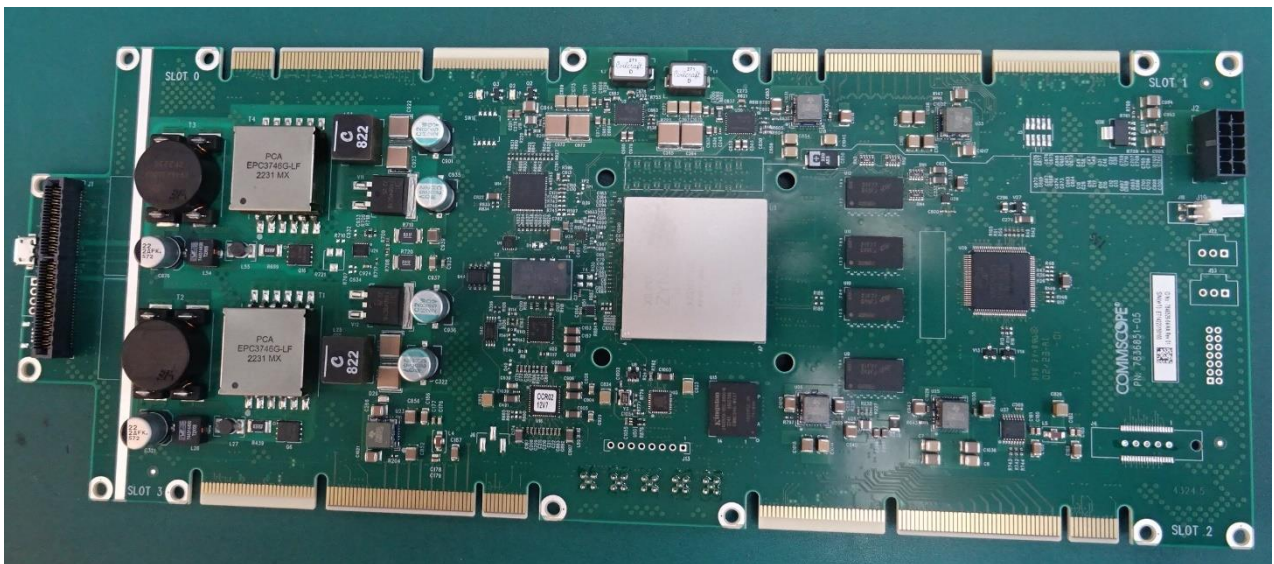


Upper cover





BBC P5 - 7846529-04 – TOP View

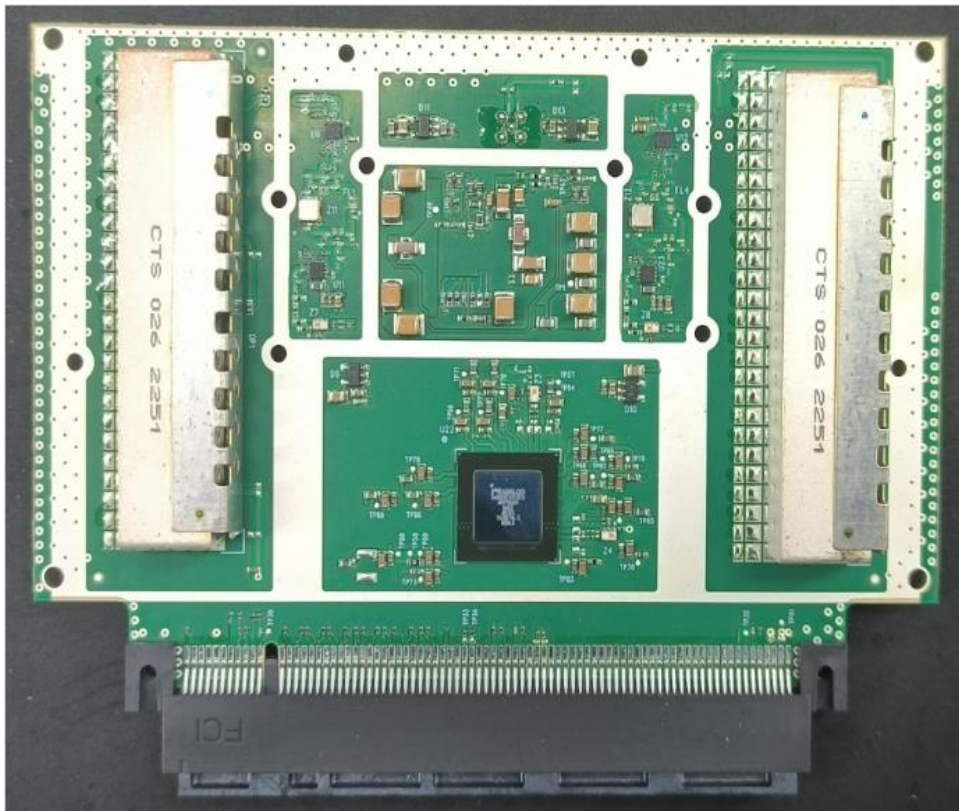


BBC P5 - 7846529-04 – BOTTOM View

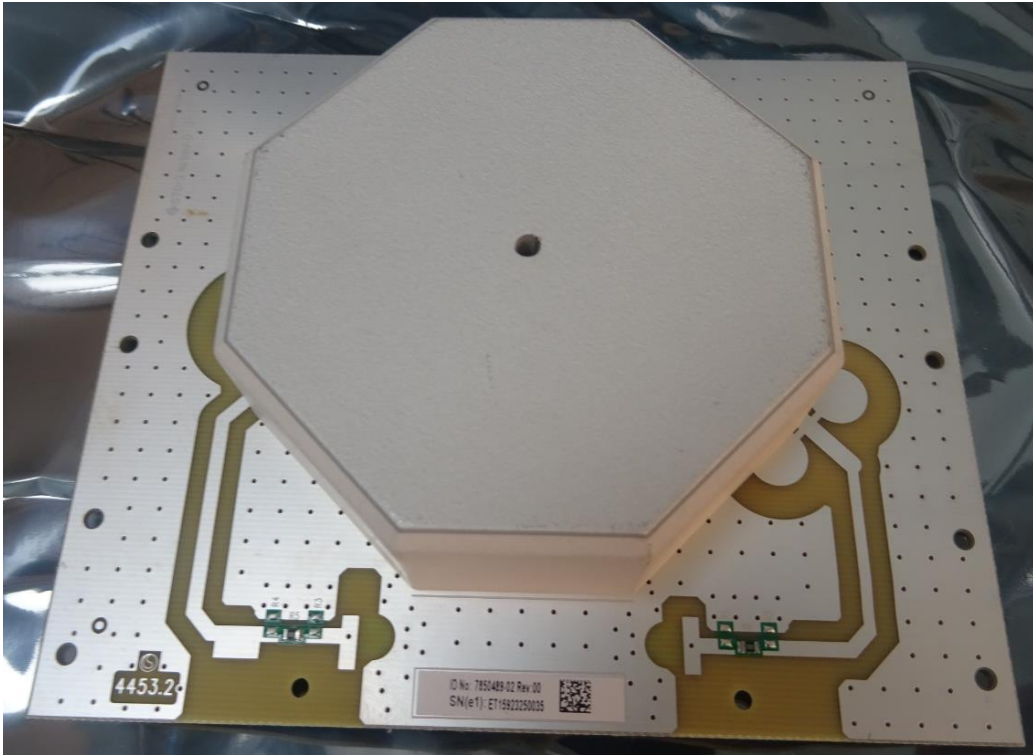




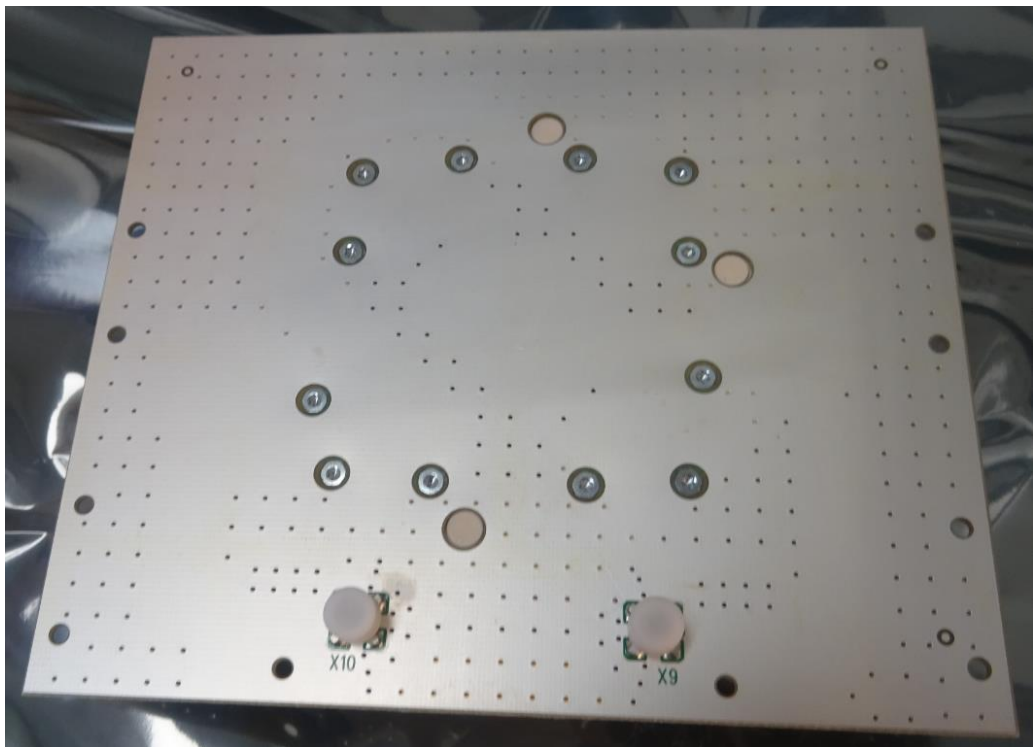
RM 80-85 – 7843219-03 - TOP View



RM 80-85 – 7843219-03 - BOTTOM View

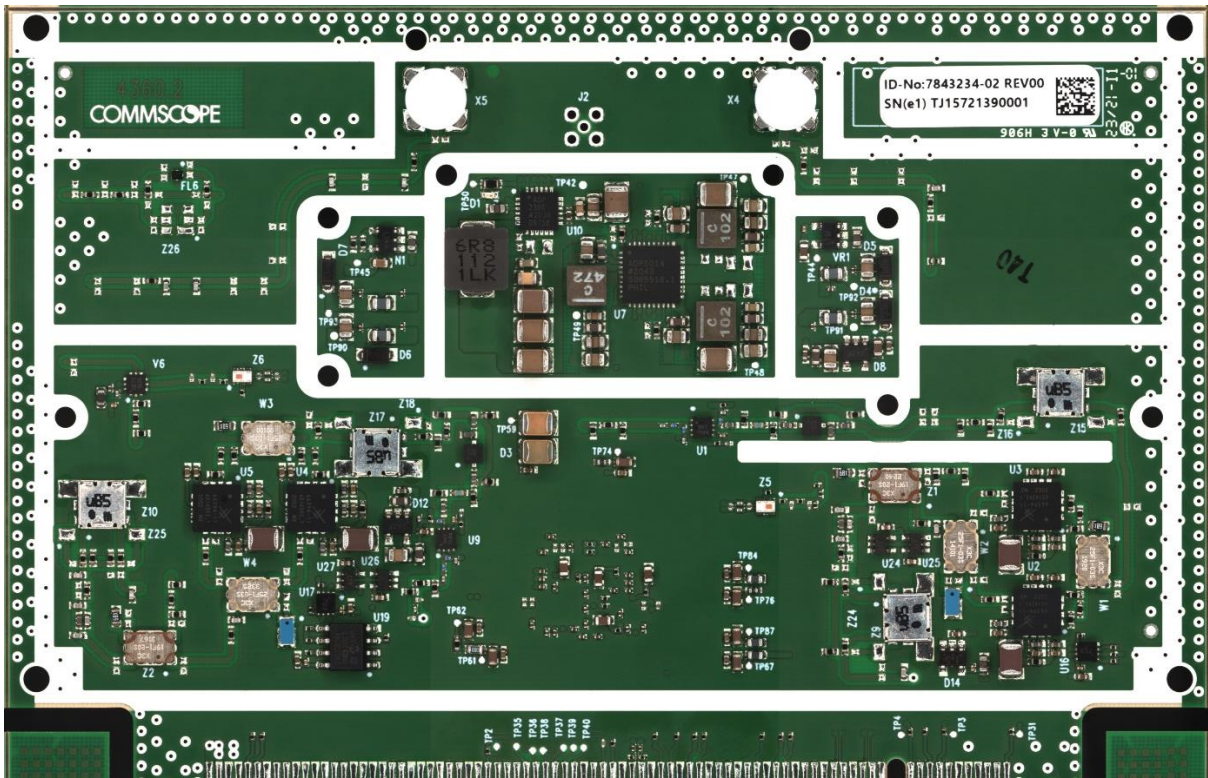


Antenna 80-85 – 7850489-02 – TOP View

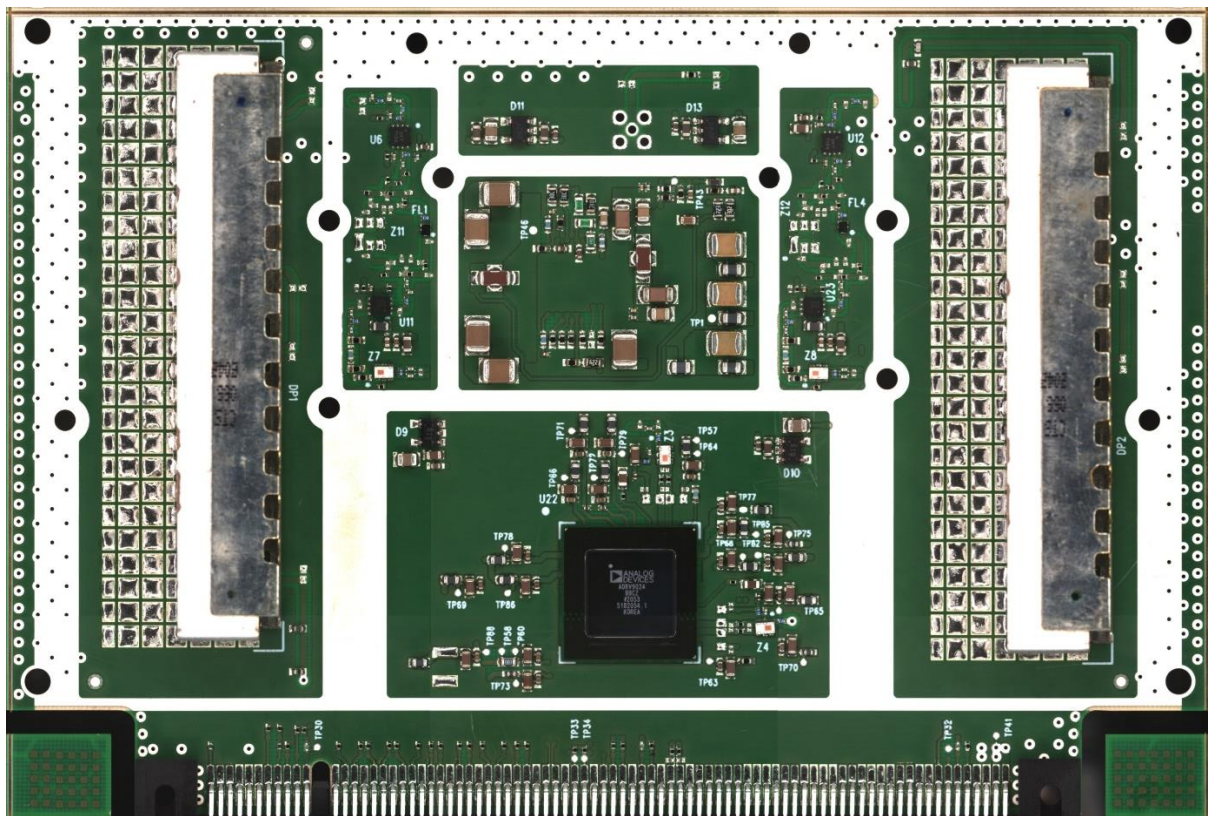


Antenna 80-85 – 7850489-02 – BOTTOM View

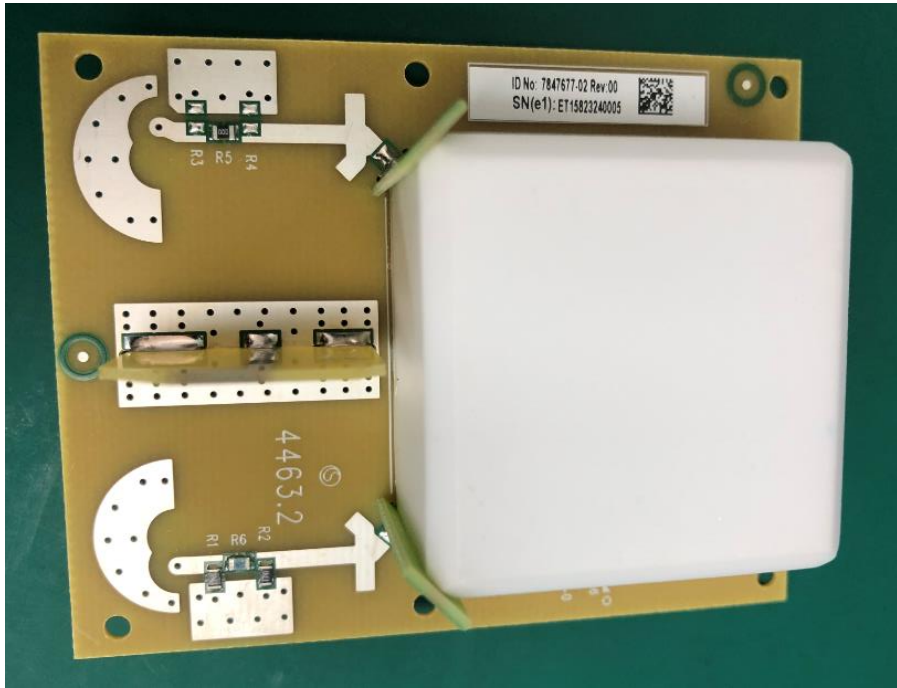




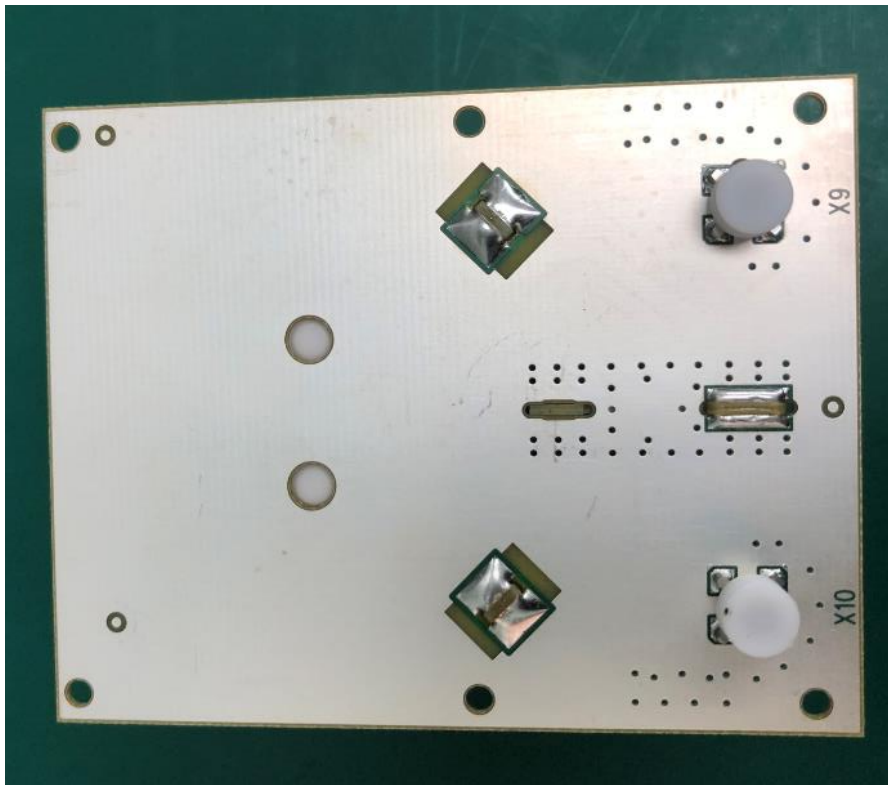
RM 17E – 7843234-02 - TOP View



RM 17E – 7843234-02 - BOTTOM View

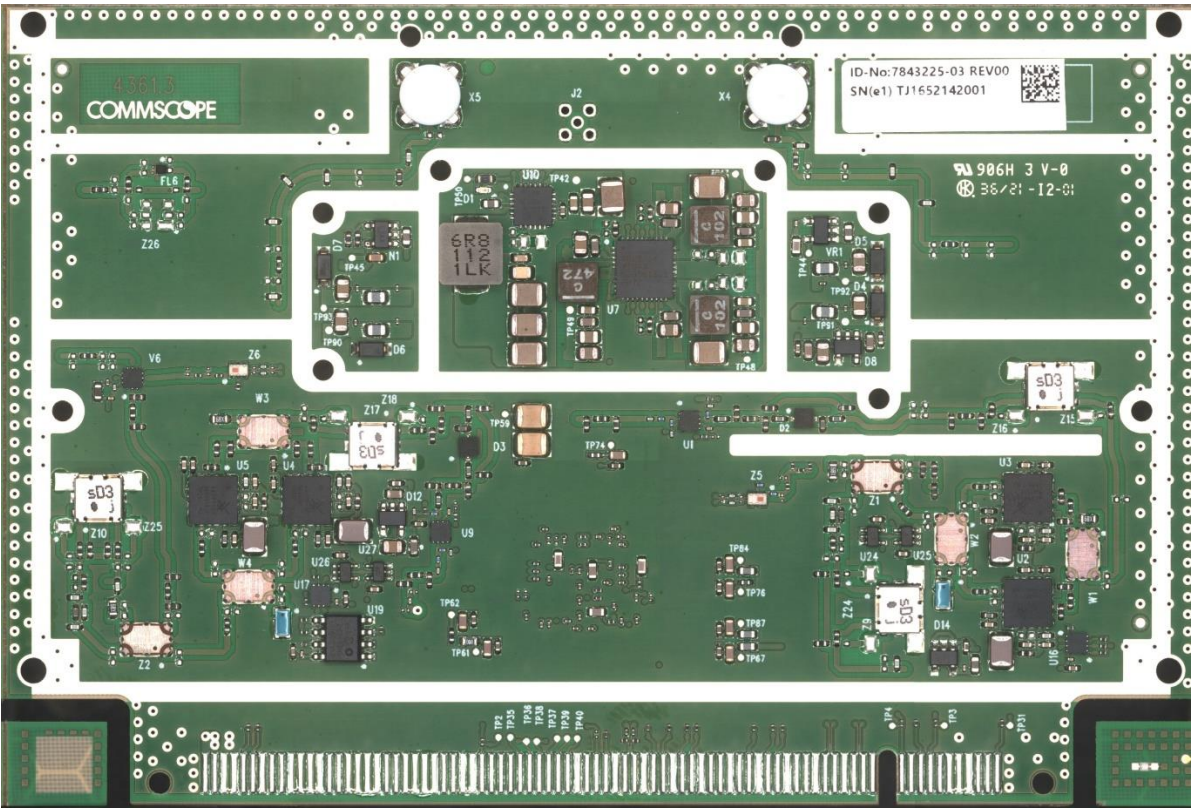


Antenna 17E – 7847677-02 – TOP View

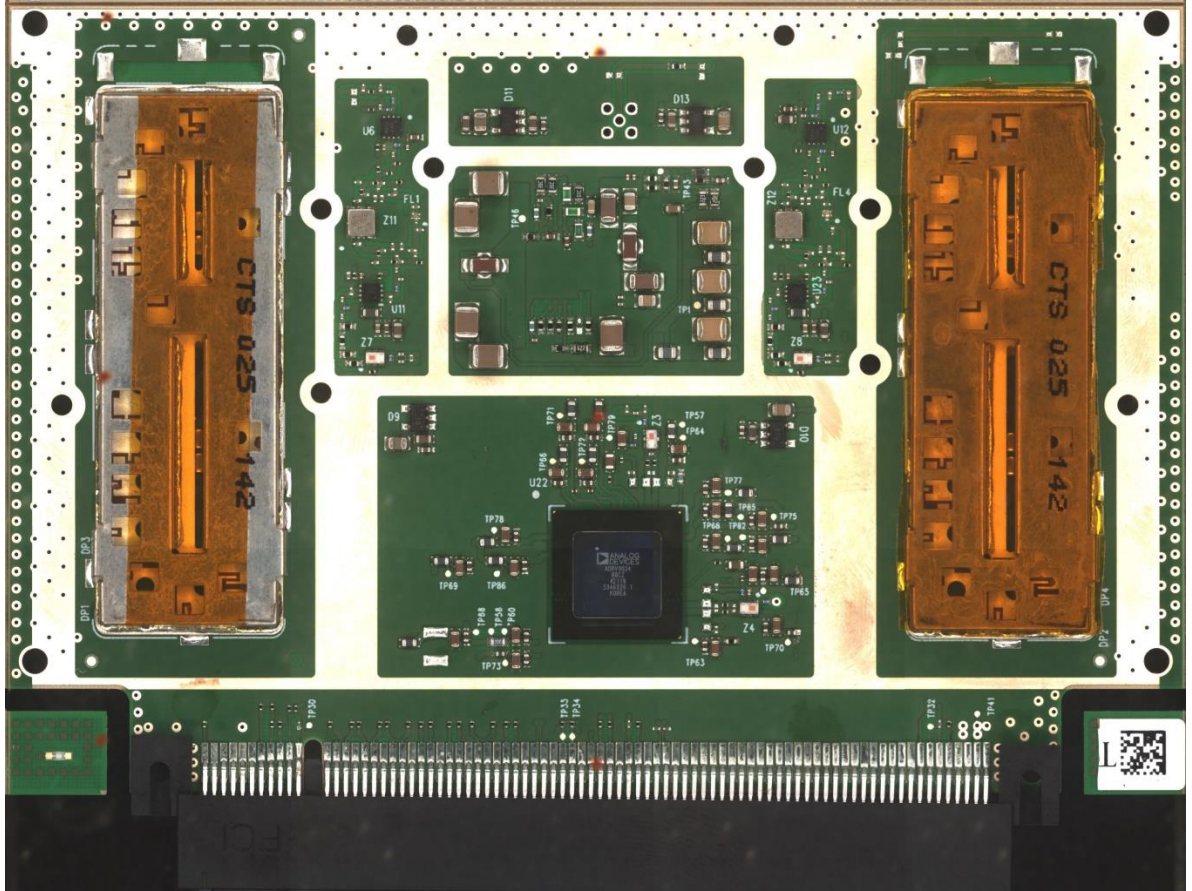


Antenna 17E – 7847677-02 – BOTTOM View





RM 19 – 7843225-03 - TOP View

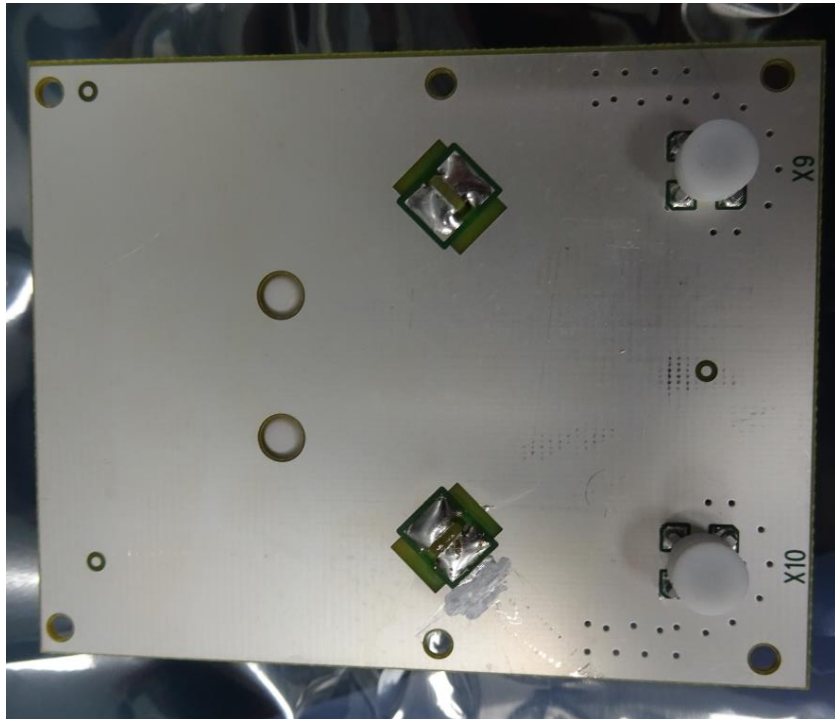


RM 19 – 7843225-03 – BOTTOM View

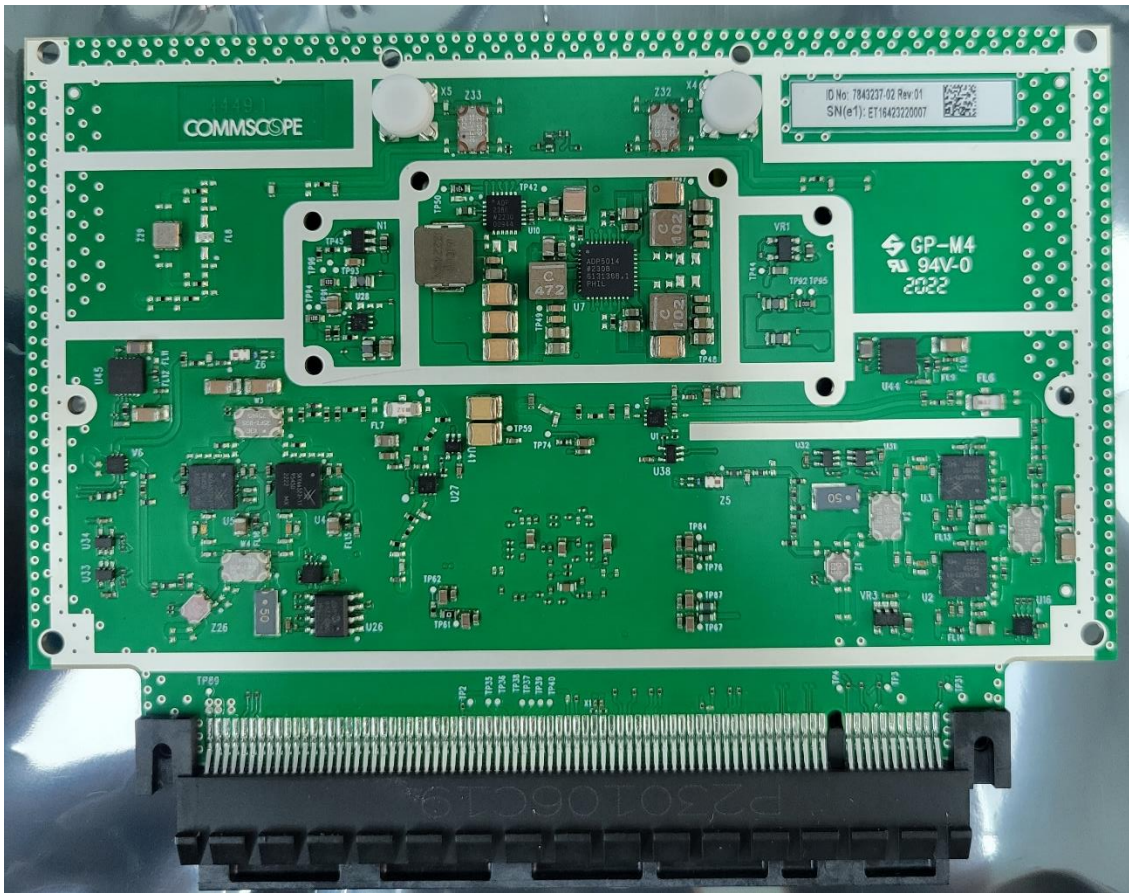




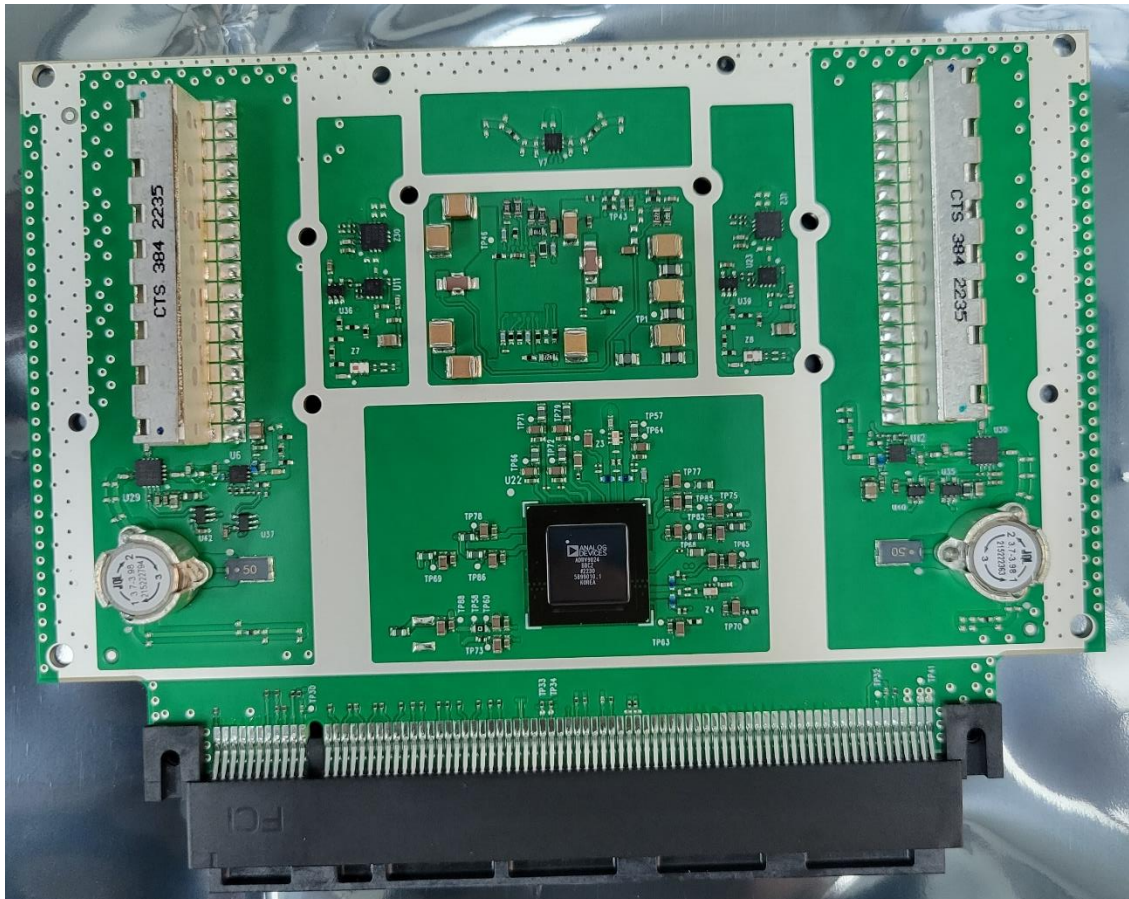
Antenna 19 – 7847674-00 – TOP View



Antenna 19 – 7847674-00 – BOTTOM View

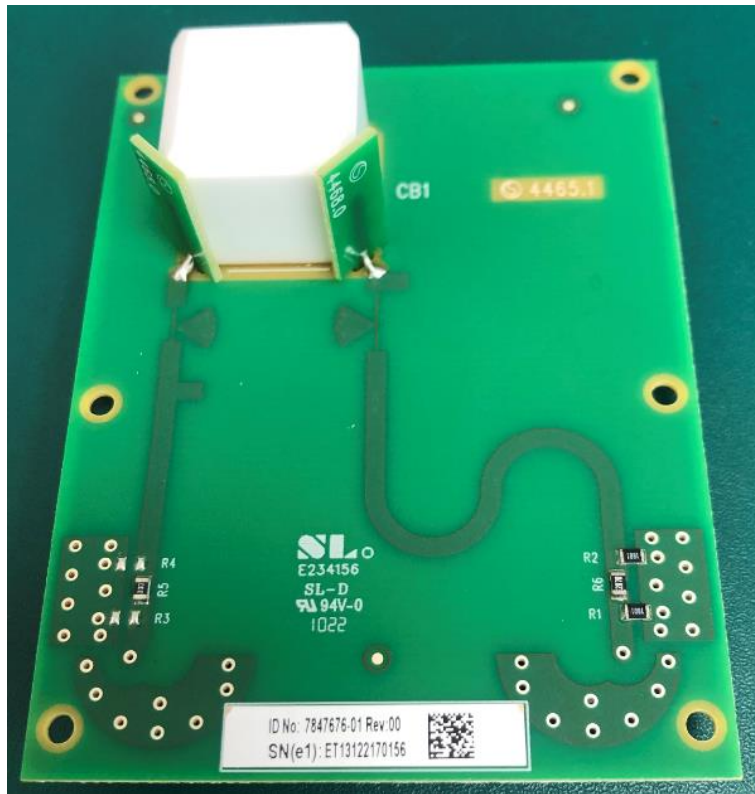


RM 37T – 7855527-xx - TOP View

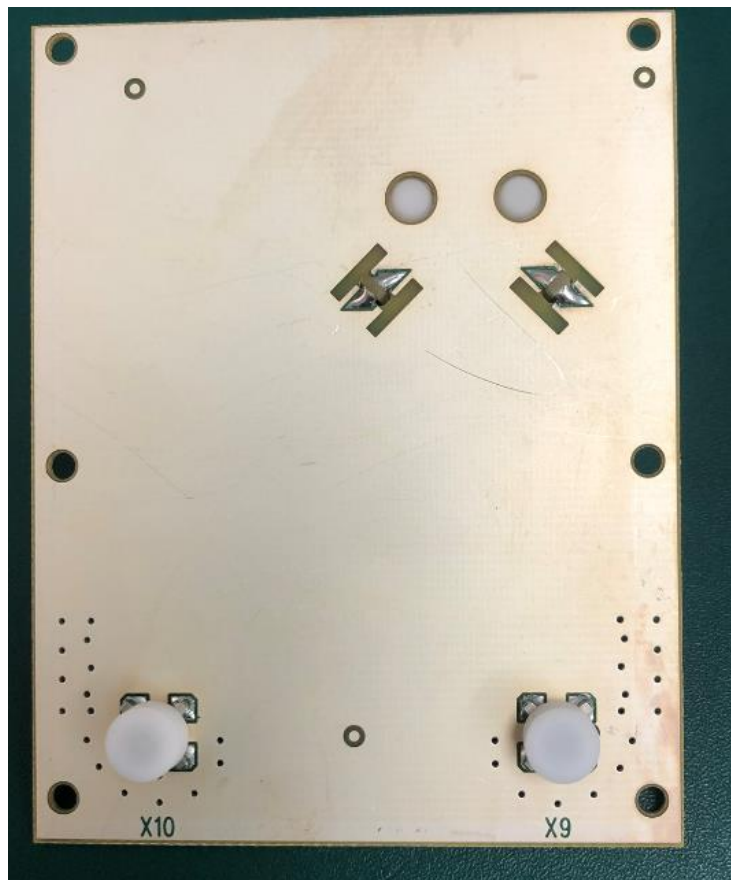


RM 37T – 7855527-xx – BOTTOM View





Antenna 37T – 7847676-01 – TOP View



Antenna 37T – 7847676-01 – BOTTOM View



DPEM 1 - 7843349-02 – Data & Power Entry Copper – TOP View



DPEM 1 - 7843349-02 – Data & Power Entry Copper – BOTTOM View



DPEM 2 - 7843351-02 – Data & Power Entry Fiber – TOP View



DPEM 2 - 7843351-02 – Data & Power Entry Fiber – BOTTOM View