



## EMC Photo Report 21-0080

Designation: RF-Donor Card HB  
Manufacturer: CommScope  
Serial No(s): 4658020004



BNetzA-CAB-19/21-20



Deutsche  
Akkreditierungsstelle  
D-PL-12024-06-04

The test results relate only to the tested item. The sample has been provided by the client.  
Without the written consent of Bureau Veritas Consumer Products Services Germany GmbH excerpts of this report shall not be reproduced.

Bureau Veritas  
Consumer Products Services Germany GmbH  
[www.bureauveritas.de/cps](http://www.bureauveritas.de/cps)  
Phone: +49 (0)40 – 740 41 – 0

Schwerin  
Wilhelm-Hennemann-Str. 8, 19061 Schwerin  
[cps-schwerin@de.bureauveritas.com](mailto:cps-schwerin@de.bureauveritas.com)

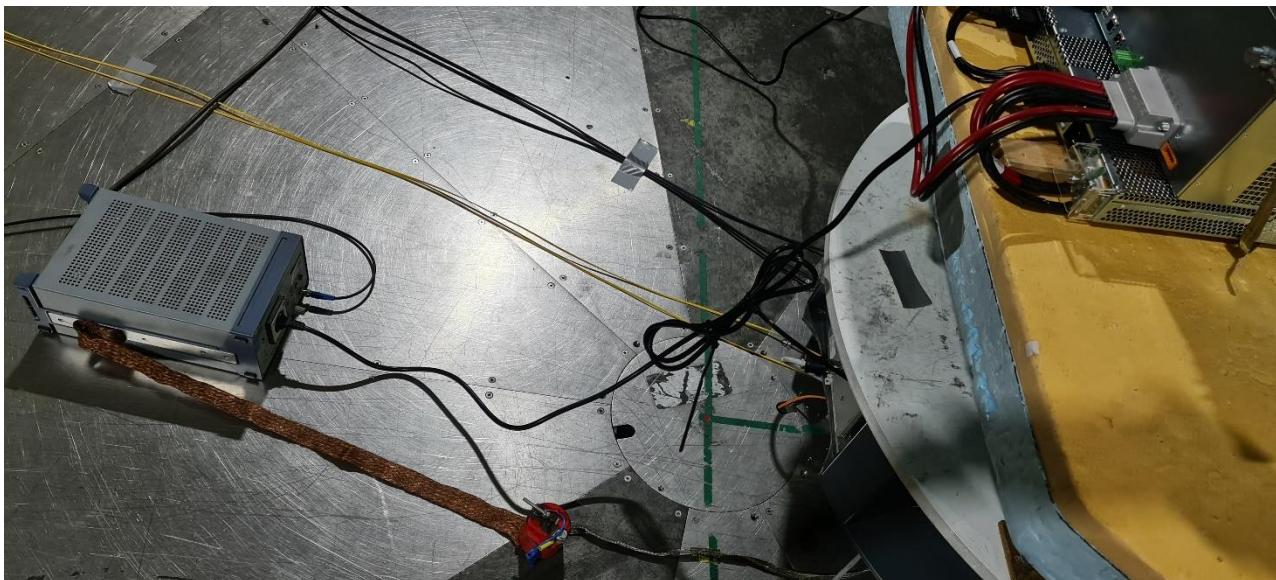
Tuerkheim  
Businesspark A96, 86842 Tuerkheim  
[cps-tuerkheim@de.bureauveritas.com](mailto:cps-tuerkheim@de.bureauveritas.com)

Managing Director: Sebastian Doose, Stefan Kischka  
Reg.No.: Schwerin HRB 3564

Hamburg  
Oehleckerring 40, 22419 Hamburg  
[cps-hamburg@de.bureauveritas.com](mailto:cps-hamburg@de.bureauveritas.com)

Nuremberg  
Thurn-und-Taxis-Str. 18, 90411 Nuremberg  
[cps-nuernberg@de.bureauveritas.com](mailto:cps-nuernberg@de.bureauveritas.com)

## 1 Photographs of Test Setup

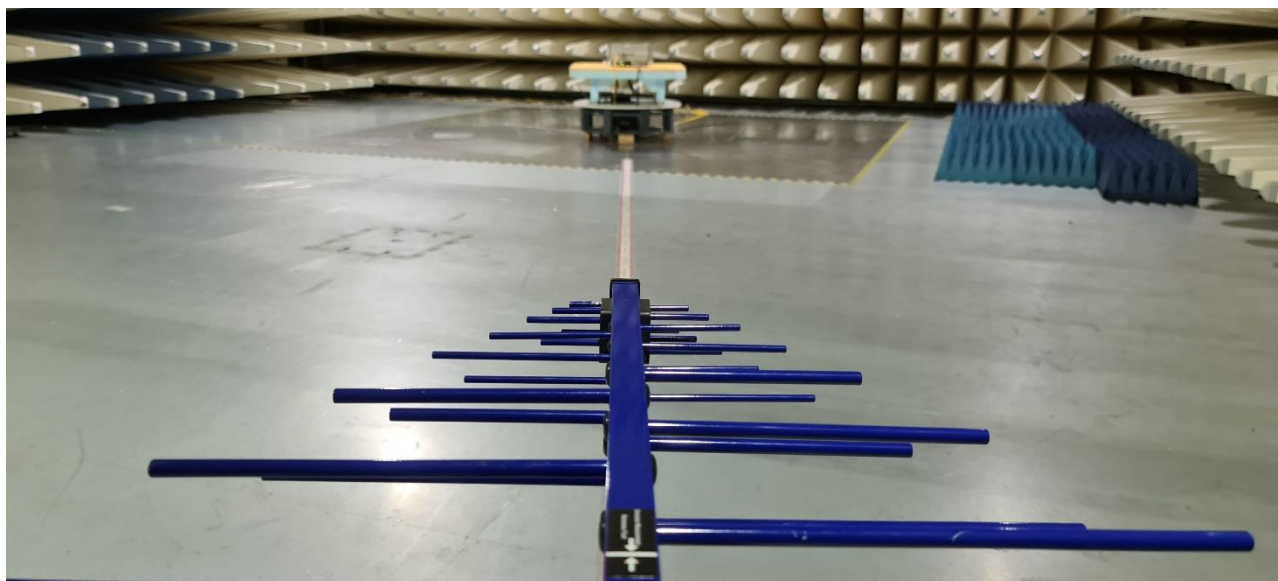


Photograph 1: Setup of conducted emissions measurement at AC mains port



Photograph 2: Photograph of DUT's grounding

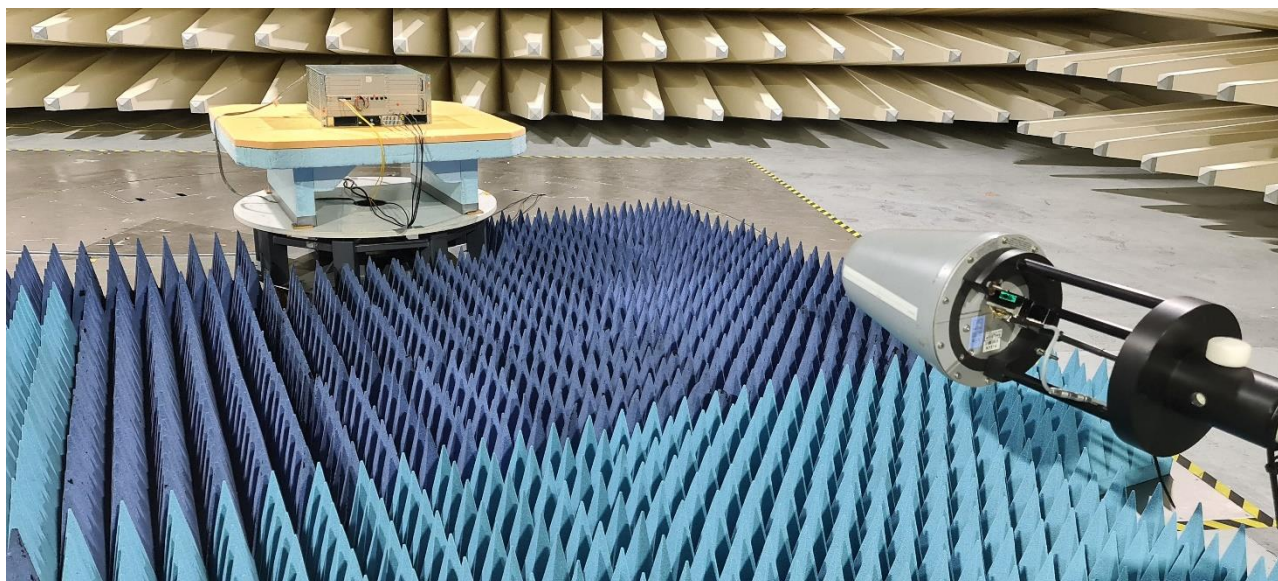




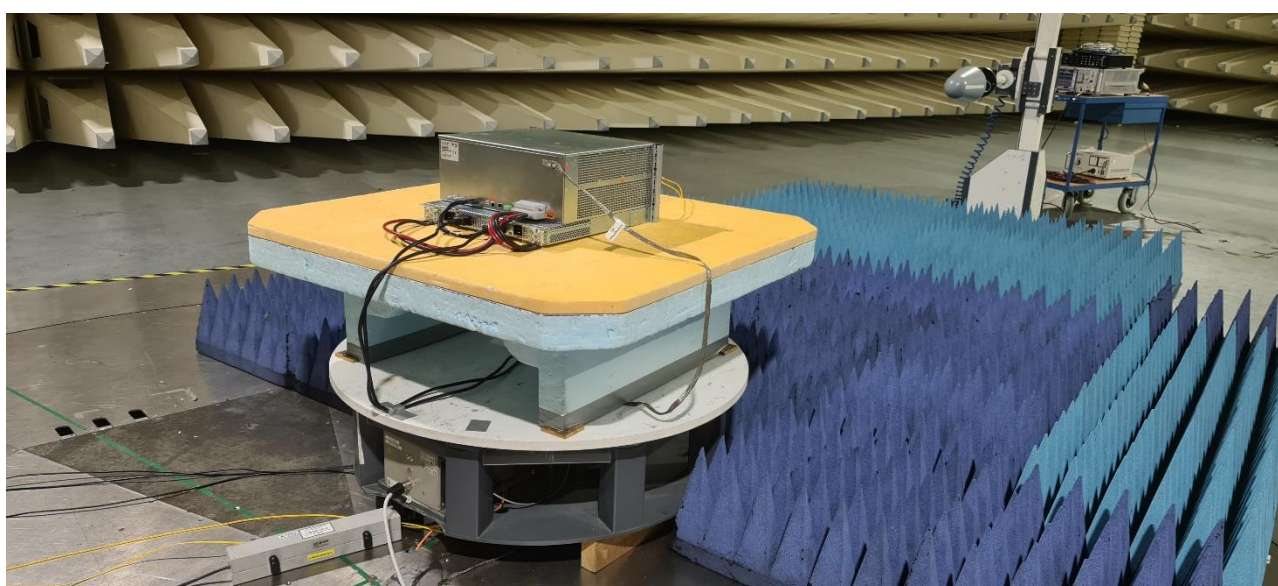
Photograph 3: Setup of radiated emissions measurement in the frequency range 30 – 1000 MHz



Photograph 4: Setup of radiated emissions measurement in the frequency range 30 – 1000 MHz

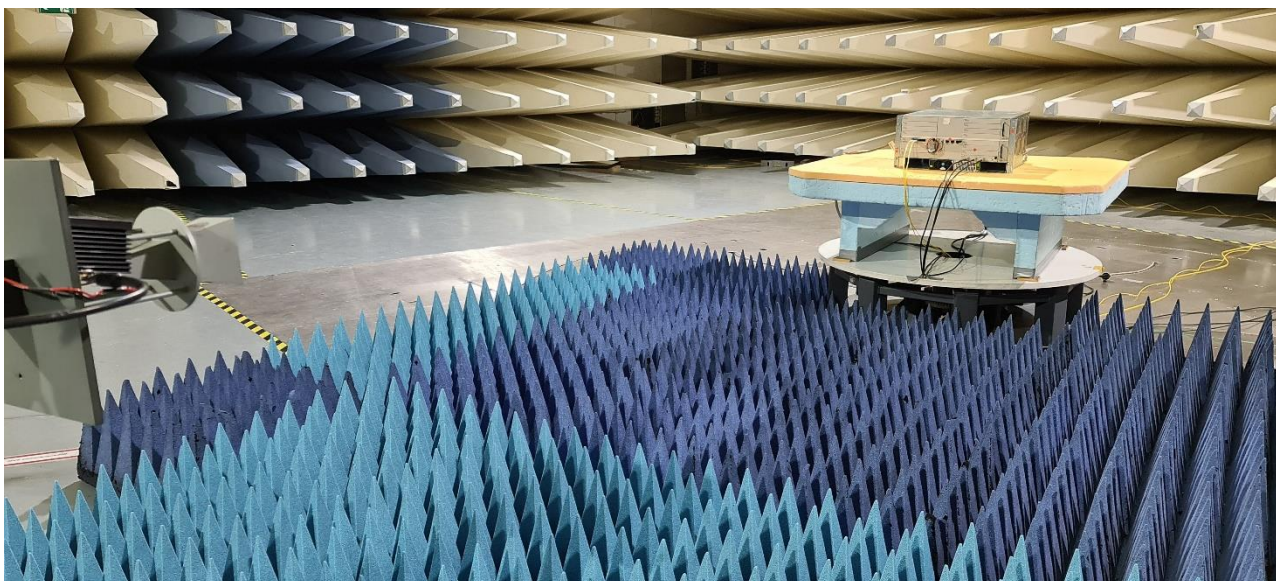


Photograph 5: Setup of radiated emissions measurement in the frequency range above 1 GHz

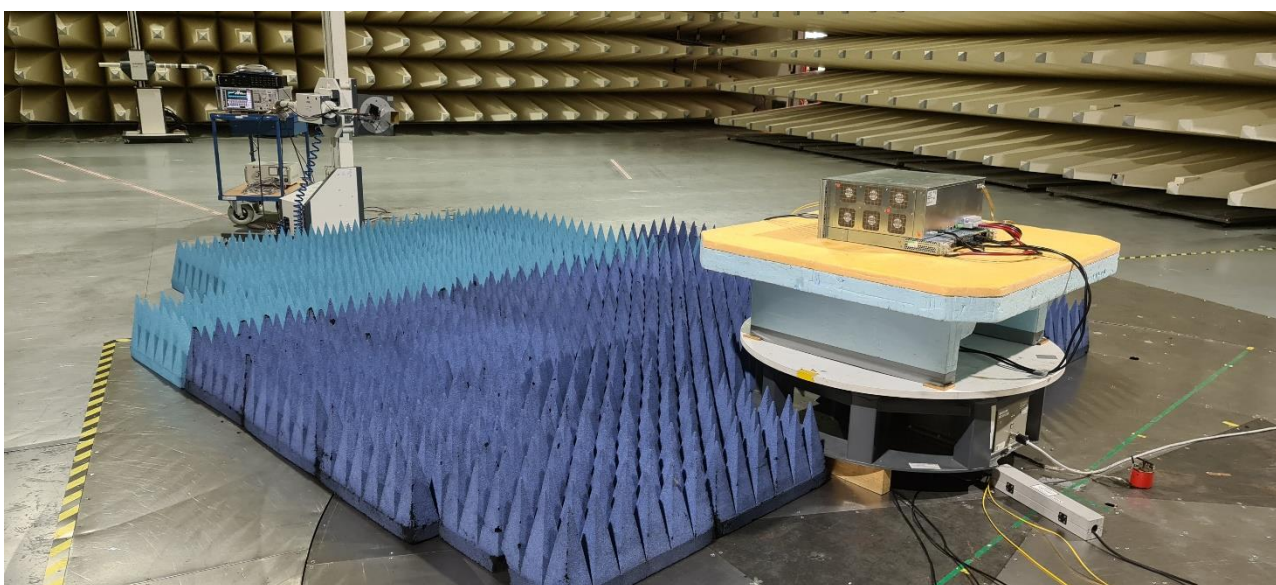


Photograph 6: Setup of radiated emissions measurement in the frequency range above 1 GHz





Photograph 7: Setup of radiated emissions measurement in the frequency range above 1 GHz



Photograph 8: Setup of radiated emissions measurement in the frequency range above 1 GHz



## 2 Photographs of ancillary equipment

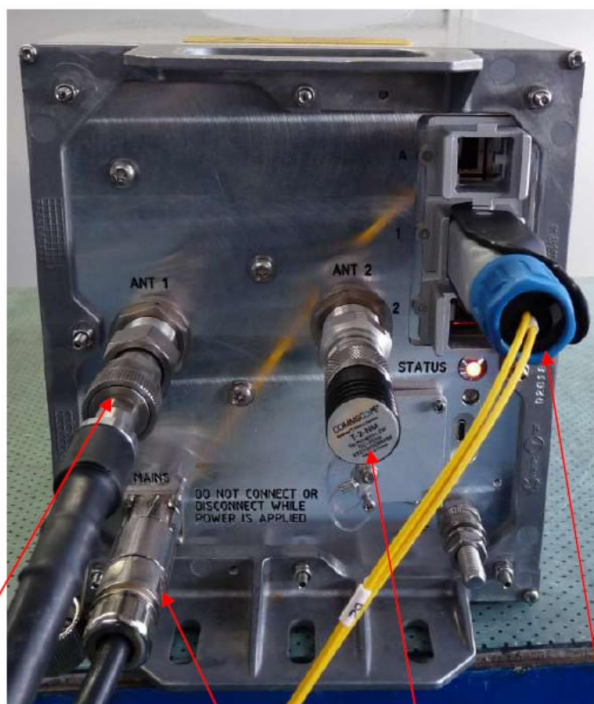


Photograph 9: Photograph of ION-E WCS-4 Subrack frontside



Photograph 10: Photograph of ION-E WCS-4 Subrack backside

**EMC Photo Report No.: 21-0080**  
EMC tests on Andrew RF-Donor Card HB



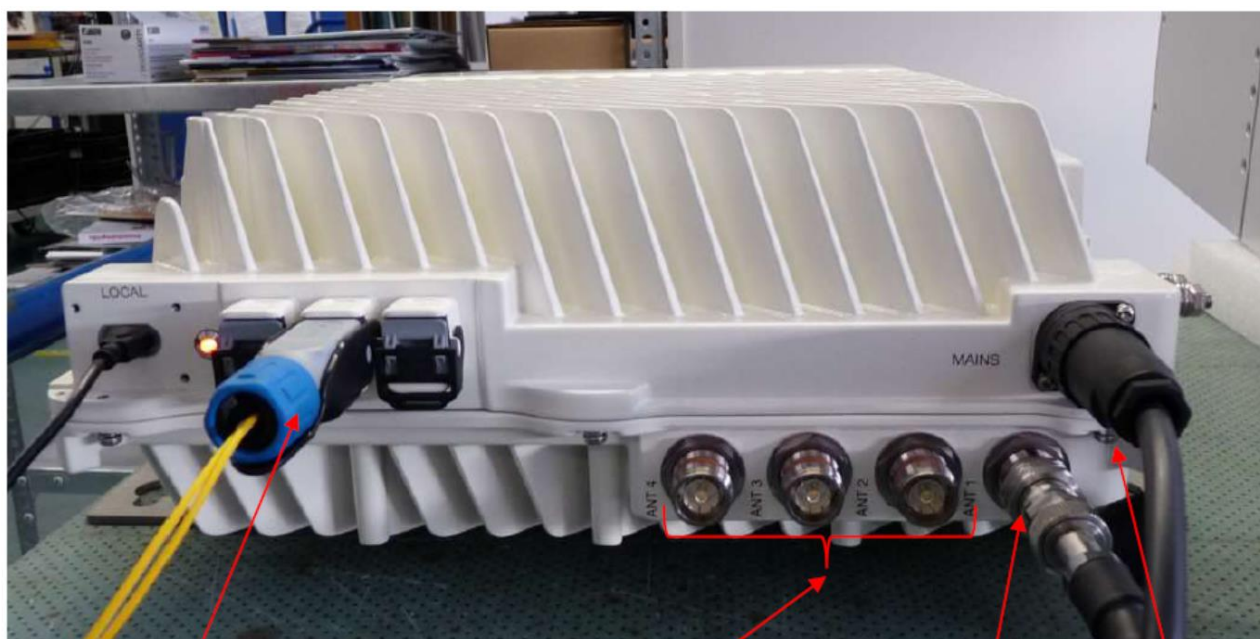
Ant. Port 1: 2355 / 2593 MHz

Port 2: n.a.

AC IN (230V)

Fiber cable (to OPT Card 4.2)

Photograph 11: Photograph of CAP H 23/23/25T/25/T



Port 2-4: n.a.

Port 1: 3600 MHz

Fiber cable (to OPT Card 4.1)

AC IN (230V)

Photograph 12: Photograph of CAP 35/35/35/35



\*\*\*\*\* End of test report \*\*\*\*\*