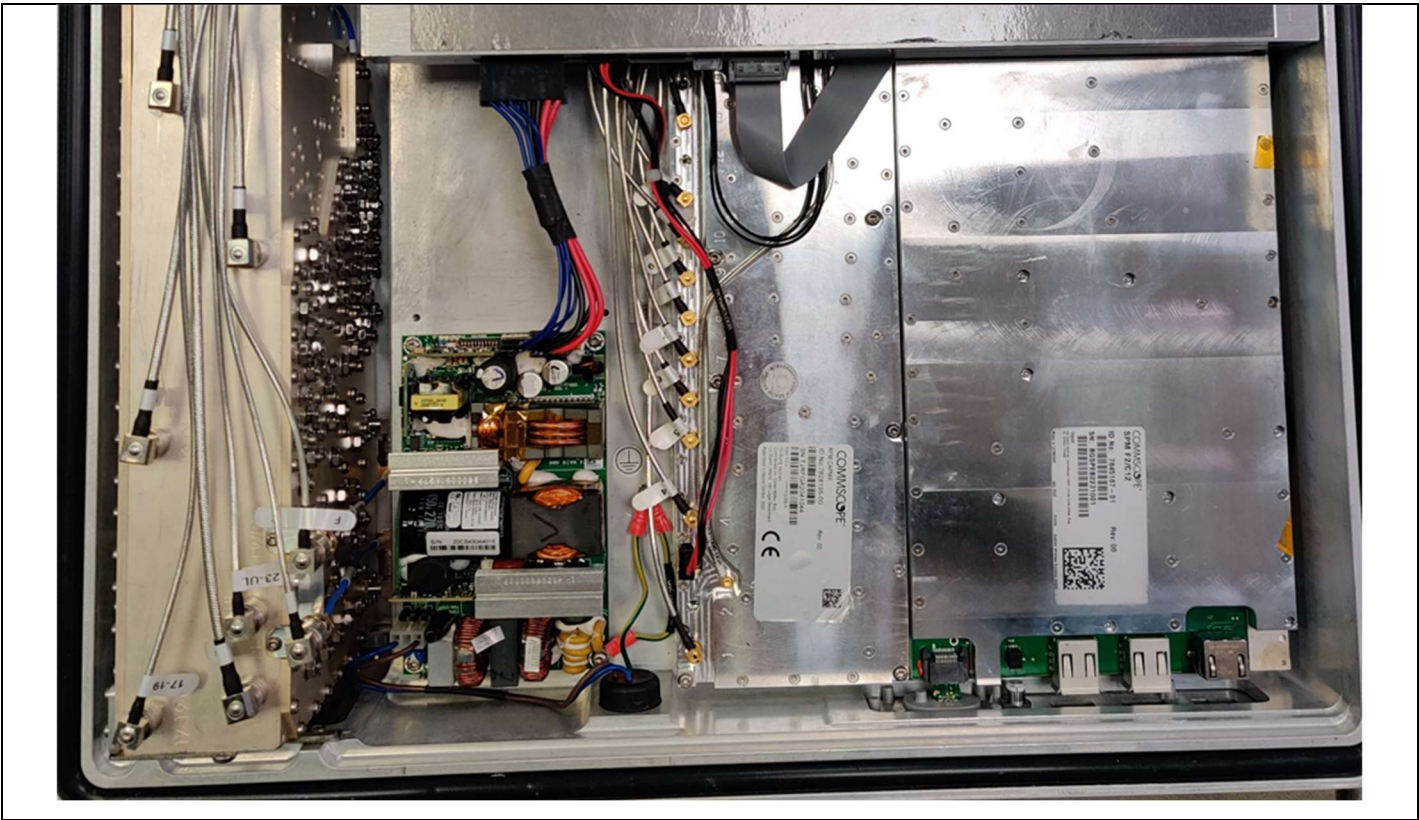


# Internal Photos

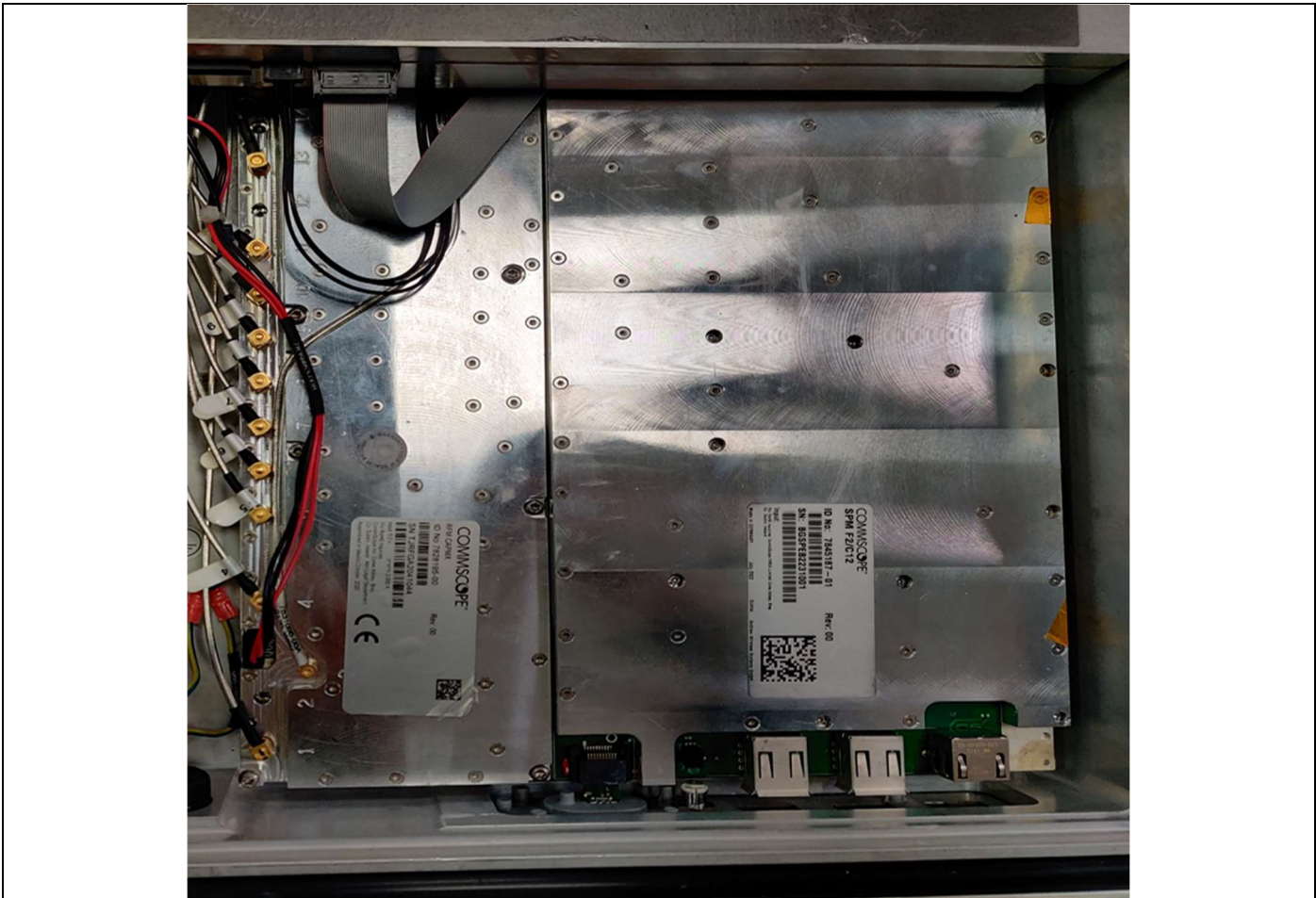
## CAP MX 7830127-xxxx





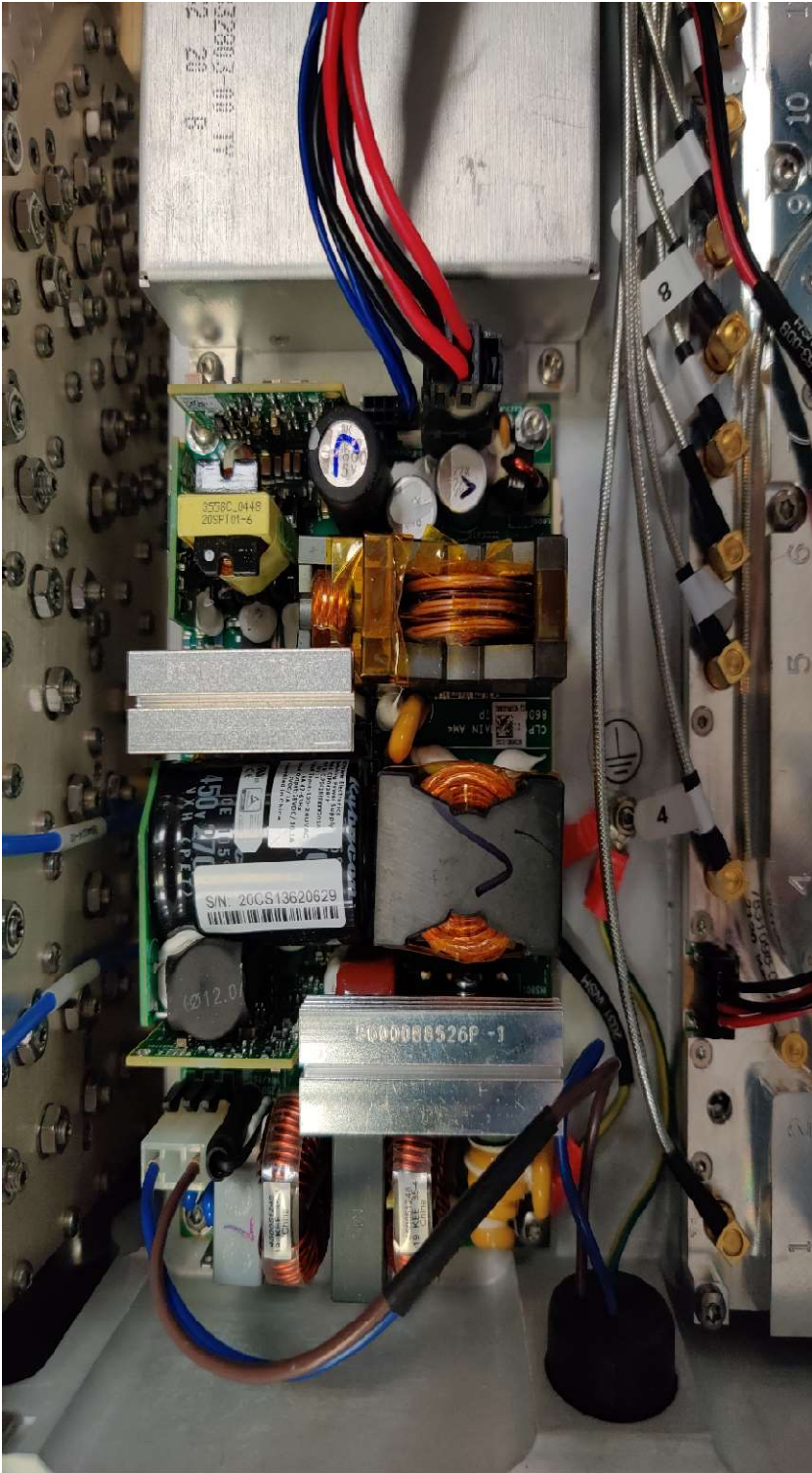


RFM CAPMX (7828195-00)  
Radio Frequency Module

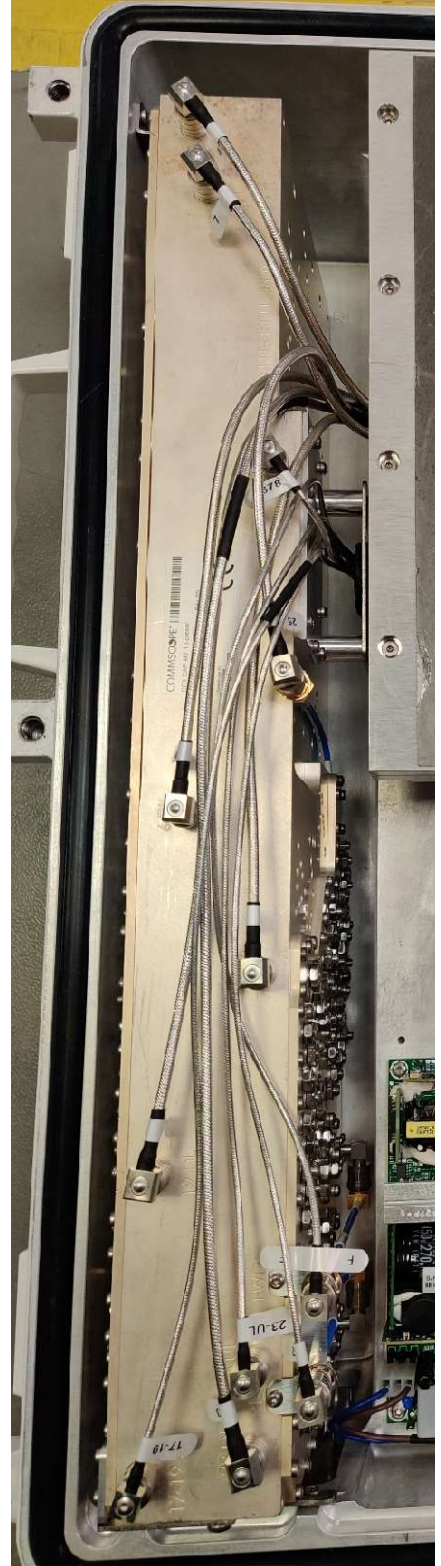


SPM, CAPMX (7845187-01)  
Signal Processing Module



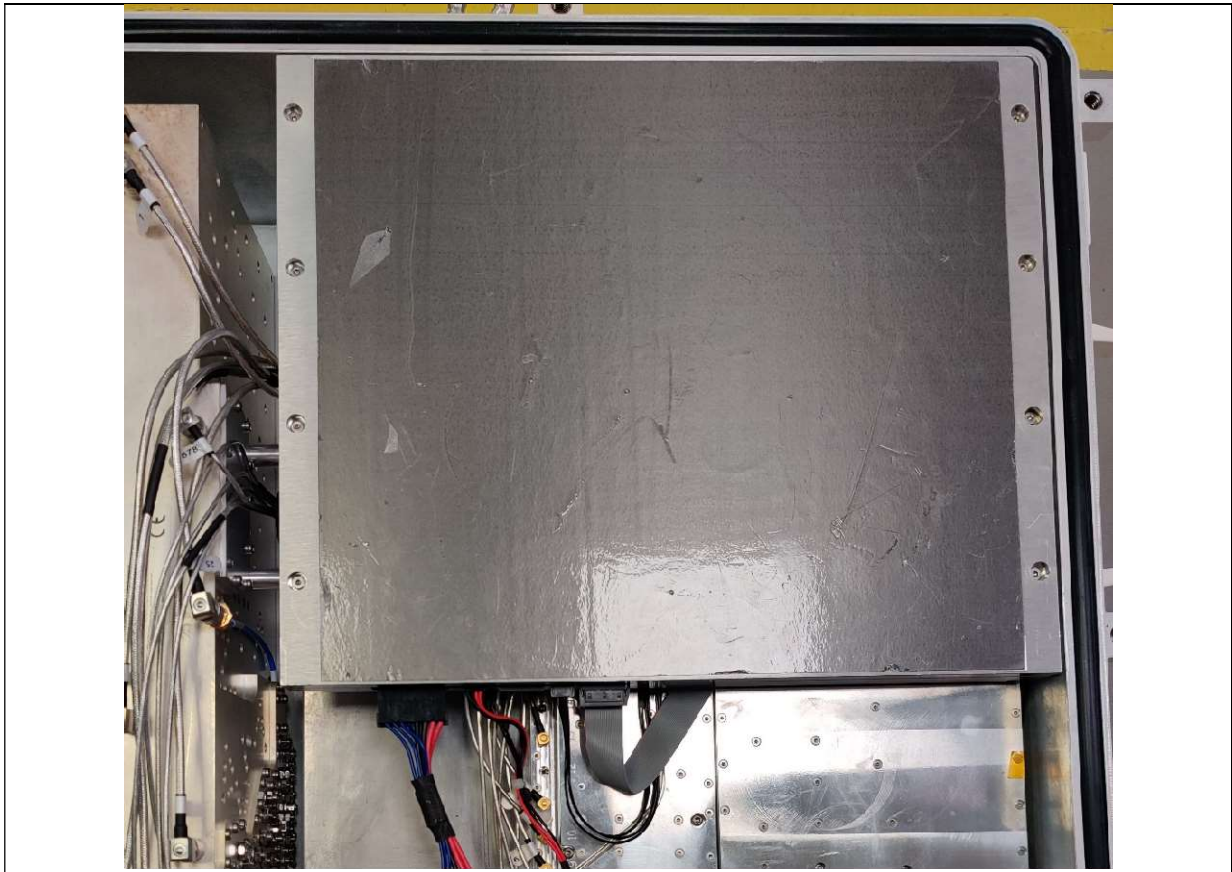


POWER SUPPLY UNIT (7836454)

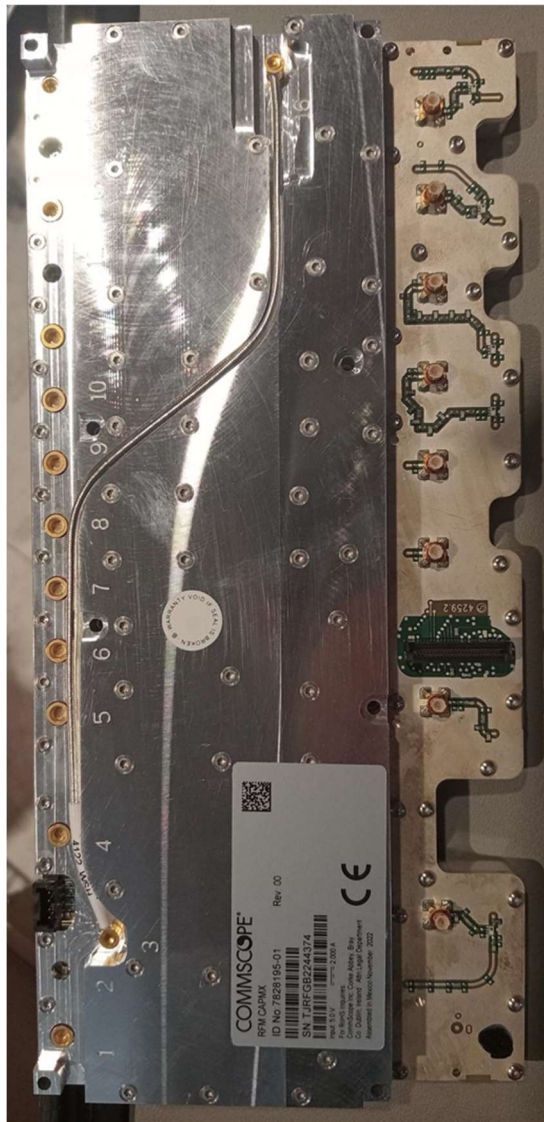
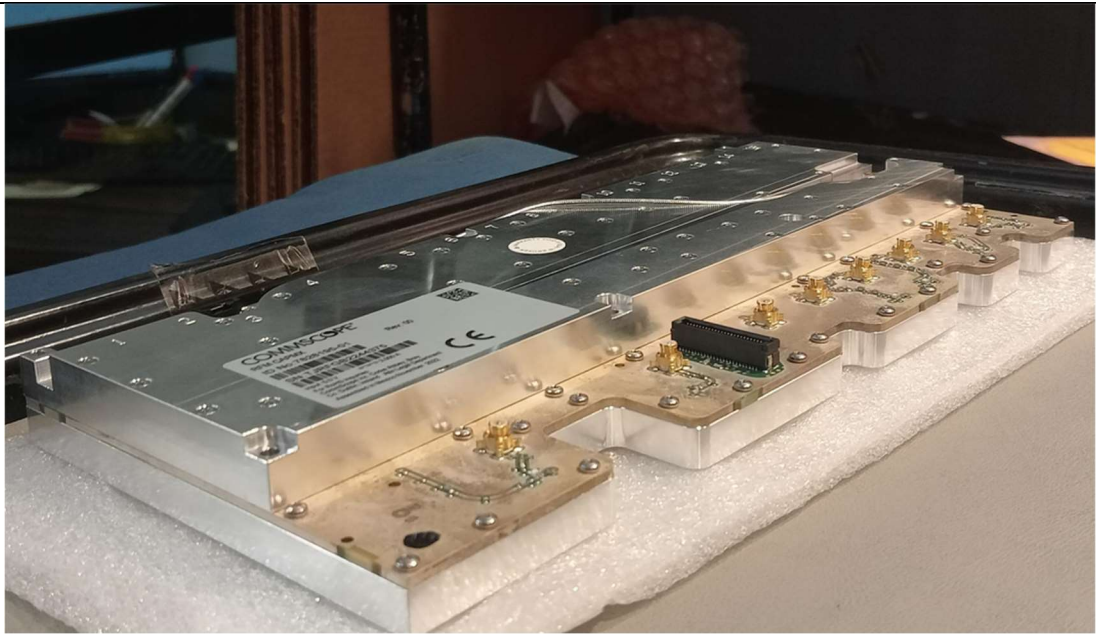


DPX CAP-M7 13-plexer (7824826-00)



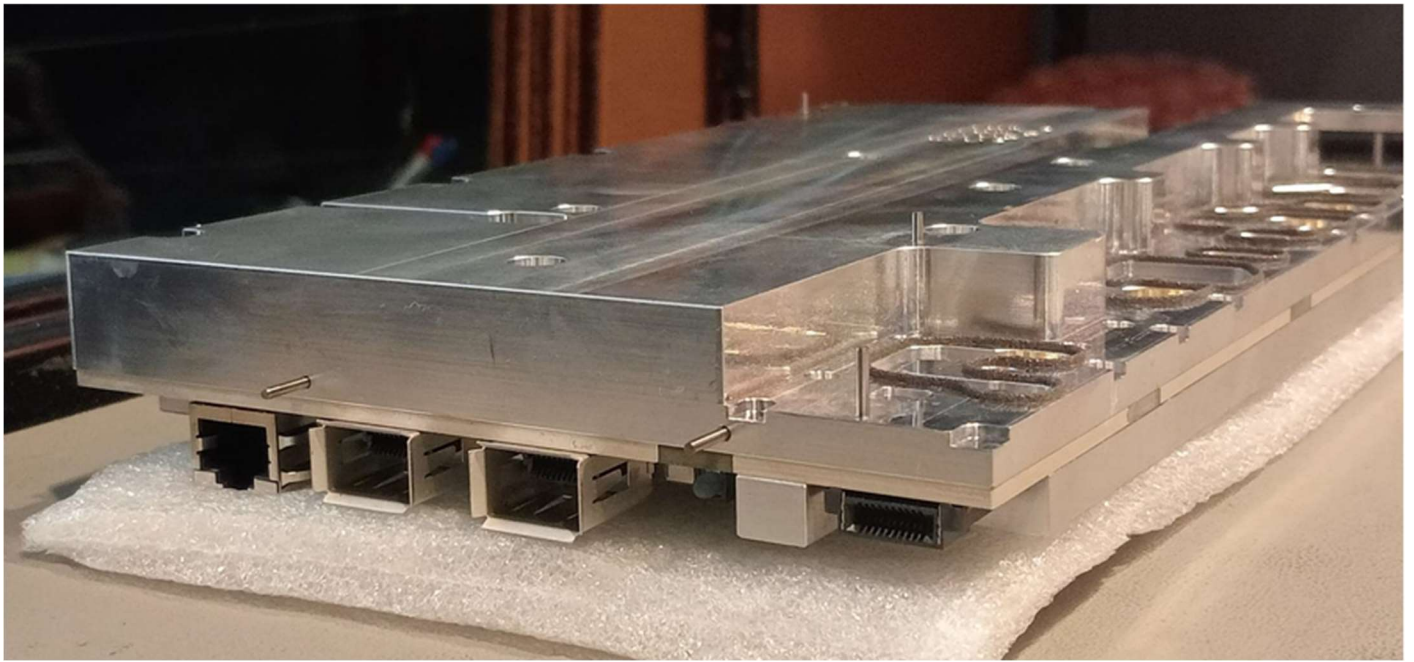


PA Module, CAP MX (7833429-03)  
Power Amplifier Module



RFM, CAP MX (7828195-01)  
Radio Frequency Module



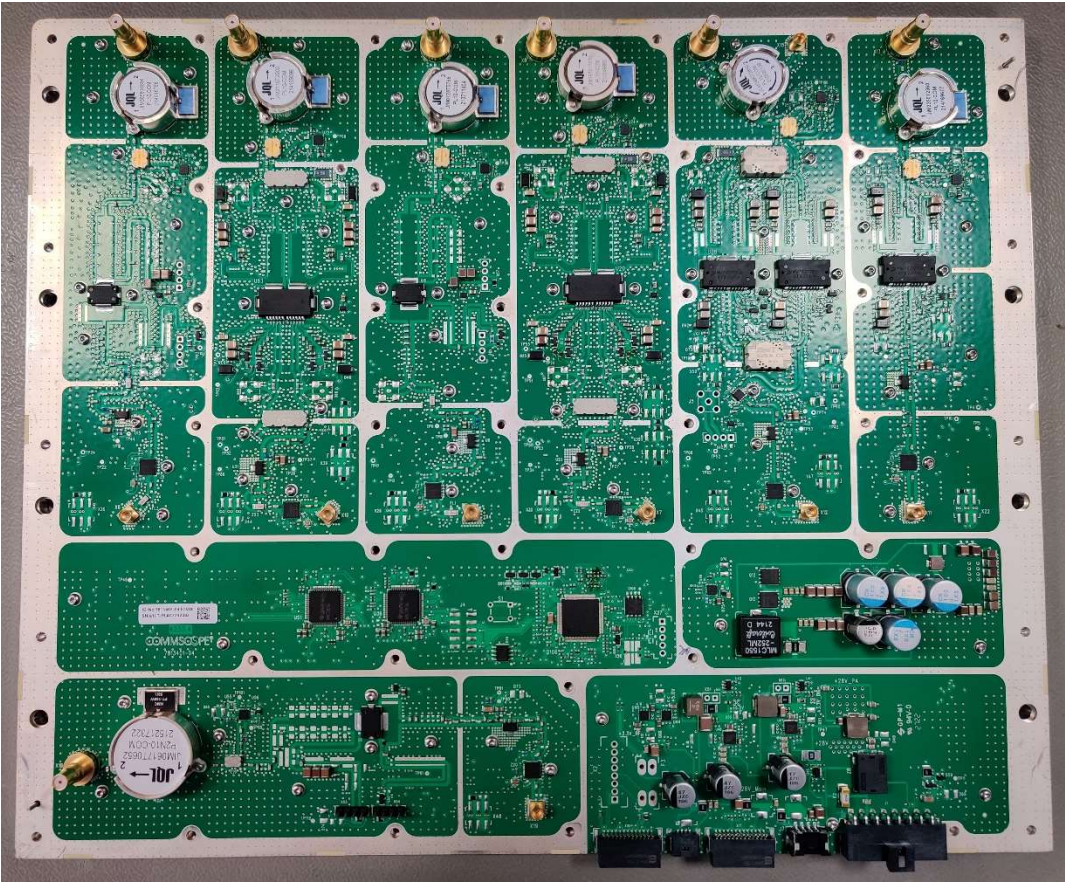


SPM, CAPMX (7845187-01)  
Signal Processing Module



**PA Module, CAP MX (7833429-03)**

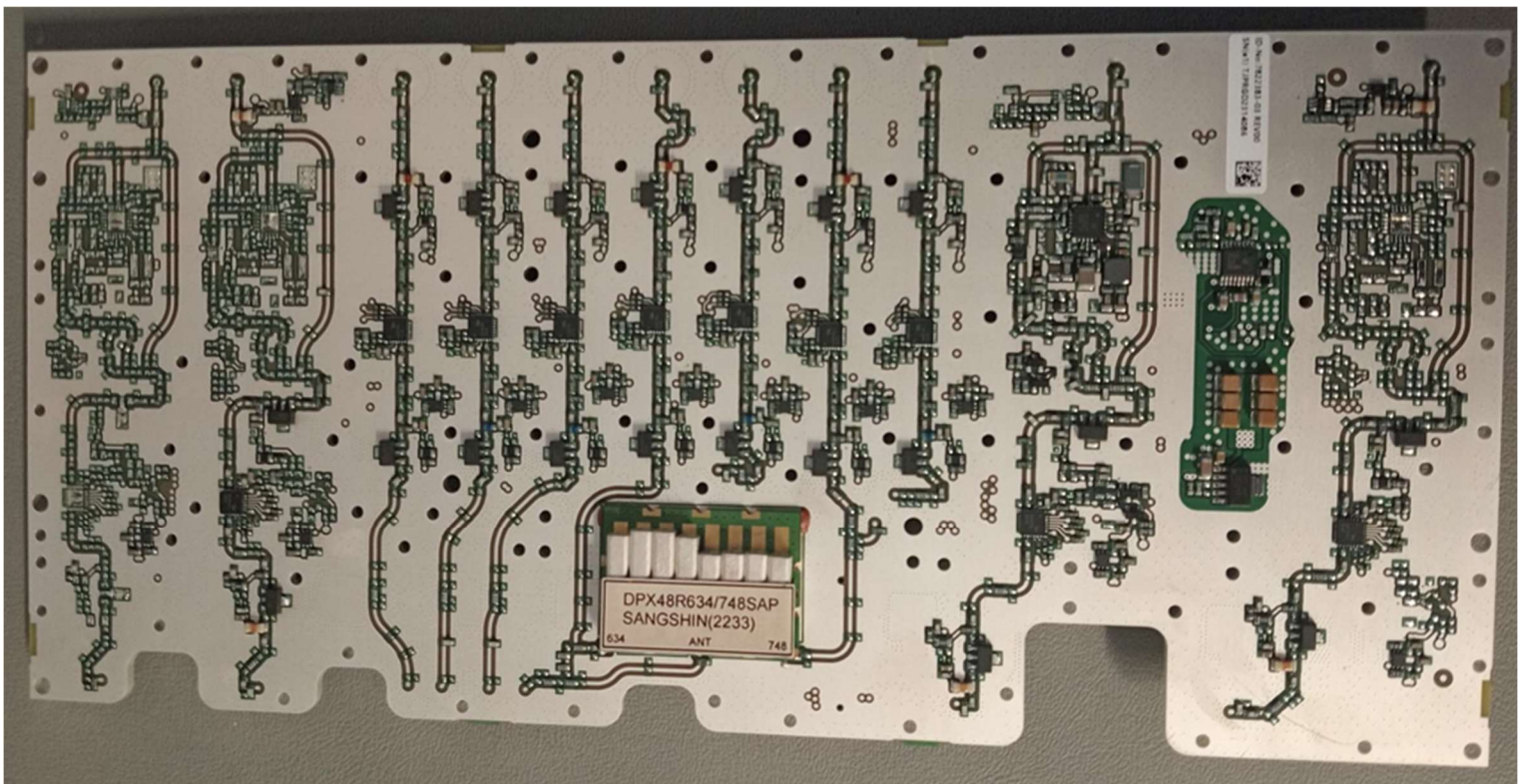
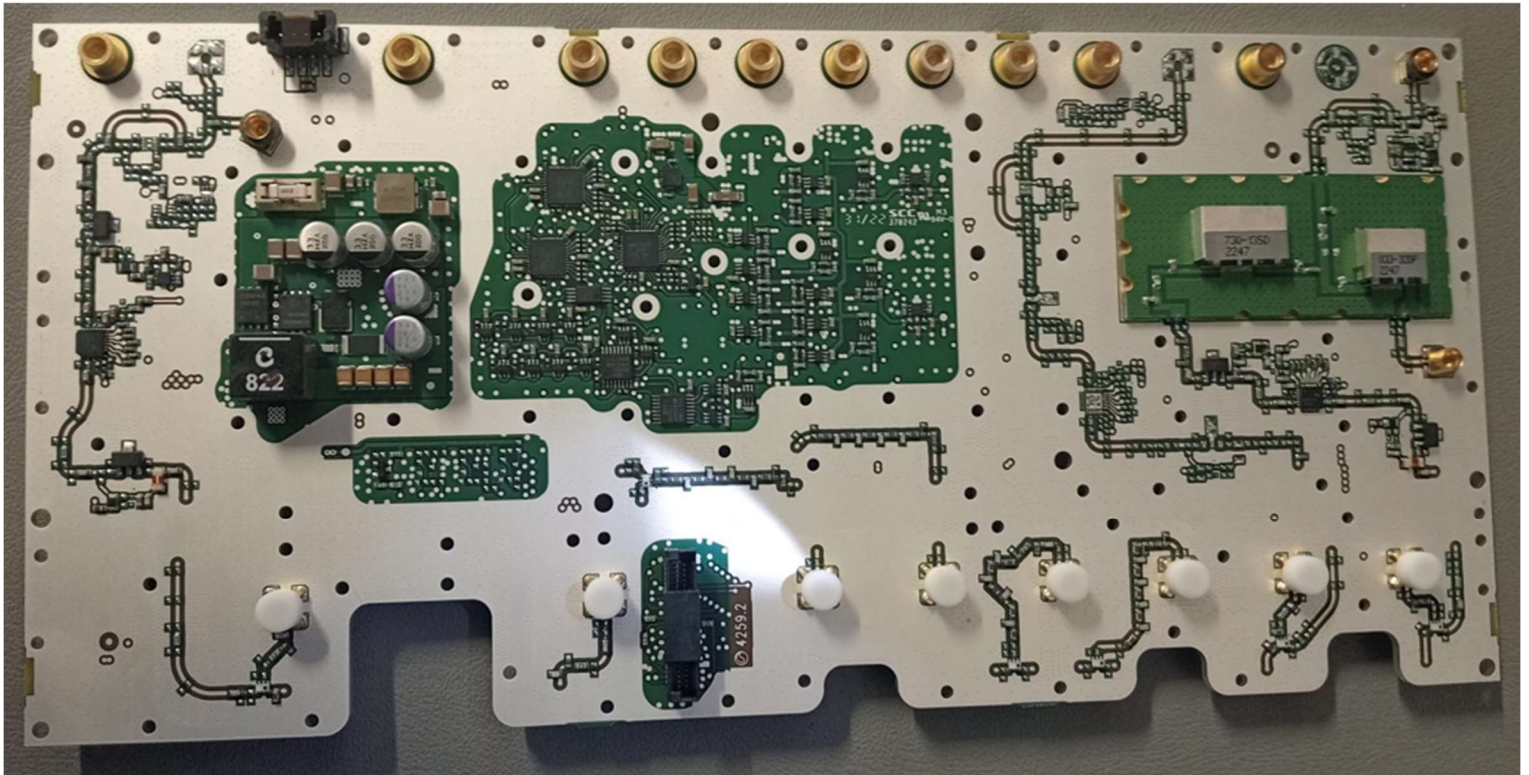
PCBA P4233 CAP MX LPA (7813402-04)





# RFM CAPMX (7828195-00)

PCB P4259 RF Board UL1/DL1/TDD1 CAP-M7 (7822383-02)





**SPM, ZU15, CAPMX (7845187-01)**

PCB P4325 SPM F1/C12 (7845185-01)

