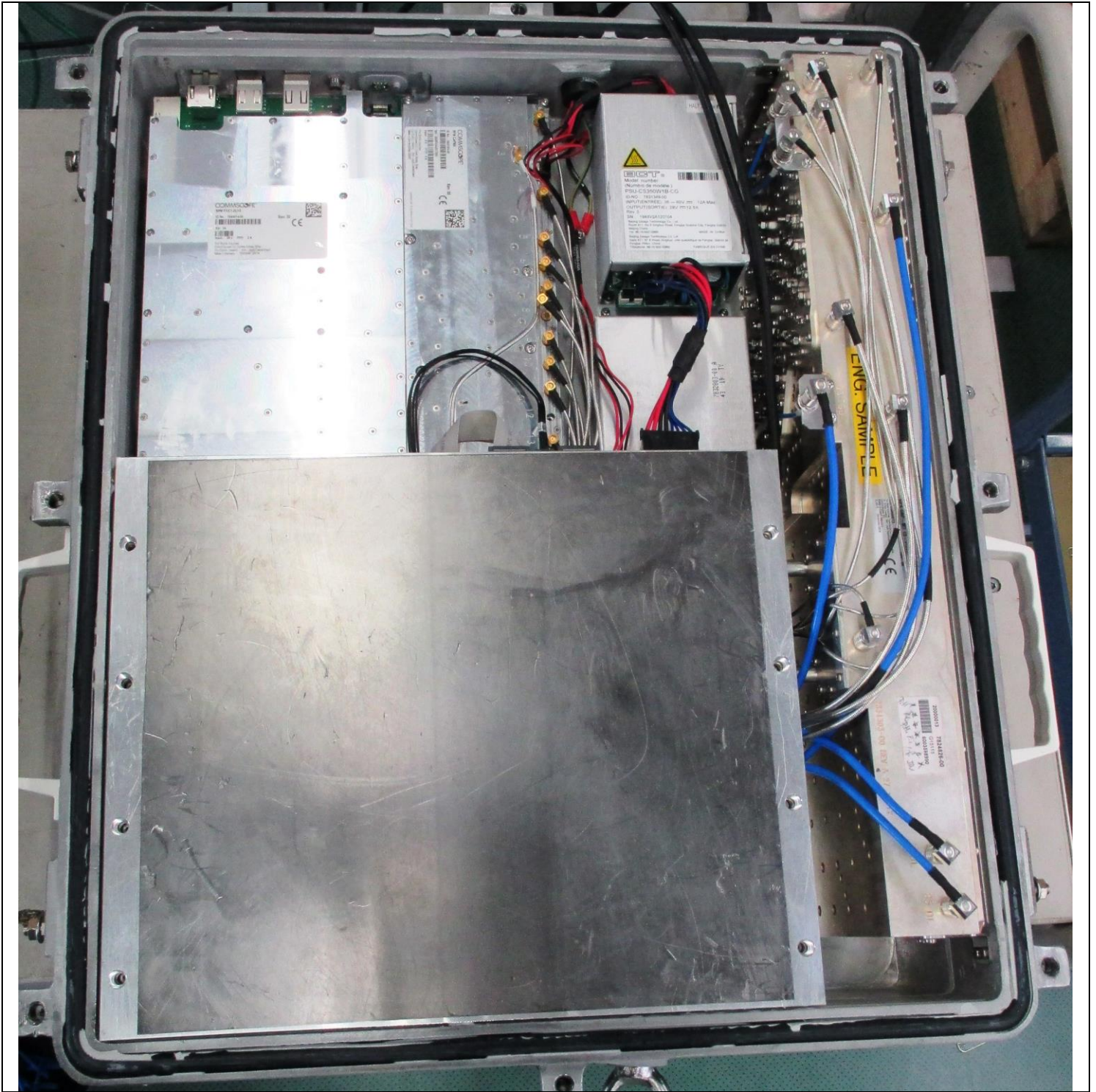
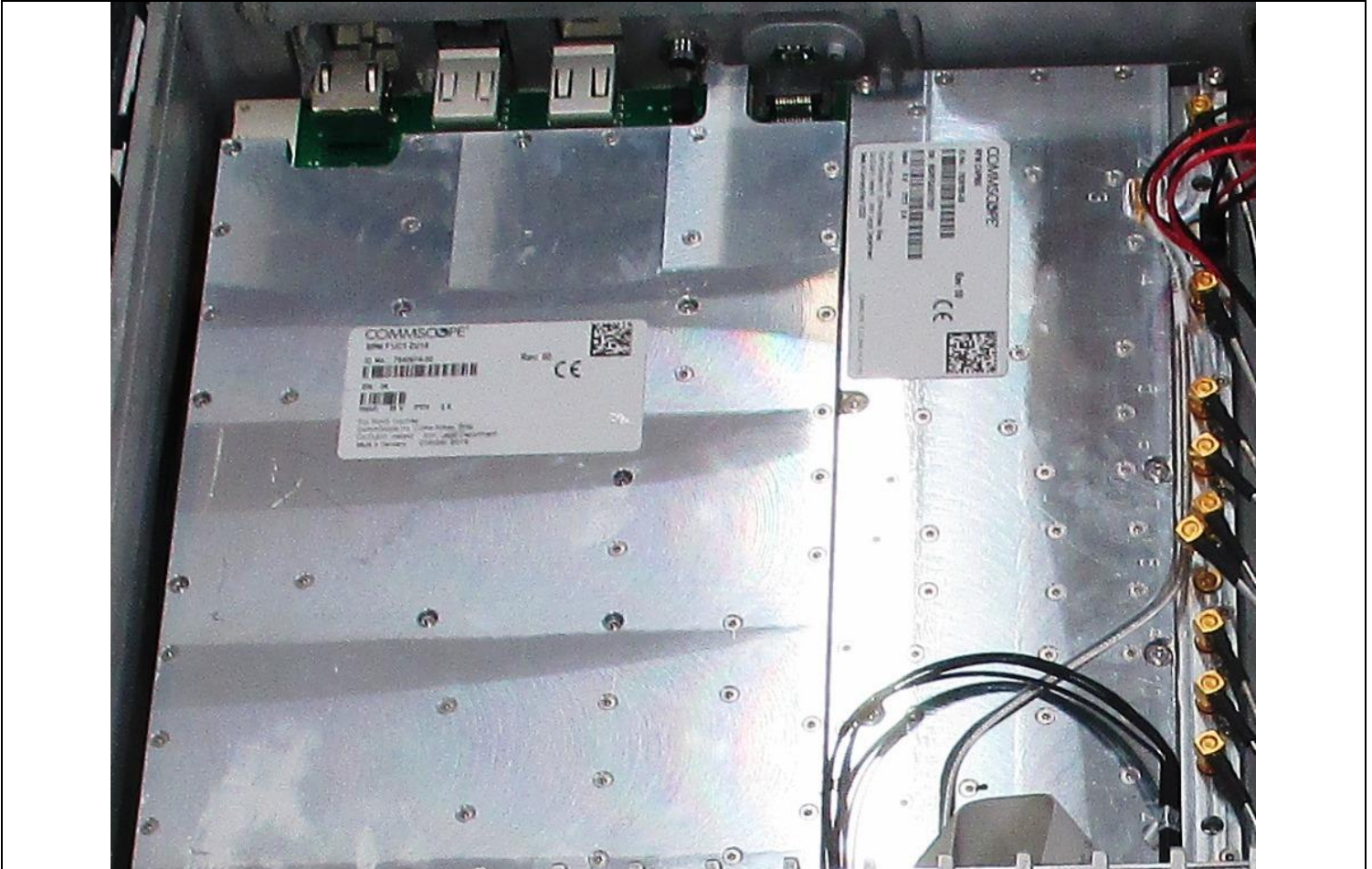
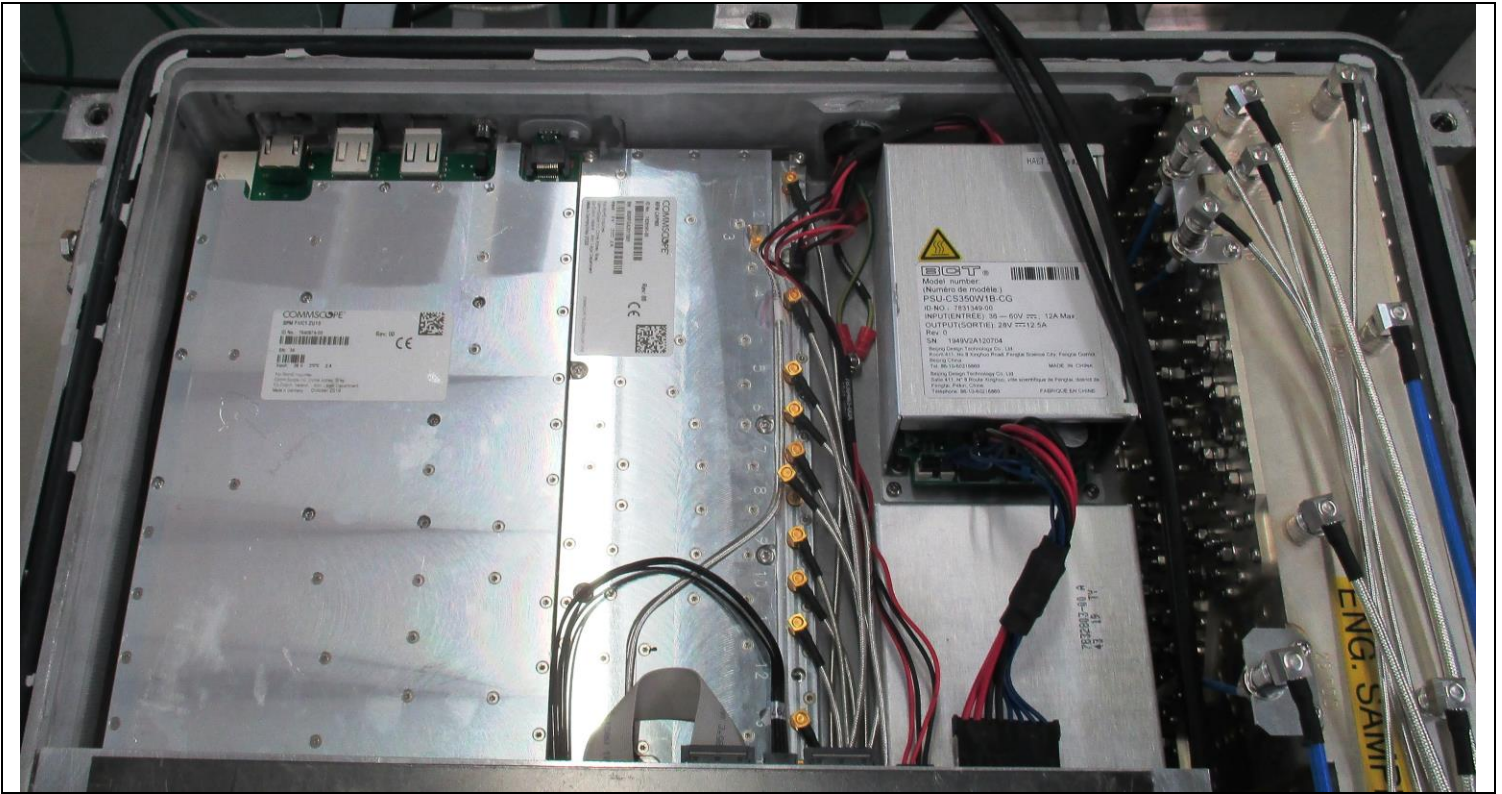


Internal Photos CAP MX 7830127-xxxx



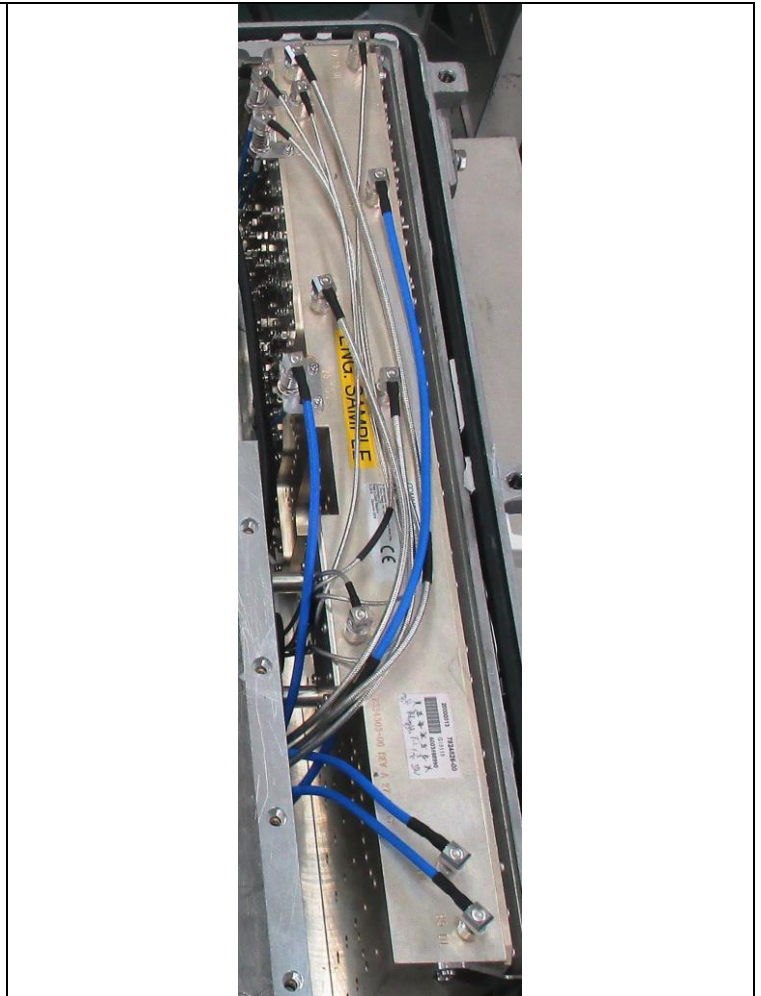


SPM, ZU15, CAPMX (7831068-00)
Signal Processing Module

RFM CAPMX (7828195-00)
Radio Frequency Module

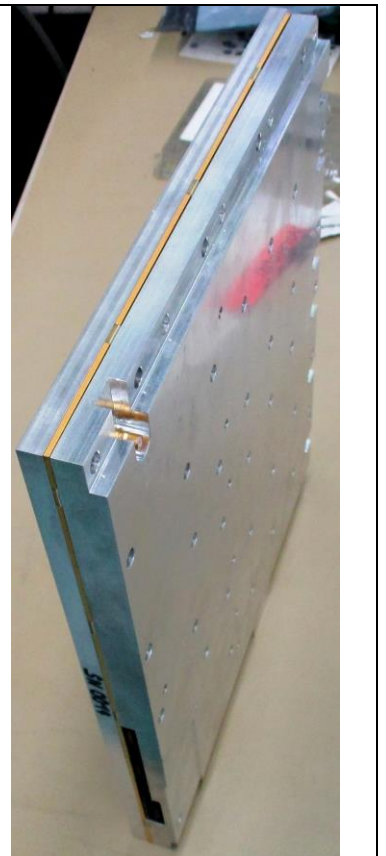
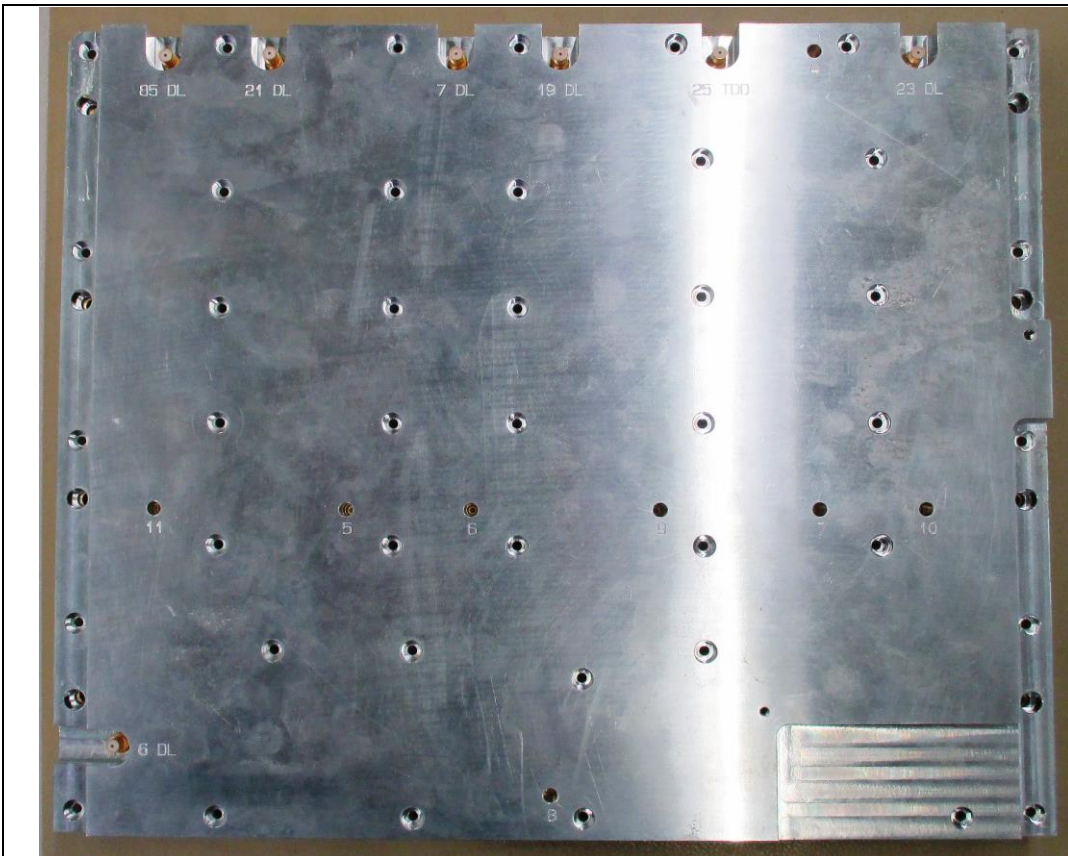
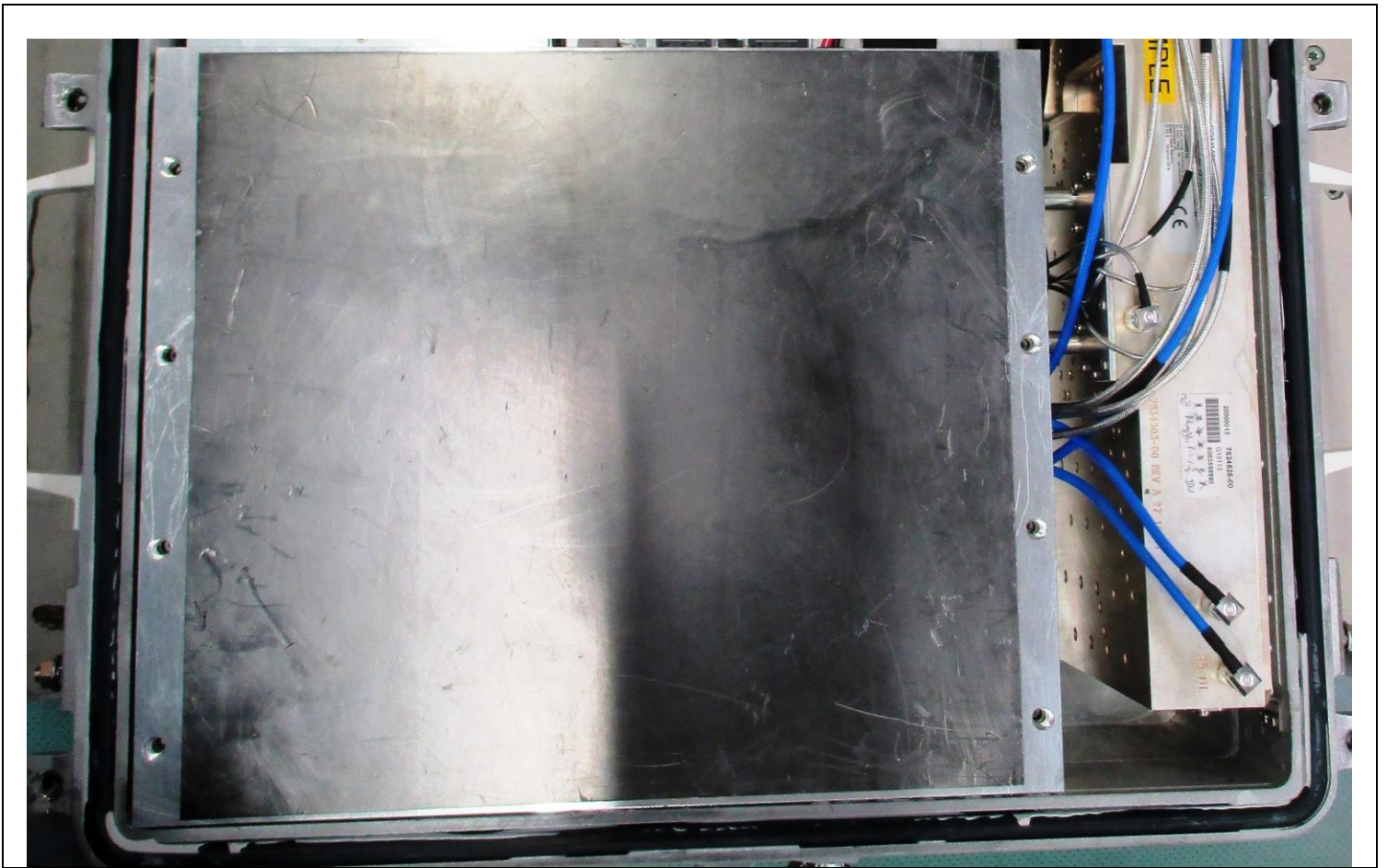


POWER SUPPLY UNIT (7836454) & PoE/PSE, CAP-MX (7832802-00)



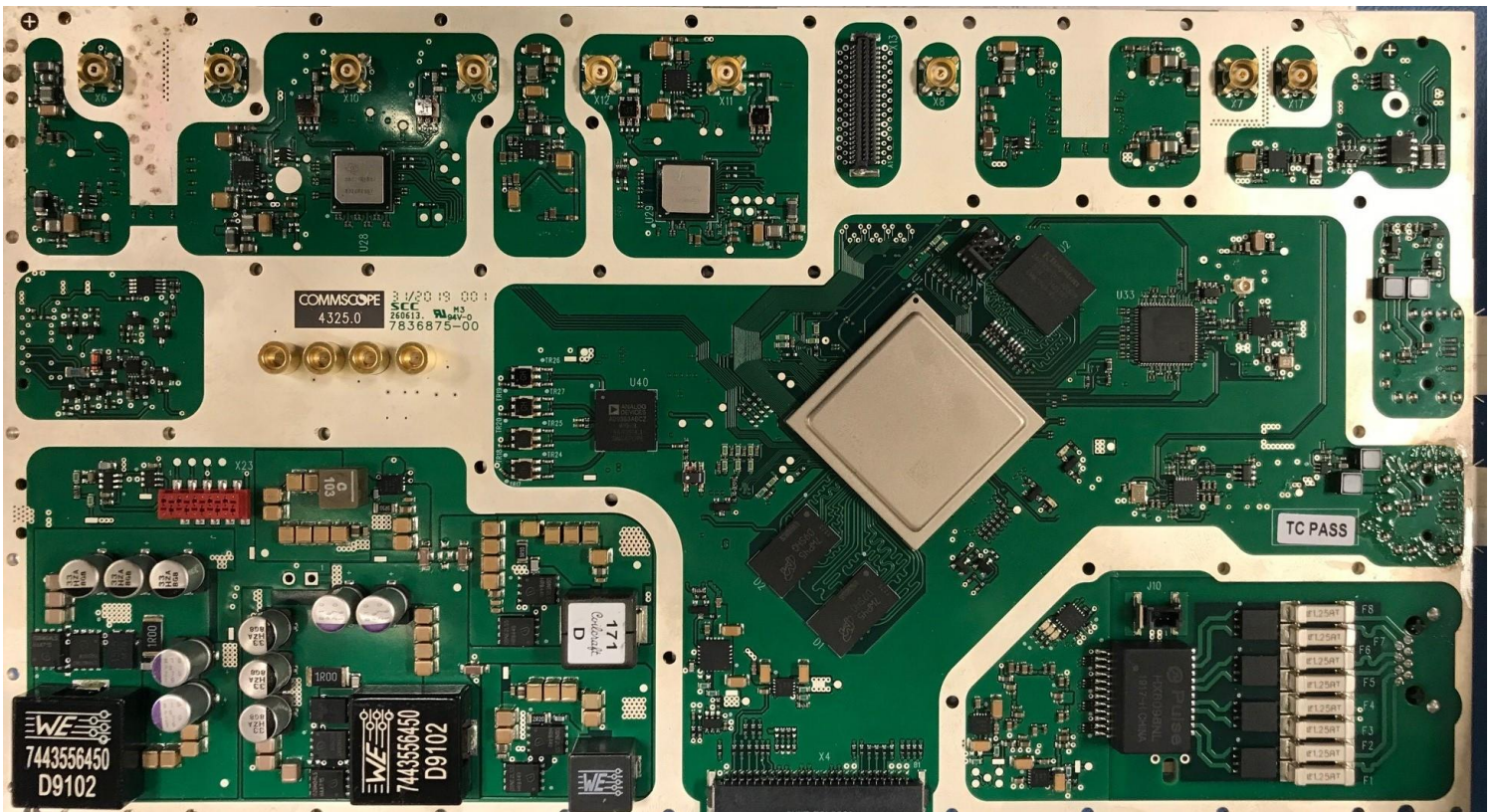
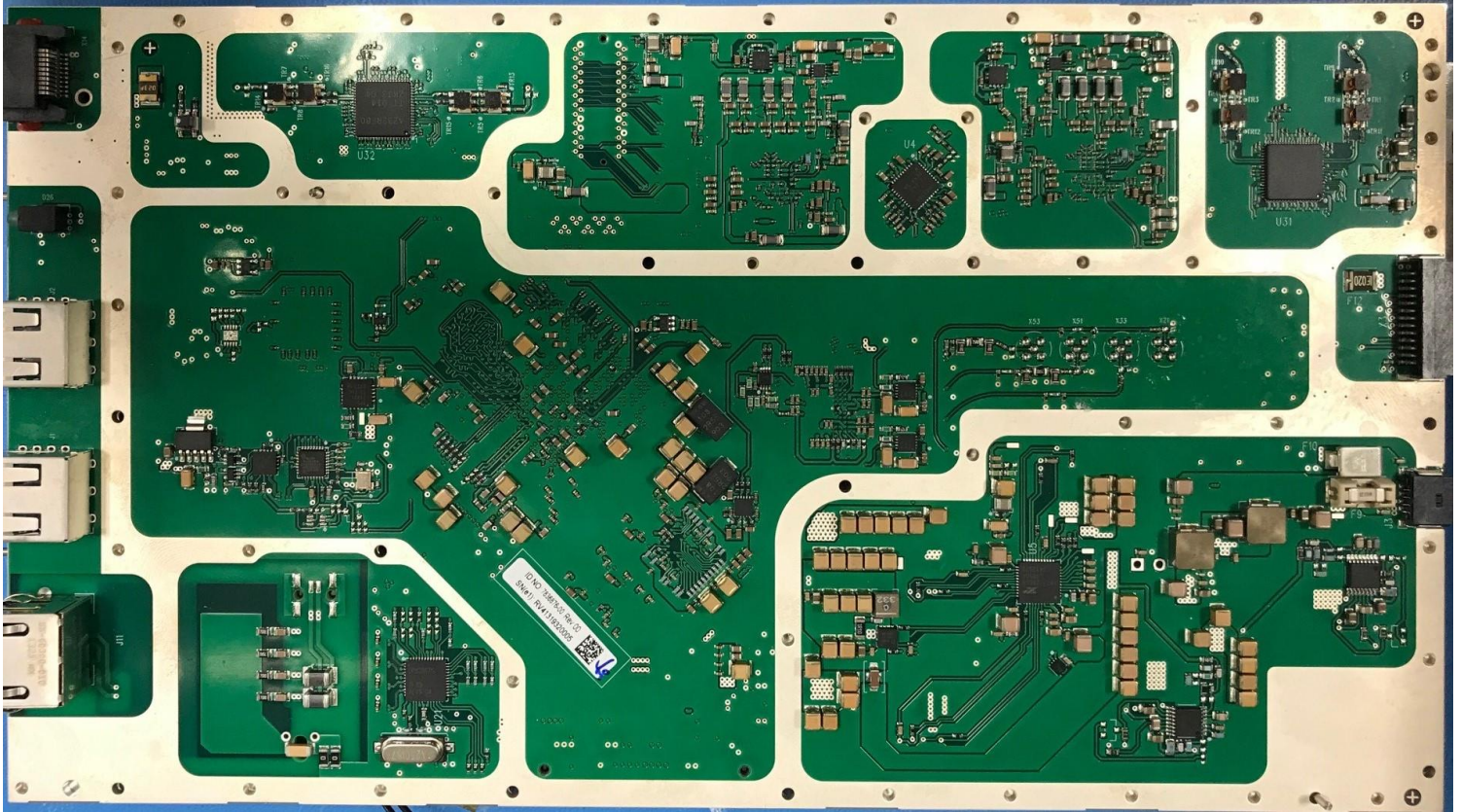
DPX CAP-M7 13-plexer (7824826-00)





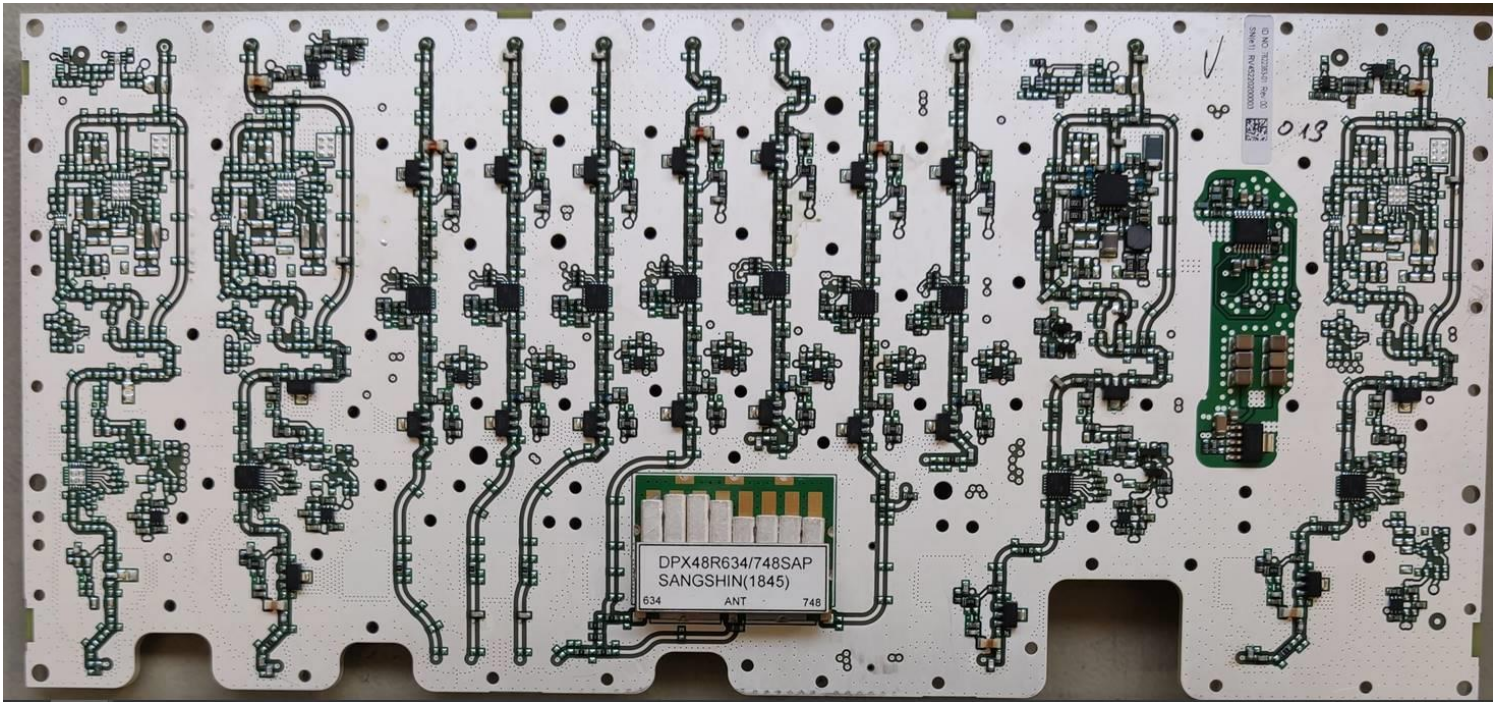
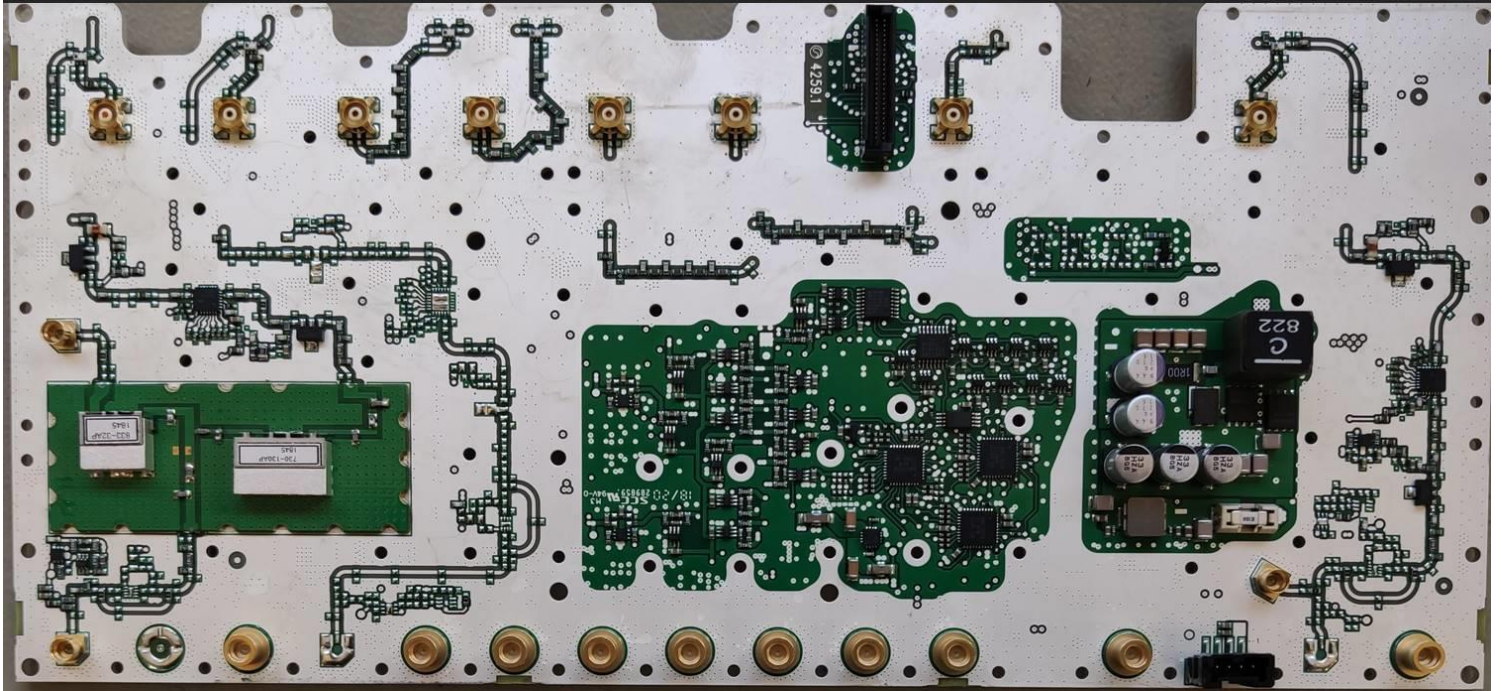
PA Module, CAP MX (7833429-00)
Power Amplifier Module

SPM, ZU15, CAPMX (7831068-00)
PCB P4325 SPM F1/C11 (7836876-00)

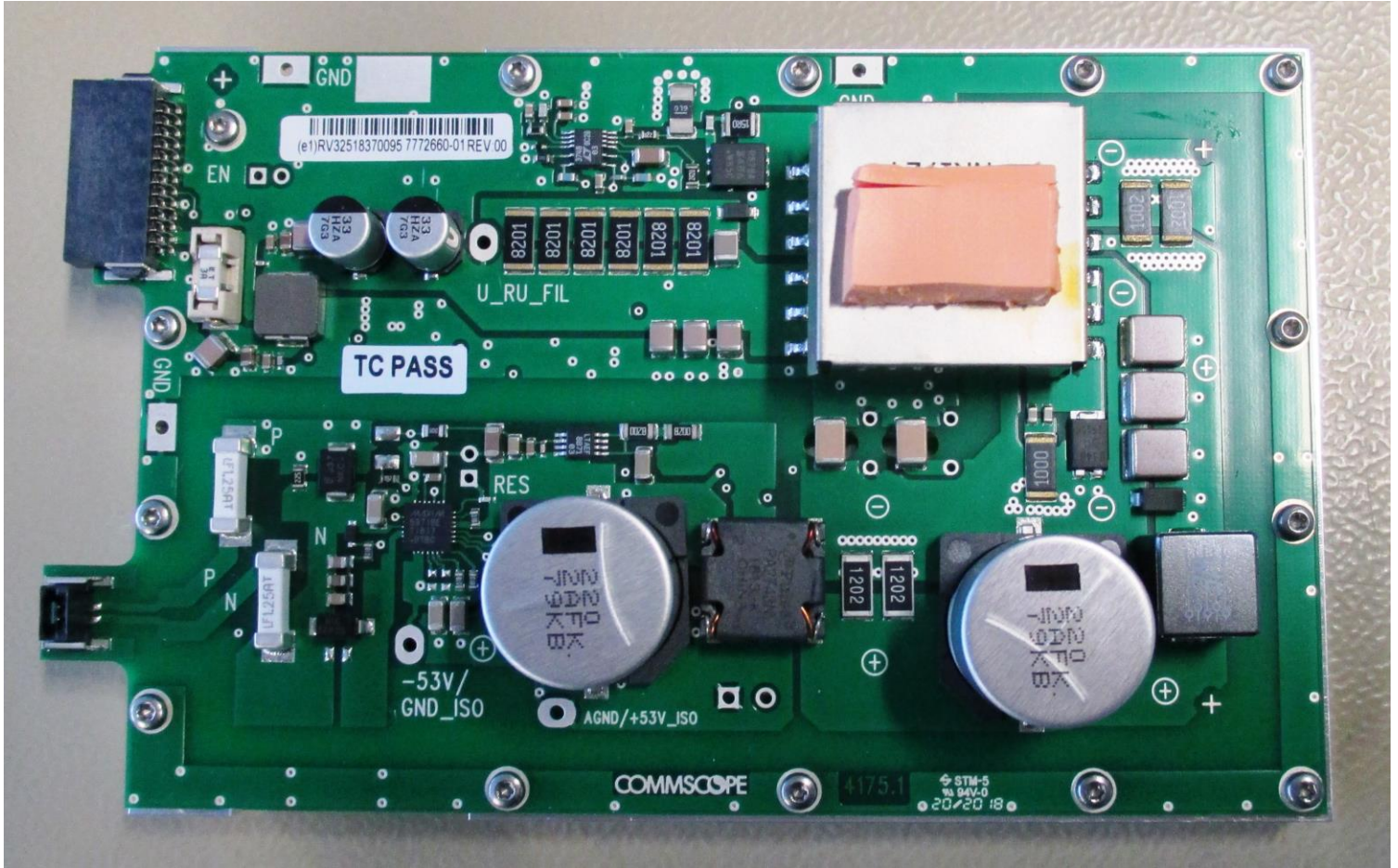


RFM CAPMX (7828195-00)

PCB P4259 RF Board UL1/DL1/TDD1 CAP-M7 (7822383-01)



PoE/PSE, CAP-MX (7832802-00)
PCB P4175 CAP-H PoE/PSE Board (7772660-01)



Power Supply Unit



PA Module, CAP MX (7833429-00)
PCBA P4233 CAP MX LPA (7813402-02)

