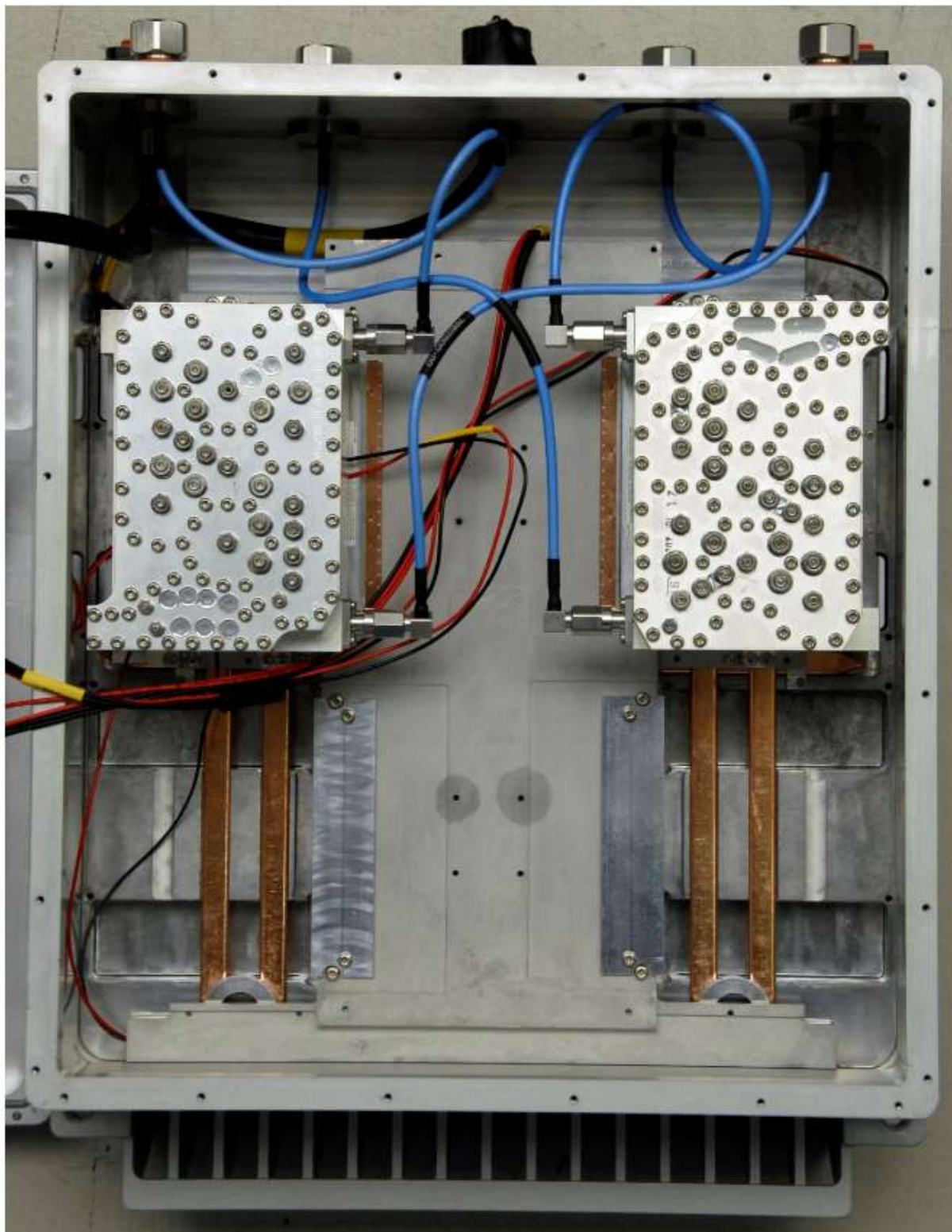


# CAP M2 C-Band

## Internal Photos

AP complete

Open Cover

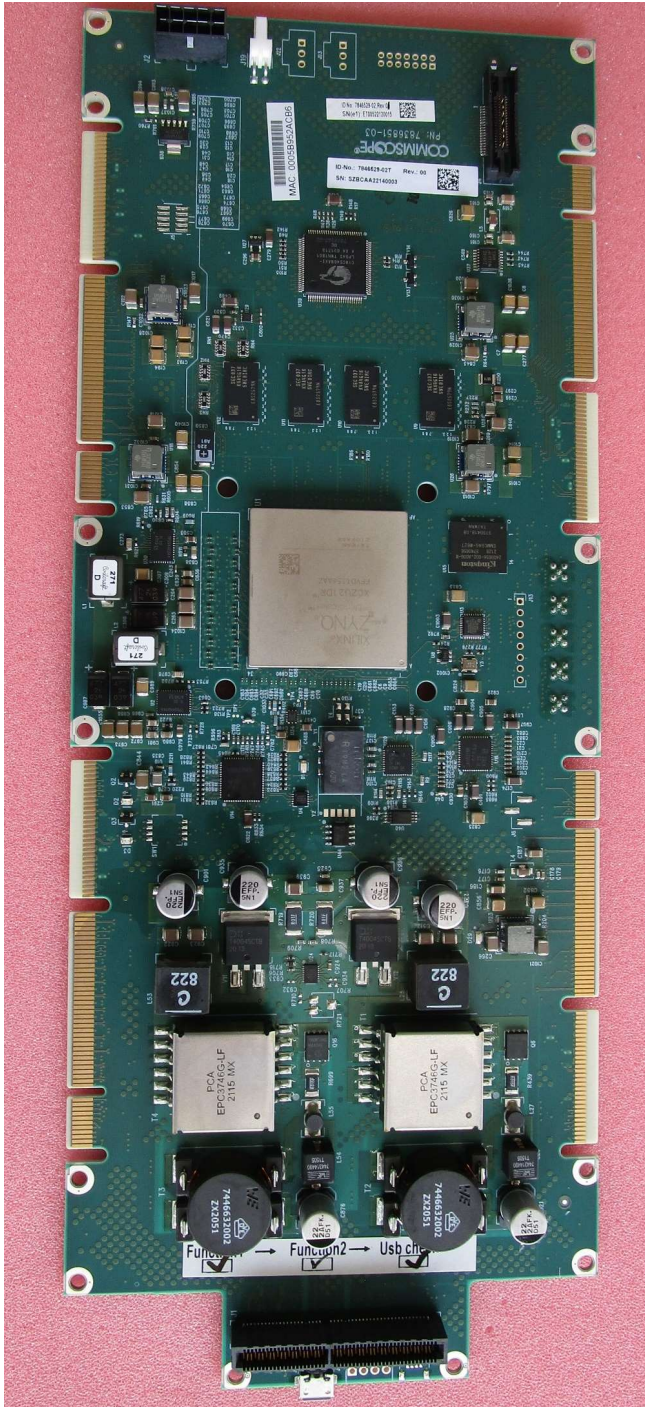


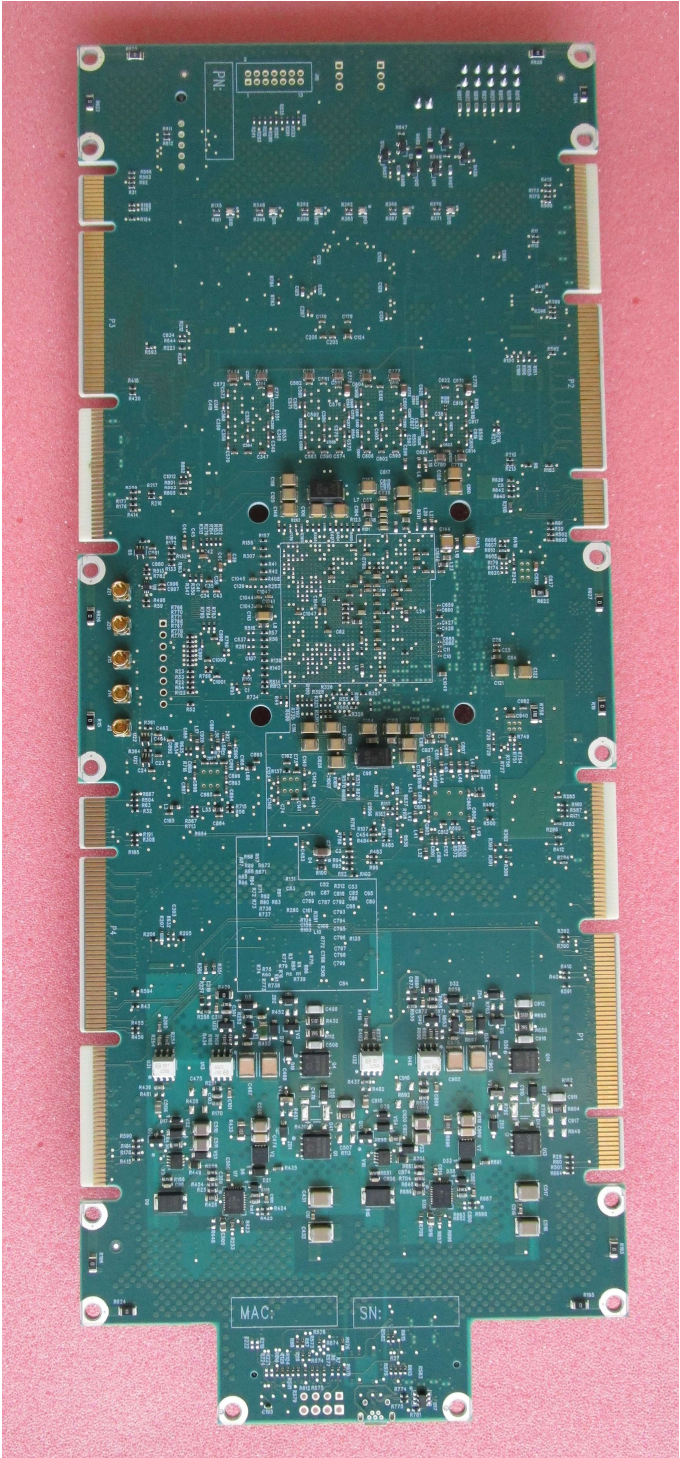
DC PSU inside



Internal Photos CAP M2 C-Band PCBAs

BBC



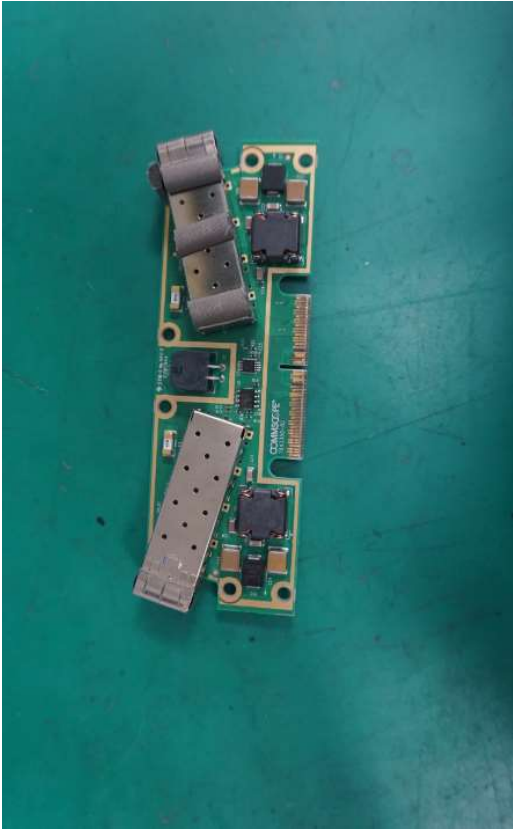


DPEM

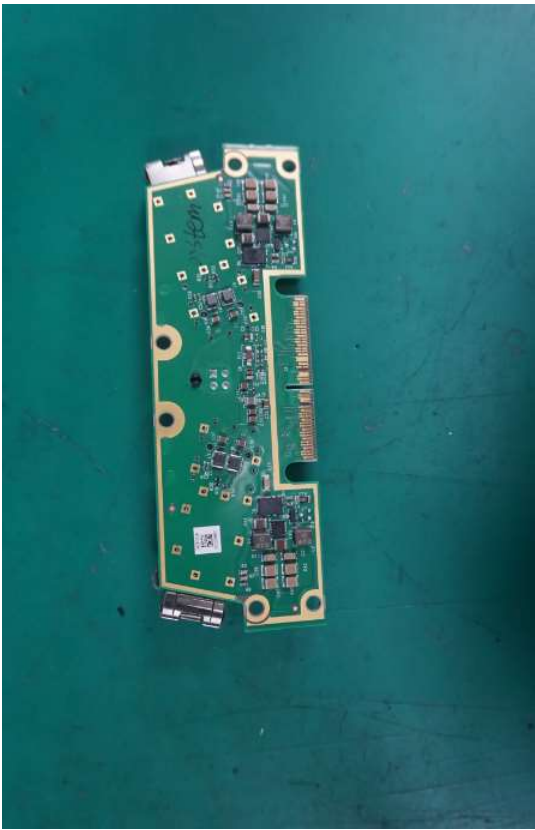
Module



PCBA: Bottom

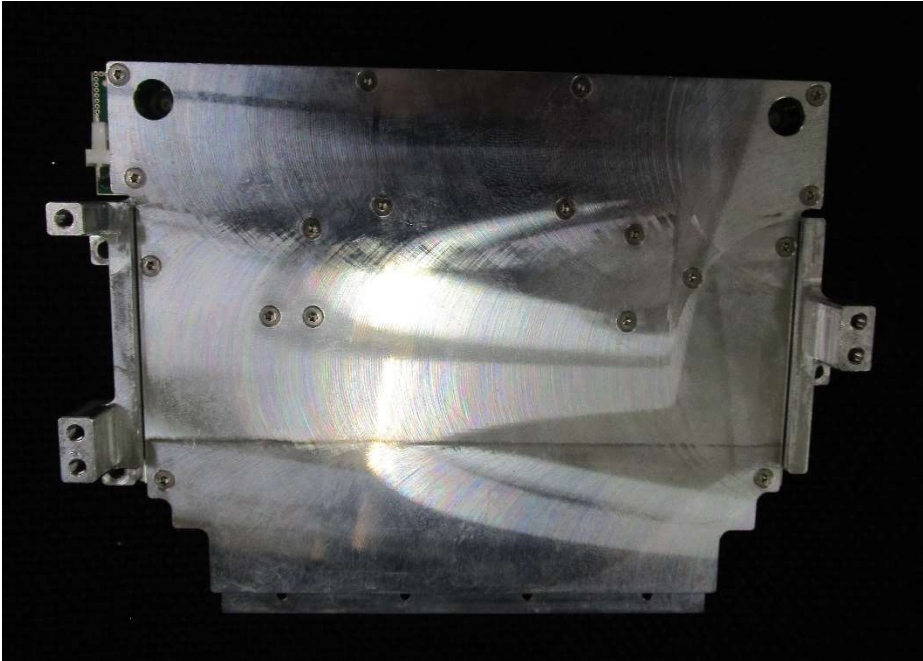


Top



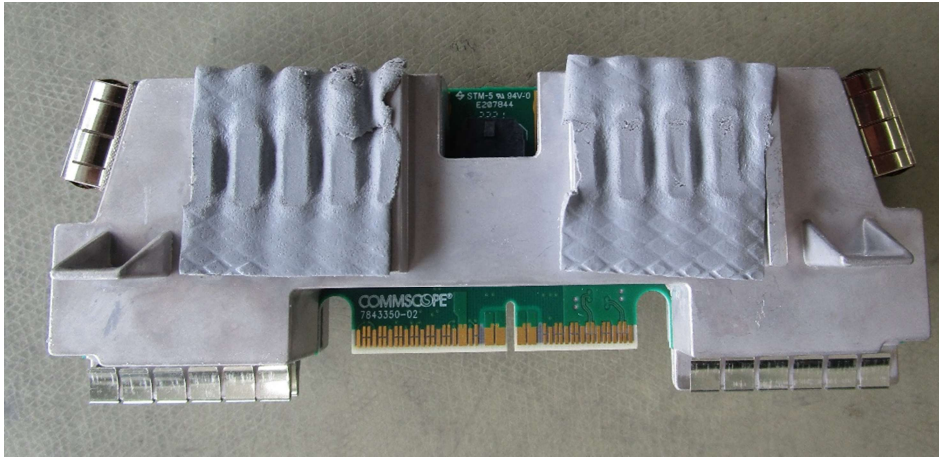
Internal Photos CAP M2 C-Band PCBAs

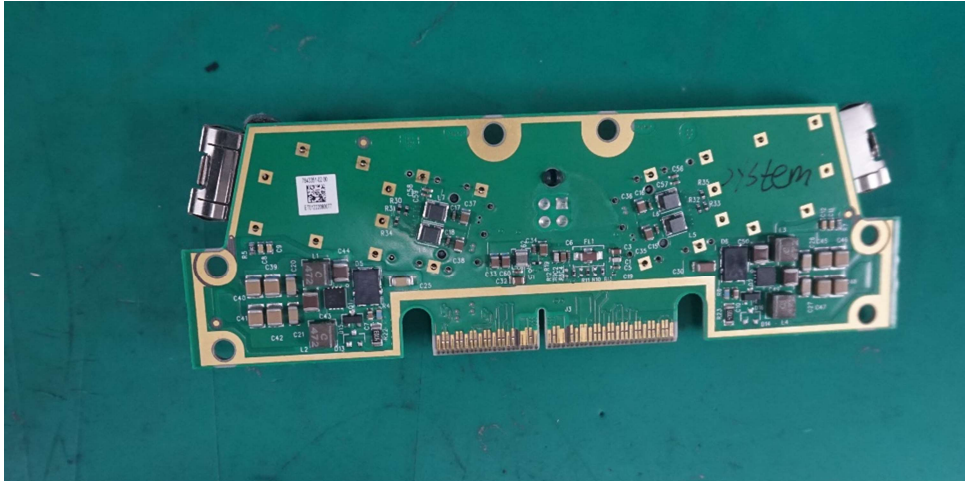
Radio Module



# Internal Photos CAP M2 C-Band PCBAs

DPEM



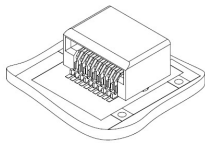


Shielding covers:

Fotos required with all shieldings mounted and removed to show the components covered by the shielding

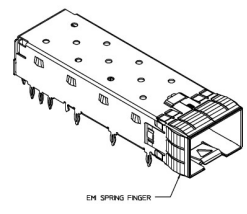
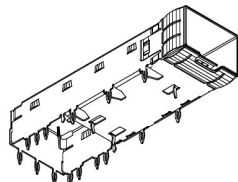


DPEM: It is not a shielding, it is the connector housing

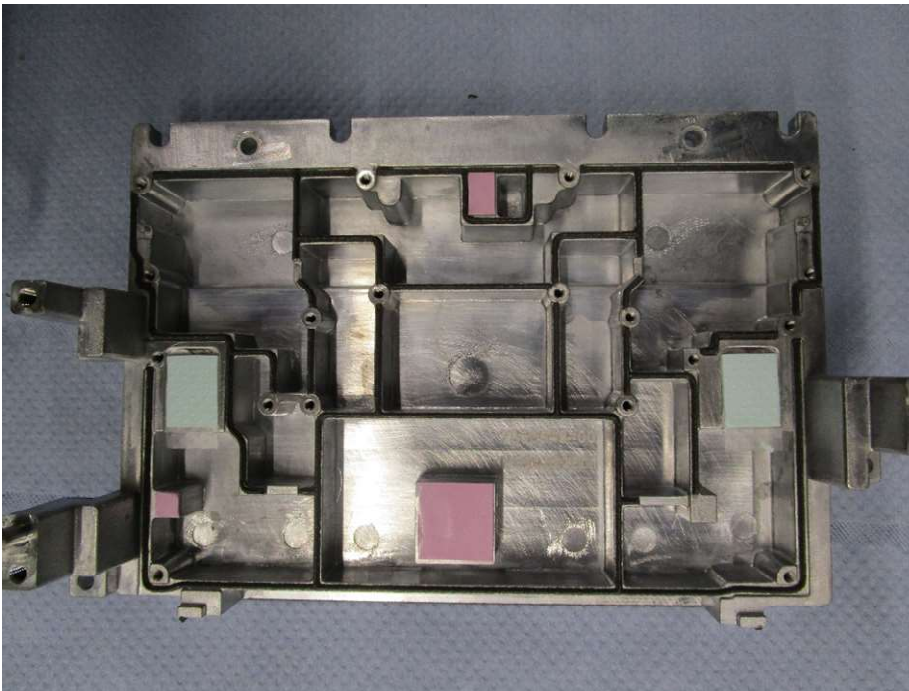
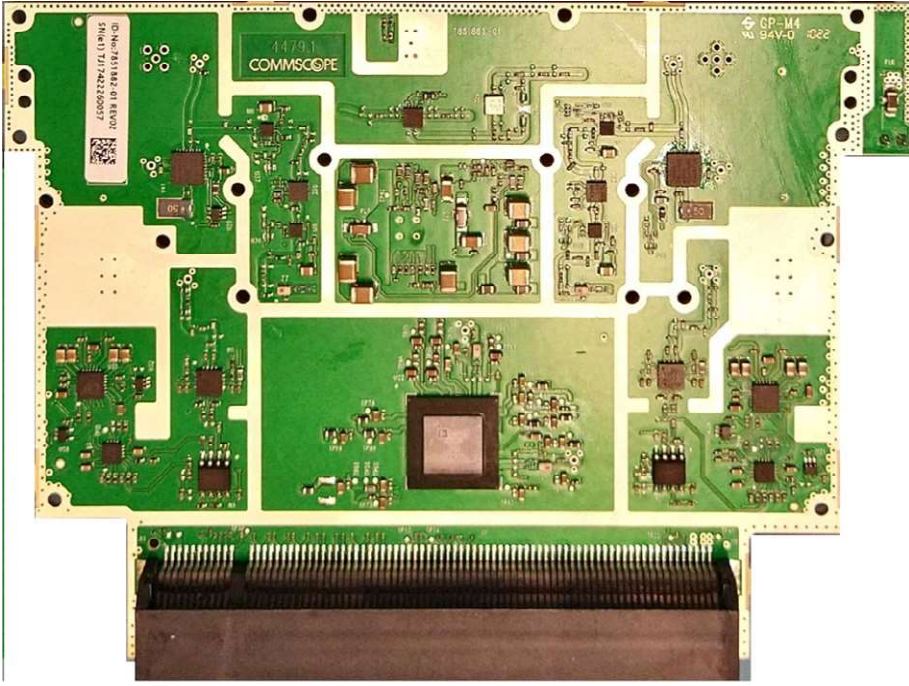


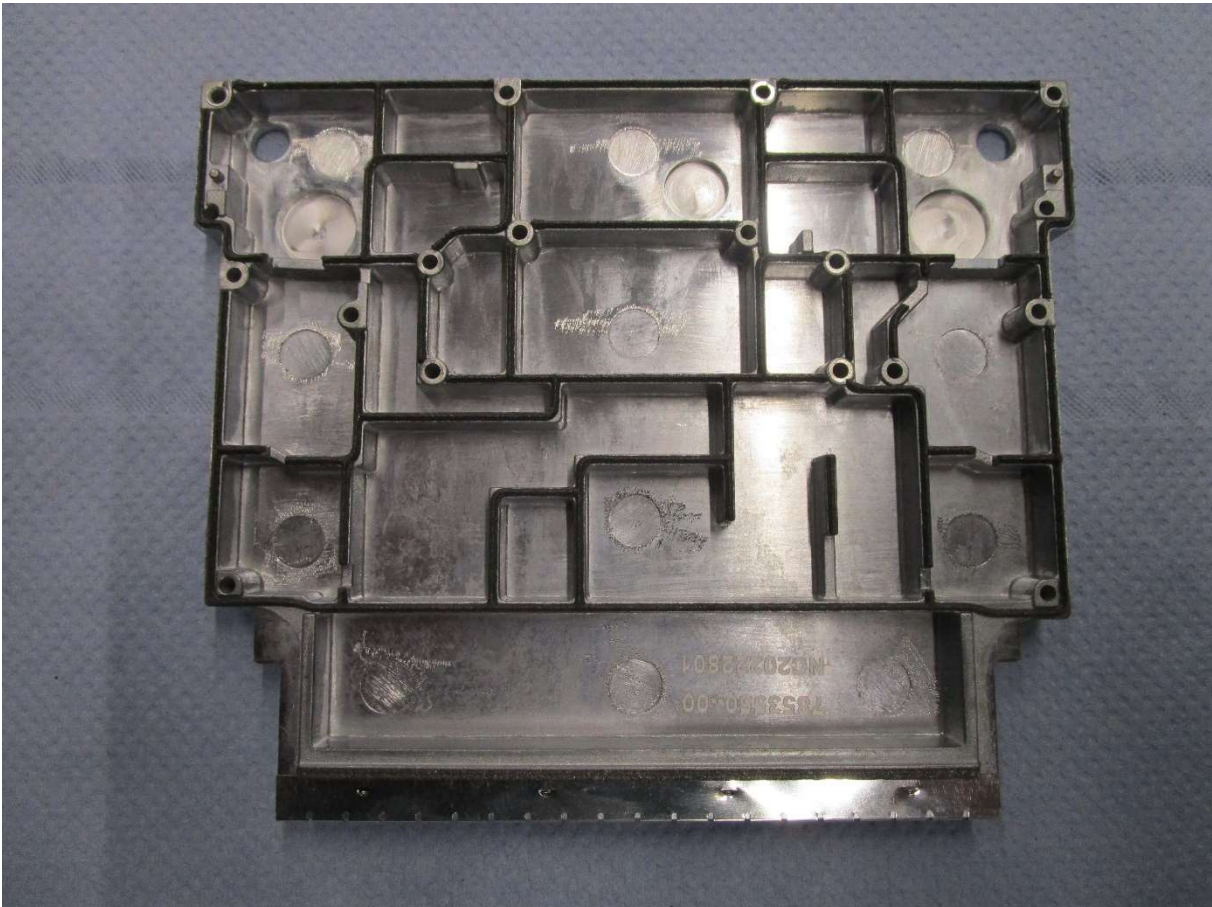
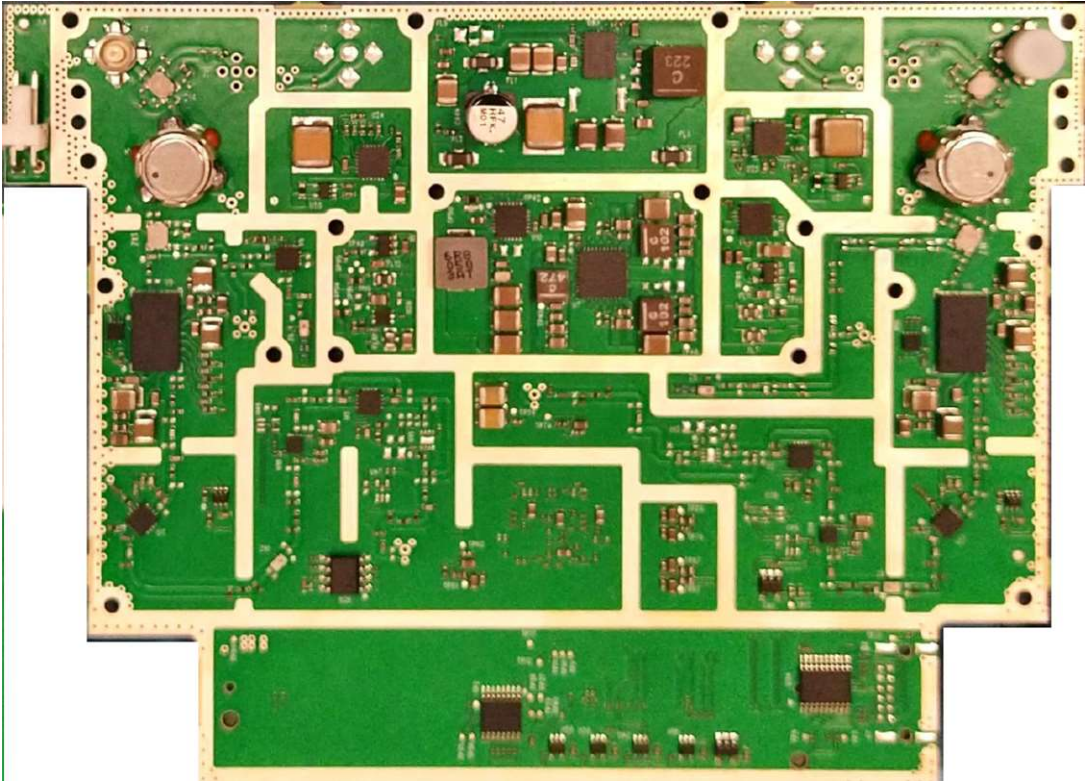
- NOTES
1. MATERIALS:  
HOUSING - NEW THERMOPLASTIC THERMOPLASTIC GLASS FILLED UL 90V-0 BLACK  
TERMINALS - COPPER ALLOY
  2. PLATING:  
CONTACT AREA - 0.38 IN TH GOLD OVER 254 IN TH NICKEL  
SOLDER FOOT AREA - 254 - 0.05 IN TH OVER 254 IN TH NICKEL
  3. PLATING:  
CONTACT AREA - 0.76 IN TH GOLD OVER 254 IN TH NICKEL  
GOLDER AREA - 254 - 0.05 IN TH OVER 254 IN TH NICKEL
  4. PLATING:  
CONTACT AREA - 0.76 IN TH GOLD OVER 254 IN TH NICKEL  
SOLDER AREA GOLD PLATED OVER 254 IN TH NICKEL
  5. TERMINAL SOLDER FEET TO BE DISPLAYED WITHIN 0.10
  6. DATE CODE - 4 DIGIT IS DATE DATE - 1 DIGIT YEAR

REV	DATE	DESCRIPTION	BY	CHKD	APP'D	QTY	REVISION
1	01/11/01	INITIAL DESIGN	...	...	...	...	...
2	02/11/01	REVISED DESIGN	...	...	...	...	...
3	03/11/01	REVISED DESIGN	...	...	...	...	...
4	04/11/01	REVISED DESIGN	...	...	...	...	...
5	05/11/01	REVISED DESIGN	...	...	...	...	...
6	06/11/01	REVISED DESIGN	...	...	...	...	...
7	07/11/01	REVISED DESIGN	...	...	...	...	...
8	08/11/01	REVISED DESIGN	...	...	...	...	...
9	09/11/01	REVISED DESIGN	...	...	...	...	...
10	10/11/01	REVISED DESIGN	...	...	...	...	...
11	11/11/01	REVISED DESIGN	...	...	...	...	...
12	12/11/01	REVISED DESIGN	...	...	...	...	...









PSU

AC

