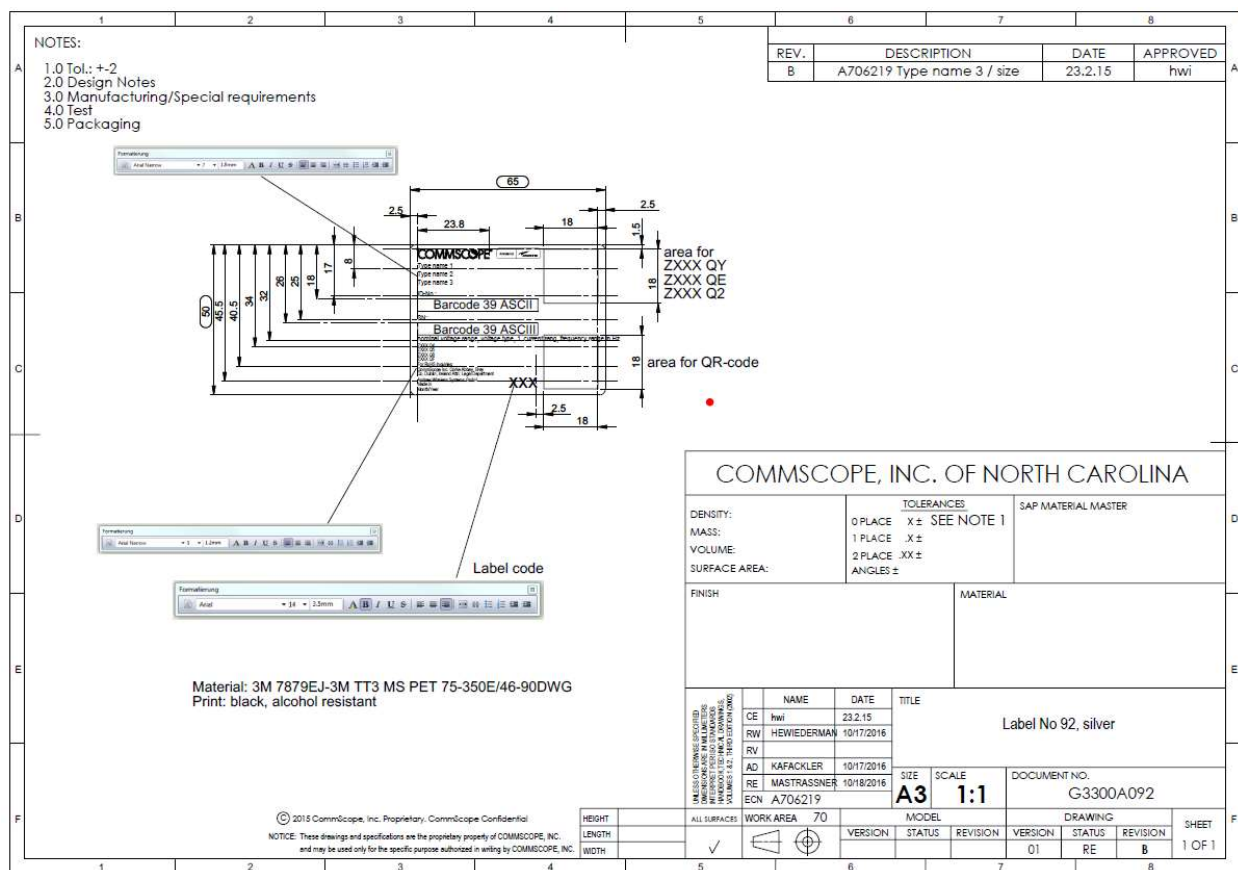


# Labels

7820689-0001

7820689-0002



**WARNING.** This is NOT a CONSUMER device.  
It is designed for installation by FCC (or ISED in Canada) licensees and qualified installers. You **MUST** have an FCC LICENSE or the express consent of an FCC licensee to operate this device (or ISED license or licensee consent in Canada). In the USA, unauthorized use may result in significant forfeiture penalties, including penalties in excess of \$100,000 for each continuing violation.

# FCC

**AVERTISSEMENT:** Ce produit N'EST PAS un appareil de CONSOMMATION. Il est conçu pour être installé par un installateur approuvé par un titulaire de licence d'ISDE. Pour utiliser cet appareil, vous DEVEZ détenir une LICENCE d'ISDE ou avoir obtenu le consentement exprès d'un titulaire de licence autorisé par ISDE.

**INTENDED USE: EU AND EFTA COUNTRIES**

To be sold exclusively to mobile operators or authorized installers, no harmonised frequency bands, operation needs license.

Andrew Wireless Systems GmbH  
Industriering 10, 86675 Buchdorf / Germany



Recycling information can be obtained from the WEEE recycling selection at [www.CommsCope.com](http://www.CommsCope.com) For Patents See [www.CS-pat.com](http://www.CS-pat.com)

ID: 7677757-04

# Labels location





COMMScope  
CAP M 23/23/25/25-F-AC  
ID No: 7920699-0001 Rev:01



SN: SZCMAD1844001

Input: 100-240VAC 1.65 - 0.69A 50-60Hz

FCC ID: XS5-CAPM23232525

For North America  
CommScope Inc. One Abbey Blvd.  
Bridgewater, NJ 08807-1001  
USA  
CommScope (UK) Ltd. 15, Colindale Avenue  
London NW9 1EU  
Made in China  
©CommScope Inc. 2018  
01-0422



**NOTICE**

This device complies with Part 15 of FCC Rules. Operation is subject to the following two options: (1) this device may not cause harmful interference, and (2) this device must accept any interference received, including interference that may cause undesired operation.

