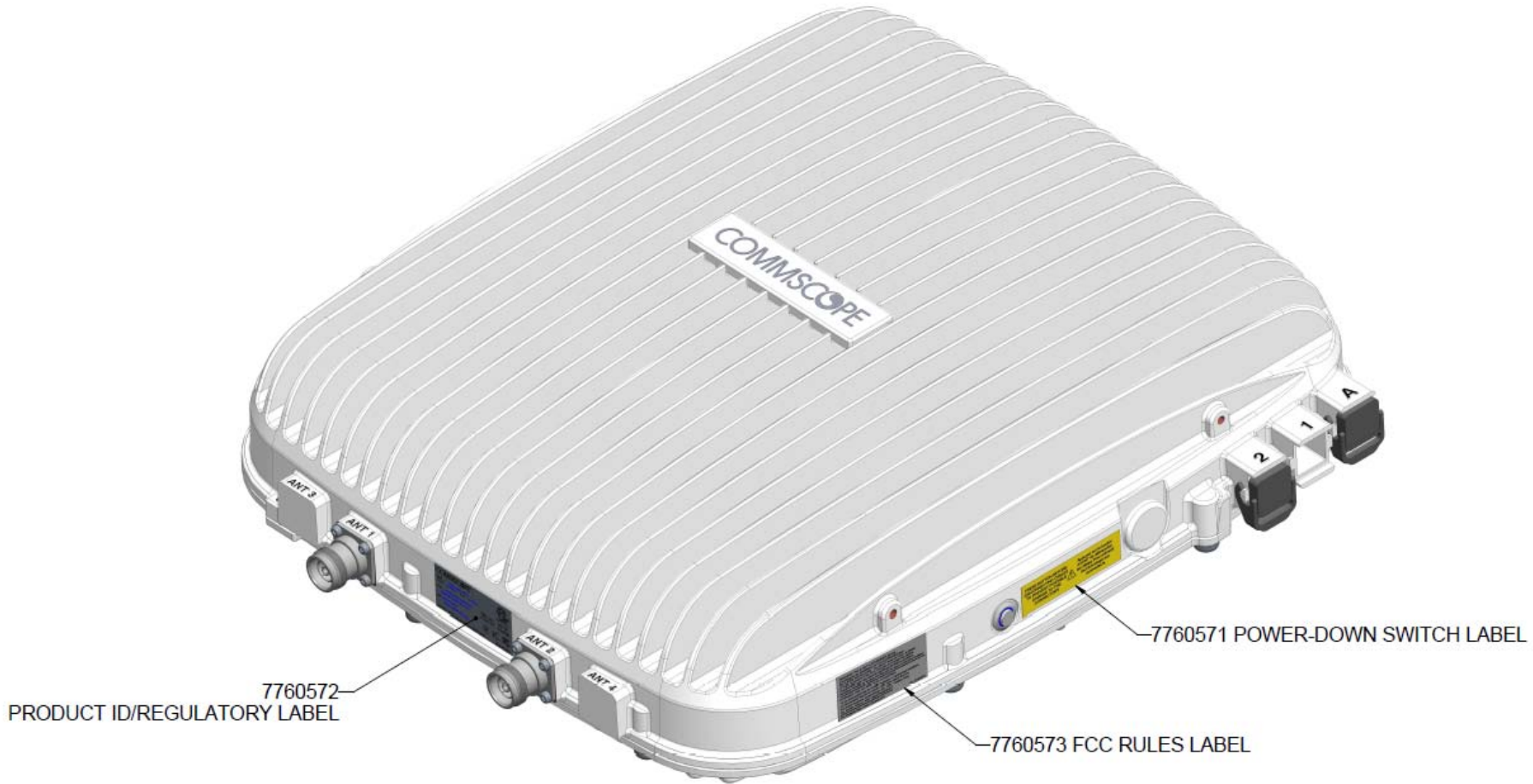
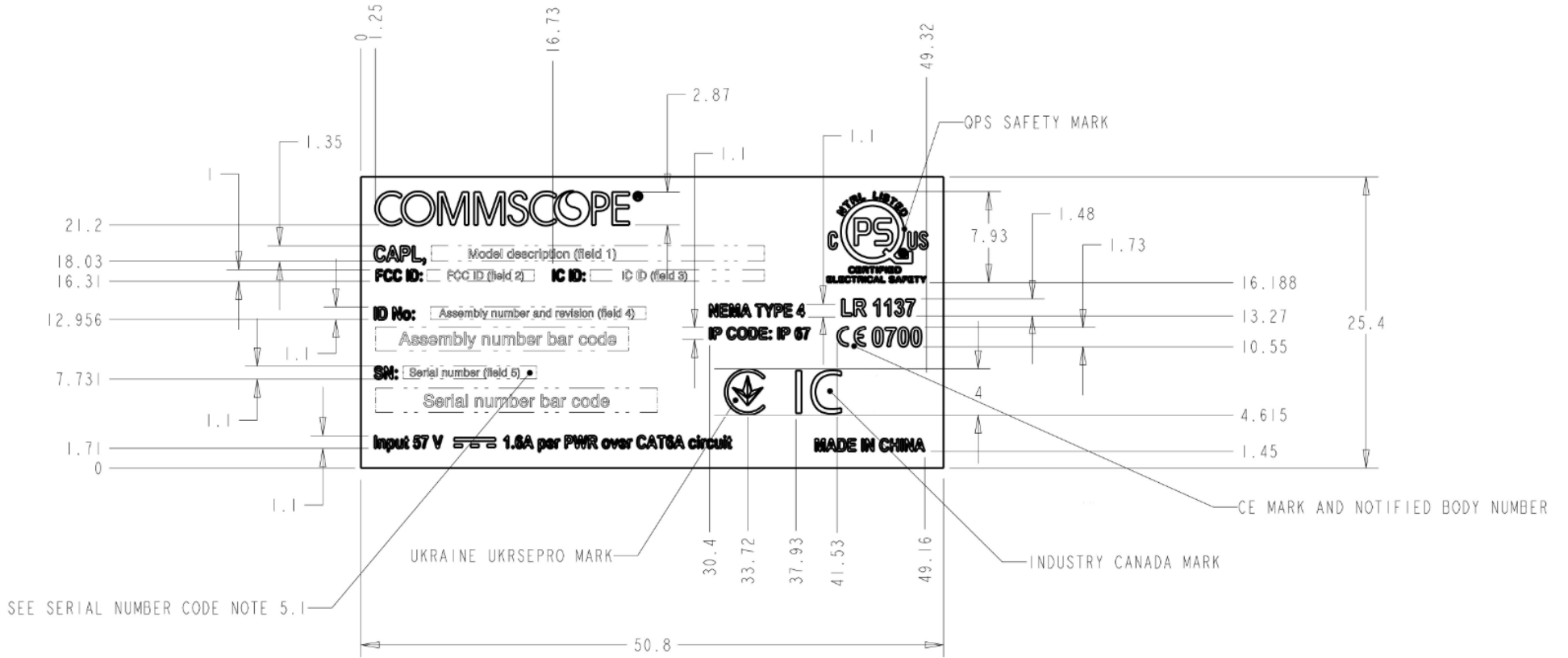


# Label Location



PRODUCT ID/REGULATORY LABEL



FCC RULES LABEL

**WARNING.** This is NOT a CONSUMER device.  
It is designed for installation by FCC (or ISED in Canada) licensees and qualified installers. You MUST have an FCC LICENSE or the express consent of an FCC licensee to operate this device (or ISED license or licensee consent in Canada). In the USA, unauthorized use may result in significant forfeiture penalties, including penalties in excess of \$100,000 for each continuing violation.

**FCC**

---

**AVERTISSEMENT:** Ce produit N'EST PAS un appareil de CONSOMMATION.  
Il est conçu pour être installé par un installateur approuvé par un titulaire de licence d'ISDE. Pour utiliser cet appareil, vous DEVEZ détenir une LICENCE d'ISDE ou avoir obtenu le consentement exprès d'un titulaire de licence autorisé par ISDE.

---

**INTENDED USE: EU AND EFTA COUNTRIES**

To be sold exclusively to mobile operators or authorized installers,  
no harmonised frequency bands, operation needs license.

Andrew Wireless Systems GmbH  
Industriering 10; 86675 Buchdorf / Germany



**CE**

---

For Patents See [www.CS-pat.com](http://www.CS-pat.com)

**ID: 7677757-03**

POWER-DOWN SWITCH LABEL

