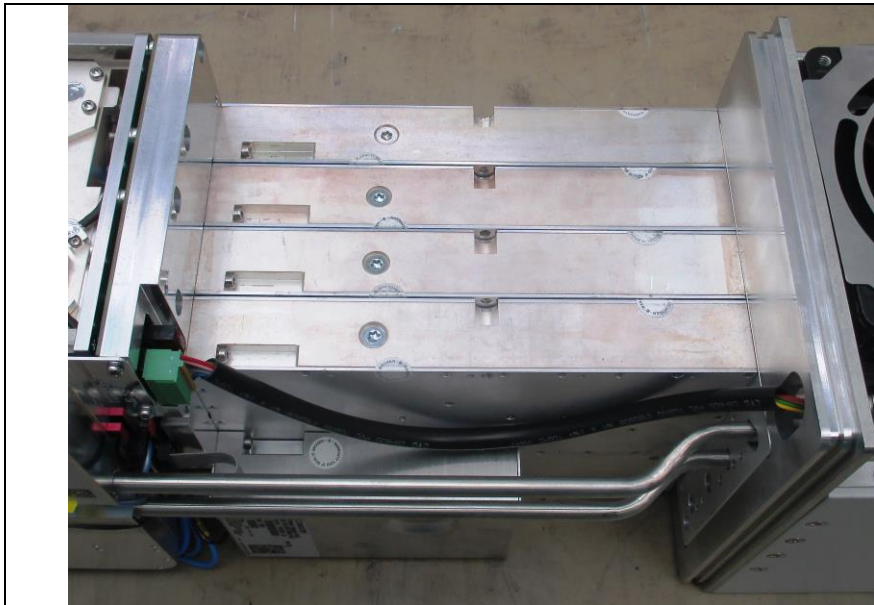
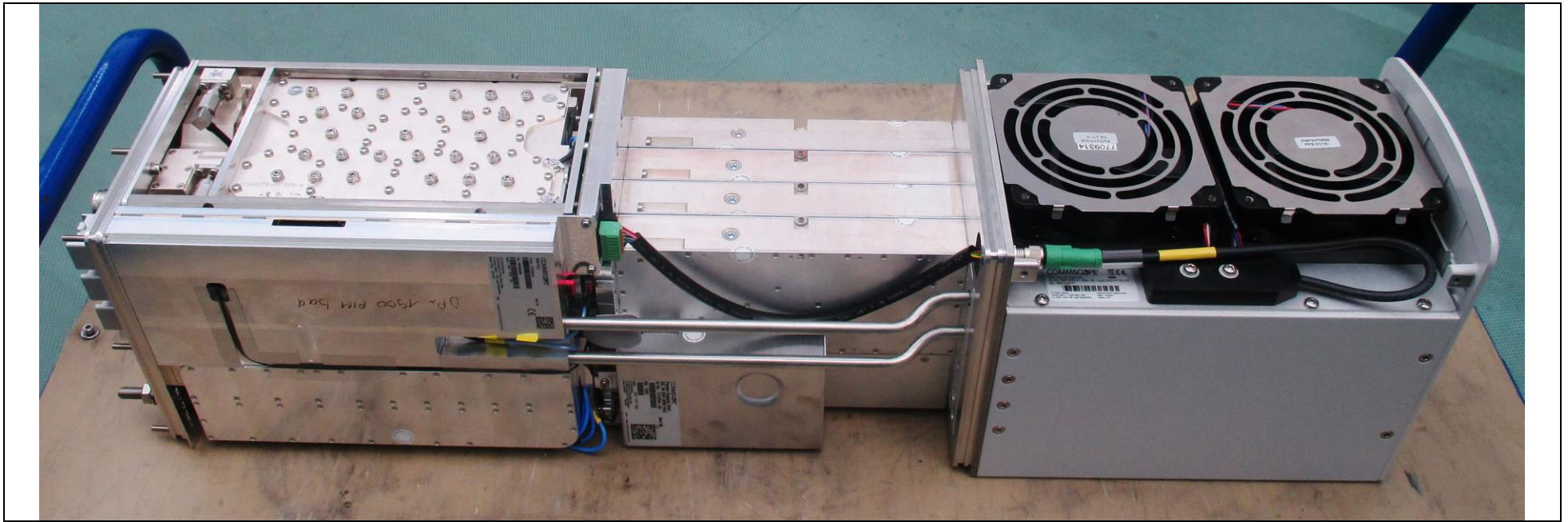
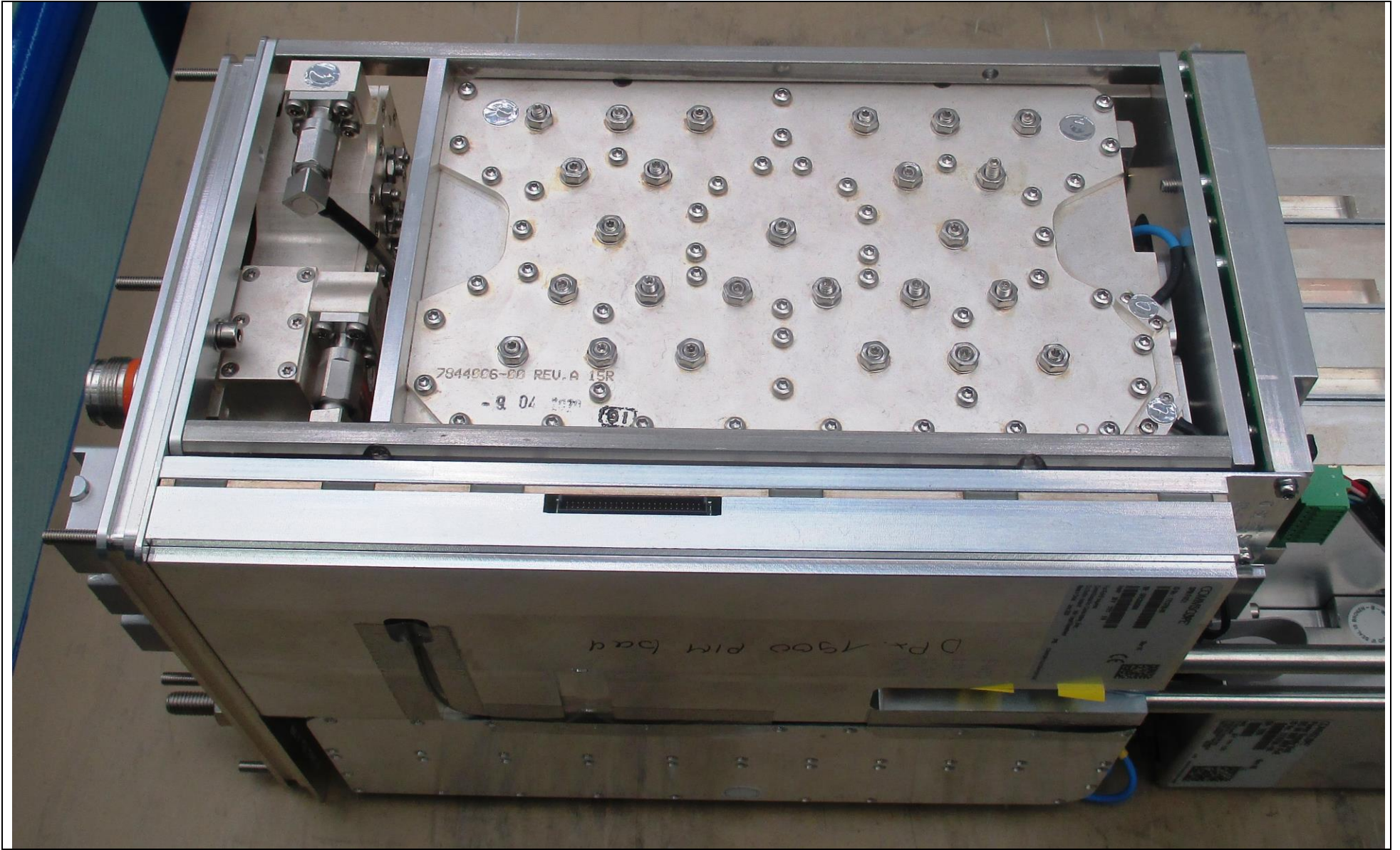


Internal CAP H 80-85/17E/19/26 (7841153-xxxx)

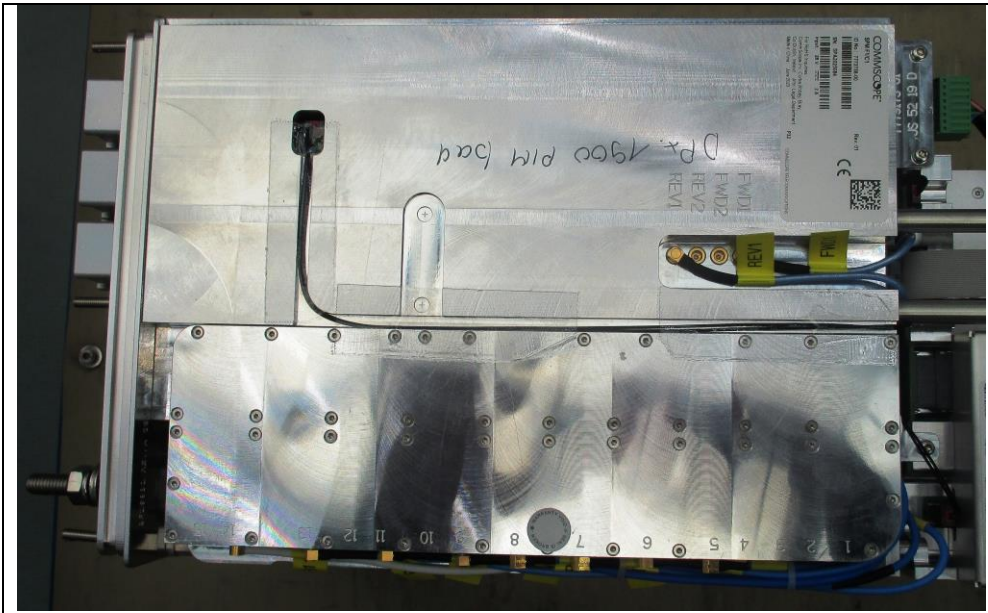
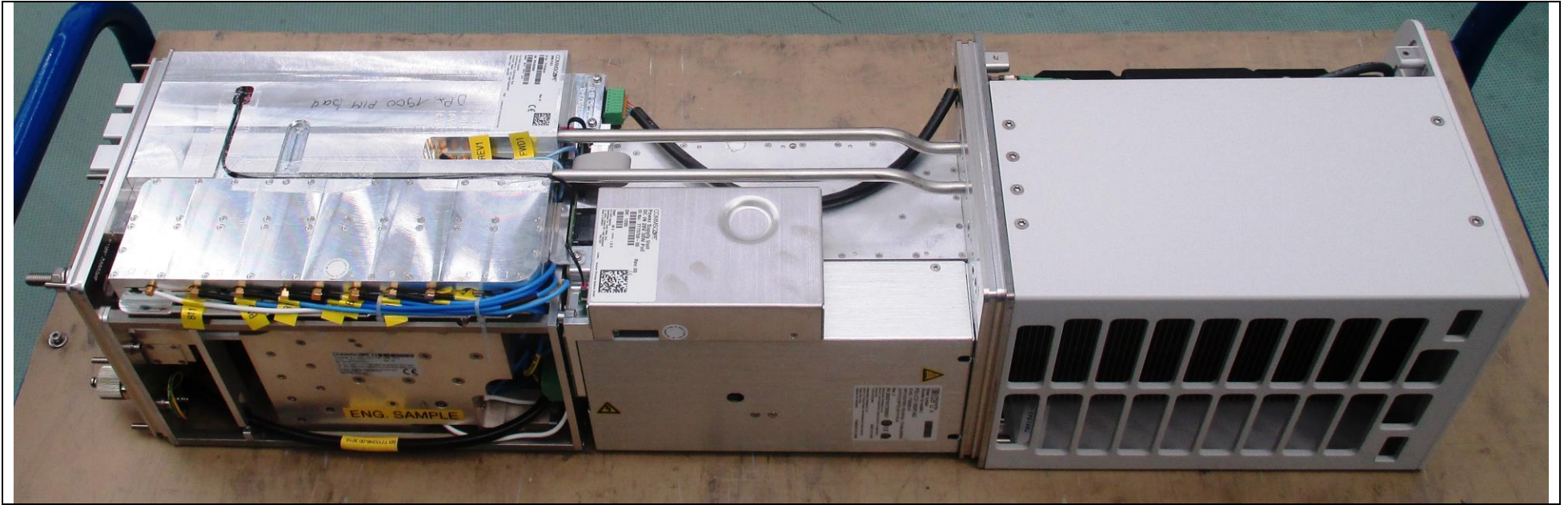


Amplifier Section

Fan Section

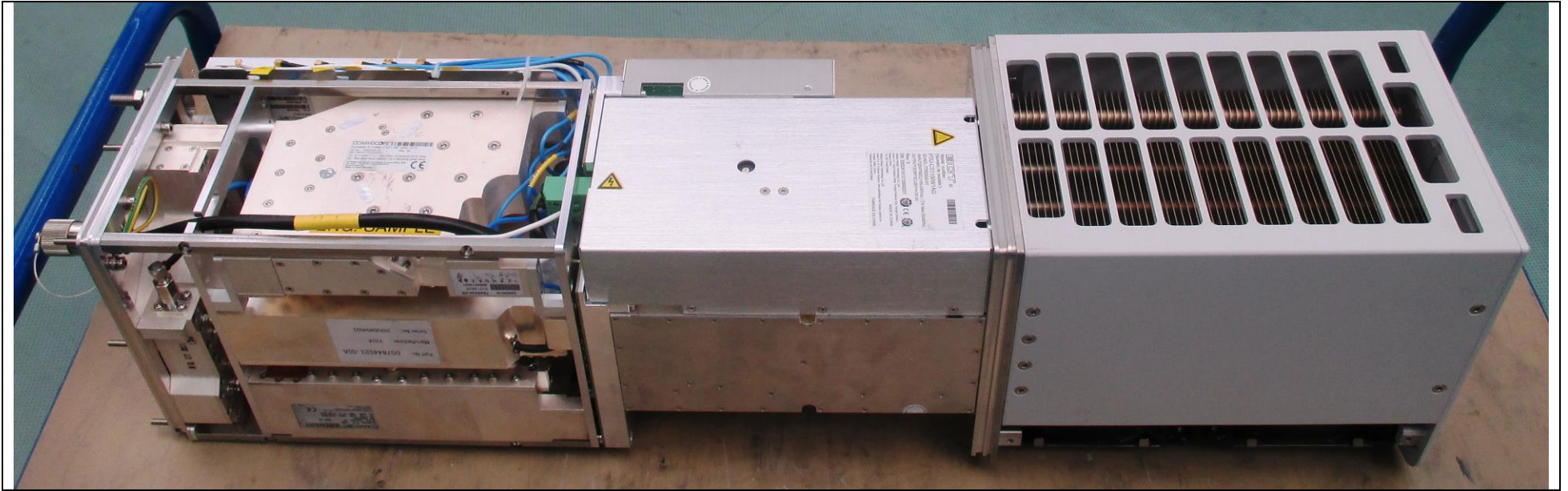


Duplexer



SPM (Signal Processing Modul) & RFM (Radio Frequency Modul)

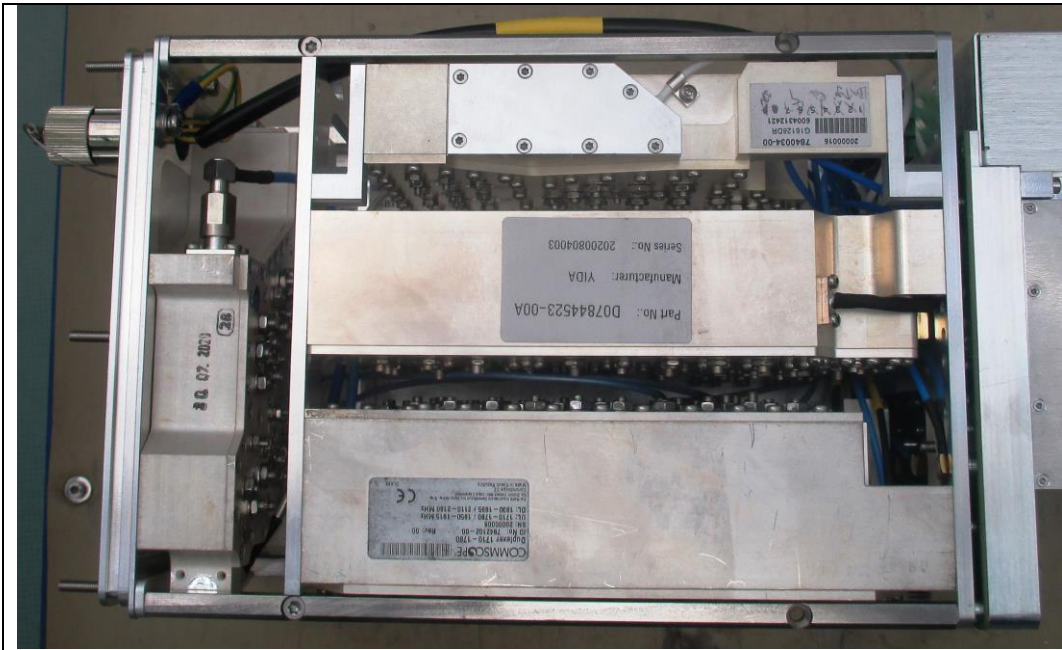
PSU DC in 28V



Power Supply Unit



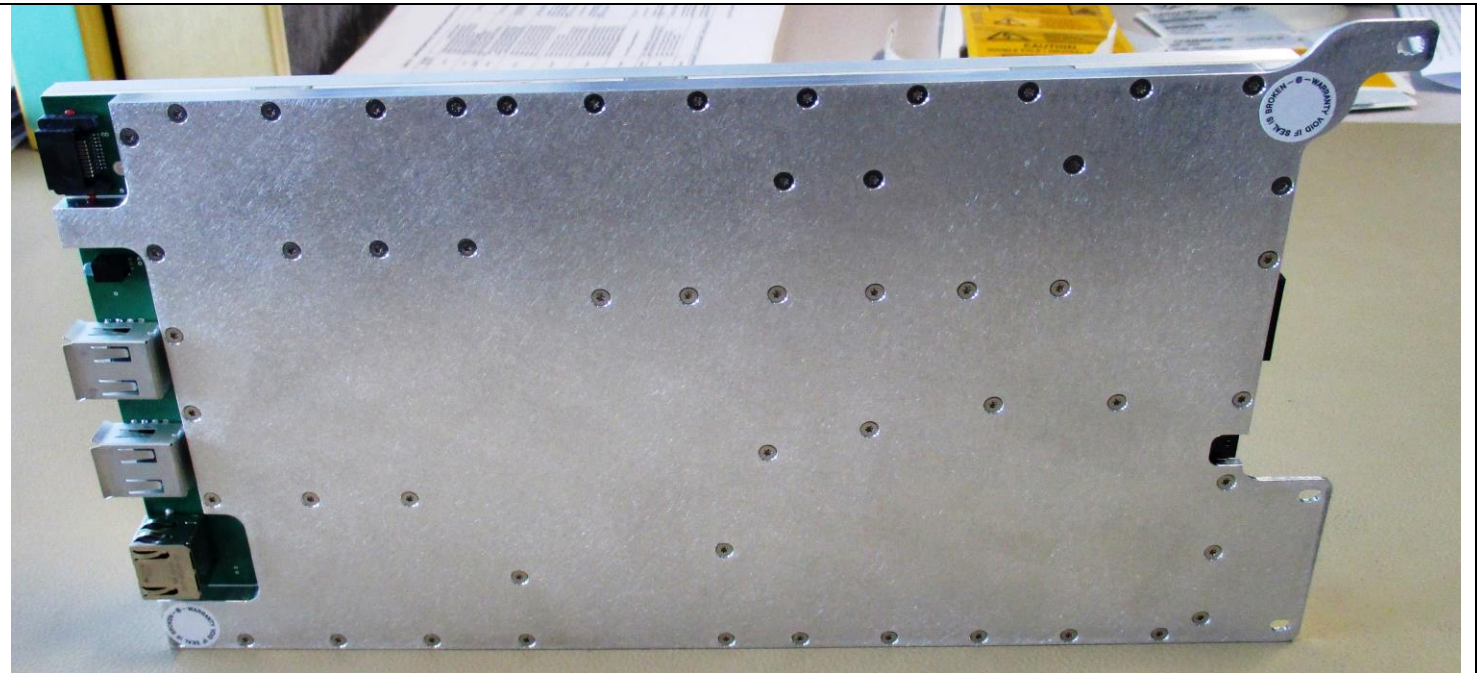
Heat Sink

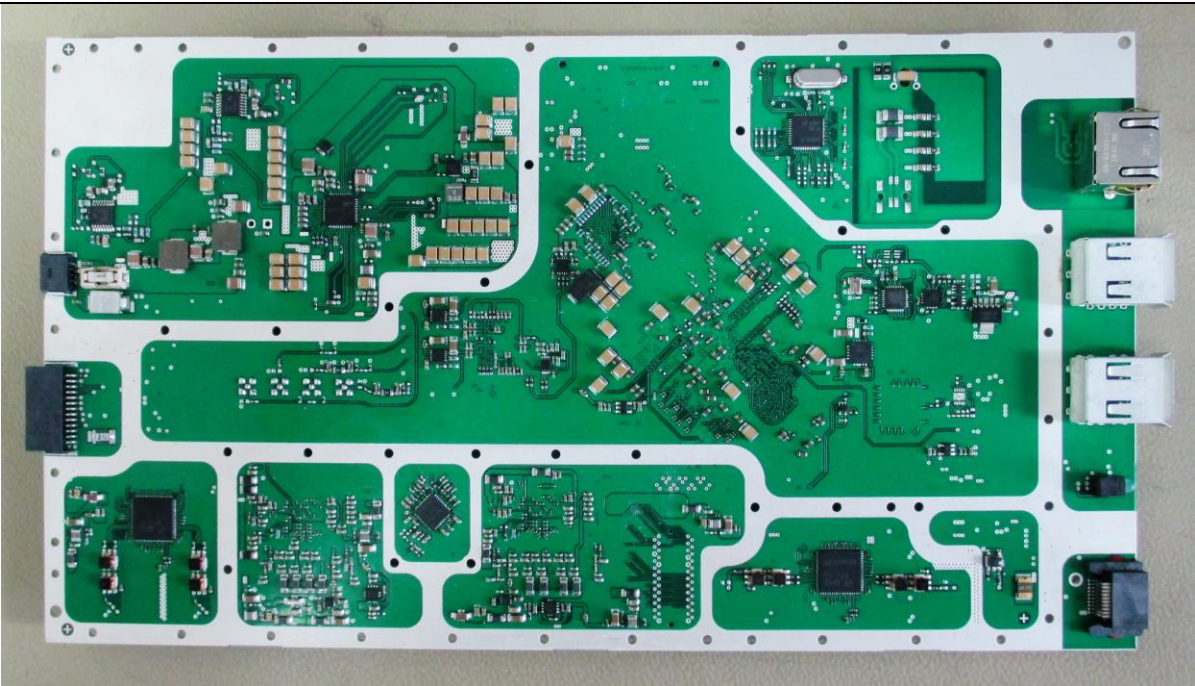
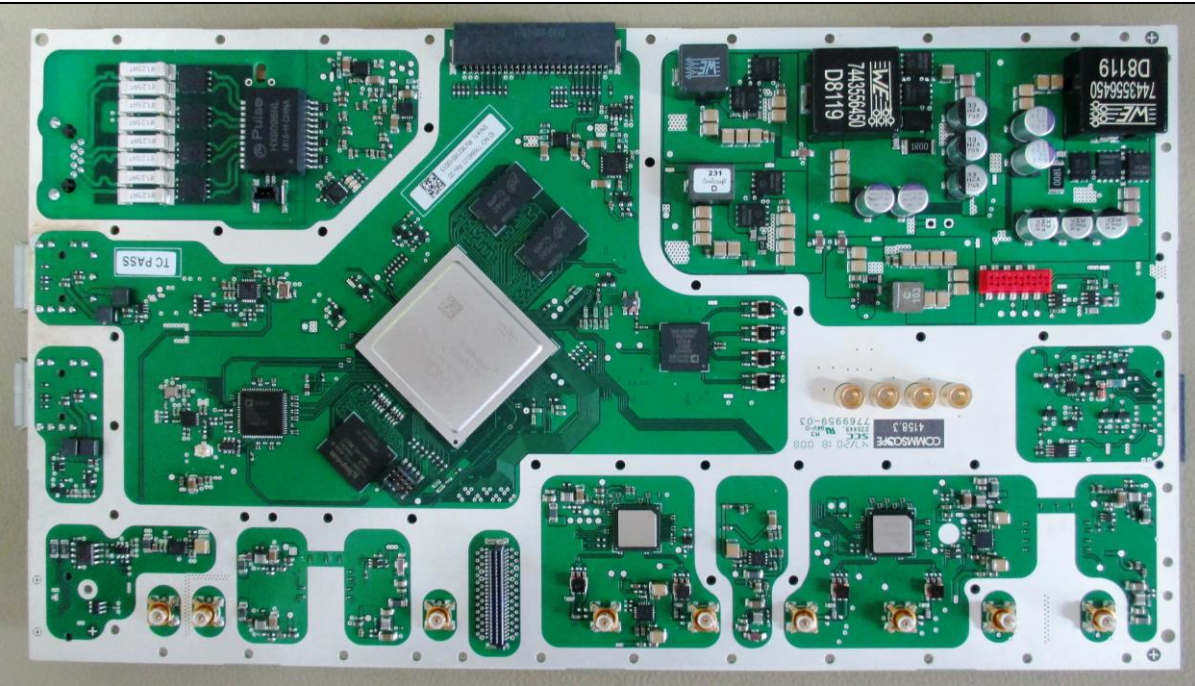


Duplexer

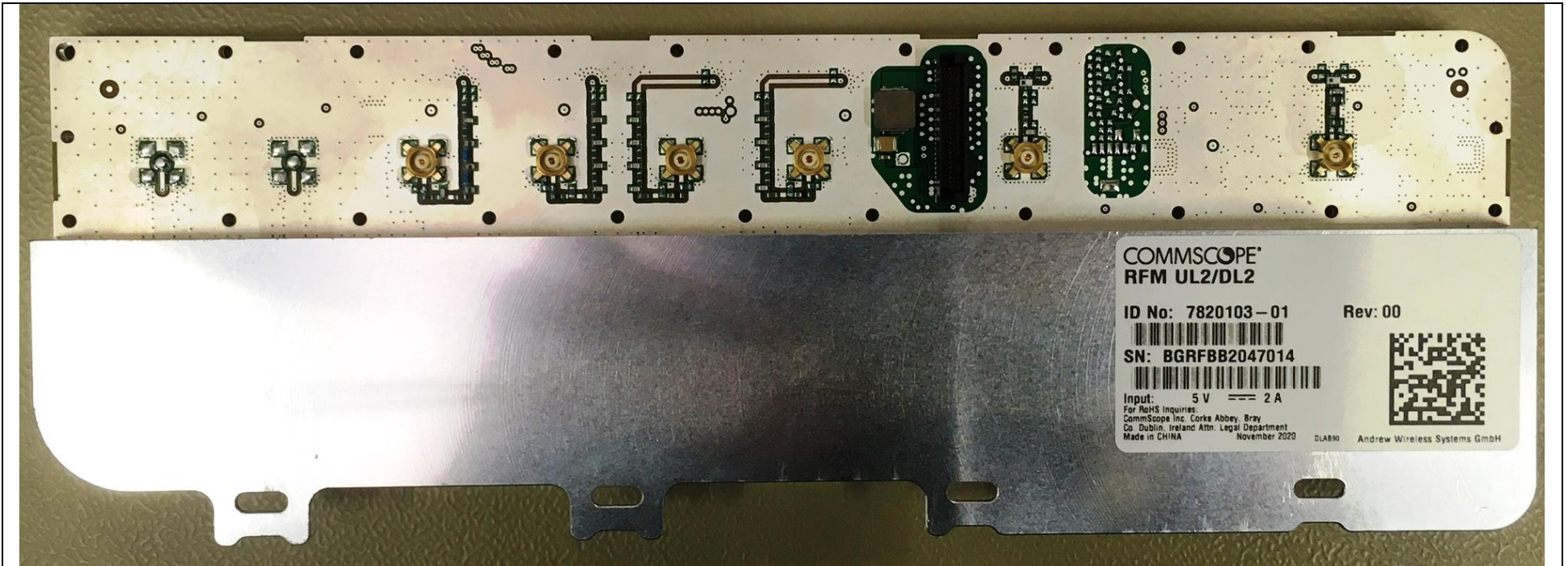
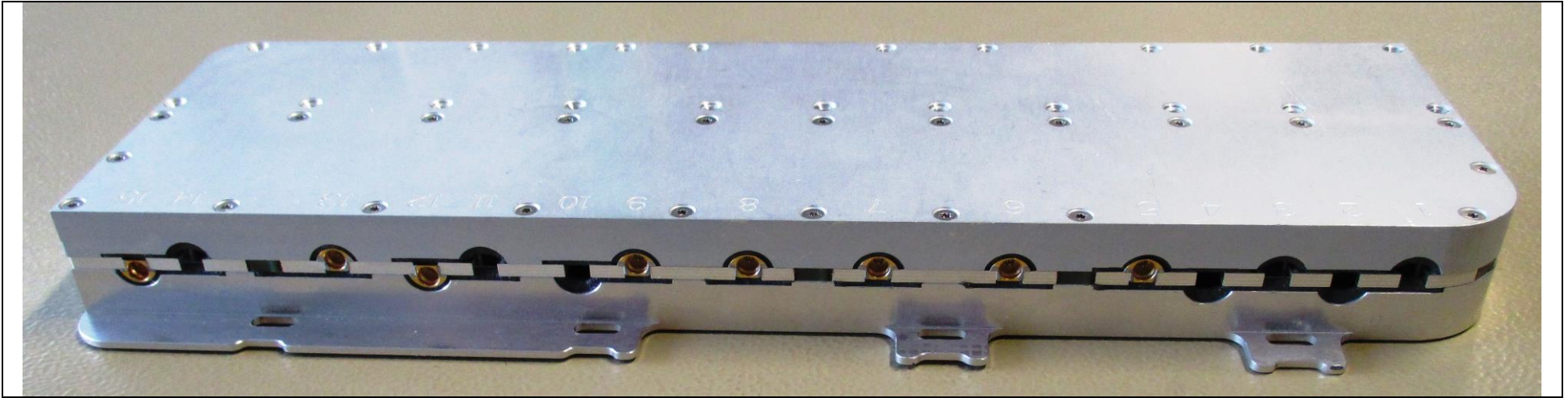
Front Flange

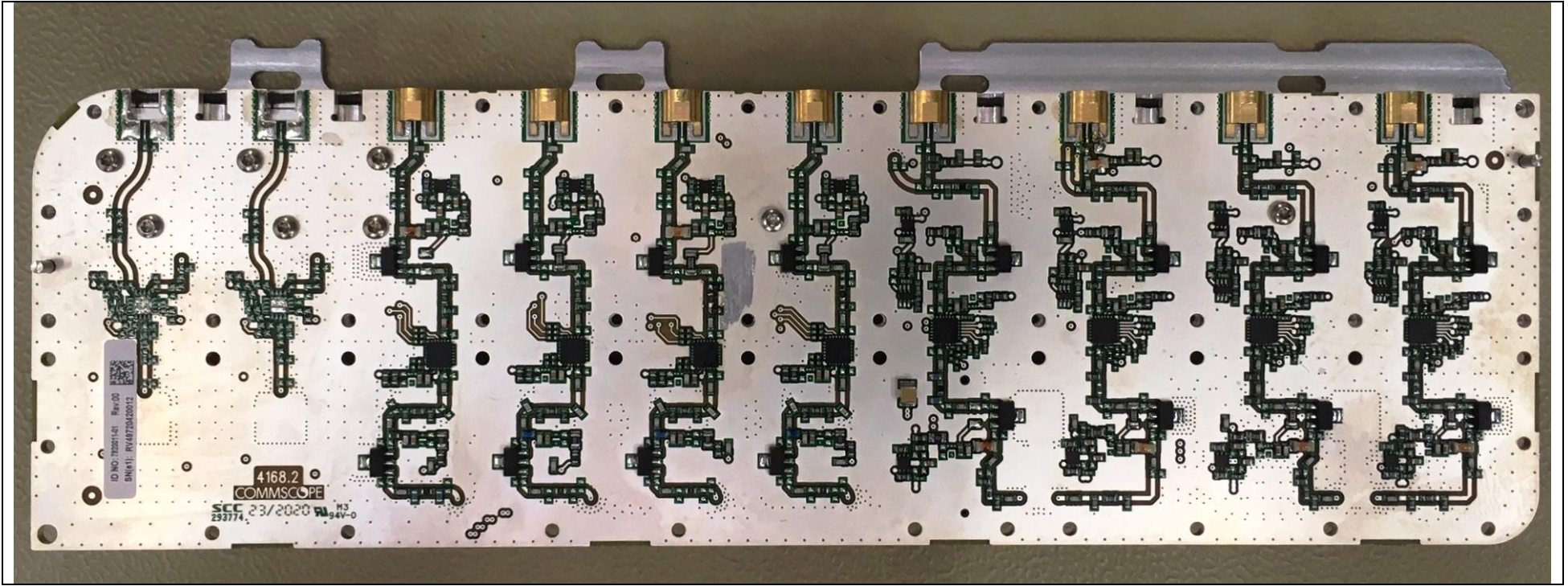
SPM F1/C1 7773756-00

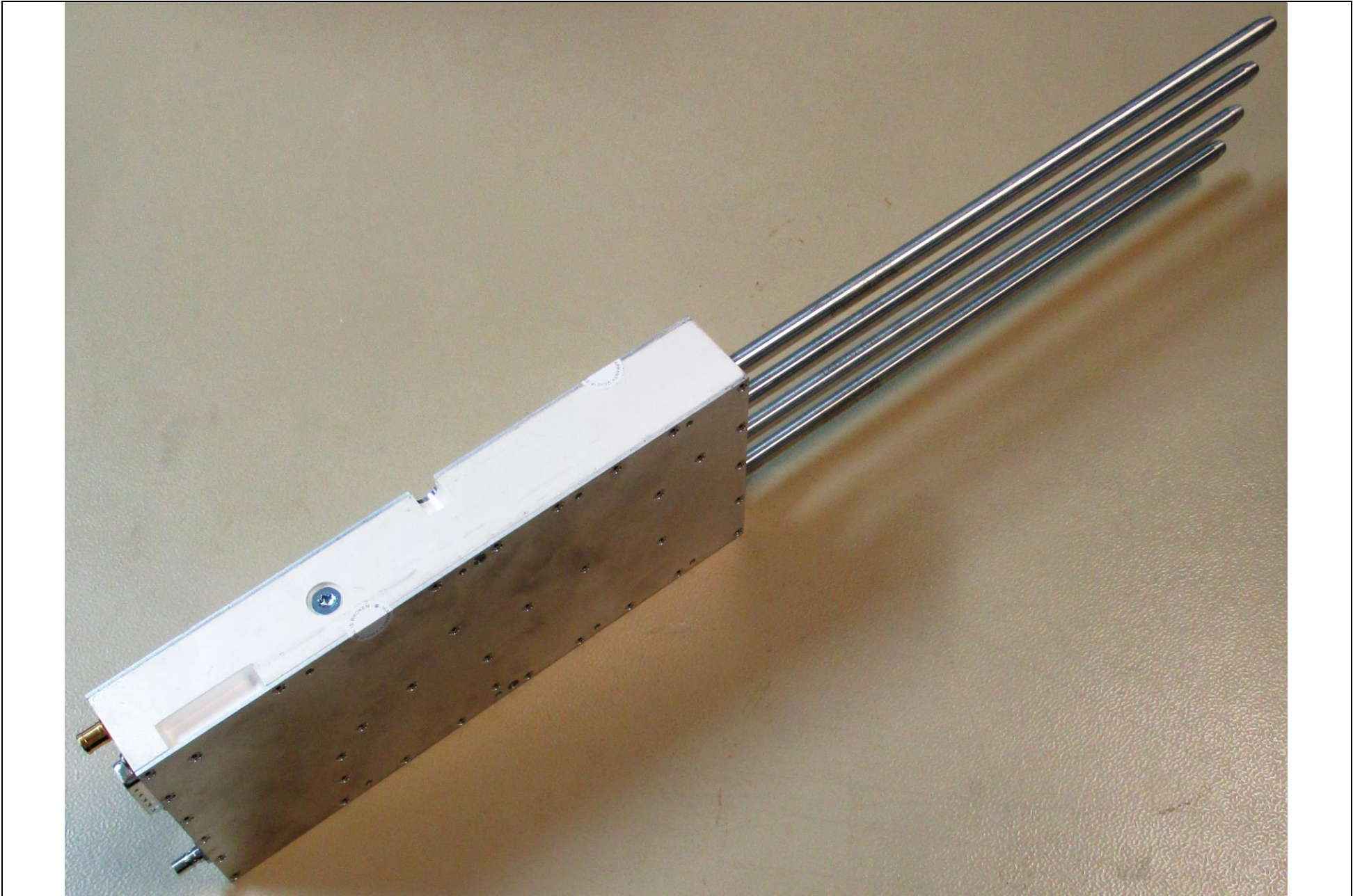


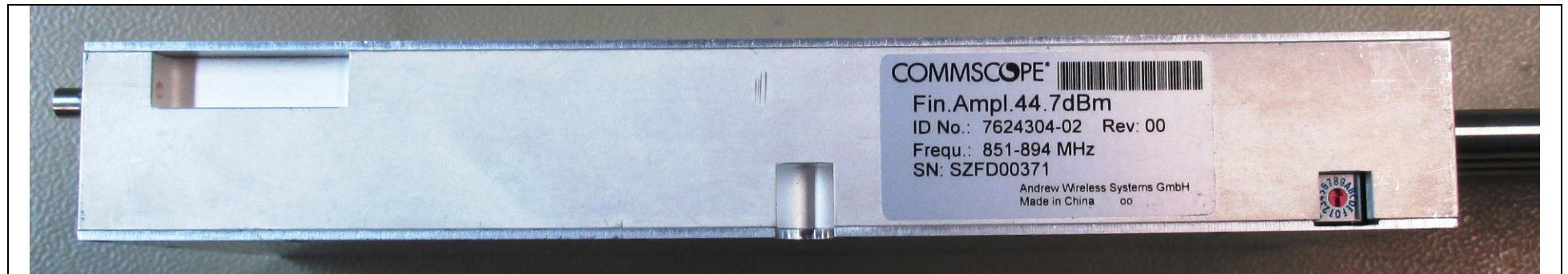
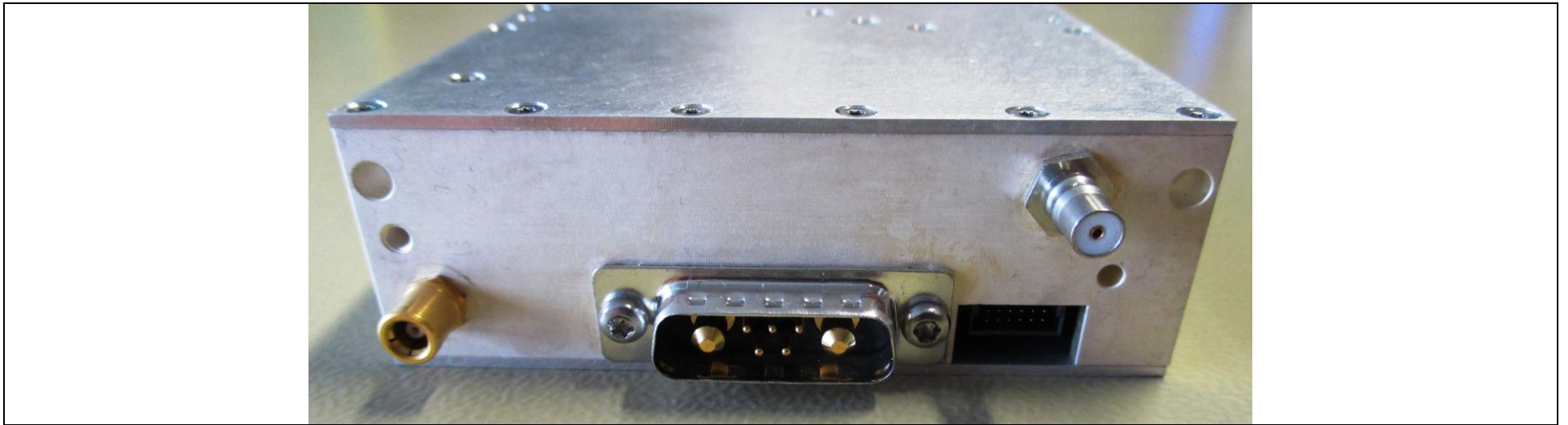
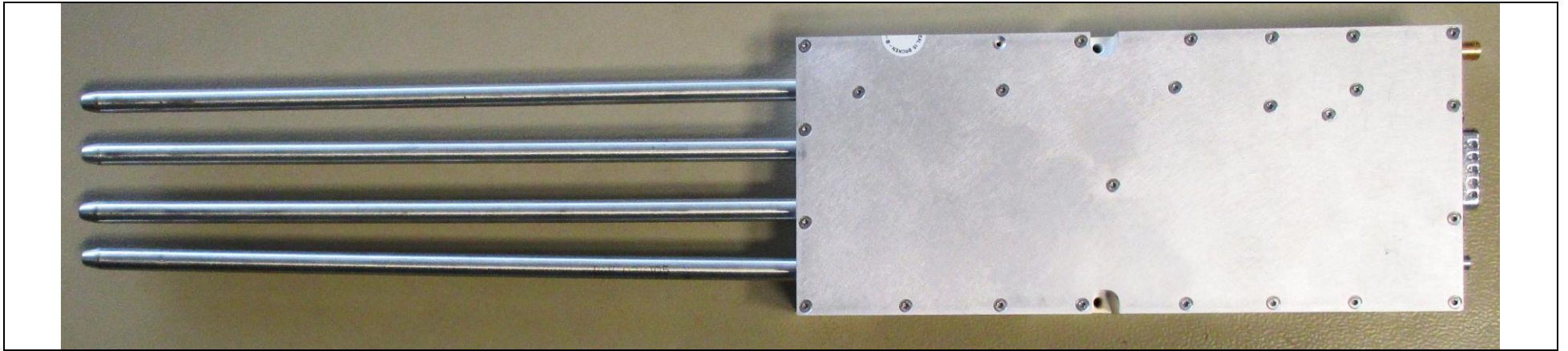


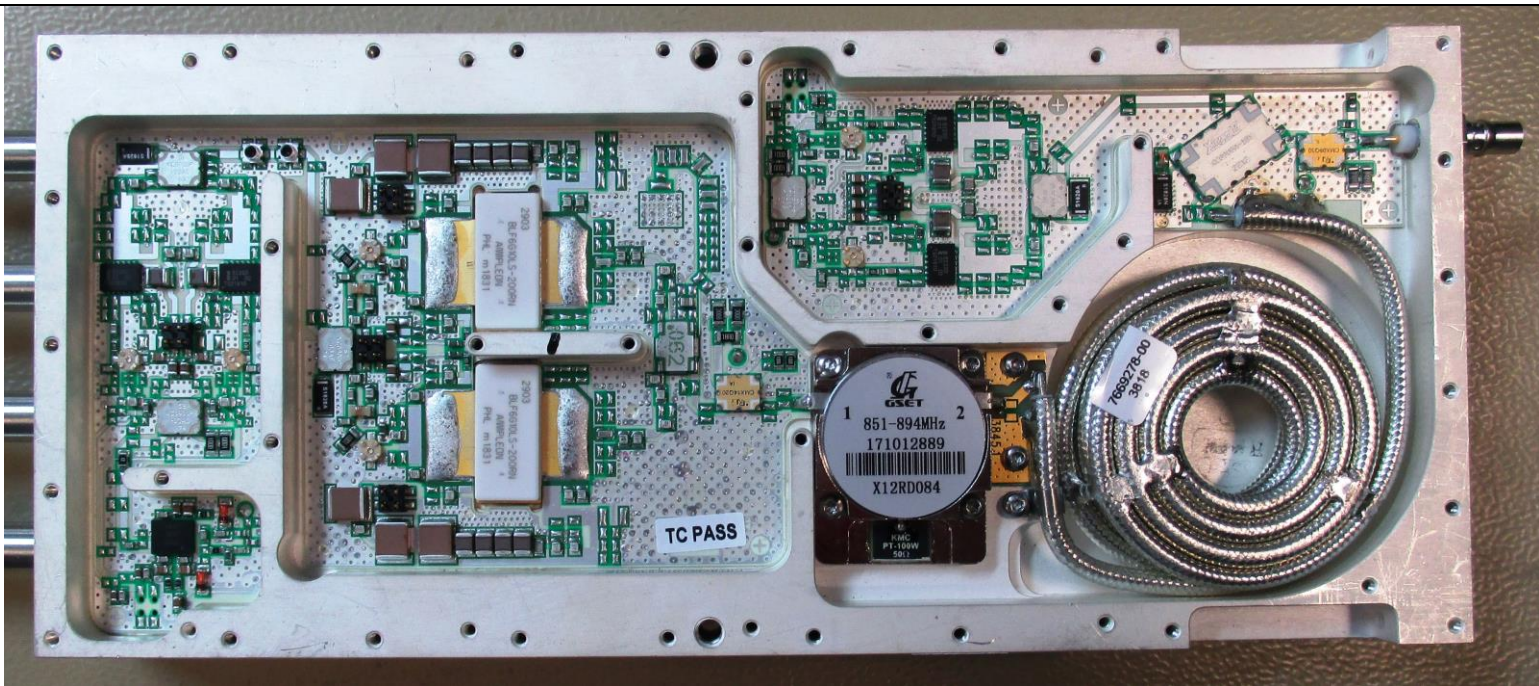
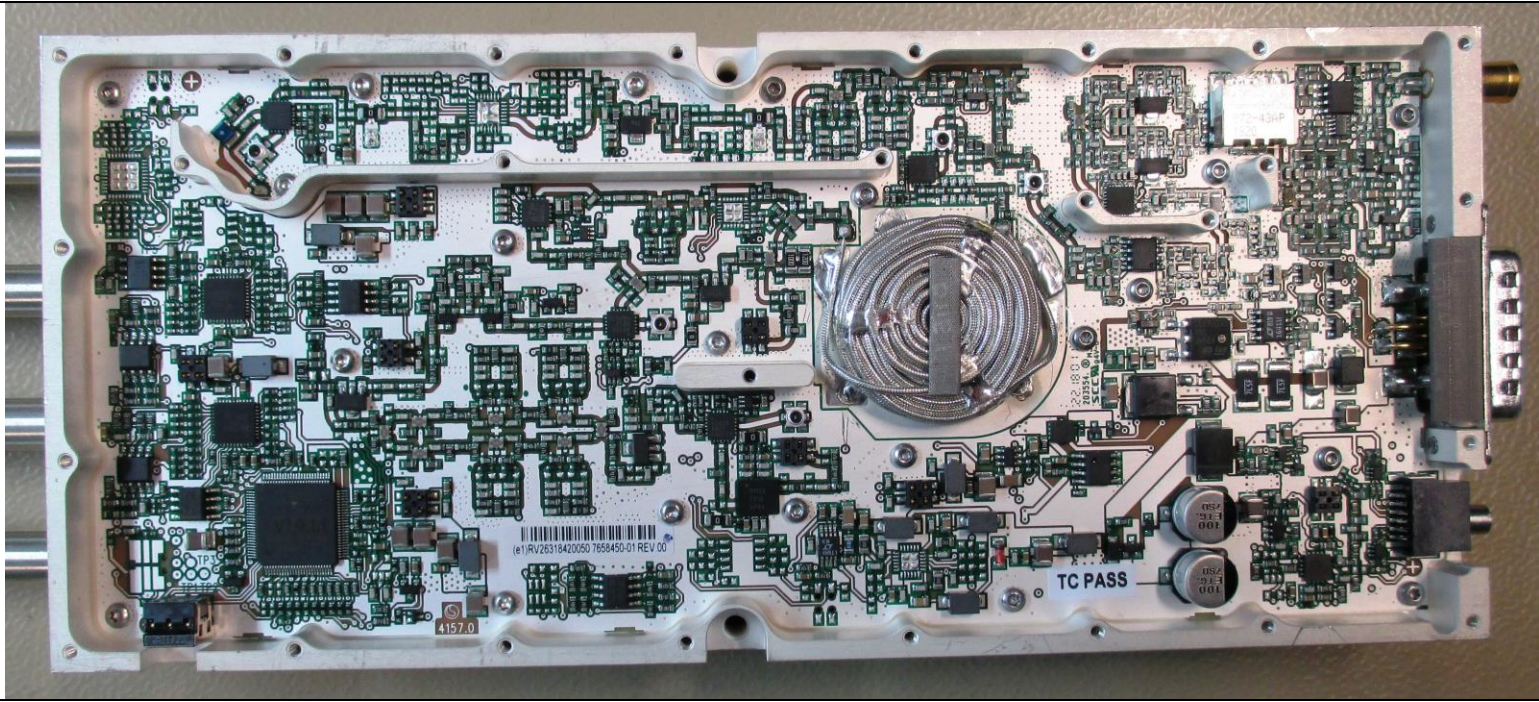
RFM UL2/DL2 7820103-01







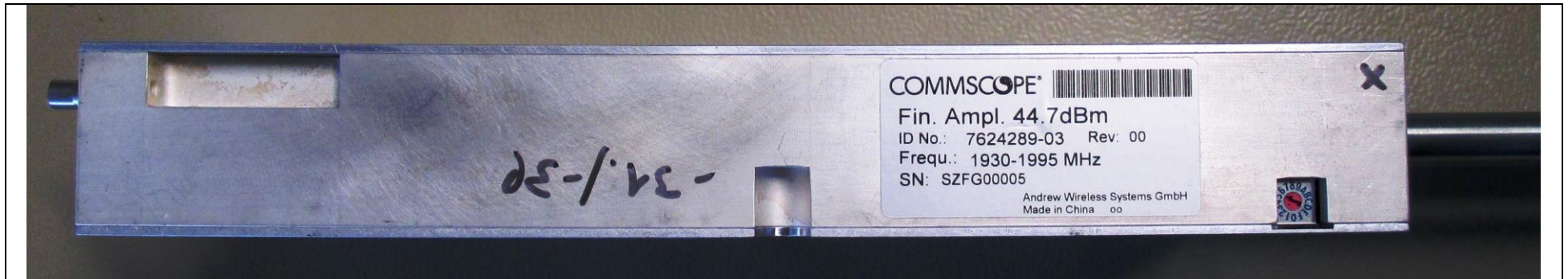




Fin.Ampl.2110-2180 43dB 7713118-01



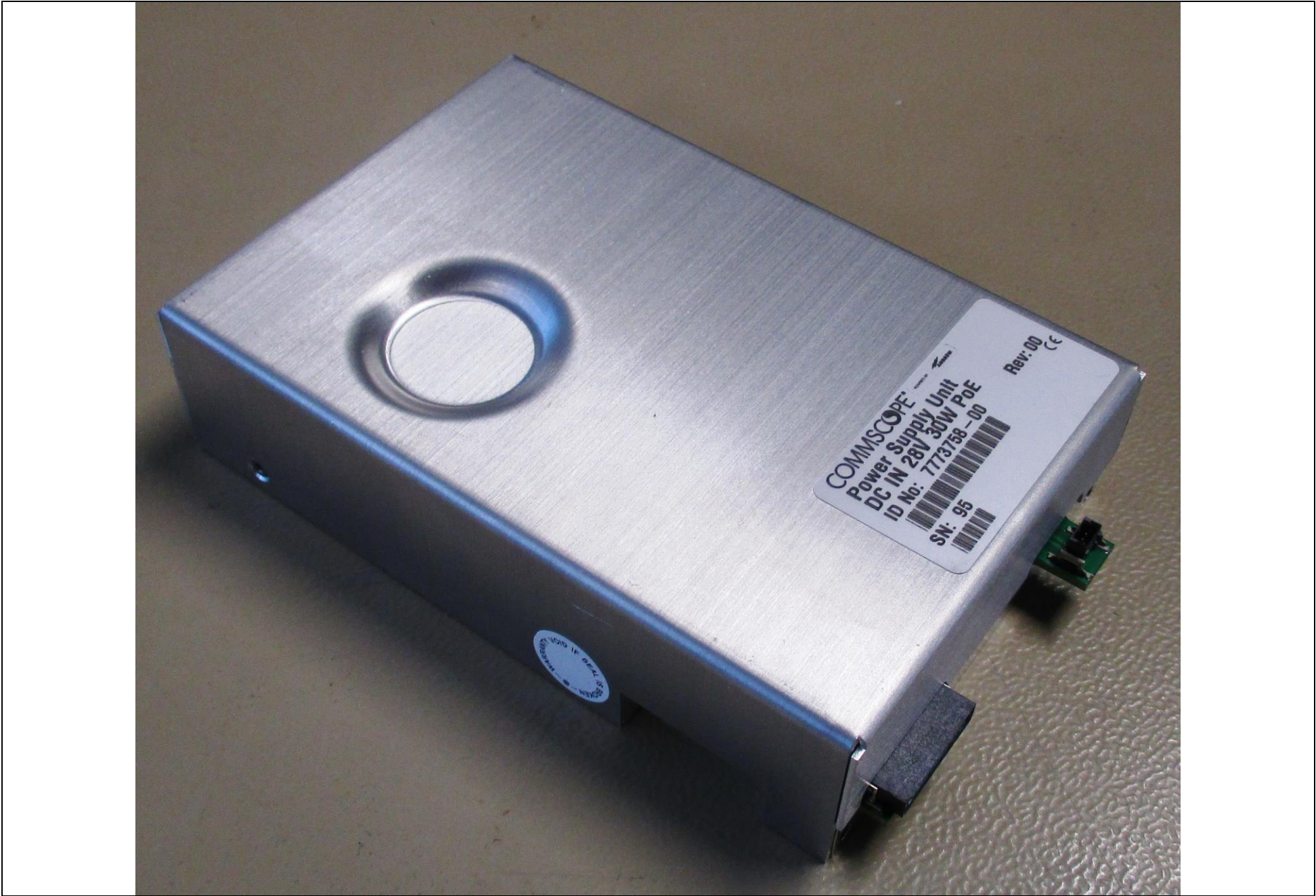
Fin.Ampl.1930-1995 43dB 7624289-03

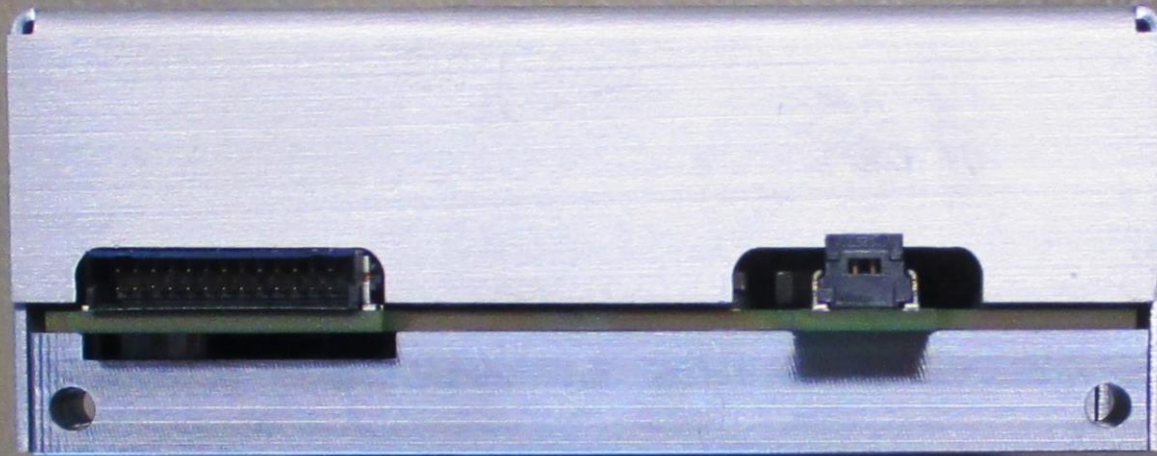


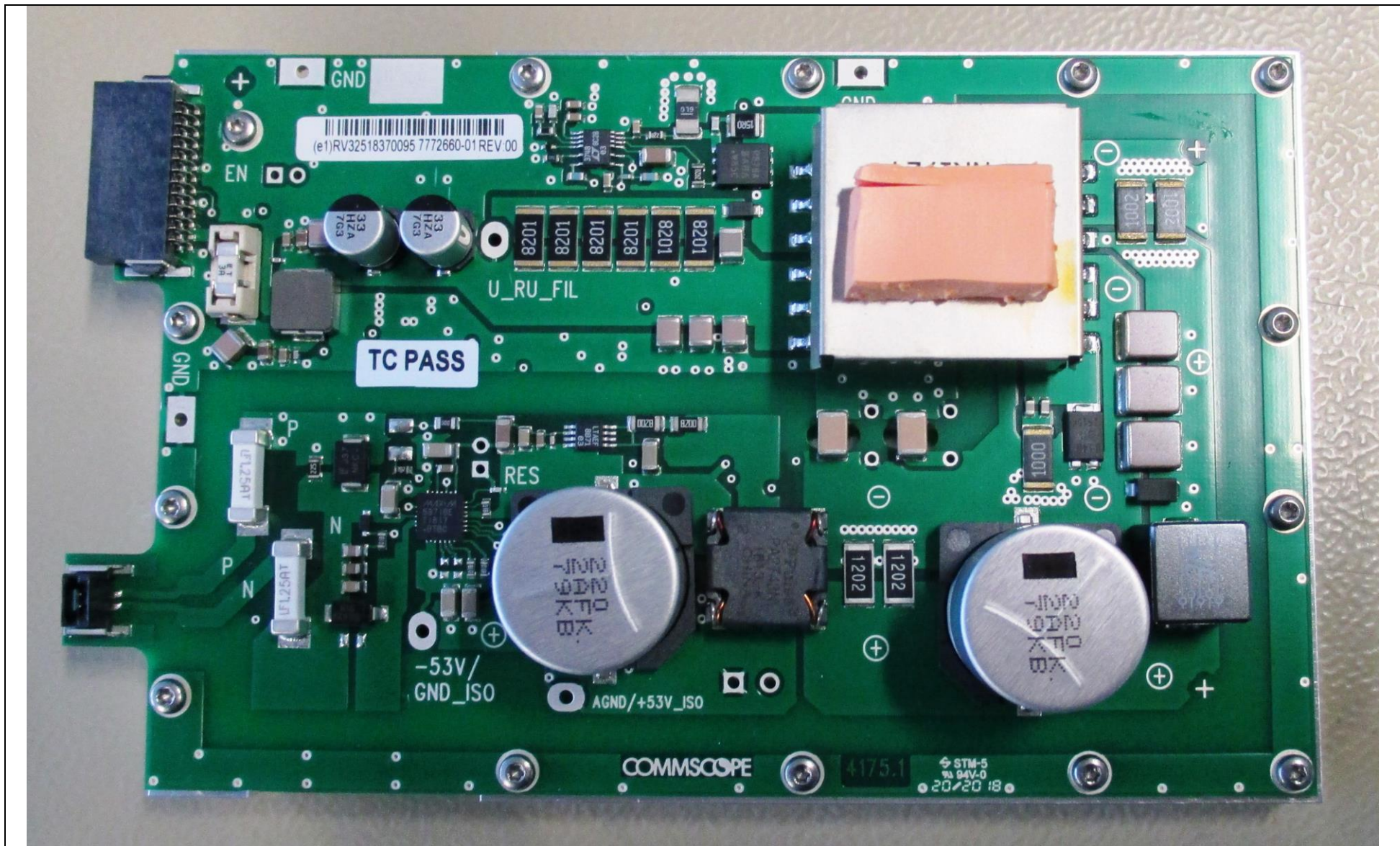
Fin.Ampl.2620-2690 43dB 7624308-03



Power Supply Unit DC IN 28V 30W PoE 7773758-00







(e1)RV32518370095 7772660-01 REV.00

TC PASS

U_RU_FIL

-53V/
GND_ISO

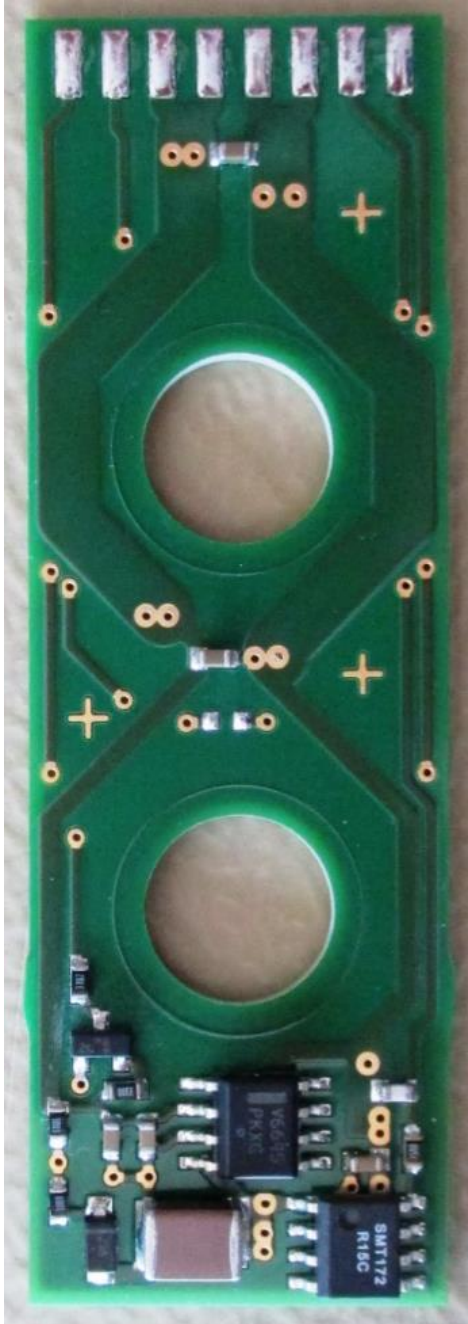
AGND/+53V_ISO

COMMSCOPE

4175.1

STM-5
94V-0
20/20 18

PCB P3683 Fan Unit Board M2-Cab 7659273-01



PCB P3700 PA-AddrLineAdaptBrd 7661367-00

