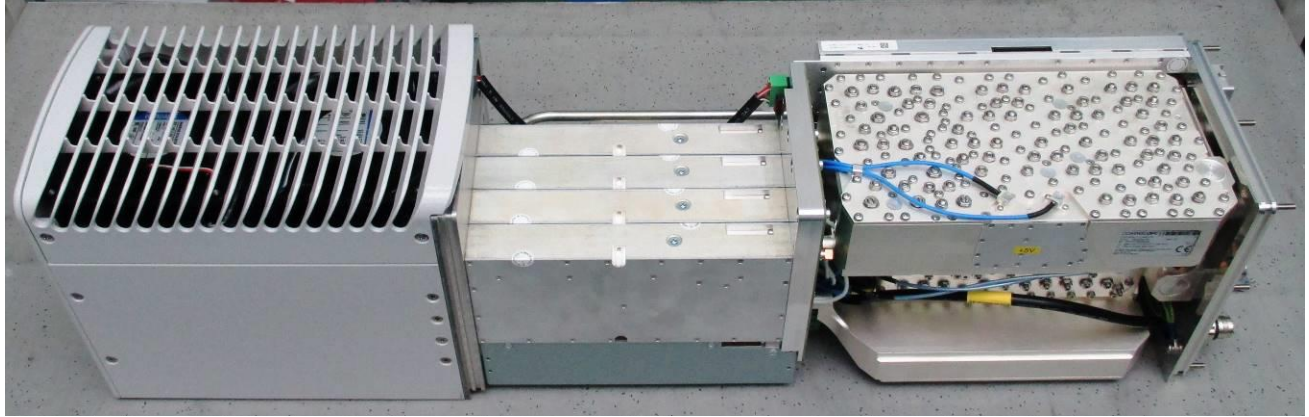
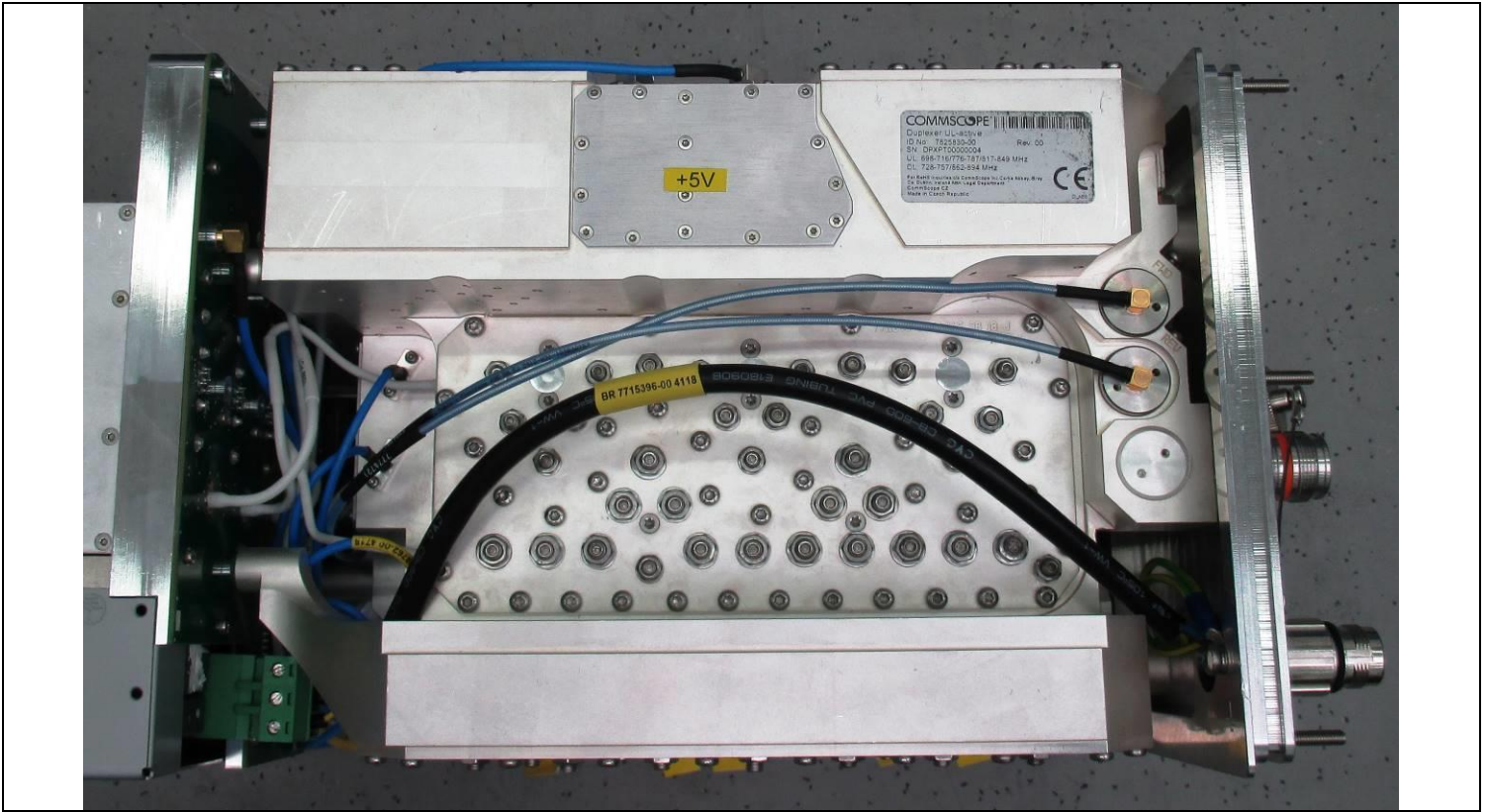


Internal Photos CAP H 7E/80-85/17E/19

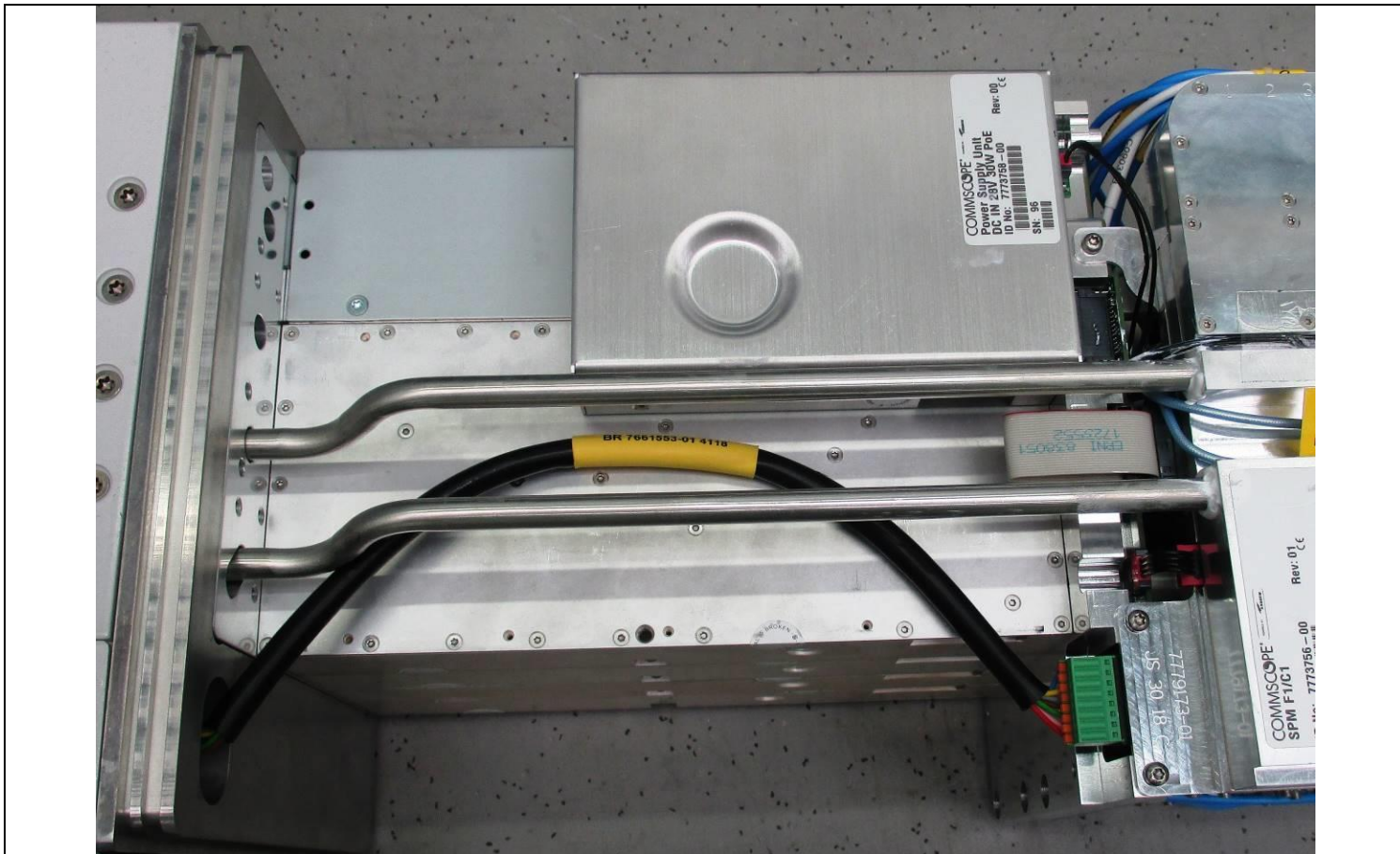




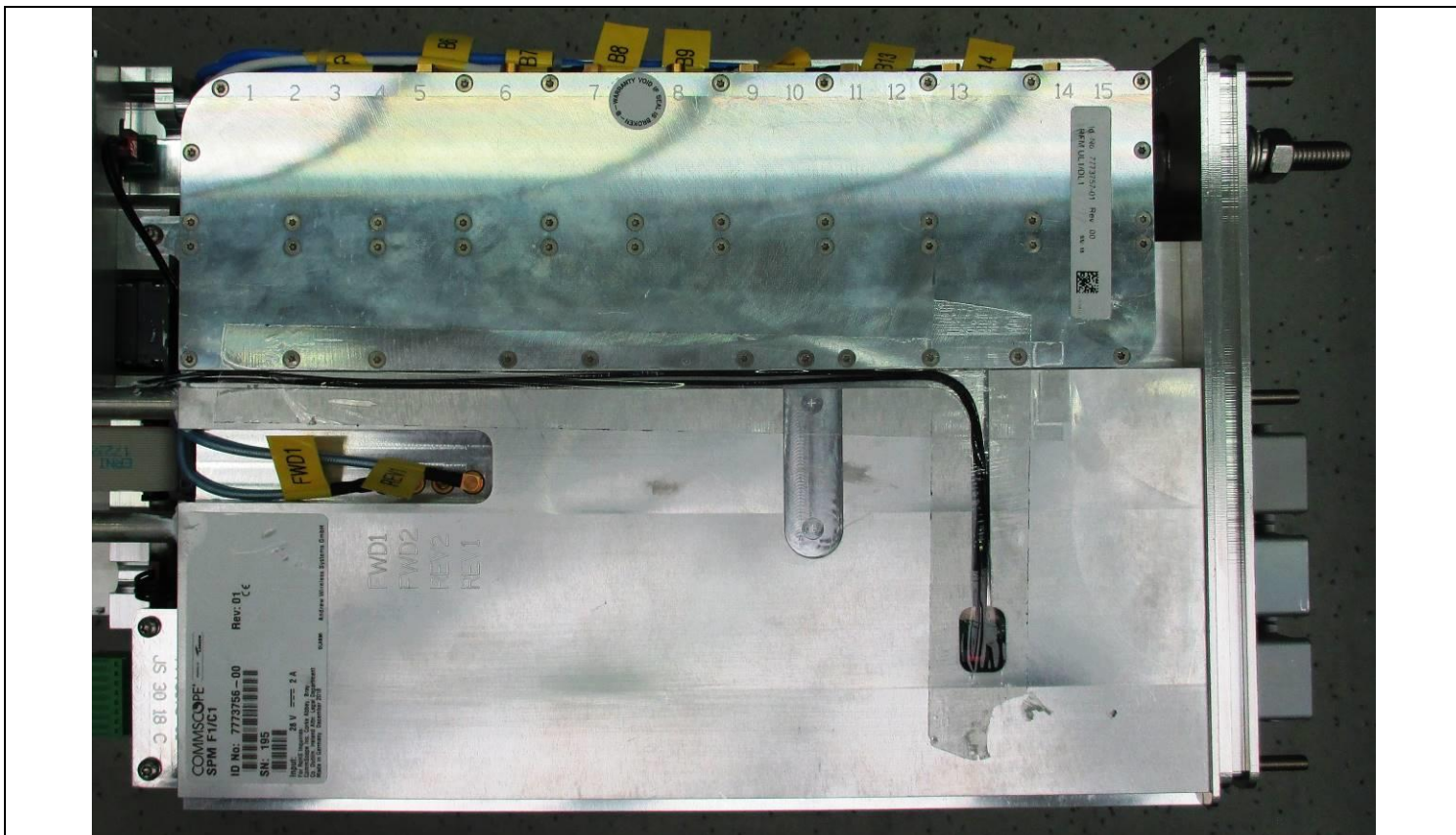
Duplexer



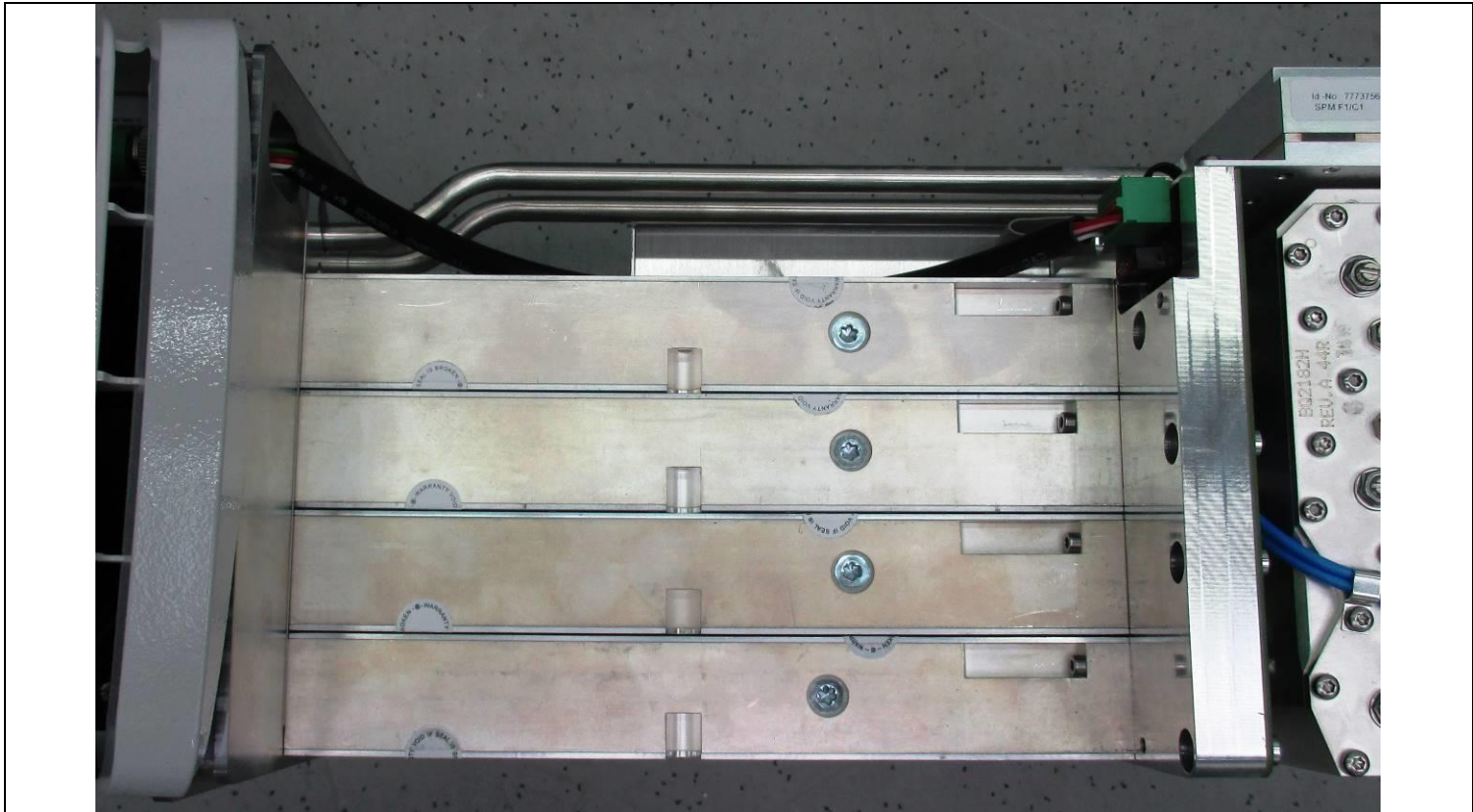
PSU



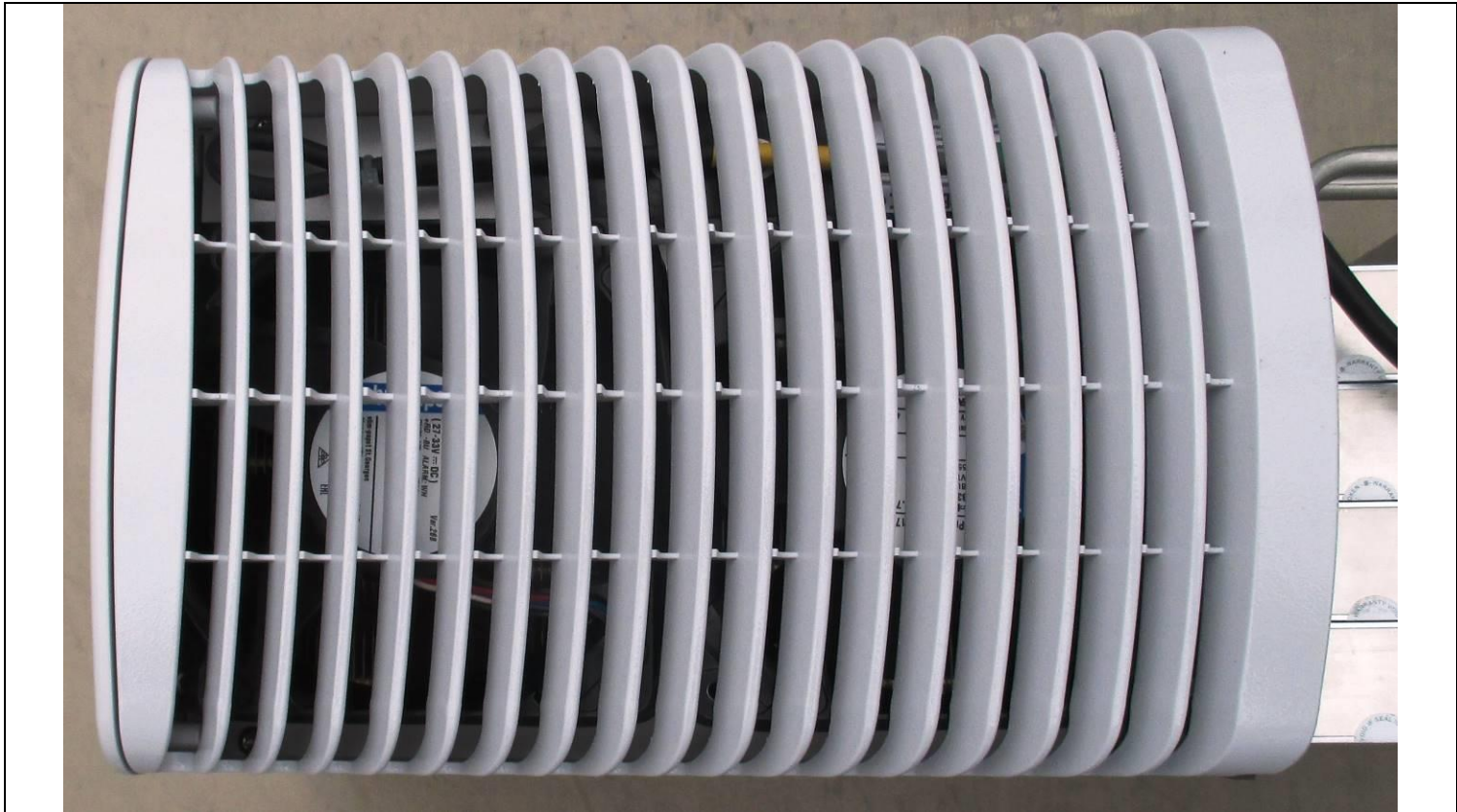
PSU PoE



SPM & RFM



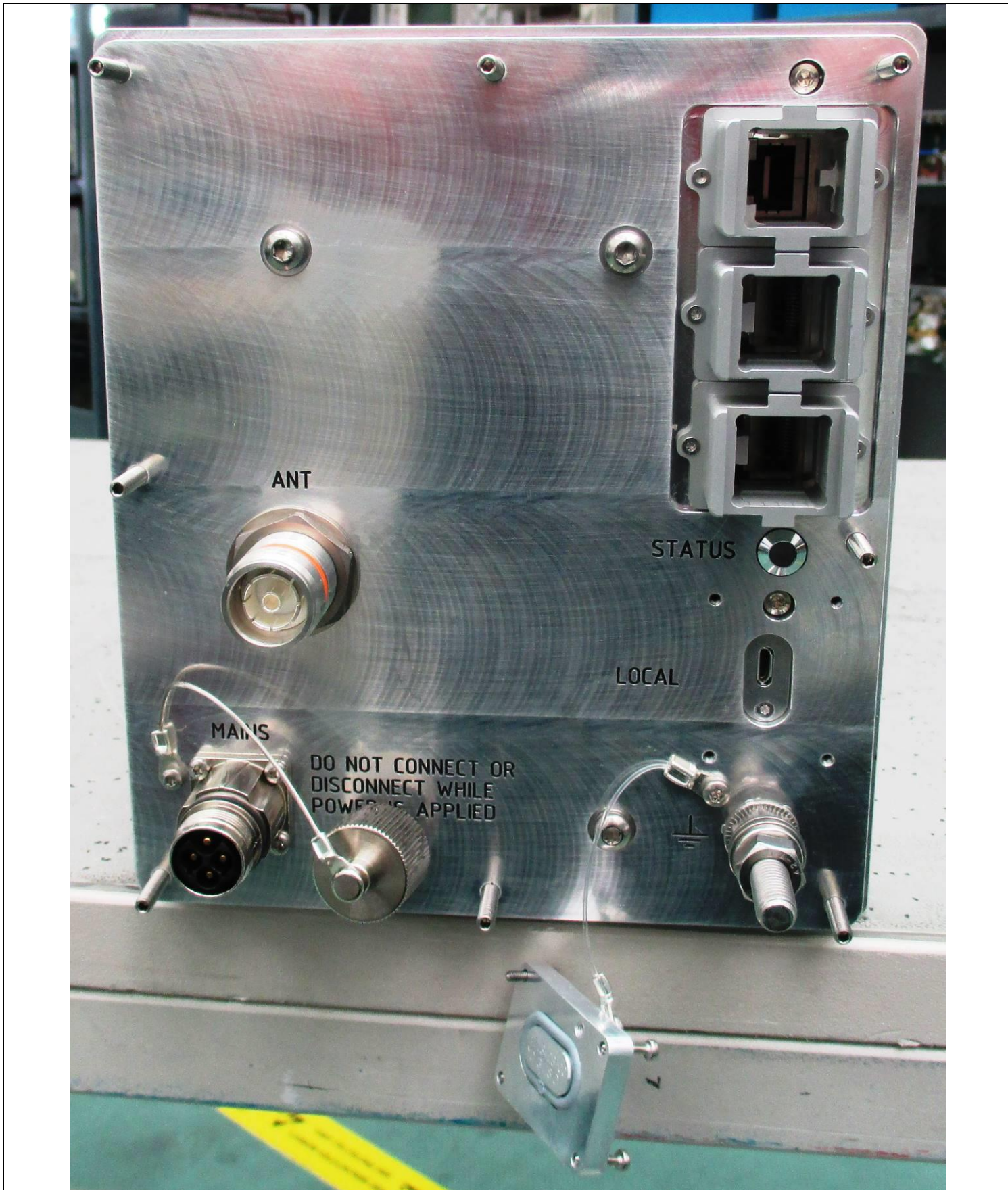
Final Amplifier



Fans

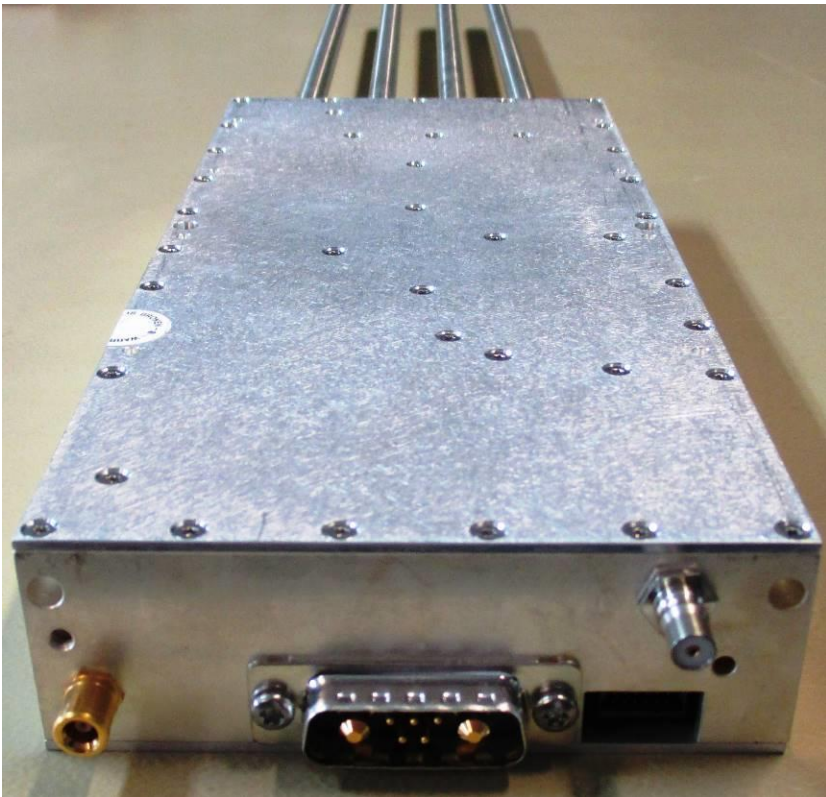
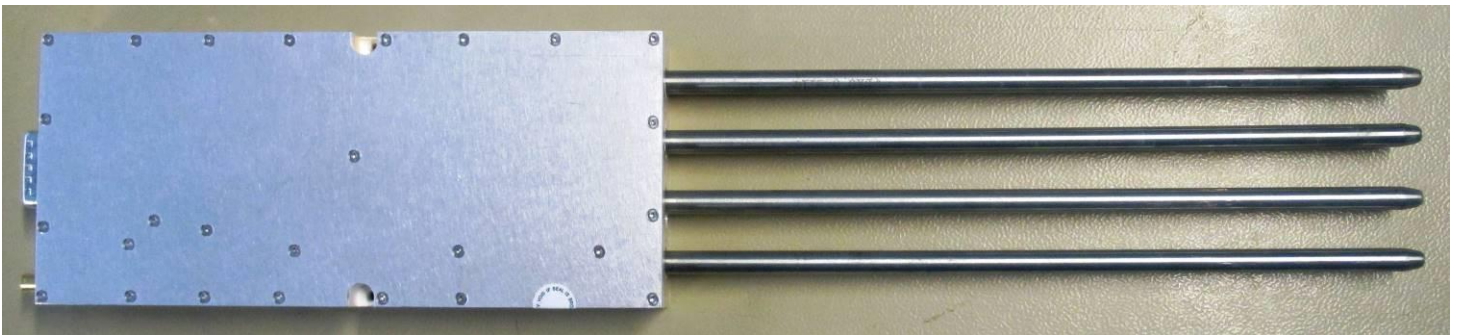
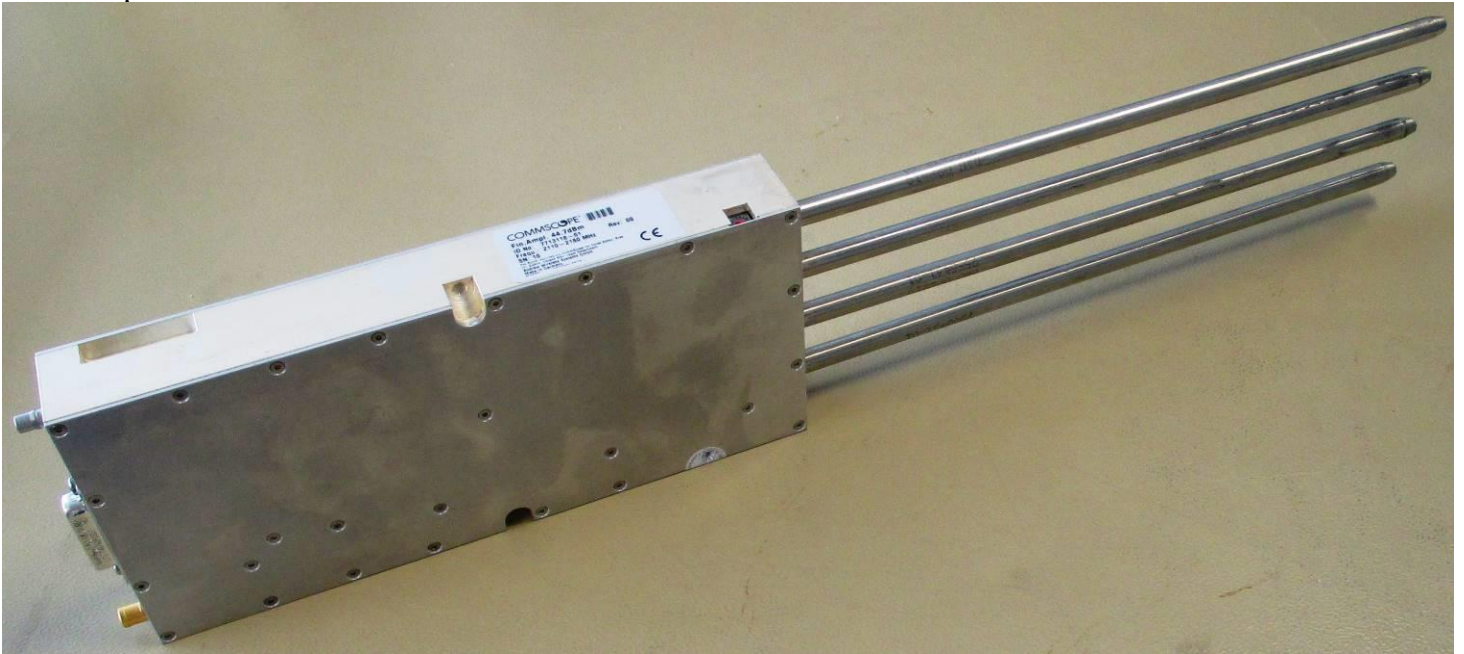


Heat Sink



Front Flange

Final Amplifier

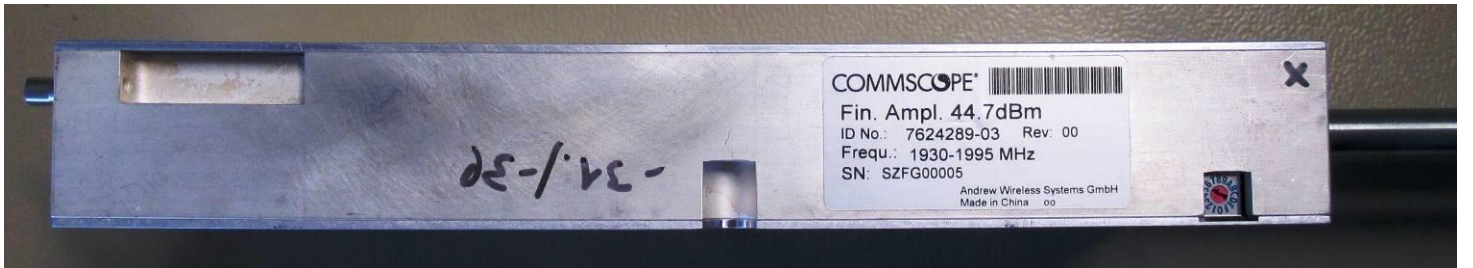




Fin.Ampl.728-768 43dB 7624344-03



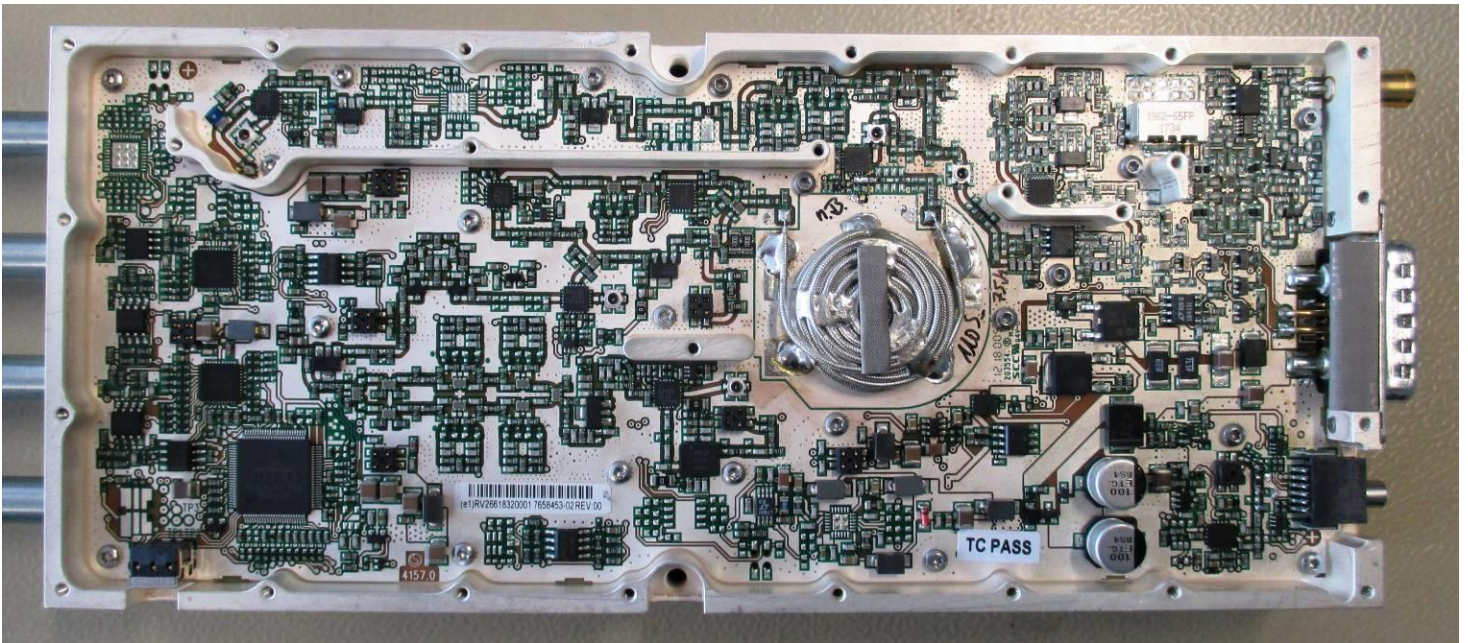
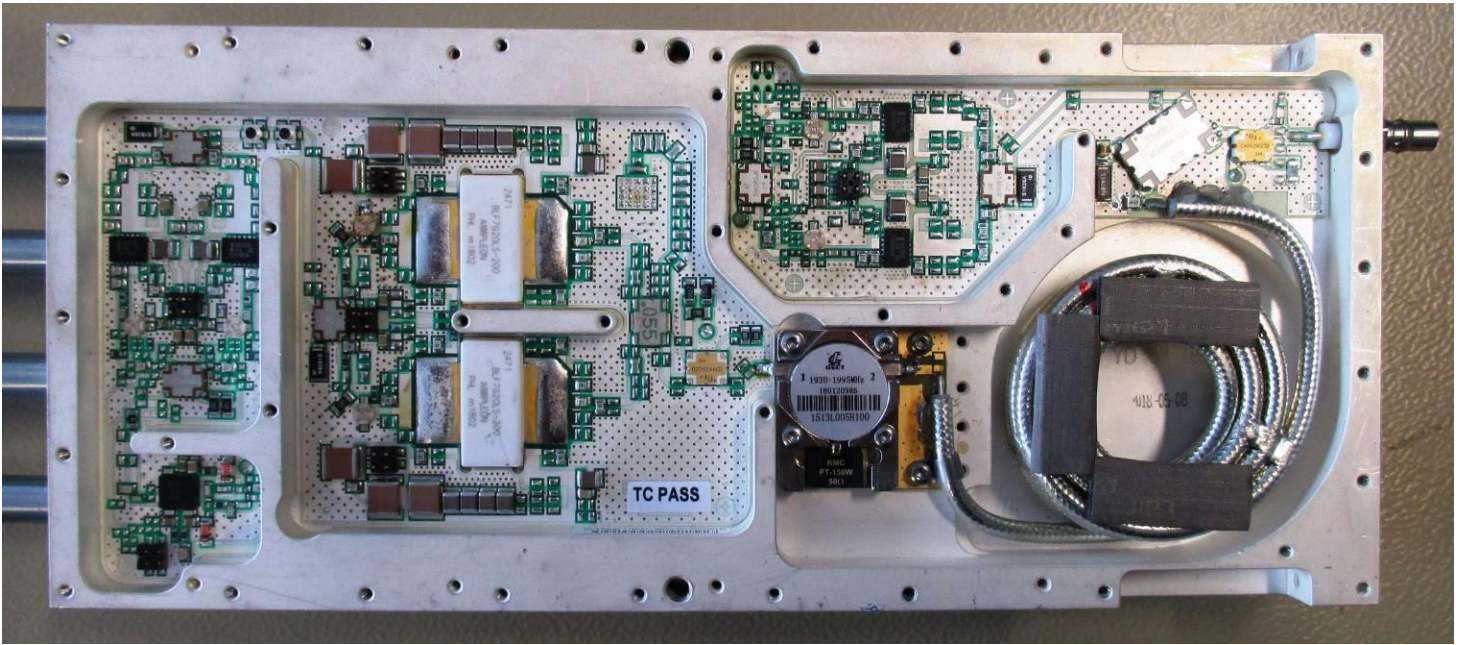
Fin.Ampl.851-894 43dB 7624304-02



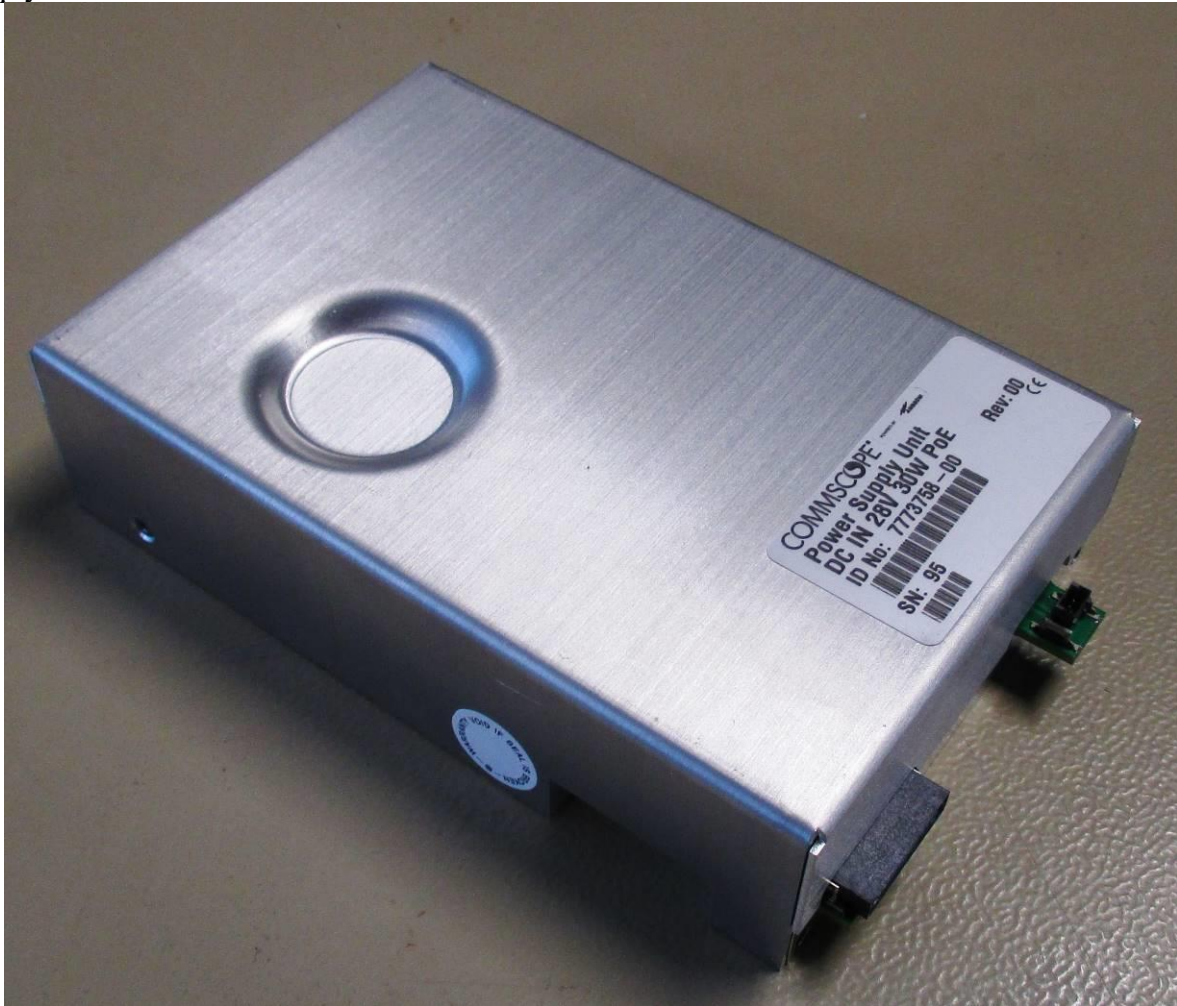
Fin.Ampl.1930-1995 44.7dB 7624289-03

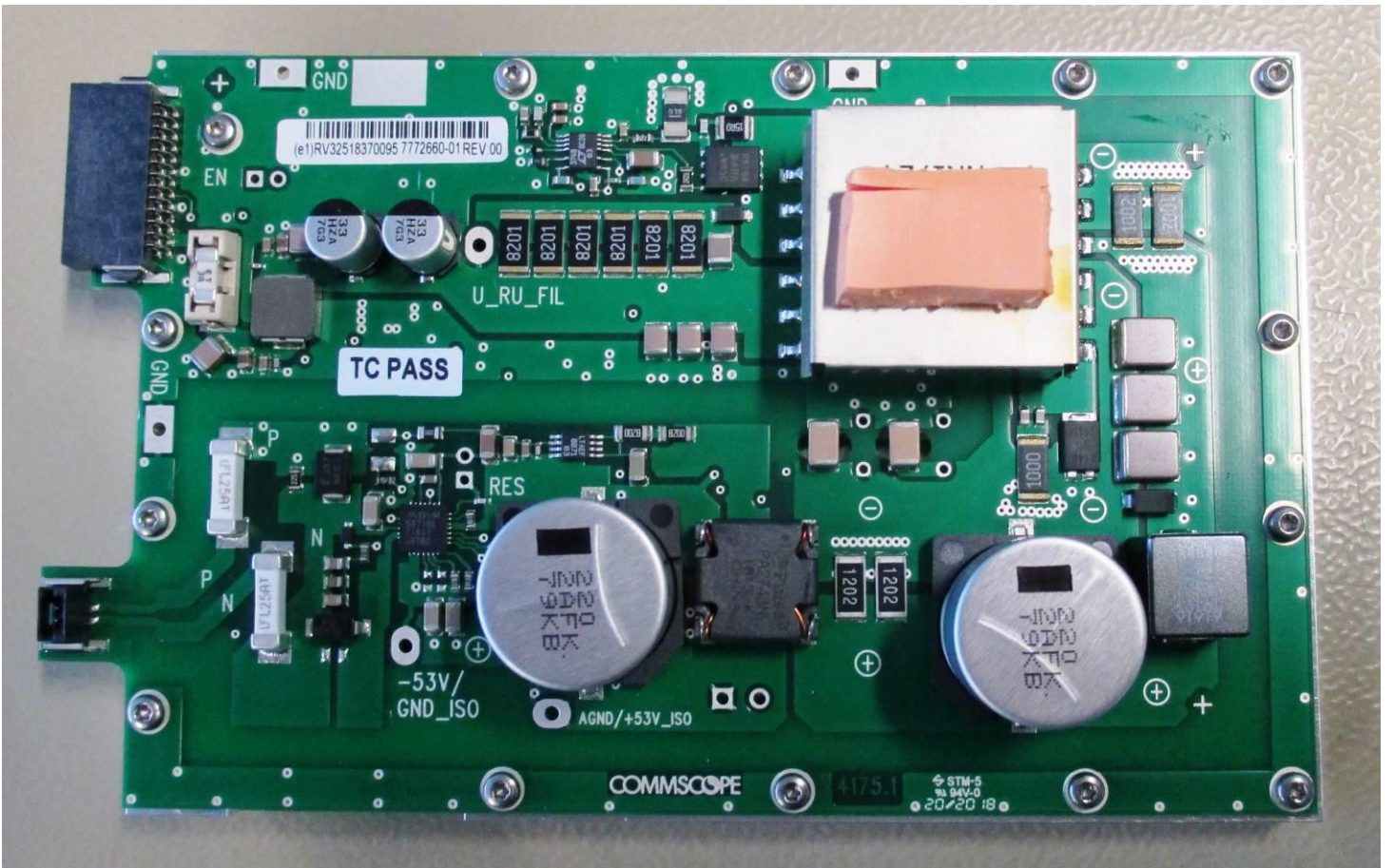


Fin.Ampl.2110-2180 44.7dB 7713118-01



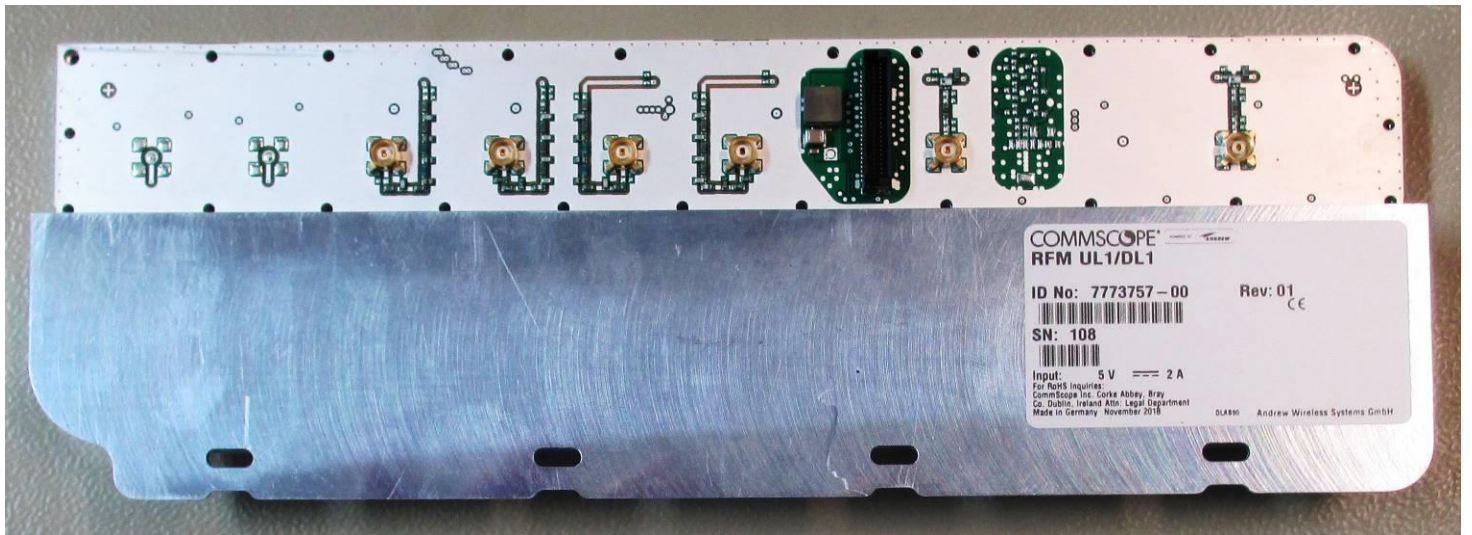
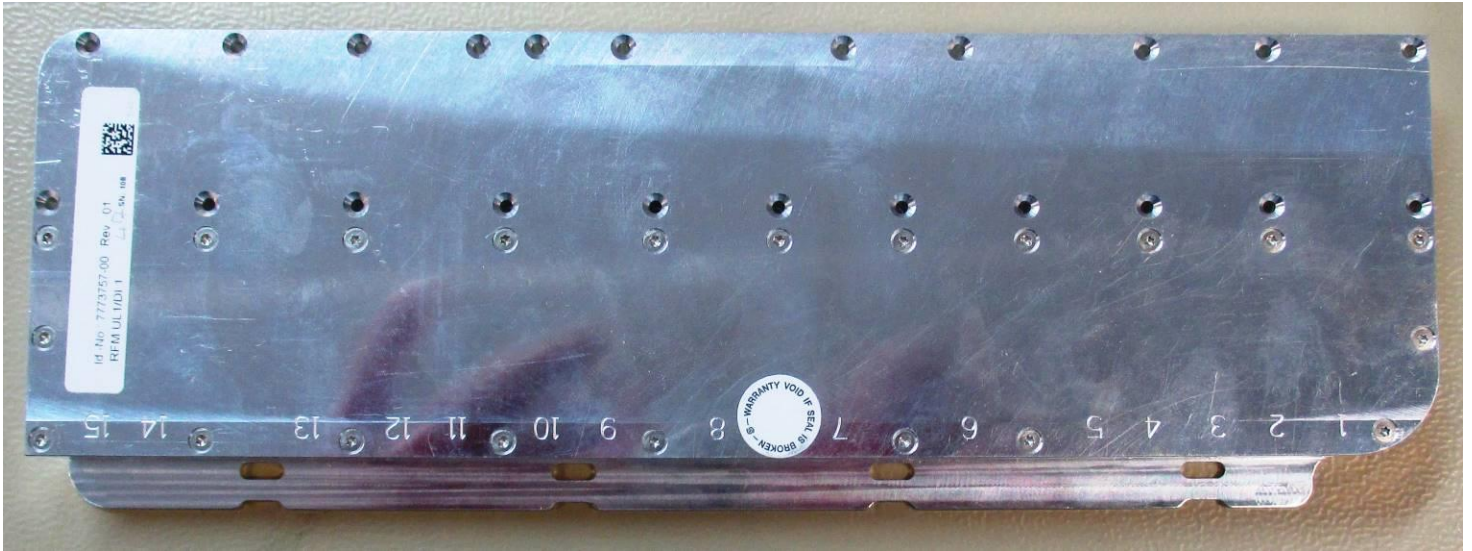
Power Supply Unit DC IN 28V 30W PoE 7773758-00

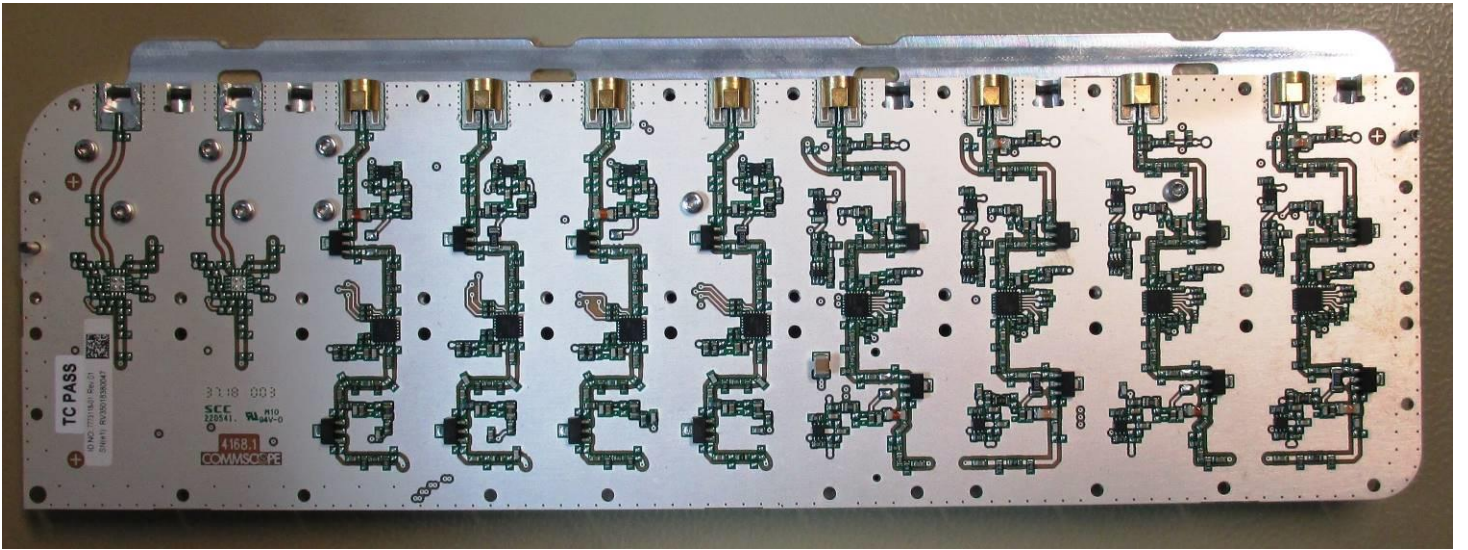




PCB P4175 CAP-H PoE/PSE Board (7772660-01)

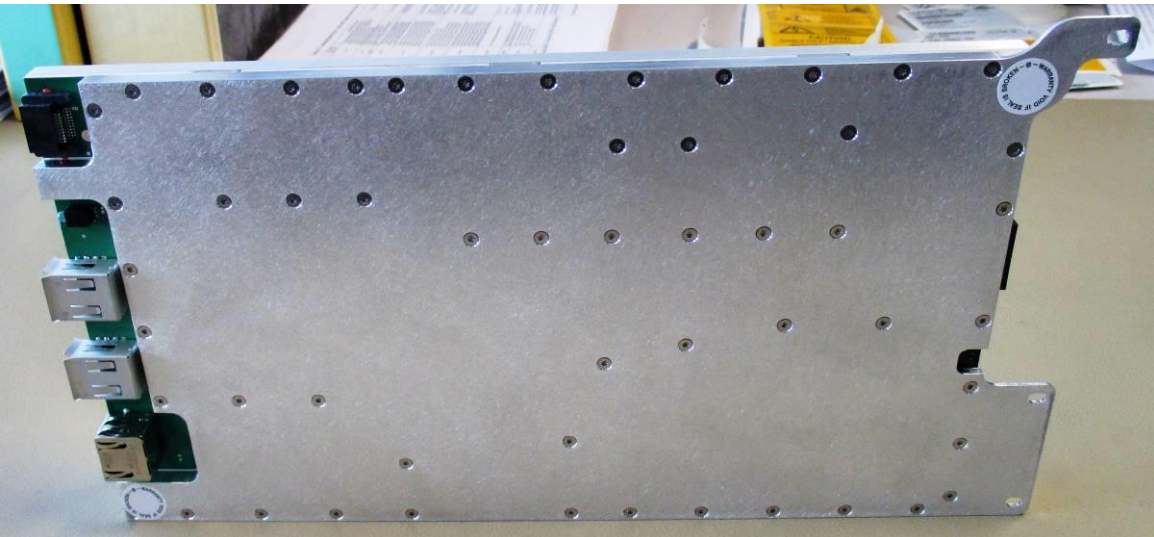
RFM UL1_DL1 7773757-00

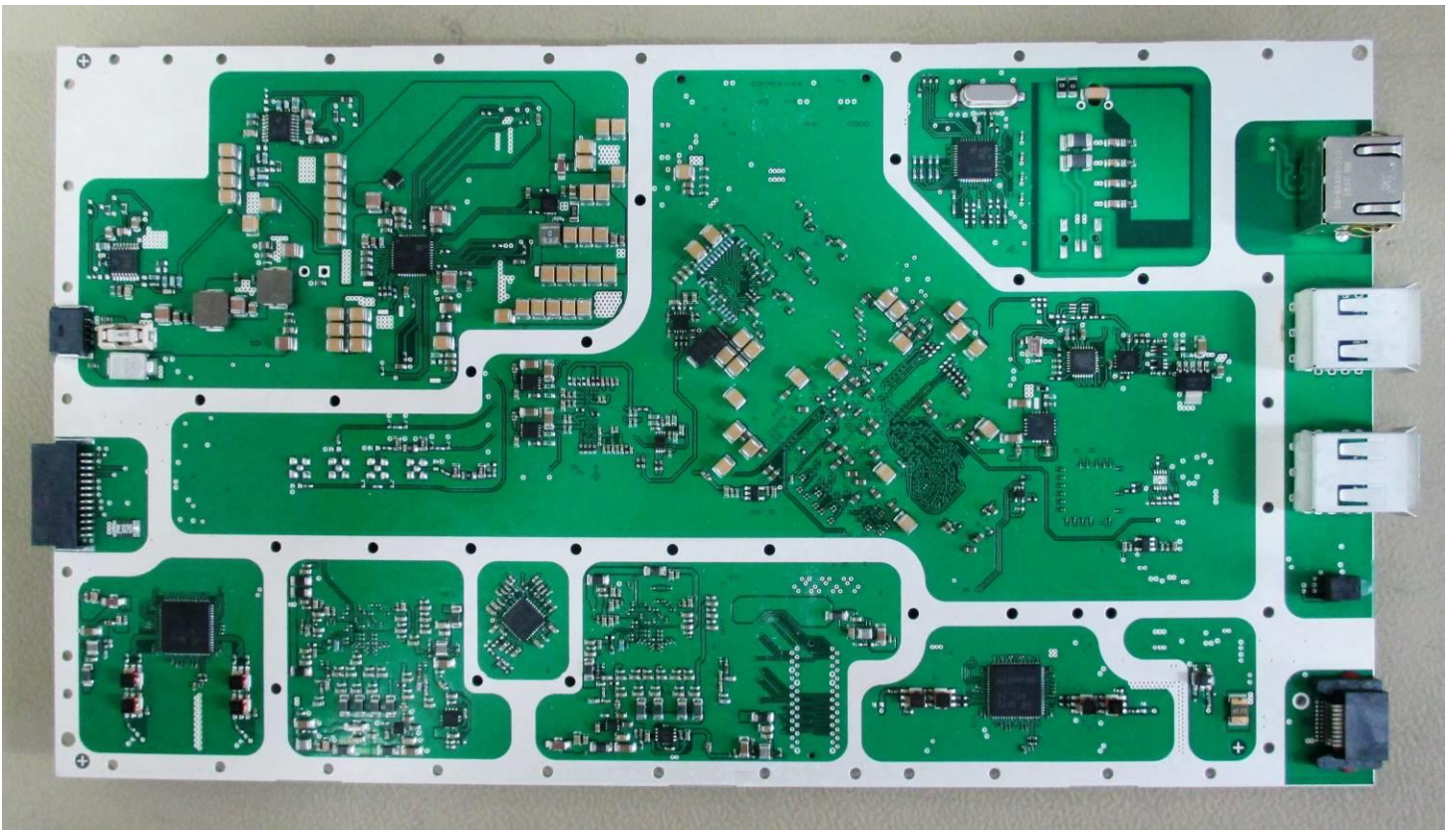
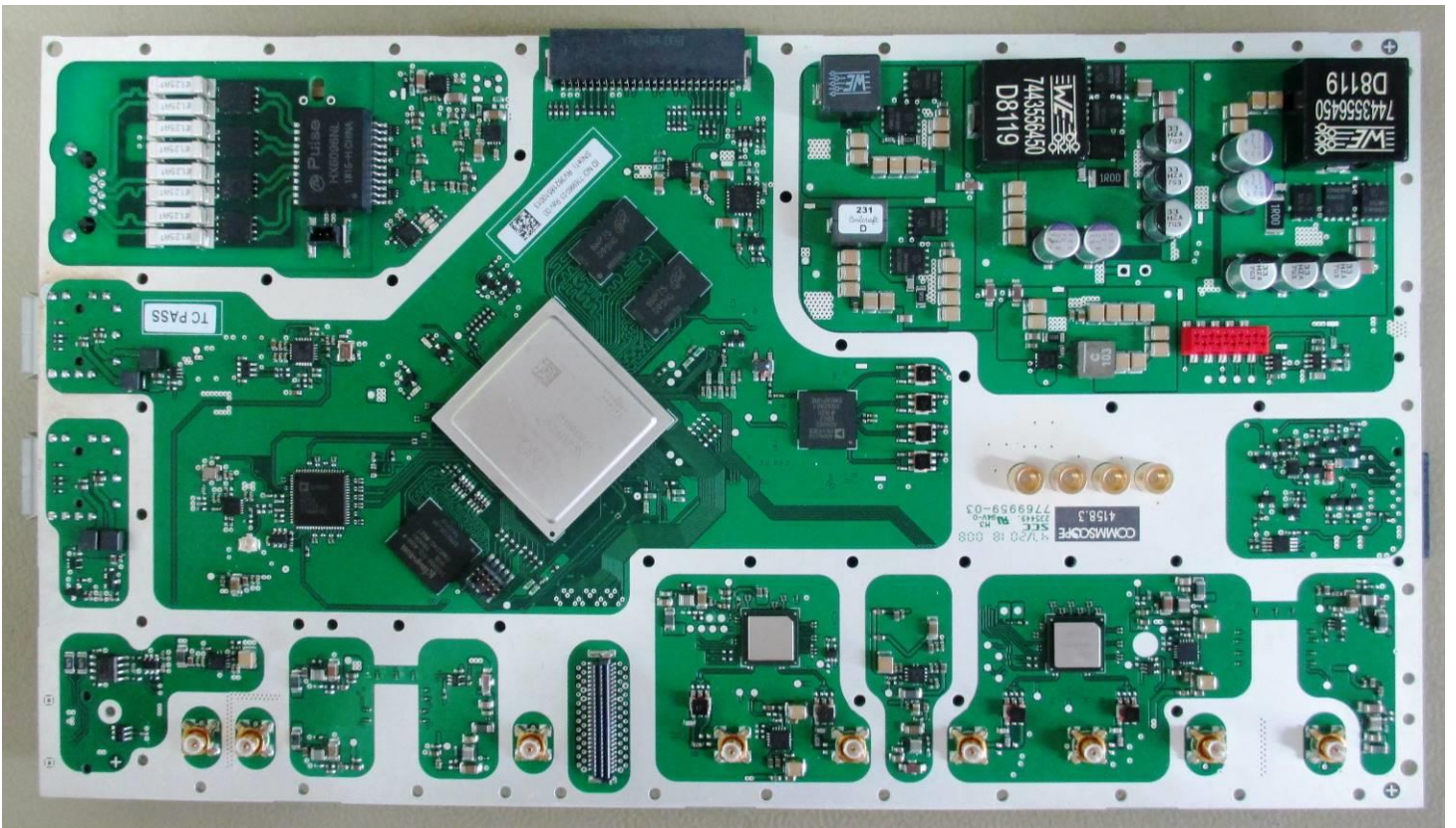




PCB P4168 RF Board UL1/DL1 4-9/17-27 (7773118-01)

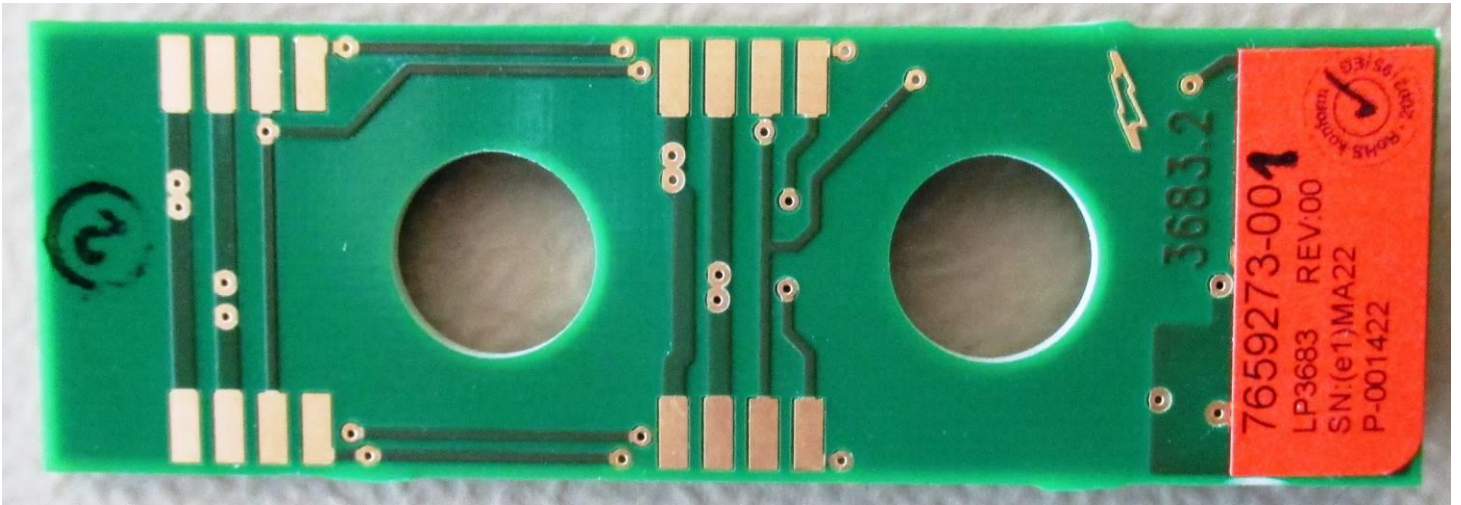
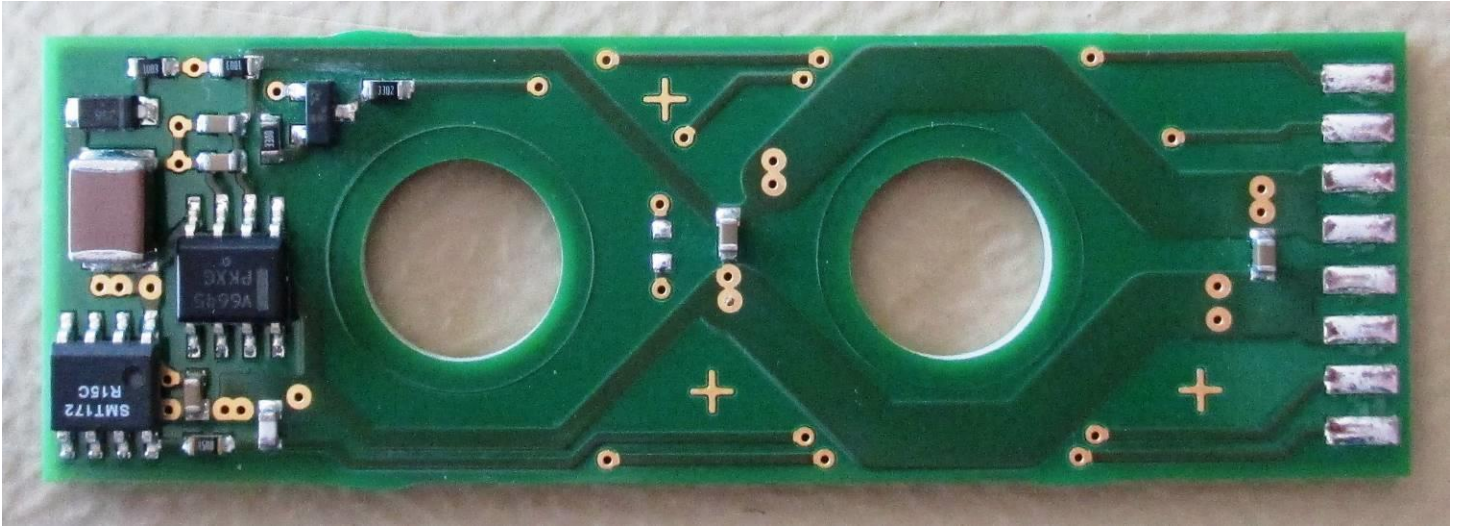
SPM F1/C1 7773756-00



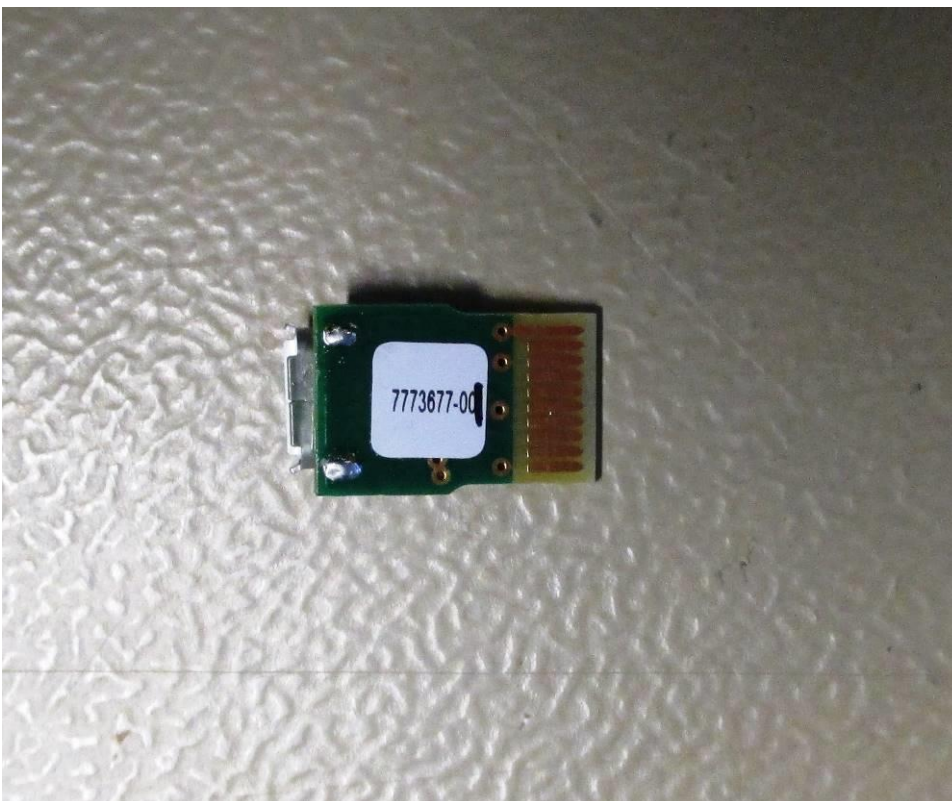


PCB P4158 dOTRX digital board F1/C1 (7769960-03)

PCB P3683 FanUnitBoard M2-Cab 7659273-01



PCB P4182 UI Local Port Adapter 7773677-01



PCB P3700 PA-AddrLineAdaptBrd 7661367-00

