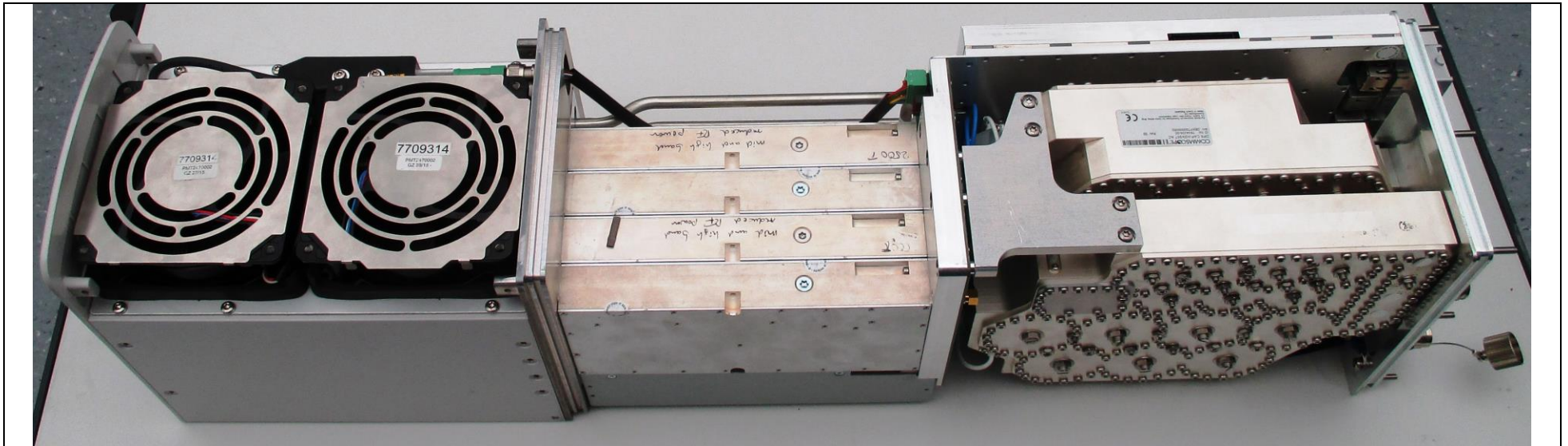
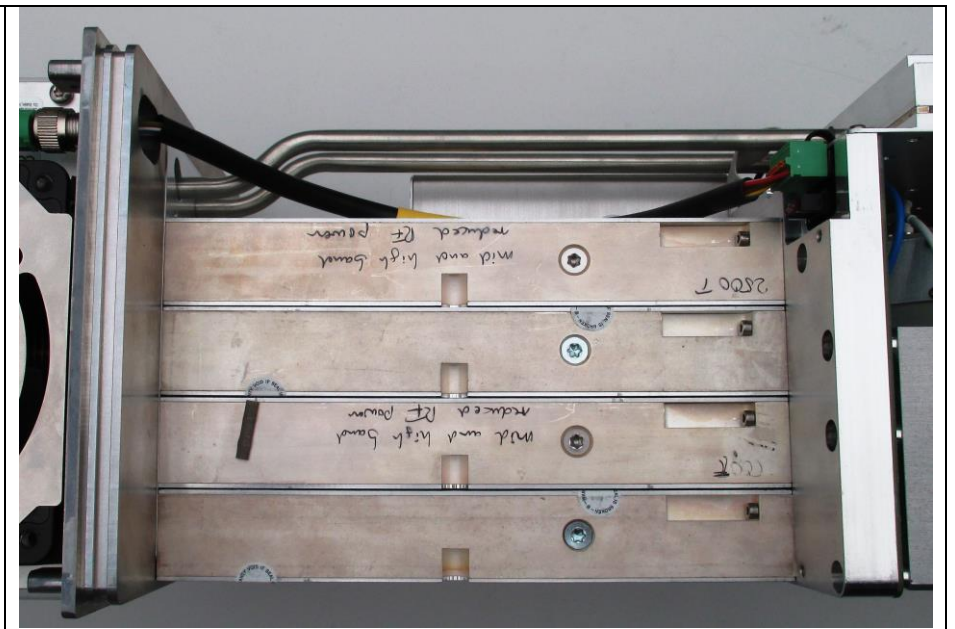


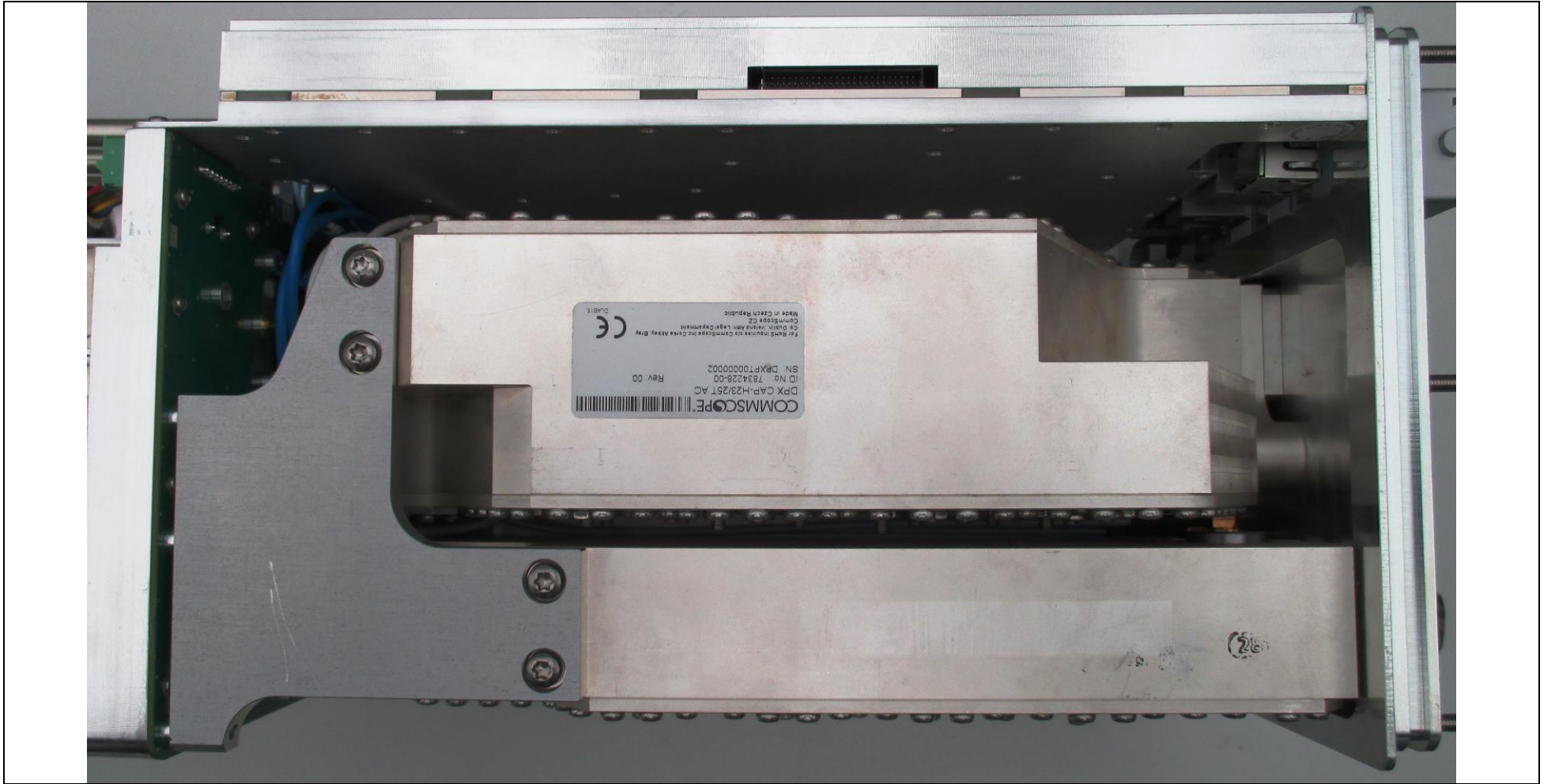
# Internal Photos CAP H 23/23/25T/25T



Fan Section

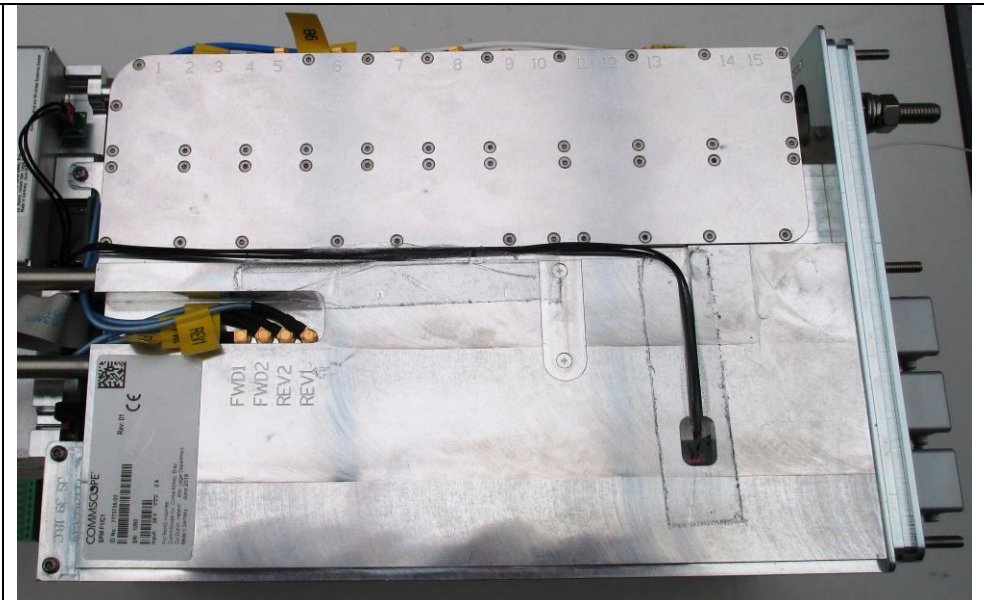
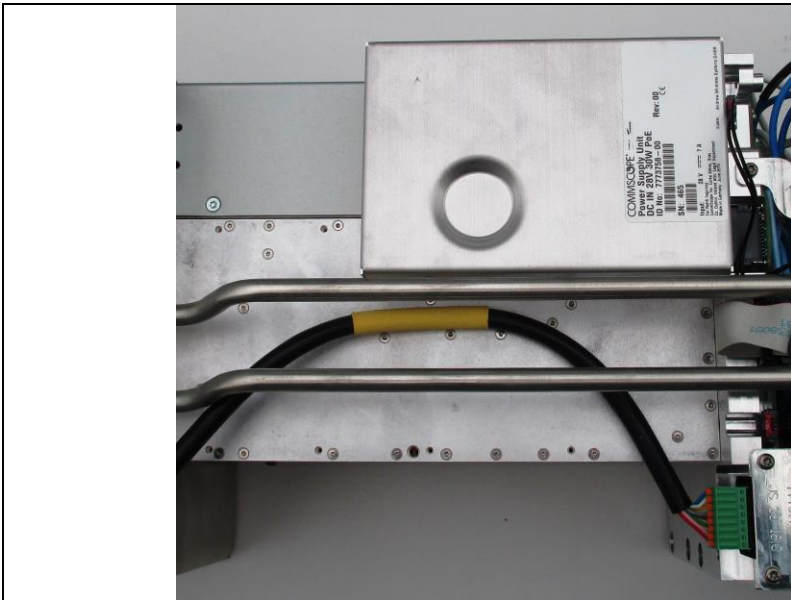
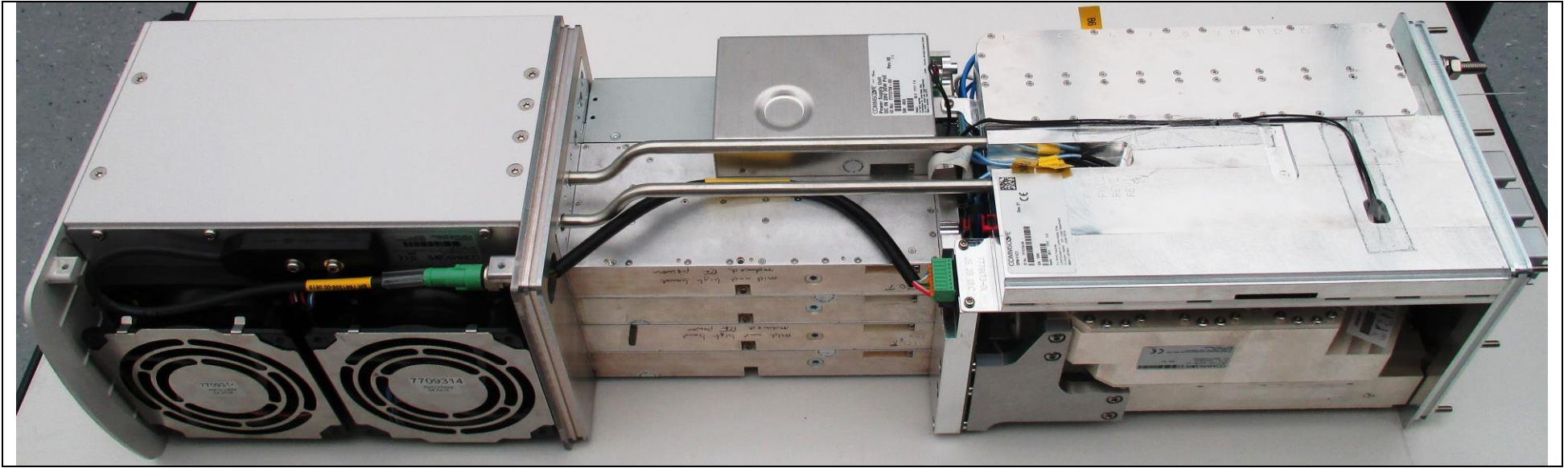


Amplifier Section



Duplexer

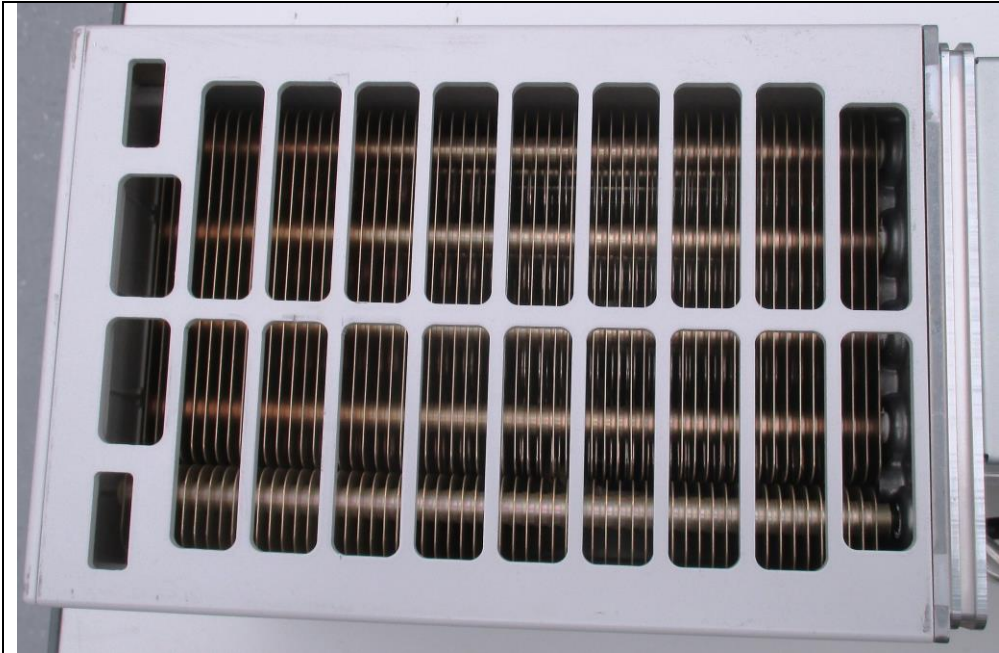
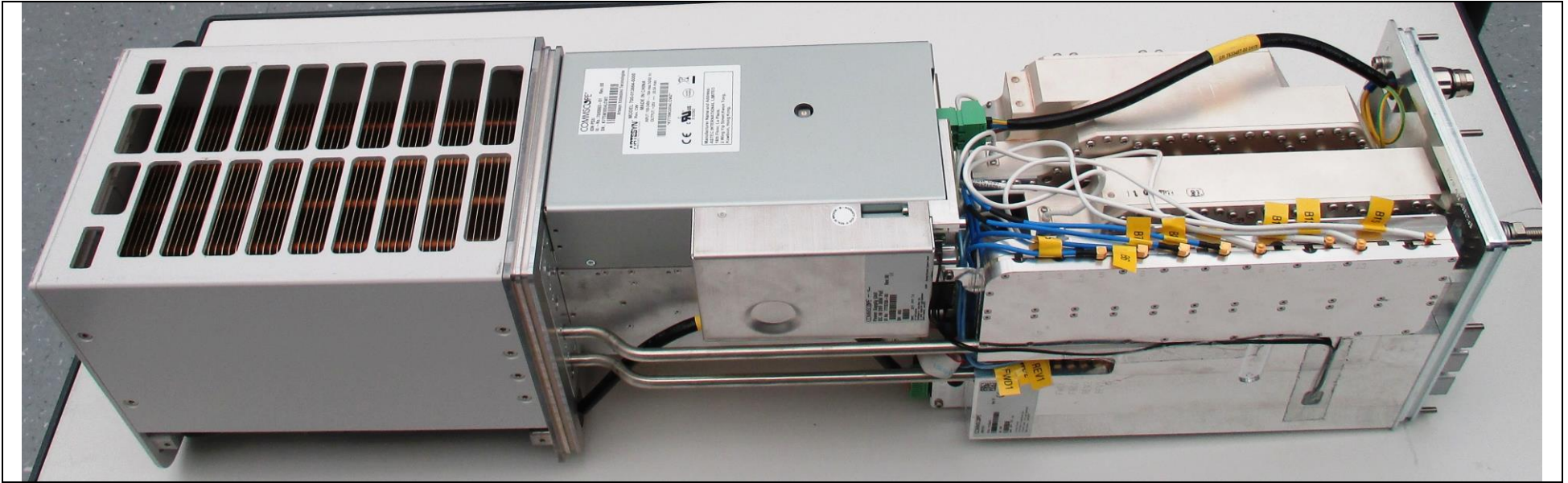




PSU DC in 28V

SPM (Signal Processing Modul) & RFM (Radio Frequency Modul)





Heat Sink



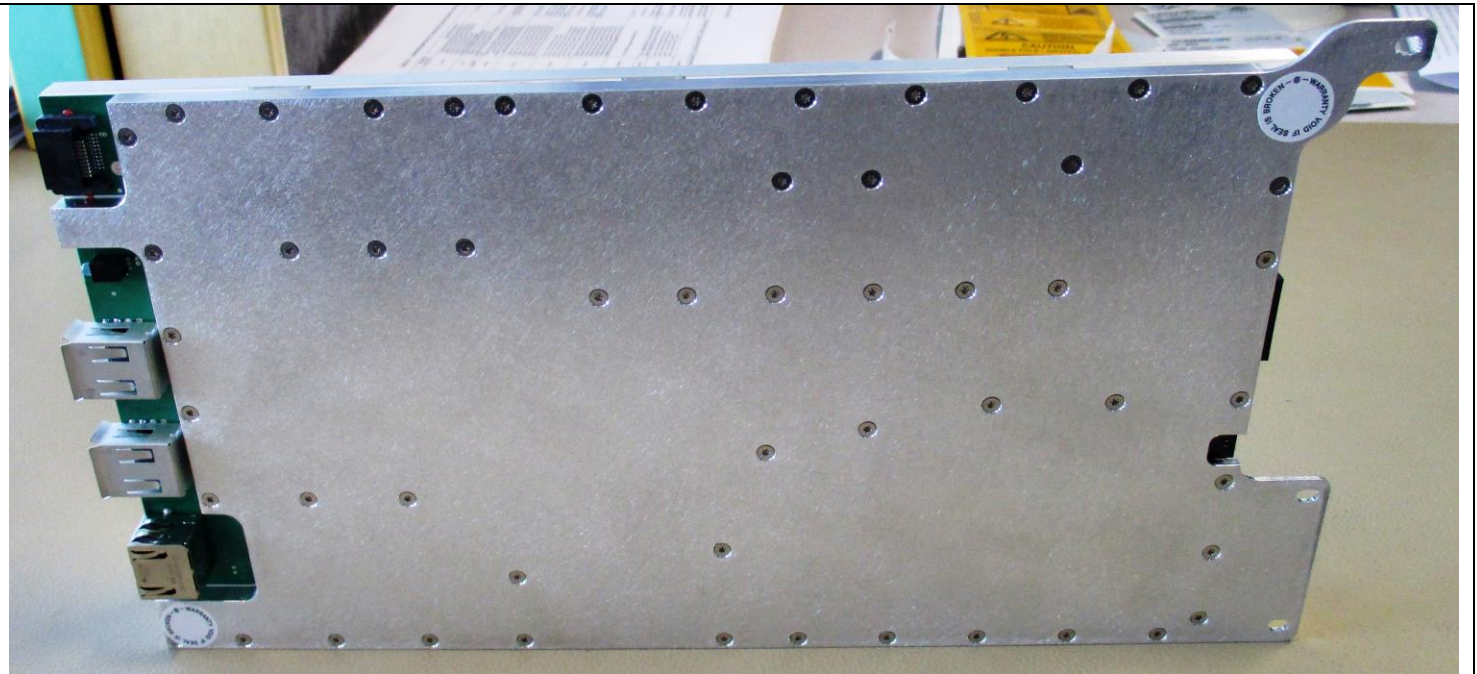
Power Supply Unit



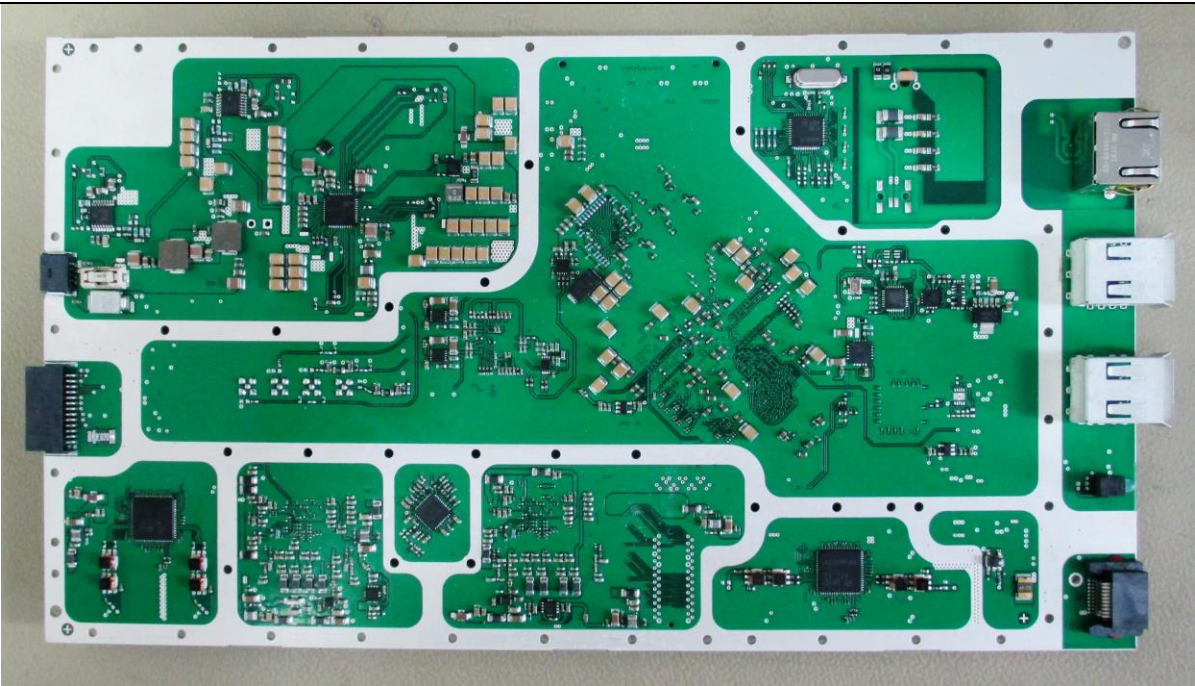
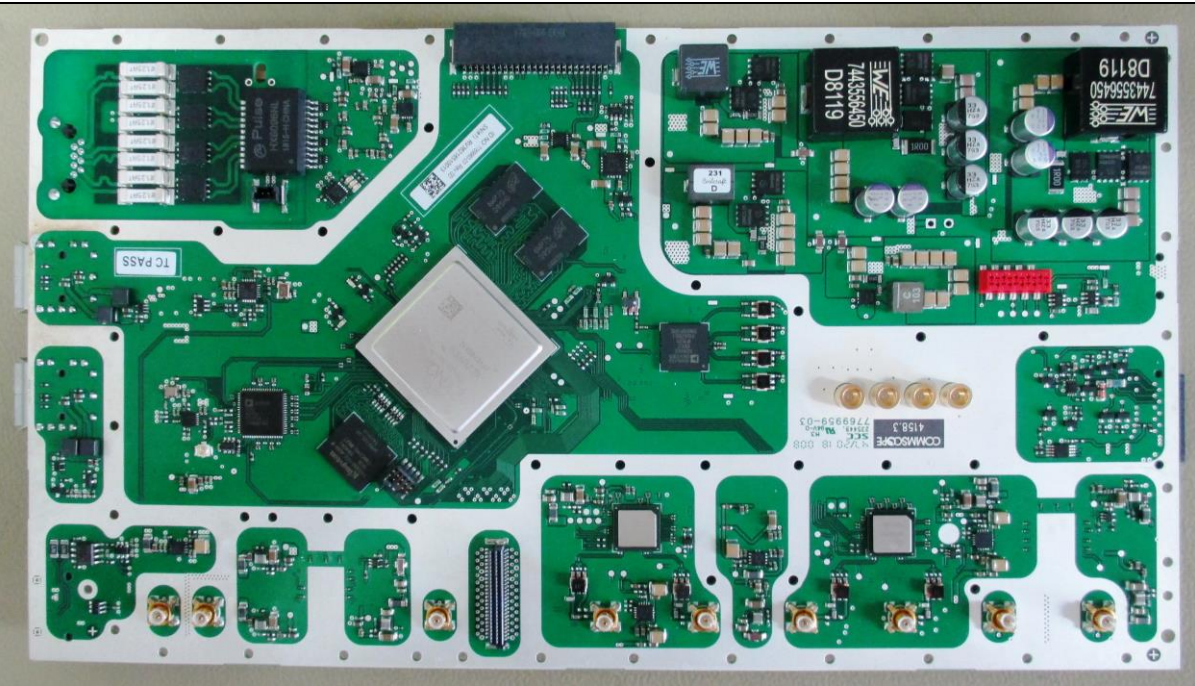




SPM F1/C1 7773756-00

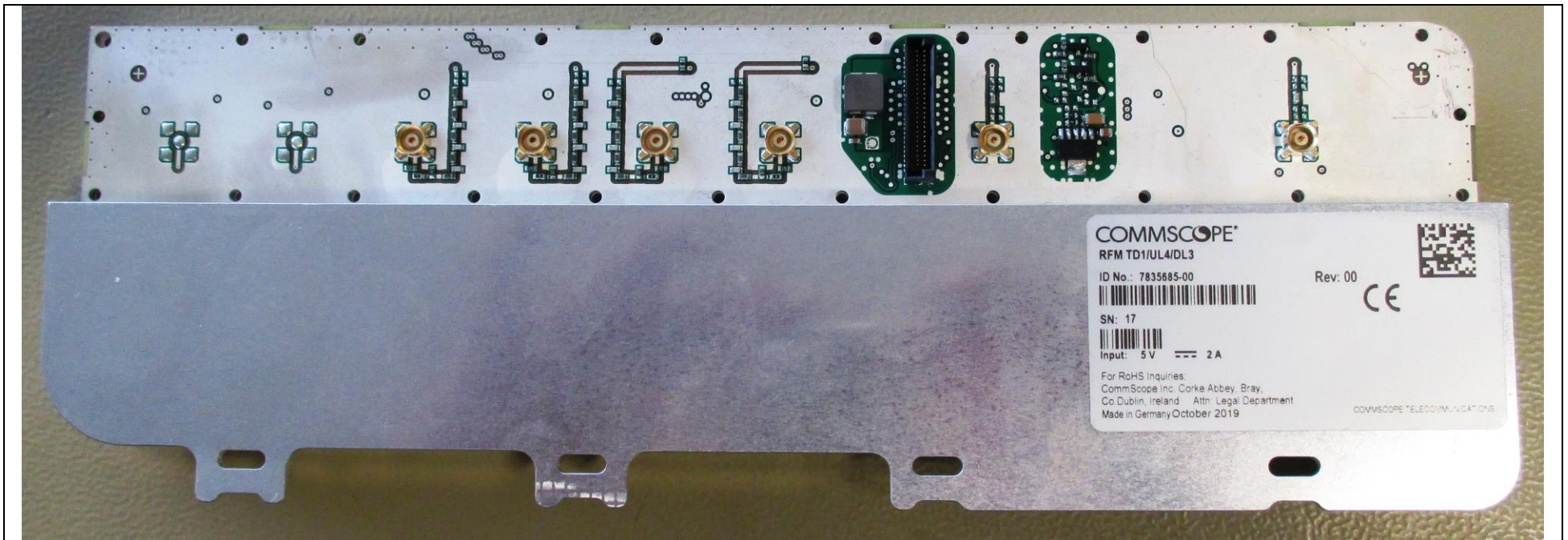
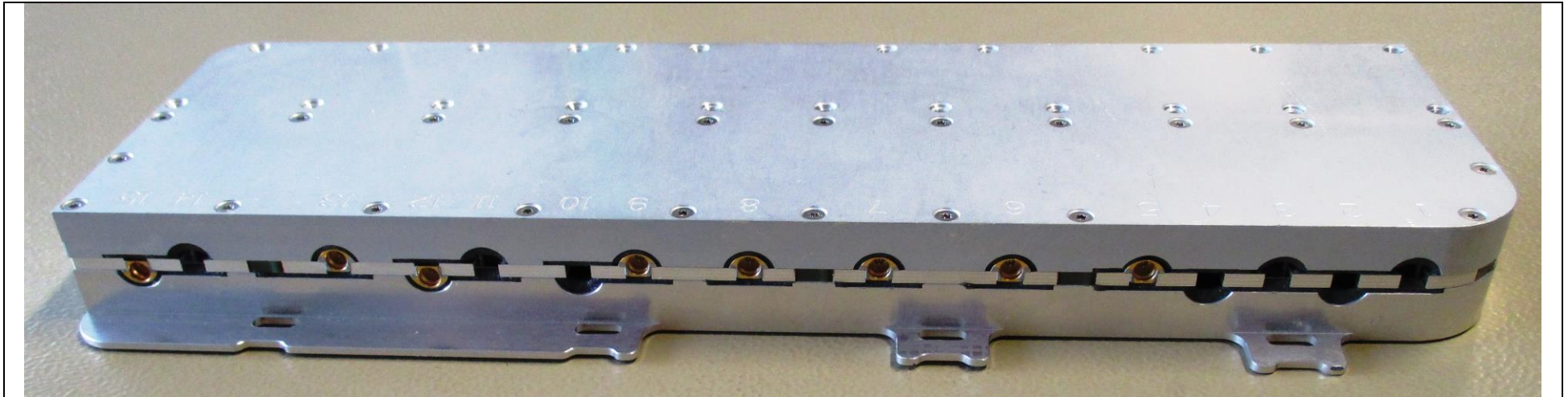




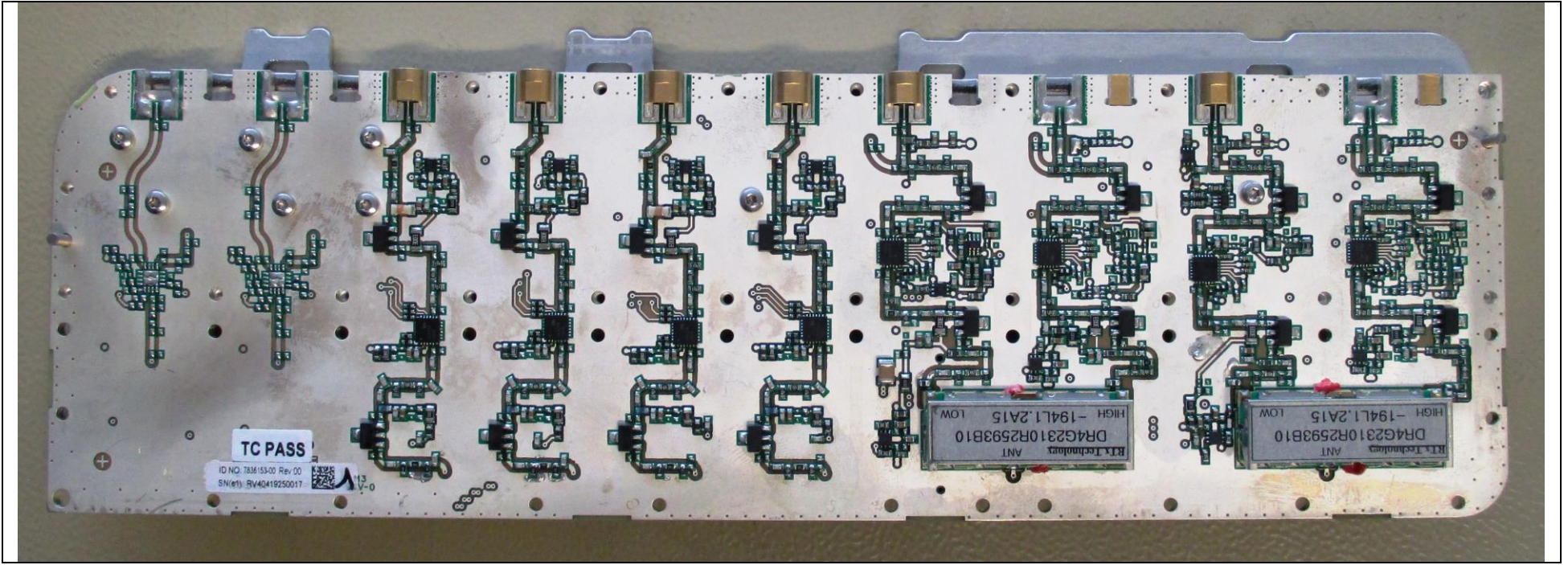




RFM TD1/UL4/DL3 7835685-00







TC PASS

ID NO: 7836-53-00 Rev: 00  
SN: (e1) 5V40419250017

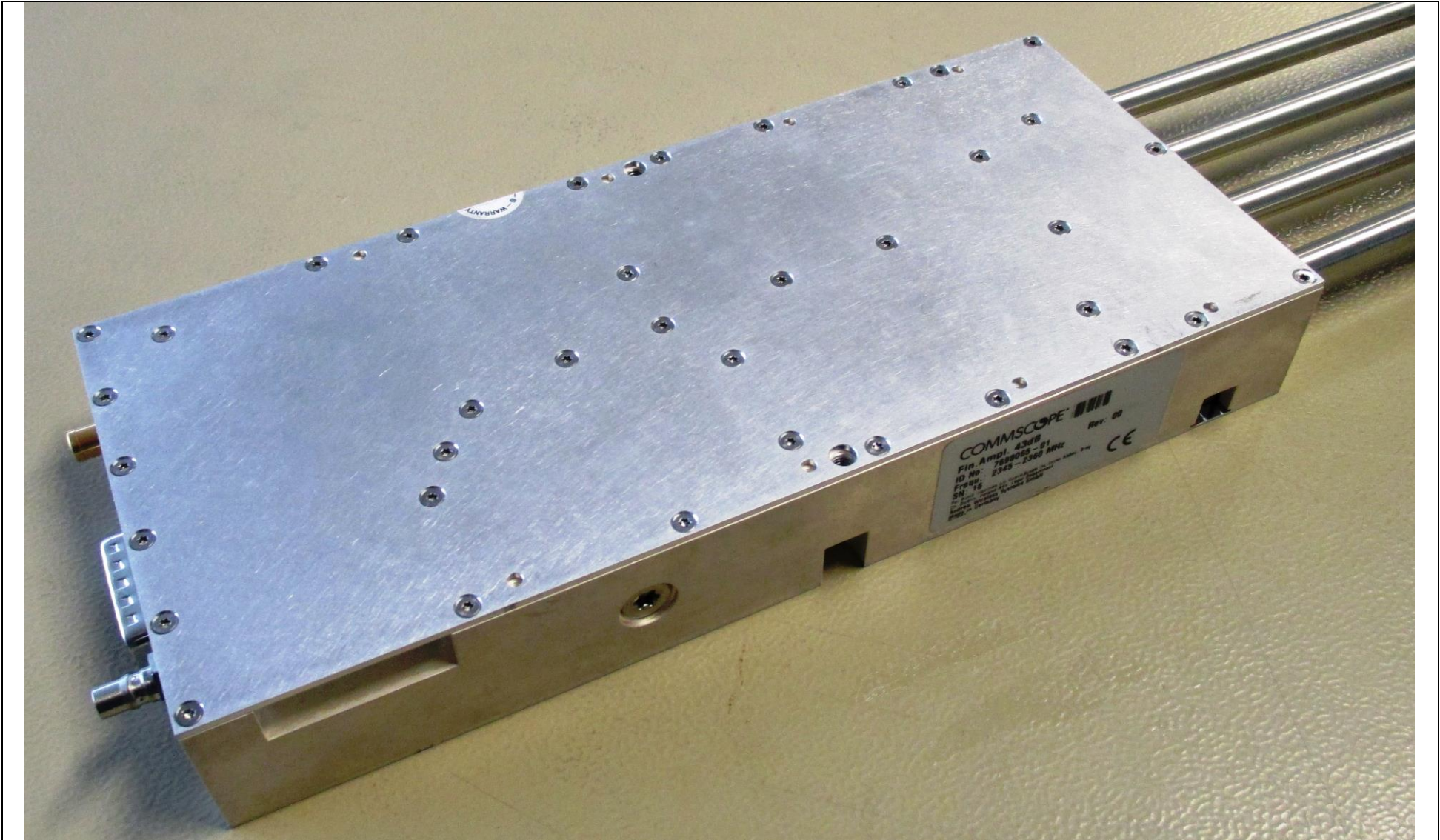


RTX Technologies  
ANT  
DR4G2310R2593B10  
HIGH -194L1.2A15  
LOW

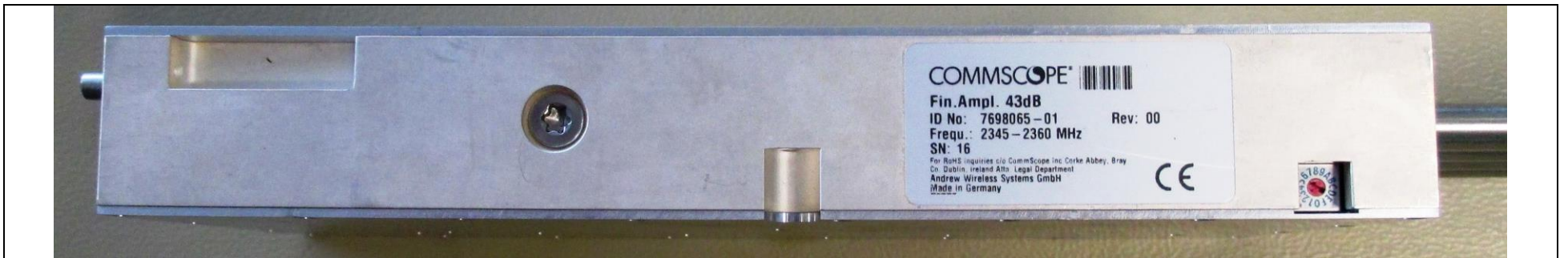
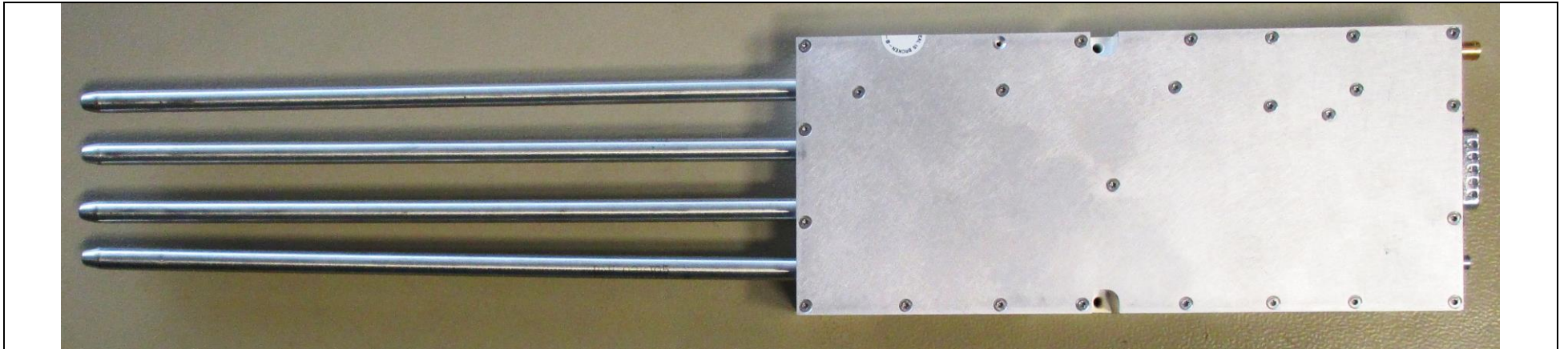
RTX Technologies  
ANT  
DR4G2310R2593B10  
HIGH -194L1.2A15  
LOW



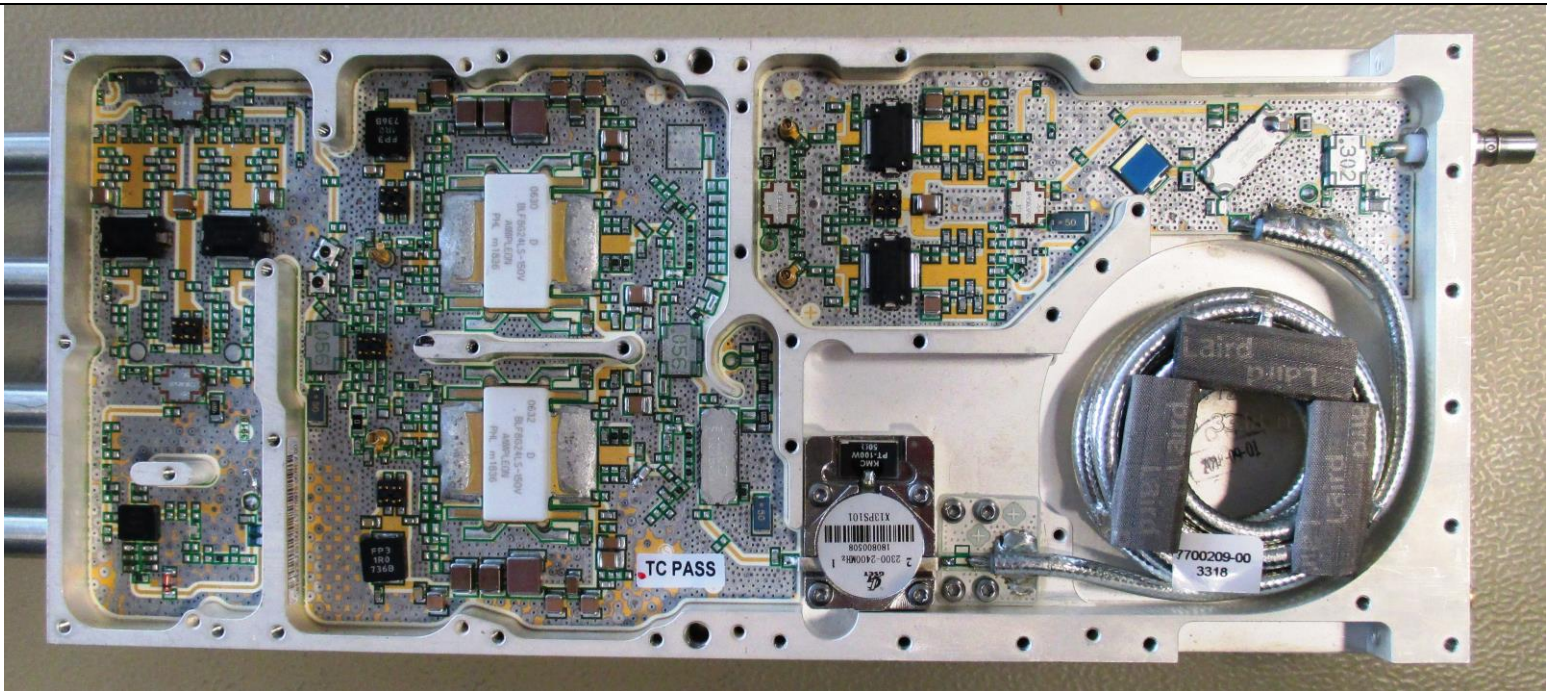
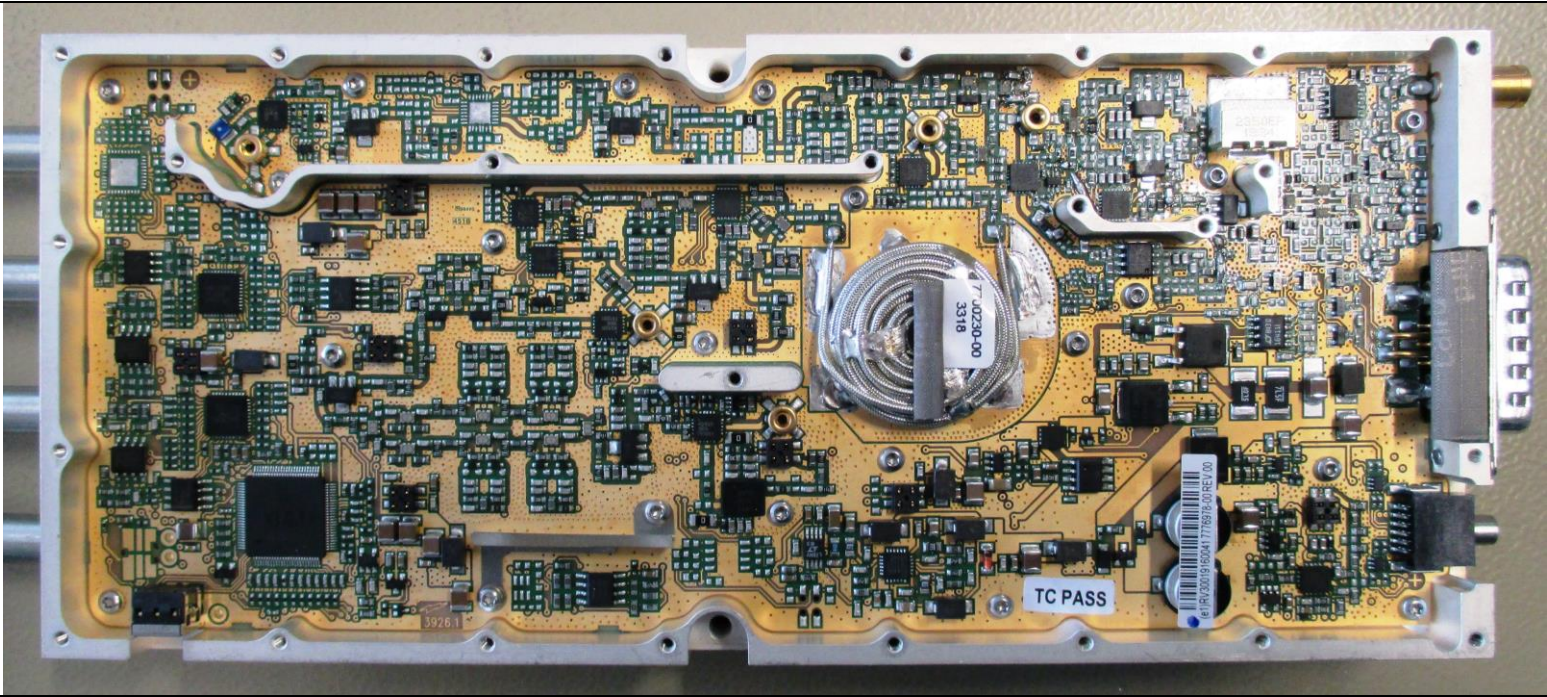
Fin. Ampl. 2345-2360 43dB 7698065-01





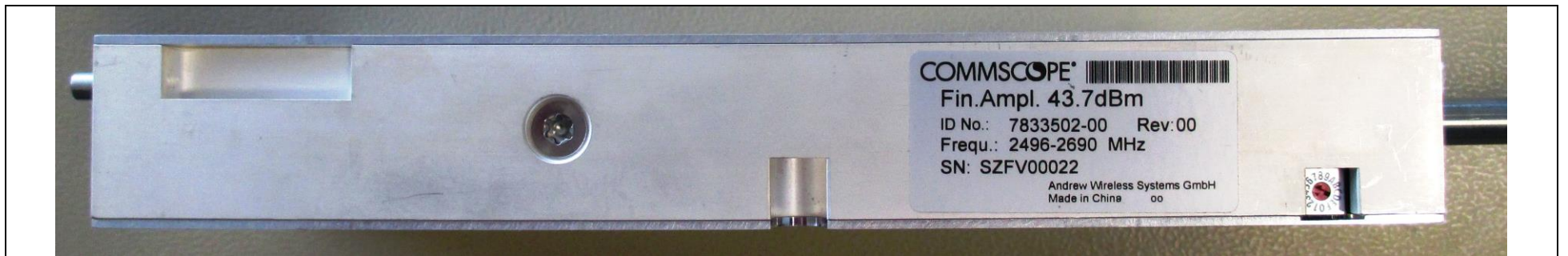








Fin. Ampl. 2496-2690 43dB 7833502-00

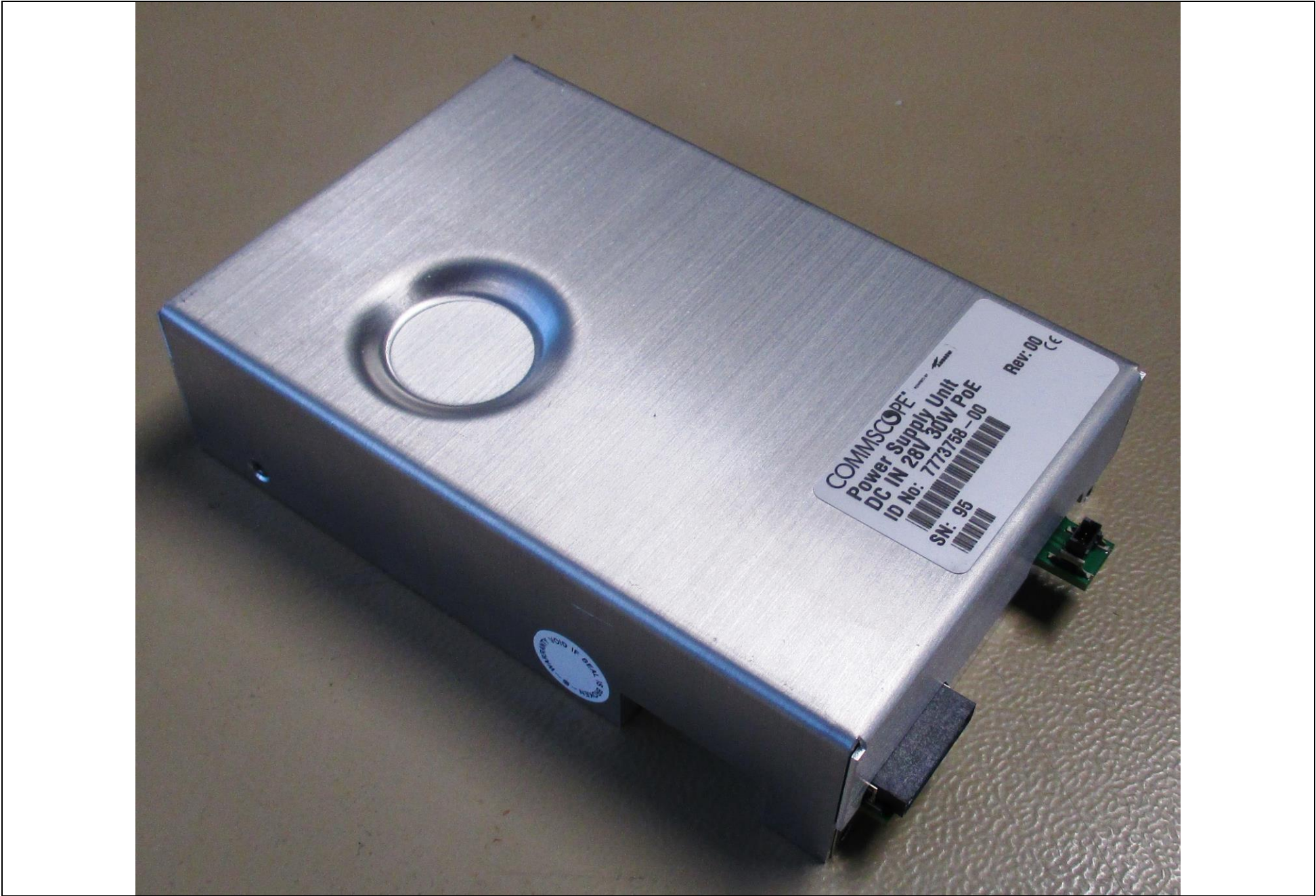




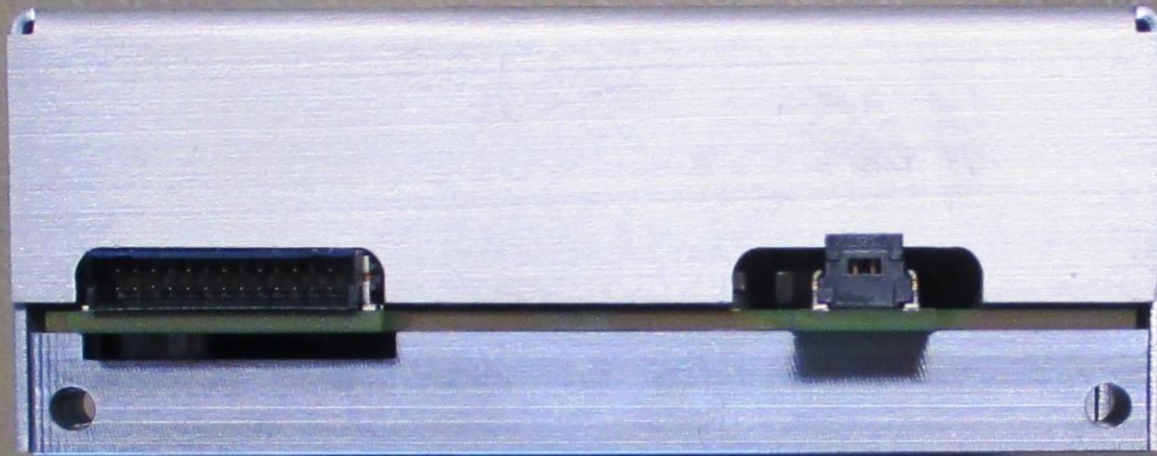




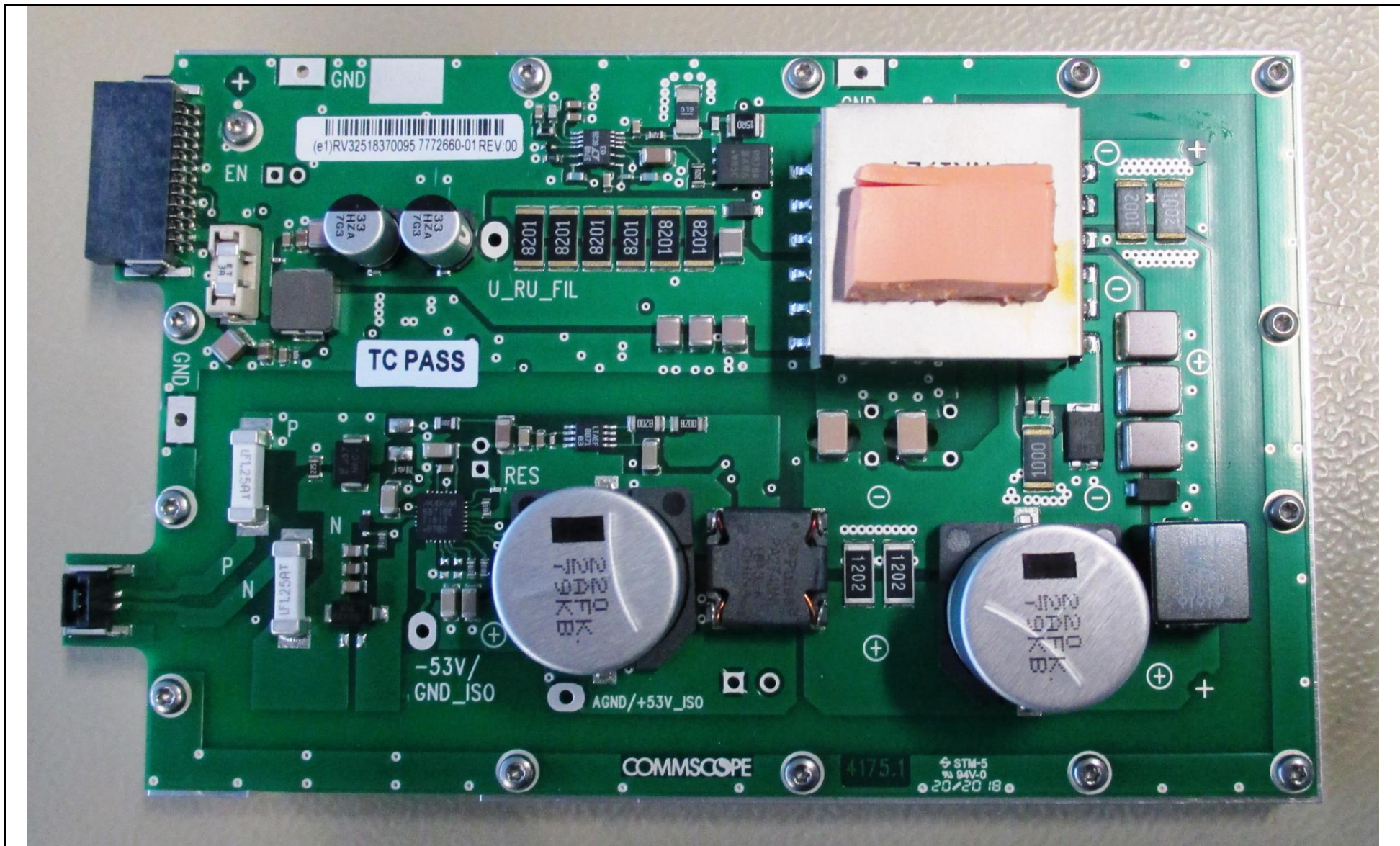
Power Supply Unit DC IN 28V 30W PoE 7773758-00











(e1)RV32518370095 7772660-01 REV.00

TC PASS

U\_RU\_FIL

-53V/  
GND\_ISO

AGND/+53V\_ISO

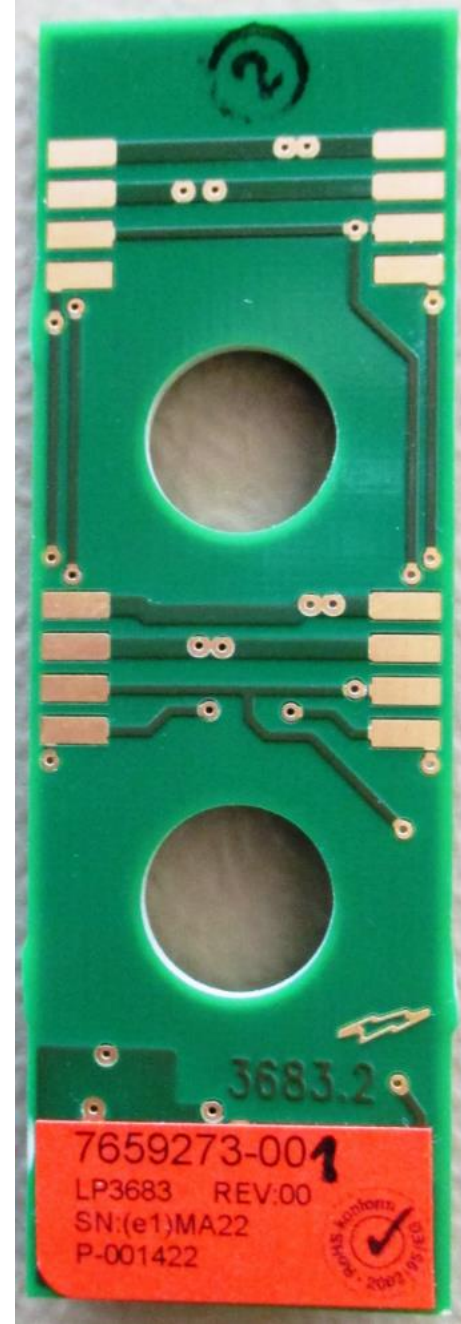
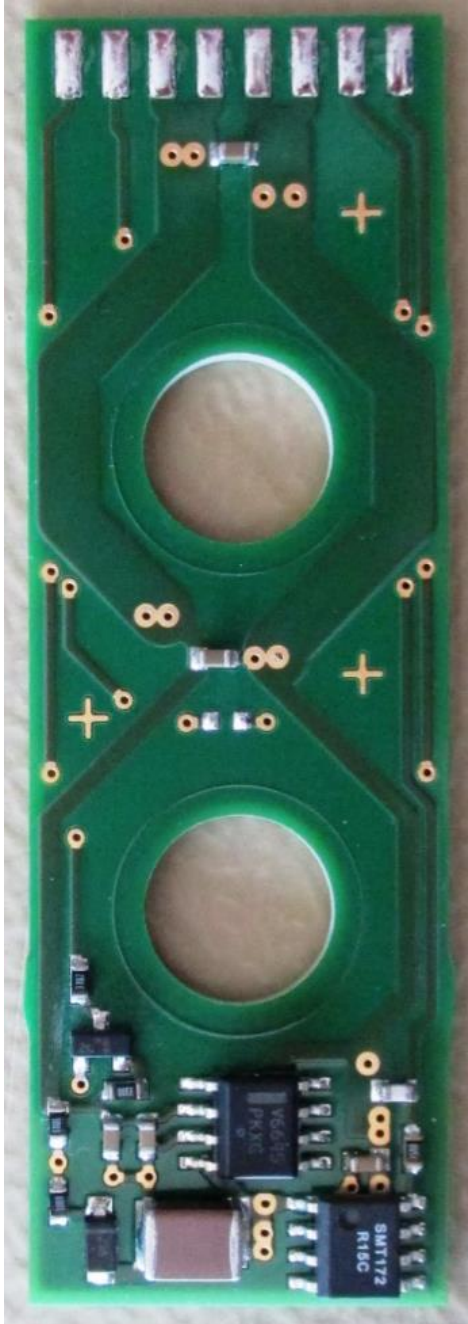
COMMSCOPE

4175.1

STM-5  
94V-0  
20/20 18

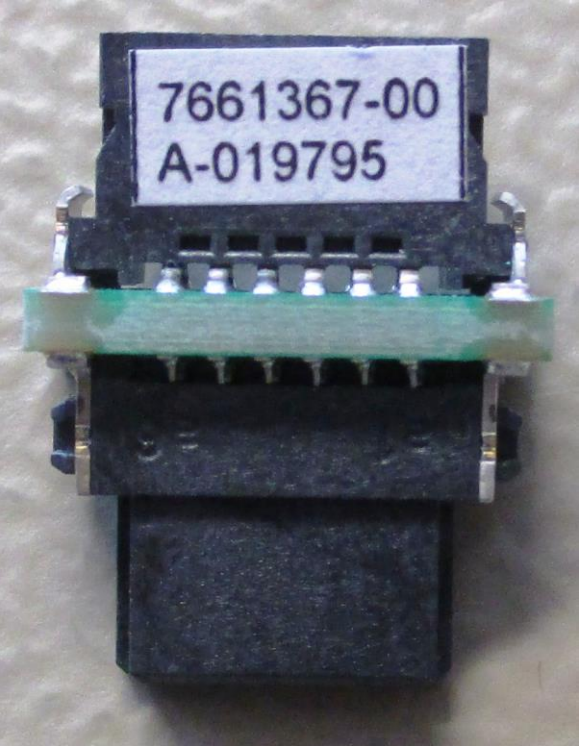


PCB P3683 Fan Unit Board M2-Cab 7659273-01





PCB P3700 PA-AddrLineAdaptBrd 7661367-00



PCB P4182 UI Local Port Adapter 7773677-01

