



# Efergy Pro Gateway

Installation Guide

# 1

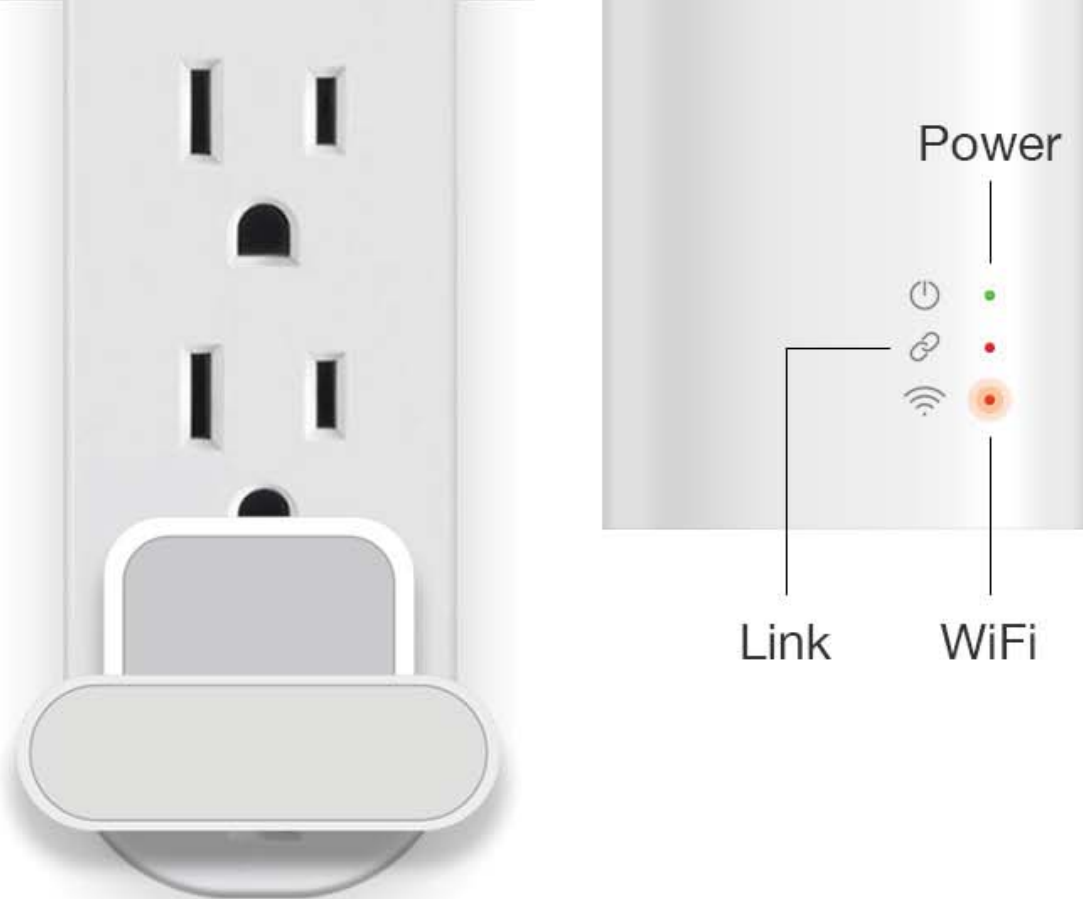
## Install the **Efergy Pro Gateway**

This guide is going to take you through an easy step by step instructions to register and install your **Efergy Pro Gateway**.



## **Connect the gateway**

Plug the Gateway into a USB wall adapter (not included in the product set).



## Power on the gateway

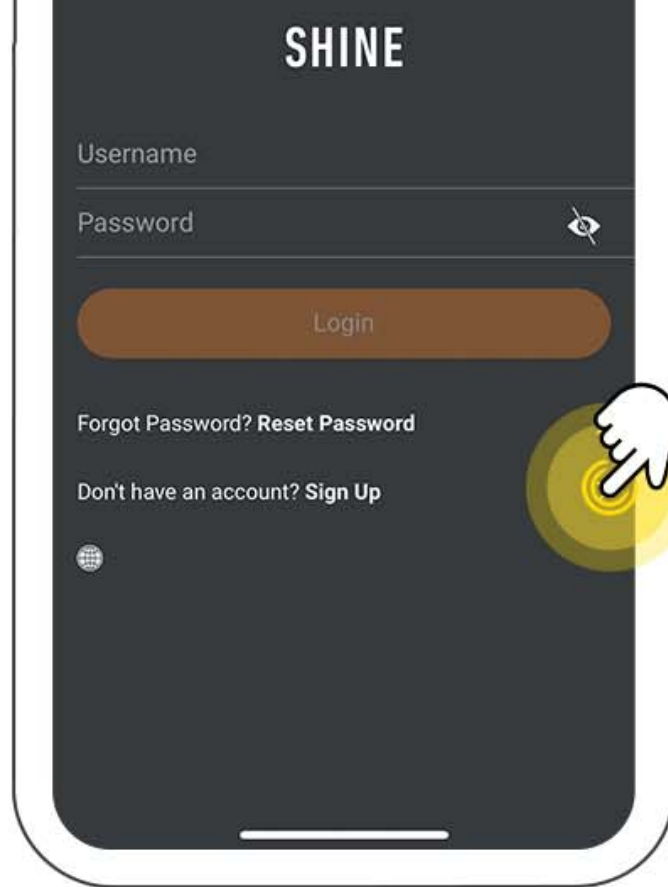
Plug the Gateway/adaptor into a power strip or into the wall outlet.

The **Power** LED will light solid green and the **WiFi** LED will flash red.



## Get the **Shine Energy** app

Download or update the **Shine Energy** app free from the App Store or Google Play.



## Sign up or log in

If you're new to Shine, tap the **Sign up** option on the app home screen, then select complete the registration.

If you already have a Shine account, enter your **Username**, **Password** and tap the **Login** button.

For a registration to succeed please ensure the following:

**1. Name:** Enter your name

**2. email:** Make sure you use a valid email address in the email field.

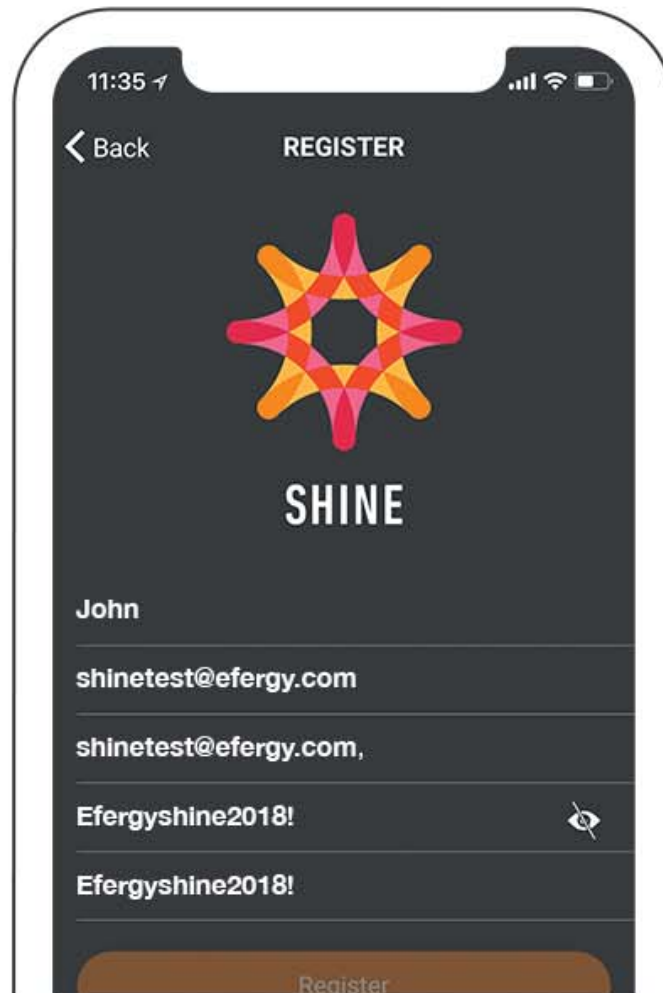
**3. Username:** Input again the email address.

**4. Password:** The password requirements for Efergy Pro accounts are:

- ✓ at least 1 uppercase character (A-Z)
- ✓ at least 1 lowercase character (a-z)
- ✓ at least 1 digit (0-9)
- ✓ at least 1 special character (punctuation)
- ✓ do not forget to treat space as special characters too
- ✓ at least 10 characters
- ✓ at most 128 characters
- ✓ not more than 2 consecutive identical characters (e.g., 111 not allowed)

For example **Efergyshine2018!**

**5. Confirm Password**



## Sign up example

For example, we created an account with the following information:

Name: **John**

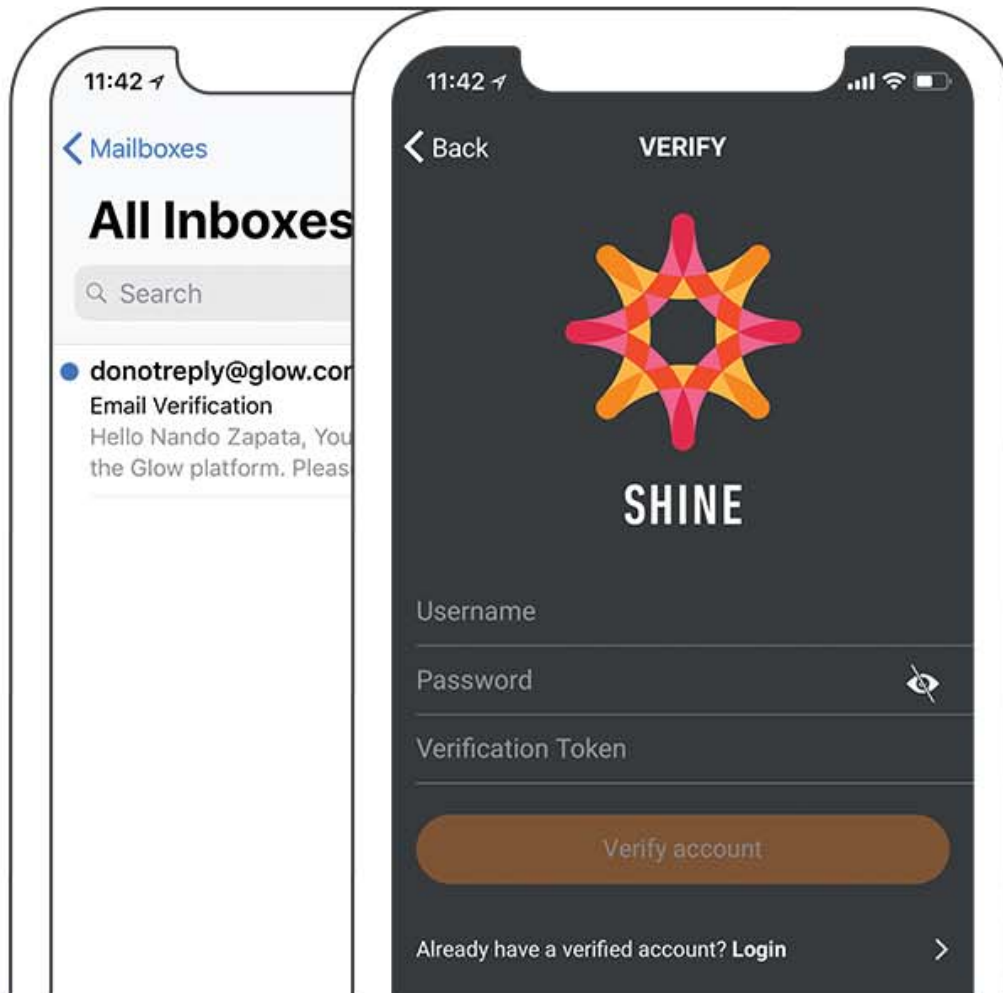
email: **shinetest@efergy.com**

Username: **shinetest@efergy.com**

Password: **Efergyshine2018!**

Confirm password: **Efergyshine2018!**

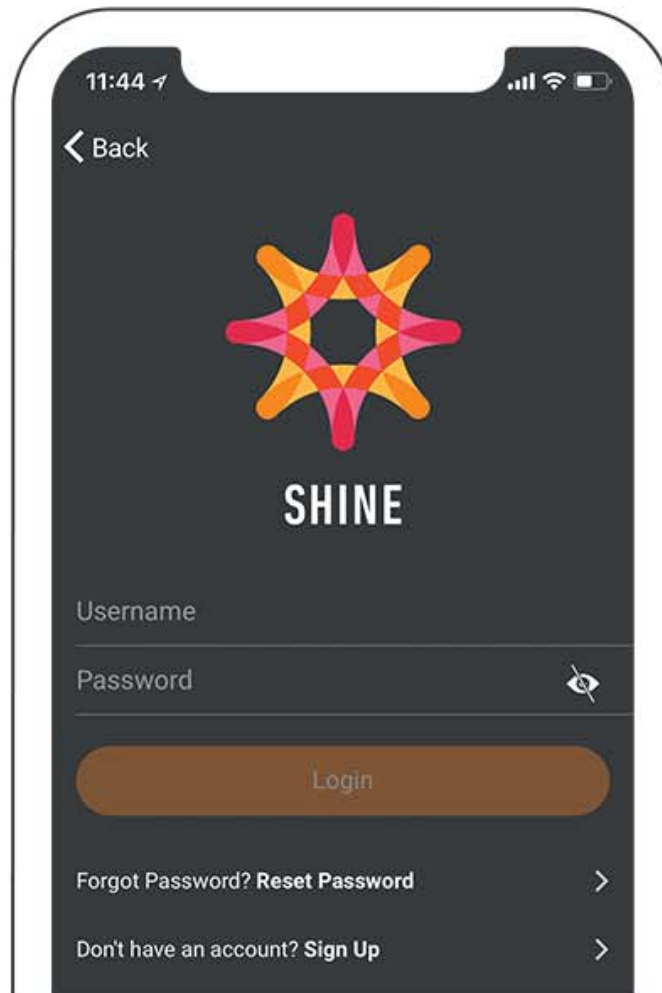




## Email **verification**

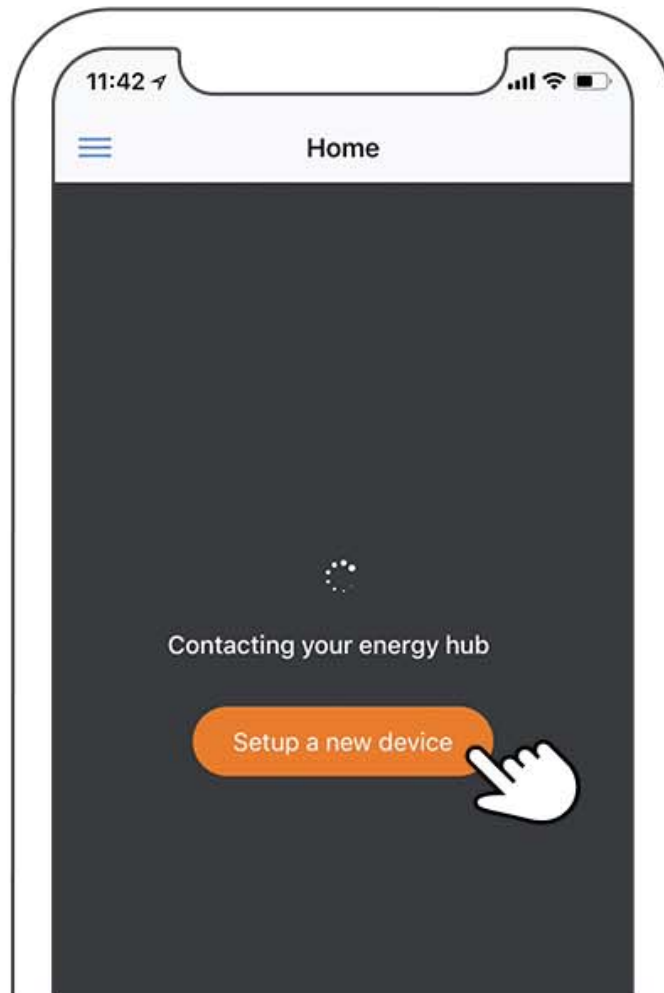
You will now receive a 4-digit **Verification Token** to your email.

To verify the account, enter your **Username** (email), **Password** and the 4-digit **Verification token**.



## Log in

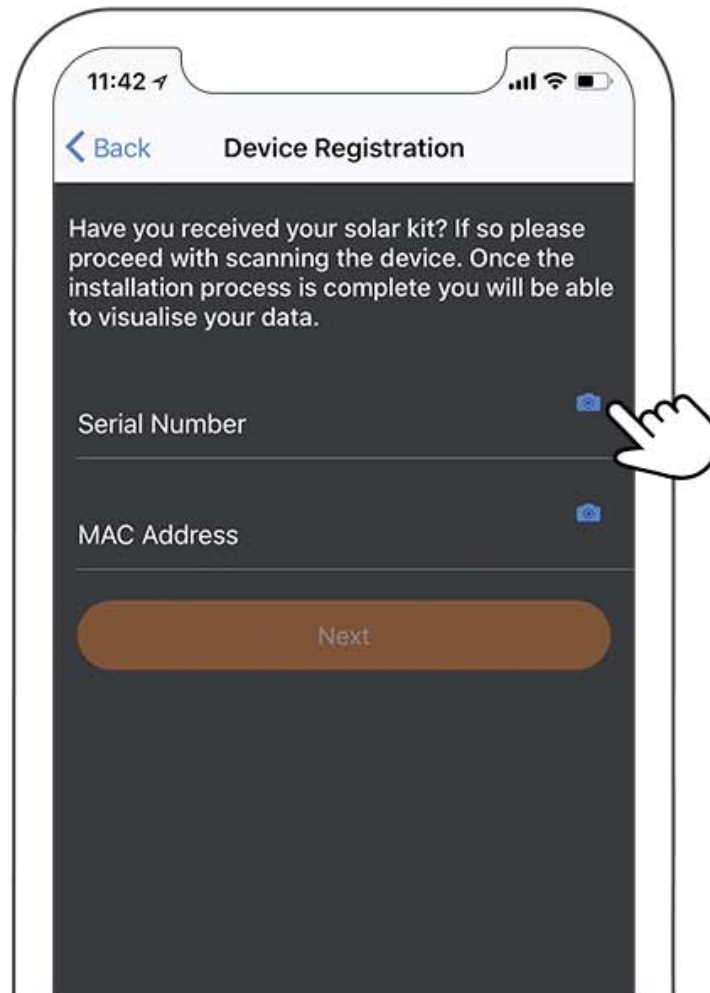
To log into your Shine account: Enter your **Username** or **email**, your **Password** and click **Login**.



## Setup a new device


Make sure that your mobile device is connected to the 2.4 GHz Wi-Fi.

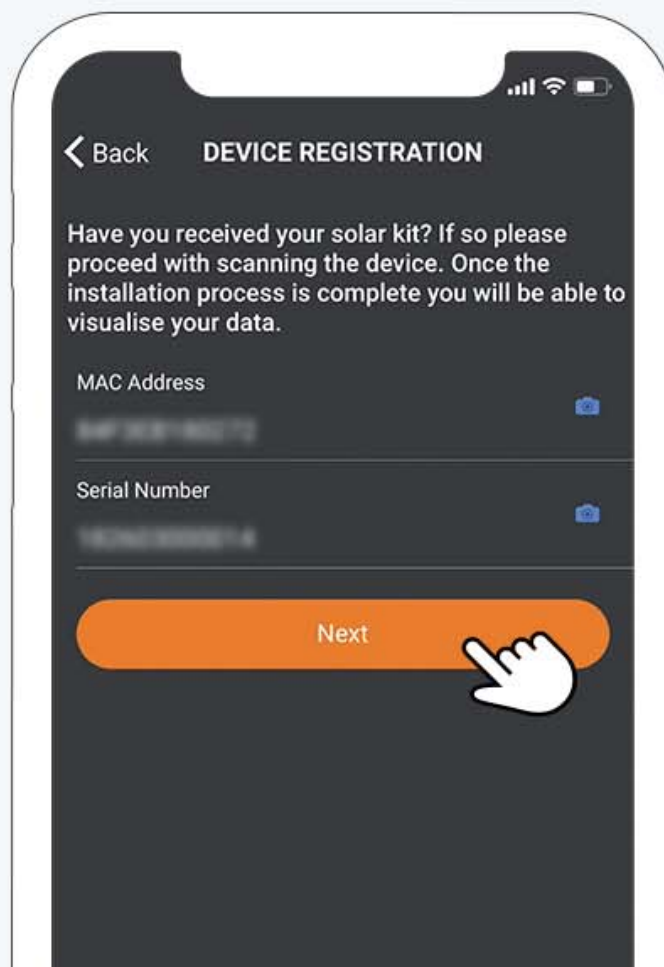
Tap the **Setup a new device** button on the Shine app home screen.

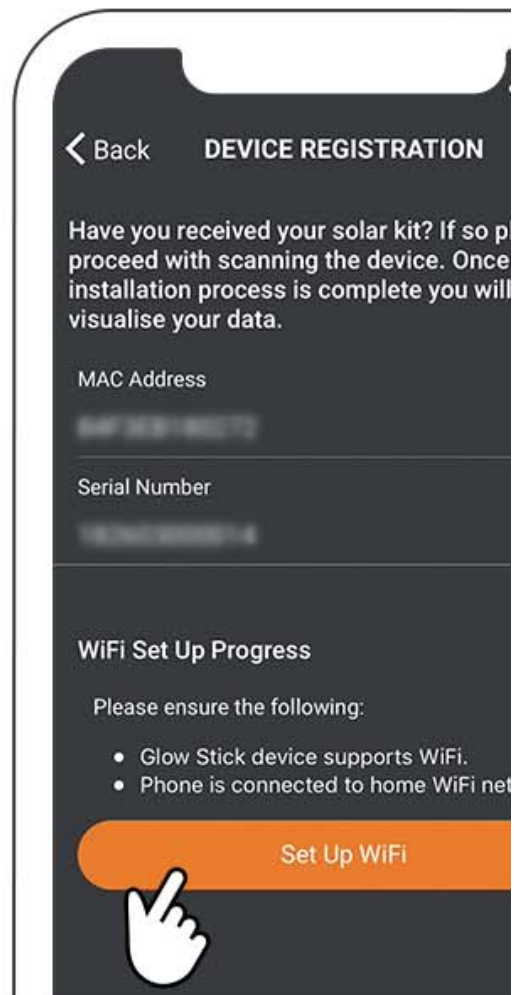
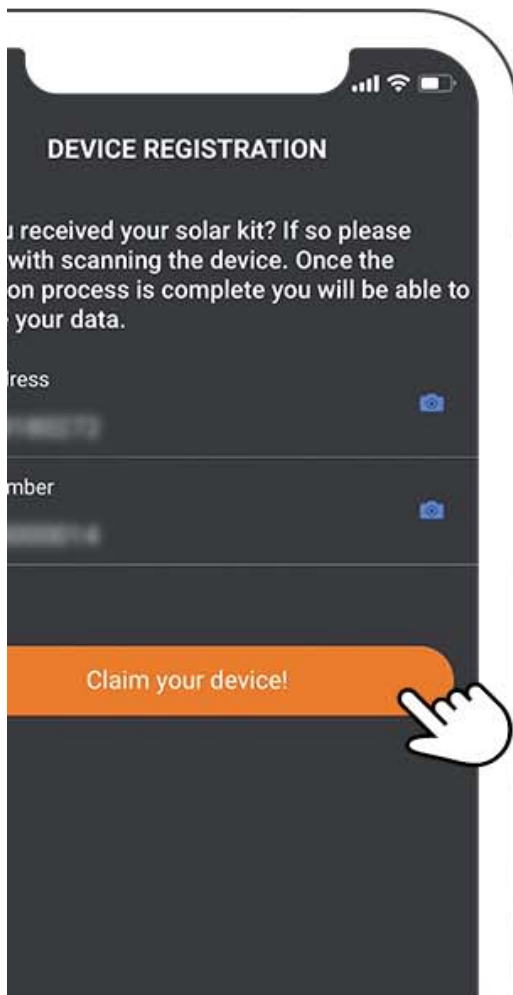


## Device Registration

Make sure that your mobile device is connected to the 2.4 GHz Wi-Fi.

To add a new Gateway enter the **Serial Number** and **MAC Address**: Locate your device's product label on the rear of the Gateway or in the Gateway's box. Tap the  icon in the right and scan the barcode or enter the number manually. Tap the **Next** button to continue with the registration.



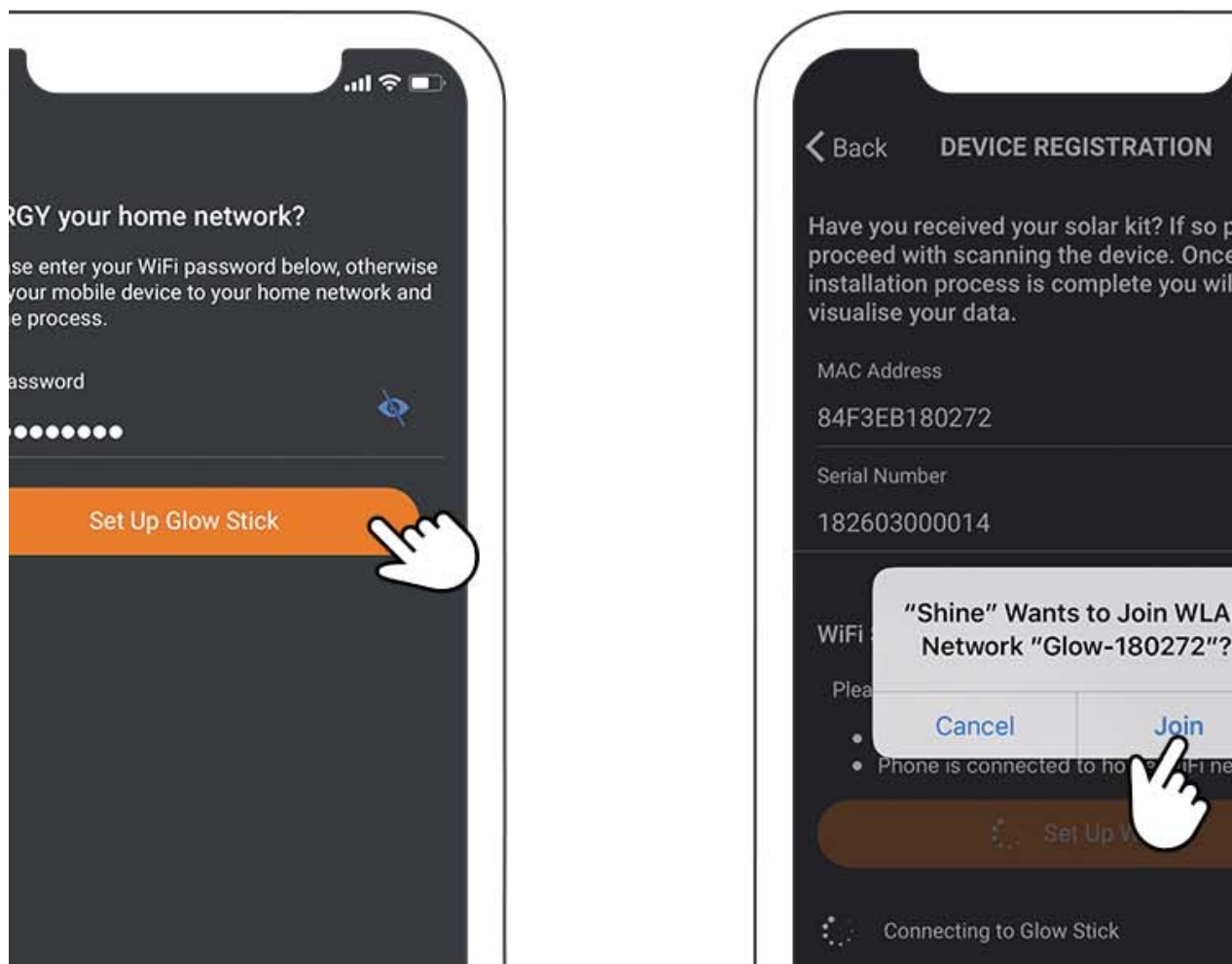


## Claim your device!

Tap the **Claim your device!** and then the **Set Up WiFi** button.

Please make sure that your mobile device is connected to the 2.4 GHz Wi-Fi.



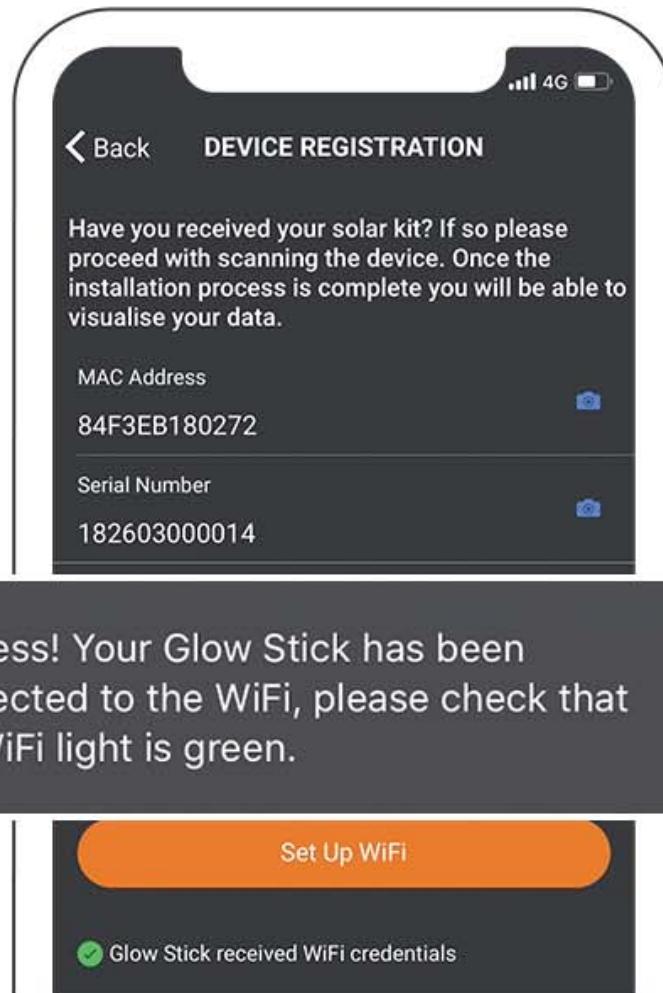


## Set Up WiFi

Make sure that your mobile is connected to the network where you want to install the Gateway.

Enter the WiFi network **Password** and tap the **Set Up Glow Stick** button.

A pop-up will appear, asking if you to allow Shine to join the Gateway's network. Tap the **Join** button to connect your gateway to your router's network.



## Connection **Success!**

If the connection is successful, a pop-up **“Success! Your Glow Stick has been connected to the WiFi, please check that the WiFi light is green”** will appear on the screen.



#### FCC Statement

Any Changes or modifications not expressly approved by the party responsible for compliance could void the user's authority to operate the equipment.

This device complies with part 15 of the FCC Rules. Operation is subject to the following two conditions:

(1) This device may not cause harmful interference, and

(2) This device must accept any interference received, including interference that may cause undesired operation.

#### ISED RSS Warning:

This device complies with Innovation, Science and Economic Development Canada licence-exempt RSS standard(s). Operation is subject to the following two conditions: (1) this device may not cause interference, and (2) this device must accept any interference, including interference that may cause undesired operation of the device.

Le présent appareil est conforme aux CNR d'ISED applicables aux appareils radio exempts de licence.

L'exploitation est autorisée aux deux conditions suivantes:

(1) l'appareil ne doit pas produire de brouillage, et

(2) l'utilisateur de l'appareil doit accepter tout brouillage radioélectrique subi, même si le brouillage est susceptible d'en compromettre le fonctionnement.

#### RF Exposure Information (SAR) :

The SAR limit of USA (FCC) is 1.6W/Kg averaged over one gram of tissue. Product Type: Efergy Pro Gateway, (FCC ID: XRQEFS008) has also been tested against this SAR limit. The device was test for typical body-worn operations with the back of tracker kept 5mm from the body.

The SAR limit of IC is 1.6W/Kg averaged over one gram of tissue. Product Type: Efergy Pro Gateway, model number: EFS008, glow-rfw-01 (IC: 8612A-EFS008) has also been tested against this SAR limit. The device was test for typical body-worn operations with the back of tracker kept 5mm from the body



For more info visit

**[efergy.com/efergypro](https://efergy.com/efergypro)**