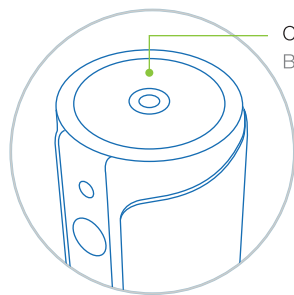
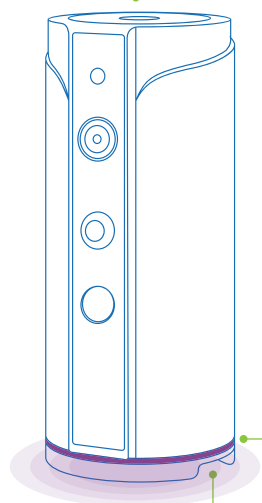


## Get familiar with the Carehub system Familiarízate con el sistema Carehub



Call button  
Botón de llamada

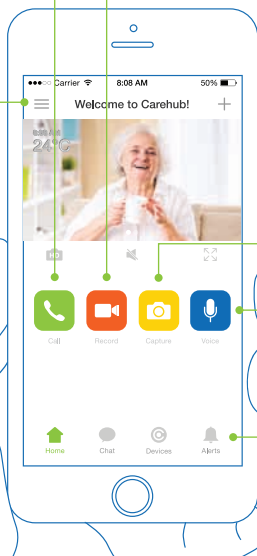


LED Ambient Light  
Luz LED

Go to menu  
Ir al menú

Make calls  
Hacer llamadas

Record video  
Grabar video



Capture image  
Capturar imagen

Send voice messages  
Enviar mensajes de voz

View alert  
Ver alertas

### Call button functionalities Funciones del Botón de llamada

Function Función	Description Descripción
	Press to make calls to the app admin account Pulsa el botón para llamar a la aplicación del administrador
	Press and hold until you hear a beep, then record a voice message to the group chat Para enviar un mensaje de voz al grupo, mantén pulsado el botón hasta escuchar un beep, luego graba el mensaje
	When the device is ringing, press to answer the incoming call Cuando escuches una llamada entrante, presiona el botón para contestar
	When the LED is flashing purple, it means you have a voice message or a reminder. Press the <b>Call button</b> to play it Cuando la <b>Luz LED</b> es intermitentemente, significa que tienes un mensaje de voz o un recordatorio. Pulsa el <b>Botón de llamada</b> para reproducirlo

### What does the LED Ambient light mean? ¿Qué significa la luz LED?

Colour Color	Status Estado	Description Descripción
	Solid Sólido	The device is online El dispositivo está conectado
	Flashing Intermitente	Network may be unstable Posiblemente red inestable
	Flashing Intermitente	It means you have an incoming call, a new voice message or a pending reminder. Press the Push button to listen. Significa que tienes una llamada entrante, nuevos mensaje de voz o recordatorios pendientes. Presiona el botón de tu dispositivo para escuchar.
	Flashing Intermitente	Network disconnected Sin conexión a red

brought to you by



Visit our website

Visita nuestra página web

[www.efergy.com/carehub](http://www.efergy.com/carehub)

Customer Service and Technical Support

Atención al cliente y Soporte Técnico

[support@efergy.com](mailto:support@efergy.com)

Designed in UK / Made in the PRC

Diseñado en el Reino Unido / Fabricado en la RPC

For indoor use only

Sólo para uso en interiores



# carehub

User Manual  
Manual de Usuario

Download and install the app  
Descarga e instala la aplicación



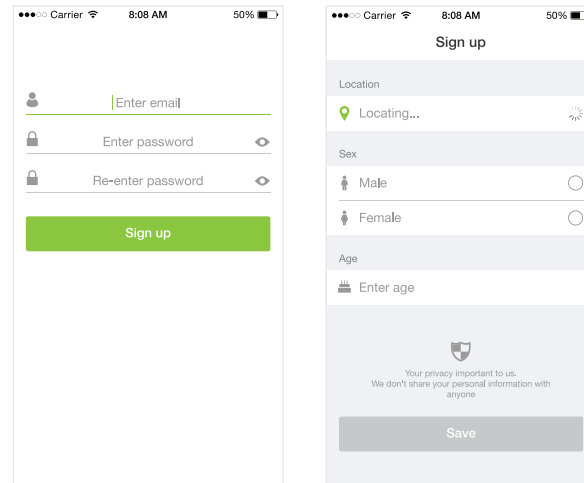
Efergy Carehub



Make sure your phone is connected to the Wi-Fi network in the area where the Carehub device is. Download the latest version of the Carehub app from the Apple App Store® or Google Play™ by typing '**Efergy Carehub**'. You can also use your phone to scan the QR code above.

Conéctate a la red Wi-Fi en la que instalarás el dispositivo Carehub. Descarga e instala la última versión de la aplicación Carehub en el Apple App Store® o Google Play™ buscando "**Efergy Carehub**", o escanea el código QR de la parte superior.

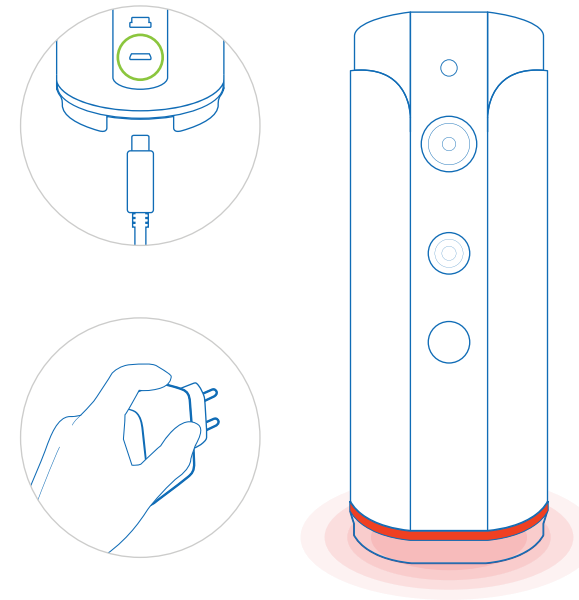
Sign up  
Regístrate



Complete the signup. Make sure you have your Wi-Fi network password in hand and ensure your Carehub's power cable is able to reach a power outlet.

Completa el proceso de registro. Asegúrate de tener la contraseña de la red Wi-Fi a mano y que el cable de alimentación del carehub pueda llegar a una toma de corriente.

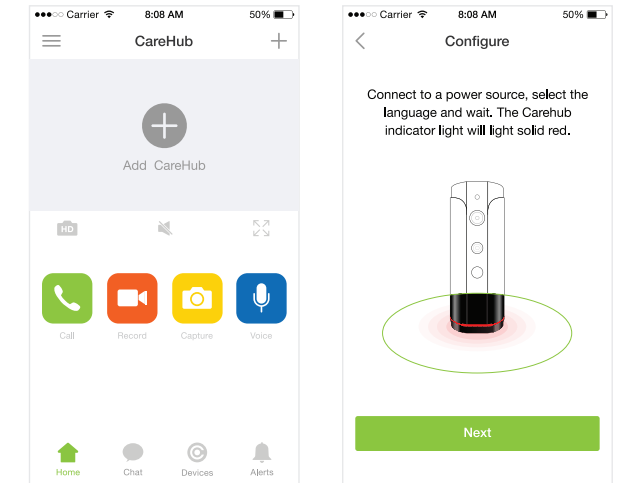
Place the Carehub  
Ubica el Carehub



Use the USB cable and power adaptor to plug it into a power outlet. The LED Ambient Light will change colour and you'll hear a welcome message to select your language: '**Welcome to the Carehub, to select english press the Call button on the top of your device now**'. Press the button and the LED will light solid red, that means it is ready for configuration.

Utiliza el adaptador de cable USB y de alimentación incluido para conectarlo a una toma de corriente. La luz LED cambiará de color y escucharás un mensaje de bienvenida en inglés. Espera unos instantes hasta que escuches en español: "**Bienvenido a Carehub, para Español presione el Botón de llamada ahora**". Pulsa el botón y el LED cambiará a color rojo sólido, indicando que está listo para configurar.

Follow the on screen steps  
Sigue los pasos en pantalla



Press **Add Carehub** and Follow the on-screen steps. The app will guide you to complete the configuration.

Selecciona **Añadir Carehub** y sigue los pasos indicados en la pantalla. La aplicación te guiará hasta completar la configuración.

## **FCC statement**

This device complies with Part 15 of the FCC Rules: Operation is subject to the following two conditions:

1. This device may not cause harmful interference and
2. This device must accept any interference that is received, including any interference that may cause undesired operation.

This device is acting as slave and operating in the 2.4 GHz (2412 ~2462 MHz) band.

Ad Hoc function is supported but not able to operate on non-US frequencies. Do not use the device with the environment which below minimum -10 °C or maximum over 50°C .

**NOTE:** This equipment has been tested and found to comply with the limits for a Class B digital device, pursuant to part 15 of the FCC Rules. These limits are designed to provide reasonable protection against harmful interference in a residential installation. This equipment generates uses and can radiate radio frequency energy and, if not installed and used in accordance with the instructions, may cause harmful interference to radio communications. However, there is no guarantee that interference will not occur in a particular installation. If this equipment does cause harmful interference to radio or television reception, which can be determined by turning the equipment off and on, the user is encouraged to try to correct the interference by one or more of the following measures:

- Reorient or relocate the receiving antenna.
- Increase the separation between the equipment and receiver.
- Connect the equipment into an outlet on a circuit different from that to which the receiver is connected.
- Consult the dealer or an experienced radio/TV technician for help

Changes or modifications to this unit not expressly approved by the party responsible for compliance could void the user's authority to operate the equipment.