

WYÜR

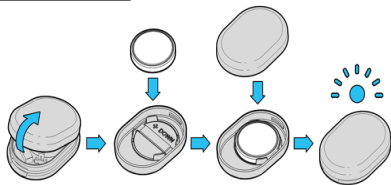


**NORTH POLE
ENGINEERING**

WYÜR, pronounced "wire", is designed to allow cyclists, triathletes, and fitness enthusiasts a simple means to connect fitness sensors to mobile devices, cycling computers, fitness equipment, and wearables used while exercising.

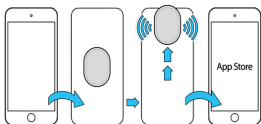


BATTERY CHANGE:



GETTING STARTED

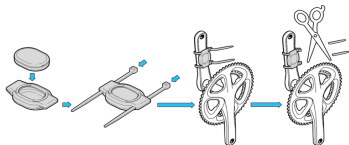
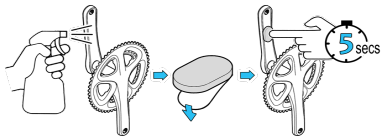
1. Download the Configurez app from the iOS App Store or Google Play store.
2. **WYÛR** is shipped in a deep sleep state. To wake **WYÛR** place it on the back of your NFC capable phone and move it until **WYÛR** wakes as indicated by the beep and double LED flash. For a full listing of the LED functions, please visit the support section at www.npe.fit.



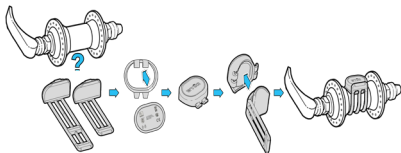
***NOTE:** If you have trouble waking the device with NFC, open **WYÛR** by removing the cover, and then re-install the cover. This performs a battery reset and wakes **WYÛR**.

3. Once awake, pair **WYÛR** to the Configurez app for setup and configuration.
4. Once paired, allow all permissions from **WYÛR** in your phone's settings.
5. **WYÛR** comes with mounting accessories including shoe clip, wheel/stem mount, VHB tape, and silicon holder. The following are examples some of the mounting options available for **WYÛR**.

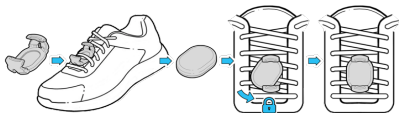
For use as a cycling cadence sensor, **WYÛR** can be mounted by either the supplied VHB tape or silicon holder, as pictured below:



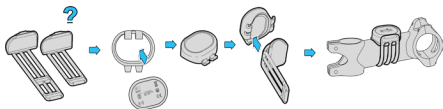
For use as a cycling speed sensor, **WYÛR** can be mounted to either the front or rear hub as pictured below:



For use as a footpod, **WYÛR** can be attached to your shoe with the supplied shoe clip, as pictured below:



For other cycling applications, **WYÛR** can be attached to your bicycle stem as pictured below:



Any Questions?

Please contact us at support@npe-inc.com or visit our Help Center: <https://npe-inc.zendesk.com/hc/en-us>.

Range of WYÛR

To ensure good connectivity between **WYÛR**, it should be within 10-20 feet of your sensors and mobile device, wearable, or cycling computer or fitness equipment.

IP RATING

WYÛR is water and dust proof to IEC Standard 60529 IPX7. It can be submersed in 1 meter of water for 30 minutes. Prolonged submersion can cause damage to **WYÛR**.

NOTE: If using **WYÛR** as a 5kHz transmitter, we recommend setting **WYÛR** on the fitness equipment console for best 5kHz transmission.

Battery Caution

This product contains a CR2032 coin cell battery. **DO NOT INGEST BATTERY. CHEMICAL BURN HAZARD.** If the battery is swallowed, it can cause severe internal burns in just 2 hours and can lead to death. Keep new and used batteries away from children. If the battery compartment does not close securely, stop using the product and keep it away from children. If you think a battery might have been swallowed or placed inside any part of the body, seek immediate medical attention.

Radio Frequency Approvals

The WYÛR product has received regulatory approvals in the United States (FCC), Canada (IC), and European Union (CE). You must use WYÛR in accordance with all instructions provided by the North Pole Engineering, which includes installation and/or operating conditions necessary for compliance.

United States

This device complies with part 15 of the FCC Rules. Operation is subject to the following two conditions: (1) This device may not cause harmful interference, and (2) this device must accept any interference received, including interference that may cause undesired operation. Changes or modifications not expressly approved by the party responsible for compliance could void the user's authority to operate the equipment. This equipment has been tested and found to comply with the limits for a Class B digital device, pursuant to Part 15 of the FCC Rules. These limits are designed to provide reasonable protection against harmful interference in a residential installation. This equipment generates, uses and can radiate radio frequency energy and, if not installed and used in accordance with the instructions, may cause harmful interference to radio communications. However, there is no guarantee that interference will not occur in a particular installation.

If this equipment does cause harmful interference to radio or television reception, which can be determined by turning the equipment off and on, the user is encouraged to try to correct the interference by one or more of the following measures:

- Reorient or relocate the receiving antenna.
- Increase the separation between the equipment and receiver.
- Connect the equipment into an outlet on a circuit different from that to which the receiver is connected.
- Consult the dealer or an experienced radio/TV technician for help"

Europe

Hereby, North Pole Engineering declares that WYÛR is in compliance with the essential requirements and other relevant provisions of Directive 2014/53/EU. The declaration of conformity may be consulted at <http://npe-inc.com/cableinfo/wp-content/uploads/2017/11/EU-Declaration-of-Conformity.pdf>
Frequency range: 2402-2480MHZ Maximum output power: <1mW

Canada

This device complies with Industry Canada's licence-exempt RSSs. Operation is subject to the following two conditions:

- (1) This device may not cause interference; and
- (2) This device must accept any interference, including interference that may cause undesired operation of the device."

Le présent appareil est conforme aux CNR d'Industrie Canada applicables aux appareils radio exempts de licence. L'exploitation est autorisée aux deux conditions suivantes:

- 1) l'appareil ne doit pas produire de brouillage;
- 2) l'appareil doit accepter tout brouillage radioélectrique subi, même si le brouillage est susceptible d'en compromettre le fonctionnement.



WARNING: This product can expose you to chemicals including bisphenol A (BPSA) which are known to the State of California to cause cancer and birth defects or other reproductive harm. For more information go to www.P65Warnings.ca.gov.



Radio Certification IDs:

FCCID: XRH-NPE110

IC: 11922A-NPE110



**NORTH POLE
ENGINEERING**