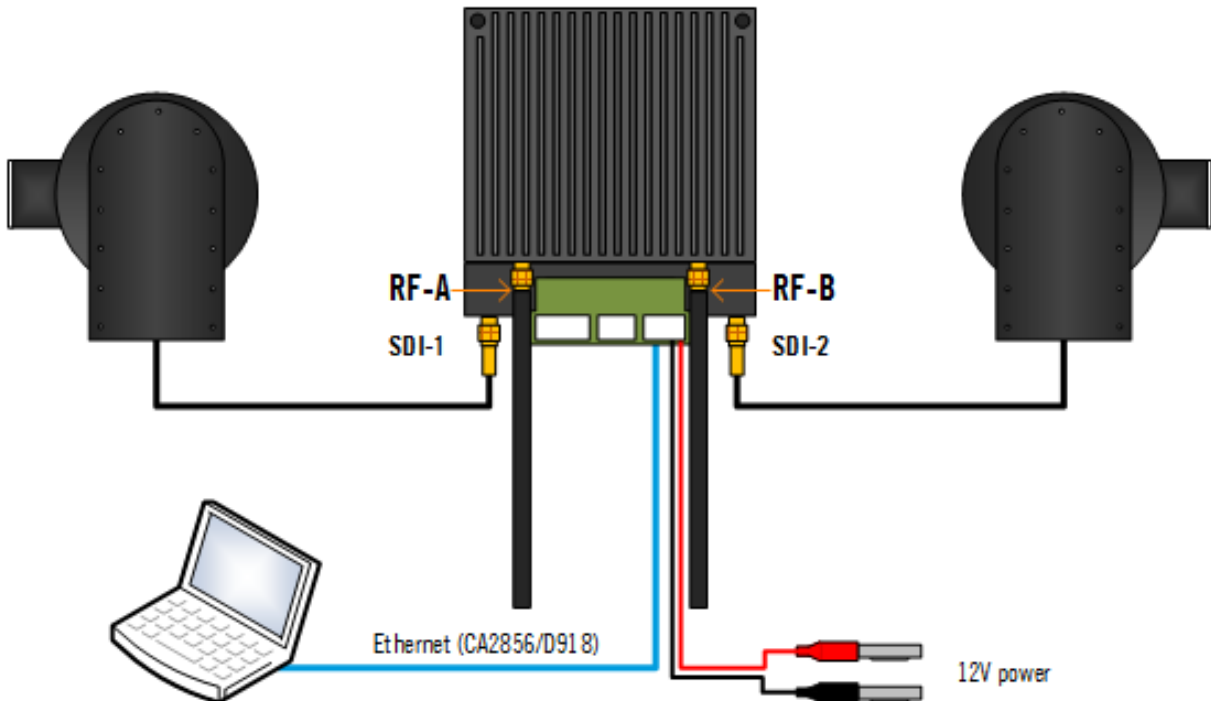


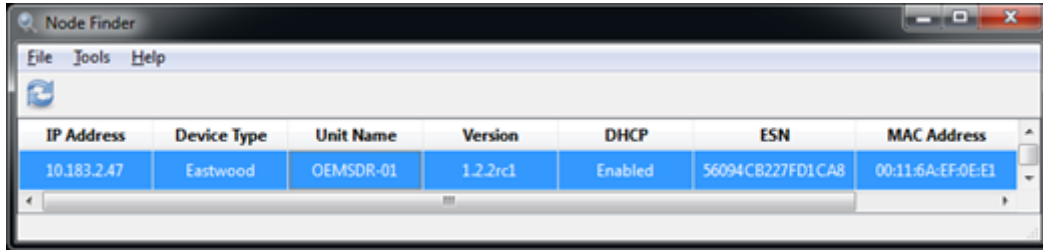
No	Item	Connection
1	34-way header	1. Connect D1804 breakout PCB. 2. Connect J4 (ETHERNET) to a PC or network Ethernet port via CA2856 and D918. 3. Connect J2 (PWR) to 12V power via CA3043.
2	SMP 50 ohm jack	RF-A COFDM antenna.
3	SMP 50 ohm jack	RF-B COFDM antenna.
4	MCX jack	SDI-1 video input.
5	MCX jack	SDI-2 video input.



**CAUTION:** The SOL8SDR-C will need consideration for heatsinking or fan cooling as part of the installation.

The SOL8SDR-C IP address can be established using DTC’s Node Finder application.

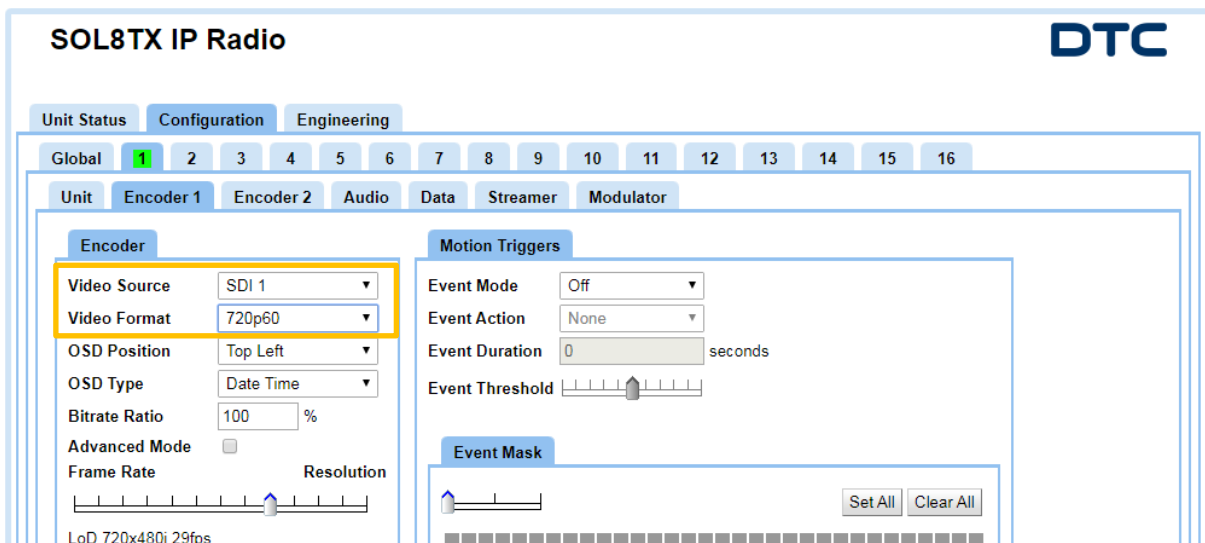
If DHCP settings need to be disabled and a fixed address applied, right click on the device to reconfigure.



Double click the device on Node Finder to open web browser communications.

On authentication, leave the Username blank and enter the Password as **Eastwood**.

Go to the **Configuration>Preset>Encoder** tab and set the Video Source and Format to match the attached camera. Click **Apply** at the bottom of the page to save the settings.



Go to the **Configuration>Preset>Modulator** tab and make the settings for your system, highlighted below.

Click **Apply** at the bottom of the page to save the settings. These settings **must** be matched at the receiver.

