

Wi-Fi 2.4GHz

Frequency: 2412 MHz; Duty Cycle: 1:1; Room Ambient Temperature: 24.0°C; Liquid Temperature: 23.0°C

Medium parameters used (interpolated): $f = 2412$ MHz; $\sigma = 1.939$ S/m; $\epsilon_r = 50.758$; $\rho = 1000$ kg/m³

DASY5 Configuration:

- Area Scan Setting: Find Secondary Maximum Within: 2.0 dB and with a peak SAR value greater than 0.0012W/kg
- Electronics: DAE4 Sn1239; Calibrated: 7/27/2017
- Probe: EX3DV4 - SN3902; ConvF(7.89, 7.89, 7.89); Calibrated: 5/30/2017;
- Sensor-Surface: 1.4mm (Mechanical Surface Detection)
- Phantom: ELI A v5.0; Type: QD OVA 002 AA; Serial: 1194

Extremity/802.11b_ch 1/Area Scan (7x7x1): Measurement grid: dx=12mm, dy=12mm

[Info: Interpolated medium parameters used for SAR evaluation.](#)

Maximum value of SAR (measured) = 0.135 W/kg

Extremity/802.11b_ch 1/Zoom Scan (7x7x7)/Cube 0: Measurement grid: dx=5mm, dy=5mm, dz=5mm

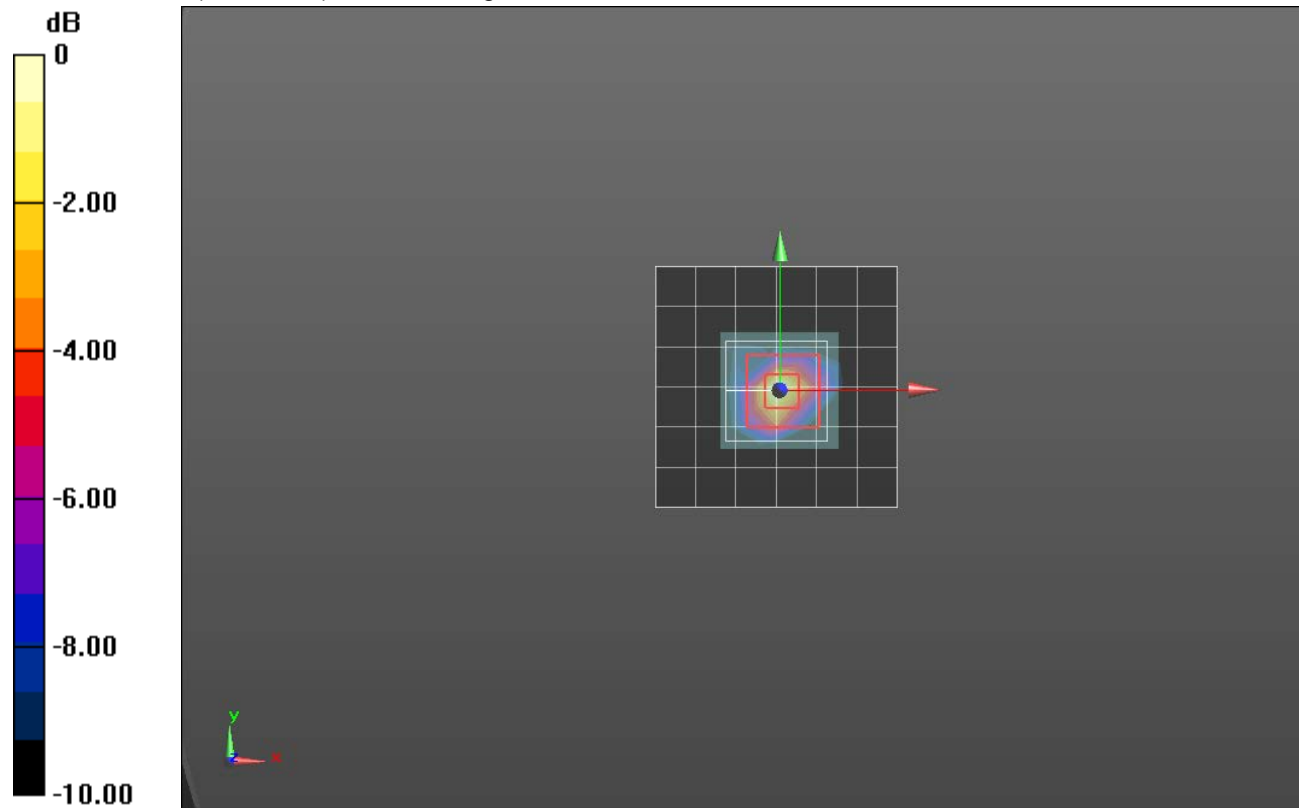
Reference Value = 7.539 V/m; Power Drift = 0.18 dB

Peak SAR (extrapolated) = 0.201 W/kg

SAR(1 g) = 0.059 W/kg; SAR(10 g) = 0.016 W/kg

[Info: Interpolated medium parameters used for SAR evaluation.](#)

Maximum value of SAR (measured) = 0.128 W/kg



0 dB = 0.128 W/kg = -8.93 dBW/kg