

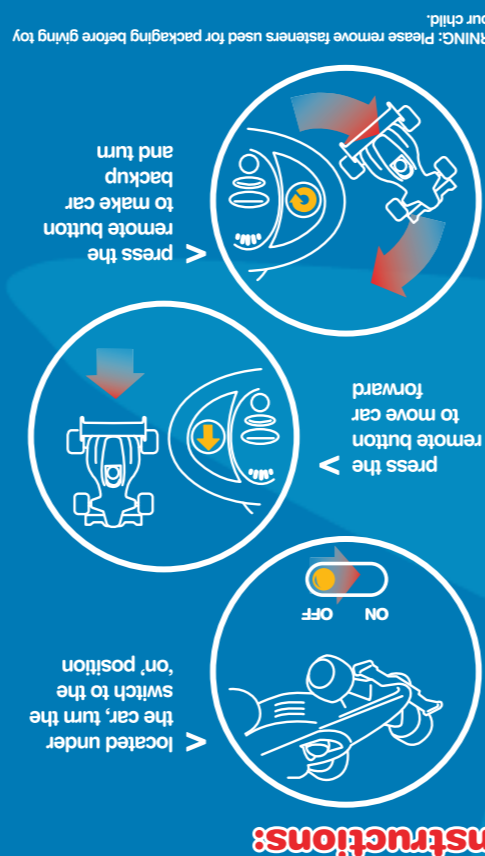
HOLLY
Kids



radio controlled!

★ my R/C formula racer

start your engines and race to the finish line!



Instructions:



Racer cars
available in
associated colors
27 kHz and
49 kHz.



2-PIECE SET INCLUDES:
1 racer car, 1 remote control
* Great for imaginative play
* Develops hand-eye coordination
* Backwards and turns
* Racer car moves forward.
* Kid-friendly and easy controls

★ my R/C formula racer

start your engines and race to the finish line!

HOLLY
Kids

HOLLY
Kids

★ my R/C formula racer

start your engines and race to the finish line!

HOLLY
Kids



radio controlled!

★ my R/C formula racer

start your engines and race to the finish line!

HOLLY
Kids



★ my R/C formula racer

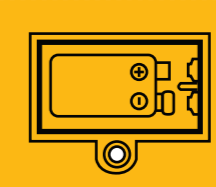
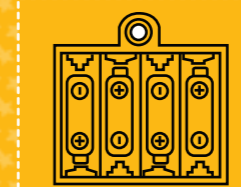


HOLLY
Kids



★ my R/C formula racer

start your engines and race to the finish line!



Requires 4 "AA" (R6) 1.5V batteries and 1 "UE" 9V battery (Not included)

1-POWER SUPPLY

Installing batteries

- Before inserting batteries, make sure the toy is turned off.
- Open the compartment underneath the toy using a screwdriver.
- Insert batteries making sure that the polarities match those shown on the compartment.
- Carefully close and secure the compartment cover to ensure it cannot be opened by a child.

2- MAINTENANCE

- To clean the toy, use a lightly damp cloth.
- Avoid prolonged exposure of the toy to direct sunlight and other sources of heat.
- Store the toy in a dry location.
- This toy is manufactured from shock-resistant materials. Nevertheless, avoid shocks against hard surfaces whenever possible.

WARNING: All packaging and packing materials such as wires, plastic sheeting and the package itself are not parts of this toy and must be removed securely before giving this toy to a child.

For maximum performance, we recommend the exclusive use of new alkaline batteries. We do not recommend using rechargeable batteries as they often do not provide sufficient power of the toy.

- Do not mix new and used batteries.
- Do not mix alkaline, standard (Carbon-Zinc), or rechargeable (Nickel-Cadmium) batteries.
- Remove all batteries at one time.
- Batteries are to be inserted with the correct polarity observing the plus "+" and minus "-" marks on the battery and battery box.
- Non-rechargeable batteries are not to be recharged.
- Exhausted batteries are to be removed from the toy.
- The supply terminals are not to be short-circuited.

IMPORTANT NOTE:

- Battery should be replaced by an adult.
- Remove batteries if the toy is not used for a prolonged period of time.
- Responsibly discard any used batteries from the toy.
- Do not throw them into a fire nor into nature.
- Contents & color may vary.
- Please retain the packaging as it contains important information.

Made in Huizhou, China
© 2010 HollyKids™
HollyKids is a trademark
of Holly & Company™
Distributed by Holly & Company™
P.O. Box 781196
Los Angeles, CA 90016
U.S.A.
Conforms to ASTM F963-08
03/07/2010

HollyKids™

21113



4 897030 890420

Proof of Purchase



Holly & Company
P.O. Box 781196
Los Angeles, CA 90016
U.S.A.

FCC ID: XR4-NOVARCF1
USER MANUAL

This device complies with Part 15 of the FCC Rules. Operation is subject to the following two conditions : (1) this device may not cause harmful interference, and (2) this device must accept any interference received, including interference that may cause undesired operation.

Warning: Changes or modifications to this unit not expressly approved by the party responsible for compliance could void the user's authority to operate the equipment.

NOTE: This equipment has been tested and found to comply with the limits for a Class B digital device, pursuant to Part 15 of the FCC Rules. These limits are designed to provide reasonable protection against harmful interference in a residential installation. This equipment generates, uses and can radiate radio frequency energy and, if not installed and used in accordance with the instructions, may cause harmful interference to radio communications.

However, there is no guarantee that interference will not occur in a particular installation. If this equipment does cause harmful interference to radio or television reception, which can be determined by turning the equipment off and on, the user is encouraged to try to correct the interference by one or more of the following measures :

- ☐ Reorient or relocate the receiving antenna.
- ☐ Increase the separation between the equipment and receiver.
- ☐ Connect the equipment into an outlet on a circuit different from that to which the receiver is connected.
- ☐ Consult the dealer or an experienced radio / TV technician for help.



Holly & Company
P.O. Box 781196
Los Angeles, CA 90016
U.S.A.

FCC ID: XR4-NOVAPLAY
USER MANUAL

This device complies with Part 15 of the FCC Rules. Operation is subject to the following two conditions : (1) this device may not cause harmful interference, and (2) this device must accept any interference received, including interference that may cause undesired operation.

Warning: Changes or modifications to this unit not expressly approved by the party responsible for compliance could void the user's authority to operate the equipment.

NOTE: This equipment has been tested and found to comply with the limits for a Class B digital device, pursuant to Part 15 of the FCC Rules. These limits are designed to provide reasonable protection against harmful interference in a residential installation. This equipment generates, uses and can radiate radio frequency energy and, if not installed and used in accordance with the instructions, may cause harmful interference to radio communications.

However, there is no guarantee that interference will not occur in a particular installation. If this equipment does cause harmful interference to radio or television reception, which can be determined by turning the equipment off and on, the user is encouraged to try to correct the interference by one or more of the following measures :

- ☐ Reorient or relocate the receiving antenna.
- ☐ Increase the separation between the equipment and receiver.
- ☐ Connect the equipment into an outlet on a circuit different from that to which the receiver is connected.
- ☐ Consult the dealer or an experienced radio / TV technician for help.