

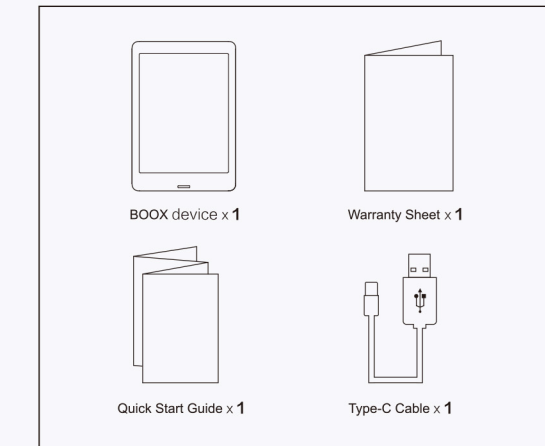
BOOX Nova Series

Quick Start Guide

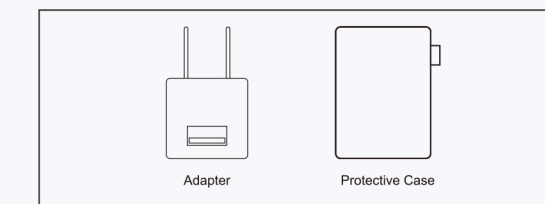
Please refer to the pre-loaded User Manual or official website technical support for detail guidance
www.boox.com

BOOX Nova SMART E-READER

Product & Accessories:



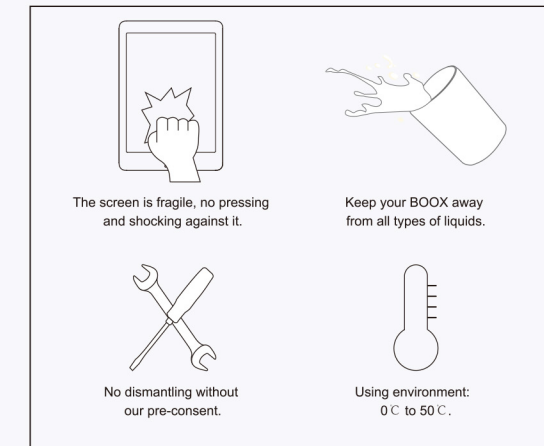
Optional Accessories:



01

BOOX Nova SMART E-READER

Safety:



Declaration:

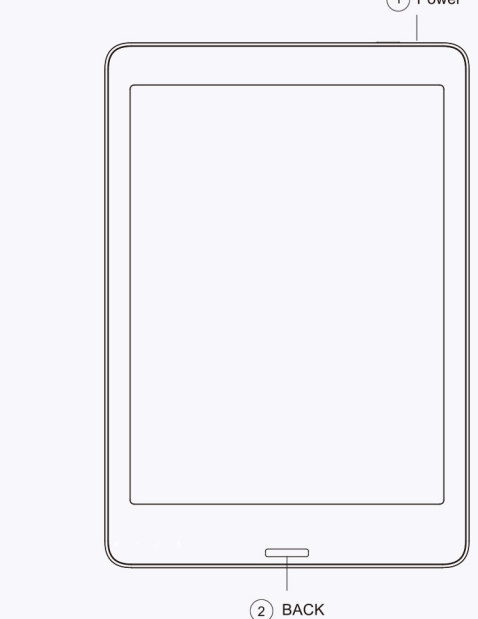
This guide can not contain enough information limited pages, please refer to the User Manual of each model for detail instruction. Product pictures in this guide are for reference only. Product ID including but not limited to colors and functions are subject to the actual product.

Onyx International Inc. reserves the right to modify the content of the Quick Start Guide and User Manual without further notice.

02

BOOX Nova SMART E-READER

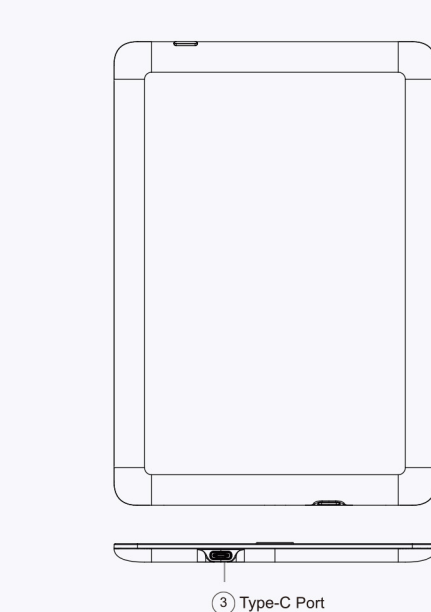
Front View:



03

BOOX Nova SMART E-READER

Back View:

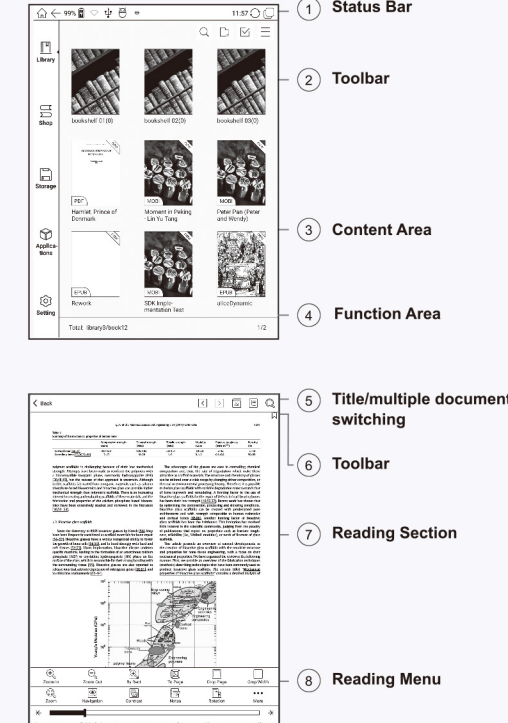


When your Boox is off, press the power button and hold for 2 seconds to turn the device on/off; When your Boox is on, press the power button and release quickly for letting the device go stand by or waking the device up.

04

BOOX Nova SMART E-READER

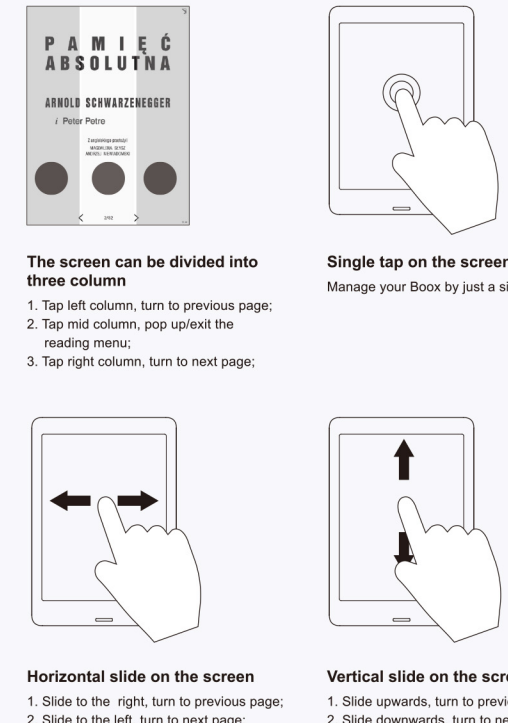
Interface Introduction:



05

BOOX Nova SMART E-READER

Touch Guide:



06

BOOX Nova SMART E-READER

FAQS

- 1. How to turn on/off the device**
1.1 When your BOOX is off, press power button for 3-5 seconds to turn the device on;
1.2 When your BOOX is on, press power button for 3-5 seconds to turn the device off;
- 2. How to charge**
2.1 Recharge your BOOX by connecting it with PC directly;
2.2 Recharge your BOOX by connecting it with adapter (optional accessory);
2.3 Orange light is on when your BOOX is charging; the light will be off after battery is fully charged;
2.4 Full single charge will take around 3 hours;
- 3. How to transfer data**
3.1 Transfer data by connecting your BOOX with PC via Type-C;
3.2 Transfer data by third-party sync apps between PC and the device via WIFI;
3.3 Download data or read online by browsing via WIFI;
3.4 Download data or read online by Log-in of reading APP via WIFI;
- 4. How to update locally**
4.1 Download the update package and put it into root directory of local storage ;
4.2 Update your firmware via OTA online ;
- Note:** 1. OTA update only supports some countries or areas. Please consult the local distributor.
2. Please connect the device with power source or PC to make sure of enough power for update;
- 5. How to preserve your BOOX**
5.1 Use hard cover to avoid direct shocking or pressing against the screen;
5.2 Put the screen side downwards when your BOOX is not in use; do not put anything in-between of the screen and other flat surface;
5.3 Dont pile up or store heavy stuff over the device;
5.4 Keep your BOOX away from all types of liquids.

BOOX Nova SMART E-READER

FCC Caution.

- § 15.19 Labelling requirements.**
This device complies with part 15 of the FCC Rules. Operation is subject to the following two conditions: (1) This device may not cause harmful interference, and (2) this device must accept any interference received, including interference that may cause undesired operation.
- § 15.21 Changes or modification warning.**
Any Changes or modifications not expressly approved by the party responsible for compliance could void the user's authority to operate the equipment.
- § 15.105 Information to the user.**
Note: This equipment has been tested and found to comply with the limits for a Class B digital device, pursuant to part 15 of the FCC Rules. These limits are designed to provide reasonable protection against harmful interference in a residential installation. This equipment generates uses and can radiate radio frequency energy and, if not installed and used in accordance with the instructions, may cause harmful interference to radio communications.
However, there is no guarantee that interference will not occur in a particular installation. If this equipment does cause harmful interference to radio or television reception, which can be determined by turning the equipment off and on, the user is encouraged to try to correct the interference by one or more of the following measures:
-Reorient or relocate the receiving antenna.
-Increase the separation between the equipment and receiver.
-Connect the equipment into an outlet on a circuit different from that to which the receiver is connected.
-Consult the dealer or an experienced radio/TV technician for help.

Made in China
©Onyx International Inc. All rights reserved.