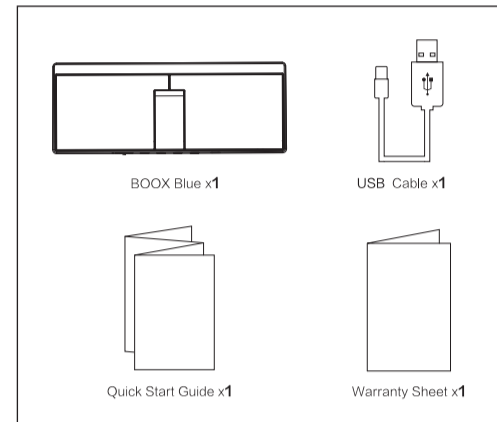
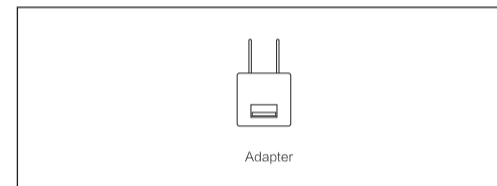


BOOX Blue

Product & Accessories:

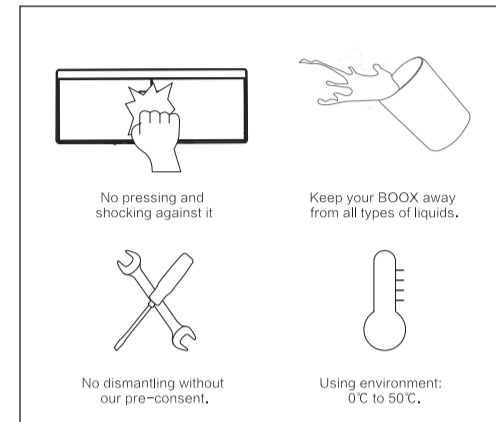


Optional Accessories:



BOOX Blue

Safety:



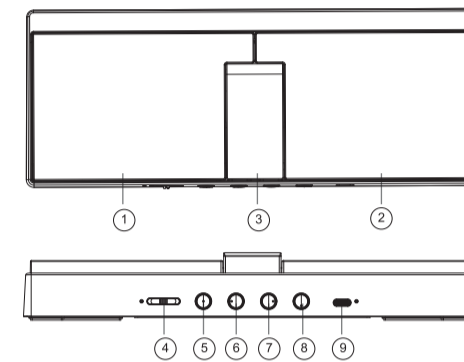
Declaration:

This guide can not contain enough information limited pages, please refer to the User Manual of each model for detail instruction. Product pictures in this guide are for reference only. Product ID including but not limited to colors and functions are subject to the actual product.

Onyx International Inc. reserves the right to modify the content of the Quick Start Guide and User Manual without further notice.

BOOX Blue

Button Introduction



- ① Prev. ② Next ③ Back
- ④ On/Off ⑤ Mode ⑥ P1/P2 (Single/double page)
- ⑦ Front light ⑧ Screenshot ⑨ Charging port

Remarks: "Single/double page", "Front light", "Screenshot" only work for BOOX NeoReader

BOOX Blue

Features

- 1.1 Power on: Switch On/Off button to left. Purple indicator lights up for 2 sec.
- 1.2 Connect: Press any key of Boox Blue. Connect it on your device after it detects "Boox blue".
- 1.3 Power off: Switch On/Off button to right.

2.Mode

You can switch among 4 modes (the pedal buttons corresponds keys on keyboard).

	Prev.	Next
Mode 1	Left arrow	Right arrow
Mode 2	Up arrow	Down arrow
Mode 3	Page up	Page down
Mode 4	Volume up	Volume down

3.Switch mode instruction

- 3.1 Switch mode: long-press the mode button until a red indicator blinks once, and loose the button, a blue indicator blinks. The mode is successfully switched to Mode 1; Long press to light up the red indicator twice for Mode 2, Go next and so on.
- 3.2 Check mode: short-press the mode button, If the red indicator blinks once, it means the mode is in Mode 1. It blinks twice for Mode 2, and so on.

4.Compatible with Android and IOS.

BOOX Blue

WARRANTY:

1.Warranty Items

Within 15 days from the date of purchase, any complains caused by product's performance problems under normal operating conditions, without overhaul, can be accepted to replace the product by a new one of the same type or maintenance service.

Within 1 year from the date of purchase, any complains caused by product's performance problems under normal operating conditions, without overhaul, can be accepted the maintenance service;

Within 3 year from the date of purchase, any complains caused by product's performance problems, can be accepted by fee-based maintenance service

2. This warranty card automatically expires under the following circumstances.

But customer can still enjoy fee-based maintenance services

- 2.1 No Onyx Boox trademarks disqualified product;
- 2.2 Disassembling, repair the failure product without authorization;
- 2.3 The machine series number is missing or altered;
- 2.4 The fault or damage caused by man-made or abnormal operations (subject to the environment too wet or too dry, unstable voltage or current, zero ground voltage is too large, etc)
- 2.5 For all damages from outside force including liquid, crack, improper plugging, insect pests, etc;
- 2.6 Natural consumption (the nature consumption of shell, patch components, wear and aging);
- 2.7 Damage caused by force majeure (e.g fire, flood, earthquake and other disasters);
- 2.8 The failure product NOT belonging to Onyx.

BOOX Blue

3.Maintenance Services Notices

User must send the product for repairing or maintenance. Before sending it, please contact the After-sales Department of Onyx to ascertain the cause of fault and fill up the maintenance application form (this form can be downloaded from Onyx official website). The original or a copy of purchase voucher (invoice) is needed when consumer sends the product to After-sales Department. The service of "warranty" or maintenance is applicable to electrical components only (hardware board and screen). It does not include the shell, packing or other accessories.

4.Particular declaration

As the written information, Onyx shall NOT be responsible for any mechanical failure or a result of direct and indirect losses (such as loss of business information, etc.) caused by a software problem. The native consumer is protected by the consumer protection laws of his local country. If consumer buys product in a foreign country, then the consumer must follow the foreign country's consumer protection law.

FCC Statement

This device complies with Part 15 of the FCC rules. Operation is subject to the following two conditions: 1) this device may not cause harmful interference, and 2) this device must accept any interference received, including interference that may cause undesired operation.

Note: This equipment has been tested and found to comply with the limits for a Class B digital device, pursuant to part 15 of the FCC Rules. These limits are designed to provide reasonable protection against harmful interference in a residential installation. This equipment generates uses and can radiate radio frequency energy and, if not installed and used in accordance with the instructions, may cause harmful interference to radio communications. However, there is no guarantee that interference will not occur in particular installation. If this equipment does cause harmful interference to radio or television reception, which can be determined by turning the equipment off and on, the user is encouraged to try to correct the interference by one or more of the following measures:

- Reorient or relocate the receiving antenna.
- Increase the separation between the equipment and receiver.
- Connect the equipment into an outlet on a circuit different from that to which the receiver is connected.
- Consult the dealer or an experienced radio/TV technician for help.

Changes or modifications not expressly approved by the party responsible for compliance could void the user's authority to operate the equipment.

FCC Radiation Exposure Statement

This device complies with RF radiation exposure limits set forth for an uncontrolled environment. This transmitter must not be co-located or operating in conjunction with any other antenna or transmitter.