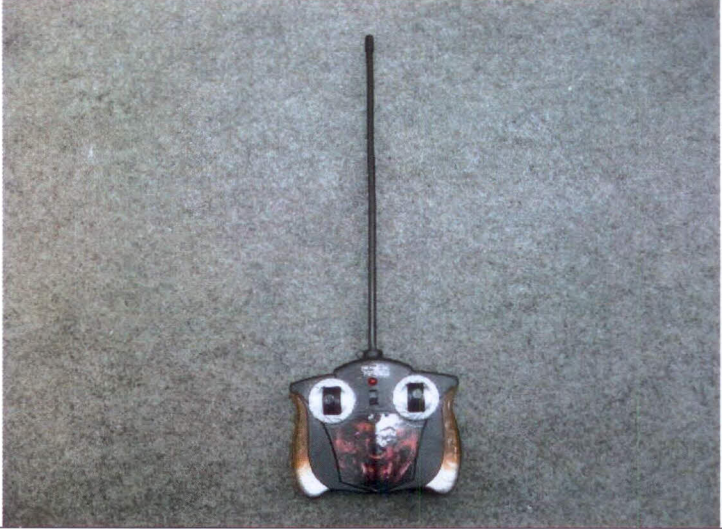






TEST REPORT No.: (5212)147-0122

TEST REPORT

To:	NKOK, INC.	To:	-
Attn:	LANNY HALIM	Attn:	-
Address:	5354 IRWINDALE AVE, UNIT A, IRWINDALE, CA 91706	Address:	-
Fax:	626 330 1199	Fax:	-
E-mail:	kohsche@nkok.com / lanny@nkok.com / stephen.lhhtoy@gmail.com	E-mail:	-
Folder No.:	--		
Factory Name:	--		
Location:	--		
Product:	Twisted Metal R/C Stunt Axel Model No. 672		
	Sample No:	(5212)147-0122	
	Test Date(s):	March 28, 2012 to June 18, 2012	
	Test Requested:	FCC Part 15 – 2011	
	Test Method:	ANSI C63.4 – 2009	
	FCC ID:	XQPSY121149TX	
<p>The results given in this report are related to the tested specimen of the described electrical apparatus.</p> <p>CONCLUSION: The submitted sample was found to <u>COMPLY</u> with requirement of FCC Part 15 Subpart C.</p>			
Authorized Signature:			
			
Reviewed by: Keith Yeung		Approved by: Steven Tsang	
Date: June 27, 2012		Date: June 27, 2012	

BUREAU VERITAS HONG KONG LIMITED –
Kowloon Bay Office
 1/F Pacific Trade Centre,
 2 Kai Hing Road, Kowloon Bay,
 Kowloon, HONG KONG
 Tel: +852 2331 0888
 Fax: +852 2331 0889
www.cps.bureauveritas.com

This report is intended for your exclusive use. Any copying or replication of this report to or for any other person or entity, or use of our name or trademark, is permitted only with our prior written permission. Our report is limited to the test samples identified herein. The results set forth in this report are not necessarily indicative or representative of the statistical quality or characteristics of the lot from which a test sample was taken or any similar or identical product unless specifically and expressly noted. Our report includes all of the tests requested by you and the results thereof. You shall have thirty days from receipt of this report to request additional testing of the samples or to notify us of any errors or omissions relating to our report, provided, however, such notice shall be in writing and shall specifically address the issue you wish to raise. A failure to raise such issue within the prescribed time shall constitute your unqualified acceptance of the completeness of this report, the tests conducted and the correctness of the report contents.



TEST REPORT No.: (5212)147-0122

Test Result Summary

EMISSION TEST			
Test requirement: FCC Part 15 – 2011			
Test Condition	Test Method	Test Result	
		Pass	Failed
Radiated Emission Test, 9kHz to 1GHz	ANSI C63.4	<input checked="" type="checkbox"/>	<input type="checkbox"/>

Report Revision & Sample Re-submit History:

--



TEST REPORT No.: (5212)147-0122

Test Laboratory & Test Instruments List

Radiated and Conducted emissions measurements are investigated and taken pursuant to the procedures of ANSI C63.4 – 2009. An Open Area Test Site and Full Anechoic Chamber (FCC Listed Site, Registration No. 642151) are set up for investigation and located at:

BUREAU VERITAS HONG KONG LIMITED, EMC CENTRE

No. 2106-2107, 21/F., Westin Centre,
26 Hung To Road,
Kwun Tong, Kowloon,
Hong Kong

Test Instrument List

Radiated Emission

EQUIPMENT	MANUFACTURER	MODEL NO.	SERIAL NO.	CALIBRATION DUE
EMI TEST RECEIVER	R&S	ESCI	100379	18-OCT-2012
BILOG ANTENNA	SCHAFFNER	CBL6112D	25229	16-SEP-2012
OPEN AREA TEST SITE	BVCPS	N/A	N/A	07-JUL-2012
ANECHOIC CHAMBER	ALBATROSS	M-CDC	80374004499B	25-OCT-2012
COAXIAL CABLE	SUHNER	N/A	N/A	10-NOV-2012

Remarks: -

N/A: Not Applicable or Not Available

The measurement instrumentation uncertainty would be taking into consideration on each of the test result

TEST REPORT No.: (5212)147-0122

Equipment Under Test [EUT]

Description of Sample:

Product: Twisted Metal R/C Stunt Axel
Model No.: 672
Power Supply: 9Vd.c. ("6F22" size battery x 1)

Description of EUT Operation:

The Equipment Under Test (EUT) is a NKOK, INC. of Radio Control toy. It is 2 sticks & 1 switch transmitter and operating at 49.86MHz. The EUT continues to transmit sticks are being pushed or pulled, Modulation by IC, and type is pulse modulation.

The transmitter has different control:

1. Left stick – left wheel control
2. Right stick – right wheel control
3. On/Off switch – power on/off control

Antenna Requirement (Section 15.203)

The EUT is use of a permanently antenna. The antenna consists of 26cm long metal spring covered with rubber. The antenna is not replaceable or user serviceable. The requirements of S15.203 are met. There are no deviations or exceptions to the specifications.

Photo of Antenna



TEST REPORT No.: (5212)147-0122

Test Results

Radiated Emissions (Fundamental)

Test Requirement: FCC Part 15 Section 15.235
 Test Method: ANSI C63.4
 Test Date(s): 2012-06-18
 Temperature: 29.0 °C
 Humidity: 85.0 %
 Atmospheric Pressure: 100.0 kPa
 Mode of Operation: Transmission mode
 Tested Voltage: 9Vd.c. ("6F22" size battery x 1)

Test Method:

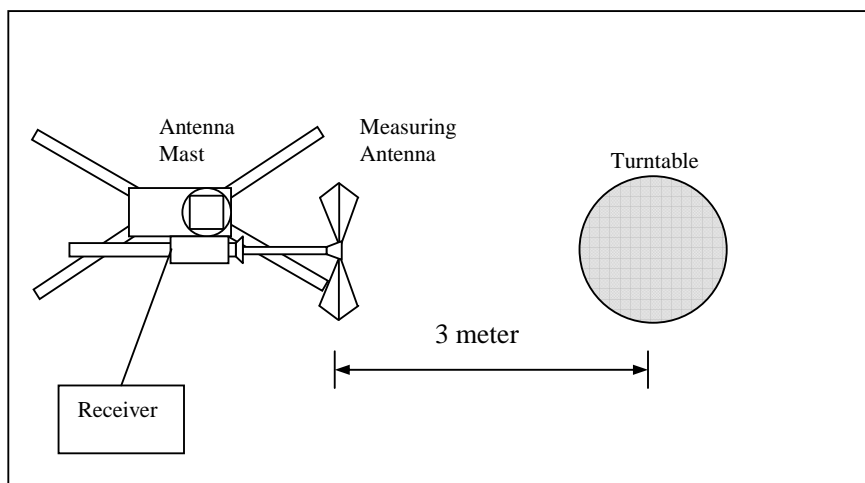
Radiated emissions measurements are investigated and taken pursuant to the procedures of ANSI C63.4 – 2009.

The equipment under test (EUT) was placed on a non-conductive turntable with dimensions of 1.5m x 1m and 0.8m high above the ground. 3m from the EUT, a broadband antenna mounting on the mast received the signal strength. During the test, each emission was maximized by: having the EUT continuously working, investigated all operating modes, rotated about all 3 axis (X, Y & Z) and considered typical configuration to obtain worst position, manipulating interconnecting cables, For battery operated equipment, the equipment tests shall be perform using new battery. The turntable was rotated to maximize the emission level. The antenna was then moving along the mast from 1m up to 4m until no more higher value was found. Both horizontal and vertical polarization of the antenna were placed and investigated.

For below 30MHz, a loop antenna with its vertical plane is place 3m from the EUT and rotated about its vertical axis for maximum response at each azimuth about the EUT. And the centre of the loop shall be 1m above the ground.

Location: The Roof, Westin Centre, 26 Hung To Road, Kwun Tong, Kowloon, Hong Kong

Test Setup: Open Area Test Site





TEST REPORT No.: (5212)147-0122

Limits for Field Strength of Fundamental Emissions [FCC 47CFR 15.235]:

Frequency Range of Fundamental [MHz]	Field Strength of Fundamental Emission [Peak] [μ V/m]	Field Strength of Fundamental Emission [Average] [μ V/m]
49.82 – 49.90	100,000 (100 dB μ V/m)	10,000 (80 dB μ V/m)

Measurement Data

Test Result of (Transmission mode): PASS

Detection mode: Peak

Frequency (MHz)	Polarity (H/V)	Antenna Factor and Cable Loss (dB/m)	Field Strength at 3m (dB μ V/m)	Limit at 3m (dB μ V/m)	Margin (dB)
49.86	H	6.5	70.4	100	-29.6

Detection mode: # Average

Frequency (MHz)	Polarity (H/V)	Antenna Factor and Cable Loss (dB/m)	Field Strength at 3m (dB μ V/m)	Limit at 3m (dB μ V/m)	Margin (dB)
49.86	H	6.5	**66.2	80	-13.8

For pulse modulated devices and using measuring equipment employing a peak detection mode, properly adjusted for such factor as pulse desensitisation.

**** Duty Cycle Correction = $20\text{Log}(0.613) = -4.2\text{dB}$**

Note: Field Strength includes Antenna Factor and Cable Loss.

Receiver setting: RBW = 100KHz
VBW = 300KHz



TEST REPORT No.: (5212)147-0122

Radiated Emissions (9kHz – 1GHz)

Test Requirement: FCC Part 15 Section 15.209
Test Method: ANSI C63.4
Test Date(s): 2012-06-18
Temperature: 29.0 °C
Humidity: 85.0 %
Atmospheric Pressure: 100.0 kPa
Mode of Operation: Transmission mode
Tested Voltage: 9Vd.c. ("6F22" size battery x 1)

Limits for Radiated Emissions [FCC 47 CFR 15.209]:

Frequency Range [MHz]	Quasi-Peak Limits [μ V/m]
1.705-30	300
30-88	100
88-216	150
216-960	200
Above960	500



**BUREAU
VERITAS**

TEST REPORT No.: (5212)147-0122

Measurement Data

Test Result of (Transmission mode): PASS

Detection mode: Quasi-Peak

Frequency (MHz)	Polarity (H/V)	Antenna Factor and Cable Loss (dB/m)	Field Strength at 3m (dB μ V/m)	Limit at 3m (dB μ V/m)	Margin (dB)
99.72	H	11.1	31.2	43.5	-12.3
149.58	H	10.2	20.3	43.5	-23.2
199.44	H	7.7	19.4	43.5	-24.1
249.30	H	12.5	21.6	46.0	-24.4
299.16	H	14.3	23.3	46.0	-22.7
349.02	H	15.6	25.1	46.0	-20.9
398.88	H	16.4	27.3	46.0	-18.7
448.74	H	17.0	26.1	46.0	-19.9
498.60	H	17.1	27.3	46.0	-18.7
548.46	H	19.0	29.9	46.0	-16.1

Frequency (MHz)	Polarity (H/V)	Antenna Factor and Cable Loss (dB/m)	Field Strength at 3m (dB μ V/m)	Limit at 3m (dB μ V/m)	Margin (dB)
99.72	V	11.1	30.6	43.5	-12.9
149.58	V	10.2	20.0	43.5	-23.5
199.44	V	7.7	19.6	43.5	-23.9
249.30	V	12.5	21.5	46.0	-24.5
299.16	V	14.3	23.5	46.0	-22.5
349.02	V	15.6	25.0	46.0	-21.0
398.88	V	16.4	27.5	46.0	-18.5
448.74	V	17.0	26.4	46.0	-19.6
498.60	V	17.1	27.3	46.0	-18.7
548.46	V	19.0	30.2	46.0	-15.8

Note: Field Strength includes Antenna Factor and Cable Loss.

Receiver setting: RBW = 100KHz
VBW = 300KHz



TEST REPORT No.: (5212)147-0122

26dB Bandwidth of Fundamental Emission

Test Requirement: FCC 47 CFR 15.235
 Test Method: ANSI C63.4
 Test Date(s): 2012-03-28
 Temperature: 24.0 °C
 Humidity: 49.0 %
 Atmospheric Pressure: 101.5 kPa
 Mode of Operation: Transmission mode
 Tested Voltage: 9Vd.c. ("6F22" size battery x 1)

Test Method:

The bandwidth is measured at an amplitude level reduced from the reference level by a specified ratio. The reference level is the level of the highest amplitude signal observed from the transmitter at the fundamental frequency. Once the reference level is established, the equipment is conditioned with typical modulating signal to produce the worst-case (i.e. the widest) bandwidth.

Limits for 26dB Bandwidth of Fundamental Emission:

Frequency [MHz]	26dB Bandwidth [KHz]	Limits [MHz]
49.86	25.6	within 49.82-49.90

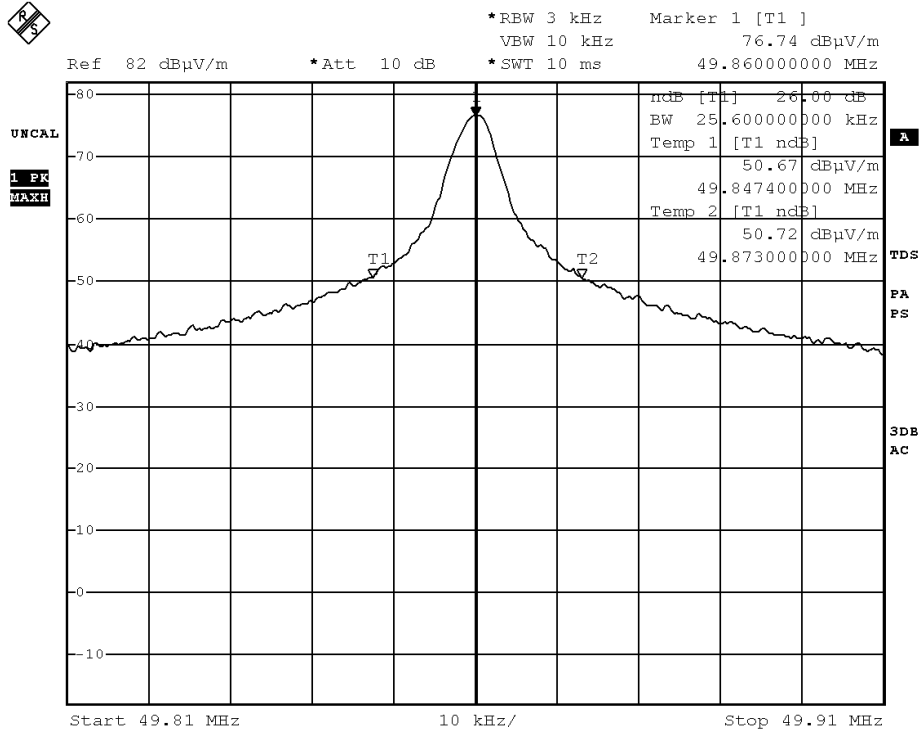


BUREAU VERITAS

TEST REPORT No.: (5212)147-0122

Measurement Data

Test Result of 26dB Bandwidth of Fundamental Emission: PASS



Date: 28.MAR.2012 14:08:16



TEST REPORT No.: (5212)147-0122

Duty Cycle Correction During 100msec:

Each function key sends a different series of characters, but each packet period (21.0msec) never exceeds a series of 4 long (1.82msec) and 10 short (0.56msec) pulses. Assuming any combination of short and long pulses maybe obtained due to encoding the worst case transmit duty cycle would be considered $(4 \times 1.82\text{msec}) + (10 \times 0.56\text{msec})$ per 21.0msec = 61.3% duty cycle. Figure A through C shows the characteristics of the pulse train for one of these functions.

Remarks: -

Duty Cycle Correction = $20\text{Log}(0.613) = -4.2\text{dB}$

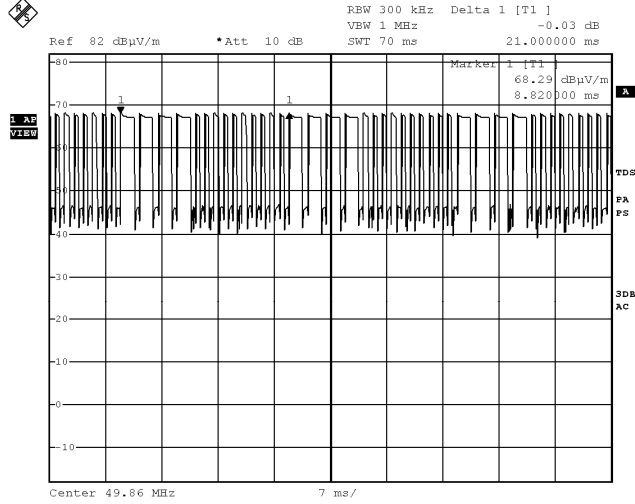
The following figures [Figure A to Figure C] show the characteristics of the pulse train for one of these functions.



BUREAU VERITAS

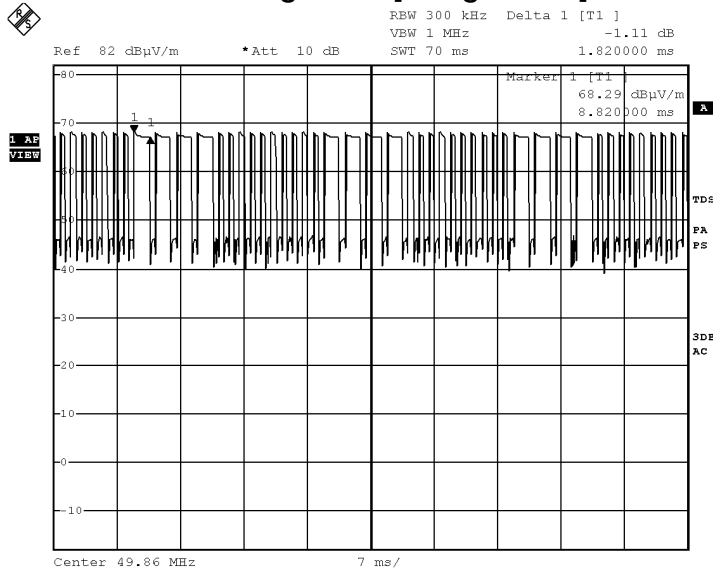
TEST REPORT No.: (5212)147-0122

Figure A [Pulse Train]



Date: 28.MAR.2012 14:10:33

Figure B [Long Pulse]



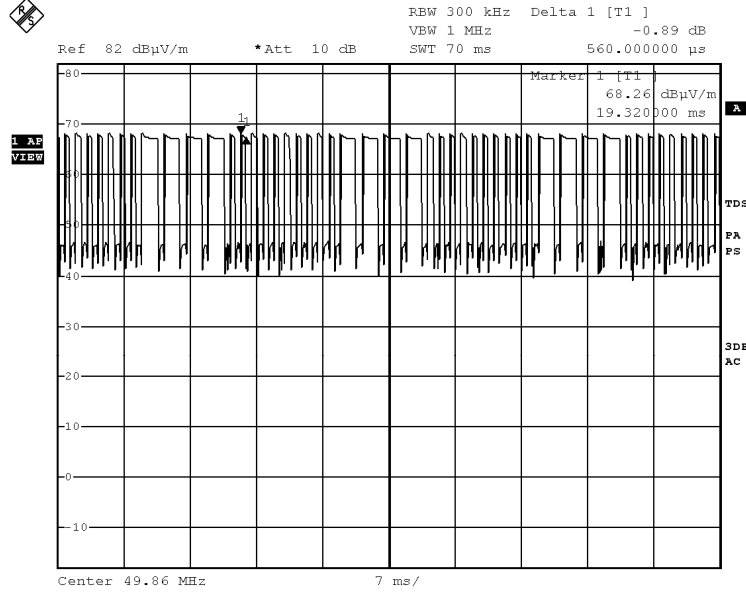
Date: 28.MAR.2012 14:10:50



BUREAU VERITAS

TEST REPORT No.: (5212)147-0122

Figure C [Short Pulse]



Date: 28.MAR.2012 14:11:13

TEST REPORT No.: (5212)147-0122

Photographs of EUT

Front View of the product



Rear View of the product



Battery compartment



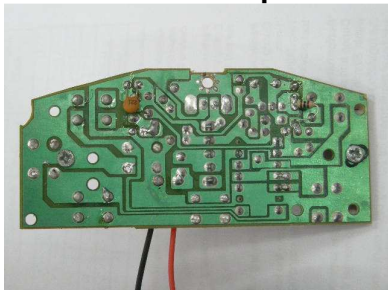
Battery Cover



TEST REPORT No.: (5212)147-0122

Photographs of EUT

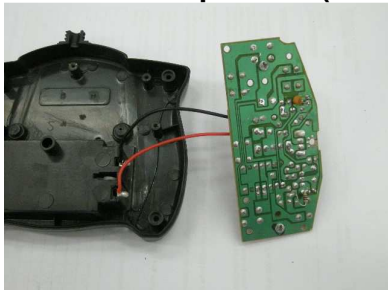
Inner Circuit Top View



Inner Circuit Bottom View



Front View of the product (Internal)



Rear View of the product (Internal)



TEST REPORT No.: (5212)147-0122

Measurement of Radiated Emission Test Set Up



******* End of Report *******