



**BUREAU
VERITAS**

TEST REPORT No.: (5216)127-0987

TEST REPORT

To:	NKOK, INC.	To:	-
Attn:	Lanny Halim	Attn:	-
Address:	5354 Irwindale Ave, Unit A Irwindale, CA 91706	Address:	-
Fax:	626-330-1199	Fax:	-
E-mail:	testing@nkok.com	E-mail:	-
Folder No.:			--
Factory Name:			--
Location:			--
Product:	RealTree Ford F-150 SVT RAPTOR: Orange MODEL: 82507		
	Sample No:	(5216)127-0987	
	Date of Receipt:	May 09, 2016	
	Test date:	May 13, 2016 to May 30, 2016	
	Test Requested:	FCC Part 15 – 2012	
	Test Method:	ANSI C63.4 – 2009	
	FCC ID:	XQPJH051627TX	
	The results given in this report are related to the tested specimen of the described electrical apparatus.		
CONCLUSION: The submitted sample was found to <u>COMPLY</u> with requirement of FCC Part 15 Subpart C.			
Authorized Signature:			
			
Reviewed by: Keith Yeung		Approved by: Law Man Kit	
Date: June 01, 2016		Date: June 01, 2016	



TEST REPORT No.: (5216)127-0987

Test Result Summary

EMISSION TEST			
Test requirement: FCC Part 15 - 2012			
Test Condition	Test Method	Test Result	
		Pass	Failed
Radiated Emission Test, 9kHz to 1GHz	ANSI C63.4	<input checked="" type="checkbox"/>	<input type="checkbox"/>
Frequency range of Fundamental Emission	ANSI C63.4	<input checked="" type="checkbox"/>	<input type="checkbox"/>
26dB Bandwidth of Fundamental Emission	ANSI C63.4	<input checked="" type="checkbox"/>	<input type="checkbox"/>
Duty Cycle Correction During 100mesc	ANSI C63.4	<input checked="" type="checkbox"/>	<input type="checkbox"/>

Report Revision & Sample Re-submit History:

Sample first submission date: May 11, 2016

Sample second submission date: May 30, 2016



TEST REPORT No.: (5216)127-0987

Test Laboratory & Test Instruments List

Radiated and Conducted emissions measurements are investigated and taken pursuant to the procedures of ANSI C63.4 – 2009. An Open Area Test Site and Full Anechoic Chamber (FCC Listed Site, Registration No. 642151) are set up for investigation and located at:

BUREAU VERITAS HONG KONG LIMITED, EMC CENTRE

No. 2106-2107, 21/F., Westin Centre,
26 Hung To Road,
Kwun Tong, Kowloon,
Hong Kong

Test Instrument List

Radiated Emission

EQUIPMENT	MANUFACTURER	MODEL NO.	SERIAL NO.	CALIBRATION DUE
EMI TEST RECEIVER	R&S	ESCI	100379	22-FEB-2017
LOOP ANTENNA	ETS LINDGREN	6502	00102266	05-NOV-2016
BICONICAL ANTENNA	ROHDE & SCHWARZ	HK116	100179	13-APR-2018
LOG-PERIODIC DIPOLE ARRAY ANTENNA	ROHDE & SCHWARZ	HL223	832369/001	06-APR-2018
BILOG ANTENNA	SCHAFFNER	CBL6112D	25229	26-FEB-2018
OPEN AREA TEST SITE	BVCPS	N/A	N/A	18-JUN-2016
ANECHOIC CHAMBER	ALBATROSS	M-CDC	80374004499B	10-MAY-2017
COAXIAL CABLE	SUHNER	N/A	N/A	04-OCT-2016

Measurement Uncertainty

Measurement	Frequency	Uncertainty
Radiated emissions	9kHz to 30MHz	4.2dB
	30MHz to 1GHz	5.0dB
	1GHz to 18GHz	4.9dB
	18GHz to 40GHz	4.8dB

Remarks: -

N/A: Not Applicable or Not Available

The measurement instrumentation uncertainty would be taking into consideration on each of the test result

TEST REPORT No.: (5216)127-0987

Equipment Under Test [EUT]

Description of Sample:

Product: RealTree Ford F-150 SVT RAPTOR: Orange
Model No.: 82507
Additional Model name: --
Additional Model number: --
Additional Model Information: --
Power Supply: 3Vd.c. ("AA" size battery x 2)

Description of EUT Operation:

The Equipment Under Test (EUT) is a NKOK, INC. of Radio Control toy. The transmitter is 2 sticks and operating at 27.146MHz. The EUT continues to transmit while sticks are being pushed or pulled, Modulation by IC, and type is pulse modulation.

The transmitter has different control:

1. Left stick – control forward and backward
2. Right stick – control left and right

Antenna Requirement (Section 15.203)

The EUT is use of a permanently antenna. The antenna consists of 35cm long wire. It is soldered on the PCB. The antenna is not replaceable or user serviceable. The requirements of S15.203 are met. There are no deviations or exceptions to the specifications.

Photo of Antenna



TEST REPORT No.: (5216)127-0987

Test Results

Radiated Emissions (Fundamental)

Test Requirement: FCC Part 15 Section 15.227
 Test Method: ANSI C63.4
 Test Date(s): 2016-05-30
 Temperature: 33.0 °C
 Humidity: 70.0 %
 Atmospheric Pressure: 100.6 kPa
 Mode of Operation: Transmission mode
 Tested Voltage: 3Vd.c. ("AA" size battery x 2)

Test Method:

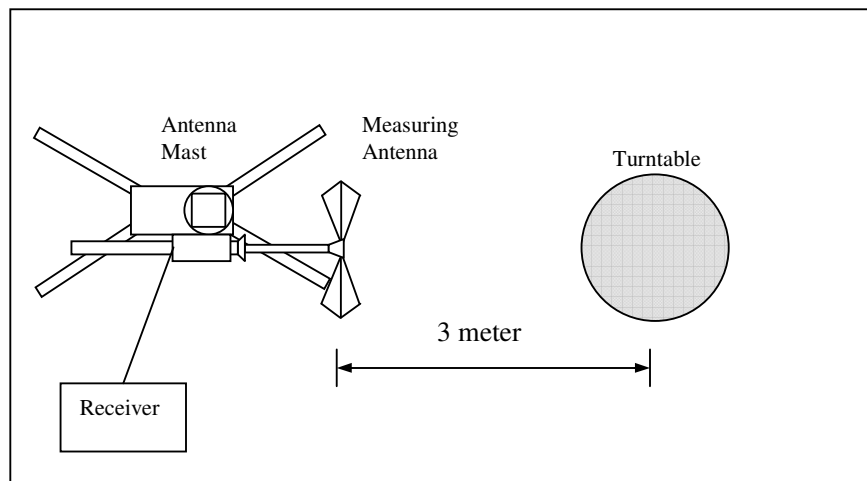
Radiated emissions measurements are investigated and taken pursuant to the procedures of ANSI C63.4 – 2009.

The equipment under test (EUT) was placed on a non-conductive turntable with dimensions of 1.5m x 1m and 0.8m high above the ground. 3m from the EUT, a broadband antenna mounting on the mast received the signal strength. During the test, each emission was maximized by: having the EUT continuously working, investigated all operating modes, rotated about all 3 axis (X, Y & Z) and considered typical configuration to obtain worst position, manipulating interconnecting cables, For battery operated equipment, the equipment tests shall be perform using new battery. The turntable was rotated to maximize the emission level. The antenna was then moving along the mast from 1m up to 4m until no more higher value was found. Both horizontal and vertical polarization of the antenna were placed and investigated.

For below 30MHz, a loop antenna with its vertical plane is place 3m from the EUT and rotated about its vertical axis for maximum response at each azimuth about the EUT. And the centre of the loop shall be 1m above the ground.

Location: The Roof, Westin Centre, 26 Hung To Road, Kwun Tong, Kowloon, Hong Kong

Test Setup: Open Area Test Site





TEST REPORT No.: (5216)127-0987

Limits for Field Strength of Fundamental Emissions [FCC 47CFR 15.227]:

Frequency Range of Fundamental [MHz]	Field Strength of Fundamental Emission [Peak] [μV/m]	Field Strength of Fundamental Emission [Average] [μV/m]
26.96 – 27.28	100,000 (100 dBμV/m)	10,000 (80 dBμV/m)

Measurement Data

Test Result of (Transmission mode): PASS

Detection mode: Peak

Frequency (MHz)	Polarity (H/V) and degree	Antenna Factor and Cable Loss (dB/m)	Field Strength at 3m (dBμV/m)	Limit at 3m (dBμV/m)	Margin (dB)
27.146	V/0°	9.7	53.3	100.0	-46.7

Detection mode: # Average

Frequency (MHz)	Polarity (H/V) and degree	Antenna Factor and Cable Loss (dB/m)	Field Strength at 3m (dBμV/m)	Limit at 3m (dBμV/m)	Margin (dB)
27.146	V/0°	9.7	**49.7	80.0	-30.3

For pulse modulated devices and using measuring equipment employing a peak detection mode, properly adjusted for such factor as pulse desensitisation.

**Duty Cycle Correction = $20\log(0.66) = -3.6\text{dB}$

Note: Field Strength includes Antenna Factor and Cable Loss.

Receiver setting: RBW = 100KHz
VBW = 300KHz



TEST REPORT No.: (5216)127-0987

Radiated Emissions (9kHz – 1GHz)

Test Requirement: FCC Part 15 Section 15.209
 Test Method: ANSI C63.4
 Test Date(s): 2016-05-30
 Temperature: 33.0 °C
 Humidity: 70.0 %
 Atmospheric Pressure: 100.6 kPa
 Mode of Operation: Transmission mode
 Tested Voltage: 3Vd.c. ("AA" size battery x 2)

Limits for Radiated Emissions [FCC 47 CFR 15.209]:

Frequency Range [MHz]	Quasi-Peak Limits [$\mu\text{V}/\text{m}$]	Measurement Distance m
0.009-0.490	2400/F(kHz)	300
0.490-1.705	24000/F(kHz)	30
1.705-30	30	30
30-88	100	3
88-216	150	3
216-960	200	3
Above960	500	3

Measurement Data

Test Result of (Transmission mode): PASS

Detection mode: Peak

Frequency	Polarity (H/V)	Field Strength	Limit	Margin (dB)
Emissions detected are more than 20 dB below the limit line(s) in 9kHz to 30MHz				



TEST REPORT No.: (5216)127-0987

Measurement Data

Test Result of (Transmission mode): PASS

Detection mode: Quasi-Peak

Frequency (MHz)	Polarity (H/V)	Antenna Factor and Cable Loss (dB/m)	Field Strength at 3m (dB μ V/m)	Limit at 3m (dB μ V/m)	Margin (dB)
54.292	H	9.3	33.8	40.0	-6.2
81.438	H	9.1	23.6	40.0	-16.4
108.584	H	10.6	23.8	43.5	-19.7
135.730	H	12.2	24.0	43.5	-19.5
162.876	H	13.5	25.6	43.5	-17.9
190.022	H	14.7	25.7	43.5	-17.8
217.168	H	11.2	28.2	46.0	-17.8
244.314	H	11.8	28.9	46.0	-17.1
271.460	H	13.4	30.8	46.0	-15.2
298.606	H	13.6	30.6	46.0	-15.4

Frequency (MHz)	Polarity (H/V)	Antenna Factor and Cable Loss (dB/m)	Field Strength at 3m (dB μ V/m)	Limit at 3m (dB μ V/m)	Margin (dB)
54.292	V	9.3	28.5	40.0	-11.5
81.438	V	9.1	22.5	40.0	-17.5
108.584	V	10.6	24.2	43.5	-19.3
135.730	V	12.2	24.5	43.5	-19.0
162.876	V	13.5	28.7	43.5	-14.8
190.022	V	14.7	29.3	43.5	-14.2
217.168	V	11.2	32.2	46.0	-13.8
244.314	V	11.8	32.0	46.0	-14.0
271.460	V	13.4	32.3	46.0	-13.7
298.606	V	13.6	29.6	46.0	-16.4

Note: Field Strength includes Antenna Factor and Cable Loss.

Receiver setting: RBW = 120KHz
VBW = 120KHz



TEST REPORT No.: (5216)127-0987

26dB Bandwidth of Fundamental Emission

Test Requirement: FCC 47 CFR 15.227
Test Method: ANSI C63.4
Test Date(s): 2016-05-13
Temperature: 26.0 °C
Humidity: 75.0 %
Atmospheric Pressure: 100.2 kPa
Mode of Operation: Transmission mode
Tested Voltage: 3Vd.c. ("AA" size battery x 2)

Test Method:

The bandwidth is measured at an amplitude level reduced from the reference level by a specified ratio. The reference level is the level of the highest amplitude signal observed from the transmitter at the fundamental frequency. Once the reference level is established, the equipment is conditioned with typical modulating signal to produce the worst-case (i.e. the widest) bandwidth.

Limits for 26dB Bandwidth of Fundamental Emission:

Frequency [MHz]	26dB Bandwidth [KHz]	Limits [MHz]
27.14624	93.44	within 26.96 – 27.28



BUREAU VERITAS

TEST REPORT No.: (5216)127-0987

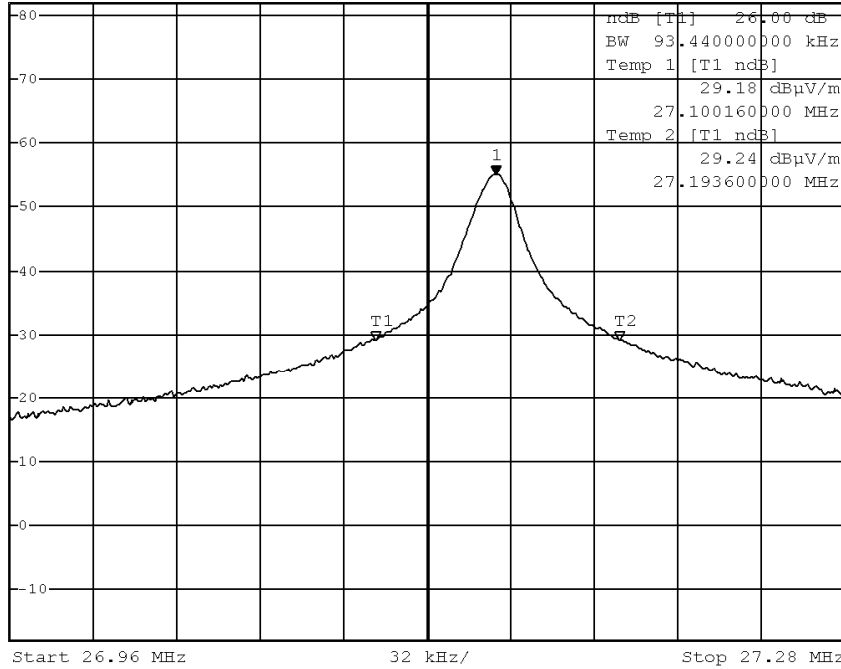
Measurement Data

Test Result of 26dB Bandwidth of Fundamental Emission: PASS



*RBW 10 kHz Marker 1 [T1]
 VBW 30 kHz 55.18 dBμV/m
 SWT 5 ms 27.146240000 MHz

Ref 82 dBμV/m *Att 10 dB



Date: 13.MAY.2016 13:39:10



TEST REPORT No.: (5216)127-0987

Duty Cycle Correction During 100msec:

Each function key sends a different series of characters, but each packet period (100.0msec) never exceeds a series of 21 long (1.6msec) and 54 short (0.6msec) pulses. Assuming any combination of short or long pulses may be obtained due to encoding the worst case transmit duty cycle would be considered $[(21 \times 1.6\text{msec}) + (54 \times 0.6\text{msec})]$ per 100.0msec=66.0% duty cycle. Figure A and B show the characteristics of the pulse train for one of these functions.

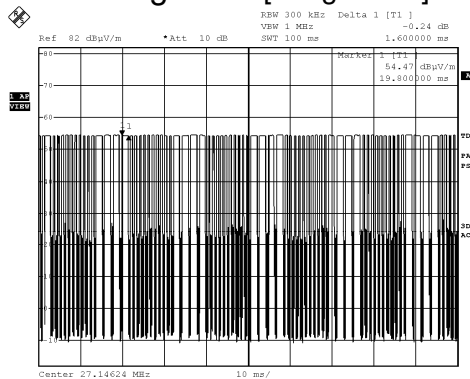
Remarks: -

Duty Cycle Correction = $20\text{Log}(0.66) = -3.6\text{dB}$

The following figures [Figure A and Figure B] show the characteristics of the pulse train for one of these functions.

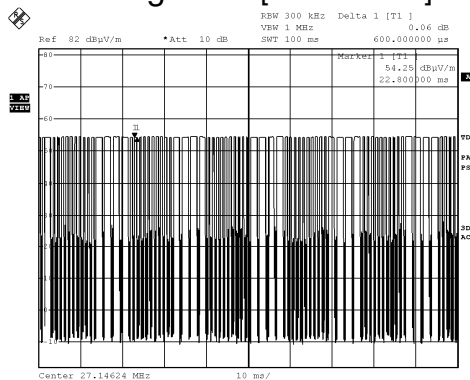
TEST REPORT No.: (5216)127-0987

Figure A [Long Pulse]



Date: 13.MAY.2016 13:40:33

Figure B [Short Pulse]



Date: 13.MAY.2016 13:40:53

TEST REPORT No.: (5216)127-0987

Photographs of EUT

Front View of the product



Rear View of the product



Top View of the product



Bottom View of the product



Side View of the product



Side View of the product



Battery compartment



Battery Cover



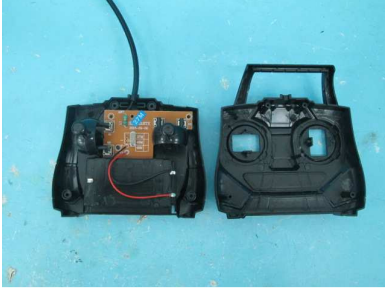


**BUREAU
VERITAS**

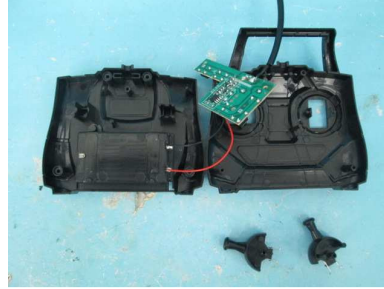
TEST REPORT No.: (5216)127-0987

Photographs of EUT

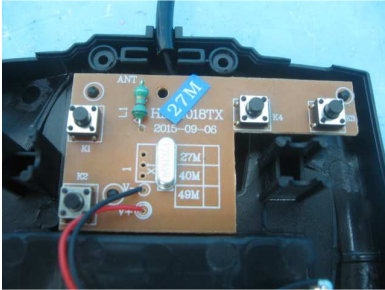
Internal View of the product



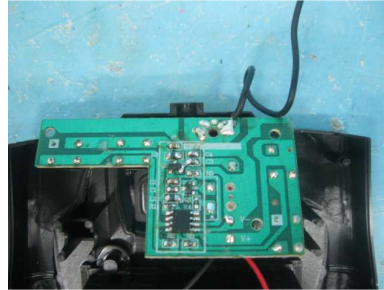
Internal View of the product



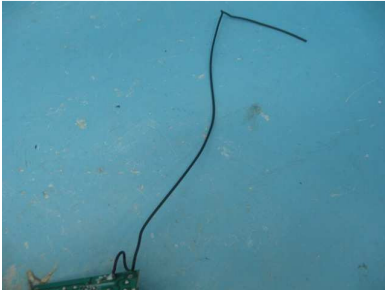
Inner Circuit Top View



Inner Circuit Bottom View



Antenna



TEST REPORT No.: (5216)127-0987

Measurement of Radiated Emission Test Set Up



******* End of Report *******