

# **Wireless Tablet User's Manual**

**Hanwang Technology Co., Ltd.**

---

Copyright © Hanwang Technology Co., Ltd, 2009

All rights reserved. No part of this manual may be reproduced except for your express personal use. Hanwang Technology Co., Ltd reserves the rights to revise this publication without obligation to provide notification of such changes. Hanwang Technology Co., Ltd does its best to provide current and accurate information in this manual. However, Hanwang Technology Co., Ltd reserves the right to change any specifications and product configurations at its discretion, without prior notice and without obligation to include such changes in this manual.

Hanvon are registered trademarks of Hanwang Technology Co., Ltd.

Microsoft, Windows, and Vista are either registered trademarks or trademarks of Microsoft Corporation in the United States and/or other countries. Apple, the Apple logo, and Macintosh are registered trademarks of Apple Computer, Inc., registered in the U.S. and other countries. Any additional company and product names mentioned in this documentation may be trademarked and /or registered as trademarks. Mention of third-party products is for information purposes only and constitutes neither an endorsement nor a recommendation.

Hanwang Technology Co., Ltd assumes no responsibility with regard to the performance or use of these products.

---

# Contents

<b>CHAPTER 1 GRAPHICS TABLET INTRODUCTION.....</b>	<b>1</b>
1.1 GENERAL INTRODUCTION.....	1
1.2 FEATURES.....	1
<b>CHAPTER 2 QUICK-START TUTORIAL.....</b>	<b>2</b>
2.1 SETUP STEPS .....	2
2.2 ILLUSTRATION OF WIRELESS TABLET.....	3
2.3 WAKE UP TABLET .....	6
2.4 SWITCH CHANNEL OF TABLET.....	7
2.5 BATTERY CHARGING FOR TABLET.....	7
2.6 MATCH CODE OF TABLET .....	7
<b>CHAPTER 3 USAGE OF PEN.....</b>	<b>9</b>
<b>CHAPTER 4 INSTRUCTION FOR WINDOWS SYSTEMS.....</b>	<b>13</b>
4.1 SYSTEM REQUIREMENTS .....	13
4.2 INSTALLATION .....	13
4.3 UNINSTALLING .....	14
4.4 CONFIGURATION.....	15
<b>CHAPTER 5 INSTRUCTION FOR MAC SYSTEMS.....</b>	<b>25</b>
5.1 SYSTEM REQUIREMENTS .....	25
5.2 INSTALLATION .....	25

---

5.3 UNINSTALLING .....	28
5.4 CONFIGURATION.....	29
<b>CHAPTER 6 BUNDLED SOFTWARE.....</b>	<b>35</b>
6.1 HANVON SHELL.....	35
6.2 PENWRITE.....	41
6.3 PENSIGN .....	48
6.4 PENMAIL.....	49
6.5 PENMARK.....	51
6.6 WHITEBOARD.....	53
<b>CHAPTER 7 MAINTENANCE .....</b>	<b>57</b>
7.1 PEN HOLDER.....	57
7.2 EXCHANGE PEN NIB.....	58
7.3 CAUTIONS.....	59
<b>APPENDIX.....</b>	<b>61</b>
WARRANTY .....	61

- ◆ This User's Manual does not contain detailed information of any software from third party.
- ◆ Due to our continuous updates on the product, all figures in this manual are only for reference, the actual item is the standard.

# **Chapter 1 Graphics Tablet Introduction**

## **1.1 General Introduction**

The Hanvon Graphics Tablet allows user to create graphics on a computer using a cordless and battery-free pen. It is very easy to use. The user does not have to be an experienced graphic artist to use it. This USB graphics tablet supports a variety of professional painting and photo editing software including Painter, Photoshop, Ulead PhotoImpact, Flash, Dabbler, Maya, PaintShop and more.

## **1.2 Features**

- Cordless and Battery-free pen
- Pressure Sensitive Technology
- Radio Frequency Technology
- Equipped with Office Assistant Tools
- Using standard USB without the need for an external power adapter
- Windows & Mac compatible
- Software Supported: Painter / Photoshop / Ulead PhotoImpact / Flash / CorelDraw / Dabbler / Maya and a variety of graphic processing software.

## Chapter 2 Quick-Start Tutorial

### 2.1 Setup steps

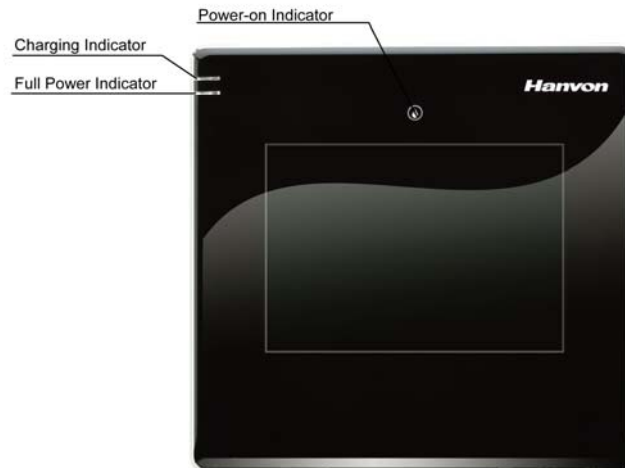
1. Install the driver from product CD
2. Connect receiver to USB port on computer.
3. Choose working mode:
  - Wired mode: Connect the receiver to tablet.
  - Wireless mode: Disconnect the receiver from tablet.

**Note:** Either wired or wireless mode requires the receiver connecting to USB port of computer.

## CHAPTER 2 Quick-Start Tutorial

### 2.2 Illustration of Wireless Tablet

#### 2.2.1 Front Side



**Power-on Indicator:** To represent the state of graphics tablet. Data is transmitting between the tablet and the receiver when green light blinks.

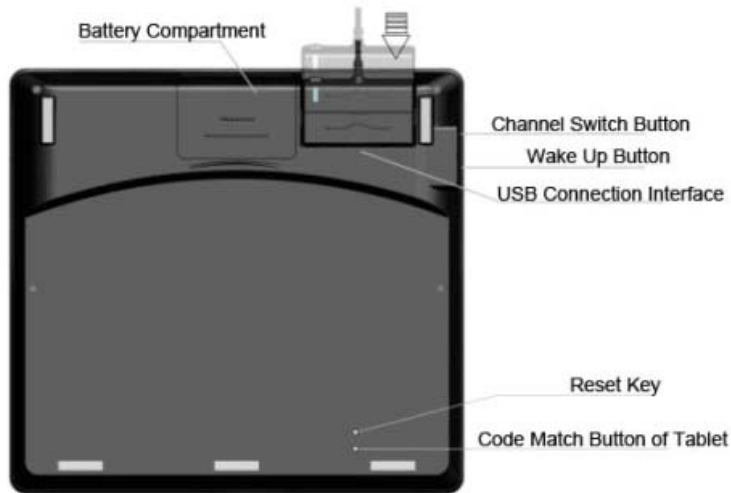
**Charging Indicator:** Red light represents charging the tablet.

**Full Power Indicator:** Green light represents full battery power. The battery cannot be detected or malfunctioned when the Power-on Indicator and Charging Indicator are blinking; please check whether the battery is secured in the compartment and is

## CHAPTER 2 Quick-Start Tutorial

in good condition. The battery is fully charged when Charging Indicator and Full power Indicator are on at the same time.

### 2.2.2 Wired Mode



**Battery compartment:** A compartment stores tablet battery.

**Channel switch button:** To switch channel when multiple wireless tablets use the same channel and interfere each other. Press Channel switch button for once time, the channel can be switched from 0 to 15. Receiver Indicator blinks if the channel was switched successfully.



## CHAPTER 2 Quick-Start Tutorial

---

**Wake up button:** To wake up wireless tablet from sleep mode.

**USB Connection Interface:** To connect the receiver to tablet.

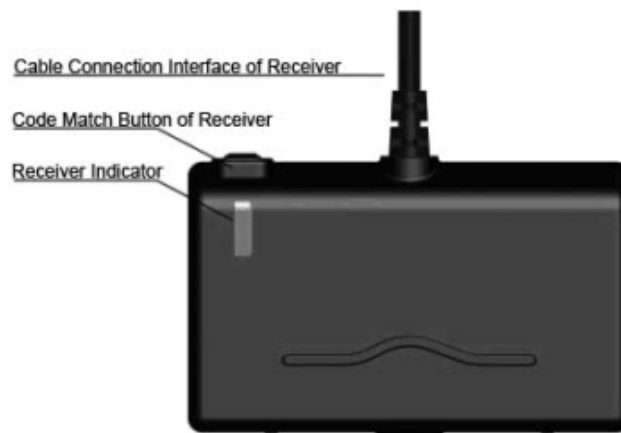
The interface is for charging battery and communication between the tablet and receiver at wired mode.

**Reset Key:** To reset the tablet when sleep mode or crashing.

**Code Match Button:** Press the code match button of tablet for 3 seconds and receiver indicator will blink, then match the code.

**Note: Code between tablet and its receiver has been matched during production.**

### 2.2.3 Receiver



**Cable Connection Interface of Receiver:** To connect the

## CHAPTER 2 Quick-Start Tutorial

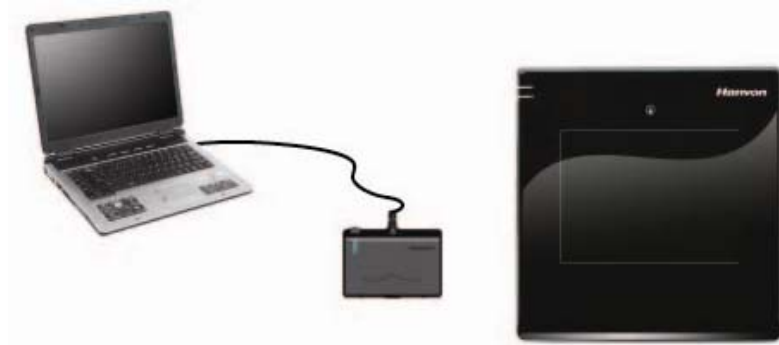
---

receiver to tablet.

**Code Match Button of Receiver:** Press to match code between receiver and tablet.

**Receiver Indicator:** green light blinks when transmitting between receiver and tablet.

### 2.2.4 Wireless Mode



### 2.3 Wake up Tablet

Tablet will be into sleep mode automatically when the tablet idled over about 10 minutes. Press wake up button, then users can use the tablet normally.

### **2.4 Switch Channel of Tablet**

Disconnect receiver with tablet, the tablet will be on wireless mode.

It will be disturbed when multiple tablets using the same channel, for example: multiple tablets being wireless mode, using wireless tablet with RF mouse or wireless telephone together in one room.

Press Channel switch button once, receiver indicator will blink, and the channel will be switched.

### **2.5 Battery Charging for Tablet**

There is a BL-5C LI battery in the tablet. Please charge the battery when power is low.

Charging: Connect receiver to tablet, then connect tablet to computer,

### **2.6 Match Code of Tablet**

It will be disturbed when multiple tablets using the same channel, then please try to rematch the code for tablet.

**Steps as follow:**

1. Install the tablet driver for computer
2. Connect receiver with the computer, disconnect the receiver

## CHAPTER 2 Quick-Start Tutorial

---

with tablet,

3. Press code match button of receiver; when receiver indicator will blink, press code match button of tablet on the back case.

4. Match code successfully if using the pen tablet normally.

Otherwise, please press match code of receiver again, then press match code of tablet. Operate as above until match code successfully.

**Note:** Hanvon has already matched the code between tablet and receiver when finishing production, it is unnecessary to match the code at first time use.

## Chapter 3 Usage of Pen



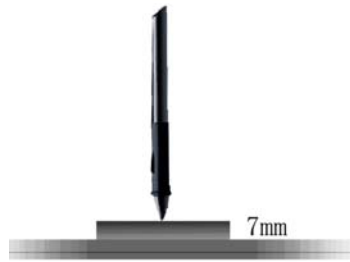
### Holding the pen

Hold the pen as usual.

- The pen will take effect when it comes within 7mm above the tablet.
- While using the pen, be sure that your thumb or index finger can easily control the button on the pen, which acts as the right-click key of a mouse.

## CHAPTER 3 USAGE of Pen

---



### **Positioning**

Moving the pen in the active area of the tablet will control the cursor's position on the computer screen.



The pen and tablet use the Absolute Coordination method. This means the active area of the tablet represents the entire computer screen. Moving the pen on the tablet creates a corresponding movement of the cursor on the screen.

## CHAPTER 3 USAGE of Pen

---

### **Single Click**

One slight touch of the pen on the tablet has the same effect as a single left-click of the mouse.

### **Double Click**

Two immediate clicks on the tablet have the same effect as a double left-click of the mouse.



### **Double Click Technology**

When the cursor is positioned, press the tablet twice immediately with the pen tip, making sure that you do not move the pen tip. The response for the double click can be slow for beginners. You can solve this problem by adjusting the double click speed from the normal setting of the tablet.

### **Dragging**

Select a target by pressing the pen down on it, and do not

## CHAPTER 3 USAGE of Pen

---

release the pen till you have moved the target to the new position you want.



### **Pressure Sensitive Painting**

In applicable software, you can use the pressure sensitivity of the pen to control the painting brushwork for different effects such as direction, stroke width, color and thickness.

The software that supports pressure sensitivity includes Adobe Photoshop, Painter, Flash, Ulead PhotoImpact, Art Dabblers etc.



## CHAPTER 4 INSTRUCTION FOR Windows Systems

---

# Chapter 4 Instruction for Windows Systems

### 4.1 System Requirements

CPU	Pentium III 1GHz or later
RAM	256MB
Hard-disk	200MB
OS	WINDOWS 2000/XP/Vista X86/Vista X64
Port	USB1.1 or 2.0

### 4.2 Installation

Connect the drawing tablet's USB cable to the computer's USB port.

#### **Step 1**

Insert the driver CD into the CD-ROM drive. The Installation Menu should pop-up automatically. If the menu does not appear, double-click the *My Computer* icon on the Desktop, find the *AutoRun.exe* file under the CD-ROM's root directory, and

## CHAPTER 4 INSTRUCTION FOR Windows Systems

---

double-click it.

### **Step 2**

Click on *Install Driver for Graphic Tablet* button to install the driver and click on *Install Hanvon Soft* to install the bundled software.

### **Step 3**

After installing the driver and the bundled software, read this manual for detailed information on using and customizing your graphics tablet.

**Note:** If the tablet cannot be used after driver installation, please restart your computer.

## **4.3 Uninstalling**

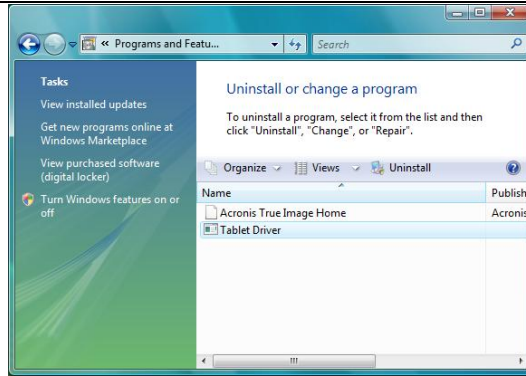
### **Step 1**

Click the Windows *Start* button and then select *Control panel*.

### **Step 2**

Double click *Add/remove program* in the control panel window and find *Tablet Driver*.

# CHAPTER 4 INSTRUCTION FOR Windows Systems



### **Step 3**

Click *Uninstall* and follow the prompts to remove the tablet driver.

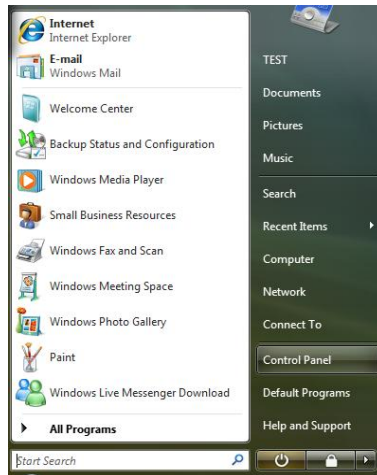
## **4.4 Configuration**

Hanvon tablet driver provides a configuration window to set pen pressure, working area, dual-monitors, double-click speed, express touch keys, etc.

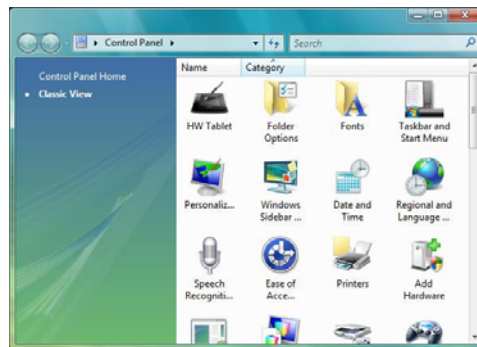
### **Before Configuration**

- Connect the graphics tablet to the USB port on your computer.
- Go to *control panel*.

# CHAPTER 4 INSTRUCTION FOR Windows Systems

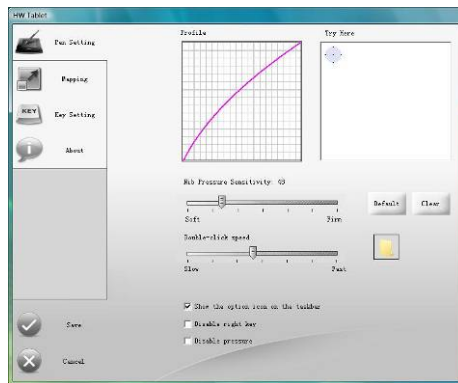


- Double-click the *HW Tablet* icon to open the configuration interface.



# CHAPTER 4 INSTRUCTION FOR Windows Systems

## 4.4.1 General Configuration



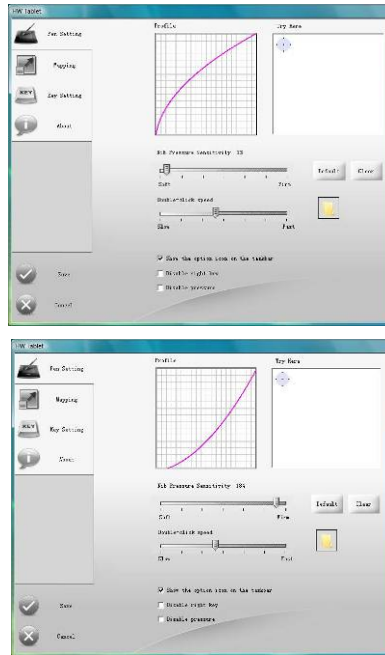
### **a. Adjusting Pressure Sensitivity**

Pen pressure sensitivity can be adjusted by dragging the slider between soft and hard. To create broad strokes, use a soft tip. To draw thin lines, use a hard tip. The factory setting can be restored by clicking the *Default* button. Adjustments can be saved by clicking the *Save* button or can be canceled by clicking the *Cancel* button.

### **b. Pressure Curve Graph**

Pen pressure sensitivity changes are displayed on the Pressure Curve Graph. The images below show the graphs for light and heavy pen pressure respectively.

# CHAPTER 4 INSTRUCTION FOR Windows Systems

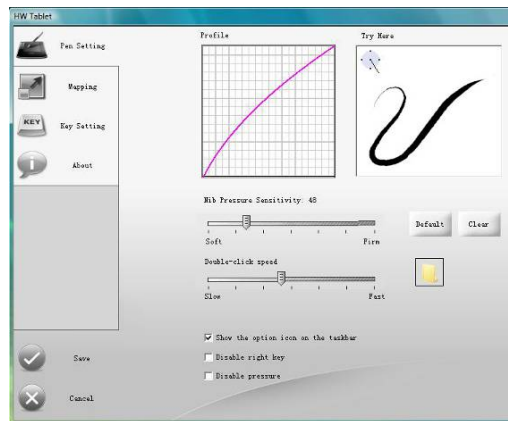


## **c. Pressure Testing Area**

The right area is the pressure test area which is use to test the pen tip feel. The round circle at the upper left corner represents the tile angle between the drawing pen and the tablet surface. All the writing and drawing in the test area can be cleared by clicking the *Clear* button.

# CHAPTER 4 INSTRUCTION FOR Windows Systems

**Note:** Only Windows 2000/XP/Vista X86/Vista X64 support tilt angle.



## **d. Double-Click Speed**

Dragging the slider to adjust the double-click speed and then you can test the double click speed on the folder icon.

## **e. Other settings**

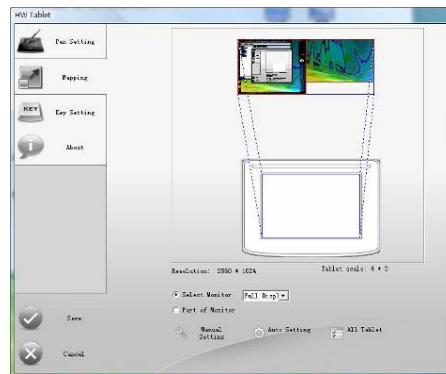
- When you select the option to display the icon on taskbar, the user can configure the tablet by right-clicking on the icon. Uncheck option not to show *HW Tablet* icon on the taskbar.



- Check the option *Disable right key*, the pen button acting as right-click of mouse button will not be functional.

# CHAPTER 4 INSTRUCTION FOR Windows Systems

## 4.4.2 Mapping



### **a. Single Monitor Mode**

The entire active area of the tablet maps to the entire monitor by default. If your computer has more than one monitor, see *Multi-Monitor Mode*.

### **b. Multi-Monitor Mode**

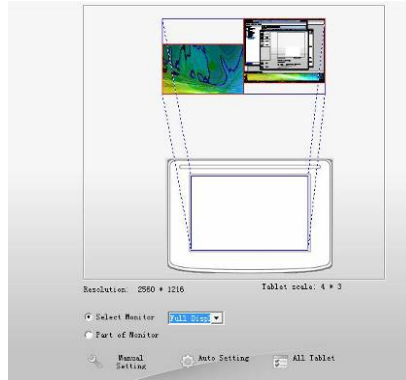
#### a) Full Screen

Choose *Select Monitor* and then select *Full Display* from the drop-down menu. You will see the screen area corresponding to the active area of the tablet is mapped.



## CHAPTER 4 INSTRUCTION FOR Windows Systems

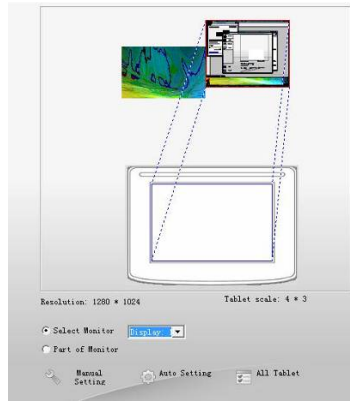
---



### b) Screen #1

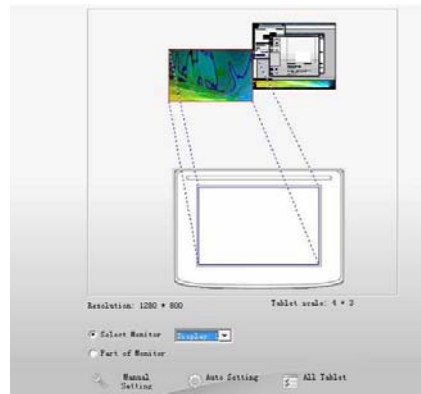
Choose *Select Monitor* and select *Display 1* from the drop-down menu to set the area only Display 1 can be controlled by the tablet.

## CHAPTER 4 INSTRUCTION FOR Windows Systems



### c) Screen #2

Choose *Select Monitor* and select *Display 2* from the drop-down menu to set the area only Display 2 can be controlled by the tablet.

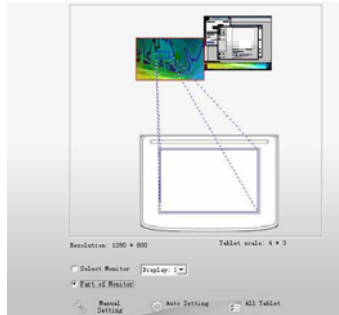


## CHAPTER 4 INSTRUCTION FOR Windows Systems

---

### **c. Portion of Screen**

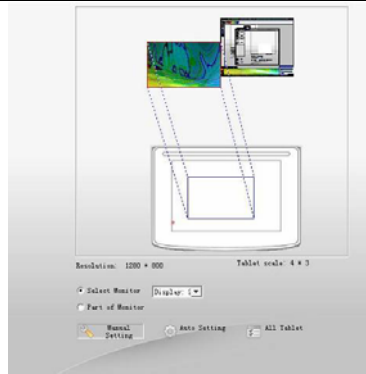
Choose *Part of Monitor*, and then click the upper left corner and lower right corner for the expected area of screen which will be mapped to the full tablet.



### **d. Portion of Tablet**

*Manual Setting* enables you to select part of the active area of the tablet mapped to the full screen.

## CHAPTER 4 INSTRUCTION FOR Windows Systems



### **e. Auto Setting**

The tablet active area can be automatically set by clicking the *Auto Setting* button. The active area can be set when the user have single monitor, multi-monitor or wide screen monitor (16:9).

### **4.4.3 Key setting**

You will see the information as following figure shown because the tablet you purchased does not support the express touch keys.



# Chapter 5 Instruction for Mac Systems

### 5.1 System Requirements

RAM	Minimum is 128MB (256MB is recommended)
Hard-disk	200MB
OS	MAC-OS 10.4 or later
Port	USB1.1or 2.0

### 5.2 Installation

Connect the graphic tablet's USB cable to the computer's USB port.

#### **Step 1**

Insert the driver CD into the CD-ROM drive then find the install file in *MacOS X/Mac104/Install.dmg* (**Note:**For MacOS 10.4 or later) or *MacOS X/Mac103/Hwinstall.dmg* (**Note:** For MacOS 10.3.X and it does not support express touch keys of graphics tablet), click on the *Install.dmg* or *Hwinstall.dmg* icon to run the file.

## CHAPTER 5 INSTRUCTION FOR Mac Systems



**Note:** If you installed driver for **Mac OS 10.3.X**, you need to uninstall it before driver installation for **Mac OS 10.4.X or later**. For removing the driver, please open "System-Library-Extensions" and delete "HYTabletDriver.kext" file.

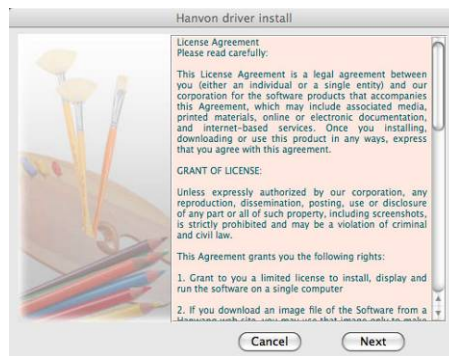
### **Step 2**

Double-click the *Install* icon.



### **Step 3**

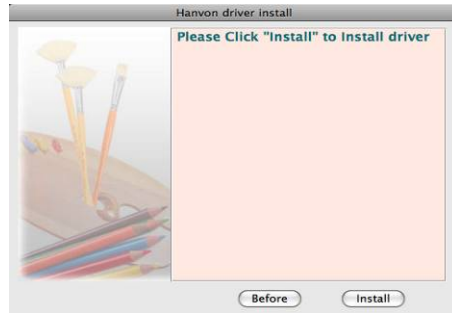
Please read the license agreement carefully then click *Next*.



## CHAPTER 5 INSTRUCTION FOR Mac Systems

### **Step 4**

Click *Install* to install the tablet driver.



### **Step 5**

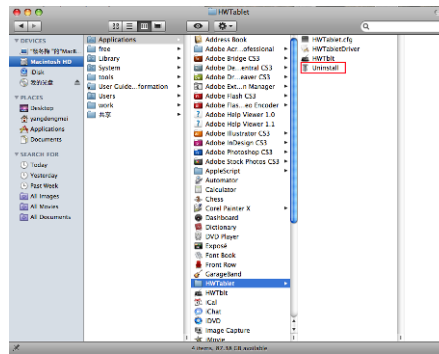
Click *OK* and reboot your computer when the install process is finished.



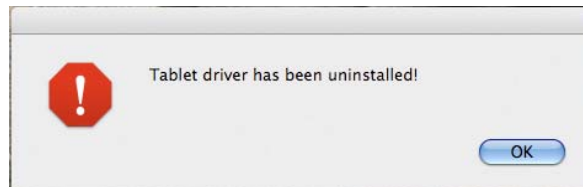
# CHAPTER 5 INSTRUCTION FOR Mac Systems

## 5.3 Uninstalling

Open *HWTablet* in *Applications*.



Choose *Uninstall* to remove the tablet driver. Please click *OK* when the driver has been removed. (Suggestion: Reboot the computer) .



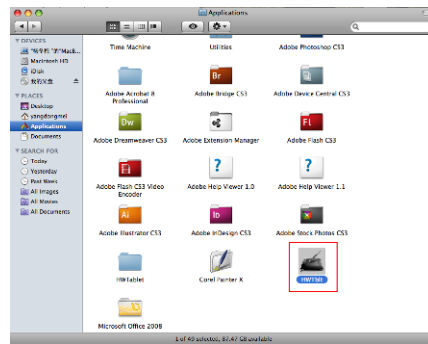


# CHAPTER 5 INSTRUCTION FOR Mac Systems

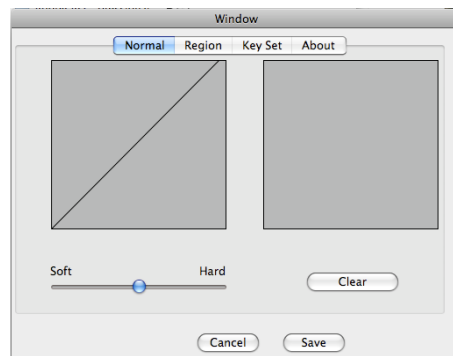
## 5.4 Configuration

Connect the tablet to your computer by USB cable and port.

The *HWTblt* icon has been added in the applications. Double-click the *HWTblt* icon to open the tablet control panel.



### 5.4.1 General Configuration



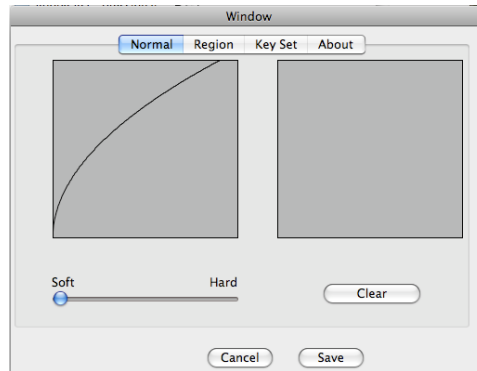
## CHAPTER 5 INSTRUCTION FOR Mac Systems

### **a. Adjusting Pressure Sensitivity**

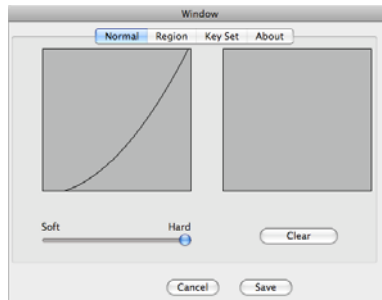
Pen pressure sensitivity can be adjusted by dragging the slider between soft and hard. The right area is the pressure test area. Adjustment can be saved by clicking the *Save* button, or can be canceled by clicking the *Cancel* button.

### **b. Pressure Curve Graph**

Pen pressure sensitivity changes are displayed on the Pressure curve graph. The images below show the graphs for light and heavy pen pressure respectively.

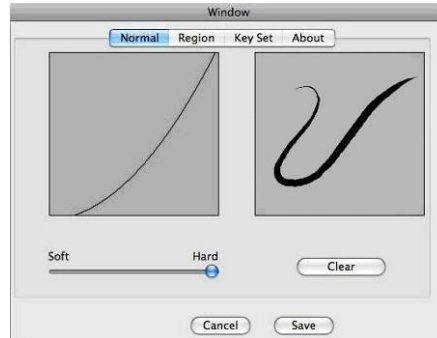


## CHAPTER 5 INSTRUCTION FOR Mac Systems



### **c. Pressure Test Area**

All the writing and drawing in the test area can be cleared by clicking *Clear* button.

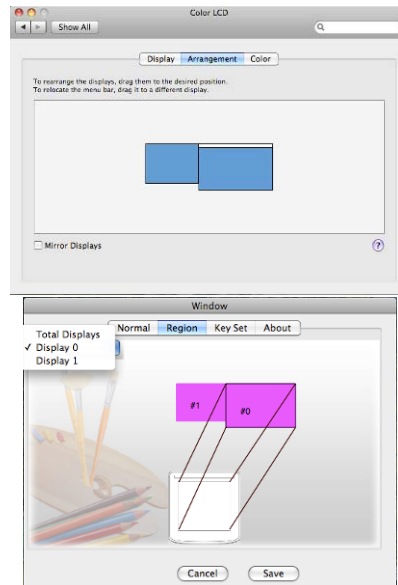


# CHAPTER 5 INSTRUCTION FOR Mac Systems

## 5.4.2 Mapping

### a. Multi-Monitor Mode

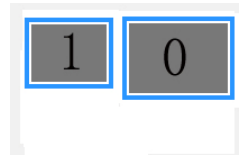
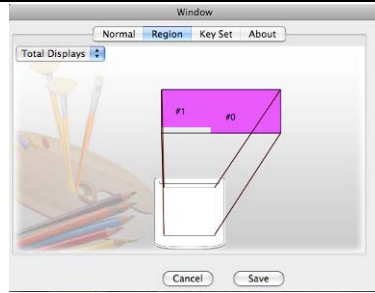
You can drag the displays to the desired order if you computer has more than one monitor.



#### a) Full screen

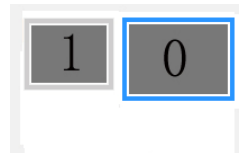
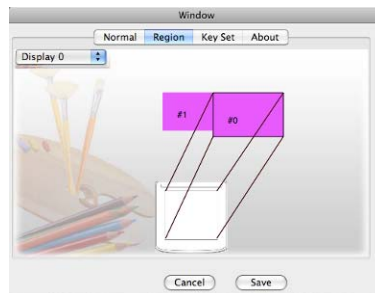
Choose *Region* and select *Total Displays* from the drop-down menu. You will see the active area of the monitors corresponding to the area in table is mapped.

## CHAPTER 5 INSTRUCTION FOR Mac Systems



### b) Display #0

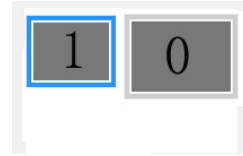
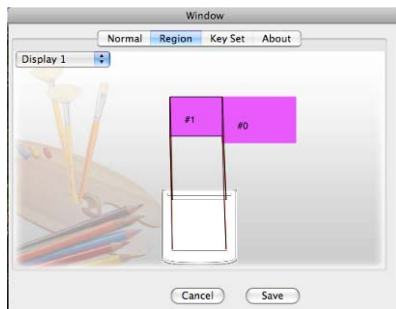
Select *Display 0* from the drop-down menu to set the area in tablet to control Display 0.



### c) Display #1

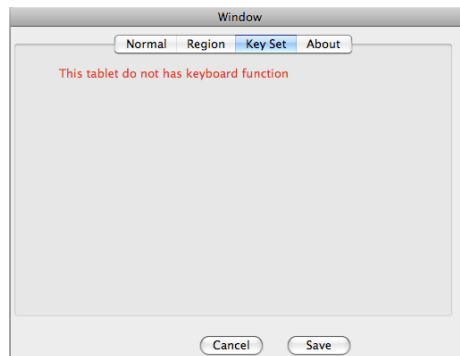
Select *Display 1* from the drop-down menu to set the area in tablet to control Display 1.

## CHAPTER 5 INSTRUCTION FOR Mac Systems



### 5.4.3 Key set

You will see the information as following figure shown because the tablet you purchased does not support the express touch keys.



## Chapter 6 Bundled Software

### 6.1 Hanvon Shell

#### 6.1.1 Shell Summary

Hanvon Shell is a shortcut startup application for starting bundled Hanvon Software or other software.

Default startup style: it will be operated automatically when you startup your computer; if user exits shell from the application, it will switch to the manual startup style; double click the shortcut



icon on the desktop to startup the Shell toolbar.

**Main interface will be shown as following:**



**Icons explanations as following:**

#### 1. Area for Dragging Shell

After opening shell toolbar, you can drag the icon to adjust the

## CHAPTER 6 Bundled Software

---

positions at up, down, left and right locations on computer's screen;

When cursor have been left the toolbar for 5 seconds or later, Shell toolbar will be hided, Single-click it to display the main interface;

### **2. PenWrite**

Editing Microsoft Office documents formatted as: Word、Txt、Excel and PPT by handwriting directly;

PenWrite Provides English、German、French、Italian、Dutch、Spanish、Swedish、Portuguese (Portugal)、Portuguese (Brazil) multi-languages recognition

### **3. PenWrite Asia**

Editing Microsoft Office documents formatted as: word、Txt、Excel and PPT by handwriting directly;

PenWrite Asia Provides Simplified Chinese 、 Traditional Chinese (Hong Kong) 、 Traditional Chinese (Taiwan) 、 Japanese and Korean languages recognition

### **4. PenSign**

This program enables you to add your handwriting signature in a document such as Microsoft Office word /PPT;



## CHAPTER 6 Bundled Software

---

### **5. PenMail**

Providing handwrite email in Outlook Express or Windows Mail.

### **6. PenMark**

Providing handwrite mark on desktop or pictures;

### **7. WhiteBoard**

A software application simulates Electronic Whiteboard. The monitor is like a marker board in front of users and become a simplified Electronic Whiteboard through a projector.

### **8. System Menu**

Configure shell setting


### **9. Tablet Setting**

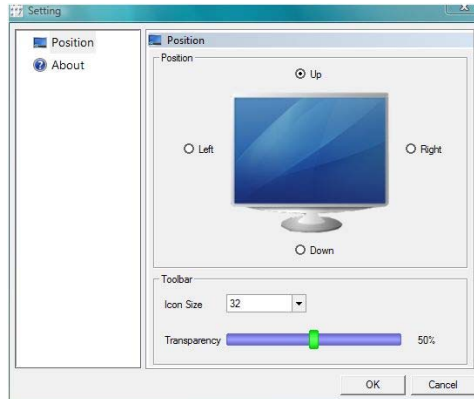
Configure tablet setting

## CHAPTER 6 Bundled Software

### 6.1.2 System Menu Shell



Click  to enter Shell configuration interface shown as following figure:



Position: Set the position for Hanvon Shell on the screen;


Icon Size: Set the icon size shown in the Hanvon startup toolbar;

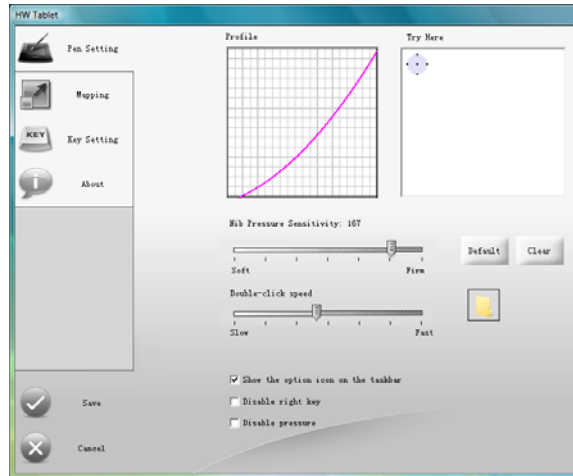
Transparency: Set the transparency for Hanvon startup toolbar.

# CHAPTER 6 Bundled Software

## 6.1.3 Tablet Setting



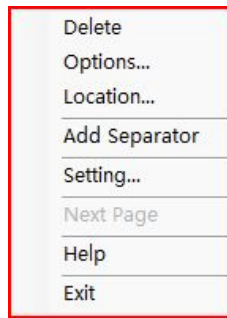
Click  to enter tablet setting interface shown as following figure:



## CHAPTER 6 Bundled Software

---

### 6.1.4 Shell right key menu



Delete: Delete the current icon or separator;

Options: Change name and icon of the current software

Location: Find the target file position which the software is saved


Add Separator: Add the separator in the location where the cursor is placed.

Setting: ( the function is the same as System Menu )

Next Page: Turn to next page

### 6.2 PenWrite



Click  on the shell to open **PenWrite** application.

Open WORD application for editing, Then users may handwriting input words ,sentences, punctuation&symbol and numbers in **English**、**German**、**French**、**Italian**、**Dutch**、**Spanish**、**Swedish**、**Portuguese (Portugal)**、**Portuguese (Brazil)**.The handwriting characters would be turn to be text automatically to the location where the cursor was placed.



Click  on the shell to open PenWrite Asia application.

Open WORD application for editing, Then users may handwriting input characters、 punctuation&symbol and numbers in Simplified Chinese、 Traditional Chinese (Hong Kong) 、 Traditional Chinese(Taiwan) 、 Japanese and Korean.

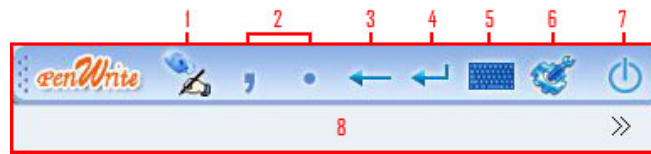
Note: Please confirm the cursor's location firstly, and then start handwriting.

PenWrite and PenWrite Asia have the same main interface.

Instruction as following:


# CHAPTER 6 Bundled Software

## Icon explanations:



## Basic functions

1. Pen & Mouse Mode


Switch the status between Pen & Mouse Mode  \

Pen Mode  \ Mouse Mode 


2. Comma & Period

Edit "," or "." by clicking  Comma or  Period

3. Backspace

Backspace by clicking 

4. Enter

Enter by clicking 

5. Keyboard

## CHAPTER 6 Bundled Software


---

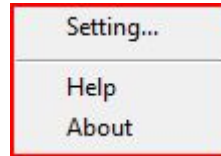


Click  to startup software keyboard

### 6. System Menu



Click  to enter an interface shown as following figure:



### 7. Exit



Click  to exit

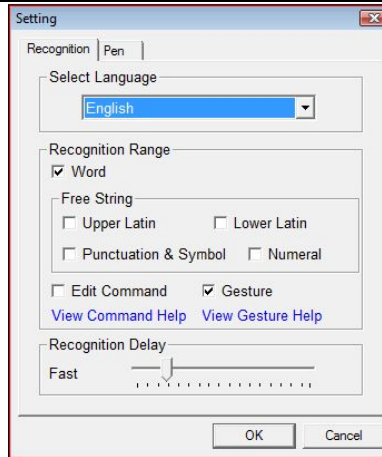
### 8. the candidate area for recognized results

## Setting

Click “setting...” shown as following figure:

◇ **Setting for PenWrite—Recognition**

## CHAPTER 6 Bundled Software



[Select Language] Choose recognition language between 9 kinds of languages;

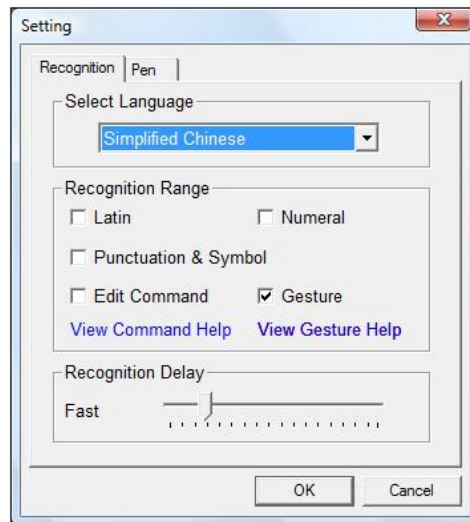
[Recognition Range] Choose the recognition range;

[Recognition Delay] Adjust the recognition interval time.



## CHAPTER 6 Bundled Software

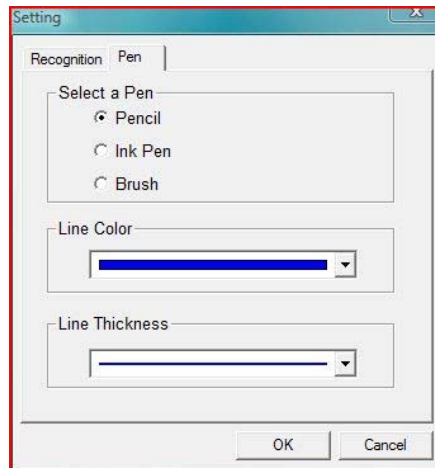
### ◇ Setting for PenWrite Asia—Recognition



[Select Language] Choose recognition language between Simplified Chinese、 Traditional Chinese (Hong Kong) 、 Traditional Chinese (Taiwan) 、 Japanese and Korean. [Recognition Range] Choose the recognition range;  
[Recognition Delay] Adjust the recognition interval time.

## CHAPTER 6 Bundled Software

### ◇ Setting—Pen



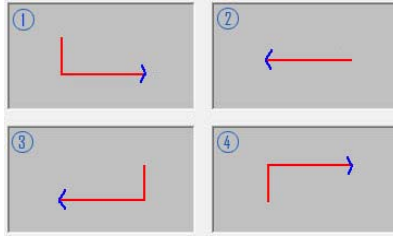
Selecting the pen type, line colors or line thickness

## CHAPTER 6 Bundled Software

---

### ✧ Gesture:

- ① Space、②Backspace、③Enter、④Tab



### ✧ Edit Command:

$\wedge$  = Ctrl

For example:

$\wedge A$

Ctrl+A

$\wedge X$

Ctrl+X

### Edit Command supported as bellow:

Ctrl + A

Ctrl + C

Ctrl + V

Ctrl + X

Ctrl + Z

## CHAPTER 6 Bundled Software

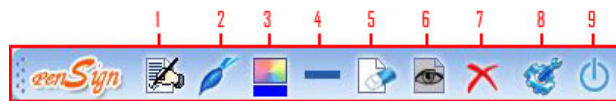
### 6.3 PenSign



Click  to open PenSign application

- The program can be used in Microsoft Office 2000 and the version higher, Word、Excel、PowerPoint ( Notice: please don't write directly in Word outline\Excel pagination preview\PowerPoint insert images );
- Support the Word Pad and Windows Draw (when the script will be shown opacity, it wouldn't support "Hide Sign & Show Sign" and "Delete Sign" functions) .
- The signature size and position can be adjusted freely.

#### Icon explanations:



1. Start Sign & End Sign;  
Start and end to sign;
2. Pen(Brush \ pencil \ Ink Pen)  
Select pen type
3. Color  
Select line color
4. Width

## CHAPTER 6 Bundled Software

---

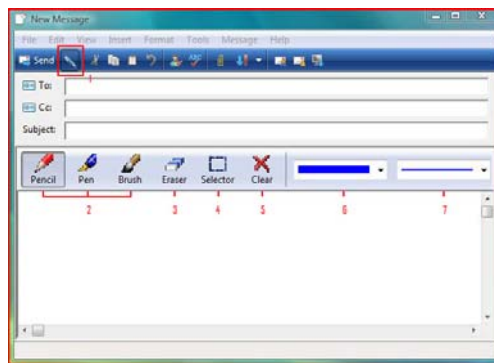
Select line thickness

5. Clear all  
Clear current script
6. Hide Sign & Show Sign  
Show or hide your signature
7. Delete Sign  
Delete all script
8. System Menu  
Help & About
9. Exit

### 6.4 PenMail



Click  to open PenMail application.





**Icon explanations:**

## CHAPTER 6 Bundled Software

---

### 1. PenMail

When pressing icon  down, it will switch to handwriting status; and it will return to text editor status

when lifting icon .

### 2. Pen(Brush \ pencil \ Ink Pen)

Select pen type

### 3. Eraser

Erase the individual script

### 4. Selector

Select part script

### 5. Clear

Clear all script

### 6. Colors

Select line color

### 7. Width

Select line thickness


The program can be used in Outlook Express 6.0 and the version higher in Windows 2000/XP OS, and Windows Mail in Windows Vista OS. When the system operating is Windows 2000, please install IE6 and Outlook Express 6 or higher version before applying PenMail.

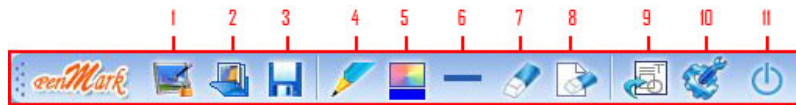
PenMail can also support Vista x32 but not Vista x64;

## CHAPTER 6 Bundled Software

### 6.5 PenMark



Click  to open PenMark application; you can handwrite marks on the screen or pictures.



#### **Icon explanations:**

1. Start\exit screen annotation
2. Open picture
3. Save
  - Files can be saved as BMP、JPG、TIF、PNG or GIF format
  - Suggest you to select TIF format when the file has several pages.
  - Default saving path: C:\Documents and Settings\Administrator\My Documents\My Pictures.
4. Pen(Brush \ pencil \ Ink Pen\ High Lighter)  
Select Pen type
5. Color  
Select line color
6. Width  
Select line thickness

## CHAPTER 6 Bundled Software

---

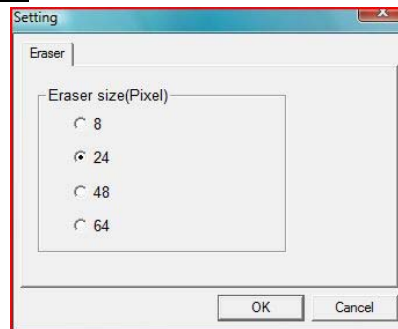
7. Eraser  
Clear part script
8. Clear all  
Clear all script
9. Tools  
Insert line\figure\text\pictures



10. System Menu  
Setting、 Help、 About

11. Exit

### **Setting—Eraser**



Setting the size of eraser



### 6.6 WhiteBoard

Click  to open WhiteBoard application.



#### **Icon explanations:**

1. Save
  - The document can be saved as BMP、JPG、TIF、PNG or GIF format
  - Suggest you to select TIF format when the document has multiple pages.
  - Default saving path: C:\Documents and Settings\Administrator\My Documents\My Pictures.
2. New Page
  - Add a new page
3. Pen (Brush \ pencil \ Ink Pen\ High Lighter)
  - Select pen type
4. Color
  - Select line color
5. Width
  - Select line thickness
6. Eraser

## CHAPTER 6 Bundled Software

---

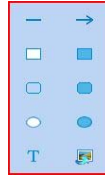
Clear part script

7. Clear all

Clear all script

8. Tools

Insert Line\figure\text\pictures




9. Magnifier

- Click the right key, the menu will popup, you can set spotlight size, shape, radio, high quality display, show border and exit
- Exit the application directly by pressing ESC

10. Spotlight



- Click  down arrow, the menu will popup, you can set spotlight transparency, shape and exit.
- Exit the application directly by pressing ESC

11. System Menu

Setting、 Help、 About

12. Previous

Turn to previous page

## CHAPTER 6 Bundled Software

---

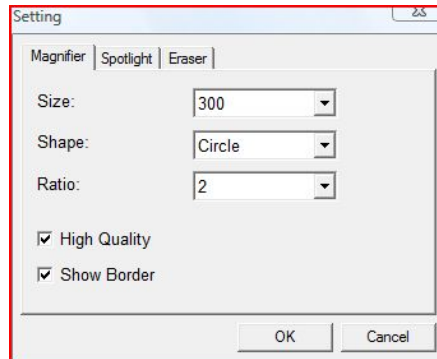
13. Next

Turn to next page

14. Exit

### **Setting**

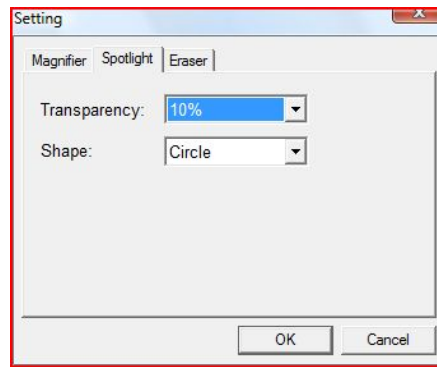
◇ Setting--Magnifier



Setting magnifier size, shape, ratio, high quality display and show border

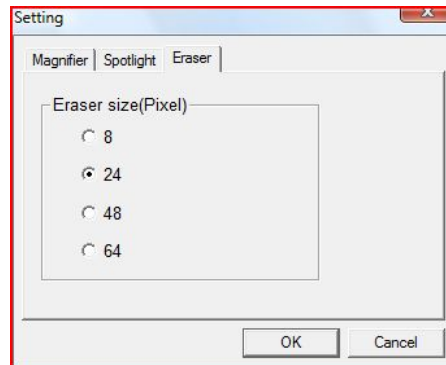
◇ Setting—Spotlight

## CHAPTER 6 Bundled Software



Setting spotlight transparency and shape

### ◇ Setting—Eraser



Setting the size of eraser

## Chapter 7 Maintenance

### 7.1 Pen Holder

#### Front View of Pen Holder

a. Vertical Pen Slot

b. Horizontal Pen Slot



Front view with pen placed in horizontal slot

#### Back View of Pen Holder

a. Pen Nib Storage

Slide the switch toward green dot to open, then pick pen nibs from Pen Nib Storage; slide the switch toward red dot to close the Pen Nib Storage

b. Storage hole for extra pen nibs

c. Pen Nib Exchanger





### 7.2 Exchange Pen Nib

- Insert the old nib to Pen Nib Exchanger, hold tight and pull the pen out of the pen nib exchanger.



- Pulling out the pen nib  
After pulling the pen out of the exchanger, the old pen nib stayed in Pen Nib Exchanger.



- Insert a new pen nib into the pen.

**Note:** The pen holder is not included in all series of products. If you purchased the product does not have the pen holder as mentioned above, please using tweezers, grasp the nib and draw it out. Once removed, a new nib may be inserted into the pen.

### 7.3 Cautions

- Do not put the tablet on a metal surface, such as iron or aluminum alloys.
- Due to a CRT monitor's electromagnetic radiation, do not use the drawing tablet too close to a CRT monitor.
- Please do not stack tablets while battery has been installed in compartment; otherwise, the tablet cannot enter sleep mode, and battery power will be consumed very fast. Taking out battery is recommended in this case.
- For receivers and Class B digital

This product has been tested and complies with the specifications for a Class B digital device, pursuant to Part 15 of the FCC Rules. These limits are designed to provide reasonable protection against harmful interference in a residential installation. This equipment generates, uses, and can radiate radio frequency energy and, if not installed and used according to the instructions, may cause harmful interference to radio communications. However, there is no guarantee that interference will not occur in a particular installation. If this equipment does cause harmful interference to radio or television

## MAINTENANCE

---

reception, which is found by turning the equipment off and on, the user is encouraged to try to correct the interference by one or more of the following measures:

Reorient or relocate the receiving antenna

Increase the separation between the equipment or devices

Connect the equipment to an outlet other than the receiver's

Consult a dealer or an experienced radio/TV technician for assistance

- Changes or modifications not expressly approved by the party responsible for compliance could void the user's authority to operate the equipment.



## Appendix

### Warranty

#### Limited Warranty

Hanwang Technology warrants that this product is free from any defects in workmanship or materials under normal use and conditions for a period of two (2) years for Europe or one (1) year for the U.S. from the date of original purchase. If such a defect is discovered within this warrant's limitations, Hanvon agrees, at its sole discretion, to repair or replace the same item with one of equal value, free of charge to the original consumer purchaser.

This warranty shall not apply if this product is modified, misused, tampered with, subject to abnormal working conditions, or transferred to someone other than the original consumer purchaser.

#### Warranty Redemption for US Market Only

Should this product fail to function in a satisfactory manner, please return it to the store where it was originally purchased. Please be sure to contact us at [service@hanvon.com](mailto:service@hanvon.com) to obtain a Return Merchandise Authorization Number before you return it, and within your email please include your name, address, phone number, a copy of the original receipt, serial number and the reasons for returning the product.

## APPENDIX

---

Should this fail to resolve the matter and service is still required by reason of any defect or malfunction during the warranty period, Hanvon Corporation will repair or replace this product without charge (except for a charge for handling, packing, return UPS/postage, and insurance).

### **Technical Support**

Should you have any questions or comments, please contact us via [tech@hanvon.com](mailto:tech@hanvon.com), or visit our website at:

Global site: <http://www.hanvon.com>

US site: <http://usa.hanvon.com>

### **Online Registration for US Market Only**

To better serve our customers, please take the time to register online at <http://usa.hanvon.com>. This information is for internal use only. No information provided will be distributed to soliciting organizations.

The registration also allows you to receive valuable information and enjoy special savings on upgrades for products.

**Thank you for choosing Hanvon products.**