



# Infrared Interactive Whiteboard User Manual

## Contents

Foreword .....	2
System Requirement .....	3
Product Introduction .....	4
Mounting Guidance .....	5
Calibration .....	7
Whiteboard Calibration .....	7
Hot Key Calibration .....	9
Hints & Tips.....	12
Whiteboard Use.....	13
Trouble Shooting .....	14
Specification .....	15
Electronic Feature:.....	16
FCC Statement .....	16

# Foreword

- Don't expose the product in the rain or humidity to reduce fire risk and electric shock.
- Keep whiteboard away from fire and electric attack and avoid long-time sun exposure.
- The product net weight is as heavy as 15 kilos. Please use expansion screw for stable fixation to ensure the safety.
- Don't stare at the light from projector for a long time, especially for the children.
- This manual is only available for QOMO IR interactive whiteboard.
- Plastic pens or Qpen optional provided by QOMO are available to use with whiteboard.
- The product adopts infrared positioning technology. Keep the whiteboard away from external hard objects' squeezing to avoid deformation.
- Make sure whiteboard cable is well connected with computer. It's better to hide the USB cables to avoid pulling.
- Please use the extension cables in the box. Other cables may not match with the product.
- Do not scratch the whiteboard surface or drill & pin on the whiteboard.
- Please refer to software User Manual for software using introduction. No relevant description in this manual.

# System Requirement

## **The Lowest Hardware Requirement:**

CPU: 1.0GHz×86

Memory: 256M or above

Display card: support 256 colors

Hard disk: 1G

Support resolutions: 800×600, 1024×768, 1280×1024

USB1.1 port

## **Configuration Recommended:**

CPU: 2.0GHz×86

Memory: 512M or above

Display card: support 256 colors

Hard disk: 2G

Support resolutions: 1024×768, 1280×1024

USB2.0 port

Operation System: Microsoft Windows XP/7/8.1/10 (32bit or 64bit)

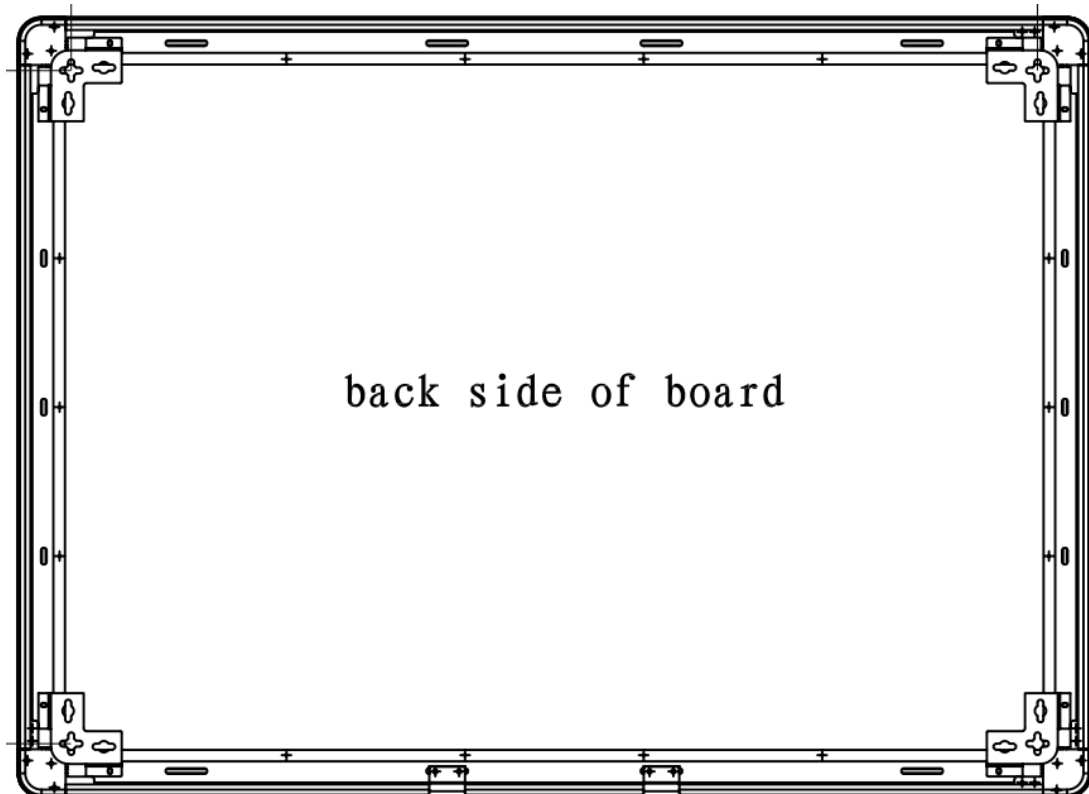
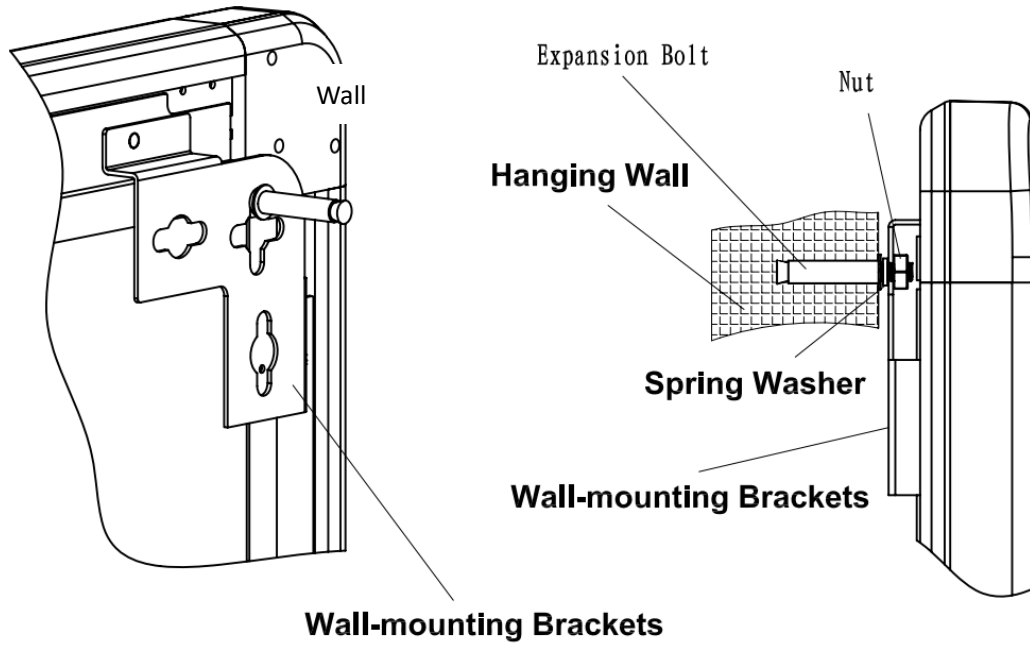
# Product Introduction

QOMO's Interactive Whiteboard uses infrared technology. Working seamlessly with a projector and computer, the QOMO Interactive Whiteboard provides more convenient, interactive and effective presentations. Perfect for school auditoriums, conference rooms, trade shows, symposiums and lecture halls. Users can write on the screen using the included pens, wand or the user's finger.

- **Writing:** Write, draw and perform mouse functions with your finger. The Whiteboard displays your penmanship instantaneously.
- **Annotating:** The user can operate and annotate over any computer applications, or save notes directly into Flow!Works Pro Software, including PowerPoint, Word, Excel, MPEG JPEG, AVI and etc.
- **Touch System:** QOMO Interactive Whiteboard is sensitive to touch speed and can be used as a high-resolution interactive white board.
- **Touch Recognition:** Can recognize touch of a single-finger, certain gesture, right-click, left-click and double click.
- **Hot Keys:** Hot keys located on the side(s) of the boards providing quick access to frequently used keys.
- **Open customize:** QOMO whiteboard software support Open functions customize. All the buttons functions on the pen can be defined in your favor.
- **Intelligent Pen-tray:** it supports intelligent pen-tray, four color pens option (blue, green and black)
- **Free Drive Mode:** HID standard design, free drive mode.
- **Energy Saving:** Power consumption less than 0.5 W and works without external power supply.

# Mounting Guidance

## Hardware Mounting



1. Set four holes on the wall based on indicated whiteboard size;(Hole size:  
 $\varnothing=12\text{mm}$ , Height=60mm)
2. Secure the expansion bolts (M8\*60mm) into the four holes and use nuts to tighten firmly into wall; (Keep nuts 5mm with Spring Washer)
3. Align the Wall-mounting Brackets onto the bolts; make sure the Wall-mounting Bracket holes should be fixed between the Spring Washer and and nuts.
4. Check and screw the nuts.

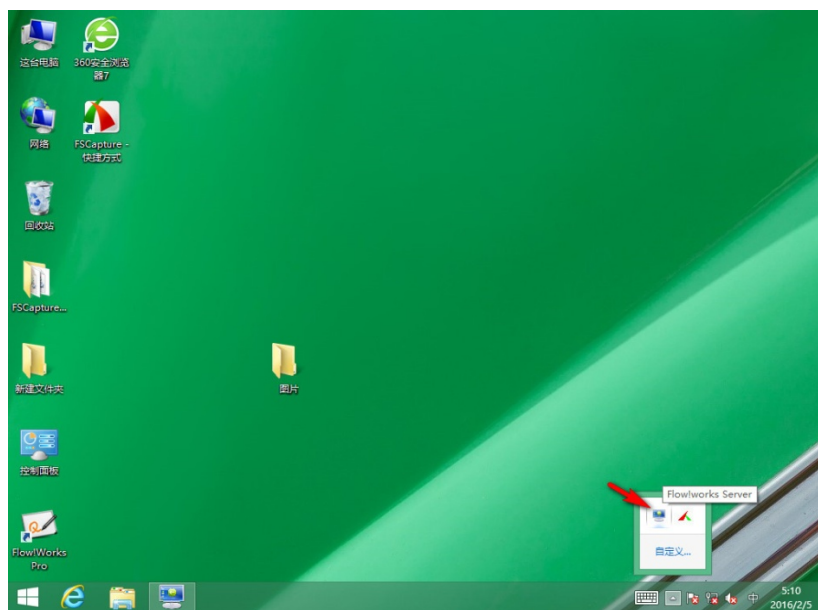
### **Interactive System Construction**

1. Make sure the whiteboard has been well fixed before interactive system construction.
2. Adjust the corresponding position between projector and whiteboard so that the entire image projected is within the whiteboard writing area.
3. Connect the USB cable into the whiteboard USB port. Make sure to use the USB cable in the box instead of others.
4. Connect the other end of USB cable computer USB interface.
5. Connect computer with projector.

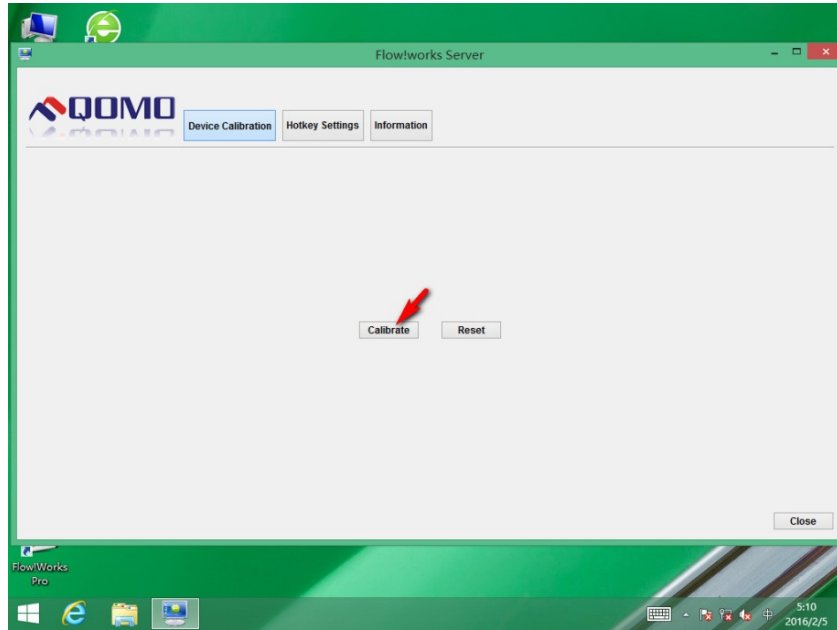
# Calibration

## Whiteboard Calibration

1. Flow!Works Server Pro appears at the lower right of taskbar after drive installation (as figure 1). Left-click Flow!Works Server Pro and proceed to main drive interface (as figure 2).

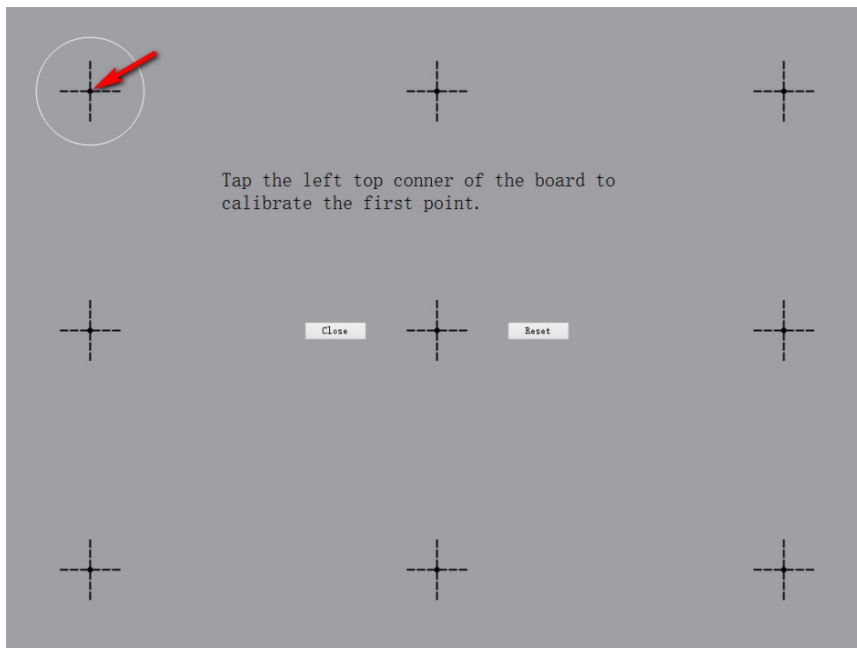


(Figure 1)



(Figure 2)

2. Click “Calibrate” button to pop up calibration interface (as figure 3); Click and hold the center of the cross. Complete the calibration process as instructed.



(Figure 3)

3. Confirmation interface pops up after positioning. Click “Yes” after it completes (as figure 4)





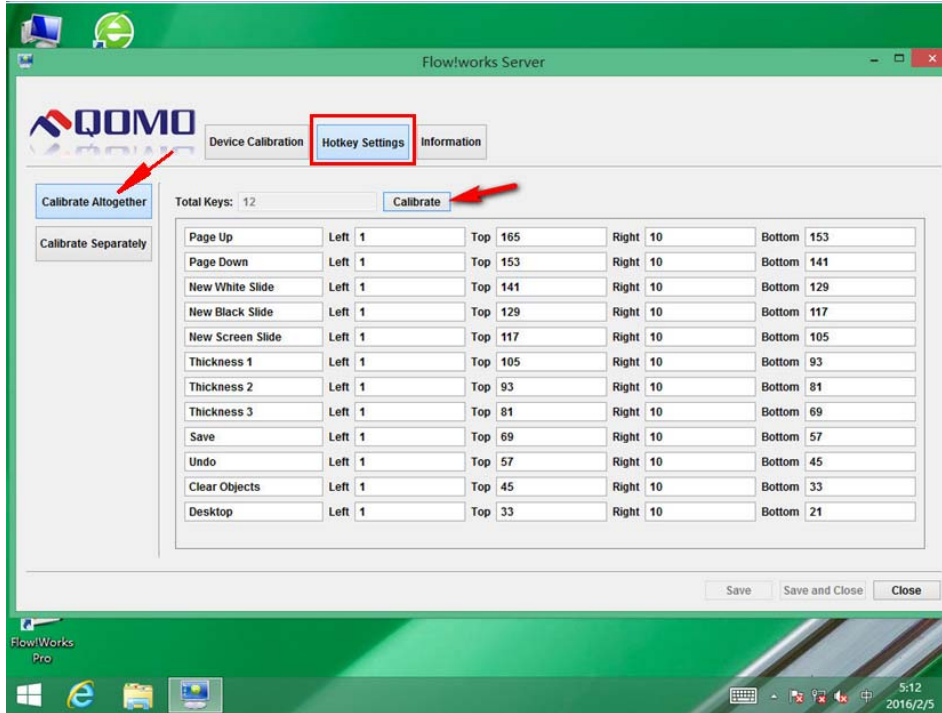
(Figure 4)

## Hot Key Calibration

Flow!Works Pro server offers two kinds of hotkeys calibration, either 12 keys calibration together or separately is accepted.

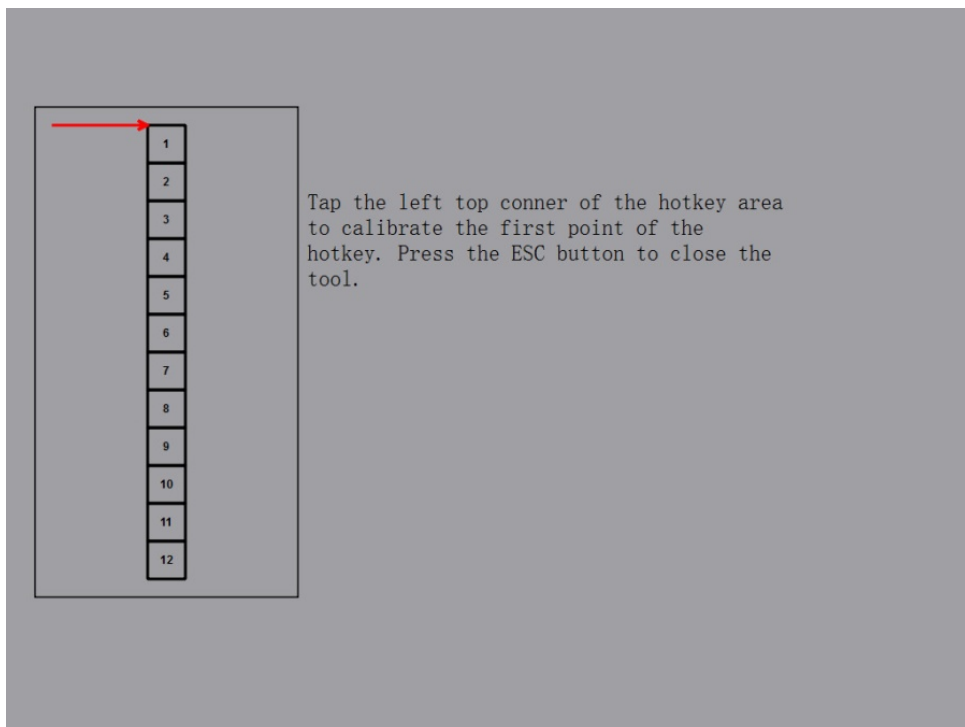
- **Calibration together**

1. Click "Hotkey Settings" button to enter into the hotkey calibration window (as figure 5).



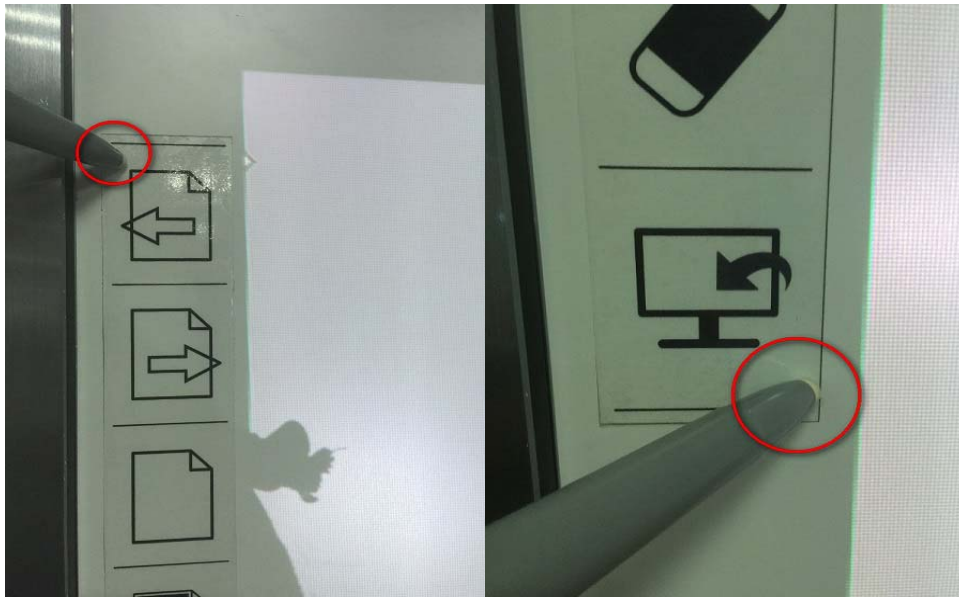
(Figure 5)

2. Choose “Calibrate Altogether” and click “Calibrate” button to enter into hotkey calibration interface. Tap corresponding position according to the red arrow’s point (as figure 6).



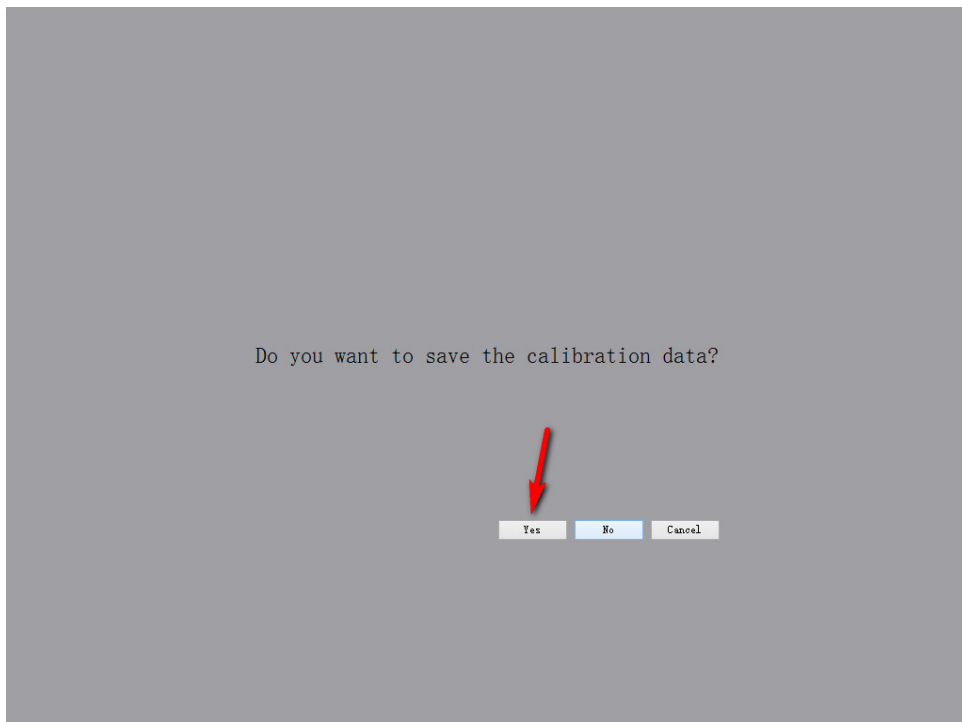
(Figure 6)

3. Hotkey calibration in real environment reference (as figure 7).



(Figure 7)

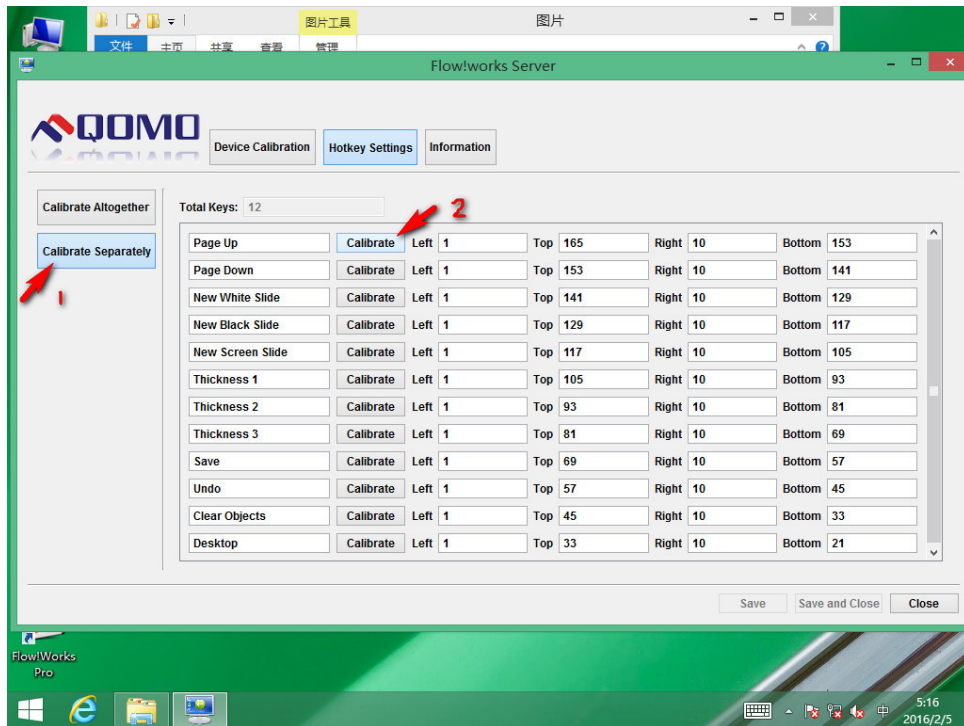
4. Click “Yes” to save when confirmation window pops up after it completes (as figure 8).



(Figure 8)

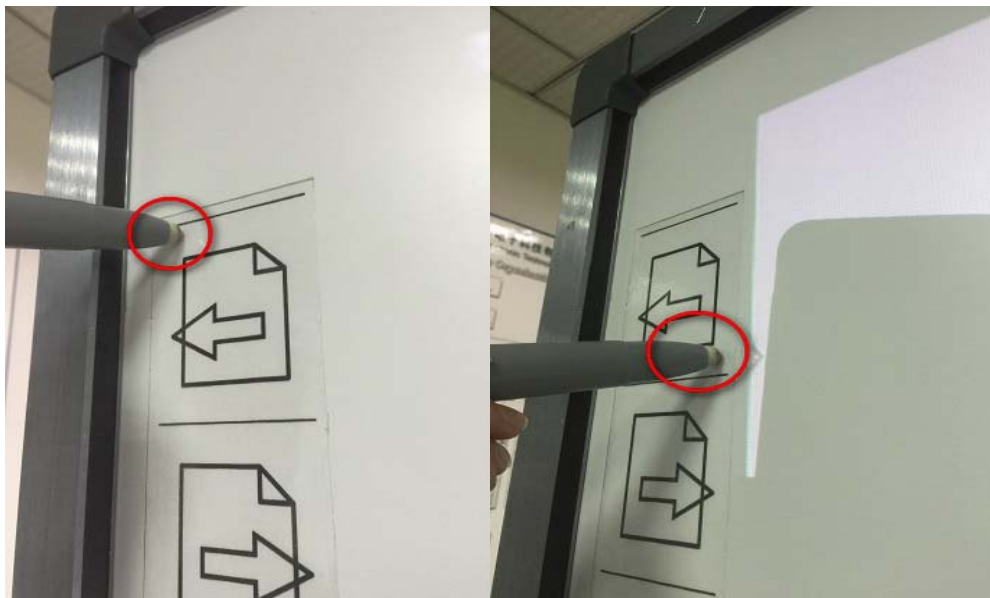
- **Calibrate Separately**

1. Choose “Calibrate Separately” and click every single “Calibrate” button back of the hotkeys (as figure 9).



(Figure 9)

2. Every single hotkey calibration reference (as figure 10).



(Figure 10)

## Hints & Tips

- To ensure the writing accuracy, use the pen provided rather than a finger to

perform calibration.

- Calibration errors may cause touch functions failure. In that case, please perform calibration again.

- Tap “ESC” on the keyboard to cancel the current positioning process.

- The calibration interface varies for different software versions. But calibration way is similar.

- Hotkey calibration fit for whiteboard with hotkeys. Please follow the instructions to calibrate.

## **Whiteboard Use**

Whiteboard can work normally after calibration, even without opening Flow!Works Pro. Some common operations can be implemented rapidly through whiteboard.

### **Click**

Use pen or finger to control the cursor position on the whiteboard to achieve mouse left key click function. It is generally used to select or point to objects.

### **Double-click**

Double click with pen or finger on the whiteboard to achieve mouse double-click function.

Double click the Flow!Works Pro icon on the desk to start the software.

### **Right Click**

Hold finger or pen on the whiteboard for about 2S to achieve mouse right click function.

## Trouble Shooting

Trouble Shooting			
Failure	Phenomenon/Feature	Possible Cause	Solution
Whiteboard fails to work	Flow!Works Server is not running.	Flow!Works Server was not started.	Start the Server.
		Flow!Works Server was not installed.	Install the Server.
	Drive icon is red.	Whiteboard was not connected with computer.	Use cable provided to connect the computer.
		Whiteboard fails to self-inspection.	Check whether there are objects pressing against the whiteboard. If there are, please clear them away.
		Drive damage.	Reinstall the drive after uninstallation.
	Drive icon is green.	The positioning is inaccurate.	Re-positioning according to the reference above.
Parts of calibration cross points are invisible on the whiteboard.	Calibration cross cursor is invisible on the whiteboard.	Projector mis-position cause Image projected exceeding the whiteboard area.	Adjust the projector.

Unable to write	Mouse cursor is moving while there's no handwriting.	Software is not in writing mode.	Switch to the writing mode and the mouse cursor icon shows pen.
	Mouse cursor icon shows pen but fail to write in writing mode.	The pen stroke color are the same as or similar to the background color.	Change pen stroke color or background.
Writing accuracy deviation	Large deviation at some parts of the whiteboard.	Inaccurate positioning.	Re-positioning.
		Projective distortion	Adjust projector.
The writing delayed		Conflict with antivirus software.	Close the antivirus software.
		Too many programs are running at the same time.	Shut down programs not used for the moment.
		Hardware configuration is too low.	Upgrade hardware configuration.

## Specification

High precision infrared touching frame, Resolution up to 32767\*32767 through interpolation algorithm;

Supporting multi-touch: 2 points, 4 points and 6 points;

Resolution: 32767\*32767;

Response Speed:  $\leq 20$ ms;

Touching Accuracy: 90% touching area  $\pm 2$ mm;

Input Mode: Finger, pen or any other opaque object;

Output Mode: Coordinate output;

Number of Clicks in Theory: Infinite;

The Minimum Input Object: 5mm;

Anti-phototaxis: All angle anti-highlight

Interface Type: USB;

## **Electronic Feature:**

Power Supply Mode: USB;

Supply Voltage: DC+5V±5%;

Operating Current: <200mA.

## **FCC Statement**

This equipment has been tested and found to comply with the limits for a Class B digital device, pursuant to part 15 of the FCC Rules. These limits are designed to provide reasonable protection against harmful interference in a residential installation. This equipment generates, uses and can radiate radio frequency energy and, if not installed and used in accordance with the instructions, may cause harmful interference to radio communications.

However, there is no guarantee that interference will not occur in a particular installation. If this equipment does cause harmful interference to radio or television reception, which can be determined by turning the equipment off and on, the user is encouraged to try to correct the interference by one or more of the following measures:

- Reorient or relocate the receiving antenna.
- Increase the separation between the equipment and receiver.
- Connect the equipment into an outlet on a circuit different from that to which the receiver is connected.



**Notes:**

1. Please keep this manual for future reference.
2. This manual is available for all series of infrared whiteboard so there may be some differences between the actual product and the product explained in this manual.