

# WST-702 Wireless PIR Motion Sensor with Pet Immunity

## Installation Instructions

### Specifications

**Frequency:** 345 MHz

**Operating Temperature:** 32°-120°F (0°-49°C)

**Battery:** One 3Vdc Lithium CR-123A (1550 mAh)

**Operating Humidity:** 5-95% RH non-condensing

**Battery life:** 5 years

**Compatibility:** Honeywell and 2GIG receivers

**Pet Immunity:** 50 lbs (22 kg)

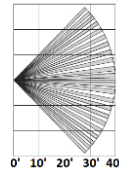
**Supervisory interval:** 60 min(approx.)

**Coverage Area:** 40 x 40 feet (12m), 90 degree angle

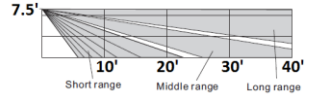
**Light Immunity:** 2000 lux (EN50131-2-4)

### Coverage Pattern:

#### Top View



#### Side View



### Enrollment:

To enroll the motion sensor, set your panel into programming mode. Refer to the manual for your specific alarm control panel for details on programming mode. When prompted by the panel, enter the 7 digit serial number which is printed on the sensor label. Make sure the loop number is set to Loop 1.

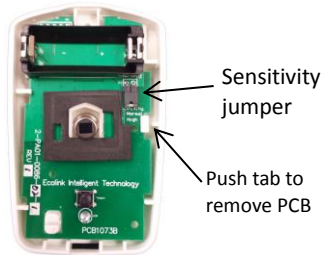
Alternatively, the motion sensor can be enrolled by triggering wireless transmissions. To do this, hold down the tamper button on the sensor while inserting the battery. The red LED will begin to flash. After 30 seconds the red LED will stop flashing and the sensor can be triggered by waving your hand in front of the motion sensor. The sensor will transmit every time motion is detected. Trigger the motion sensor as many times as is required by your panel until the panel recognizes the sensor's serial number.

### Sensitivity Jumper Settings:

For normal sensitivity motion detection leave the jumper in the default setting (on). Remove the jumper if increased sensitivity to movement is desired.

### Mounting:

Mount the motion sensor at 7.5 feet (2.3 meters) above the floor. Remove the sensor cover to expose the circuit board then remove the circuit board from the back cover by gently pressing that plastic tab as shown in the diagram. With the board removed you have access to both the flush mount and corner mount screw knock outs. Remove the appropriate knockouts and use the included screws to mount in the desired mounting location. It is recommend to ensure there is a tight seal around the knockouts to prevent bugs from entering the sensor and causing false alarms. Replace the circuit board and snap the front cover onto the back cover.



### Walk Test Mode:

Walk test mode can be used to test the motion sensor detection coverage area. To enter walk-test mode hold down the tamper button while inserting the battery. The red LED will begin to flash indicating that the motion sensor is warming up. After 30 seconds the LED no longer flashes and the motion sensor is ready to detect motion. The LED will illuminate each time motion is detected. Once the LED goes out, the sensor is ready to detect motion again. Walk test mode ends after twenty motion detections or if no motion is seen for two minutes.

## Operation:

During normal operation, the LED will not turn on even if motion is detected. This is done to maximize battery life. Furthermore when motion is detected and a signal is transmitted to the panel, the sensor will not transmit again for a period of three minutes.

## Replacing the Battery:

When the battery is low, a signal will be sent to the control panel. To replace the battery remove the front cover to expose the battery, the replace with a CR123A lithium battery. Note the correct orientation of the battery as shown on the circuit board.

## FCC / Industry Canada Compliance Statement

This equipment has been tested and found to comply with the limits for Class B digital devices, pursuant to Part 15 of the FCC Rules. This device complies with part 15 of the FCC Rules. Operation is subject to the following two conditions: (1) This device may not cause harmful interference, and (2) this device must accept any interference received, including interference that may cause undesired operation. These limits are designed to provide reasonable protection against harmful interference in a residential installation. This equipment generates uses and can radiate radio frequency energy and, if not installed and used in accordance with the instruction manual, may cause harmful interference to radio communications. However, there is no guarantee that interference will not occur in a particular installation. If this equipment does cause harmful interference to radio or television reception, which can be determined by turning the equipment off and on, the user is encouraged to try to correct the interference by one or more of the following measures:

- Re-orient or relocate the receiving antenna
- Increase the separation between the equipment and receiver
- Connect the equipment to an outlet on a different circuit from the receiver
- Consult the dealer or an experienced radio/TV contractor for help.

Warning: Changes or modifications not expressly approved by Ecolink Intelligent Technology Inc. could void the user's authority to operate the equipment.

This device complies with Industry Canada licence-exempt RSS standard(s). Operation is subject to the following two conditions: (1) this device may not cause interference, and (2) this device must accept any interference, including interference that may cause undesired operation of the device.

C'et appareil est conforme la norme d'Industrie Canada exempts de licence RSS. Son fonctionnement est soumis aux deux conditions suivantes: (1) c'et appareil ne peut pas provoquer d'interférences, et (2) c'et appareil doit accepter toute interférence, y compris les interférences qui peuvent causer un mauvais fonctionnement de la dispositif.

FCC ID: XQC-WST702 IC: 9863B-WST702

## Warranty

Ecolink Intelligent Technology Inc. warrants that for a period of 5 years from the date of purchase that this product is free from defects in material and workmanship. This warranty does not apply to damage caused by shipping or handling, or damage caused by accident, abuse, misuse, misapplication, ordinary wear, improper maintenance, failure to follow instructions or as a result of any unauthorized modifications. If there is a defect in materials and workmanship under normal use within the warranty period Ecolink Intelligent Technology Inc. shall, at its option, repair or replace the defective equipment upon return of the equipment to the original point of purchase. The foregoing warranty shall apply only to the original buyer, and is and shall be in lieu of any and all other warranties, whether expressed or implied and of all other obligations or liabilities on the part of Ecolink Intelligent Technology Inc. neither assumes responsibility for, nor authorizes any other person purporting to act on its behalf to modify or to change this warranty, nor to assume for it any other warranty or liability concerning this product. The maximum liability for Ecolink Intelligent Technology Inc. under all circumstances for any warranty issue shall be limited to a replacement of the defective product. It is recommended that the customer check their equipment on a regular basis for proper operation.

