



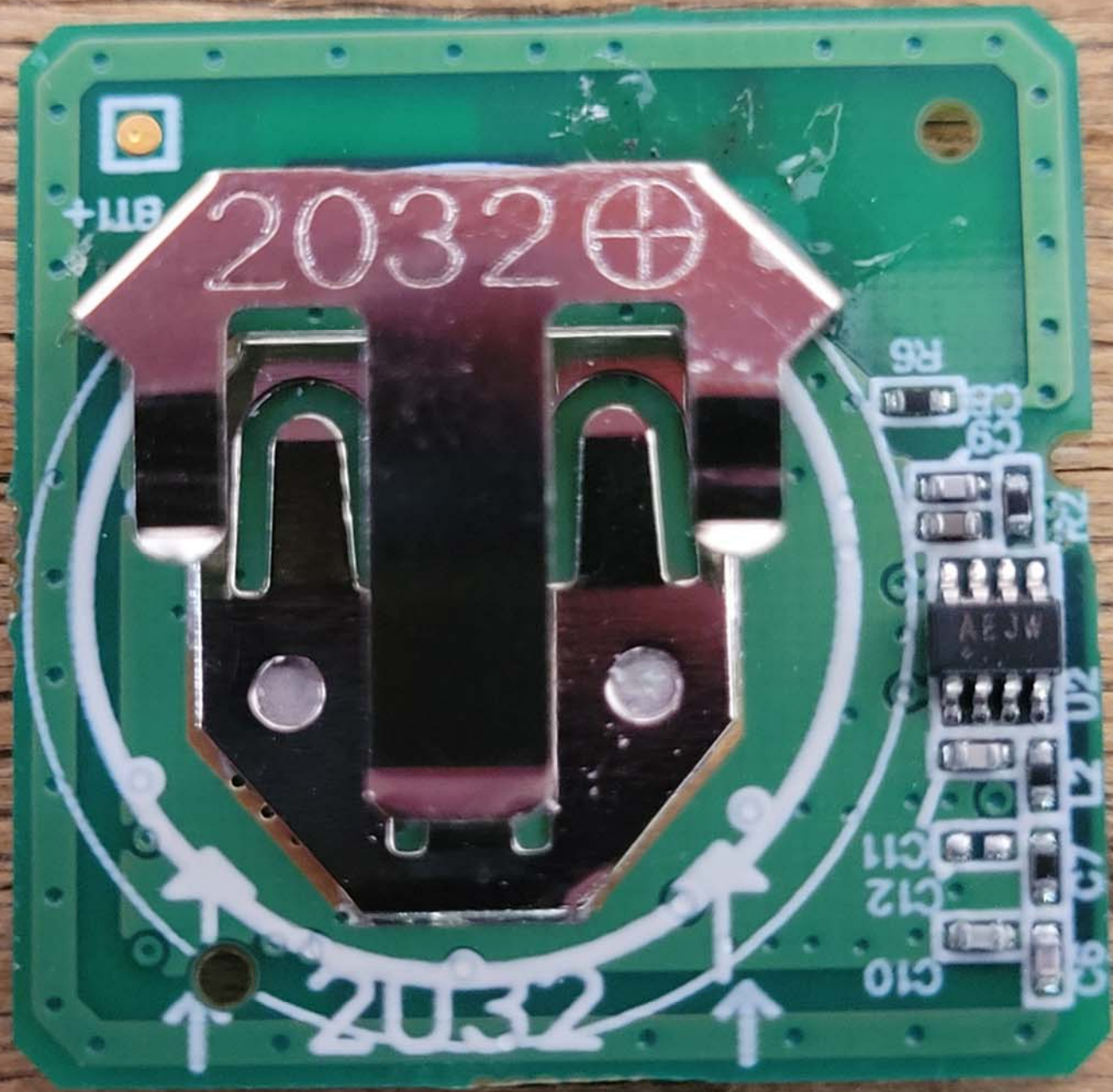
Inside View of the EUT #1



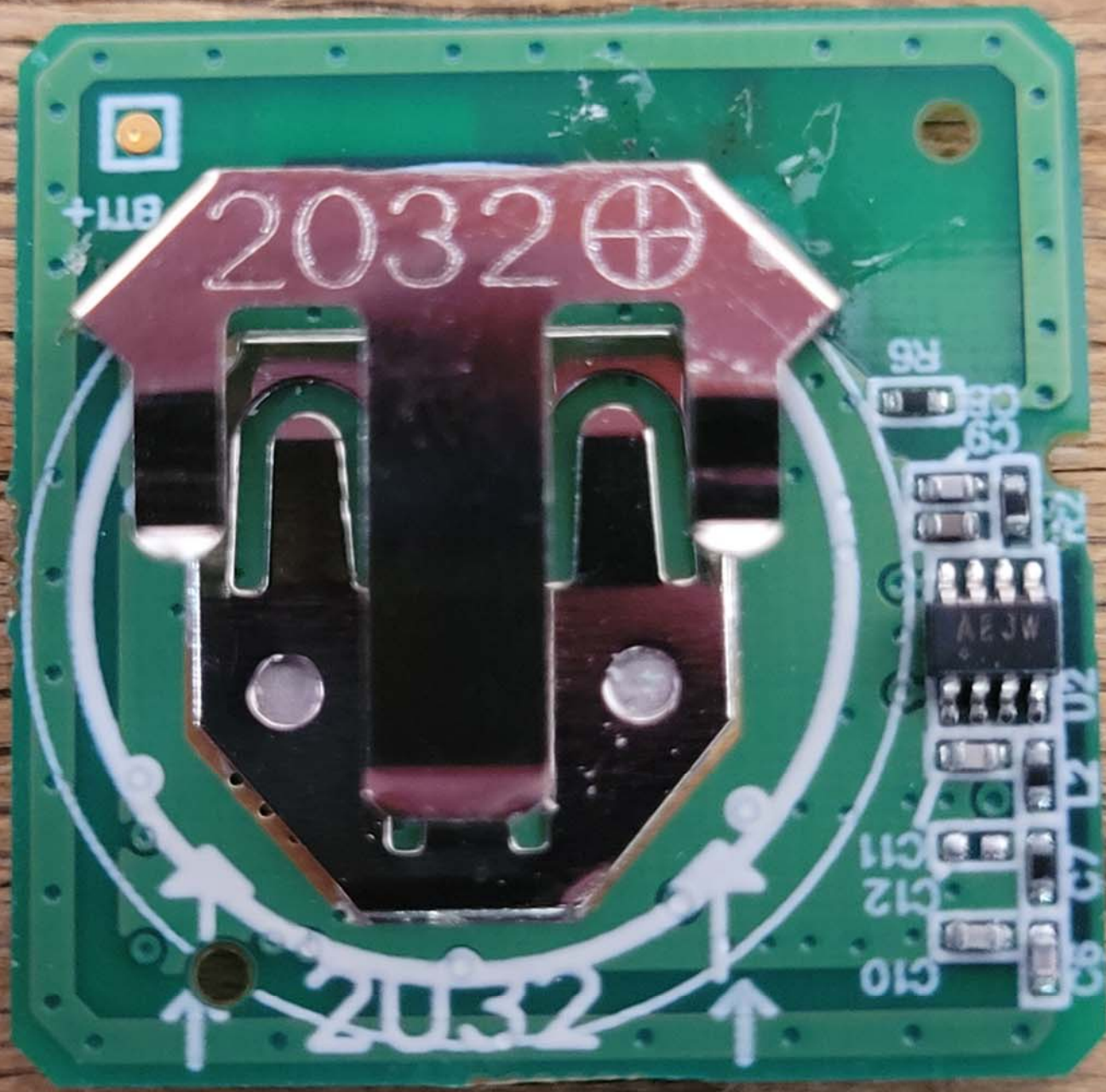
Inside View of the EUT #2



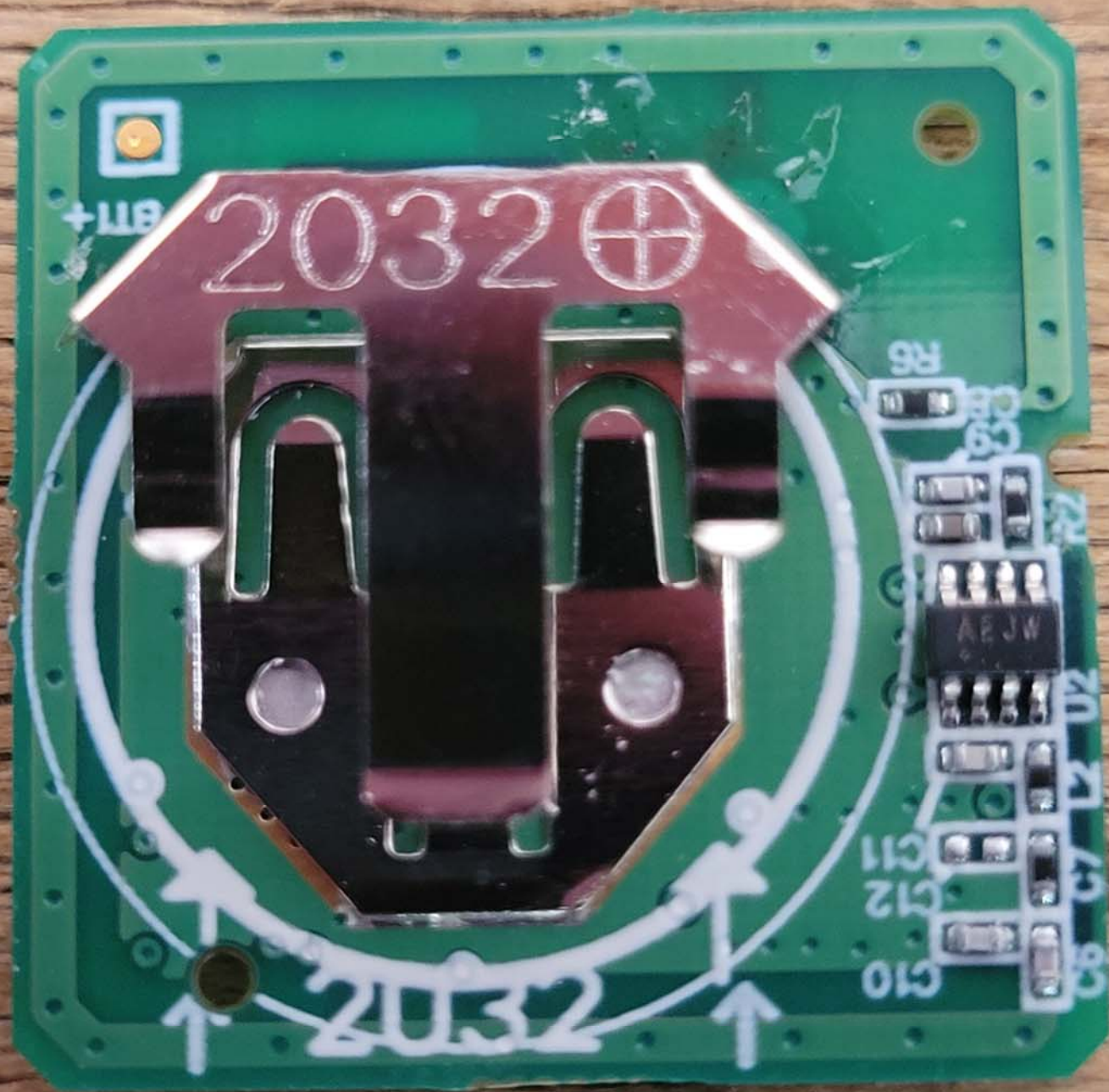
Inside View of the EUT #3



Top View of the PCB - View #1



Top View of the PCB - View #2



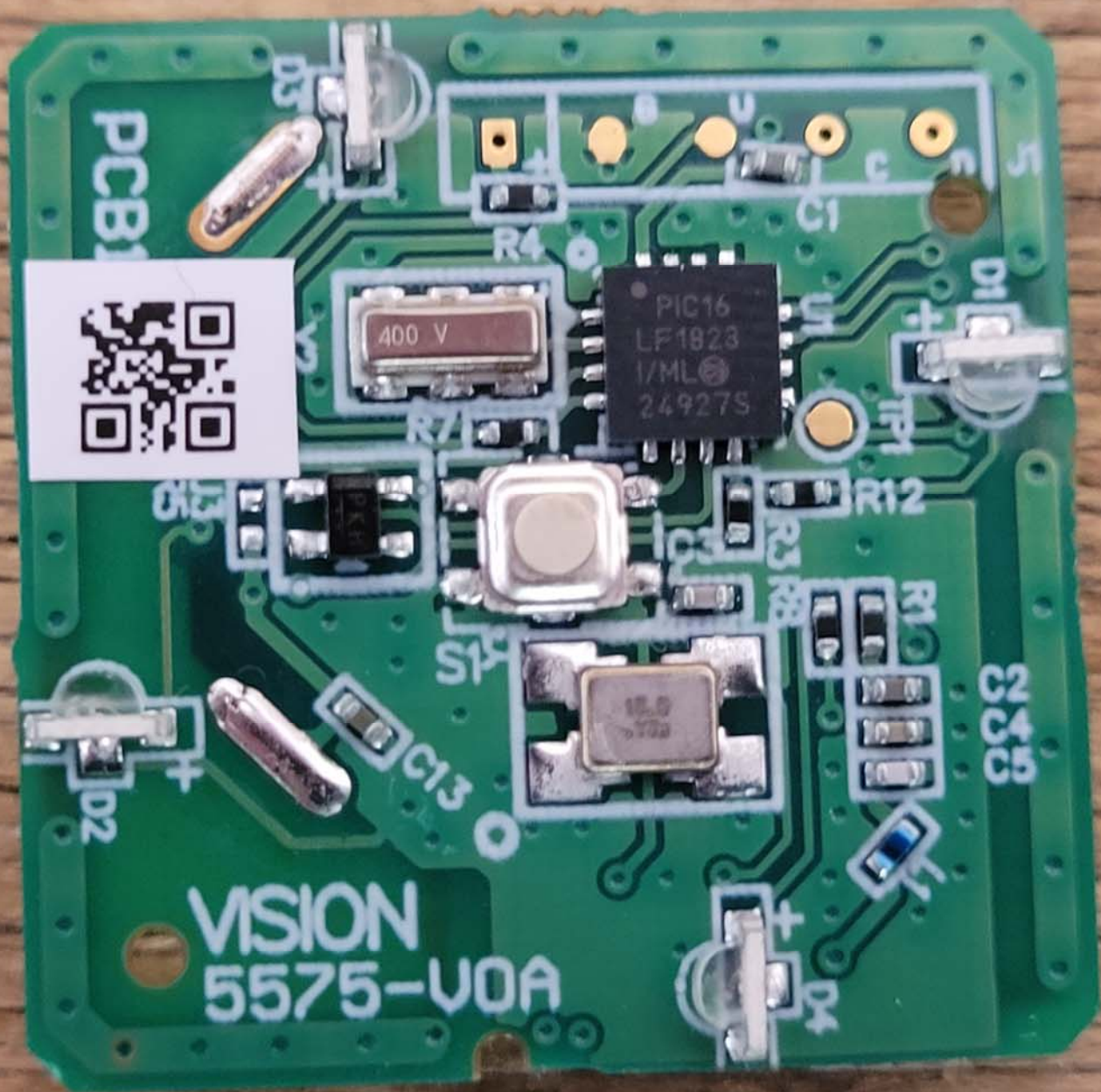
Top View of the PCB - View #3



Bottom View of the PCB - View #1



Bottom View of the PCB - View #2



PCB1

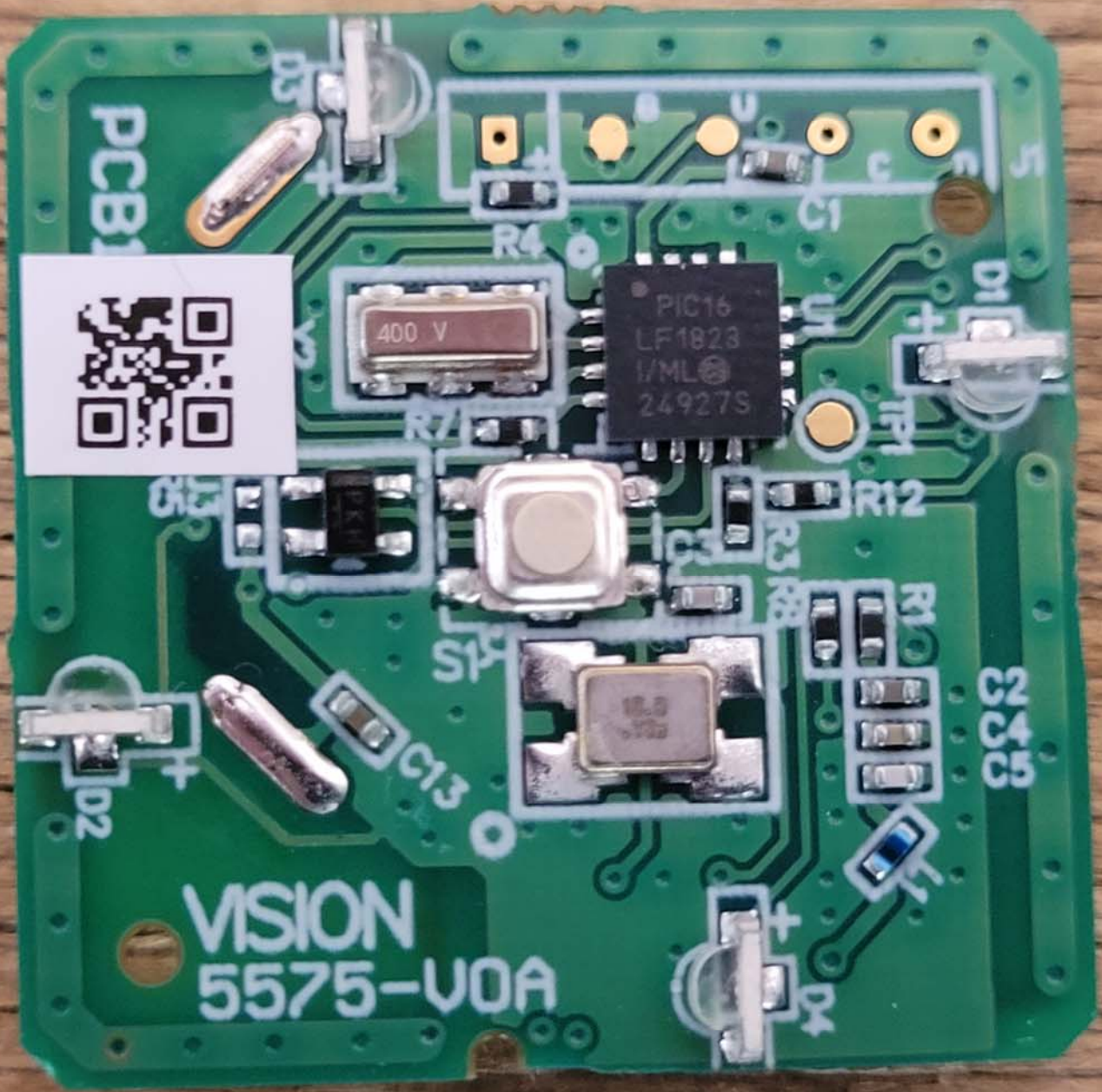


400 V

PIC16
LF1823
I/ML
24927S

VISION
5575-U0A

5575



PCB1



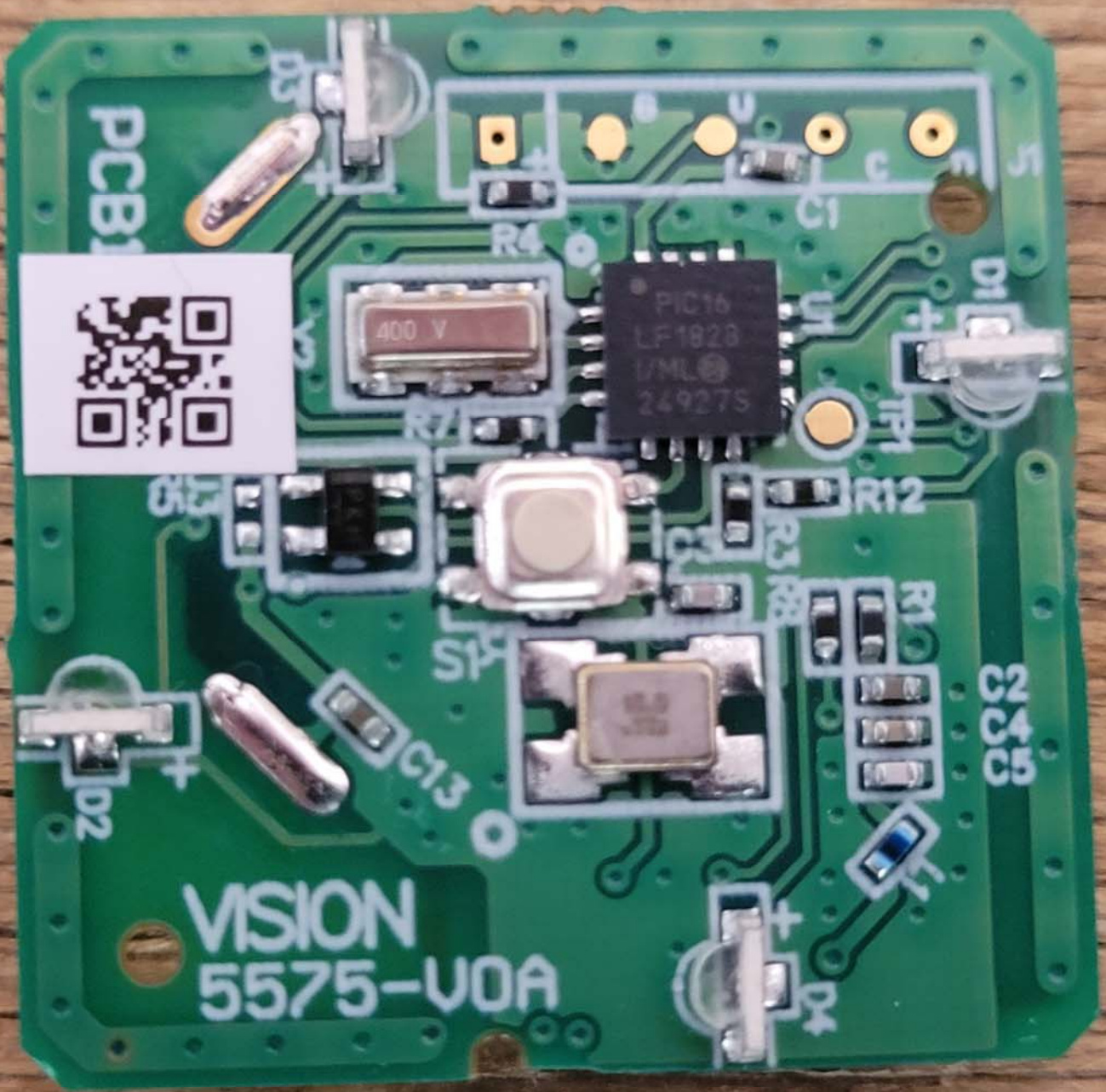
PIC16
LF1823
I/ML
24927S

400 V

10.0
MHz

VISION
5575-U0A

C2
C5



PCB1

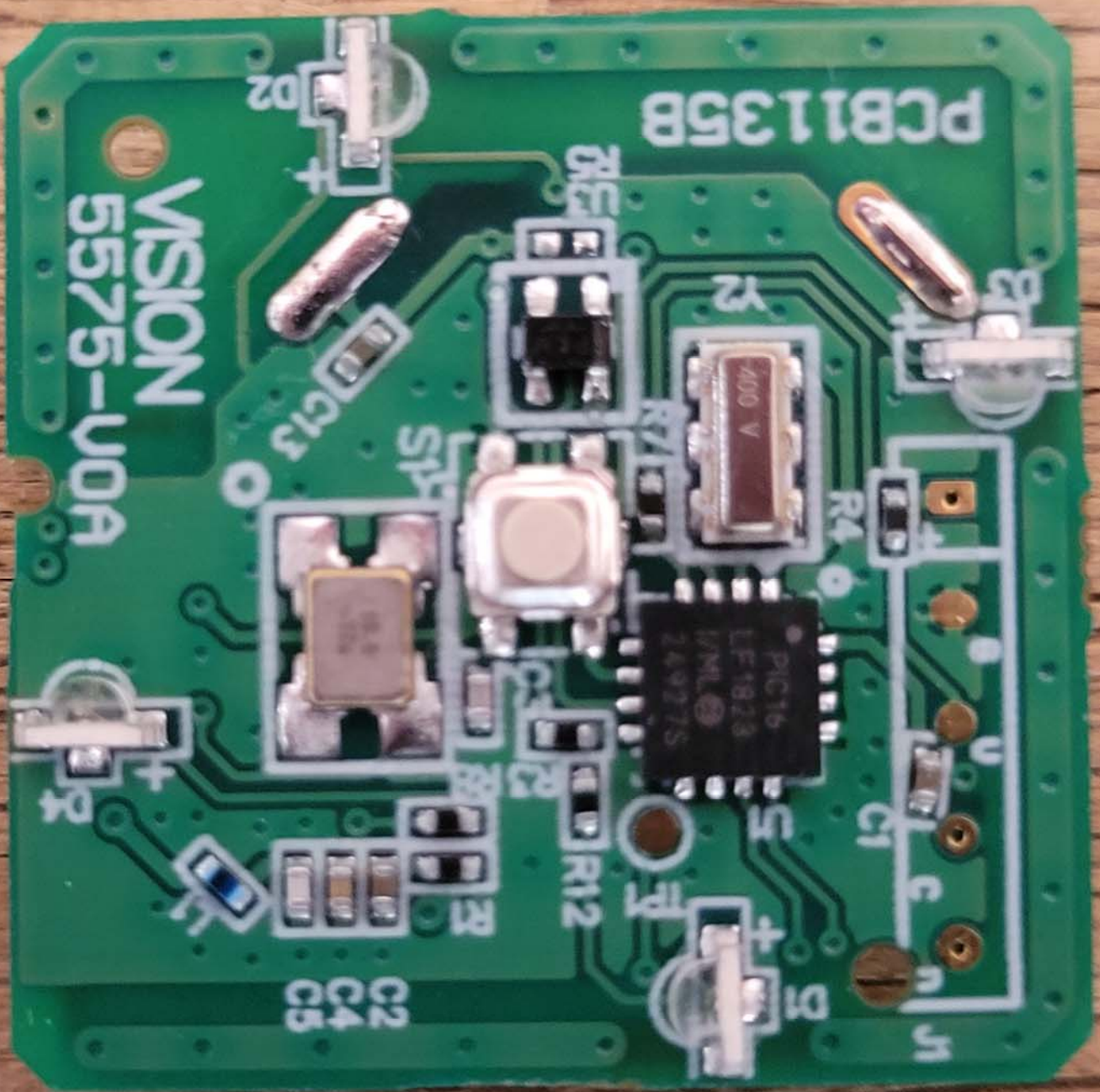


400 V

PIC16
LF1823
I/ML
249275

VISION
5575-U0A

C2
C3
C4
C5



PCB1135B

VISION
5575-U0A

PC823

Y2

C2
C4
C5

C13

C1
C

R12

R1

SP

R4

S

DC

D2

S

U

N

D1

Y2

R7

R2

R3

R4

R5

R6

R7

R8

R9

R10

R11

R12

R13

R14

R15

R16

R17

R18

R19

S

U

N

D1

Y2

R7

R2

R3

R4

R5

R6

R7

R8

R9

R10

R11

R12

R13

R14

R15

R16

R17

R18

R19

R20

S

U

N

D1

Y2

R7

R2

R3

R4

R5

R6

R7

R8

R9

R10

R11

R12

R13

R14

R15

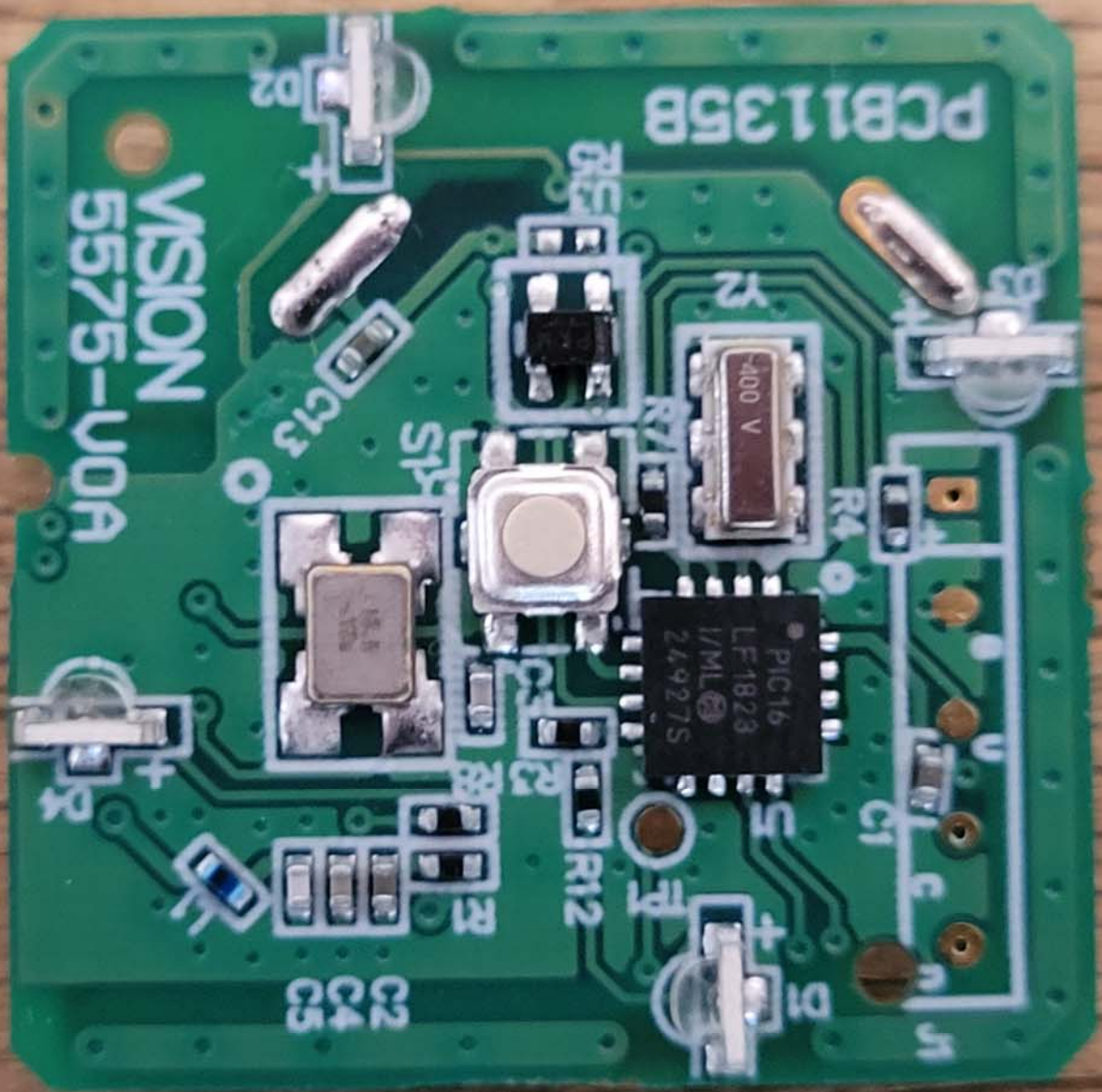
R16

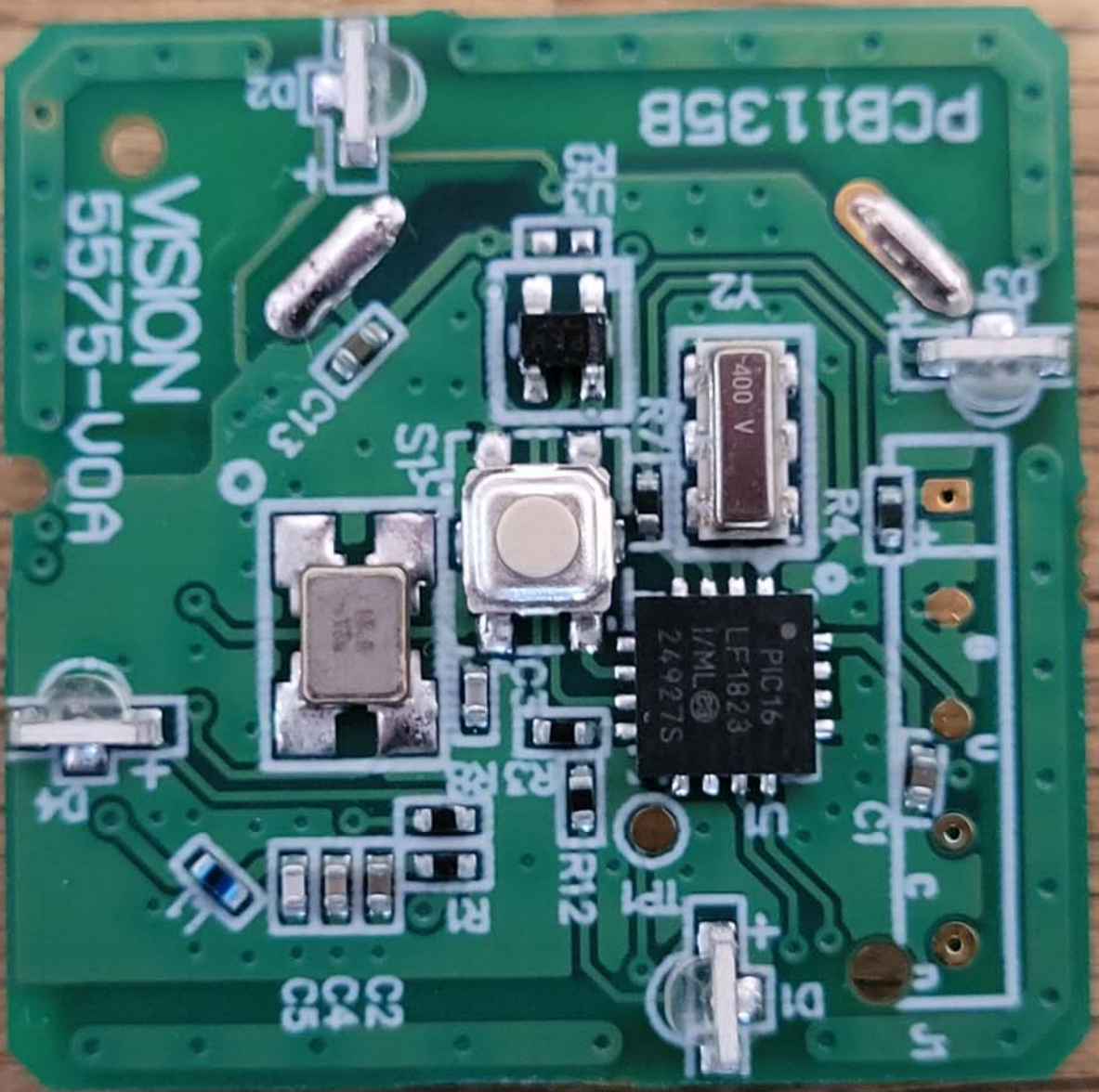
R17

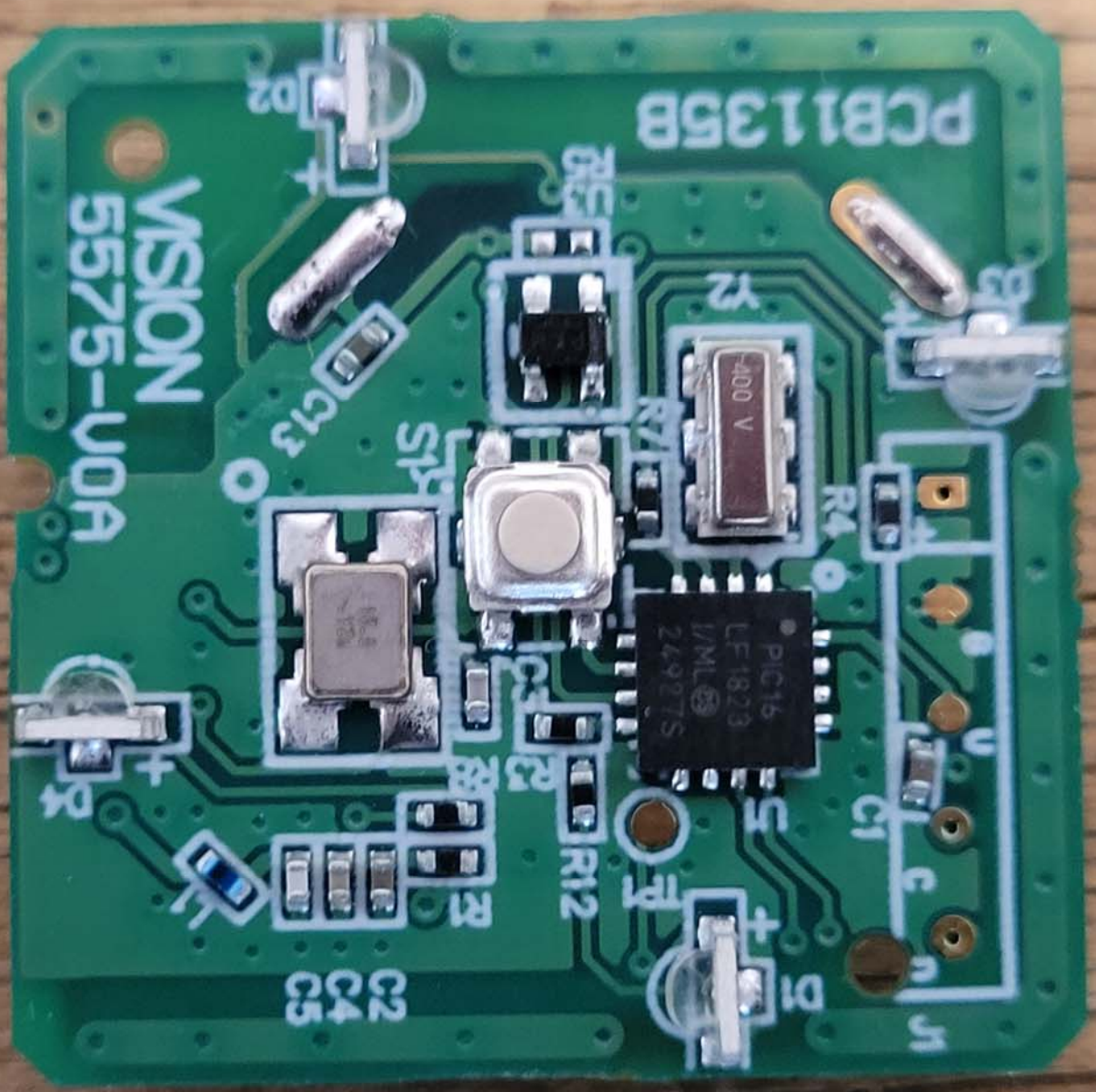
R18

R19

R20







PCB1135B

VISION
5575-U0A

400 V

PIC16
LF1823
I/M/L
24927S

C2
C3
C4
C5

R12

R1

R2

R3

R4

R7

R8

C1

C

S

D1

+

+

+

+

+

+

+

+

+

+

+

U

U

U

U

U

U

U

U

U

U

U

U

U

U

U

U

U

U

U

U

U

U

U

R4

R

R

R

R

R

R

R

R

R

R

R

R

R

R

R

R

R

R

R

R

R

R

Y2

Y

Y

Y

Y

Y

Y

Y

Y

Y

Y

Y

Y

Y

Y

Y

Y

Y

Y

Y

Y

Y

Y

D2

D

D

D

D

D

D

D

D

D

D

D

D

D

D

D

D

D

D

D

D

D

D

G3

G

G

G

G

G

G

G

G

G

G

G

G

G

G

G

G

G

G

G

G

G

G

SPK

S

S

S

S

S

S

S

S

S

S

S

S

S

S

S

S

S

S

S

S

S

S

D1

D

D

D

D

D

D

D

D

D

D

D

D

D

D

D

D

D

D

D

D

D

D

+

+

+

+

+

+

+

+

+

+

+

+

+

+

+

+

+

+

+

+

+

+

+

+

+

+

+

+

+

+

+

+

+

+

+

+

+

+

+

+

+

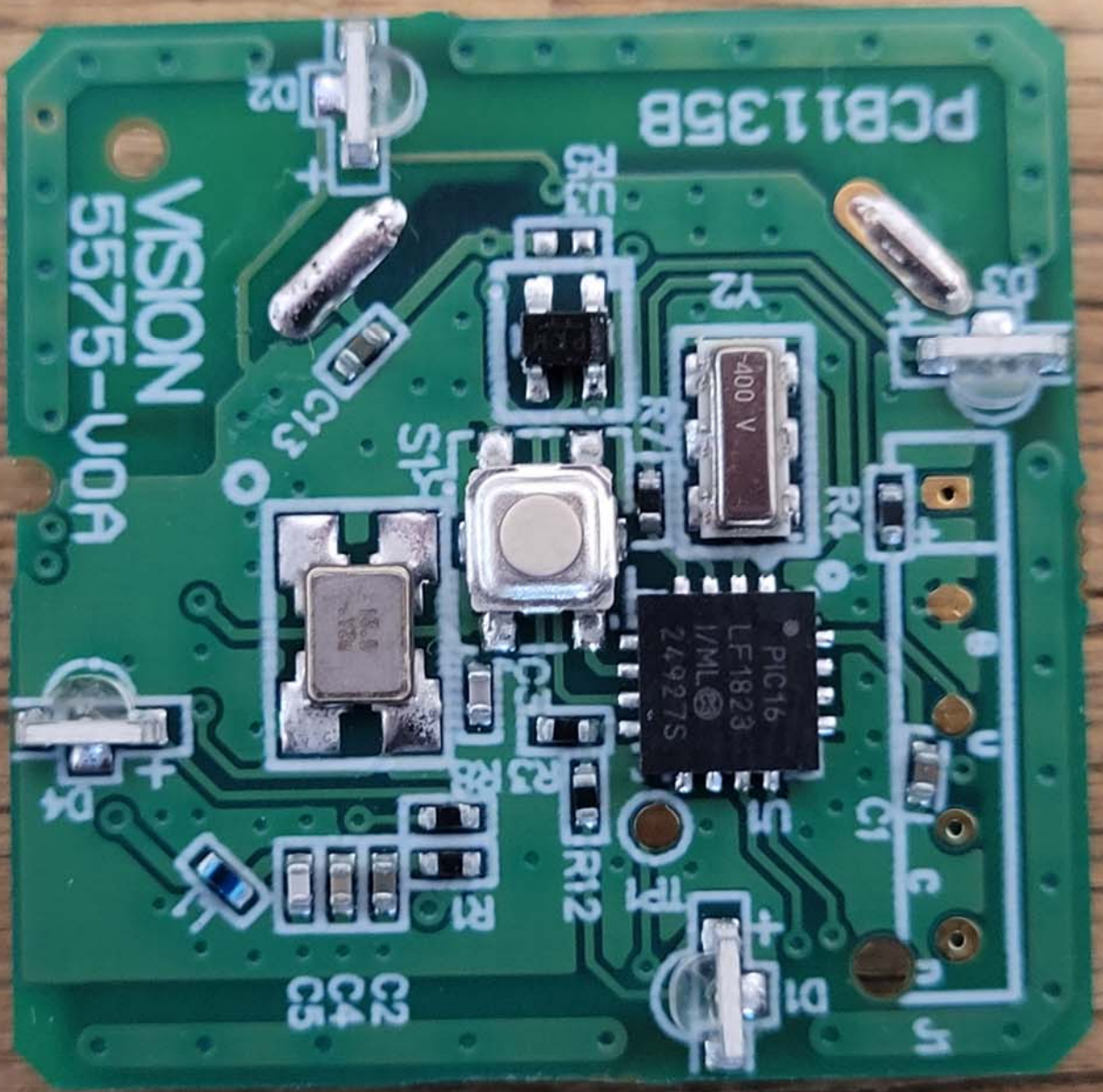
+

+

+

+

+



VISION
5575-U0A

PCB1135B

PIC16
LF1823
I/ML
24927S

400 V

C2
C4
C5

R12

R3

R8

R1

R2

C1

C

S1

S

U

R4

Y2

Q1

C13

S14

D2

B3

R

+

+

+

+

+

+

+

+

+

+

+

+

+

+

+

+

+

+

+

+

+

+

+

+

+

+