

# Ecolink Status Indicator

## Model#: STAT433

### Status Module Installation Manual and User Guide

**Ecolink Bridge (Model#: BOOM433)** - this is the main control units for this system. It must be located in the same room but not more than 50ft of your Zwave gateway.

**Status Module (Model#: STAT433)** - this device provides the current status of the sensor installed on your doors and windows. This should be located at your main entry/exit door (to check status as your leave) or by your bedroom (to check status before you go to bed at night)

**Door/Window sensor (Model#: DOOR433)** - these are the sensors that you will mount on your doors and windows. It will transmit back to the unit if the door/window is opened or closed.

### Setup

The suggested process for configuring your system is as follows.

1. Power up the bridge
2. Enroll your door/window sensors
3. Enroll the status module
4. Install your door/window sensors
5. Test your system
6. Mount your status module
7. Include your Insynctive network into a Zwave gateway (optional)

### Power up the bridge

Your Ecolink Bridge comes ready to plug into any standard electrical outlet. However there are a number of jumpers located in the battery compartment that control the door chime feature. You may want to adjust this prior to plugging it in as they are not accessible after you do so.

The jumper options are as follows:

Volume		Chime		Operation
J1	J2	J3	J4	
off	off	X	X	Volume controlled by Z-wave GUI
off	on	X	X	Low volume
on	off	X	X	Med volume
<b>on</b>	<b>on</b>	<b>X</b>	<b>X</b>	<b>High volume (default)</b>
X	X	off	off	No chime
X	X	off	on	Chime when door or window is opened
X	X	on	off	Chime when door or window is unlocked
<b>X</b>	<b>X</b>	<b>on</b>	<b>on</b>	<b>Chime when door or window is opened or unlocked (default)</b>



The first time you plug in your bridge, the light will turn green, then start flashing blue.

## Enroll Door/window sensors

Unpack your sensors, including the magnet.  
Slide the top cover to disengage it from the bottom.  
Remove the top cover to reveal the battery.  
Remove the plastic tab that is installed underneath the battery.  
Ensure the battery is firmly in place.

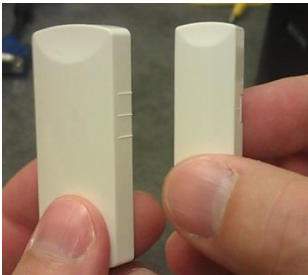
At this point you can decide to replace the white cover or switch to the brown cover. The brown cover, when installed, will cover the bottom piece so only brown is visible after installation.

**After you power up the sensor, you have approximately 2 minutes to enroll the sensor into the bridge. If more than 2 minutes has elapsed, just remove the battery and reinstall to get another 2 minute window.**

To start the learn process, you must press the learn button on the bridge. This is the bottom button located on the side of the bridge



When you press this, the bridge will start to flash orange.



To trigger a learn command from the sensor, touch the magnet to the sensor three times within 2 seconds.

If successful the bridge will flash green and beep once for 2sec.

**At this point it is recommended to record the sequence in which sensors were enrolled and where this sensor will be mounted. This will prove useful when including your system into a Zwave network.**

Repeat this step until all your sensors have been enrolled into the bridge.

When you are done, press the learn button again to exit this mode.

As you move the magnet back and forth within range of the sensor bridge will beep. This is the chime feature and is useful to determine when someone opens a door or window within the home. It also confirms the sensor was properly enrolled.

## Enroll Status Module

Unpack the status module and insert the 2 AA batteries.  
Do not put the battery cover back on.

Press the learn button on the bridge to activate the learn mode.  
The bridge will start to flash orange.

Press the button on the status module that is located underneath the battery compartment



If successfully enrolled the status module will beep.

Press the learn button on the bridge to exit this mode.

At this point you can replace the battery cover of the status module.

At this point, one of the bottom LEDs (open or closed) may be illuminated. This is showing the status of the sensor you have enrolled but have not yet installed.

### **Installing and testing your sensors**

Your sensors come in two parts, the actual transmitter and the magnet. You must choose a location on the door or window such that when installed the maximum distance between the sensor and the magnet is 0.5 inches. It is preferred (but not mandatory) that the sensor be mounted on the frame and the magnet on the door.

Double sided tape is included with your sensor to mount the devices. Ensure the surface is clean and dry. Apply the tape to the sensor then press firmly into the designated location on the door or window. Hold for 10 seconds. Repeat for the magnet.



Once your sensor is correctly installed, open and close the door or window. As you open you should hear the bridge beep. Note the bridge will not beep when you close the door.

Repeat these steps until all your sensors are installed.

### **Using the status module to test**

If you are in a part of the home where you cannot hear the bridge, you can use the status module to help you test the devices you are installing.

To do so you must make sure all the devices that are enrolled in the system are in the closed state. So if already mounted the door and window must be closed, if not mounted the magnets must be touching the sensor.

You can confirm this as the status module will illuminate the green (closed) LED.

Then simply bring the status module with you as you install your device, when you open and close the door you have installed the sensor on, the status module will illuminate the open (Red) or closed (green) light accordingly.

### **Mount the status module**

Once the installation is complete, mount the wall bracket of the status module to the desired location and install the status module. The status module is designed to be off, when motion within 2-3 ft is detected directly in front of it, it will turn on, and request status from the bridge. After a few minutes of not detecting motion it will turn off.

If the open LED (red) flashes, that indicates that it has lost communication to the bridge. If this condition persists, you may have to relocate the status module or relocate the Ecolink Bridge.

### **Include your Insynctive network into a Z-wave Gateway (optional)**

To successfully operate with a Z-wave gateway, the Ecolink bridge must be located in the same room but no more than 50ft of your Z-wave gateway.

To include your system, disconnect the Ethernet cable from the back of your gateway.  
Unplug your Ecolink Bridge.

Press the include (or +) button on the gateway.

Plug in your Ecolink Bridge (the Bridge should illuminate green, then flash blue)

Once the bridge communicates successfully with the gateway, it will beep and start flashing blue rapidly.

Once it does that, press the include (+) button on the gateway again.

If more sensors are waiting to be included, the Bridge will beep and flash rapidly. This again is your cue to press the include button on the gateway.

Repeat this process until all the sensors are included and the bridge has turned off the blue LED.

Note once this process is complete, on power up the bridge will no longer flash blue.

Reconnect the Ethernet cable to your gateway, wait a few minutes and log into your Z-wave online account. You will see a number of NEW SENSOR waiting to be configured. The number assigned to each sensor corresponds to the order in which you enrolled the Ecolink sensors into the Ecolink Bridge. If you recorded this information, you can edit the sensor information and re-label them with relevant names like front door, etc).

If you did not record that information, you must open each door or window sequentially to determine which one corresponds to which sensor in your Z-wave interface.

## FCC Compliance Statement

This equipment has been tested and found to comply with the limits for Class B digital devices, pursuant to Part 15 of the FCC Rules. This device complies with part 15 of the FCC Rules. Operation is subject to the following two conditions: (1) This device may not cause harmful interference, and (2) this device must accept any interference received, including interference that may cause undesired operation. These limits are designed to provide reasonable protection against harmful interference in a residential installation. This equipment generates uses and can radiate radio frequency energy and, if not installed and used in accordance with the instruction manual, may cause harmful interference to radio communications. However, there is no guarantee that interference will not occur in a particular installation. If this equipment does cause harmful interference to radio or television reception, which can be determined by turning the equipment off and on, the user is encouraged to try to correct the interference by one or more of the following measures:

- Re-orient or relocate the receiving antenna
- Increase the separation between the equipment and receiver
- Connect the equipment to an outlet on a different circuit from the receiver
- Consult the dealer or an experienced radio/TV contractor for help.

Warning: Changes or modifications not expressly approved by Ecolink Intelligent Technology Inc. could void the user's authority to operate the equipment.

This device complies with Industry Canada licence-exempt RSS standard(s). Operation is subject to the following two conditions: (1) this device may not cause interference, and (2) this device must accept any interference, including interference that may cause undesired operation of the device.

C'et appareil est conforme la norme d'Industrie Canada exempts de licence RSS. Son fonctionnement est soumis aux deux conditions suivantes: (1) c'et appareil ne peut pas provoquer d'interférences, et (2) c'et appareil doit accepter toute interférence, y compris les interférences qui peuvent causer un mauvais fonctionnement de la dispositif.

**FCC ID: XQC-1042R01 IC: 9863B-1042R01**

## Warranty

Ecolink Intelligent Technology Inc. warrants that for a period of 5 years from the date of purchase that this product is free from defects in material and workmanship. This warranty does not apply to damage caused by shipping or handling, or damage caused by accident, abuse, misuse, misapplication, ordinary wear, improper maintenance, failure to follow instructions or as a result of any unauthorized modifications. If there is a defect in materials and workmanship under normal use within the warranty period Ecolink Intelligent Technology Inc. shall, at its option, repair or replace the defective equipment upon return of the equipment to the original point of purchase.

The foregoing warranty shall apply only to the original buyer, and is and shall be in lieu of any and all other warranties, whether expressed or implied and of all other obligations or liabilities on the part of Ecolink Intelligent Technology Inc. neither assumes responsibility for, nor authorizes any other person purporting to act on its behalf to modify or to change this warranty, nor to assume for it any other warranty or liability concerning this product. The maximum liability for Ecolink Intelligent Technology Inc. under all circumstances for any warranty issue shall be limited to a replacement of the defective product. It is recommended that the customer check their equipment on a regular basis for proper operation.

2055 Corte Del Nogal  
Carlsbad, California 92011  
1-855-632-6546  
[www.discoverecolink.com](http://www.discoverecolink.com)