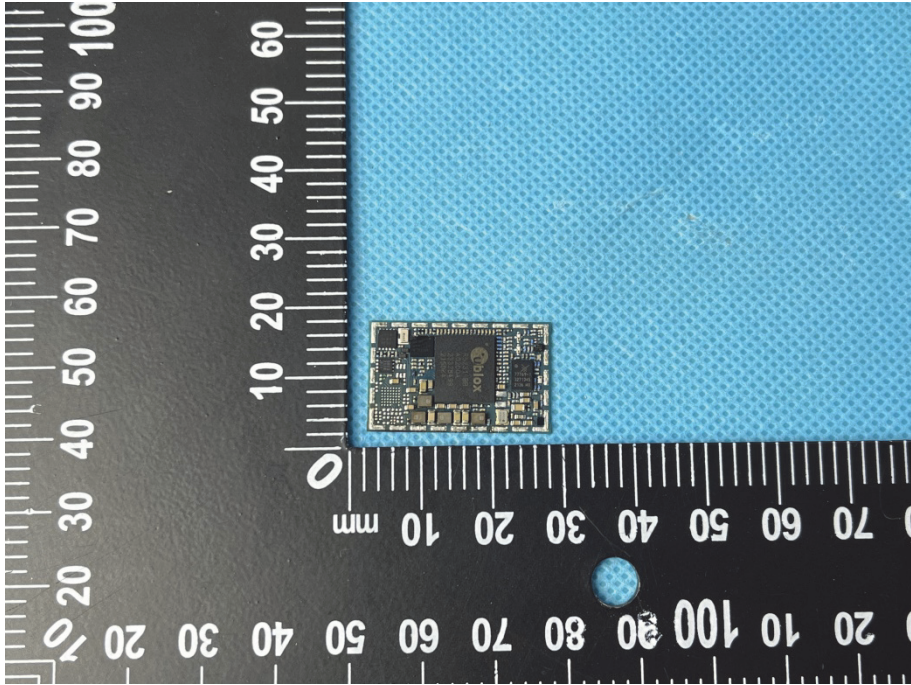
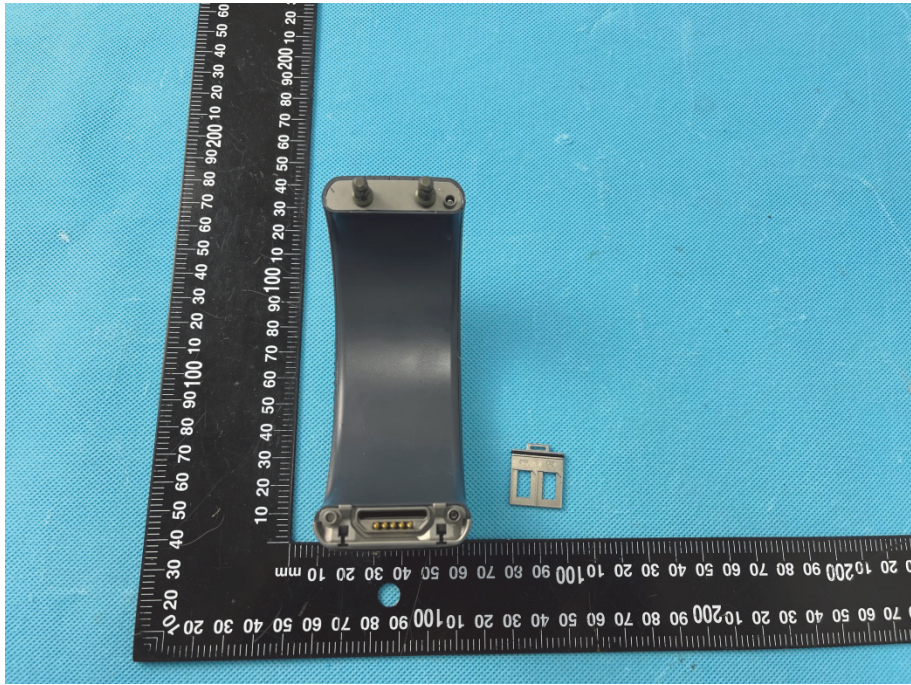
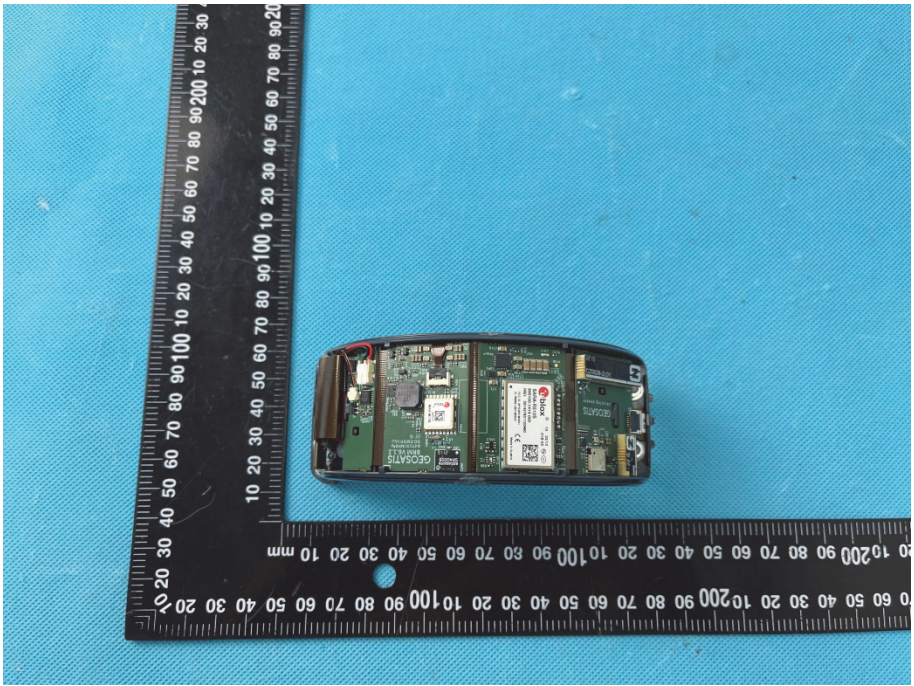
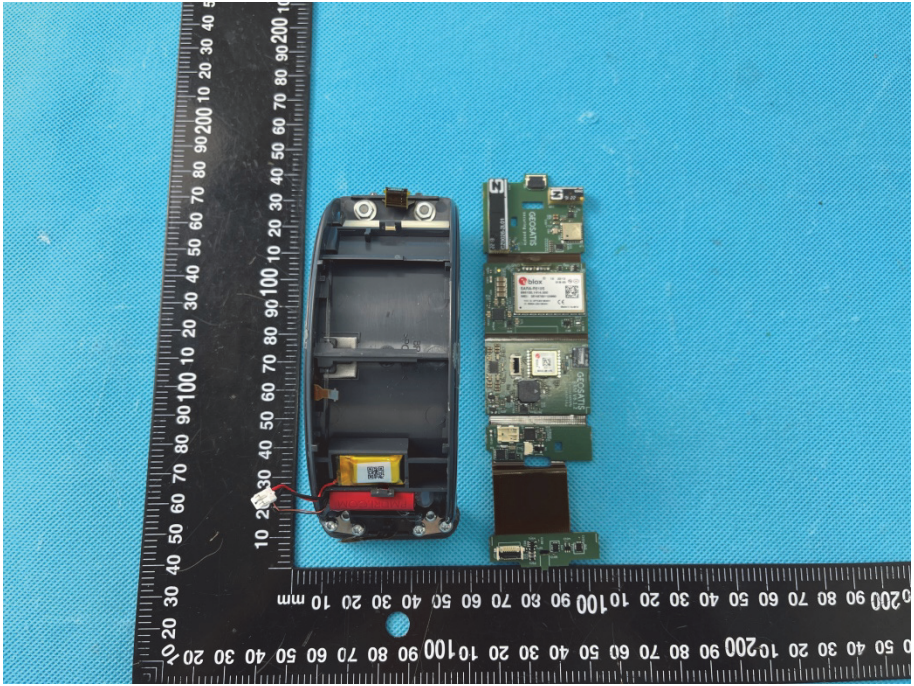
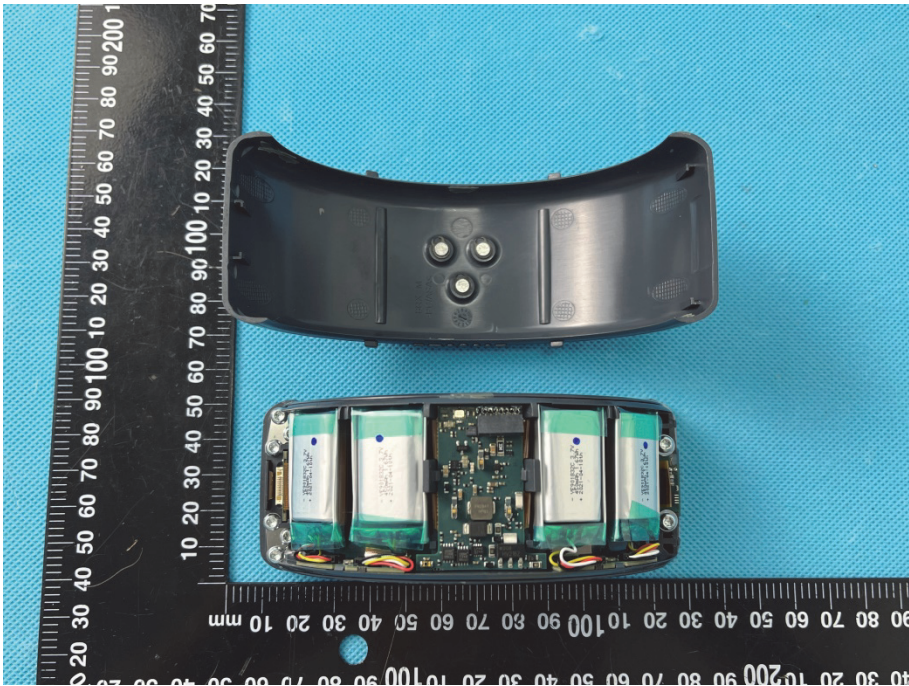
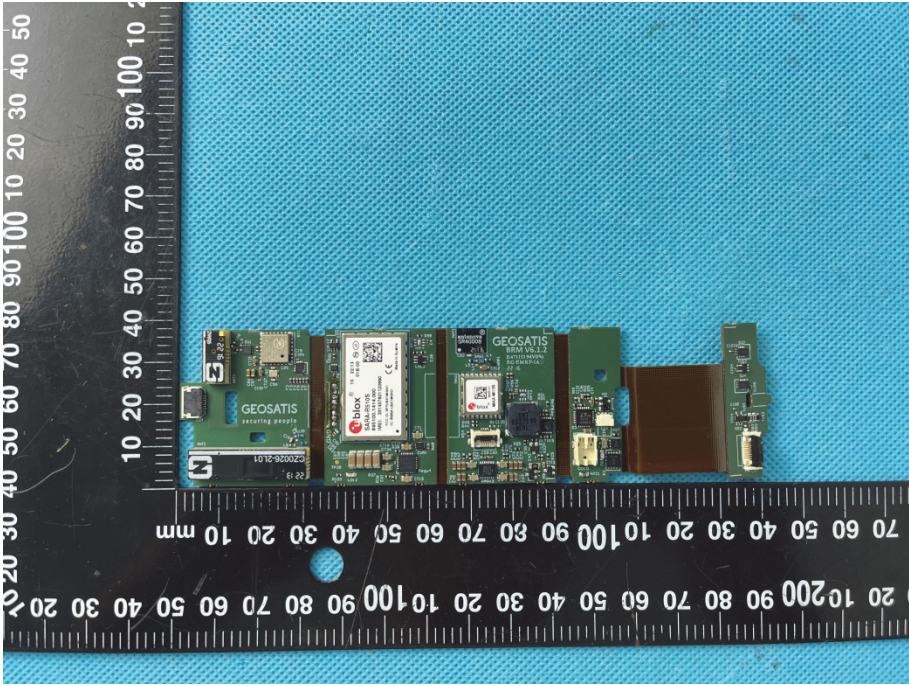


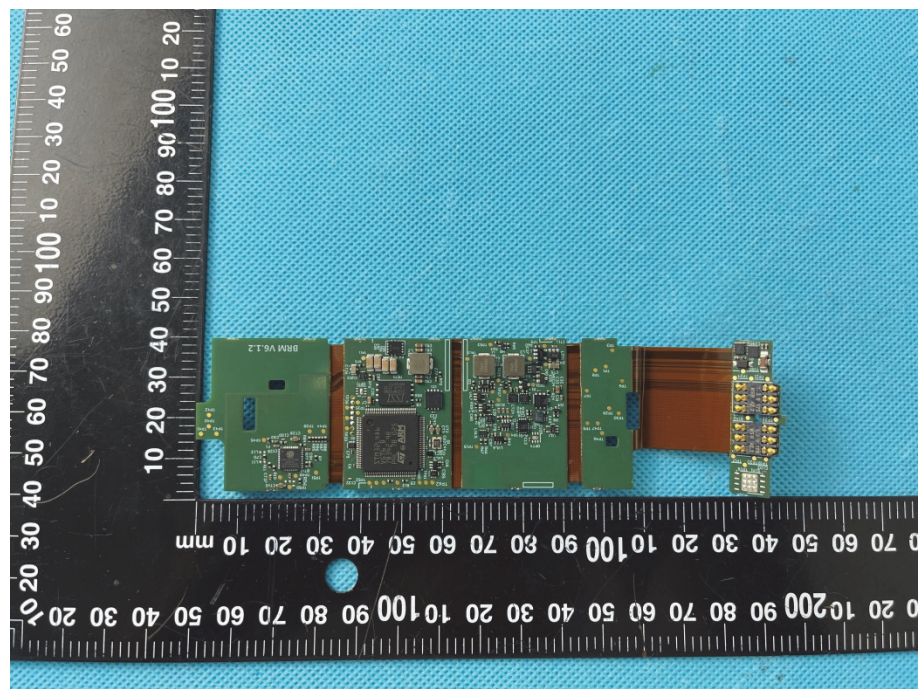
EXHIBIT 3 - EUT INTERNAL PHOTOGRAPHS

<p>Solder Board-Component View</p>	 A photograph showing a small, rectangular printed circuit board (PCB) component, likely a solder board, placed on a blue textured surface. The component is positioned next to a black ruler with white markings in millimeters. The ruler shows the component is approximately 25 mm wide and 15 mm high. The component has a gold-colored surface and various electronic components, including a central chip with the 'Xilinx' logo.
<p>Host Housing and Board View 1</p>	 A photograph showing a host housing and a board component. The host housing is a dark, rectangular plastic component with a gold-colored connector at the bottom. It is placed on a blue textured surface next to a black ruler with white markings in millimeters. The ruler shows the housing is approximately 100 mm long and 25 mm wide. A small, rectangular PCB component is also visible next to the housing.

<p>Host Housing and Board View 2</p>	 <p>A photograph showing the host housing and board assembly. The assembly is placed on a blue textured surface next to a black L-shaped ruler for scale. The ruler has markings in millimeters (0 to 100) and centimeters (0 to 10). The assembly consists of a black plastic housing and a green printed circuit board (PCB) populated with various electronic components, including a SIM card, a battery, and various integrated circuits. The text 'GEO-SATIS' is visible on the PCB.</p>
<p>Host Housing and Board View 3</p>	 <p>A photograph showing the host housing and board assembly from a different perspective. The assembly is placed on a blue textured surface next to a black L-shaped ruler for scale. The ruler has markings in millimeters (0 to 100) and centimeters (0 to 10). The assembly consists of a black plastic housing and a green printed circuit board (PCB) populated with various electronic components, including a SIM card, a battery, and various integrated circuits. The text 'GEO-SATIS' is visible on the PCB.</p>

<p>Host Housing and Board View 4</p>	 <p>A photograph showing the host housing and board assembly. The housing is black and curved, with two circular buttons on the front. The board is green and populated with four green batteries. A black ruler is placed vertically to the left of the assembly for scale, with markings in millimeters and centimeters.</p>
<p>Host Solder Board-Component View 1</p>	 <p>A photograph showing the host solder board component. The board is green and populated with various components, including a SIM card, a microcontroller, and a connector. A black ruler is placed vertically to the left of the board for scale, with markings in millimeters and centimeters.</p>

Host Solder
Board-Component View
2



Host Solder
Board-Component View
3

