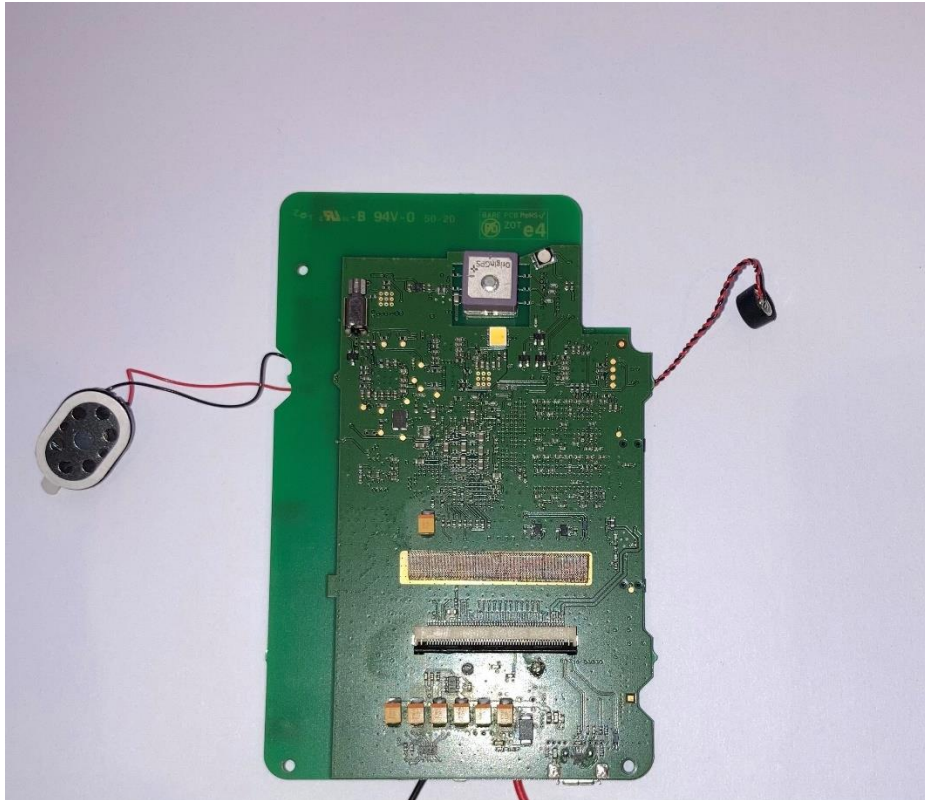


Main PCB rear side



Front side Main PCB with EMC shield cans Removed



Front side Main PCB with EMC shield cans Fitted, installed in housing



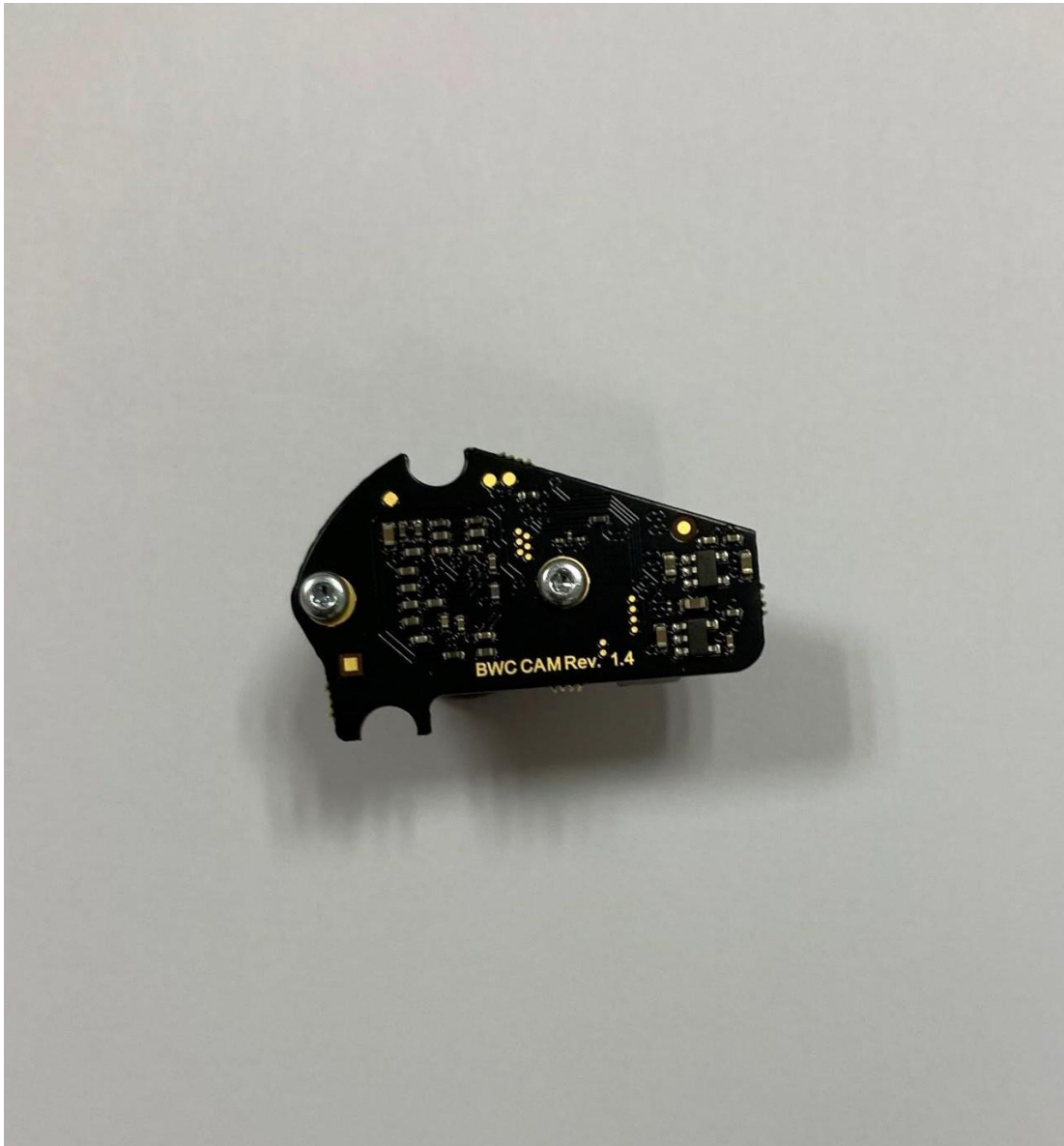
Front Screen installed in housing.



Camera module installed on to Main PCB



Camera Module Rear



Camera module front

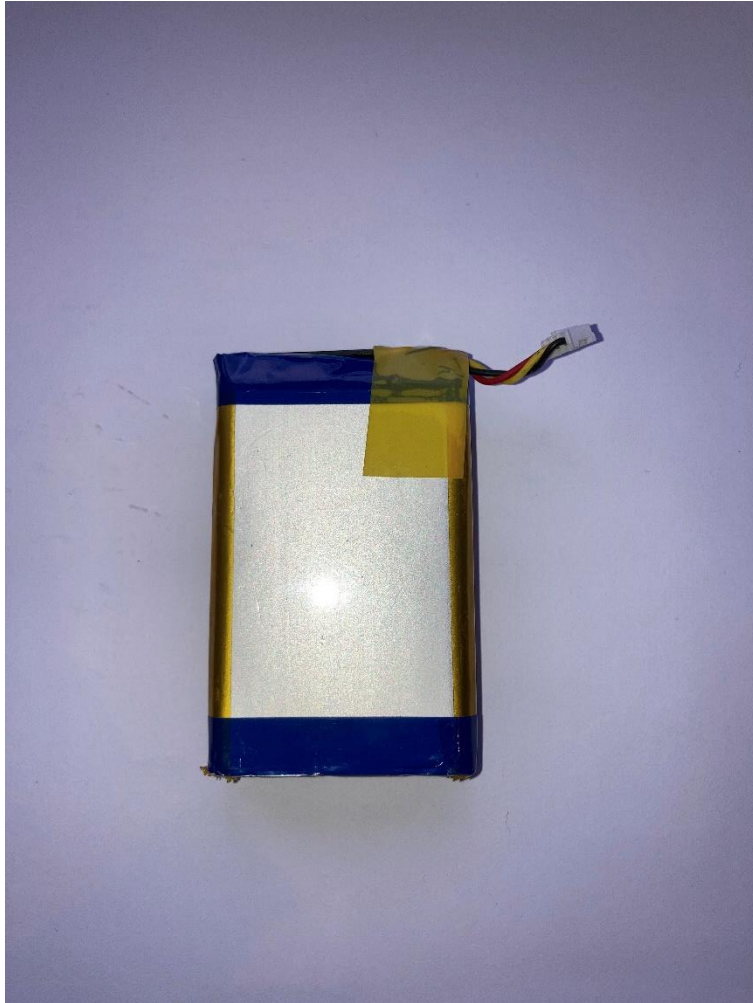


Rear Housing attached to charging wires to Main PCB





Internal Battery Rear



Internal Battery Front



## Internal Battery Placed in Housing



Housing assembled front



Housing assembled button control side



Housing assembled rear



Housing assembled Top view



Housing assembled Bottom

