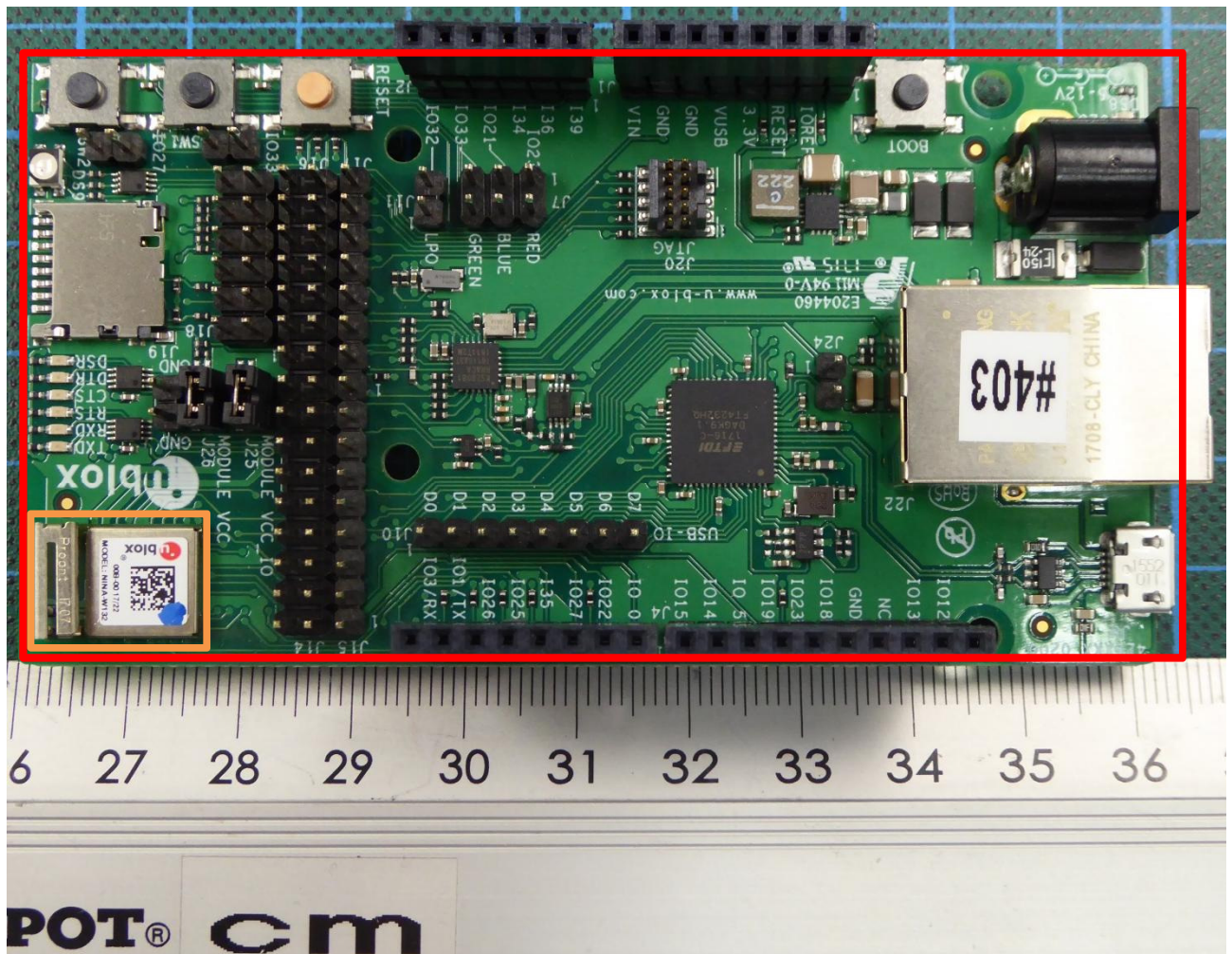
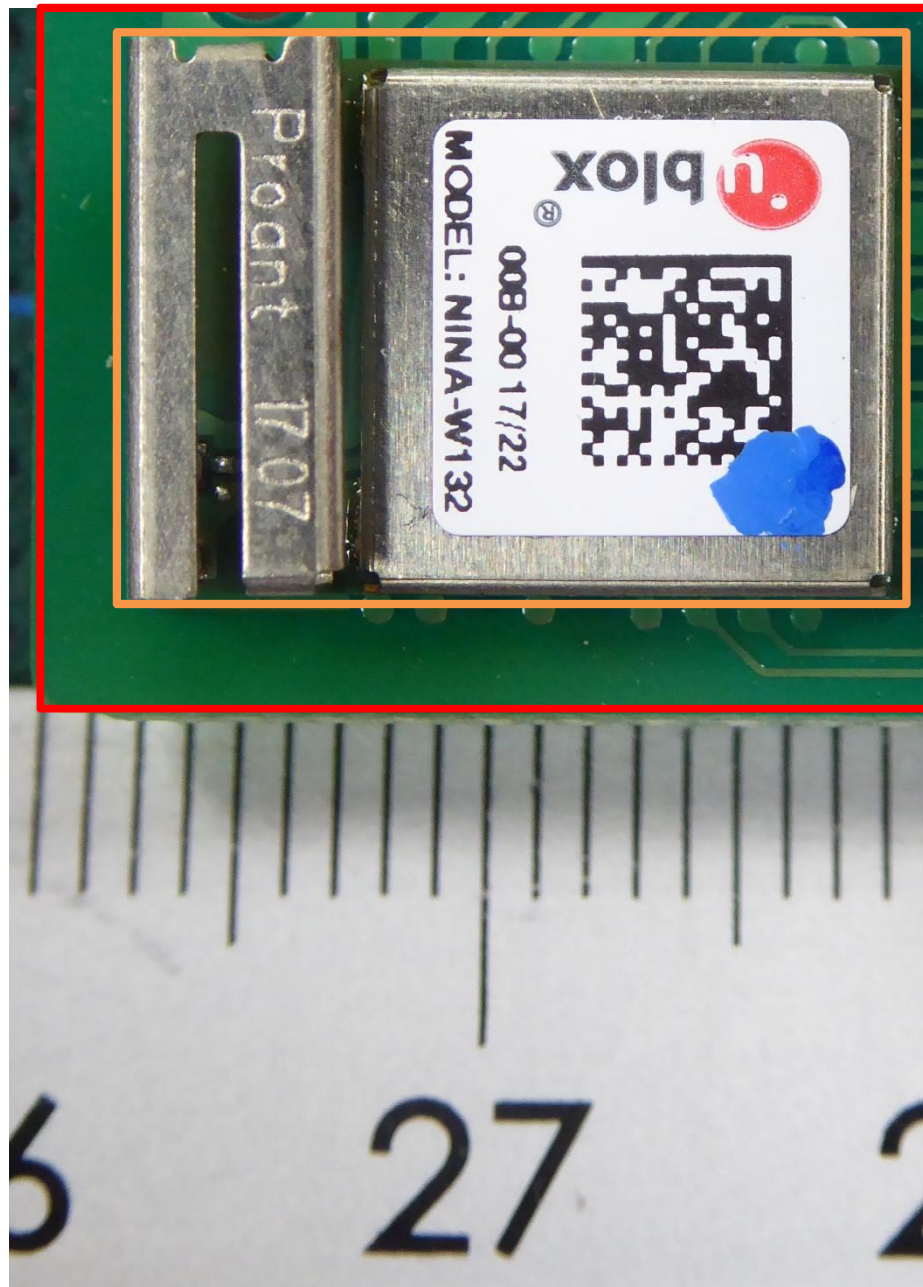


**ANNEX B: EXTERNAL PHOTOGRAPHS**



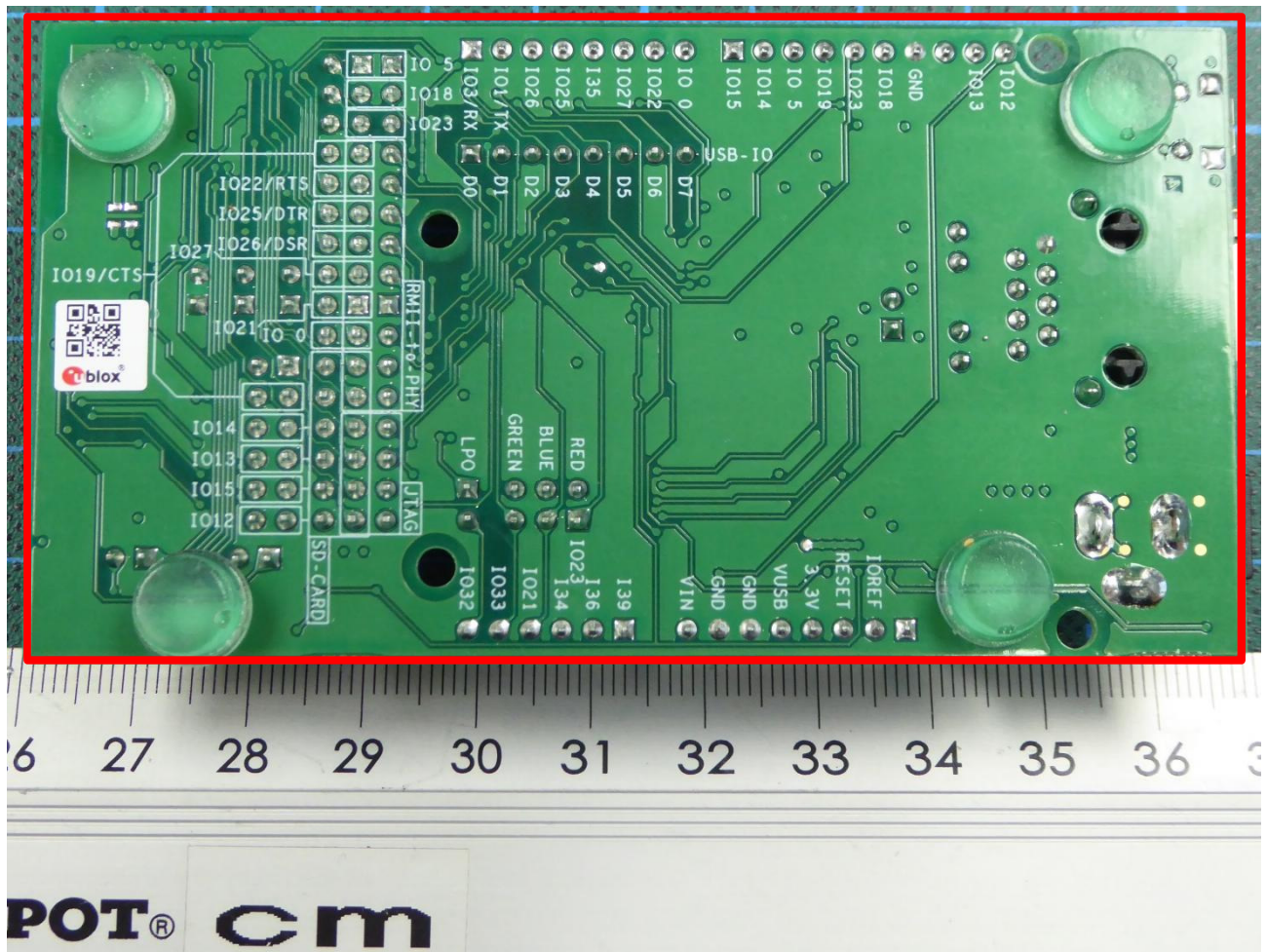
170297\_E8\_13.jpg: EUT #403 (int ant) on not marketed eval board – top view

**ANNEX B: EXTERNAL PHOTOGRAPHS**



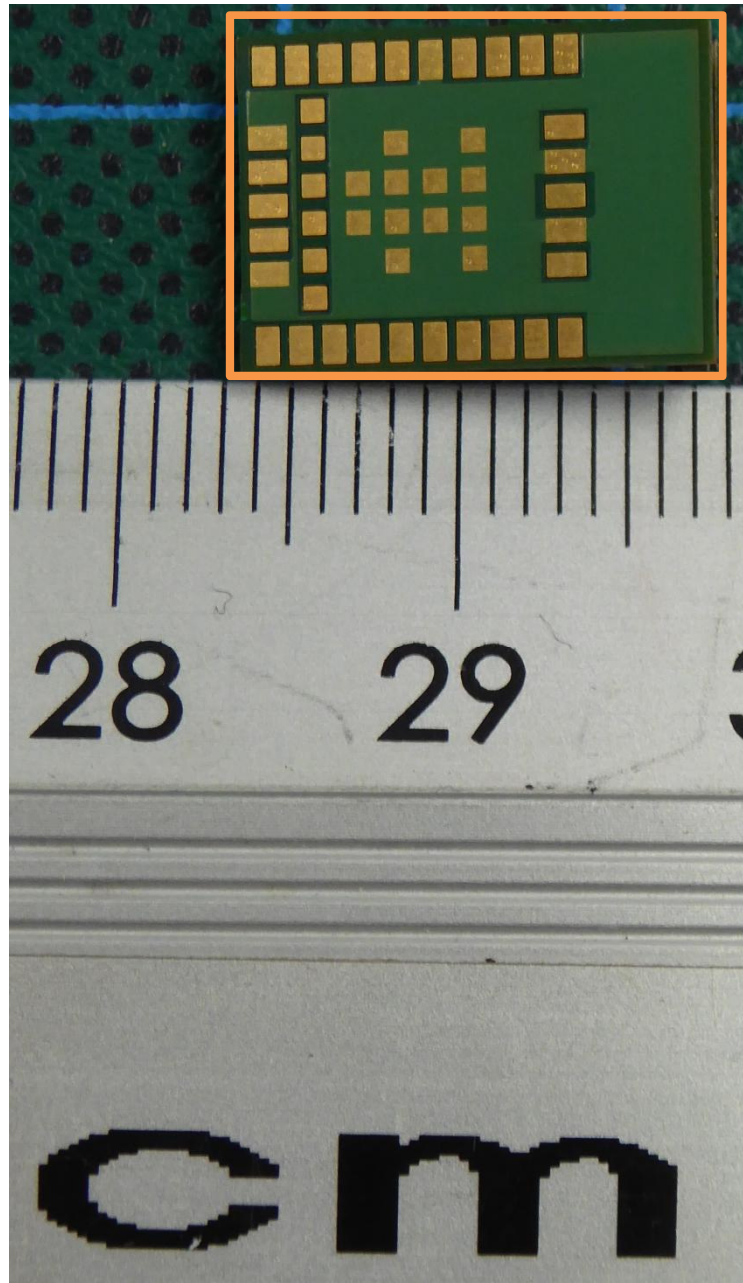
170297\_E8\_14.jpg: EUT #403 (onboard antenna) on not marketed eval board  
– close-up

**ANNEX B: EXTERNAL PHOTOGRAPHS**



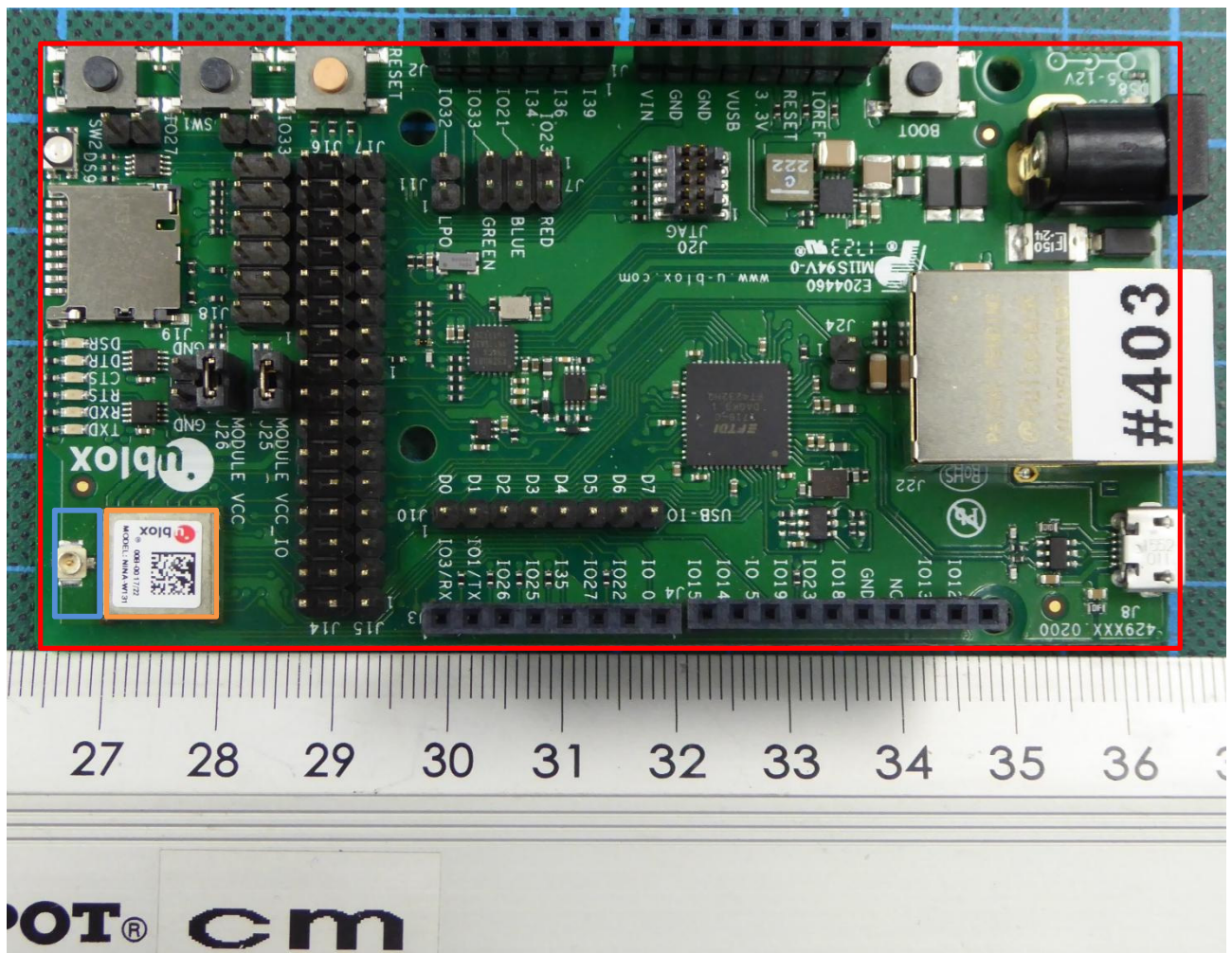
170297\_E8\_15.jpg: EUT #403 (onboard antenna) on not marketed eval board  
– bottom view

**ANNEX B: EXTERNAL PHOTOGRAPHS**



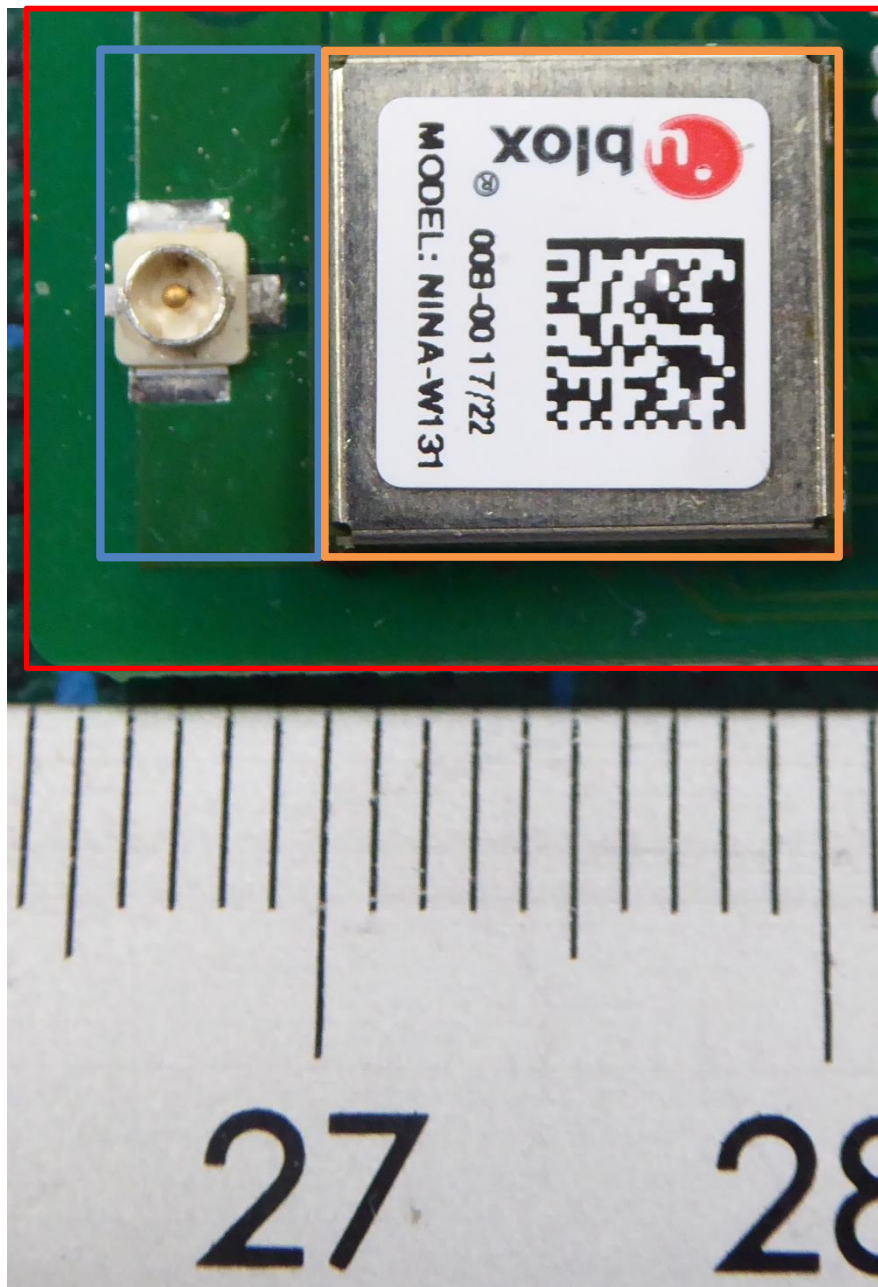
170297\_E8\_23.jpg: EUT (onboard antenna)  
- bottom side

**ANNEX B: EXTERNAL PHOTOGRAPHS**



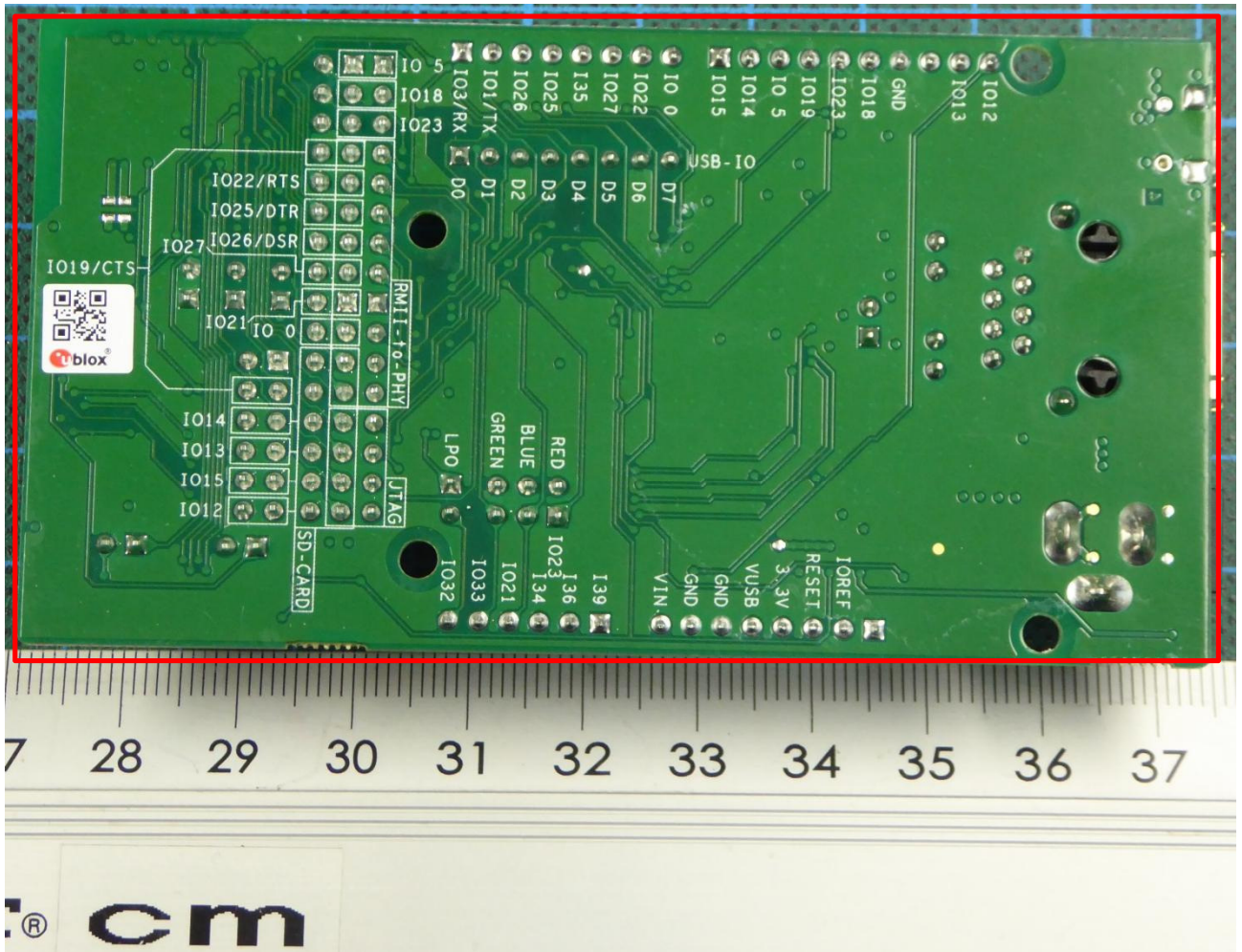
170297\_E8\_10.jpg: EUT #403 with antenna trace design on not marketed eval board – top view

**ANNEX B: EXTERNAL PHOTOGRAPHS**



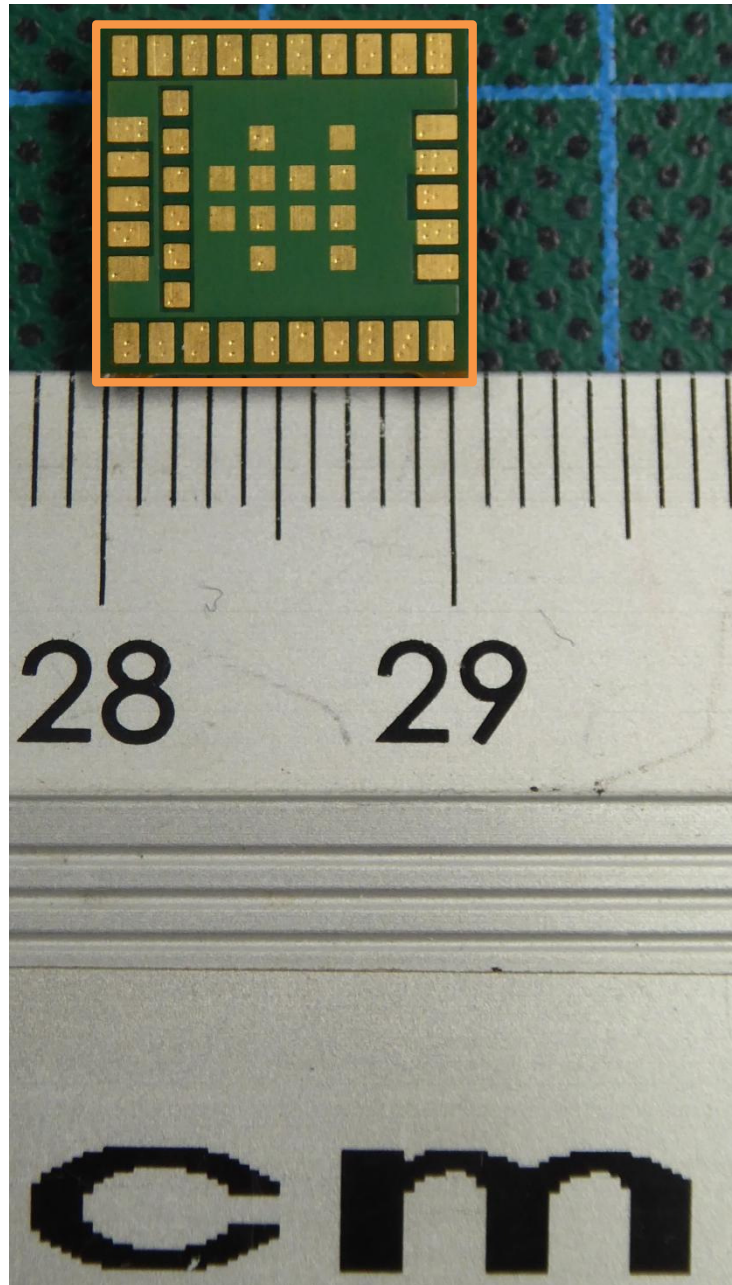
170297\_E8\_11.jpg: EUT #403 with antenna trace design on not marketed eval board  
– close-up

**ANNEX B: EXTERNAL PHOTOGRAPHS**



170297\_E8\_12.jpg: EUT #403 with antenna trace design on not marketed eval board – bottom view

## ANNEX B: EXTERNAL PHOTOGRAPHS



170297\_E8\_22.jpg: EUT #403  
– bottom view