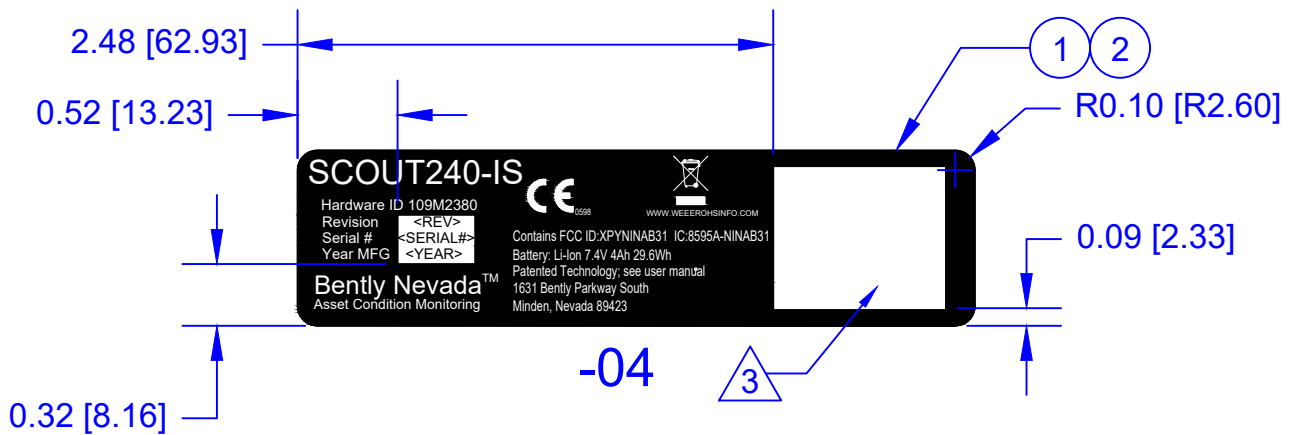
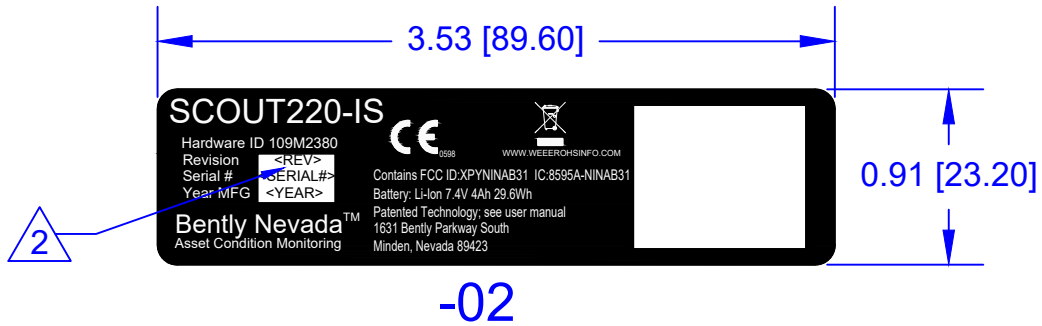


REVISION			
ZONE	REV	DESCRIPTION	APPROVED
	D	INC ECM 50000457830	R. TRIPATHI




4. PART MUST BE REACH AND ROHS COMPLIANT TO THE CURRENT INITIATIVES

3. RIGHT WINDOW: CLEAR WINDOW, NO ADHESIVE,
HEIGHT: 18.6mm
WIDTH: 22.5mm

2. LEFT WINDOW: CLEAR WINDOW, NO ADHESIVE
HEIGHT: 6.5mm
WIDTH: 10.3mm
REV, SERIAL#, AND YEAR ARE FOR REFERENCE ONLY.

1. PART NUMBER IS 119M7432 AND APPLICABLE DASH OPTION

NO CHANGES TO THIS DRAWING WITHOUT APPROVAL OF THE APPROVAL AGENCIES

UNCONTROLLED WHEN PRINTED OR TRANSMITTED ELECTRONICALLY.			
CLASS II (INTERNAL) Copyright 2022 Baker Hughes Company (unpublished work). All rights reserved. The information contained in this document is company confidential and proprietary property of Baker Hughes and its affiliates. It is to be used only for the benefit of Baker Hughes and may not be distributed, transmitted, reproduced, altered, or used for any purpose without the express written consent of Baker Hughes.			
UNLESS OTHERWISE SPECIFIED DIMENSIONS ARE IN INCHES [MM]. FINISHED MACHINED SURFACES ± 0.005 ✓		<h2>CD APVL LABEL PRODUCT</h2> <h2>SCOUT200 SERIES</h2>	
NAME	D. ECKERY	SIZE	A
APPROVED	D. ECKERY	CAGE CODE	3WAP1
		NUMBER	119M7432
UNLESS OTHERWISE SPECIFIED NOTES:		PLOT SCALE 1:1	SHEET 1 OF 1