

MAYA-W2 photos

Topic :	MAYA-W2 photos		
Doc.No:	UBXDOC-885269510-81389		
Revision	R01		
	Date:	Name	Signature
Created	12-Dec-2023	Lucian Farmathy-Pop	lfar
Checked			
Released		Lucian Farmathy-Pop	lfar

We reserve all rights in this document and in the information contained therein. Reproduction, use or disclosure to third parties without express authority is strictly forbidden. © 20168 u-blox AG

1 Scope

This document provides internal and external photos of the MAYA-W2 family modules. It is part of the equipment certification application issued to FCC and ISED. The photos have been taken with the RF shield mounted and removed.

2 FCC/IC ID reference

Ordering Code(s)	FCC ID	ISED ID
MAYA-W276-00B	XPYMAYAW2B	8595A-MAYAW2B
MAYA-W266-00B	XPYMAYAW2B	8595A-MAYAW2B

Table 1: FCC and IC IDs for different models of MAYA-W2 series

3 Top view

3.1 Internal photos

PCB Trace Antenna

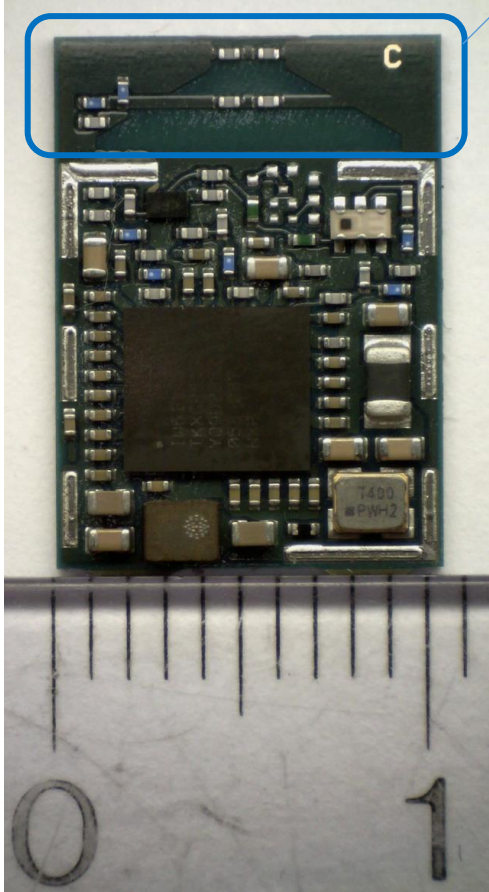


Figure 4: MAYA-W276-00B top view internal photo (width)

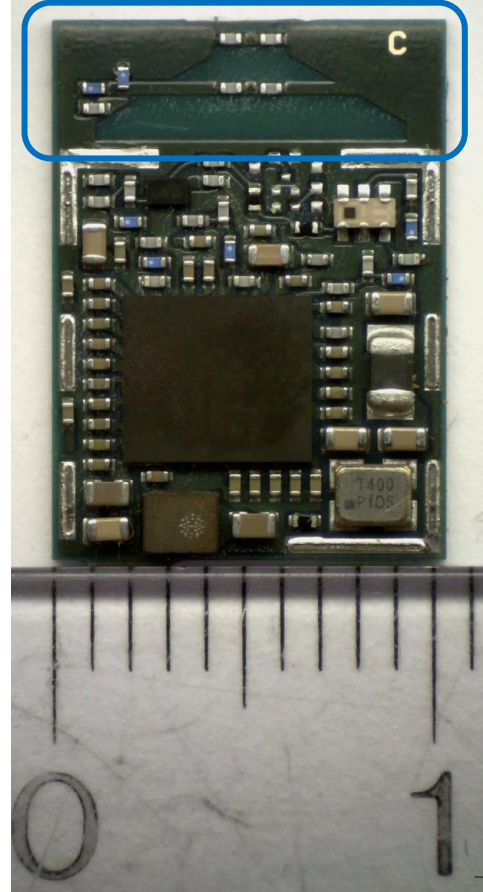
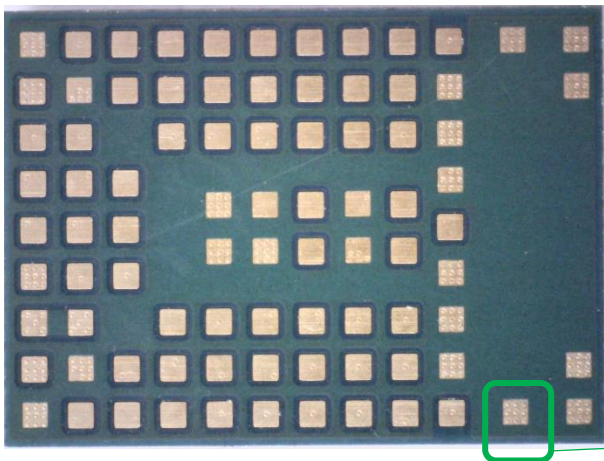


Figure 5: MAYA-W266-00B top view internal photo (width)

4 Bottom view



Antenna Pin

Figure 7: Bottom view of MAYA-W276-00B and MAYA-W266-00B

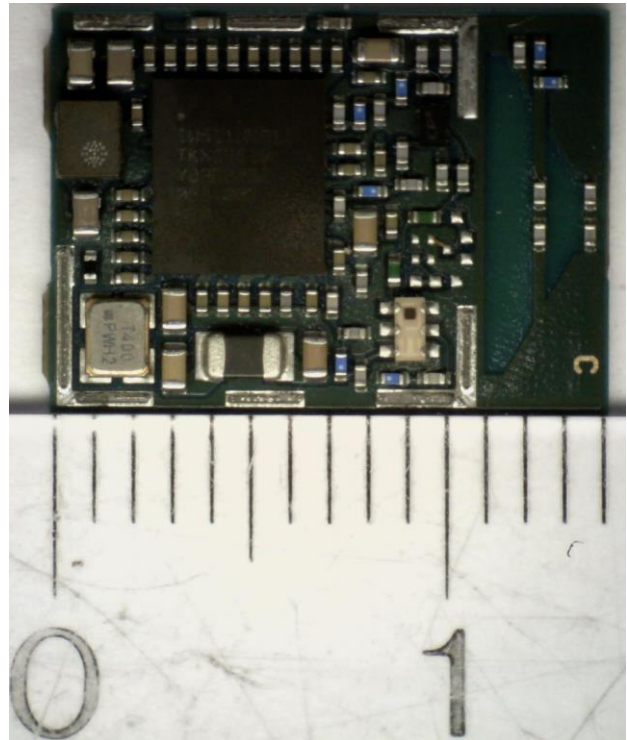
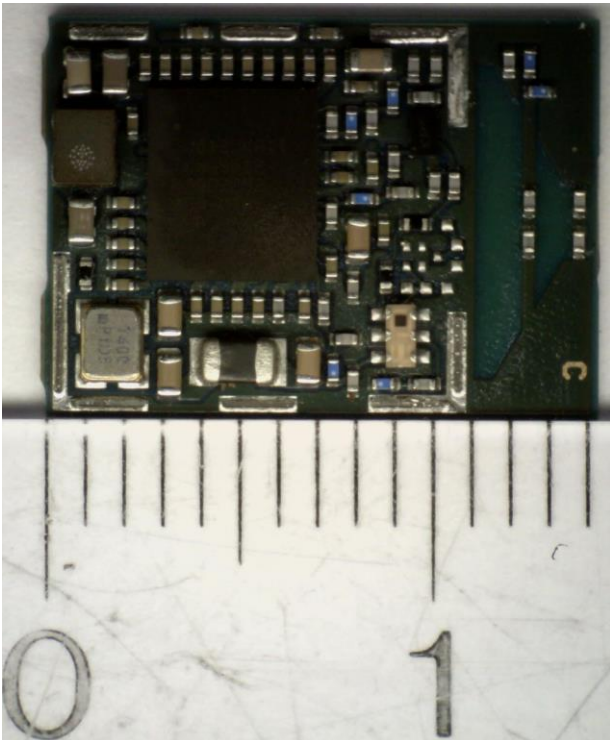


Figure 8: MAYA-W276-00B length 14.3mm (internal photo) Figure 9: MAYA-W266-00B length 14.3mm (internal photo)



Figure 10: Antenna length _ photo to show the antenna connector.