

# M.2 card JODY-W2 photos

|                 |                                |                 |           |
|-----------------|--------------------------------|-----------------|-----------|
| <b>Topic :</b>  | <b>M.2 card JODY-W2 photos</b> |                 |           |
| <b>Doc.No:</b>  | UBXDOC-885269510-32747         |                 |           |
| <b>Revision</b> | R01                            |                 |           |
|                 | Date:                          | Name            | Signature |
| <b>Created</b>  | 12-Oct-2022                    | Franck Campagna | frca      |
| <b>Checked</b>  |                                |                 |           |
| <b>Released</b> | 12-Oct-2022                    | Franck Campagna | frca      |

We reserve all rights in this document and in the information contained therein. Reproduction, use or disclosure to third parties without express authority is strictly forbidden. © 20168 u-blox AG

## 1 Scope

This document provides internal and external photos of the M.2 card JODY-W2, using the JODY-W263-00B module. It is part of the equipment certification application issued to FCC and ISED. Photos of the M.2 card have been taken, displaying also the modules itself with the RF shield mounted and removed.

## 2 FCC/IC ID reference

| Ordering Code(s) | FCC ID      | ISED ID        |
|------------------|-------------|----------------|
| JODY-W263-01A    | XPYJODYW263 | 8595A-JODYW263 |
| JODY-W263-00A    |             |                |
| JODY-W263-00B    |             |                |
| M2-JODY-W263     |             |                |

Table 1: FCC and IC IDs for different models of JODY-W2 series

### 3 Top view

#### 3.1 M2 Card External photos

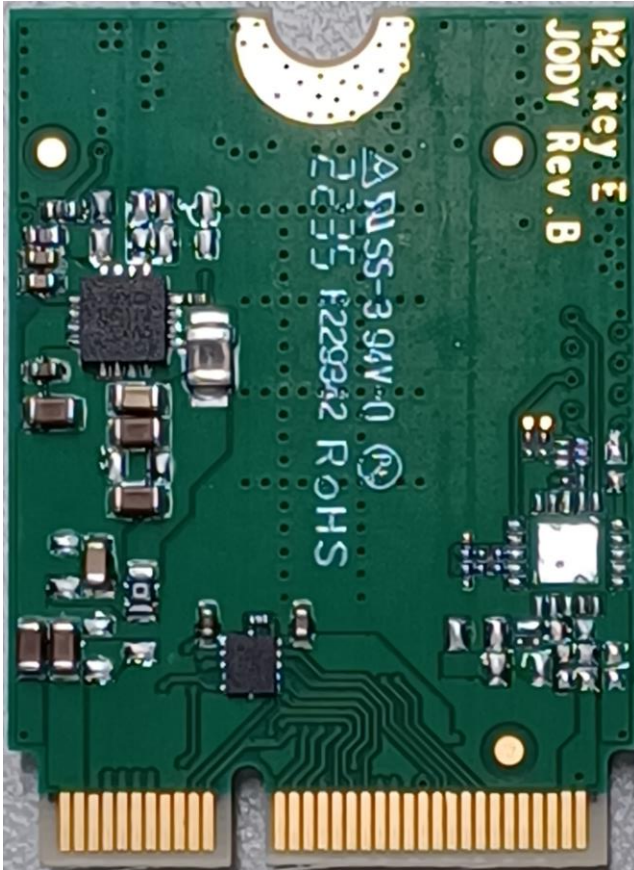


Figure 1: M2-JODY-W263 bottom view external photo



Figure 2: M2-JODY-W263 top view external photo

### 3.2 Module Internal photos

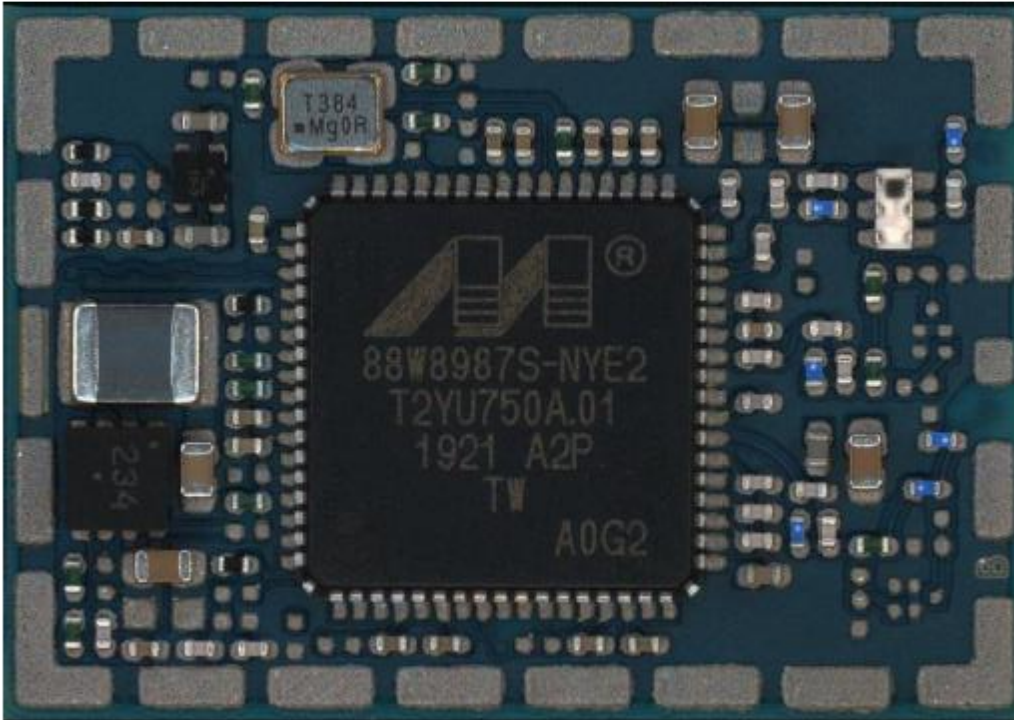


Figure 2: JODY-W263-00B module internal photo