

JODY-W1

Topic JODY-W1 Internal Photos
UBX-21022870
Author Michael Hein
Date 4 June 2021
To Certification application reviewer

Copying, reproduction, modification or disclosure to third parties of this document or any part thereof is only permitted with the express written permission of u-blox. The information contained herein is provided "as is" and u-blox assumes no liability for its use. No warranty, either express or implied, is given, including but not limited, with respect to the accuracy, correctness, reliability and fitness for a particular purpose of the information. This document may be revised by u-blox at any time. For most recent documents, visit www.u-blox.com.
Copyright© u-blox AG.

1 Scope

This document provides the internal photos of the JODY-W161 modules with use a crystal as reference clock generator. It is part of the equipment certification application issued to FCC and ISED.

2 FCC/ISED ID reference

Ordering code	FCC ID	IC ID
JODY-W164-03A		
JODY-W164-13A	XPYJODYW164	8595A-JODYW164
JODY-W163-13A		
JODY-W164-27A		
JODY-W164-15A	XPYJODYW164-07A	8595A-JODYW16407A
JODY-W163-04A		
JODY-W167-03A		
JODY-W167-00A	XPYJODYW167	8595A-JODYW167
JODY-W167-00B		

Table 1: FCC and ISED IDs for different models of JODY-W167 series modules

3 Top view

3.1 Internal photos



Figure 1: JODY-W164-03A internal photo

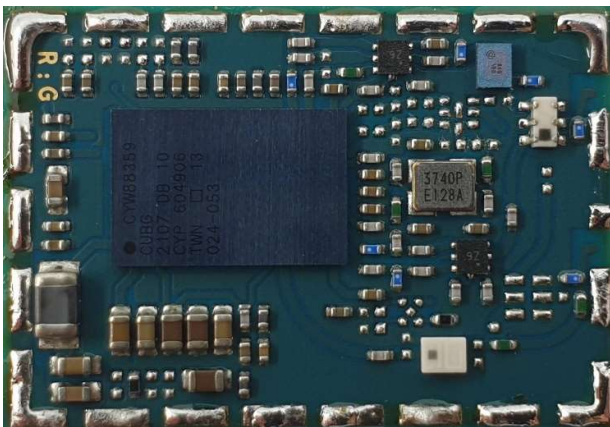


Figure 2: JODY.W164-27A internal photo

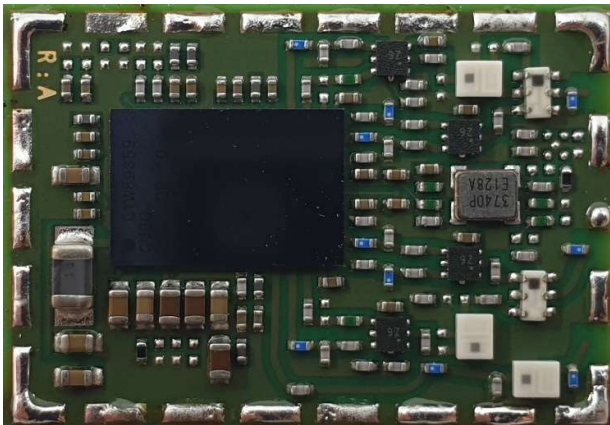


Figure 3: JODY-W167-03A internal photo

3.2 External photos

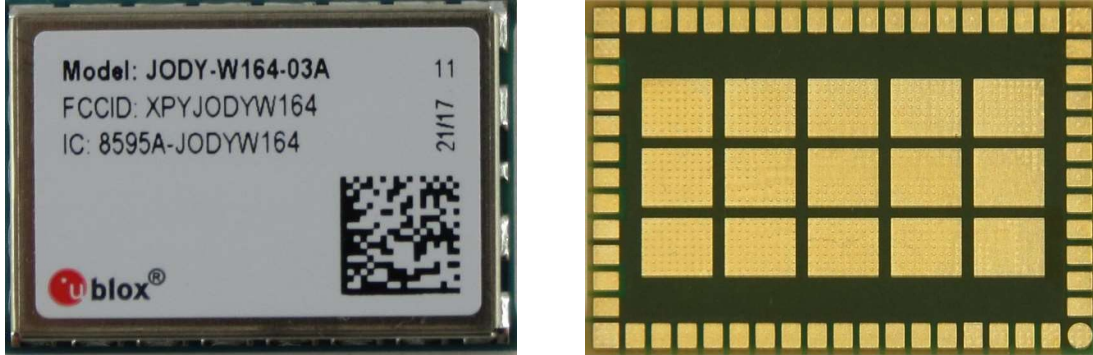


Figure 4: JODY-W164-03A top and bottom view external photo

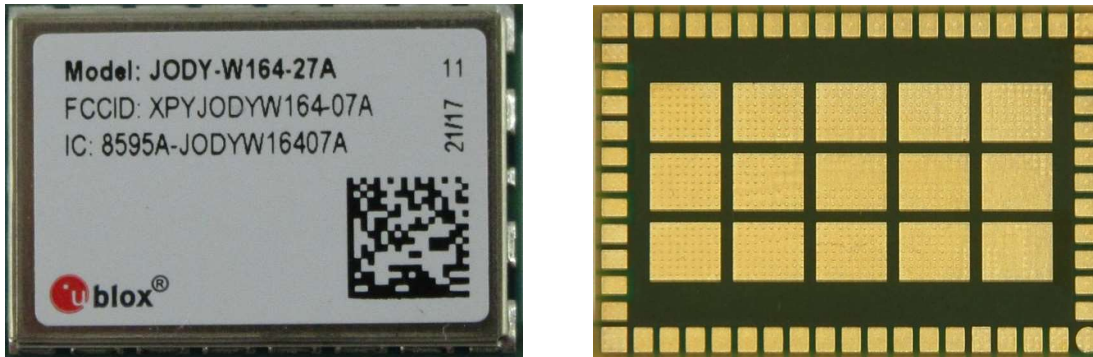


Figure 5: JODY-W164-27A top and bottom view external photo



Figure 6: JODY-W167-03A top and bottom view external photo