

EMMY-W1 Photos

Topic :	EMMY-W1 Photos		
Doc.No:	UBX-16016052		
Revision	R02		
	Date:	Name	Signature
Created	18-Jul-2016	Daniel Dietterle	ddie
Checked			
Released			

We reserve all rights in this document and in the information contained therein. Reproduction, use or disclosure to third parties without express authority is strictly forbidden.

© 2016 u-blox AG

1 Scope

This document provides internal and external photos of the EMMY-W1 series modules. It is part of the equipment certification application issued to FCC and IC. The photos have been taken with the RF shield removed.

2 FCC/IC ID reference

Model	FCC ID	IC ID
EMMY-W161	XPYEMMYW161	8595A-EMMYW161
EMMY-W163	XPYEMMYW163	8595A-EMMYW163

Table 1: FCC and IC IDs for different models of EMMY-W1 series

3 Top view

3.1 Internal photos

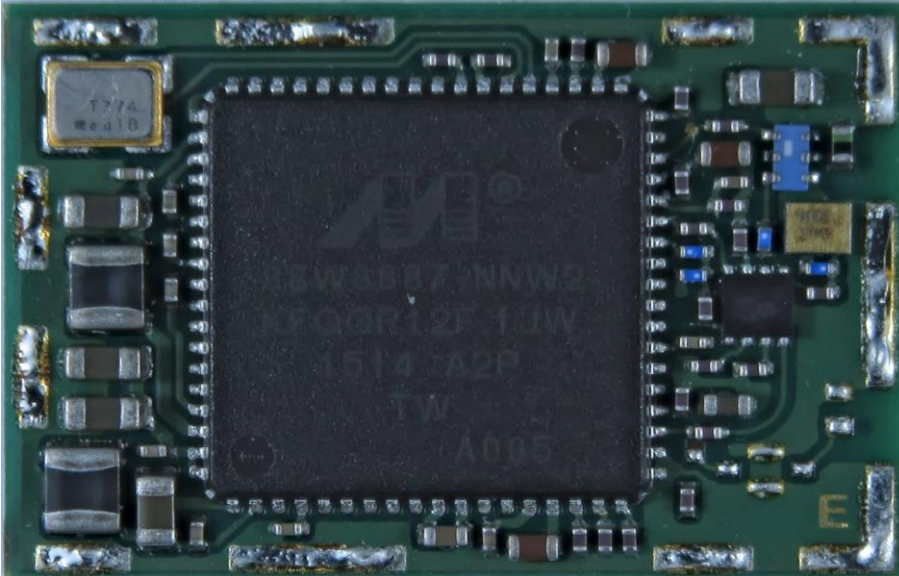


Figure 1: EMMY-W161 top view internal photo

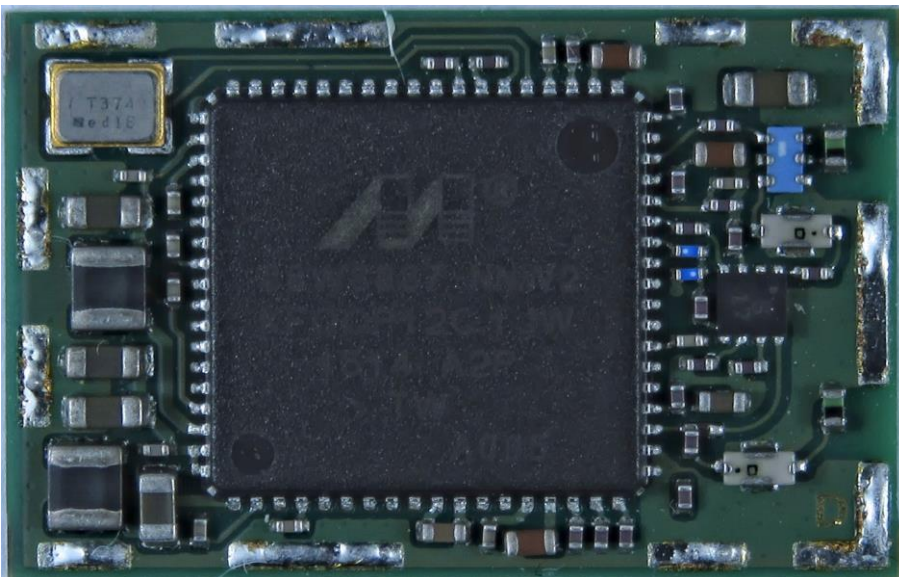


Figure 2: EMMY-W163 top view internal photo

3.2 External photos



Figure 3: EMMY-W161 top view internal photo



Figure 4: EMMY-W163 top view internal photo

4 Bottom view

The bottom view for both models, EMMY-W161 and EMMY-W163, is identical.

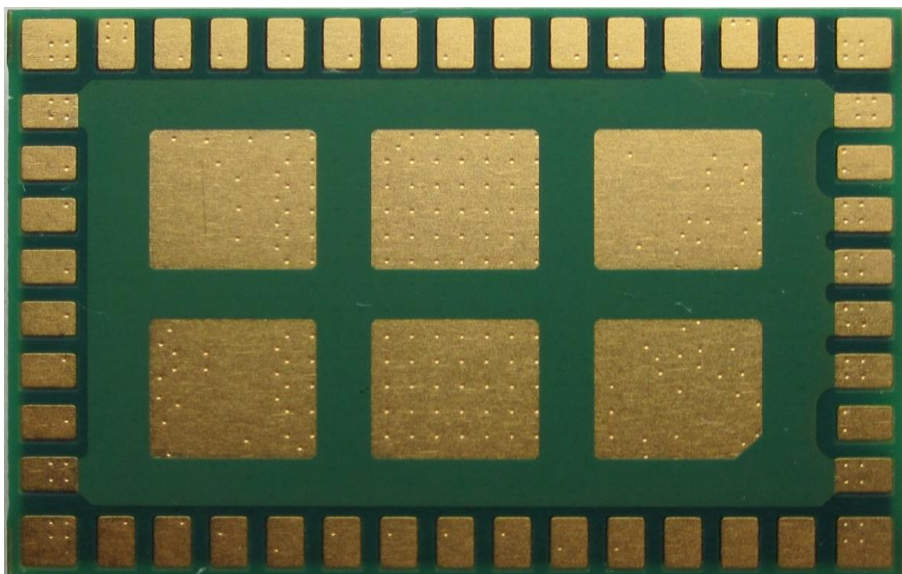


Figure 5: EMMY-W161 and EMMY-W163 bottom view