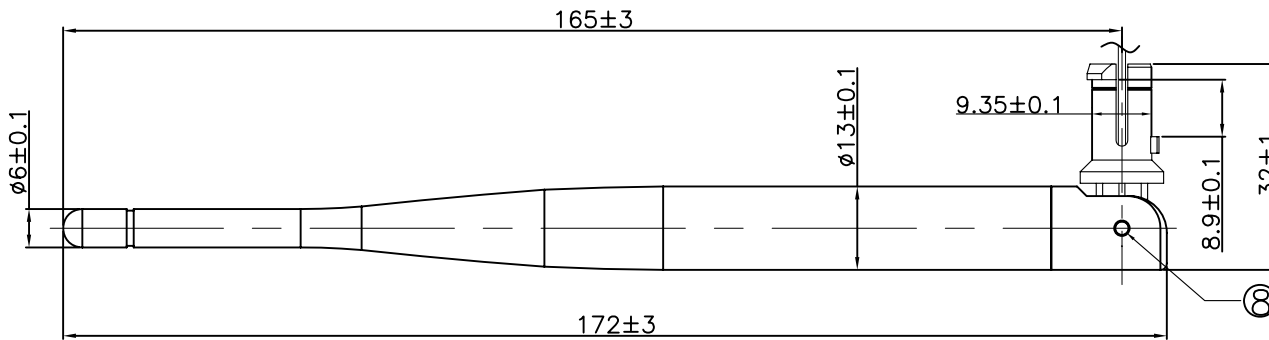
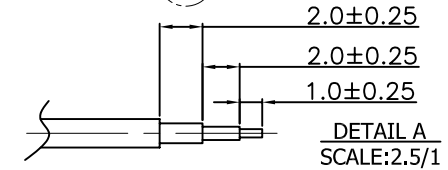
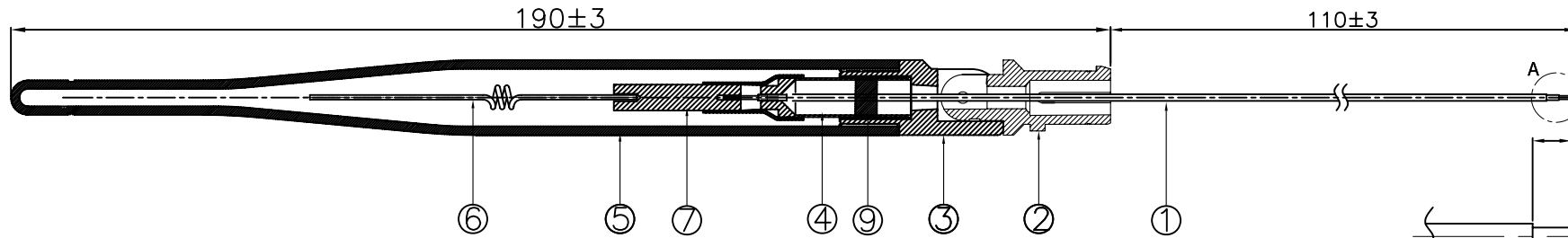


| Main technical specifications | |
|---|-----------------------------------|
| Frequency Range (MHZ) | 5150-5825 |
| center frequency Impedance(Ω) | 50 \pm 10 |
| Gain(dBi) | 5 \pm 0.5 |
| VSWR | \leq 1.92 |
| Admitted Power | 1W |
| Polarization | Linear, Vertical |
| Radiation | Omni-directional |
| Connector Type | cable |
| Physical Properties | |
| Antenna Base | PE |
| Operating Temp | -20 $^{\circ}$ C~+60 $^{\circ}$ C |
| Storage Temp | -20 $^{\circ}$ C~+70 $^{\circ}$ C |

| REV | DATE | DESCRIPTION |
|-----|------------|-------------|
| A | 2014-08-21 | NEW ISSUE |



DETAIL B
SCALE: 4/1

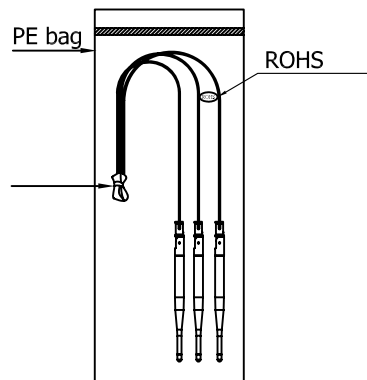
Specification:

Frequency Range : 5.15~5.825GHz

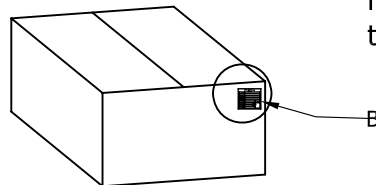
VSWR: 1.92:1 max

Gain(Peak): 5dBi

Product tensile strength: fixed seat and plastic rod for 7 kg, coaxial and copper tube for 3 kg.



Packing: 20pcs/bag



| 9 | 1 | EVA: Black | |
|----|-------------|---------------------------|--------|
| 8 | 2 | POM: White | |
| 7 | 2 | Brass | |
| 6 | 1 | Brass | |
| 5 | 1 | PE: White | |
| 4 | 1 | Barss+Pom | |
| 3 | 1 | PC; White | |
| 2 | 1 | PC; White | |
| 1 | 1 | ∅1.13 Black; silver & Tin | |
| NO | DESCRIPTION | Q'TY | REMARK |

| | | | |
|-----|------|----------|-------|
| XXX | ±5.0 | APPROVED | Andy |
| XX | ±3.0 | CHECKED | Louis |
| X | ±1.0 | DRAWING | DU |
| .X | ±0.5 | | |
| .XX | ±0.1 | | |

| COSTOMER: | | | | |
|--------------------------------|------|-------|------|-------|
| PART NO : | | | | |
| PARTNAME : RF Antenna Assembly | | | | |
| R,F P/NO : RF21C00664A | | | | |
| REV | UNIT | SCALE | SIZE | SHEET |
| A | mm | 1:1 | A4 | 10F1 |

RF link