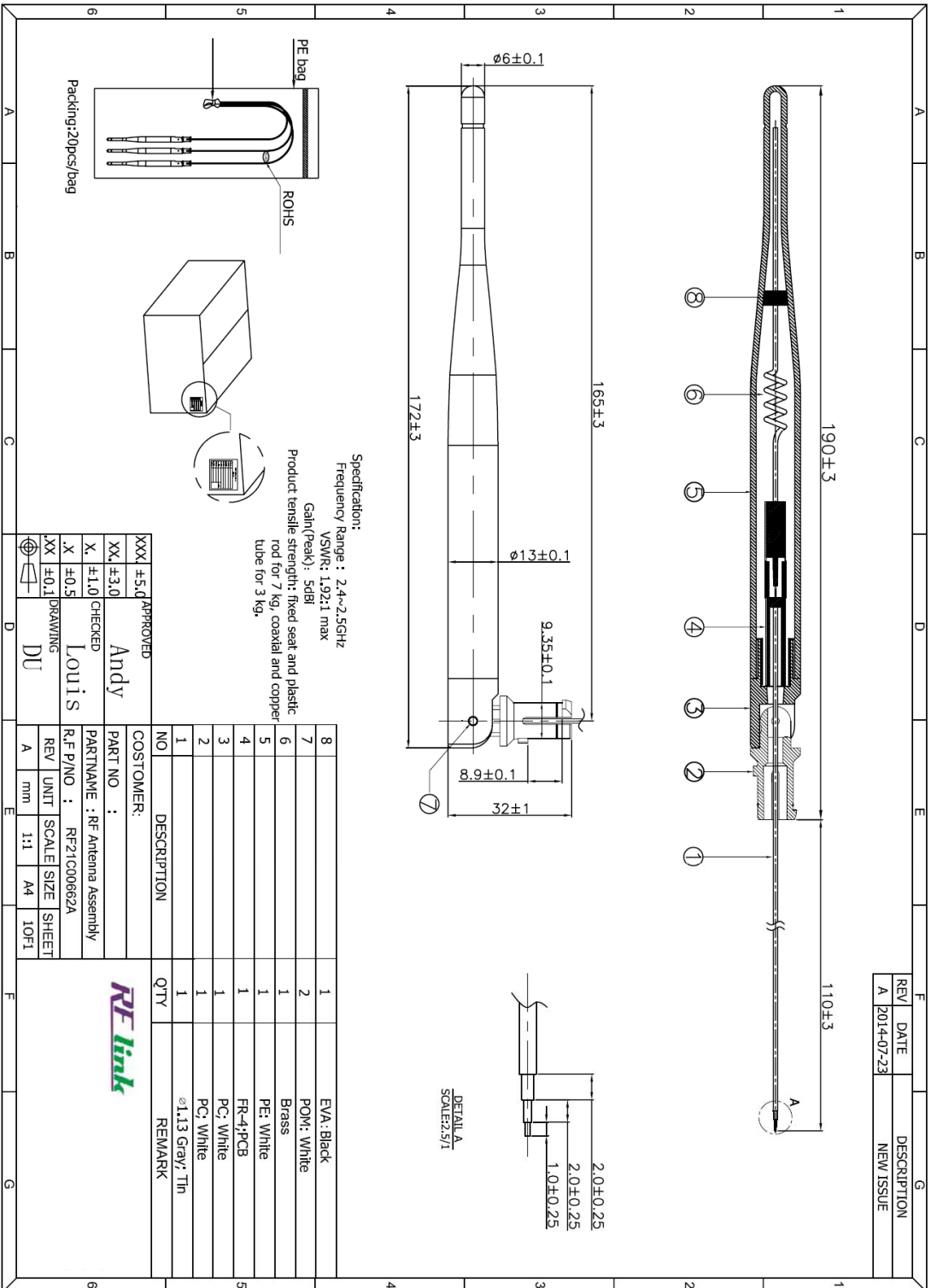


Main technical specifications	
Frequency Range (MHZ)	2400-2500
center frequency Impedance(Ω)	50 \pm 10
Gain(dBi)	5 \pm 0.5
VSWR	\cong 1.92
Admitted Power	1W
Polarization	Linear, Vertical
Radiation	Omni-directional
Connector Type	cable
Physical Properties	
Antenna Base	PE
Operating Temp	-20 $^{\circ}$ C ~+60 $^{\circ}$ C
Storage Temp	-20 $^{\circ}$ C ~+70 $^{\circ}$ C



REV	DATE	DESCRIPTION
A	2014-07-23	NEW ISSUE