



SCHLAGE  
 000A3247 6007409-018  
 FW Ver.: MARK 7.1 10052016  
 Programming Code: 240741  
 User Code A 5539  
 User Code B 3152  
 Model# 2388108

SCHLAGE LOCK COMPANY  
 Model BE489  
 FCC ID: YPSL4G3EE  
 IC: 8668-A03-001

This device complies with Part 15 of the FCC rules and with Industry Canada license-exempt RSS standards.  
 Operation is subject to the following two conditions:  
 (1) This device may not cause harmful interference, and  
 (2) This device must accept any interference received, including interference that may cause unintended operation.



0 9 8 7 6 5 4 3 2 1 0 1 2 3 4 5 6 7 8 9 10 11 12 13

50% MAX. 500% MAX. 880% MAX. 500% MAX. 250% MAX.

29  
30  
31  
32  
33  
34  
35  
36  
37  
38  
39  
40



ENROLL  
UN-ENROLL

ZWAVE+

ALLEGION



ASY-BC

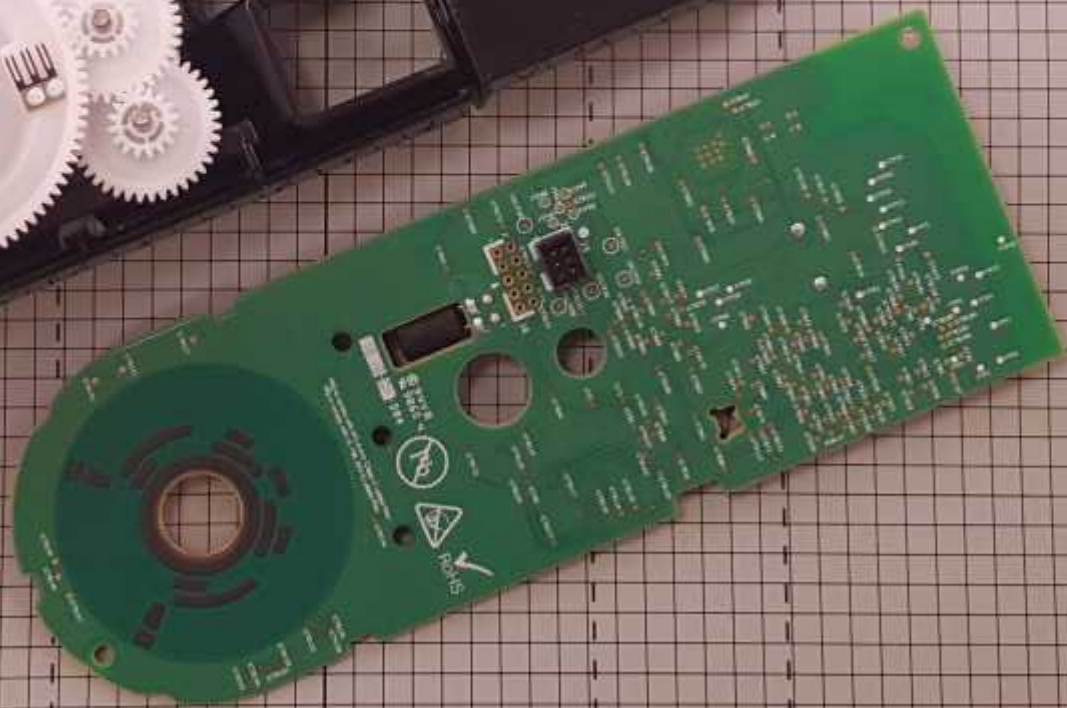
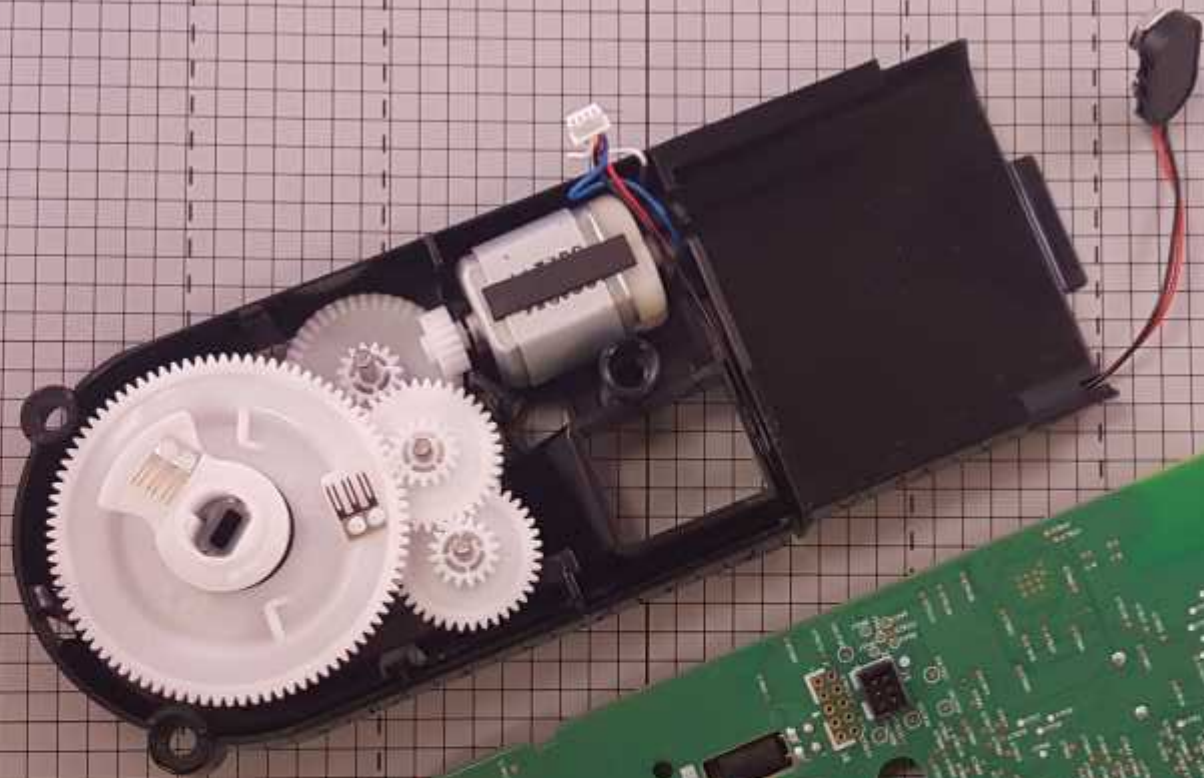
B520-880 - PCB Rev A

LOCK STATE LEFT  
LOCK STATE RIGHT  
UNLOCK STATE LEFT  
UNLOCK STATE RIGHT  
EBC POST  
EBC POST

500% MAX. 500% MAX. 880% MAX. 500% MAX. 250% MAX.

0 9 8 7 6 5 4 3 2 1 0 1 2 3 4 5 6 7 8 9 10 11 12 13

29 30 31 32 33 34 35 36 37 38 39 40



BE469ZP



Wing is covered with IPC-A-610 Class 2 Label Free  
Mfg to comply with UL 1698, RoHS, and other applicable laws.

94V0  
UL 94V0  
004



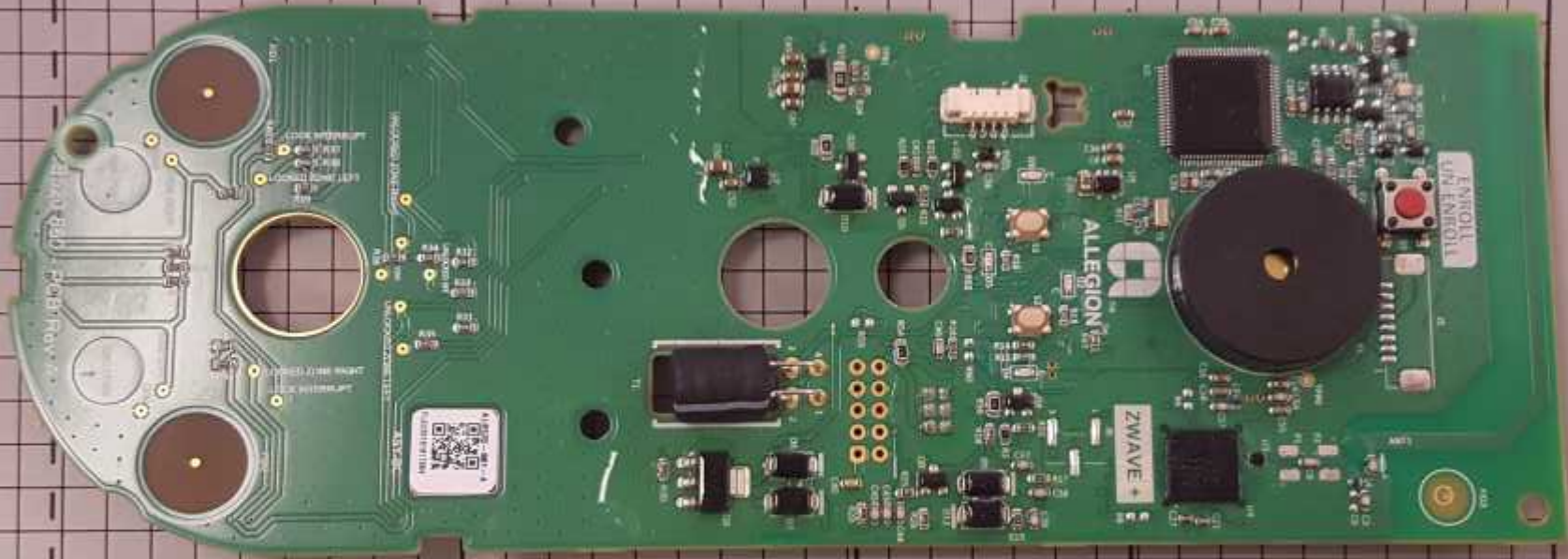
ROHS

MAX. ← 880% MAX. → 500% MAX. → 250% MAX. →

5 4 3 2 1 0 1 2 3 4 5 6 7 8 9 10 11 12 13

31 32 33 34 35 36 37 38 39 40

BE469ZP



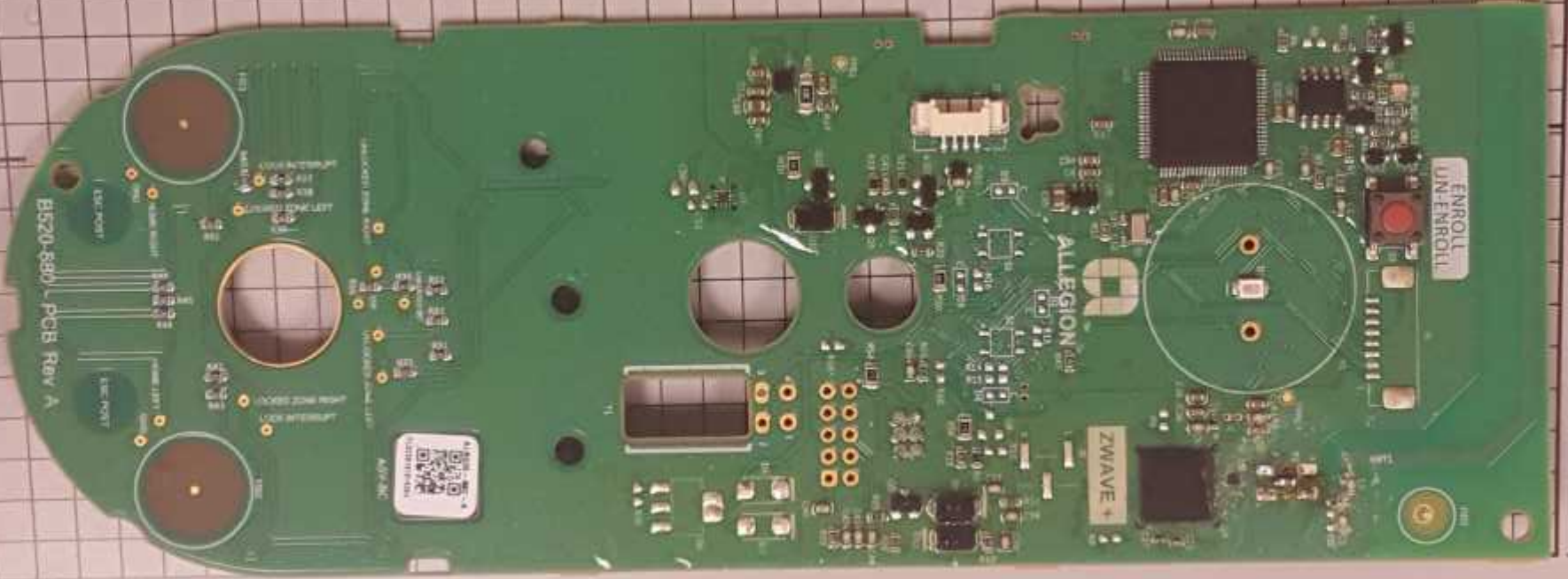
BE468ZP



RoHS  
Pb  
94V-0  
3856  
194-161

250% MAX.  
500% MAX.  
13 12 11 10 9 8 7 6 5

BE468ZP



250% MAX. 500% MAX.







250% MAX.

