

FCC Certification

ITEM 15: Internal Photos



Image 1: Gen2 Bridge (Equipment Under Test) as it appears upon opening of plastic Clamshell. Image includes two halves of outer shell, PCB mounted to one shell half by two mounting screws, battery foam, Plastic light Tube, battery connector, silicone LED covers, silicone positive and negative button covers.

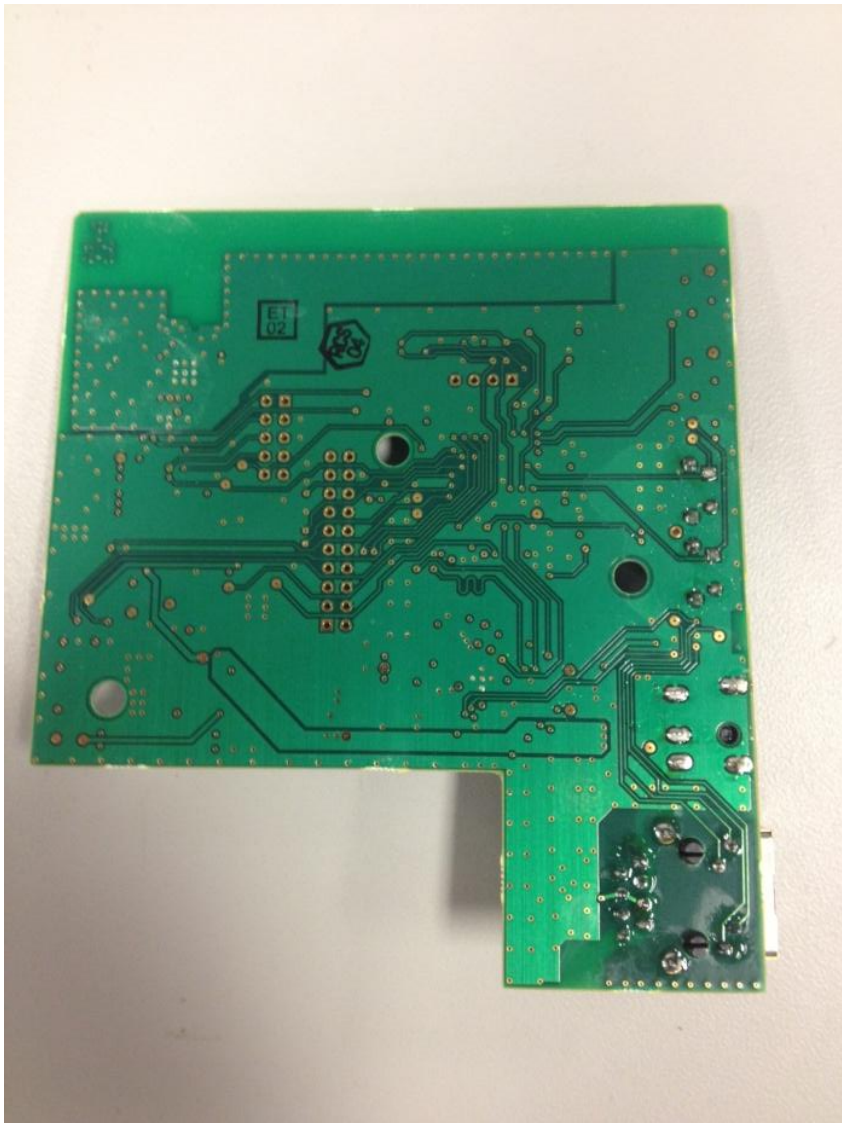


Image 3: PCB removed from clamshell. This is the reversed side.



Images 2: The PCB is completely removed from clamshell. This is the front.