

Label size = 1.50" x 1.00"

Schlage Lock Company

Model # FE789WB

This device complies with Part 15 of the FCC Rules.
 Operation is subject to the following two conditions:
 1) this device may not cause harmful interference, and
 2) this device must accept any interference received,
 including interference that may cause undesired
 operation.

FCC ID: XPB-SMLEVER R-NZ Only
 IC: 8053B-SMLEVER
 

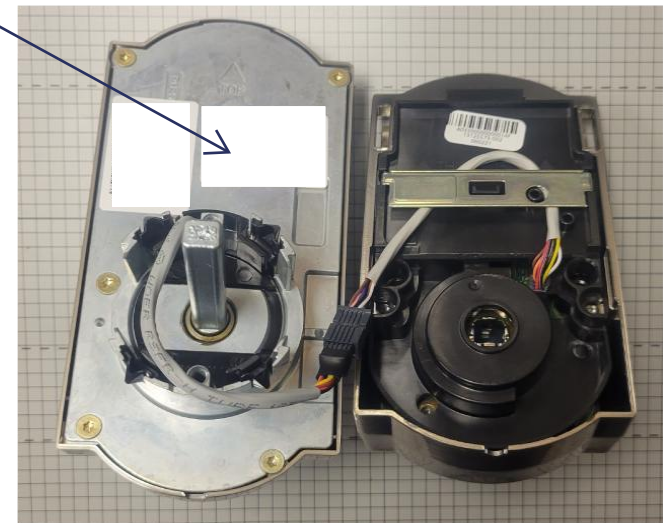
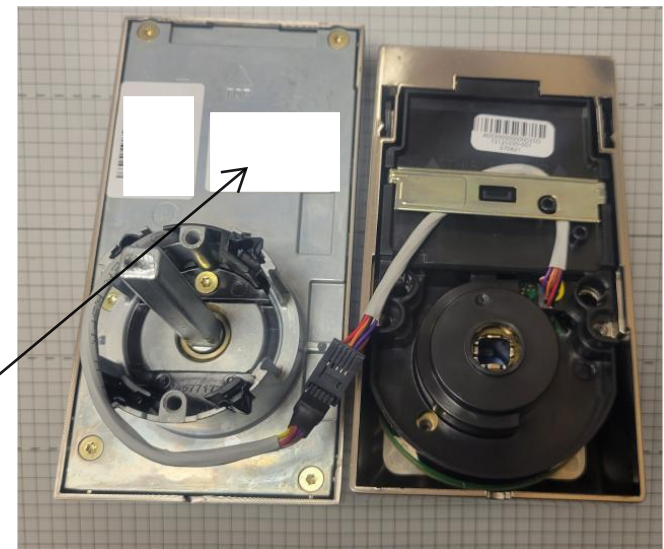
Schlage Lock Company

Model # FE789WBC

This device complies with Part 15 of the FCC Rules.
 Operation is subject to the following two conditions:
 1) this device may not cause harmful interference, and
 2) this device must accept any interference received,
 including interference that may cause undesired
 operation.

FCC ID: XPB-SMLEVER R-NZ Only
 IC: 8053B-SMLEVER
 

LABEL LOCATION



Printing: 1-color ■ Black

Revision History						Revision Description:					
A	B	C	D	E	F	B> Updated FCC ID and IC					
089027	093829	EC #	EC #	EC #	EC #						
Material See part number 23539778						Edited By		Approved By		EC Number	Release Date
Notes 1. Use blank label number 23539778. 2. Characters in red font are variable content that will need to be determined by manufacturing.						Title Label, FE789, Outside					
Creation Date 02-15-21		Number 47378642				Revision B					
Created By D Salvetti		Activity 3899 Hancock Expwy Security, CO 80911		Schlage Lock Company Copyright © 2022							
Software: Illustrator CC											