







250% MAX. 500% MAX.



ALLEGION

TOPAZ
MULTITECH



AL72665-B
KAF7265182400100

ALLEGION
47265605

REV A

A PLSS-1.9W-0

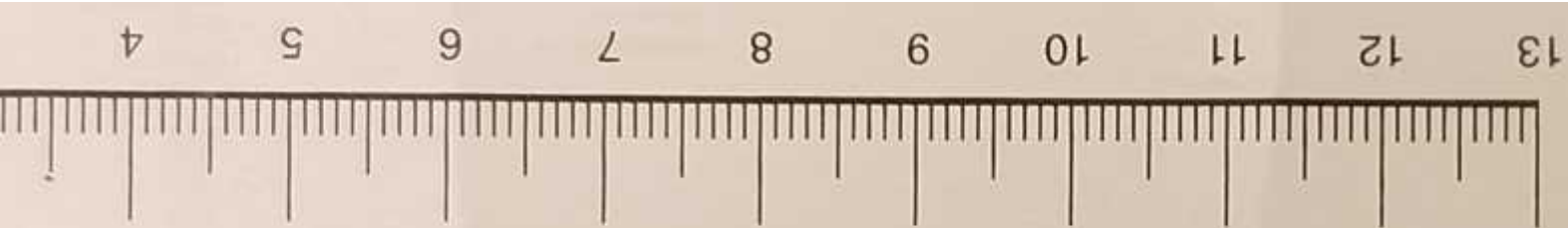
1931A10-1



ET

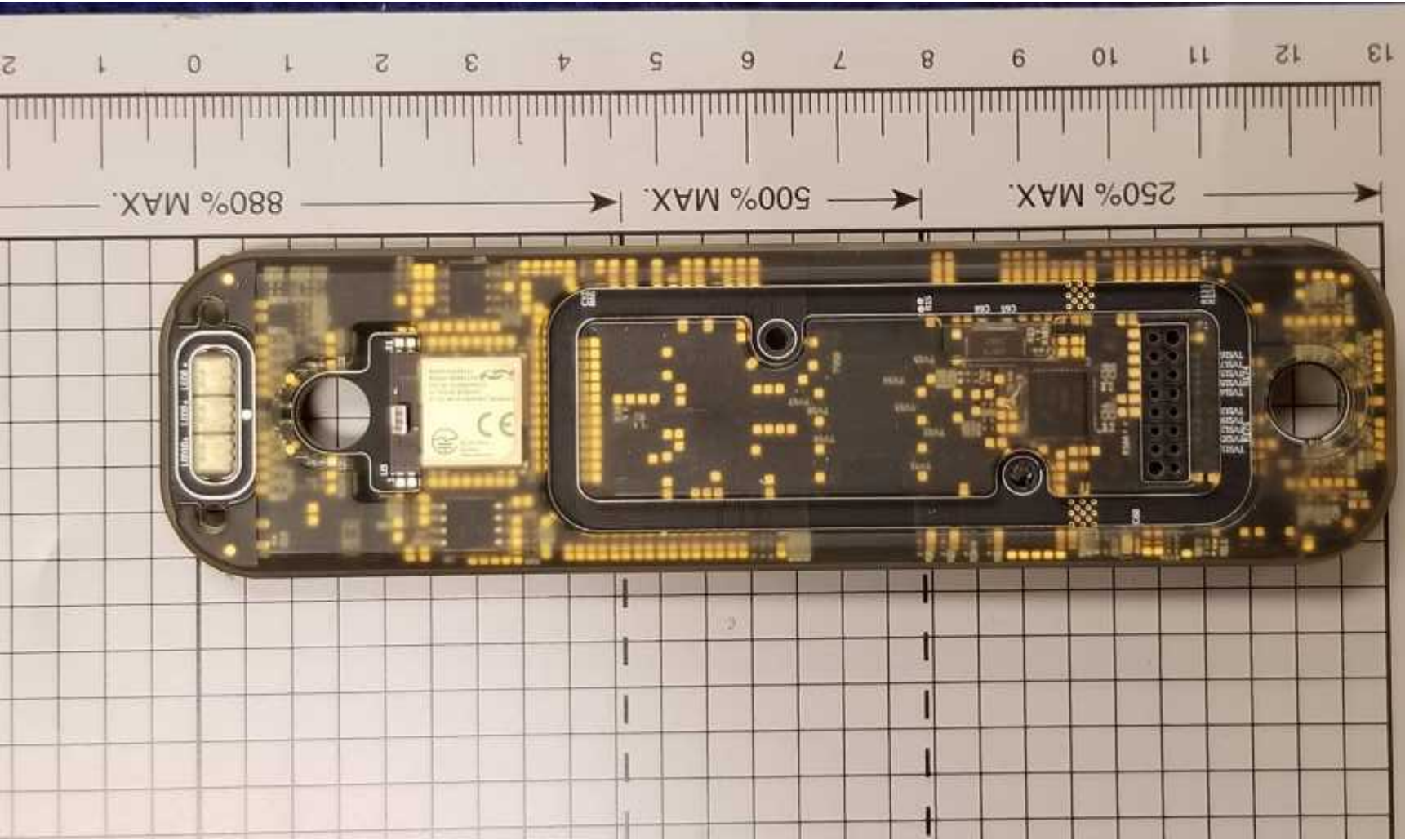
82103210





250% MAX. 500% MAX.



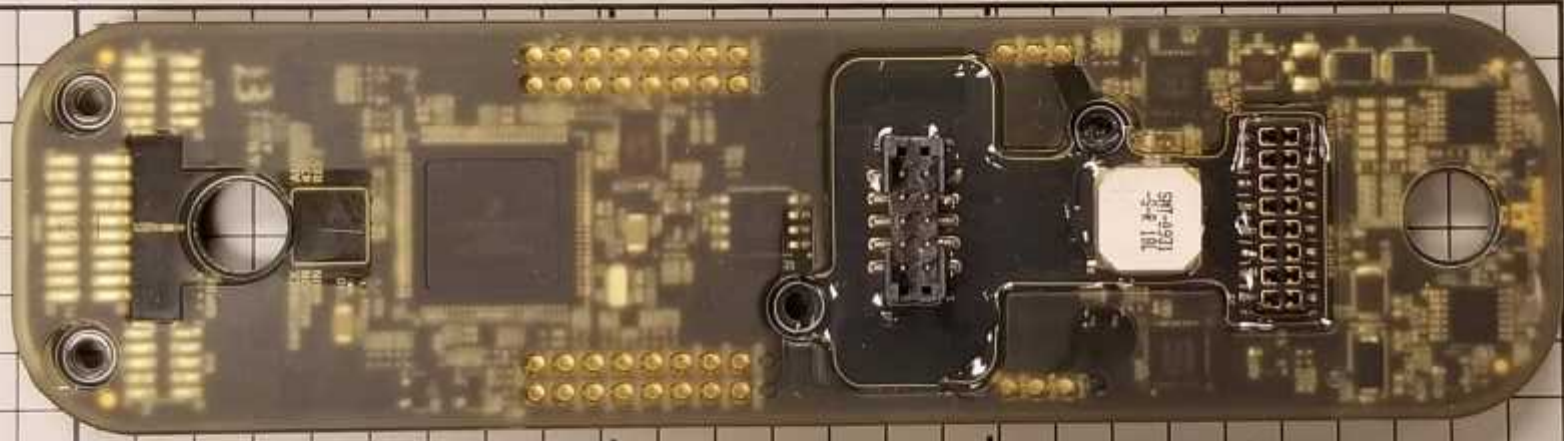
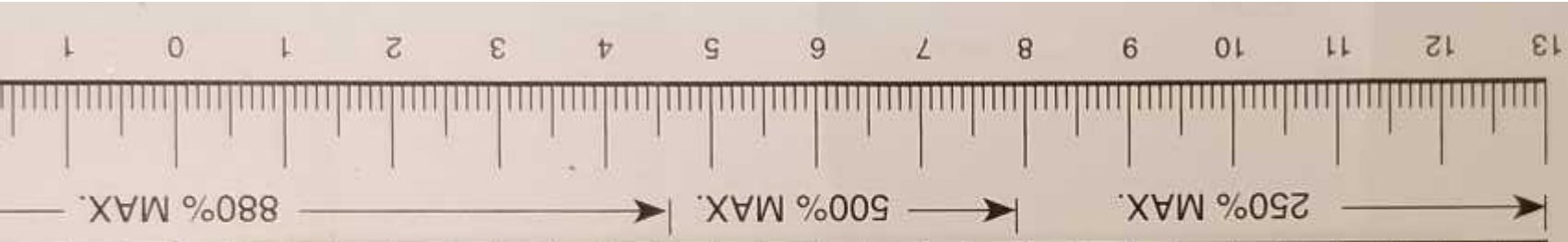


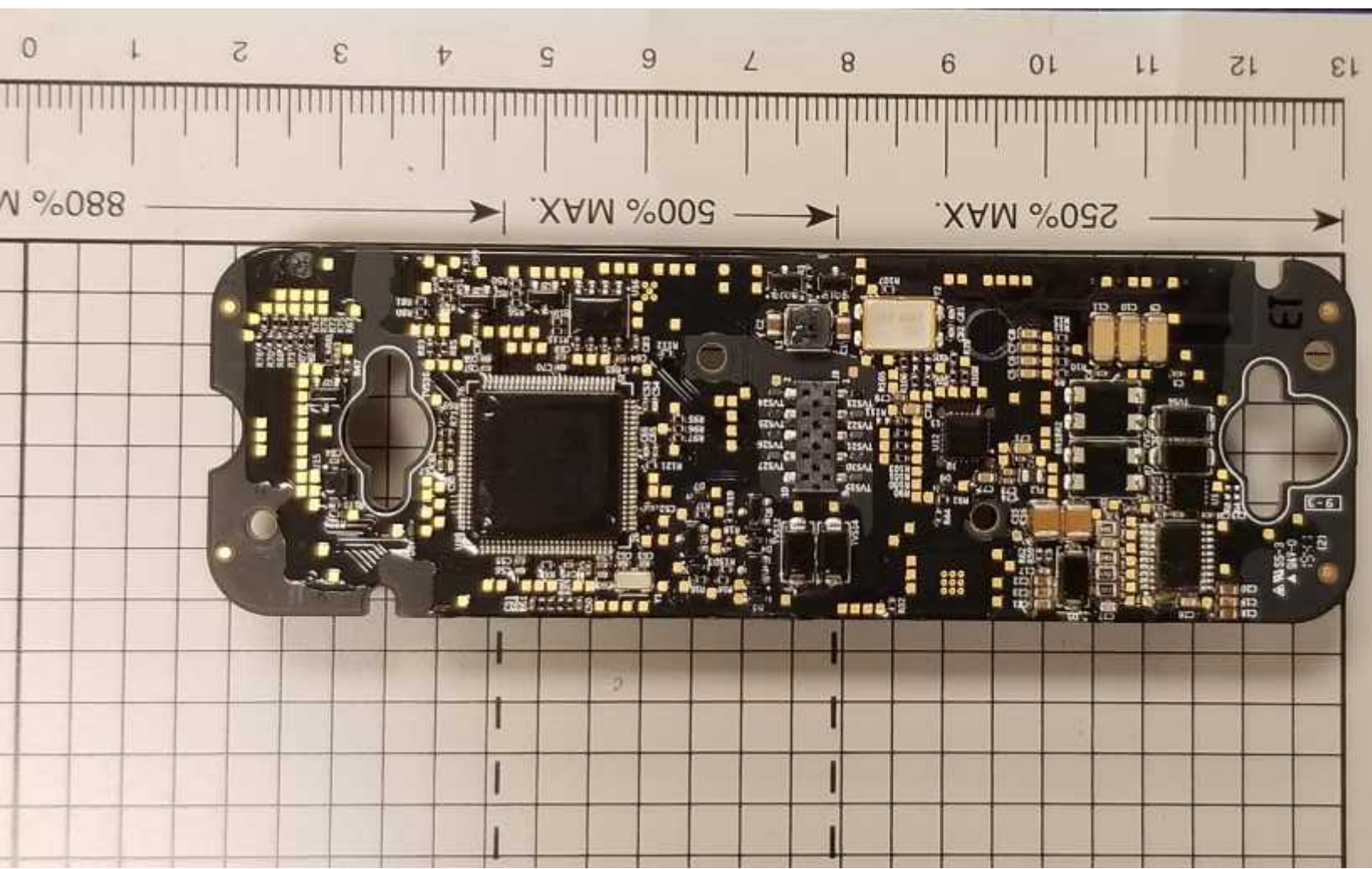
40
39
38
37
36
35
34

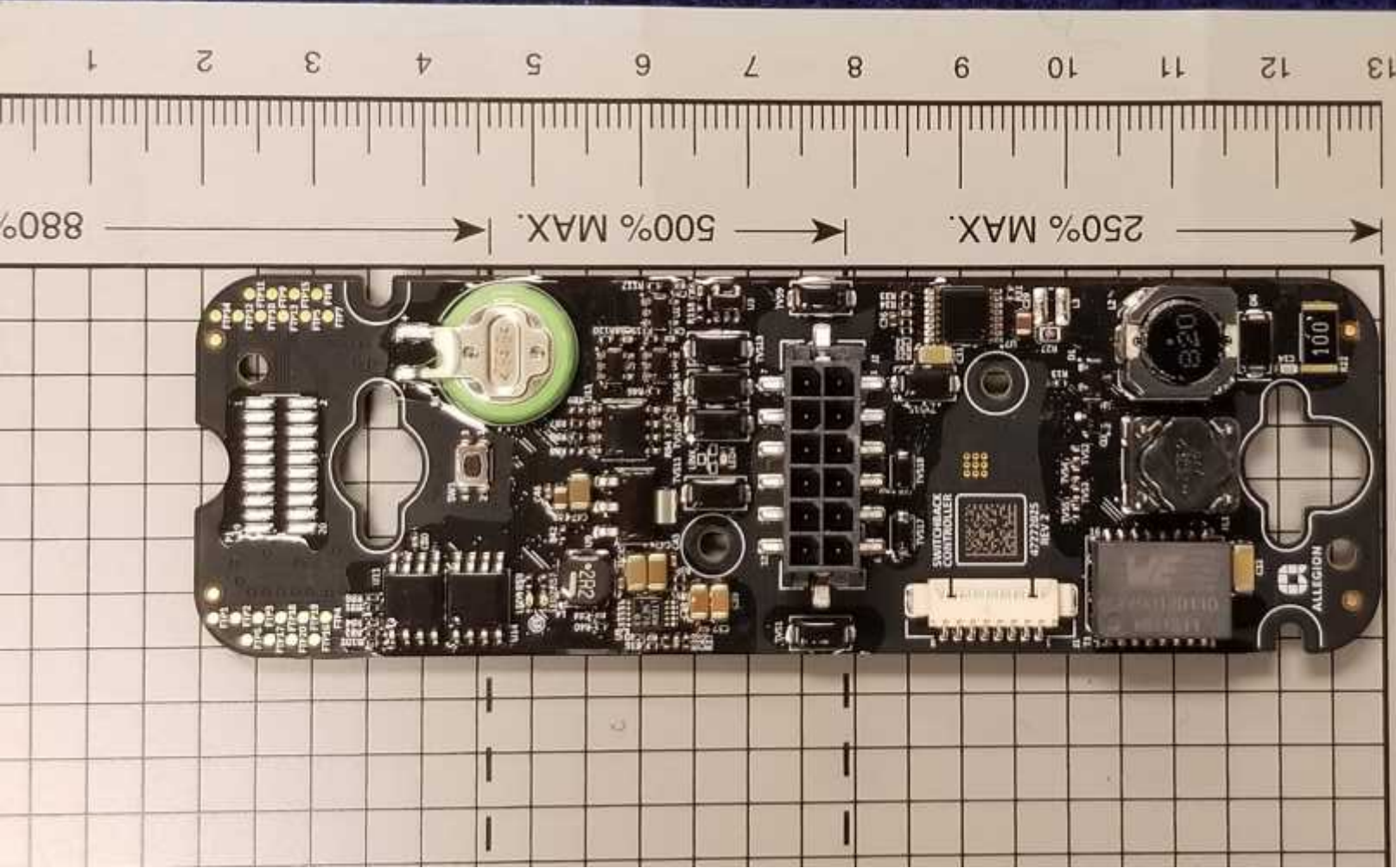
250% MAX.

500% MAX.

880% MAX.







13 12 11 10 9 8 7 6 5 4 3 2 1

250% MAX.

500% MAX.

880%

40 39 38 37 36 35

PCB components and markings:

- Green battery (top left)
- White connector (center)
- IC: SWITCHBACK CONTROLLER, REV 2, 42222025
- IC: 2R2
- IC: 100
- IC: 820
- Allegion logo (bottom right)
- Pin headers: PTH4, PTH5, PTH6, PTH7, PTH8, PTH9, PTH10, PTH11, PTH12, PTH13, PTH14, PTH15, PTH16, PTH17, PTH18, PTH19, PTH20, PTH21, PTH22, PTH23, PTH24, PTH25, PTH26, PTH27, PTH28, PTH29, PTH30, PTH31, PTH32, PTH33, PTH34, PTH35, PTH36, PTH37, PTH38, PTH39, PTH40, PTH41, PTH42, PTH43, PTH44, PTH45, PTH46, PTH47, PTH48, PTH49, PTH50, PTH51, PTH52, PTH53, PTH54, PTH55, PTH56, PTH57, PTH58, PTH59, PTH60, PTH61, PTH62, PTH63, PTH64, PTH65, PTH66, PTH67, PTH68, PTH69, PTH70, PTH71, PTH72, PTH73, PTH74, PTH75, PTH76, PTH77, PTH78, PTH79, PTH80, PTH81, PTH82, PTH83, PTH84, PTH85, PTH86, PTH87, PTH88, PTH89, PTH90, PTH91, PTH92, PTH93, PTH94, PTH95, PTH96, PTH97, PTH98, PTH99, PTH100